

How to Log into the CONNX Rest Server

The CONNX REST Server is a new interface which opens all the functionality of CONNX to be utilized via a web interface.

When CONNX 14.5 and higher is installed in an environment, the opportunity to install the REST Server on one or many machines is available.

To login to a CONNX REST Server from any machine using a web browser, please do the following:

1. Open a web browser and enter the following into the address bar:
https:\\<machine name or IP address of the REST SERVER>:9500/login
example – https:\\connxserver:9500/login
 - a. Please note – firewalls may need to be opened to allow for access to and from this system. Discuss with the local network administrator.
 - b. Once this page populates you will see a login screen like this:

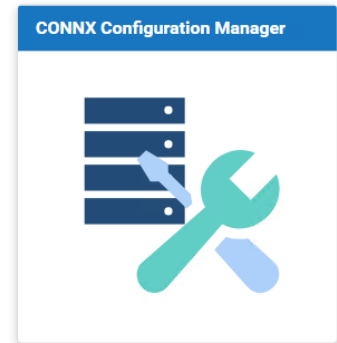
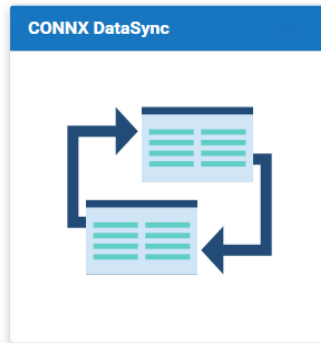
CONNX
CONNX REST Server 14.7 (build 22238)
Client Version 14.7.22238

Username
DOMAIN\

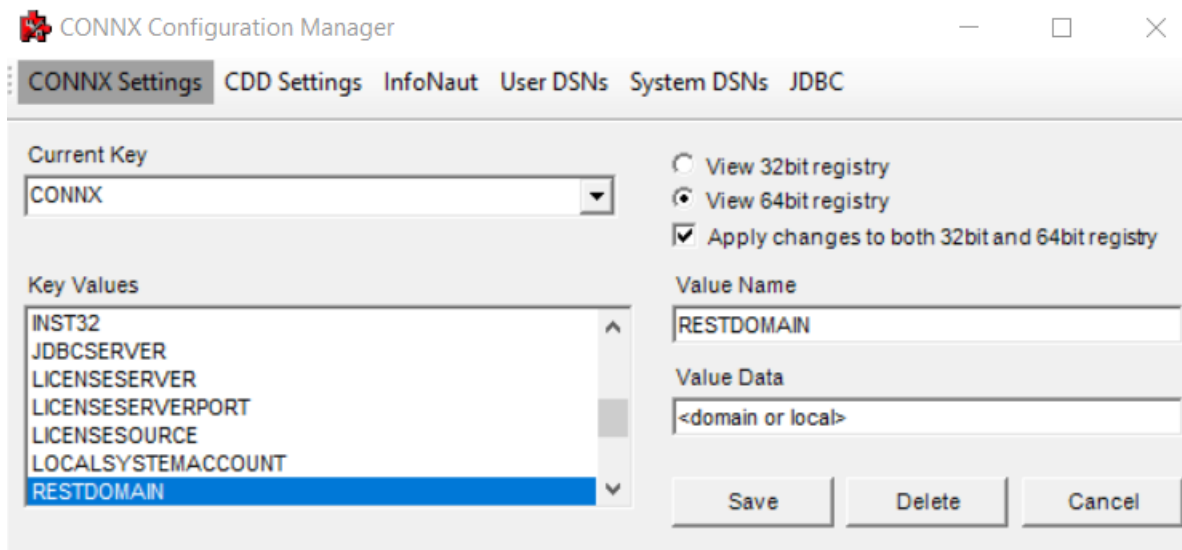
Password

Log in

- c. The very first time and account used to login onto the REST Server will be defined as the administrative account. This can be modified later. This will be covered more in detail in the “How to setup users in the REST Server” quick reference guide.
 - d. Enter the domain account and password for the environment that this system is in. This will validate against the domain and will then log in the user to the REST Server. If properly validated the user will see a screen with the application options defined by his user account, something like this:



2. If there is no domain to validate against, or if it is a cloud-based domain, a configuration setting should be used to properly allow access to the system. In this case, please set the below CONNX Configuration Manager Setting on the machine running the REST Server service:



3. This setting will allow you to point to a specific domain or to validate against the local user accounts on the machine running the REST Server service. To validate against the local user accounts the Value Data would be "LOCAL". To validate against a specific domain account, the Value Data would be that specific domain.
4. If this change is made using the CONNX Configuration Manager (classic) application, then the CONNX REST service will need to be restarted. If this change is made through the new Web interface for the CONNX Configuration Manager (14.7 and newer), then the CONNX Rest service will not need to be restarted.