



# ARIS

# MIGRATING WEB SERVICES

Version 9.8 - Service Release 4

April 2016

This document applies to ARIS Version 9.8 and to all subsequent releases. Specifications contained herein are subject to change and these changes will be reported in subsequent release notes or new editions.

Copyright © 2010 - 2016 [Software AG](#), Darmstadt, Germany and/or Software AG USA Inc., Reston, VA, USA, and/or its subsidiaries and/or its affiliates and/or their licensors.

The name [Software AG](#) and all Software AG product names are either trademarks or registered trademarks of [Software AG](#) and/or Software AG USA Inc. and/or its subsidiaries and/or its affiliates and/or their licensors. Other company and product names mentioned herein may be trademarks of their respective owners. Detailed information on trademarks and patents owned by Software AG and/or its subsidiaries is located at <http://softwareag.com/licenses>.

Use of this software is subject to adherence to Software AG's licensing conditions and terms. These terms are part of the product documentation, located at <http://softwareag.com/licenses> and/or in the root installation directory of the licensed product(s).

This software may include portions of third-party products. For third-party copyright notices, license terms, additional rights or restrictions, please refer to "License Texts, Copyright Notices and Disclaimers of Third Party Products". For certain specific third-party license restrictions, please refer to section E of the Legal Notices available under "License Terms and Conditions for Use of Software AG Products / Copyright and Trademark Notices of Software AG Products". These documents are part of the product documentation, located at <http://softwareag.com/licenses> and/or in the root installation directory of the licensed product(s).

## Inhalt

1	Migrate web services from ARIS version 7.2 to ARIS version 9.x .....	1
2	Exporting web service out of ARIS 7.2 .....	2
2.1	Exporting web services out of ARIS.....	2
2.2	Exporting an XML schema out of ARIS.....	3
3	Importing services into CentraSite .....	4
3.1	Importing a web service to CentraSite.....	4
3.2	Importing an XML schema to CentraSite.....	7
4	Configuring a CentraSite connection for ARIS .....	9
5	Configuring webMethods integration .....	11
6	Importing web services from CentraSite to ARIS 9.x.....	12
6.1	Importing services from CentraSite.....	12
6.2	Restoring or removing synchronization with CentraSite .....	14

## **1 Migrate web services from ARIS version 7.2 to ARIS version 9.x**

Web services used in ARIS version 7.2 can be migrated for further usage in ARIS 9.x.

Web services serve as a universal system for communication between applications and services. By specifying the interactions and sequence of Web services, integrated, service-oriented systems that can reflect and process business management requirements on the basis of company processes are created from the basic modules of Web services.

Both ARIS 7.2 and an ARIS 9.x must be installed.

A CentraSite server must be installed because CentraSite is used as a repository for the web services.

You first have to export the services from ARIS version 7.2 (page 2), then, you have to import the web services into CentraSite (page 4).

After that, you have to import (page 12) the services to ARIS version 9.x.

## 2 Exporting web service out of ARIS 7.2

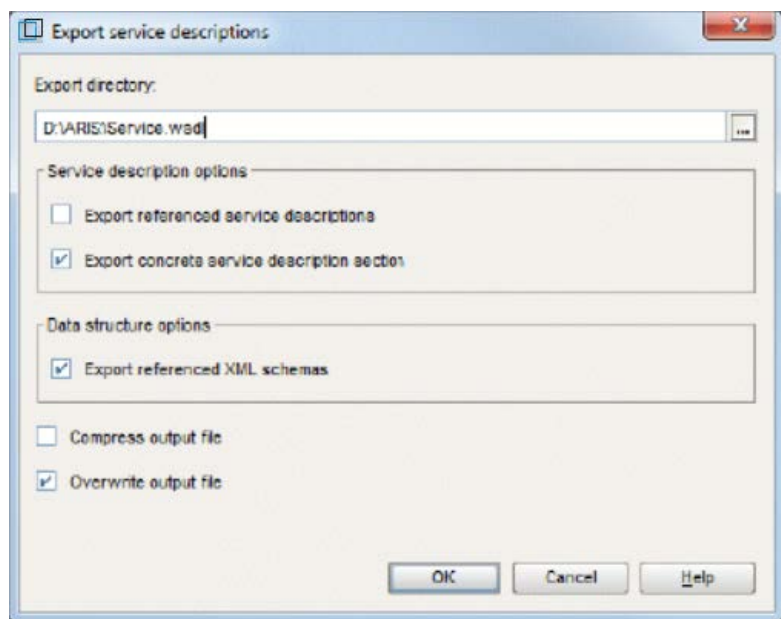
Export the web services from ARIS 7.2 and save them as WSDL files.

### 2.1 Exporting web services out of ARIS

Export software services as an XML-based WSDL file.

#### Procedure

1. Select a software service, a model that contains the software service, or a group in which the software service you want to export is saved.
2. Select **Export > Service description**.
3. The dialog for exporting the service opens. Define the relevant settings and click OK.



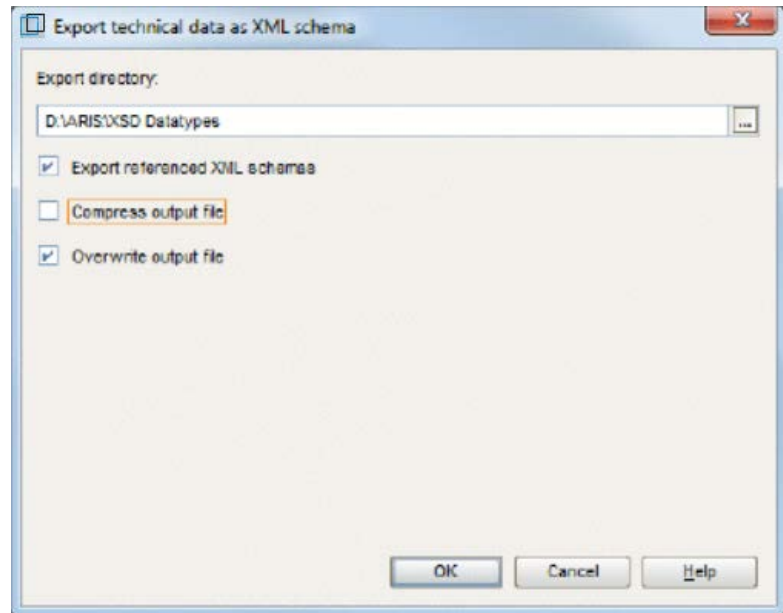
The web service is exported to a WSDL file. Any related data - e.g. XML schemas - is also exported.

## 2.2 Exporting an XML schema out of ARIS

Export an XML schema definition as an XML-based file.

### Procedure

1. Select an XML schema definition or the group that contains the XML schema definition you want to export.
2. Select **File > Export > Data structures**. The dialog for exporting an XML schema opens. Define the relevant settings and click **OK**.



The XML schema is exported to an XSD file.

### 3 Importing services into CentraSite


Import the WSDL file based services to your CentraSite server.

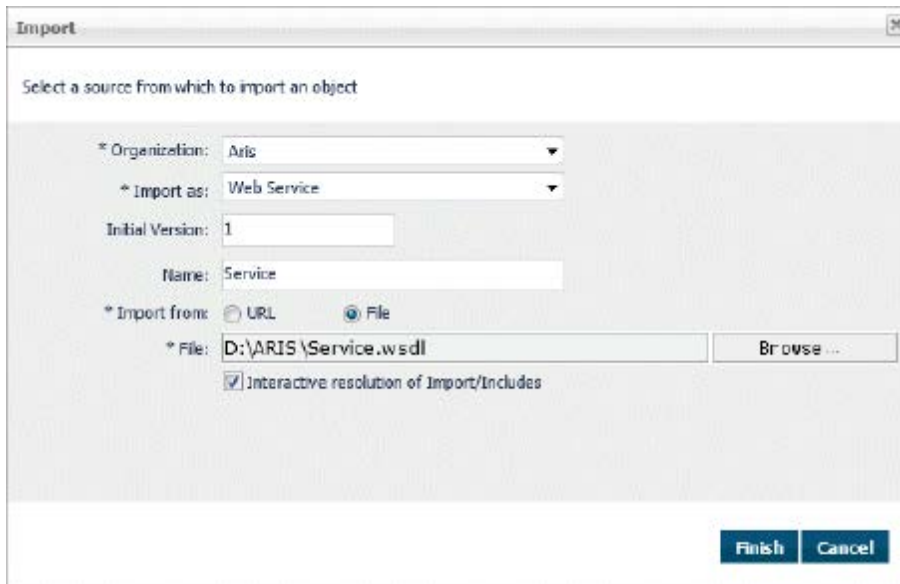
#### 3.1 Importing a web service to CentraSite

You can import one or more web services from a web server or a file system to a CentraSite registry and repository. For the import, you must specify a WSDL file that may define one or more web services.

You can update web services in CentraSite by importing an updated WSDL file. The WSDL file must have the same namespace, service names, and organization as the original WSDL file. It may also include additional web services. However, it is not possible to remove a service from CentraSite via an updated WSDL file that no longer includes the corresponding service element. Please note that the import will fail if you specify a WSDL file containing a namespace and services that already exist in CentraSite but are affiliated to a different organization.

##### Procedure

1. Start CentraSite.
2. Switch to the **Asset Catalog**.
3. Click  **Import**. The **Import** dialog opens.



Import

Select a source from which to import an object

\* Organization: Aris

\* Import as: Web Service

Initial Version: 1

Name: Service

\* Import from:  URL  File

\* File: D:\ARIS\Service.wsdl

Interactive resolution of Import/Includes

4. Select **Web service**.

5. Specify the following parameters:
  - a. Select the organization to which the web services are to be assigned.
  - b. Specify a version identifier for the new service. The version identifier you enter here is the service's public, user-assigned version identifier. You can enter any string in the Initial version field, i.e. the version identifier does not need to be numeric. You can also leave this field blank.
  - c. Choose the **Import from file system** option and specify the path and name of the WSDL file in the File field. Use the Browse button to select the file in the file system of your computer.
  - d. Enable **Interactive resolution of Import/Includes** to determine how referenced schemas are handled when the schema that is referenced already exists in the registry. If this option is enabled, you are prompted during import to specify whether you want to reuse any schema files referenced in the main file or upload new files.
6. Click **OK**.

In case you imported a new web service, CentraSite retrieves the specified file and creates the web service. If you have specified Interactive resolution of Import/Includes, you will be prompted to specify whether you wish to reuse any of the WSDL/schema files referenced in the main WSDL file or upload new files.

If the importer detects that the service you are trying to import already exists within CentraSite, the import dialog will prompt you to specify whether you want to **Overwrite latest version** or **Create new version**. If you have specified **Interactive resolution of Import/Includes**, you will be prompted to specify whether you wish to reuse any of the WSDL/schema files referenced in the main WSDL file via **Import** or **Include** statements or upload new files.

The following registry objects and folders and files are created by the import of web services:

- In the registry, objects are created for different elements defined in the WSDL file being imported: An object of the service type is created for each **Service** element defined in the WSDL file. The corresponding name attribute in the WSDL file determines the registry object's name. The **Service** objects are assigned to the organization which you specify in the import parameters. A corresponding **Organization** object is created, if required.

Depending on the WSDL file, additional objects of the following types may be created:

**ServiceBinding** objects for service bindings, **SpecificationLink** objects for specification links, **Concept** objects for bindings, **Operation** objects for operations, **Interface** objects for interfaces, **BPELPartnerLinkType** objects for partnerLinkType elements in the WSDL file, **BPELRole** objects for role elements within partnerLinkType elements. The new objects are connected by associations and implicit references as required.

- For each imported web service, an external link is created, which points to the WSDL file in the repository.



- The WSDL file is copied to a subfolder of **projects/WSDL** in the repository.

The name of the subfolder is determined by the namespace defined in the **targetNamespace** attribute of the WSDL's definition element. For example, if the namespace is **http://www.MyOrganization.com/products**, the WSDL file is copied to **projects/WSDL/www.MyOrganization.com/products**.

The name of the WSDL file in the repository is built as follows:

**organization\_service\_file.wsdl**, where organization is the organization name you specify in the import parameters, service is the name of the service as specified in the WSDL, and file is the file name or final part of the URL specified in the import parameters. For example, when you import a web service from **C:\services\MyService.wsdl**, the service name in the WSDL file is **queryService**, and the specified organization is **MyOrg**, the resulting file name in the repository is **MyOrg\_queryService\_MyService.wsdl**.

- If the WSDL file contains references to schema files, these are also imported, including all of the schema files that are referenced. The folders and files and registry objects that are created correspond to importing an XML schema.
- If the importer detects an equivalent service within CentraSite during the import of a web service, the import dialog will prompt you to specify either **Overwrite latest version** or **Create new version**. If you decide to create a new version, the importing WSDL will be applied to the new version.


You can also choose the option **Interactive resolution of Import/Includes**, which will allow you to specify how an already existing imported/included file (further WSDL or schema) is handled. For each of the imported/included files you have one of the following options:

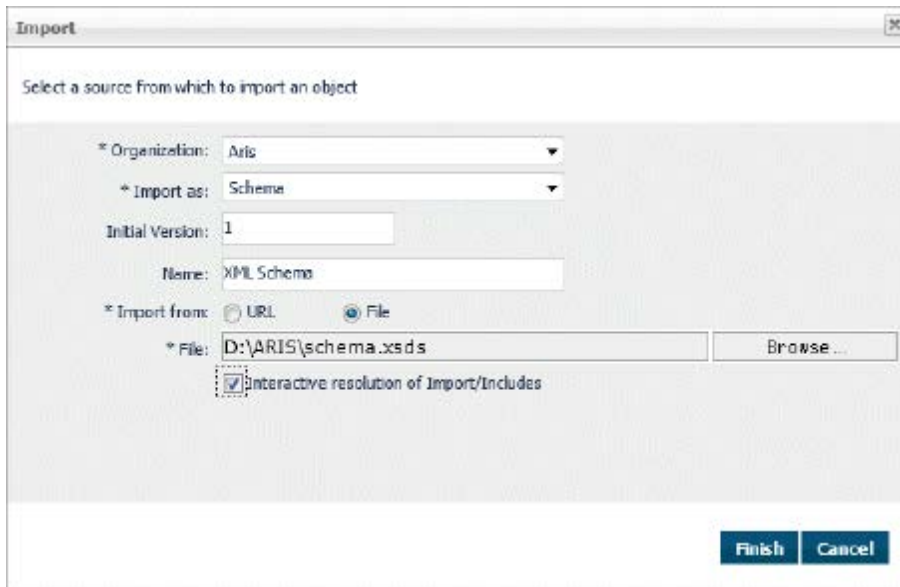
- Overwrite the importing file (WSDL or schema) with new content.
- Create a new version of the file with the new content (if, for example, you want to modify a schema but want to retain its previous version).
- Reuse any version of the file (if, for example, an intermediate version of a schema is currently referenced by a WSDL, you can redirect it to the newest version).

## 3.2 Importing an XML schema to CentraSite

You can import an XML schema from a Web server or a file system to a CentraSite registry and repository.

### Procedure

1. Start CentraSite.
2. Switch to the **Asset Catalog**.
3. Click  **Import**. The Import dialog opens.



The screenshot shows the 'Import' dialog box with the following configuration:

- Organization: Aris
- Import as: Schema
- Initial Version: 1
- Name: XML Schema
- Import from: File (selected)
- File: D:\ARIS\schema.xsds
- Interactive resolution of Import/Includes:

4. Select **Schema**.
5. Specify the following parameters:
  - a. Select the organization to which the XML schema is to be assigned.
  - b. Specify a version identifier for the new service. The version identifier you enter here is the service's public, user-assigned version identifier. You can enter any string in the **Initial version field**, i.e. the version identifier does not need to be numeric. You can also leave this field blank.
  - c. Choose the **Import from file system** option and specify the schema's path and name in the **File** field. Use the **Browse** button to select the file in the file system of your computer.
  - d. If you have specified a URL, and the site you want to access via the URL requires user authentication, enable the **URL Authentication** check box. This opens a sub-dialog in which you can enter a user name and password for authentication at the URL site.
  - e. Enable **Interactive resolution of Import/Includes** to determine how referenced schemas are handled when the schema that is referenced already exists in the registry. If this option is enabled, you are prompted during import to specify whether you want to reuse any schema files referenced in the main file or upload new files.
6. Click **OK**.

CentraSite retrieves the specified file and creates the XML schema. If you have specified **Interactive resolution of Import/Includes**, you will also be prompted to specify whether you wish to reuse any of the schema files that might be referenced in the main schema file via **Import** or **Include** statements or upload new files.

If the importer detects that the schema you are trying to import already exists within CentraSite, the import dialog will prompt you to specify whether you want to **Overwrite latest version** or **Create new version**. If you have specified **Interactive resolution of Import/Includes**, you will also be prompted to specify whether you wish to reuse any of the schema files that might be referenced in the main schema file via **Import** or **Include** statements or upload new files.

The following folders and files and registry objects are created by the import of an XML schema:

- The schema file is copied to a subfolder of **projects/WSDL** in the repository. The name of the subfolder is determined by the namespace defined in the schema. For example, if the namespace is **http://www.MyOrganization.com/MySchemas/schema1**, the schema is copied to **projects/WSDL/www.MyOrganization.com/MySchemas/schema1**.
- If the schema file contains references to other schema files, these are also imported, including all the schema files that are referenced.
- For each imported schema file, a registry object of the XML Schema type is created. An external link is created for the object that points to the schema file in the repository.



When you delete an external link in the registry that points to a schema file in the repository, the schema file in the repository is also deleted. However, any schema entries in the registry and repository that are referenced by the schema being deleted remain untouched.

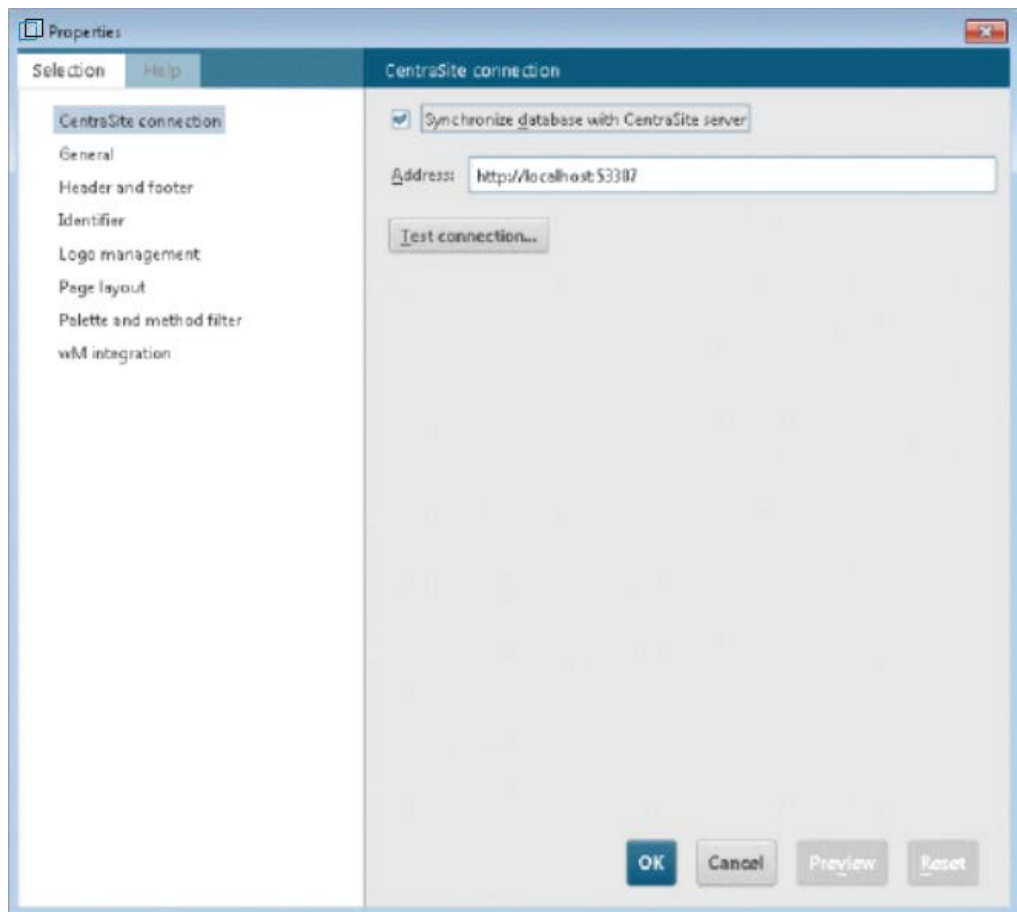
- If the importer detects an equivalent schema file within CentraSite during the import of a schema, the import dialog will prompt you to specify either **Overwrite latest version** or **Create new version**. If you decide to create a new version, the importing schema will be applied to the new version.
- You can also choose the option **Interactive resolution of Import/Includes**, which will allow you to specify how an already existing imported/included file is handled. For each of the imported/included files you have one of the following options:
  - Overwrite the importing file with new content.
  - Create a new version of the file with the new content (if, for example, you want to modify a schema but want to retain its previous version).
  - Reuse any version of the file (if, for example, an intermediate version of a schema is currently referenced by a WSDL, you can redirect it to the newest version).

## 4 Configuring a CentraSite connection for ARIS

When using a CentraSite server to use services within your processes you must configure the connection to CentraSite. This ensures that all of the components of the ARIS-webMethods integration can communicate with each other.

### Procedure

1. Click **ARIS** >  **Administration**.
2. Log into the database with the administrator login you want to configure for CentraSite.
3. Click onto the relevant database and then click  **Properties** > **CentraSite connection**.



4. Activate the **Synchronize database with CentraSite server** option and enter the complete URL with the port to the CentraSite server

### Example

http://my\_CentraSite-Server:53307

5. Click **OK**.

You have configured the connection to a CentraSite server for this database. Now, you can test the connection.

Users who work in the same ARIS database but belong to different CentraSite organizations usually cannot see the assets of the other organizations. In Addition, the application server assets that represent the ARIS database are also affected. We recommend that all users of an ARIS database are created in only one CentraSite organization to avoid this problem.

Alternatively you can create these users in one single group within CentraSite and assign the relevant read and write permissions to this group.

## 5 Configuring webMethods integration

You can now use services from the CentraSite repository. You can now use services from the CentraSite repository.

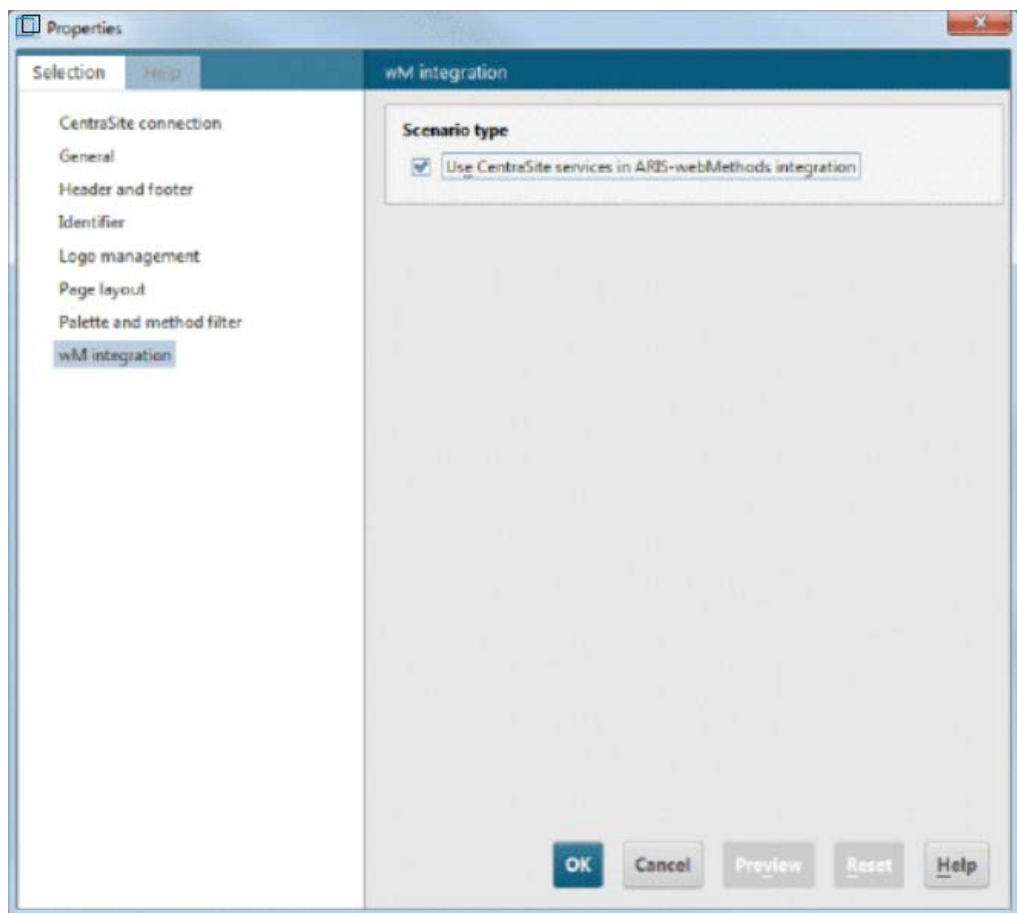
When using a CentraSite server to use services within your processes you must configure the connection to CentraSite. This ensures that all of the components of the ARIS-webMethods integration can communicate with each other.

### Precondition

You don't have a process shared with the IT.

### Procedure

1. Click **ARIS** >  **Administration**.
2. Select a database and click  **Properties**. The **Properties** dialog opens.
3. Click **wM Integration**.



4. Activate the **Use CentraSite services in ARIS-webMethods integration** option and click **OK**.

You can now use services from the CentraSite repository.

## 6 Importing web services from CentraSite to ARIS 9.x

Import the web services from CentraSite into ARIS 9.x.

### 6.1 Importing services from CentraSite

Import all of the services from CentraSite that may be required in the database you are modeling in. You can use % or \* as a placeholder for one or more characters (not in the ID field). For example, if you enter ABC%DEF or ABC\*DEF you receive all strings that start with ABC, end with DEF and have any number of any type of characters in between. The % or \* placeholder is automatically assumed at the end of a string.

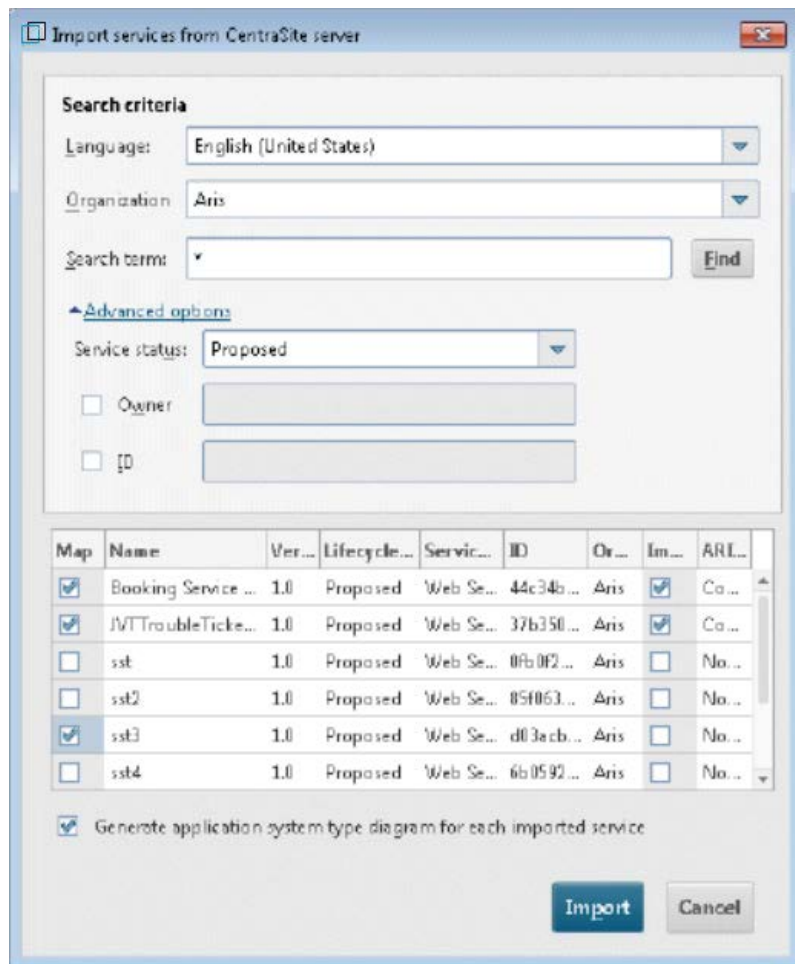
You can restrict the search to the service status and the person responsible.

#### Procedure

1. Log in to the relevant database.
2. Right-click the relevant group, and click **ARIS > Explorer**.
3. Activate the Services tab bar.
4. Select the relevant group and click **Import service from CentraSite**.
5. Log on to the CentraSite server and select the relevant services. If you wish to use the service in a process that is to be implemented, please make sure that the service is not an abstract service. The dialog for finding services in CentraSite opens.

6. Define the relevant settings and click **Find**.

The services that match the criteria entered are displayed.



7. Check the services you want to import. Services that were already imported are automatically checked.

8. Click **Import**.

If the WSDL file of a service that has bindings is imported and the WSDL file of a second service that also has bindings is used, the second service cannot be imported, because due to the use of the second service in the first, the binding was already imported. Each binding can only be imported once.




## 6.2 Restoring or removing synchronization with CentraSite

If you merged services that were synchronized with CentraSite into another database or imported a synchronized service via XML import, you must synchronize the database content manually with CentraSite.

You can remove the synchronization. This makes sense if the service to be synchronized is not located in CentraSite. In this case you can remove the synchronization and start a service request for this service.

### Procedure

1. Use an administrator login to log into the database for which you want to manually establish or remove synchronization.
2. Click **ARIS >  Administration**.
3. Click **Worklist for CentraSite integration** in the **Navigation** pane.
4. Select one or more Software service types and click Resynchronize with CentraSite to restore the synchronization with CentraSite. Click **Remove synchronization relationship with CentraSite** to remove the synchronization.

You have restored or removed the synchronization with CentraSite. Please note that must reimport (page 12) services after removing the synchronization.

Users who work in the same ARIS database but belong to different CentraSite organizations usually cannot see the assets of the other organizations. In Addition, the application server assets that represent the ARIS database are also affected. We recommend that all users of an ARIS database are created in only one CentraSite organization to avoid this problem.

Alternatively you can create these users in one single group within CentraSite and assign the relevant read and write permissions to this group.