



ARIS Risk & Compliance Manager

CONTROL-BASED TEST AND SIGN-OFF MANAGEMENT CONVENTIONS

Version 10.0 - Service Release 4

April 2018

This document applies to ARIS Risk & Compliance Manager Version 10.0 and to all subsequent releases.

Specifications contained herein are subject to change and these changes will be reported in subsequent release notes or new editions.

Copyright © 2010 - 2018 Software AG, Darmstadt, Germany and/or Software AG USA Inc., Reston, VA, USA, and/or its subsidiaries and/or its affiliates and/or their licensors.

The name Software AG and all Software AG product names are either trademarks or registered trademarks of Software AG and/or Software AG USA Inc. and/or its subsidiaries and/or its affiliates and/or their licensors. Other company and product names mentioned herein may be trademarks of their respective owners.

Detailed information on trademarks and patents owned by Software AG and/or its subsidiaries is located at <http://softwareag.com/licenses>.

Use of this software is subject to adherence to Software AG's licensing conditions and terms. These terms are part of the product documentation, located at <http://softwareag.com/licenses> and/or in the root installation directory of the licensed product(s).

This software may include portions of third-party products. For third-party copyright notices, license terms, additional rights or restrictions, please refer to "License Texts, Copyright Notices and Disclaimers of Third Party Products". For certain specific third-party license restrictions, please refer to section E of the Legal Notices available under "License Terms and Conditions for Use of Software AG Products / Copyright and Trademark Notices of Software AG Products". These documents are part of the product documentation, located at <http://softwareag.com/licenses> and/or in the root installation directory of the licensed product(s).

Contents

1	Introduction	1
2	Text conventions	2
3	Content of document	3
3.1	Objectives and scope	3
4	ARIS conventions	4
4.1	Modeling levels and model types	4
4.1.1	Overview of modeling levels and their model types	4
4.1.2	Identification of controls and processes	5
4.1.2.1	Process models	5
4.1.2.2	Process modeling at level 1 – Value-added chain diagram (VACD)	6
4.1.2.2.1	Function (ARIS) to Process hierarchy element (ARCM) allocations	7
4.1.2.3	Process modeling at level 2 – Value-added chain diagram (VACD)	9
4.1.2.4	Process and control modeling at level 3 - Event-driven process chain (EPC)	10
4.1.3	Documentation of additional hierarchies in the company	11
4.1.3.1	Regulation hierarchy	12
4.1.3.1.1	Technical term (ARIS) to Regulation element (ARCM) allocations	13
4.1.3.2	Tester hierarchy	15
4.1.3.2.1	Organizational unit (ARIS) to Tester hierarchy element (ARCM) allocations	16
4.1.3.3	Organizational hierarchy	18
4.1.3.3.1	Organizational unit (ARIS) to Organizational hierarchy element (ARCM) allocations	19
4.1.3.4	Risk hierarchy (optional)	21
4.1.4	Create users and user groups	21
4.1.4.1	Role to person allocations	24
4.1.5	Analysis of controls and risks, and derivation of the tests	26
4.1.5.1	Control	29
4.1.5.2	Risk	33
4.1.5.3	Test definition	35
4.1.5.4	General modeling conventions	39
4.1.5.5	Automated control testing	39
4.1.6	Sign-off	39
4.1.6.1	Sign-off using process hierarchy	39
4.1.6.2	Sign-off using regulation hierarchy	40
4.1.6.3	Sign-off using tester hierarchy	41
4.1.6.4	Sign-off using organizational hierarchy	42
5	Support	43
6	Disclaimer	44

1 Introduction

The documentation of business processes and functions using models in ARIS brings a variety of advantages (consistency, reduction of complexity, reusability, potential for evaluation, integrity, etc.).

This is however only possible if the methodological and functional rules and conventions for modeling in ARIS Architect are adhered to. Only then all modeled data can be transferred to ARIS Risk & Compliance Manager and reused there.

2 Text conventions

Menu items, file names, etc. are indicated in texts as follows:

- Menu items, keyboard shortcuts, dialogs, file names, entries, etc. are shown in **bold**.
- Content input that you specify is shown in **<bold and within angle brackets>**.
- Single-line example texts are separated at the end of a line by the character ↵, e.g., a long directory path that comprises multiple lines.
- File extracts are shown in the following font:

`This paragraph contains a file extract.`

3 Content of document

The sections below explain the standards relating to the usage of descriptive views, model types, object types, relationship and connection types, and attributes.

3.1 Objectives and scope

Objective: Specification of modeling guidelines

Not included in this manual: User documentation

4 ARIS conventions

4.1 Modeling levels and model types

4.1.1 Overview of modeling levels and their model types

The figure below shows the process modeling levels and the suggested process model types to be used within them.

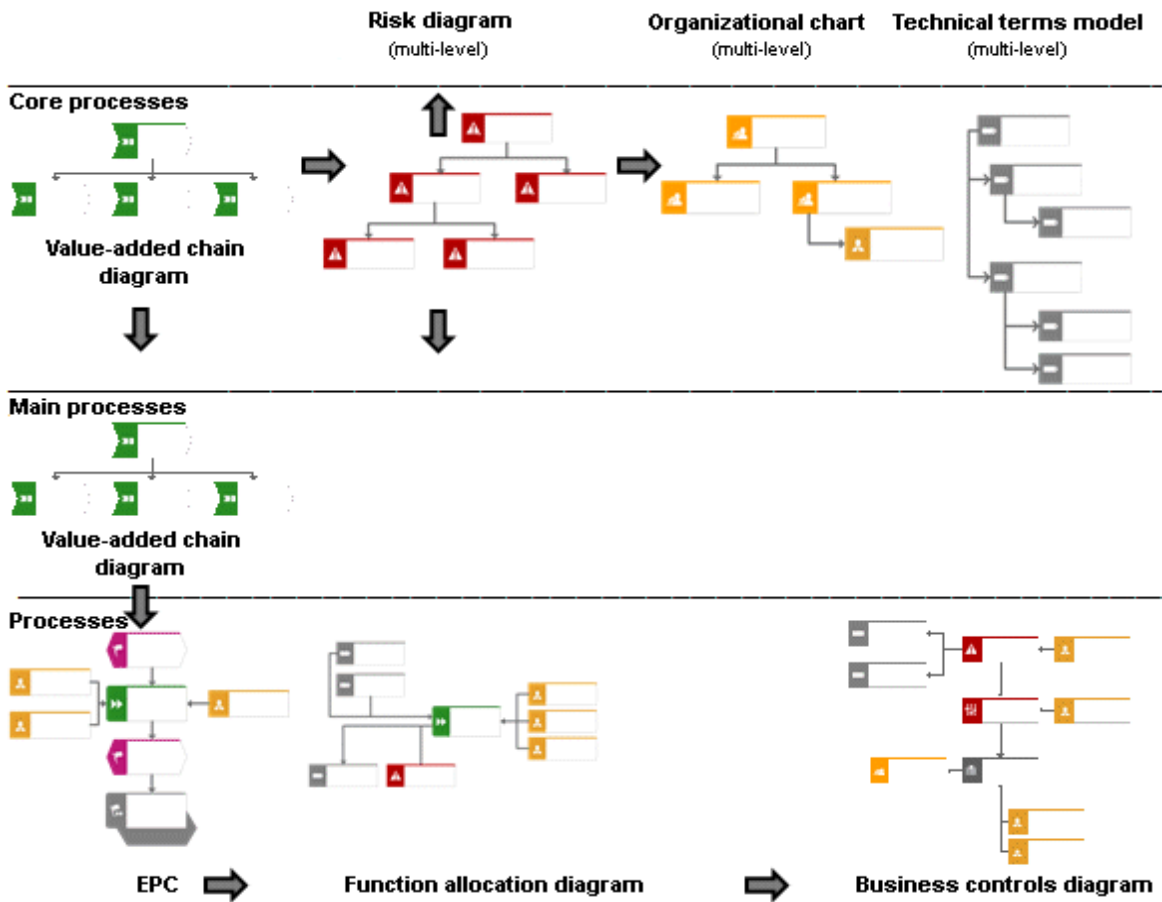


Figure 1: Modeling levels and their model types

4.1.2 Identification of controls and processes

4.1.2.1 Process models

The following process models can be used for setting up the process landscape/process hierarchy.

Model name	Model type number
Value-added chain diagram	12
EPC	13
Function allocation diagram	14
PCD	18
EPC (material flow)	50
PCD (material flow)	51
EPC (column display)	134
EPC (row display)	140
EPC (table display)	154
EPC (horizontal table display)	173
Enterprise BPMN collaboration diagram	272
Enterprise BPMN process diagram	273

The following chapters include a modeling example of the process landscape.

4.1.2.2 Process modeling at level 1 – Value-added chain diagram (VACD)

The overview process model is the central model at level 1. This is modeled using the **value-added chain diagram** model type. This core process overview is used as the entry model.

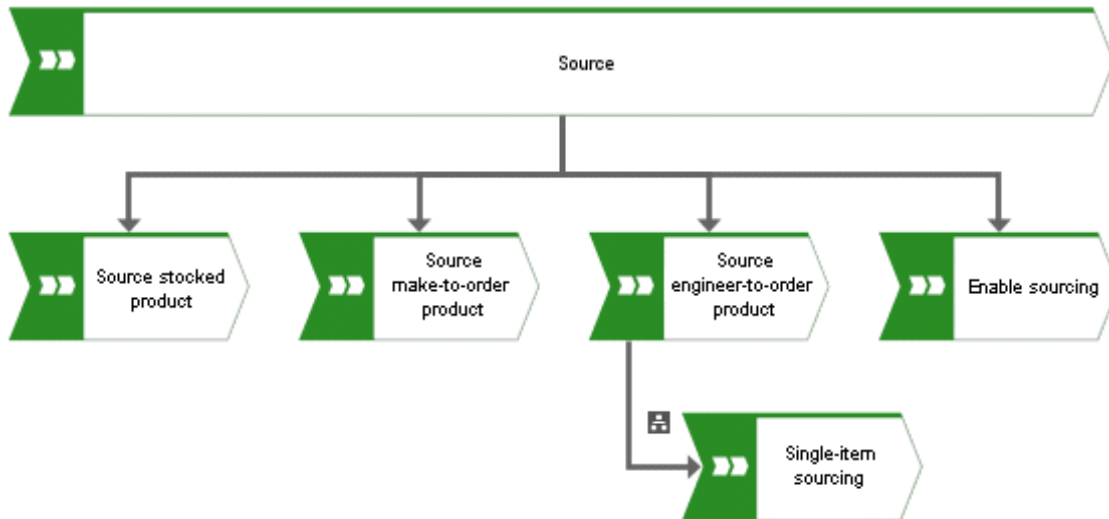


Figure 2: Level 1 – Value-added chain diagram

The object type used is **Function** (OT_FUNC). The hierarchy between the objects is represented by the **is process-oriented superior** or **is process-oriented subordinate** connection. In ARIS Risk & Compliance Manager, only a tree structure for hierarchies is allowed. Therefore, each function can only have one superior function. The following model types can be assigned to an object type in a VACD:

Object type	Assigned model type
Function [Value-added chain]	VACD
Function [Value-added chain]	Function allocation diagram

Thus, a hierarchy element is created in ARIS Risk & Compliance Manager for each relevant function. Exception: The top hierarchy element already exists in ARIS Risk & Compliance Manager.

4.1.2.2.1 Function (ARIS) to Process hierarchy element (ARCM) allocations

The following allocations are applicable for the **Function** object:

ARIS object	ARIS attribute	API name	M*	ARCM object	ARCM attribute	Notes
Function	Name	AT_NAME	X	HIERARCHY	name	
				HIERARCHY	isroot	True only for the top hierarchy element.
				HIERARCHY	hnumber	Not relevant for the process hierarchy.
				HIERARCHY	type	Process hierarchy (value 4)
Function	Description/Definition	AT_DESC		HIERARCHY	description	
			X	HIERARCHY	status	Status is true (if active)
Function	Sign-off-relevant	AT_AAM_SIGN_OFF_RELEVANT	X	HIERARCHY	signoff	
Function	Model link	AT_AAM_MOD_LINK		HIERARCHY	modellink	
				HIERARCHY	modelguid	GUID of the model containing an occurrence of the function. The first available process model (EPC, VACD, etc.) is selected.
				HIERARCHY	model_name	Name of the model (see above)

ARIS object	ARIS attribute	API name	M*	ARCM object	ARCM attribute	Notes
Function	Object link	AT_AAM_OBJ_LINK		HIERARCHY	objectlink	
Function	GUID of object			HIERARCHY	objectguid	
				HIERARCHY	children	Subordinate hierarchy element
				HIERARCHY	so_owner	Associated sign-off owner group
				HIERARCHY	tester	Not relevant for this hierarchy type.

*The **M** column specifies whether the attribute is a mandatory field.

4.1.2.3 Process modeling at level 2 – Value-added chain diagram (VACD)

The value-added chain diagram is used as the model at level 2. Level 2 is used to represent the main processes and to map the context of the sub-processes located at level 3.

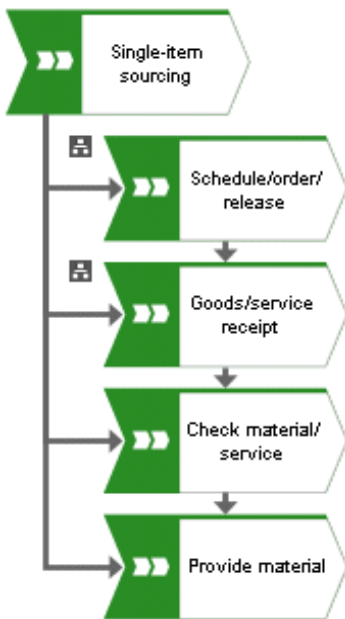


Figure 3: Level 2 – Value-added chain diagram

The same conventions apply as for the core processes modeled as a value-added chain.

The following model types can be assigned to an object type in the VACD:

Object type	Assigned model type
Function	EPC
Function	Function allocation diagram

4.1.2.4 Process and control modeling at level 3 - Event-driven process chain (EPC)

You can describe a company's processes using an EPC. It is based on the logical and chronological sequence of the activities to be carried out. In addition, a sequence of functions and resulting events is used. These lean processes can be supplemented by additional objects (organizational units, positions (roles), application systems, etc.) containing extended information. Thus for example, a control with the **is carried out at** connection can be linked directly with a function in an EPC.

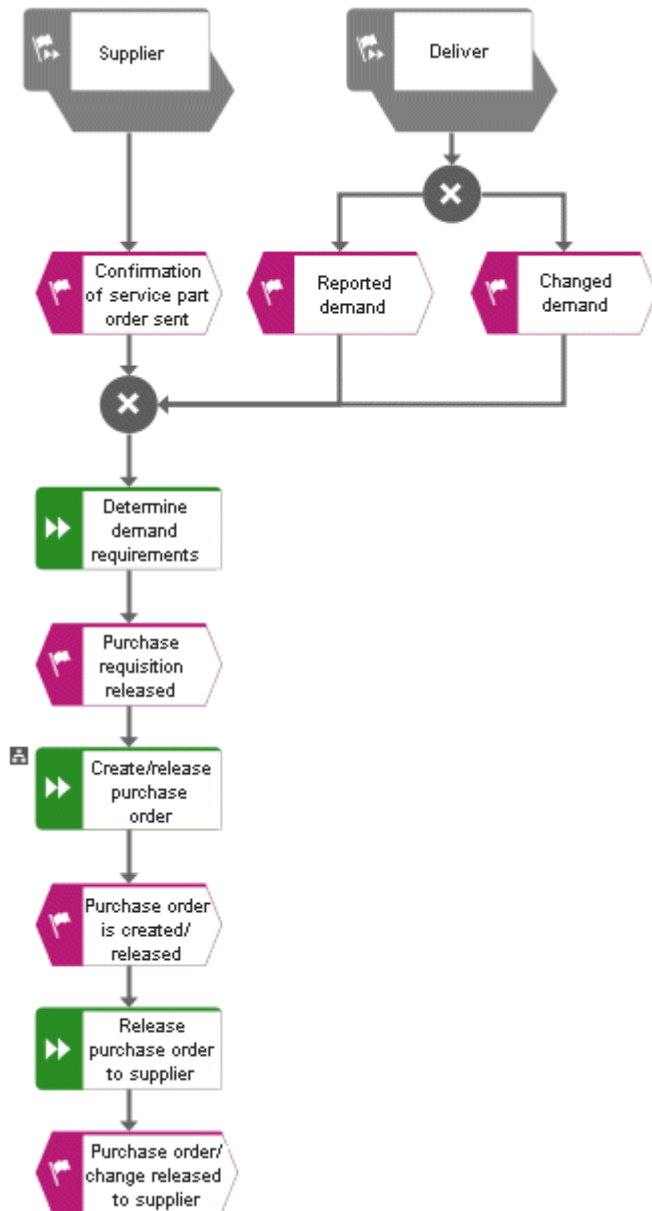


Figure 4: Level 3 – Event-driven process chain

The following model types can be assigned to an object type in an EPC:

Object type	Assigned model type
Function	EPC
Function	Function allocation diagram
Control (OT_FUNC, ST_CONTR)	EPC
Control (OT_FUNC, ST_CONTR)	Business controls diagram

LEVEL 3 – FUNCTION ALLOCATION DIAGRAM (FAD)

EPCs can also be modeled as lean EPCs, that is, without organizational units, positions and application systems. The relationships between these additional objects and a function are then modeled in a function allocation diagram, which is assigned to the function. The object and symbol types in the function allocation diagram are those that change a lean EPC into an extended EPC. These are:

- Function
- Position
- Organizational unit
- Organizational unit type
- Group
- Role
- Internal person
- Application system
- Application system type
- Information carrier (file, document)
- Control (object type: OT_FUNC, symbol type: ST_CONTR)

4.1.3 Documentation of additional hierarchies in the company

Only a tree structure is allowed for all hierarchies to be transferred to ARIS Risk & Compliance Manager. This means that each element in the hierarchy can have only one superior item.

4.1.3.1 Regulation hierarchy

The regulation hierarchy is modeled in the technical terms model in ARIS using the **Technical term** object (OT_TECH_TRM). The **Regulations** attribute can be used to uniquely identify regulations (API name: AT_AAM_ANNUAL_ACCOUNTS_ITEM). The hierarchy between the objects is represented by the **has** connection.

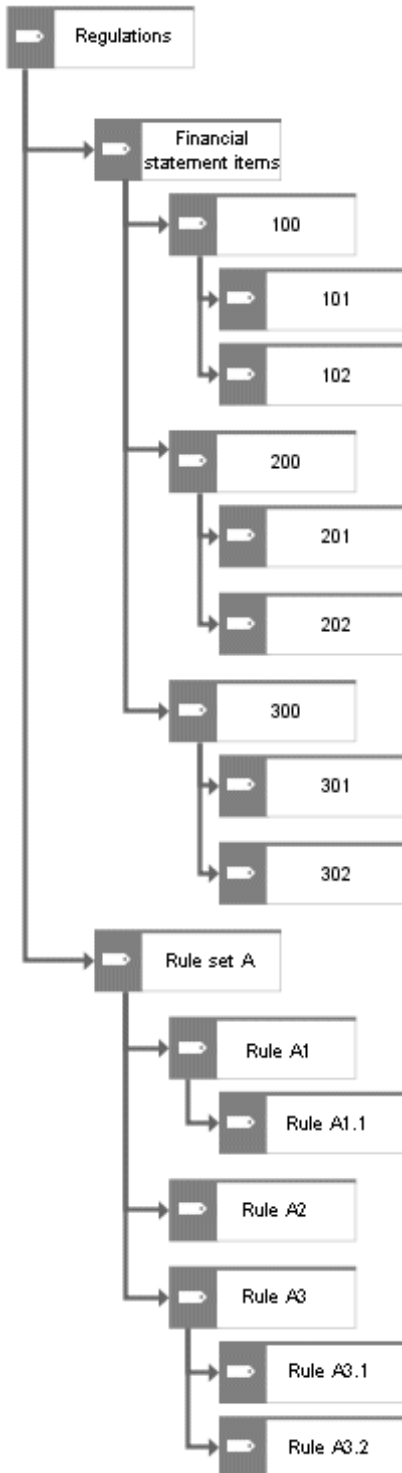


Figure 5: Regulation hierarchy structure

4.1.3.1.1 Technical term (ARIS) to Regulation element (ARCM) allocations

The following attribute allocations are applicable for the **Technical term** object:

ARIS object	ARIS attribute	API name	M*	ARCM object	ARCM attribute	Notes
Technical term	Name	AT_NAME	X	HIERARCHY	name	
				HIERARCHY	isroot	True only for the top hierarchy element.
Technical term	Short description	AT_SHORT_DESC		HIERARCHY	hnumber	
				HIERARCHY	type	Regulation hierarchy (Value = 2)
Technical term	Description/Definition	AT_DESC		HIERARCHY	description	
				X	HIERARCHY	status
Technical term	Sign-off-relevant	AT_AAM_SIGN_OFF_RELEVANT	X	HIERARCHY	signoff	
Technical term	Model link	AT_AAM_MOD_LINK		HIERARCHY	modellink	
				HIERARCHY	modelguid	GUID of the model containing an occurrence of the technical term. The first available technical term model is selected.
				HIERARCHY	model_name	Name of the model (see above)
Technical term	Object link	AT_AAM_OBJ_LINK		HIERARCHY	objectlink	

ARIS object	ARIS attribute	API name	M*	ARCM object	ARCM attribute	Notes
Technical term	GUID of object			HIERARCHY	objectguid	
				HIERARCHY	children	Subordinate hierarchy element
				HIERARCHY	so_owner	Associated sign-off owner group
				HIERARCHY	tester	Not relevant for this hierarchy type.

*The **M** column specifies whether the attribute is a mandatory field.

4.1.3.2 Tester hierarchy

The tester hierarchy is modeled in the organizational chart in ARIS using the **Organizational unit** object (OT_ORG_UNIT). The hierarchy between the objects is represented by the **is superior** connection.

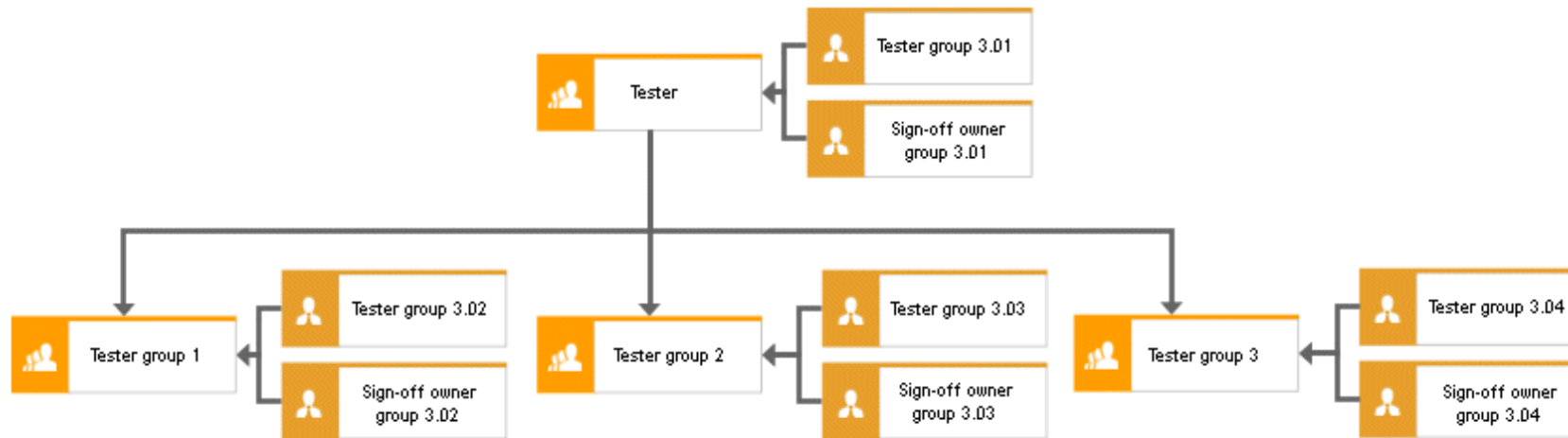


Figure 6: Tester hierarchy structure

A tester hierarchy element is therefore created in ARIS Risk & Compliance Manager for each organizational unit (exception: the top hierarchy element already exists in ARIS Risk & Compliance Manager). At present, each hierarchy element can only be assigned to one user group (Page 21). Thus, for the above example, the tester hierarchy elements **Tester**, **Tester group 1**, **Tester group 2** and **Tester group 3** are created in ARIS Risk & Compliance Manager. **Tester** is superior to the other hierarchy elements.

4.1.3.2.1 Organizational unit (ARIS) to Tester hierarchy element (ARCM) allocations

The following attribute allocations apply to the **Organizational unit** object:

ARIS object	ARIS attribute	API name	M*	ARCM object	ARCM attribute	Notes
Organizational unit	Name	AT_NAME	X	HIERARCHY	name	
				HIERARCHY	isroot	True only for the top hierarchy element.
				HIERARCHY	hnumber	Not relevant for the tester hierarchy.
				HIERARCHY	type	Tester hierarchy (value = 1)
Organizational unit	Description/Definition	AT_DESC		HIERARCHY	description	
			X	HIERARCHY	status	Status is true (if active)
Organizational unit	Sign-off-relevant	AT_AAM_SIGN_OFF_RELEVANT	X	HIERARCHY	signoff	
Organizational unit	Model link	AT_AAM_MOD_LINK		HIERARCHY	modellink	

ARIS object	ARIS attribute	API name	M*	ARCM object	ARCM attribute	Notes
				HIERARCHY	modelguid	GUID of the model containing an occurrence of the organizational unit. The first available organizational chart is selected.
				HIERARCHY	model_name	Name of the model (see above)
Organizational unit	Object link	AT_AAM_OBJ_LINK		HIERARCHY	objectlink	
Organizational unit	GUID of object			HIERARCHY	objectguid	
				HIERARCHY	children	Subordinate hierarchy unit
				HIERARCHY	so_owner	Associated sign-off owner group
				HIERARCHY	tester	Associated tester groups

*The **M** column specifies whether the attribute is a mandatory field.

4.1.3.3 Organizational hierarchy

The organizational hierarchy is modeled in the organizational chart in ARIS using the **Organizational unit** object (OT_ORG_UNIT). The **Group** (OT_GRP), **Position** (OT_POS) and **Location** (OT_LOC) objects can be also used. The hierarchy between the objects is represented by the **is superior** connection.

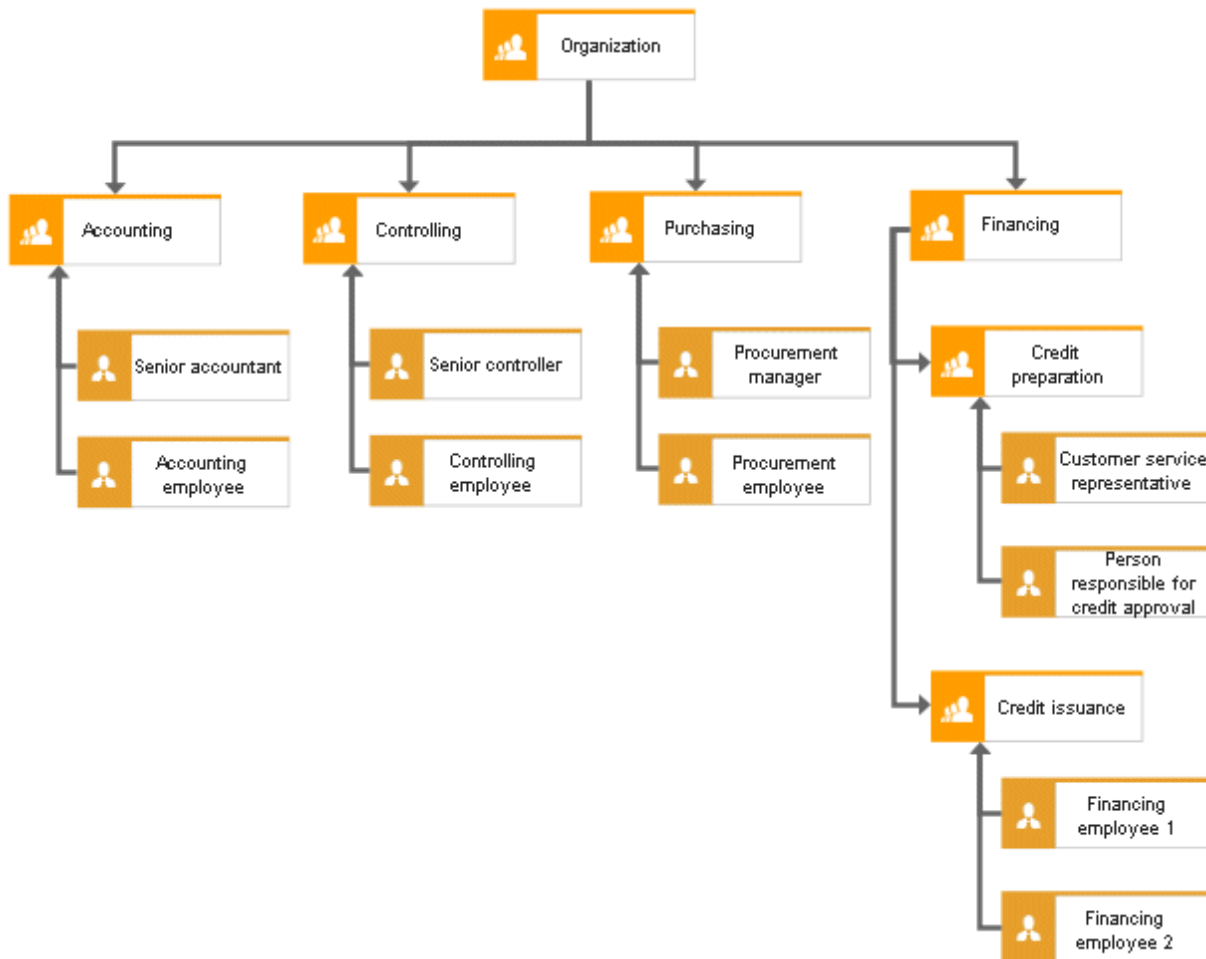


Figure 7: Organizational hierarchy structure

Thus, for each organizational unit, an organizational hierarchy element is created. Exception: The top hierarchy element already exists in ARIS Risk & Compliance Manager.

Thus, for the above example, the organizational hierarchy elements **Organization**, **Accounting**, **Controlling** and **Purchasing** are created in ARIS Risk & Compliance Manager. **Organization** is superior to the other hierarchy elements.

4.1.3.3.1 Organizational unit (ARIS) to Organizational hierarchy element (ARCM) allocations

The following attribute allocations apply to the **Organizational unit** object:

ARIS object	ARIS attribute	API name	M*	ARCM object	ARCM attribute	Notes
Organizational unit	Name	AT_NAME	X	HIERARCHY	name	
				HIERARCHY	isroot	True only for the top hierarchy element.
				HIERARCHY	hnumber	Not relevant for the organizational hierarchy.
				HIERARCHY	type	Organizational hierarchy (value = 3)
Organizational unit	Description/Definition	AT_DESC		HIERARCHY	description	
			X	HIERARCHY	status	Status is true (if active)
Organizational unit	Sign-off-relevant	AT_AAM_SIGN_OFF_RELEVANT	X	HIERARCHY	signoff	
Organizational unit	Model link	AT_AAM_MOD_LINK		HIERARCHY	modellink	

ARIS object	ARIS attribute	API name	M*	ARCM object	ARCM attribute	Notes
				HIERARCHY	modelguid	GUID of the model containing an occurrence of the organizational unit. The first available organizational chart is selected.
				HIERARCHY	model_name	Name of the model (see above)
Organizational unit	Object link	AT_AAM_OBJ_LINK		HIERARCHY	objectlink	
Organizational unit	GUID of object			HIERARCHY	objectguid	
				HIERARCHY	children	Subordinate hierarchy elements
				HIERARCHY	so_owner	Associated sign-off owner group
				HIERARCHY	tester	Not relevant for the organizational hierarchy.

*The **M** column specifies whether the attribute is a mandatory field.

4.1.3.4 Risk hierarchy (optional)

The risk hierarchy is modeled in the risk diagram in ARIS. The categorization of risks (OT_RISK) can be carried out here. Risks can be made subordinate to categories (OT_RISK_CATEGORY) and the categories can in turn be made subordinate to other categories using the **encompasses** or **contains** relationship. This is used for structuring, but is only transferred in connection with the **Operational Risk Management** component.

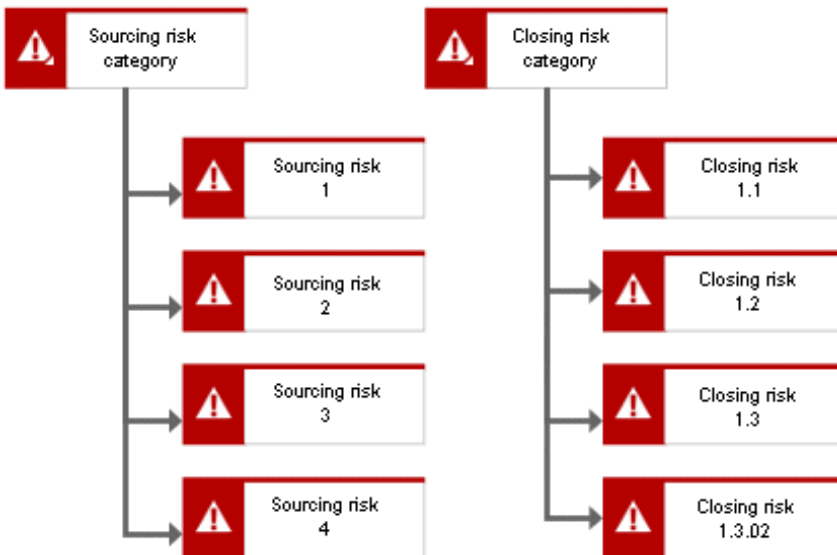


Figure 8: Risk hierarchy structure

4.1.4 Create users and user groups

Users and user groups are modeled in an organizational chart in ARIS Architect using the **Person** (OT_PERS) and **Role** (OT_PERS_TYPE) objects.



Figure 9: Structure of users/user groups

The superior role (**Sign-off manager_2**) determines the role held by the subordinate roles in ARIS Risk & Compliance Manager. Both roles are connected to one another with the **is generalization of** connection. **Sign-off manager group 2.01** is thus, a generalization of **Sign-off manager_2**. The name of the superior role defines the role and level of the group to be created. <role>_<level>, that is: Sign-off manager_2 > role: sign-off manager, level: 2 (or environment-specific). No user group is generated in ARIS Risk & Compliance Manager for the superior role (in this case, Sign-off manager_2).

The following applies to the various role levels:

- Role level 1: cross-environment
The privileges assigned to the user group based on its role apply to all environments assigned to the user group.
- Role level 2: environment-specific
The privileges assigned to the user group based on its role apply to the environment in which the user group was created.
- Role level 3: object-specific
The privileges assigned to the user group based on its role apply to the relevant objects of the current environment in which the user group was created.

For the above example, the **Sign-off manager group 2.01** user group is generated in ARIS Risk & Compliance Manager with the **Sign-off manager** role and level **2** (that is, cross-environment privileges). In addition, a user with the user ID **SOM_01** is generated.

MAPPING ROLE NAME (ARCM) TO ROLE (ARIS)

The following allocations are applicable for the user groups in ARIS Risk & Compliance Manager and the naming to be used in ARIS Architect. Further roles are described in the other convention manuals.

Role (ARCM)	Role (ARIS)	Role level
roles.testauditor	Test auditor	Level 1, 2, and 3
roles.testauditorexternal	Test auditor external	Level 1 and 2
roles.deficiencyauditor.l1	Deficiency auditor (L1)	Level 1 and 2
roles.deficiencyauditor.l2	Deficiency auditor (L2)	Level 1 and 2
roles.deficiencyauditor.l3	Deficiency auditor (L3)	Level 1 and 2
roles.deficiencymanager.l1	Deficiency manager (L1)	Level 1, 2, and 3
roles.deficiencymanager.l2	Deficiency manager (L2)	Level 1, 2, and 3
roles.deficiencymanager.l3	Deficiency manager (L3)	Level 1, 2, and 3
roles.groupusermanager	User/User group manager	Level 1 and 2
roles.hierarchymanager	Hierarchy manager	Level 1 and 2
roles.riskmanager	Risk manager	Level 1, 2, and 3
roles.controlmanager	Control manager	Level 1, 2, and 3
roles.signoffmanager	Sign-off manager	Level 2 and 3
roles.signoffreviewer	Sign-off reviewer	Level 3 only
roles.signoffowner	Sign-off owner	Level 3 only
Roles.testmanager	Test manager	Level 1, 2, and 3

Role (ARCM)	Role (ARIS)	Role level
roles.testreviewer	Test reviewer	Level 3 only
roles.tester	Tester	Level 3 only
roles.issueauditor	Issue auditor	Level 1 and 2
roles.issuemanager	Issue manager	Level 1 and 2
roles.incidentauditor	Incident auditor	Level 1 and 2
roles.incidentmanager	Incident manager	Level 1 and 2
roles.incidentreviewer	Incident reviewer	Level 3 only
roles.incidentowner	Incident owner	Level 3 only
roles.lossauditor	Loss auditor	Level 1 and 2
roles.lossmanager	Loss manager	Level 1 and 2
roles.lossreviewer	Loss reviewer	Level 3 only
roles.lossowner	Loss owner	Level 3 only

4.1.4.1 Role to person allocations

ROLE (ARIS) TO USER GROUP (ARCM) ALLOCATIONS

The following allocations are applicable for the **Role** (user group) object:

ARIS attribute	API name	ARCM attribute	M*	Notes
Name	AT_NAME	name	X	The name of a user group is limited to 250 characters.
Description/ Definition	AT_DESC	description	-	
Role	–	role	X	The values for role and role level are determined as described above.
Role level	–	rolelevel	X	
Users	–	groupmembers	-	Users are determined by the performs connection between the person and the role.

*The **M** column specifies whether the attribute is a mandatory field.

PERSON (ARIS) TO USER (ARCM) ALLOCATIONS

The following allocations are applicable for the **Person** (user) object:

ARIS attribute	API name	ARCM attribute	M*	Notes
Login	AT_LOGIN	Userid	X	The user ID of a user is limited to 250 characters.
First name	AT_FIRST_NAME	firstname	X	
Last name	AT_LAST_NAME	lastname	X	
		name	-	Is a combination of the last and first name.
Description/ Definition	AT_DESC	description	-	
E-mail address	AT_EMAIL_ADDR	email	X	
Telephone number	AT_PHONE_NUM	phone	-	
		clients	-	The Environments field is identified by the environment into which data is imported.
		substitutes	-	The Substitutes field is only maintained manually.

*The **M** column specifies whether the attribute is a mandatory field.

4.1.5 Analysis of controls and risks, and derivation of the tests

For the controls identified in the processes, the associated risks and test definitions including responsibilities can be defined in the business controls diagram. In addition, effects on the company's hierarchies can be documented, for example, which control affects which balance sheet item.

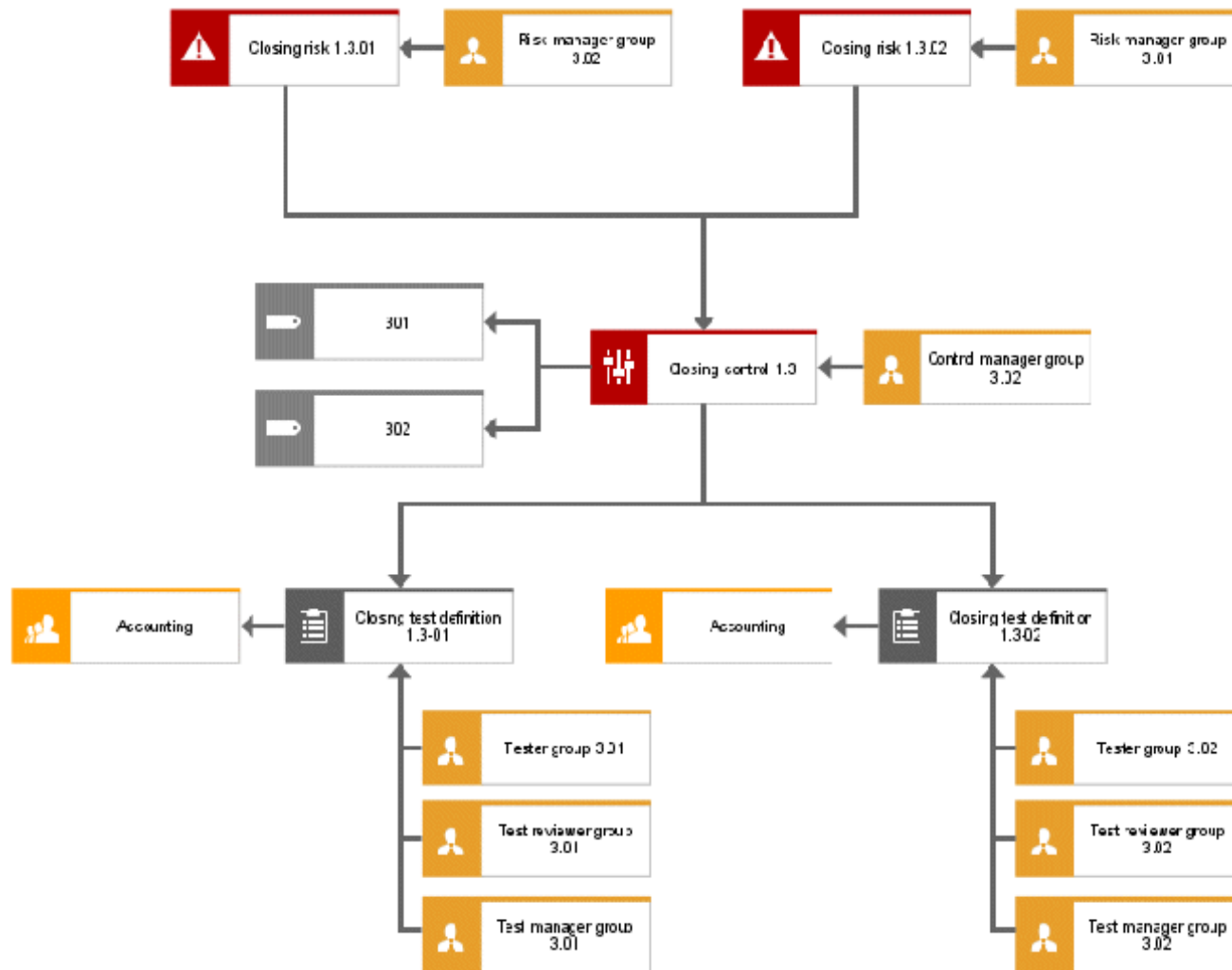


Figure 10: Business controls diagram structure

Assignment of a risk manager group, test manager group, and control manager group is optional.

RELATIONSHIPS BETWEEN RISK OBJECT AND ASSOCIATED OBJECTS

The following connections are relevant between the objects in the business control diagram:

Object	Connection	Object	Notes
Control	affects	Technical term	This connection creates the relationship to the regulations.
Control	is monitored by	Test definition	This connection creates the relationship to the test definition.
Control	is technically responsible for	Role	This connection creates the relationship to the control manager.
Risk	is technically responsible for	Role	This connection creates the relationship to the risk manager.
Risk	is reduced by	Control	This connection creates the relationship to the control.
Test definition	affects	Organizational unit	This connection creates the relationship to the organizational unit concerned.
Test definition	is assigned to	Role	This connection creates the relationship to the tester, test reviewer and to the test manager.

4.1.5.1 Control

The control is modeled in ARIS using the **Function** object (OT_FUNC) and the default symbol **Control** (ST_CONTR). A control is created in ARIS Risk & Compliance Manager for each control for which the **Synchronize ARCM** attribute is set. A control must be uniquely defined and cannot be reused.

FUNCTION (CONTROL) (ARIS) TO CONTROL (ARCM) ALLOCATION

The following allocations are applicable for the Function (control) object:

ARIS object	ARIS attribute	API name	M*	ARCM object	ARCM attribute	Notes
Control	Name	AT_NAME	X	control	name	
Control	Control ID	AT_AAM_CTRL_ID		control	control_id	
				control	manager_group	Determined by the connection to the role and saves a corresponding link to the control manager in ARIS Risk & Compliance Manager.
Control	Control frequency	AT_AAM_CTRL_FREQUENCY	X	control	control_frequency	

ARIS object	ARIS attribute	API name	M*	ARCM object	ARCM attribute	Notes
Control	Control execution	AT_AAM_CTRL_EXECUTION_ MANUAL AT_AAM_CTRL_EXECUTION_ IT	X	control	control_execution	The enumeration is set in ARIS Risk & Compliance Manager when the values are true.
Control	Effect of control	AT_AAM_CTRL_EFFECT	X	control	control_effect	
Control	COSO component	AT_AAM_COSO_COMPONENT_ CTRL_ENVIRONMENT AT_AAM_COSO_COMPONENT_ RISK_ASSESSMENT AT_AAM_COSO_COMPONENT_ CTRL_ACTIVITIES AT_AAM_COSO_COMPONENT_ INFO_COMMUNICATION AT_AAM_COSO_COMPONENT_ MONITORING		control	control_type	The enumeration is set in ARIS Risk & Compliance Manager when the values are true.
Control	Control activity	AT_AAM_CTRL_ACTIVITY	X	control	controls	
Control	Control objective	AT_AAM_CTRL_OBJECTIVE		control	control_objective	
Control	Key control	AT_AAM_KEY_CTRL	X	control	key_control	

ARIS object	ARIS attribute	API name	M*	ARCM object	ARCM attribute	Notes
Control	Assertions	AT_AAM_ASSERTIONS_EXIST_ OCCURRENCE AT_AAM_ASSERTIONS_ COMPLETENESS AT_AAM_ASSERTIONS_ RIGHTS_OBLIGATIONS AT_AAM_ASSERTIONS_ VALUATION_ALLOCATION AT_AAM_ASSERTIONS_ PRESENTATION_DISCLOSURE AT_AAM_ASSERTIONS_NA	X	control	assertions	The enumeration is set in ARIS Risk & Compliance Manager when the values are true. A dependency of values exists. The first 5 values cannot occur in combination with the last entry.
				control	control_function	Is identified via the connection to the function. A corresponding link to the process hierarchy element in ARIS Risk & Compliance Manager is saved.

ARIS object	ARIS attribute	API name	M*	ARCM object	ARCM attribute	Notes
				control	testdefinitions	Is identified via the connection to the test definition. A corresponding link to the test definition in ARIS Risk & Compliance Manager is saved.
			X	control	financial_statement	Is identified via the connection to the technical term. A corresponding link to the regulation hierarchy element in ARIS Risk & Compliance Manager is saved.

*The **M** column specifies whether the attribute is a mandatory field.

4.1.5.2 Risk

Risks are modeled in ARIS using the **Risk** object (OT_RISK). Only those risks are relevant for synchronization with ARIS Risk & Compliance Manager that are modeled at a control for which the **Synchronize ARCM** attribute is set. It is possible to reuse risks.

RISK (ARIS) TO RISK (ARCM) ALLOCATIONS

The following allocations are applicable for the **Risk** object:

ARIS object	ARIS attribute	API name	M*	ARCM object	ARCM attribute	Notes
Risk	Name	AT_NAME	X	risk	name	
Risk	Risk ID	AT_AAM_RISK_ID		risk	risk_id	
Risk	Risk types	AT_AAM_RISK_TYPE_ FINANCIAL_REPORT AT_AAM_RISK_TYPE_ COMPLIANCE AT_AAM_RISK_TYPE_ OPERATIONS AT_AAM_RISK_TYPE_ STRATEGIC	X	risk	risktype	The enumeration is set in ARIS Risk & Compliance Manager when the values are true.
Risk	Description/Definition	AT_DESC	X	risk	description	
Risk	Impact	AT_AAM_IMPACT	X	risk	impact	
Risk	Probability	AT_AAM_PROBABILITY	X	risk	probability	
Risk	Risk catalog 1	AT_AAM_RISK_CATALOG_1		risk	risk_catalog1	
Risk	Risk catalog 2	AT_AAM_RISK_CATALOG_2		risk	risk_catalog2	

ARIS object	ARIS attribute	API name	M*	ARCM object	ARCM attribute	Notes
Risk	Title 1 and link 1 to title 4 and link 4	AT_TITL1 and AT_EXT_1, etc.		risk	documents	A document (O_10) is generated in ARIS Risk & Compliance Manager from the title and the link and is linked to the risk.
				risk	controls	Is identified via the connection to the control. A corresponding link to the control in ARIS Risk & Compliance Manager is saved.
				risk	manager_group	Is identified via the connection to the role. A corresponding link to the risk manager in ARIS Risk & Compliance Manager is saved.

*The **M** column specifies whether the attribute is a mandatory field.

4.1.5.3 Test definition

The test definition is modeled in ARIS using the **Test definition** object (OT_TEST_DEFINITION). Only those test definitions are relevant for synchronization with ARIS Risk & Compliance Manager that are modeled at a control for which the **Synchronize ARCM** attribute is set.

TEST DEFINITION (ARIS) TO TEST DEFINITION (ARCM) ALLOCATION

The following allocations are applicable for the **Test definition** object:

ARIS object	ARIS attribute	API name	M*	ARCM object	ARCM attribute	Notes
Test definition	Name	AT_NAME	X	testdefinition	name	
Test definition	Test activity	AT_AAM_TEST_ACTIVITY	X	testdefinition	testingsteps	
Test definition	Nature of test	AT_AAM_TEST_NATURE_INQUIRY AT_AAM_TEST_NATURE_OBSERVATION AT_AAM_TEST_NATURE_EXAMINATION AT_AAM_TEST_NATURE_REPERFORMANCE	X	testdefinition	test_nature	The enumeration is set in ARIS Risk & Compliance Manager when the values are true.
Test definition	Test type	AT_AAM_TEST_TYPE_DESIGN AT_AAM_TEST_TYPE_EFFECTIVENESS	X	testdefinition	test_type	The enumeration is set in ARIS Risk & Compliance Manager when the values are true.
Test definition	Test size	AT_AAM_TEST_SCOPE	X	testdefinition	testextend	

ARIS object	ARIS attribute	API name	M*	ARCM object	ARCM attribute	Notes
			X	testdefinition	owner_group	Is identified via the connection to the role using the Tester role. A corresponding link to the tester in ARIS Risk & Compliance Manager is saved.
Test definition	Event-driven test cases allowed	AT_EVENT_DRIVEN_TESTS_ALLOWED	X	testdefinition	event_driven_allowed	If true is set, the test-definition is used only for automated control tests. At the same time, the test frequency must be set to event-driven .
Test definition	Test frequency	AT_AAM_TEST_FREQUENCY	X	testdefinition	testfrequency	
Test definition	Time limit for execution in days	AT_AAM_TEST_DURATION	X	testdefinition	testduration	
Test definition	Start date of test definition	AT_AAM_TESTDEF_START_DATE	X	testdefinition	testdefinition_startdate	
Test definition	End date of test definition	AT_AAM_TESTDEF_END_DATE		testdefinition	testdefinition_enddate	
Test definition	Length of control period	AT_AAM_TESTDEF_CTRL_PERIOD	X	testdefinition	control_period	

ARIS object	ARIS attribute	API name	M*	ARCM object	ARCM attribute	Notes
Test definition	Offset in days	AT_AAM_TESTDEF_OFFSET	X	testdefinition	offset	
			X	testdefinition	reviewer_group	Is identified via the connection to the role using the Test reviewer role. A corresponding link to the test reviewer in ARIS Risk & Compliance Manager is saved.
			X	testdefinition	manager_group	Is identified via the connection to the role using the Test manager role. A corresponding link to the test manager in ARIS Risk & Compliance Manager is saved.
			X	testdefinition	effected_orgunit	Is identified via the connection to the organizational unit, group, position, or location. A corresponding link to the relevant organizational unit in ARIS Risk & Compliance Manager is saved.

ARIS object	ARIS attribute	API name	M*	ARCM object	ARCM attribute	Notes
Test definition	Follow-up allowed	AT_AAM_TESTDEF_ FOLLOWUP	X	testdefinition	isfollowup	

*The **M** column specifies whether the attribute is a mandatory field.

4.1.5.4 General modeling conventions

Controls within the modeled business controls diagrams must be unique and can have an occurrence in not more than one business controls diagram. They can only be connected to precisely one function and at least one test definition.

A risk can have an occurrence in no more than one business controls diagram. A risk can be connected to at least one control for which the **Synchronize ARCM** attribute is specified.

A test definition must be unique within the modeled business controls diagram and can have an occurrence in no more than one of these diagrams. At the same time, a test definition can be connected to precisely one control for which the **Synchronize ARCM** attribute is specified.

4.1.5.5 Automated control testing

To carry out automated control tests per event enabling the **Event-driven test cases allowed** attribute must be set to **true**. Automated control testing can then be carried out ad-hoc, for example, driven by an external event.

In addition, the **Event-driven** attribute value must be selected for the **Test frequency** attribute, in order to prevent the system from generating test cases during the year. This frequency is used only for processing ad-hoc tests.

4.1.6 Sign-off

4.1.6.1 Sign-off using process hierarchy

For sign-off, the relationship between the function and the sign-off owner group (role) is modeled in a value-added chain diagram. An example can be seen in the following figure.

The initial selection of functions relevant for synchronization is determined by the **Synchronize ARCM** attribute set on the **is carried out at** connection to the controls.

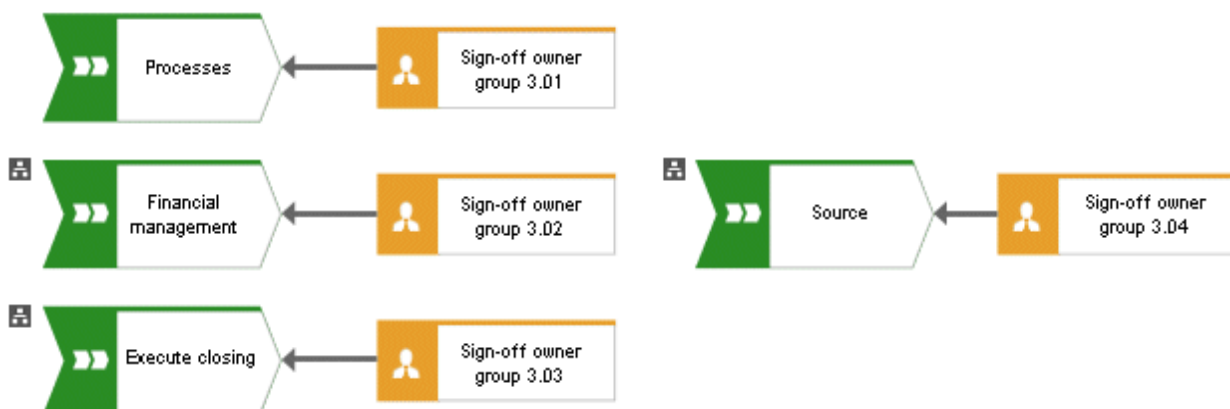


Figure 11: Allocation of function – Sign-off owner group

The **decides on** connection creates a link between a sign-off owner group (user group) and a process hierarchy element.

4.1.6.2 Sign-off using regulation hierarchy

For sign-off using the regulation hierarchy, the relationship between the regulations and the sign-off owner group is modeled in a function allocation diagram. The **is owner of** connection creates a link between the user group and a hierarchy element.

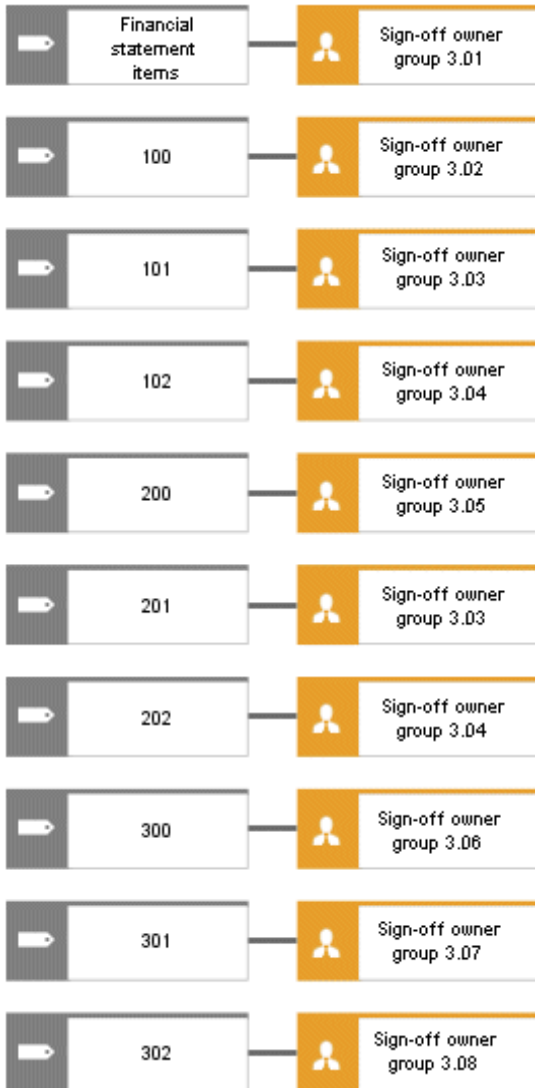


Figure 12: Allocation of regulations – Sign-off owner group

4.1.6.3 Sign-off using tester hierarchy

For sign-off using the tester hierarchy, the relationship between the organizational unit and the sign-off owner group is modeled in the organizational chart of the tester hierarchy. The **belongs to** connection creates a link between the user group and the hierarchy element.

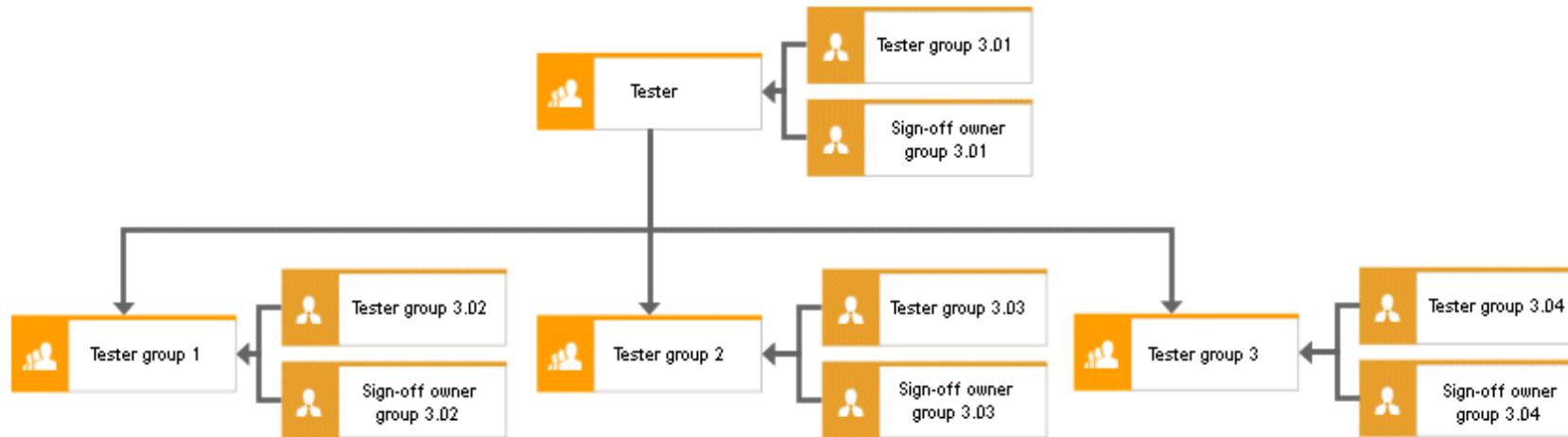


Figure 13: Allocation of organizational unit (tester) – Sign-off owner group

4.1.6.4 Sign-off using organizational hierarchy

For sign-off, the relationship between the organizational units and the sign-off owner groups is modeled in the organizational chart of the company organization. The **belongs to** connection creates a link between the user group and the hierarchy element.

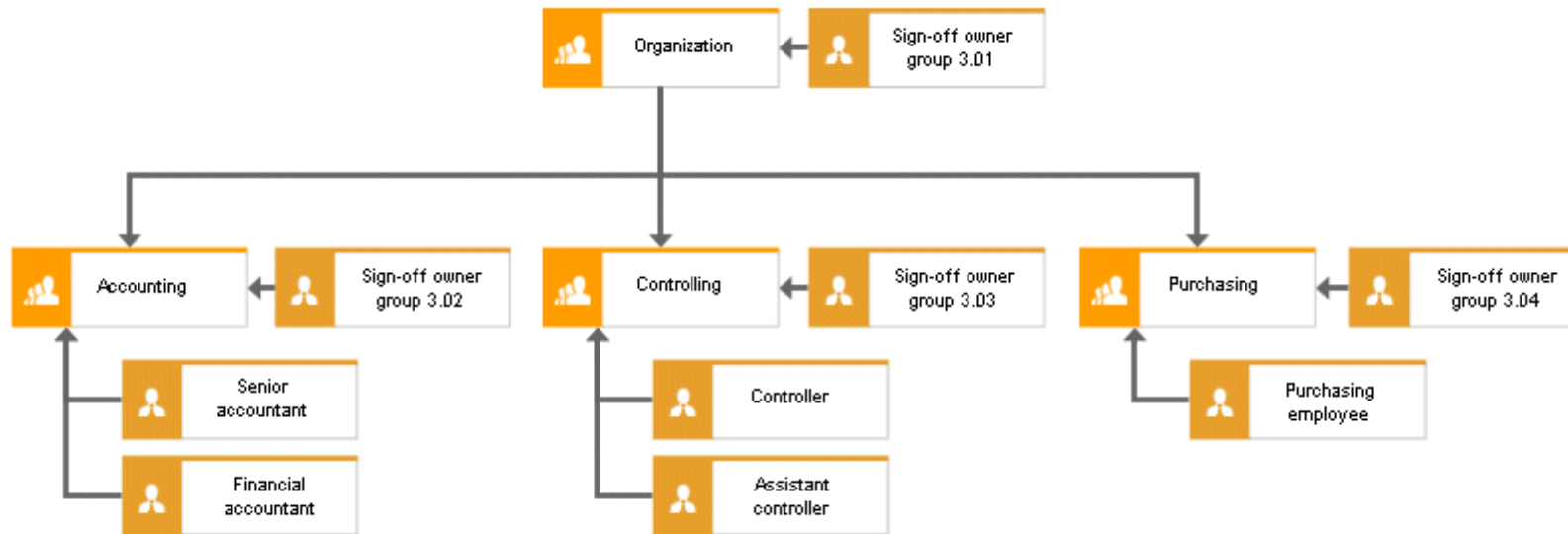


Figure 14: Allocation of organizational unit – Sign-off owner group

5 Support

ON THE WEB

Open **Empower** (<https://empower.softwareag.com/>) to get support.

With a valid support contract you can access the solution database.

For questions about special installations that you cannot carry out yourself, please contact your local Software AG sales organization.

BY PHONE

With a valid support contract you can reach Global Support ARIS at:

+800 ARISHELP

The "+" stands for the respective prefix for making an international connection in this land.

An example of the number to be dialed within Germany using a land line: 00 800 2747 4357

If this number is not supported by your telephone provider, please refer to Empower https://empower.softwareag.com/public_directory.asp.

6 Disclaimer

ARIS products are intended and developed for use by people. Automatic processes such as generation of content and import of objects/artefacts using interfaces can lead to a huge data volume, processing of which may exceed the available processing capacity and physical limits. Physical limits can be exceeded if the available memory is not sufficient for execution of the operations or storage of the data.

Effective operation of ARIS Risk & Compliance Manager requires a reliable and fast network connection. A network with an insufficient response time reduces system performance and can lead to timeouts.

If ARIS products are used in a virtual environment, sufficient resources must be available to avoid the risk of overbooking.

The system has been tested in the **Internal control system** scenario with 400 users logged in simultaneously. It contains 2,000,000 objects. To guarantee adequate performance, we recommend operating with not more than 500 users logged in simultaneously. Customer-specific adaptations, particularly in lists and filters, have a negative impact on performance.