

# ARIS RISK AND COMPLIANCE CUSTOMIZING GUIDE

VERSION 10.0 - SERVICE RELEASE 22 AND HIGHER  
APRIL 2023

This document applies to ARIS Risk and Compliance Version 10.0 and to all subsequent releases.

Specifications contained herein are subject to change and these changes will be reported in subsequent release notes or new editions.

Copyright © 2010 - 2023 Software AG, Darmstadt, Germany and/or Software AG USA Inc., Reston, VA, USA, and/or its subsidiaries and/or its affiliates and/or their licensors.

The name Software AG and all Software AG product names are either trademarks or registered trademarks of Software AG and/or Software AG USA Inc. and/or its subsidiaries and/or its affiliates and/or their licensors. Other company and product names mentioned herein may be trademarks of their respective owners.

Detailed information on trademarks and patents owned by Software AG and/or its subsidiaries is located at <https://softwareag.com/licenses>.

Use of this software is subject to adherence to Software AG's licensing conditions and terms. These terms are part of the product documentation, located at <https://softwareag.com/licenses> and/or in the root installation directory of the licensed product(s).

This software may include portions of third-party products. For third-party copyright notices, license terms, additional rights or restrictions, please refer to "License Texts, Copyright Notices and Disclaimers of Third Party Products". For certain specific third-party license restrictions, please refer to section E of the Legal Notices available under "License Terms and Conditions for Use of Software AG Products / Copyright and Trademark Notices of Software AG Products". These documents are part of the product documentation, located at <https://softwareag.com/licenses> and/or in the root installation directory of the licensed product(s).

# Contents

Contents.....	1
1 What can be customized?.....	1
2 General procedure.....	2
2.1 Set up of Customizing-Tool-Kit (CTK).....	2
2.2 Adapt the XML configuration.....	2
2.3 Adapt rules.....	3
2.4 Adapt language versions.....	3
2.5 Inheritance.....	4
2.5.1 Inheritance hierarchy of central objects.....	4
2.5.2 Object and VersionObject object types.....	4
2.5.3 TransactionalObject object type.....	5
2.5.4 MonitorableObject object type.....	6
2.5.5 RecurringObject object type.....	8
2.5.6 ObjectContainer object type.....	9
2.5.7 Inheritance in the file objectTypes.xml.....	11
2.6 Conventions.....	14
2.6.1 Conventions in the XML configuration.....	14
2.6.2 Conventions for object generation.....	14
2.6.2.1 Environment association in environment-specific objects.....	14
2.6.2.2 MonitorableObject object type.....	15
2.6.2.3 Identical attribute names.....	16
2.6.2.4 Object assignment if names are identical.....	16
2.7 Class mappings.....	17
2.7.1 Actions.....	17
2.7.2 Command class mappings.....	19
2.7.3 Statistics class mappings.....	19
2.7.4 BI class mappings.....	20
2.7.5 UI class mappings.....	20
2.7.6 View class mappings.....	21
2.7.7 VCREG.XML configuration file.....	21
2.8 Customize help.....	22
3 Basic use cases.....	23
3.1 Customize object properties.....	23
3.1.1 Overwrite the schema version.....	23
3.1.2 Add/adapt a simple attribute.....	24
3.1.2.1 Create a simple attribute.....	24
3.1.2.1.1 Adapt an object type.....	24
3.1.2.1.2 Add/adapt properties.....	24
3.1.2.1.3 Assign validator.....	25
3.1.2.1.4 Assign converter.....	25
3.1.2.2 Add an attribute to a form.....	26
3.1.2.2.1 Adapt a form.....	26
3.1.2.2.2 Add/adapt properties of a form.....	26

3.1.2.2.3	Assign a renderer .....	27
3.1.2.2.4	Adapt rules.....	27
3.1.2.2.5	Add/adapt reports .....	28
3.1.2.3	Add an attribute to a list .....	28
3.1.2.3.1	Adapt a list .....	28
3.1.2.3.2	Add/adapt properties of a list .....	29
3.1.2.3.3	Adapt data retrieval for a list .....	29
3.1.2.3.4	Add a renderer .....	29
3.1.2.3.5	Add/adapt reports .....	30
3.1.2.3.6	Adapt a list filter .....	30
3.1.2.3.7	Add/adapt default values for list filters .....	31
3.1.2.3.8	Add/adapt properties of a filter .....	31
3.1.2.3.9	Assign a renderer .....	31
3.1.3	Add/modify an enumeration attribute .....	32
3.1.3.1	Create an enumeration attribute .....	32
3.1.3.1.1	Add/adapt an enumeration.....	32
3.1.3.1.2	Add/adapt properties of an enumeration.....	33
3.1.3.1.3	Adapt an object type .....	33
3.1.3.1.4	Adapt enumeration restrictions.....	34
3.1.3.1.5	Add an attribute to a form.....	35
3.1.3.1.6	Adapt data retrieval for a list .....	35
3.1.3.1.7	Add an attribute to a list .....	35
3.1.3.1.8	Add an attribute to a filter .....	35
3.1.4	Add/adapt a list attribute .....	36
3.1.4.1	Create a list attribute.....	36
3.1.4.1.1	Adapt an object type .....	36
3.1.4.1.2	Add/adapt properties .....	36
3.1.4.1.3	Adapt list restrictions .....	37
3.1.4.1.4	Adapt roles.....	38
3.1.4.1.5	Add an attribute to a form.....	39
3.1.4.2	Add a selection list .....	40
3.1.4.2.1	Adapt a selection list .....	40
3.1.4.2.2	Add/adapt properties .....	40
3.1.4.2.3	Adapt data query for selection list .....	41
3.1.4.2.4	Assign a renderer .....	41
3.1.4.2.5	Add a selection list filter .....	41
3.2	Customize the object life cycle .....	42
3.2.1	Workflow configuration .....	42
3.2.1.1	Add a state .....	43
3.2.1.1.1	Add a state to an active object .....	43
3.2.1.1.2	Add a state to a deleted object .....	44
3.2.1.2	Add a transition.....	44
3.2.1.2.1	Add a prepare transition .....	45
3.2.1.2.2	Add an insert transition .....	46
3.2.1.2.3	Add an update transition .....	47
3.2.1.2.4	Add a reset transition .....	48
3.2.1.2.5	Add a delete transition .....	49

3.2.1.2.6	Add a recover transition .....	50
3.2.2	Configure the command chain catalog .....	51
3.2.2.1	Modify a command chain .....	51
3.2.2.2	Add a command chain .....	52
3.2.3	Adapt/add user interactions .....	52
3.2.3.1	Confirmation dialogs .....	53
3.2.3.2	Input dialogs .....	54
3.3	Adapt the task configuration .....	57
3.4	Adapt a master data file import .....	60
3.5	Add/adapt hierarchies .....	61
3.5.1	Add an enumeration item .....	61
3.5.2	Add a new list element to a master data object .....	62
3.5.3	Add a new list element to a transactional object .....	63
3.5.4	Display and input options for forms .....	64
3.5.5	Automatic transfer of hierarchy elements .....	64
3.5.6	Make a hierarchy attribute editable. ....	64
3.5.7	Assign roles to a hierarchy attribute .....	65
3.5.8	Add a hierarchy evaluation .....	65
3.5.9	Create a new data view for hierarchy statistics .....	66
3.6	Add/adapt statistics .....	67
3.6.1	Adapt statistics .....	67
3.6.1.1	Adapt column widths .....	67
3.6.1.2	Link structural elements .....	67
3.6.1.3	Add/adapt columns .....	68
3.6.1.3.1	statistic.columnGroup.enum-based statistics .....	68
3.6.1.3.2	statistic.columnGroup.perCent-based statistics .....	69
3.6.1.3.3	statistic.column.value-based statistics .....	70
3.6.1.3.4	Adapt links .....	71
3.6.1.3.5	Use a new hierarchy .....	71
3.7	Add/adapt reports .....	72
3.7.1	Add/adapt reports for forms .....	72
3.7.1.1	Replace an existing form report definition .....	72
3.7.1.2	Add a new form report definition .....	73
3.7.1.3	Incorporate a new form report selection .....	73
3.7.2	Add/adapt reports for lists .....	74
3.7.2.1	Replace an existing list report definition .....	74
3.7.2.2	Add a new list report definition .....	75
3.7.2.3	Incorporate a new report selection .....	75
3.8	Adapt message templates .....	76
3.8.1	Add a new message template .....	76
3.8.2	Add a new message template content .....	76
3.8.3	Customize the content of a message template .....	77
3.8.4	Send messages .....	79
3.9	Add/adapt segregation of duties .....	80
3.10	Add/adapt rule .....	81
3.10.1	Overwrite an existing rule file .....	81

3.10.2	Incorporate a new rule file.....	82
3.10.3	Reuse existing rules for new attributes .....	83
3.11	Add/adapt a scheduled task .....	84
3.11.1	Generator .....	84
3.11.1.1	Adapt the object search.....	84
3.11.1.2	Generate objects.....	85
3.11.2	Adapt the object search.....	86
3.11.3	Updater .....	86
3.12	Adapt offline processing .....	86
3.12.1	Modify offline documents.....	87
3.12.2	Change the offline operator roles definition .....	88
3.12.3	Add a new offline editor role.....	88
3.12.4	Adapt offline processors.....	89
3.12.5	Adapt offline behavior for each object type.....	89
3.13	Add/adapt dashboard data feed .....	90
3.13.1	Adapt dashboard data feed.....	90
3.13.2	Add dashboard data feed .....	91
3.13.2.1	Add a MashZone list for object data.....	91
3.13.2.2	Add a MashZone list for object links.....	92
3.13.2.3	Assign a name to a MashZone list.....	92
3.14	Adjust navigation.....	93
3.14.1	Adapt navigation for an area .....	93
3.15	Adapt and extend event enabling.....	95
3.15.1	Extend existing Digital Event Types.....	95
3.15.2	Create new Digital Event Type .....	96
3.16	Adapt interface appearance.....	96
3.16.1	Include CSS files .....	97
3.16.2	Include JavaScript files.....	98
3.16.3	Exchange images and icons.....	98
4	Migration costs and risks of customizing.....	99
4.1	Costs and effort of customizing migration.....	100
4.2	Risks of customizing .....	100
5	Technical help .....	101
6	Legal information.....	102
6.1	Documentation scope.....	102
6.2	Support .....	102

## 1 What can be customized?

The configuration of ARIS Risk and Compliance is defined in XML files based on commented XML schema files (.xsd). These XML files describe:

- characteristics of objects and attributes as well as their representation in the user interface
- object life cycle and form flow
- hierarchies
- statistics and reports
- roles, privileges, and segregation of duties
- notifications
- scheduled tasks
- offline processing
- dashboard data feeds
- style sheets

The XML configuration refers to:

- Java classes that implement specific behavior
- property files containing the localized text for the user interface
- DRL and DSL files containing the rules for the forms

You can customize the application by adapting the elements in the XML configuration.

For example, you can add an existing attribute type to an existing object type using a new name. Or you can include new elements, such as new messages or Java classes implementing new behavior that you cannot otherwise configure using XML. This does not require an individual build process. Changes to the configuration are applied during server runtime as long as the system is running in development system mode (ACC parameter **arcm.config.isDevelopmentSystem = true**). A server restart is required for productive systems. The section **Basic use cases** (Page 23) describes all steps for adaptations based on the XML configuration.

You can also customize the behavior by integrating individual Java implementations of special interfaces through the XML configuration. These Java classes can be individually developed based on a defined interface and are then included like the default classes without any particular build process being required for ARIS Risk and Compliance.

### **Warning**

Customizing is applied to all tenants of the ARIS installation. It is not possible to use a different customizing for each tenant.

## 2 General procedure

The default implementation is based on configuration mechanisms that are also used for adaptations. If the default behavior or default structure is to be changed selectively, the corresponding passages in the XML configuration can be overwritten so that a changed behavior or a changed or extended structure is defined at this position. These selective changes and extensions are performed in the directory

**\server\bin\work\work\_arcm\_<size s/m/l>\base\webapps\arcm\WEB-INF\config\custom**, which is located in the installation directory.

The chapter on **Basic use cases** (Page 23) describes the steps necessary to create adapted configurations based on the use cases supported. The procedure described is implemented in configuration examples that you can find in the folder **customizing examples**.

The folder **standard configuration** contains the default XML configuration files. You can use these files as a starting point for adaptations and copy the passages to be customized from there and then change them according to your requirements.

### 2.1 Set up of Customizing-Tool-Kit (CTK)

Use the Eclipse-based Customizing Tool Kit (CTK) to customize ARIS Risk and Compliance.

You can download the user guide together with the CTK from the download area of ARIS Risk and Compliance in the Solution Book for partners

(<https://solutionbook.softwareag.com/partner/page/blueprintsolution.xhtml?guid=36768316>).

### 2.2 Adapt the XML configuration

The **xml** folder contains one or more XML files including the customized XML configuration.

The system validates these files against the XML schema file **custom.xsd**. This file is located in the **xsd** folder and must not be changed. The **<custom>** element must be the root element of these XML files.

An XML file must include the **<version>** element with the **application** attribute. The value of the **application** attribute must match the product version of ARIS Risk and Compliance.

Example: **<version application="10.0.10" />**



## 2.3 Adapt rules

The **rules** folder contains adapted rule files that are integrated by the XML configuration. See **Add/adapt rule** (Page 81).

## 2.4 Adapt language versions

The **properties** folder contains one or more property files with customized strings for the user interface. Adhere to these naming conventions:

- The English property file must be stored in a file with the extension **.properties**.
- All other property files must be stored in a file with the extension **\_<language code>.properties**, for example, **\_de.properties** for the German file.
- The underscore (**\_**) must be used before the language code. It must not occur at any other position of the file name.

### Examples

English properties file (without language code):

- Correct file name: **myCustomizedStrings.properties**
- Wrong file name: **my\_customized\_strings.properties**

German properties file (with language code):

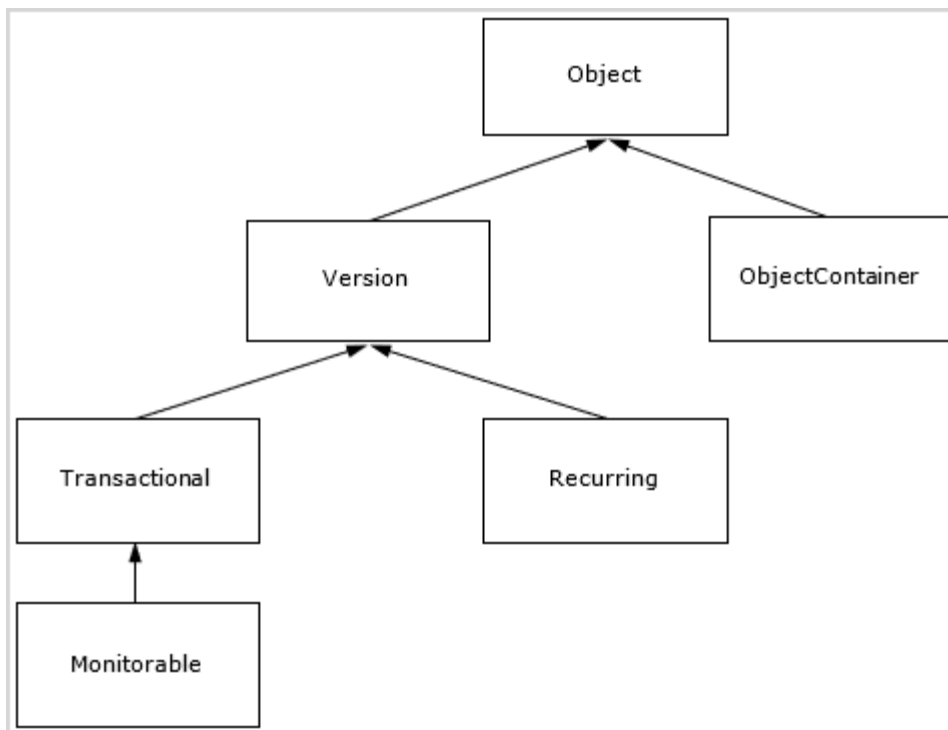
- Correct file name: **myCustomizedStrings\_de.properties**
- Wrong file name: **my\_customized\_strings\_de.properties**

This allows you to create several language versions in parallel, whose file names only differ in terms of the language code.

## 2.5 Inheritance

ARIS Risk and Compliance version 4.0 introduces an inheritance mechanism in object configuration (**objectTypes.xml**). This ensures a uniform structure of objects and attributes of the components, Test Management, Issue Management, and so on, as well as objects with similar meaning and function. The inheritance determines the function of an object type within the component and thus reduces the configuration effort. The configuration effort is reduced due to the centralization and reuse of workflow-relevant attributes. The inheritance feature also simplifies the programming of generic system functions, such as monitoring because it is possible to access centrally configured attributes.

### 2.5.1 Inheritance hierarchy of central objects



### 2.5.2 Object and VersionObject object types

The **Object** and **VersionObject** object types (objectTypes.xml: **OBJECT, VERSION**) contain central technical attributes. These should not be changed during customizing. Object types that are subject to the ARIS Risk and Compliance versioning mechanism need to extend the **VersionObject** object type. Non-versioned object types inherit from **Object** directly. Similar

to the Java programming language, it is not necessary to explicitly specify the extension of the **Object** object type, it is extended automatically.

### 2.5.3 TransactionalObject object type

The **transactionalObject** object type (objectTypes.xml: **TRANSACTIONAL**) combines several attributes that belong to the typical transactional data objects. Usually, these object types (for example, control test) pass through various roles (for example, Tester and Reviewer) during a workflow and represent the basis of the data recorded in ARIS Risk and Compliance.

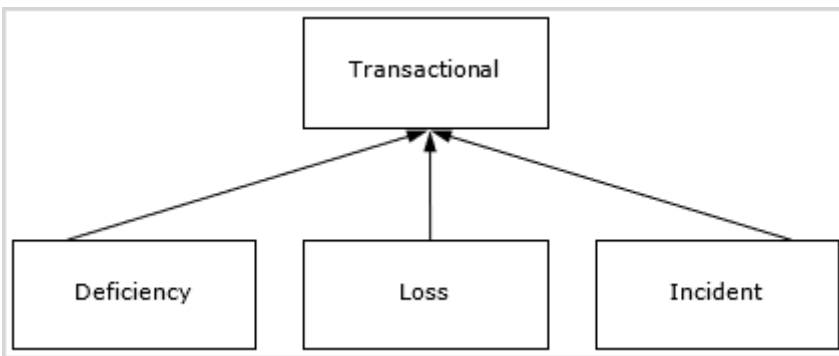
#### ATTRIBUTES

Attribute ID	Data type	Usage
name	String	Name of transaction object
owner_status	Enumeration	Status
owner_remark	Text	Option for owner to describe selected status
owner_group	Assignment	Group responsible for execution
responsible_owner_group	Assignment	Used for handover and delegation
owner	Assignment	Executing user
owner_substitute	Assignment	Substitute of executing user
owner_upload_user	Assignment	Set by file upload for offline processing
owner_upload_role	Enumeration	Set by file upload for offline processing
owner_upload_confirm	Enumeration	Set by file upload for offline processing
execution_date	Date	Execution date
reviewer_status	Enumeration	Status of review
reviewer_remark	Enumeration	Option for reviewer to describe selected status
reviewer_group	Assignment	Group responsible for review
reviewer	Assignment	Reviewer
reviewer_substitute	Assignment	Substitute of reviewer
reviewer_upload_user	Assignment	Set by file upload for offline processing
reviewer_upload_role	Enumeration	Set by file upload for offline processing

Attribute ID	Data type	Usage
reviewer_upload_confirmation	Enumeration	Set by file upload for offline processing
review_date	Date	Review date

If the two status attributes require different enumerations for different workflows, you can overwrite the corresponding attributes of the actual (inheriting) object type. For group assignment attributes, the roles of assignable groups need to be specified at the inheriting object type.

INHERITANCE DIAGRAM



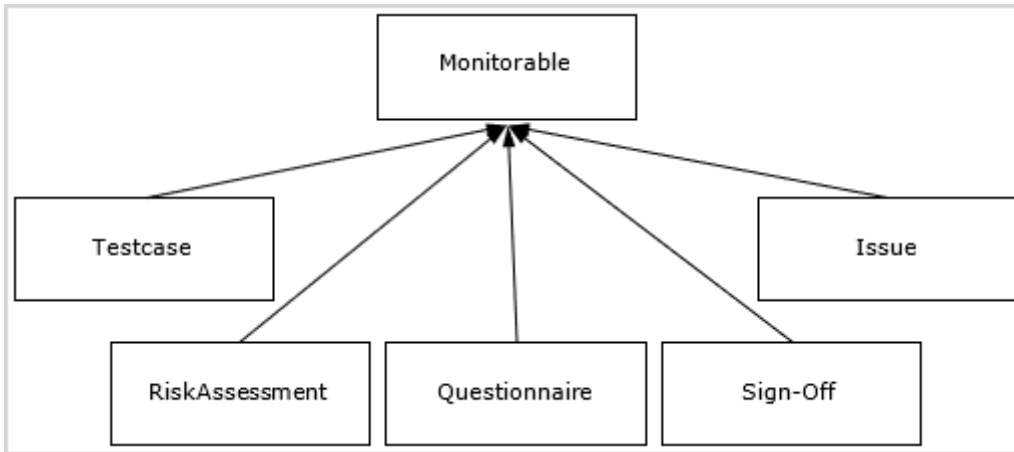
### 2.5.4 MonitorableObject object type

The **monitorableObject** object type (objectTypes.xml: **MONITORABLE**) adds several attributes to the **transactionalObject** object type described previously, which are associated with time-based monitoring. Transactional data types with expiration dates (for example, control test) monitored by the application are supposed to inherit from this object type.

ATTRIBUTES

Attribute ID	Data type	Usage
plannedstartdate	Enumeration	Start date of processing period
plannedenddate	Assignment	End date of processing period
controlstartdate	Assignment	Start date of control period
controlenddate	Assignment	End date of control period

INHERITANCE DIAGRAM



## 2.5.5 RecurringObject object type

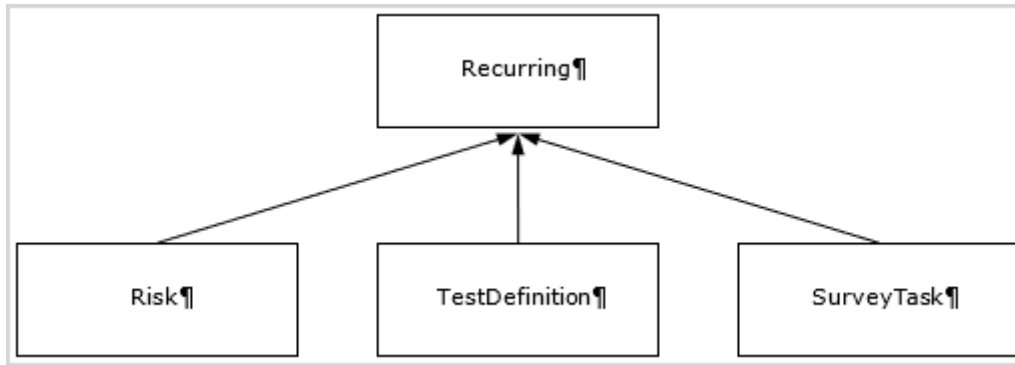
The **RecurringObject** object type (objectTypes.xml: **RECURRING**) is part of the master data. It combines attributes required for the regeneration of transactional data objects.

### ATTRIBUTES

Attribute ID	Data type	Usage
name	String	Name of recurring object
owner_group	Assignment	Group responsible for execution
frequency	Enumeration	Frequency used to generate the transactional data objects (once, daily, weekly, and so on)
duration	Integer (long)	Time limit for execution in days
startdate	Date	Date from which transactional data is generated regularly
enddate	Date	Date up to which transactional data is generated regularly
control_period	Enumeration	Length of the control period (day, week, month, and so on)
control_period_offset	Integer (long)	Offset of the control period in days
reviewer_group	Assignment	Group responsible for review
event_driven_allowed	Boolean	

If the **frequency** and **control\_period** attributes require different enumerations for different workflows, you can overwrite the corresponding attributes of the actual (inheriting) object type. For group assignment attributes, the selection must be restricted to one role at the inheriting object type. For this, you must overwrite this attribute and assign the appropriate restriction to it.

## INHERITANCE DIAGRAM



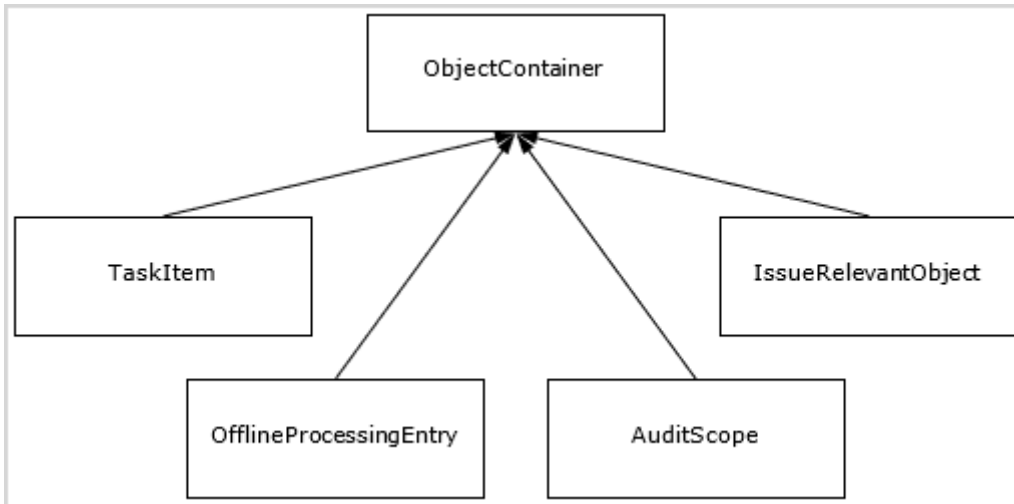
## 2.5.6 ObjectContainer object type

The **objectContainer** object type (objectTypes.xml: **OBJECTCONTAINER**) serves as a container for other objects. It is used in Issue Management, for example, to connect objects of any type as issue-relevant objects.

## ATTRIBUTES

Attribute ID	Data type	Usage
object_id	Integer (long)	ID of the object contained
object_version_number	Integer (long)	Version number of the object contained
object_objtype	String	Object type of the object contained
object_clientSign	String	Auxiliary attribute for the environment filter
object_clientSigns	String	Auxiliary attribute for the environment filter (contains a comma-separated list of assigned environment identifiers)
object_name	String	Name of the object contained
object_ovid	String	Auxiliary attribute for the selection (object version ID)
role	Enumeration	Role used for accessing the object contained

INHERITANCE DIAGRAM





## 2.5.7 Inheritance in the file `objectTypes.xml`

Inheritance is expressed using the XML attribute **extends** at the XML element **objectType** in the file **objectTypes.xml**. The value of the attribute must contain the ID of the superior object.

### BASIC OBJECTS WITH A SPECIFIC MEANING

OBJECT, VERSION, TRANSACTIONAL, RECURRING, MONITORABLE, OBJECTCONTAINER

### INHERITANCE STRUCTURE

INTERNALMESSAGE > OBJECT

CONNECTITEM > OBJECT

DASHBOARDCONNECTION > OBJECT

DOCUMENT > OBJECT

DOCUMENTLINKTYPE > OBJECT

JOBINFORMATION > OBJECT

MESSAGETEMPLATES > OBJECT

QUESTIONNAIRESECTION > OBJECT

UMCUSERGROUP > OBJECT

USER > OBJECT

SUBSCRIPTION > OBJECT

VERSION > OBJECT

USERGROUP > VERSION > OBJECT

CONTROL > VERSION > OBJECT

CLIENT > VERSION > OBJECT

DEFICIENCY > VERSION > OBJECT

EXCEPTION > VERSION > OBJECT

FREQUENCY > VERSION > OBJECT

IMPACTTYPE > VERSION > OBJECT

QUESTION > VERSION > OBJECT

QUESTIONNAIRE\_TEMPLATE > VERSION > OBJECT

QUOTATION > VERSION > OBJECT

RA\_IMPACTTYPE > VERSION > OBJECT

RECOMMENDATION > VERSION > OBJECT

SECTION > VERSION > OBJECT

SITE > VERSION > OBJECT

NEWSMESSAGE > VERSION > OBJECT

OPTION > VERSION > OBJECT

OPTIONSET > VERSION > OBJECT

TRANSACTIONAL > VERSION > OBJECT

ANSWER > TRANSACTIONAL > VERSION > OBJECT

INCIDENT > TRANSACTIONAL > VERSION > OBJECT

LOSS > TRANSACTIONAL > VERSION > OBJECT

AUDIT > MONITORABLE > TRANSACTIONAL > VERSION > OBJECT

AUDITSTEP > MONITORABLE > TRANSACTIONAL > VERSION > OBJECT

CHANGEREVIEW > MONITORABLE > TRANSACTIONAL > VERSION > OBJECT

CONFIRMATION > MONITORABLE > TRANSACTIONAL > VERSION > OBJECT

CONFIRMATIONPROCESS > MONITORABLE > TRANSACTIONAL > VERSION > OBJECT

CONTROLEXECUTION > MONITORABLE > TRANSACTIONAL > VERSION > OBJECT

ISSUE > MONITORABLE > TRANSACTIONAL > VERSION > OBJECT

MONITORABLE > TRANSACTIONAL > VERSION > OBJECT

POLICY > MONITORABLE > TRANSACTIONAL > VERSION > OBJECT

POLICYAPPROVAL > MONITORABLE > TRANSACTIONAL > VERSION > OBJECT

POLICYCONFIRMATION > MONITORABLE > TRANSACTIONAL > VERSION > OBJECT

POLICYREVIEW > MONITORABLE > TRANSACTIONAL > VERSION > OBJECT

QUESTIONNAIRE > MONITORABLE > TRANSACTIONAL > VERSION > OBJECT

RISKASSESSMENT > MONITORABLE > TRANSACTIONAL > VERSION > OBJECT

SOPROCESS > MONITORABLE > TRANSACTIONAL > VERSION > OBJECT

SURVEY > MONITORABLE > TRANSACTIONAL > VERSION > OBJECT

TESTCASE > MONITORABLE > TRANSACTIONAL > VERSION > OBJECT

RECURRING > VERSION > OBJECT

CONFIRMATIONSCHEDULER > RECURRING > VERSION > OBJECT

CONTROLEXECUTIONTASK > RECURRING > VERSION > OBJECT

HIERARCHY > RECURRING > VERSION > OBJECT

POLICYDEFINITION > RECURRING > VERSION > OBJECT

SOTASK > RECURRING > VERSION > OBJECT

SURVEYTASK > RECURRING > VERSION > OBJECT

TESTDEFINITION > RECURRING > VERSION > OBJECT

AUDITSTEPTEMPLATE > RECURRING > VERSION > OBJECT

AUDITTEMPLATE > RECURRING > VERSION > OBJECT

POLICYREVIEWTASK > RECURRING > VERSION > OBJECT

OBJECTCONTAINER > OBJECT

ISSUERELEVANTOBJECT > OBJECTCONTAINER > OBJECT

TASKITEM > OBJECTCONTAINER > OBJECT

AUDITSCOPE > OBJECTCONTAINER > OBJECT

OFFLINEPROCESSINGENTRY > OBJECTCONTAINER > OBJECT

## 2.6 Conventions

### 2.6.1 Conventions in the XML configuration

ARIS Risk and Compliance version 4.0 introduces numerous conventions that reduce the configuration effort. Examples of these conventions are property keys consisting of the object and attribute names, and buttons subject to naming conventions. The keys and file names are determined by the name convention and the corresponding resources are automatically loaded. The function of these conventions is documented in the relevant schema (XSD) for each XML file.

### 2.6.2 Conventions for object generation

Conventions are used for object generation to reduce the customizing effort. A significant example is the automatic transport of attributes from master data to transactional data. For example, the **test activities** attribute (testingsteps) is automatically transported during control test generation from the control test definition to the generated control test via a name convention. When a new attribute to be transported to a transactional data object was introduced in earlier ARIS Risk and Compliance versions, not only the XML configuration, but also the corresponding object generator had to be adapted in the Java source code. From version 4.0, you must assign identical names to the attributes at the source object and target object.

#### 2.6.2.1 Environment association in environment-specific objects

For environment-specific objects, the environment association of the source object is automatically transferred to the target object.

## 2.6.2.2 MonitorableObject object type

During the generation of objects of the **monitorableObject** object type, attributes are transferred by the relevant **recurringObject** and calculated based on the master data attributes, such as start and end date. This requires an appropriate **recurringObject** to exist in the context. The default ARIS Risk and Compliance configuration includes the following relationships between recurring and monitoring objects:

- TESTDEFINITION > TESTCASE
- SURVEYTASK > SURVEY
- SURVEYTASK > QUESTIONNAIRE
- RISK > RISKASSESSMENT

The following table illustrates how the attributes are handled:

Attribute	Handling
plannedstartdate	Is calculated based on the start date ( <b>startdate</b> ) and the frequency ( <b>frequency</b> ) of the source object.
plannedenddate	Is calculated based on the start date of the target object ( <b>plannedstartdate</b> ) and from the duration of the source object ( <b>duration</b> ).
controlenddate	Is calculated based on the start date of the target object ( <b>plannedstartdate</b> ) and from the offset of the source object ( <b>offset</b> ).
controlstartdate	Is calculated based on the end of the control period ( <b>controlenddate</b> ) and the control period ( <b>control_period</b> ) of the source object.
owner_group	Is directly transferred from the source object.
reviewer_group	Is directly transferred from the source object.

### 2.6.2.3 Identical attribute names

Target object attributes having attributes with identical names at one of the source objects are automatically transferred. This does not apply to attributes inherited from one of the basic object types **Object (OBJECT)** or **VersionObject (VERSION)**. It may be necessary to assign identical names to the attributes but to prevent that the values are automatically transferred. To suppress the automatic transfer of values, you can pass a list of attribute names you want to skip to the help class in which the conventions are applied.

### 2.6.2.4 Object assignment if names are identical

Target objects that are transactional data are often linked with source objects as attributes in order to provide additional information to the end user processing the target object for a better understanding of the task at hand. Source objects are linked automatically from ARIS Risk and Compliance version 4.0, provided the name of the attribute at the target object matches the name of the object type of a source object. For example, when a control test is generated, the **risk** attribute is assigned the corresponding risk (**RISK**) that was transferred as a source object.

## 2.7 Class mappings

A class mapping links a specific implementation (class) with a name. These names are used in other parts of the ARIS Risk and Compliance configuration to refer to the required implementation. The name is significantly shorter and catchier than the rather long name of the class. This ensures that the configuration remains plausible. Various class mappings are available in ARIS Risk and Compliance. Their definition, usage, and scope of application are described in the following section.

### 2.7.1 Actions

Action commands are used in the user interface to convert user interaction to business logic commands. In most cases, the default implementation is sufficient. However, in some special cases or in customizing, you must adapt or supplement the behavior. For this, use a class mapping which simplifies customizing. All classes associated with this mapping must contain the **IActionCommand** interface.

The definition of Action command mappings consists of several parts. One part is the definition of ActionCommandIds, which contains a list of all valid commands and their explanation.

```
<commandIds>
<commandId id="create"      description="create new objects" />

<commandId id="delete"     description="delete objects, version objects will
                           be deactivated (see 'reactivate')"/>

<commandId id="duplicate"  description="creates a duplicate out of the
                           selected object"/>

<commandId id="edit"       description="open the selected object for
                           editing"/>

<commandId id="reactivate" description="reactivate deactivated objects" />

<commandId id="save"       description="make changes on objects persistent" />

...

</commandIds>
```

The other parts are:

- **objectTypeCommands**  
Define commands that control one or more objects. They are usually used with forms.
- **listCommands**  
Define commands that control lists, for example, paging, applying a filter.
- **evaluationCommands:**  
Define commands that control evaluations, for example, expanding the tree structure, applying a filter.
- **jobCommands**  
Define commands that take into account the various server task properties and execute the server tasks accordingly.
- **dialogCommands**  
Define commands that control dialogs.

Each of these areas consists of a list of <commandSet> elements. Each set requires a name attribute. This attribute specifies what the following command definitions refer to. For objectTypeCommands, it refers to the unique identifier of the object type, for listCommands, it is the unique identifier of the list.

A special commandSet is "**common**". It includes the default implementation for all object types, lists, and so on, so that only special implementations must be specified individually. For example, if multiple lists use the same implementation, you can enter all lists, separated by commas, as names of the commandSet. A list can occur in several commandSets at the same time.

```
<listCommands>

  <commandSet name="common">
    <actionCommand commandId="applyFilter"
  clsName="BaseApplyFilterCommand" />
    ...
  </commandSet>

  <commandSet name="riskList,controlList">
    <actionCommand commandId="applyFilter"
  clsName="SpecialApplyFilterCommand" />
  </commandSet>

  <commandSet name="riskList">
    <actionCommand commandId="resetFilter"
  clsName="SpecialResetFilterCommand" />
  </commandSet>

</listCommands>
```



## 2.7.2 Command class mappings

### Commands section

Commands are used in the context of workflows to execute the business logic. They are usually very compact and specialized in one task in order to be reusable. You can assign parameters for the respective operation purpose (command chain) to them. There are also several special implementations that were written for a specific purpose and that cannot be or hardly reused. Nevertheless, you can use them as templates for your own commands. Note that commands must implement the  **ICommand**  interface.

## 2.7.3 Statistics class mappings

This class mapping encompasses all classes with alias names that are used in the statistics. For details on using these classes, see chapter **Add/adapt statistics** (Page 67). For details on implementing additional classes, see the relevant section of the Java documentation about the interface to be implemented.

### EVALUATIONACCESSCONTROL SECTION

Access control implementations are required to grant only specific users access to certain statistics. These classes implement the  **IEvaluationAccessControl**  interface.

### STATISTICTREEPROVIDER SECTION

Tree provider implementations are required to generate the hierarchy structures that the statistics are based on (that is, the tree in the first column).

### STATISTICDATAFILTER SECTION

Data filter implementations are used for filtering data for statistics. These classes implement the  **IStatisticDataFilter**  interface.

### STATISTICDATASOURCE SECTION

Data source implementations are used for configuring the data sources of statistics. The default configuration only offers the data sources **view** and **tree**. **view** grants direct access to the ARIS Risk and Compliance database, **tree** allows the usage of the tree provider as the data source. These classes implement the  **IStatisticDataSource**  interface.

### STATISTICCALCULATOR SECTION

Calculator implementations are used for processing the data to be displayed. They convert the technical data provided by data source implementations into data readable by users. These classes implement the  **IStatisticCalculator**  interface.

## STATISTICDATALINKER SECTION

Data linker implementations are used for linking the data to be displayed. For example, you can link to a detailed view of the data as a list or an additional statistic. These classes implement the **IStatisticDataLinking** interface.

### 2.7.4 BI class mappings

#### **PredefinedValueProvider** section

A value provider allows automatic generation of selection options in a dialog based on the user context and additional parameters, if applicable. These selection boxes occur often and their content is similar, but user-defined. Various default implementations cover a lot of cases.

### 2.7.5 UI class mappings

This section provides the mappings that design the user interface.

#### RENDERER SECTION

A renderer generates an HTML fragment to represent an attribute in forms or lists. A renderer must implement the **IRenderer** interface. In addition to the class for HTML representation (attribute **reportClsName**), you can specify a class to adapt the representation in PDF/Excel reports (attribute **clsName**).

#### FILTERRENDERER SECTION

Filter renderers differ from general renderers only with regard to their implementation. Here, some particular cases are considered that concern the representation of filters.

#### COLUMNRENDERER SECTION

Column renderers implement the **IColumnRenderer** interface and are used by the configurable statistics to display data cells.

#### LAYOUTER SECTION

Layouters generate HTML fragments by combining one or more renderers suitable for the relevant **control**. Layouters implement the **ILayouter** interface.

## CONTROLS SECTION

Controls, such as a form or a list, combine the HTML fragments of the layouts and add further elements, such as buttons in order to generate a completely interactive HTML page. A control can consist of several components. A control can refer to another control (attribute **extends**), by overwriting parts of a control or its components. In this case, the components to be changed must be redefined.

```
<control name="statistic"          className="Statistic" >
  <component name="footer"        className=" StatisticFooter" />
  <component name="header"        className=" StatisticHeader" />
  <component name="row"           className=" StatisticDataRow" />
  <component name="toolbar"       className=" StatisticToolbar" />
  <component name="treeNode"     className=" StatisticTreeNode" />
</control>
<control name="scoping" extends="statistic" className="Statistic" >
  <component name="toolbar"       className="ScopingStatisticToolbar" />
</control>
```

### 2.7.6 View class mappings

In order to be able to customize the data of a configured view, you can specify an additional handler class at a **<view>** element using the **viewHandler** attribute. This handler class must implement the **IViewHandler** interface. Then, it is possible within this class to customize the data returned using additional details. This form of customizing is necessary if the additionally required adaptations cannot be configured completely.

### 2.7.7 VCREG.XML configuration file

The configuration file **vcreg.xml** registers the validator and the converter to be used for the attributes of ARIS Risk and Compliance object definitions (see **Assign validator** (Page 25)). In doing so, a name that refers to a fully qualified class name is defined for the validator or for the converter.

Example

```
<validator name="minlength"

className="com.idsscheer.webapps.arcm.bl.models.objectmodel.attribute.vc.validator.MinLengthValidator"
propertyKey="errors.minlength" />
```

In this example, validator **minlength** is defined with its implementation being listed in the **className** attribute. For validators, a property is listed in the **propertyKey** attribute, which is displayed in the user interface if the validation is negative.

## 2.8 Customize help

The help can be extended by creating new HTML pages or customized by creating links to existing pages. In addition, the content of existing pages can be adapted.

<b>Location</b>	Property file in the <b>properties/help</b> folder
<b>Procedure</b>	<ol style="list-style-type: none"> <li>1. Copy the HTML page to be used for the help to <b>WebContent\help\&lt;language code&gt;\embedded</b>. The name of the file must be the same as the corresponding help ID.</li> <li>2. After the page is copied to the Help folder enter the new property key in a new line in the property file stated above.</li> <li>3. Assign the new help ID as a value to this new property key.</li> </ol> <p>A common properties file is available for all languages.</p>
<b>Remark</b>	<p>According to the convention, a help page is automatically expected when a new form, list, or statistics is created. If a help page is not needed at this point, enter the property key defined in the convention without a value assigned in the properties file. If a help page is configured for a form, list, or statistic, a help button must also be configured and vice versa.</p> <p>If you do not want to create a new help page, you can refer to an existing help page. You can create this link as described above by assigning the existing help ID in one of the appropriate property files. Conventions for naming new property keys:</p> <p>Form: ARCM_FORM_<b>[FORM ID]</b>_PAGE_<b>[PAGE ID]</b>.HLP  List: ARCM_LIST_<b>[LIST ID]</b>.HLP  Statistics: ARCM_EVALUATION_<b>[EVALUATION ID]</b>.HLP</p>
<b>Example</b>	<p>Help_AddNewHelpPage</p> <p>Help_AddNewHelpPage\WEB-INF\config\custom\properties\help\custom_helpids.properties: Override help property key</p>

## 3 Basic use cases

### 3.1 Customize object properties

#### 3.1.1 Overwrite the schema version

As soon as you customize object properties, you must overwrite the schema tag from the file **objectTypes.xml** in customizing. This is the only way to ensure that data exports and imports from the customized ARIS Risk and Compliance version can be properly assigned to the relevant version. The customizing of the version also serves as a fixed starting point for future migrations. If you do not overwrite the schema tag, but still make changes to the schema, it will not be possible to start the ARIS Risk and Compliance Server.

##### Procedure

Enter the name of the customer project without blanks in the customizing attribute in the overwritten schema tag. This attribute has the value **standard** if the schema has not been customized.

##### Example

Entry for a customer project called **United Motor Group** on the basis of ARIS Risk and Compliance version 10 Service Release 10:

```
<schema version="10.0.10" customizing="UnitedMotorGroup" />
```

If different customer versions based on a single ARIS Risk and Compliance version are to be supplied, you can indicate this by stating a version number in the project name.

##### Example

Entry for a customer project called **United Motor Group version 1** on the basis of ARIS Risk and Compliance version 10 Service Release 10:

```
<schema version="10.0.10.0" customizing="UnitedMotorGroup_v1" />
```

If changes in the ARIS Risk and Compliance schema are due to a change in the data import from ARIS Architect, you must also adapt the target schema in the relevant mapping file **Aris2arcm-mapping.xml**.

##### Procedure

1. Find the infoHeader tag with the **standard** attribute:  
    `schema_version="10.0.12.0_standard"`
2. Replace "standard" with the name of the customer project.

##### Example

```
schema_version="10.0.12.0_UnitedMotorGroup"
```

## 3.1.2 Add/adapt a simple attribute

### 3.1.2.1 Create a simple attribute

#### 3.1.2.1.1 Adapt an object type

To adapt an object type, copy the original to the customizing file. Then you can change the properties and attributes of the object type.

<b>Location</b>	XML file in the <b>xml</b> folder
<b>Procedure</b>	<ol style="list-style-type: none"> <li>1. Copy the <b>&lt;objectType&gt;</b> element from the default configuration to the customizing file.</li> <li>2. Create new attributes within the <b>&lt;objectType&gt;</b> element. You must set at least the <b>id</b> property. The value must be unique within the object type.</li> </ol>
<b>Documents</b>	objectTypes.xml, objectTypes.xsd
<b>Example</b>	ModifyObject_AddSimpleAttribute \WEB-INF\config\custom\xml\custom.xml: Add Simple Attribute

#### 3.1.2.1.2 Add/adapt properties

Properties are used for the multi-language capability of the application. A separate file is available for each language. These files include the country code as a suffix in their names.

<b>Location</b>	Property file in the <b>properties/application</b> folder
<b>Procedure</b>	Enter the new property key followed by an equal sign and the corresponding translation in a new line. A separate file is available for each language.
<b>Documents</b>	See Customize names.
<b>Example</b>	ModifyObject_AddSimpleAttribute \WEB-INF\config\custom\properties\application\custom.properties: Add Simple Attribute

### 3.1.2.1.3 Assign validator

To ensure that only specific or permitted values are included in the database, you can assign a validator to an attribute.

<b>Location</b>	XML file in the <b>xml</b> folder
<b>Procedure</b>	<ol style="list-style-type: none"><li>1. Add a new <b>&lt;validate&gt;</b> element as a child element of the attribute.</li><li>2. Specify a registered validator as a name.</li></ol>
<b>Documents</b>	vcreg.xml, vcreg.xsd
<b>Example</b>	ModifyObject_AddSimpleAttribute \\WEB-INF\\config\\custom\\xml\\custom.xml: Add Simple Attribute

### 3.1.2.1.4 Assign converter

It may be necessary to assign a converter to the attribute that modifies the data between application and database. Especially the **startdate** and **enddate** converters are often used if two date fields are to describe a time period.

<b>Location</b>	XML file in the <b>xml</b> folder
<b>Procedure</b>	Add a new <b>&lt;convert&gt;</b> element as a child element of the attribute and specify a registered converter as a name.
<b>Documents</b>	vcreg.xml, vcreg.xsd
<b>Example</b>	See <b>Assign validator</b> (Page 25).

## 3.1.2.2 Add an attribute to a form

### 3.1.2.2.1 Adapt a form

For attributes to be displayed and for you to be able to edit them in the user interface, they must be specified in the object type form. As the order of the attributes can be important, it is defined separately from the object type definition.

<b>Location</b>	XML file in the <b>xml</b> folder
<b>Procedure</b>	<ol style="list-style-type: none"> <li>1. Copy the <b>&lt;form&gt;</b> element from the default configuration to the customizing file, and add a new <b>&lt;row&gt;</b> element at the position where the new attribute is to be displayed.</li> <li>2. Create a subnode <b>&lt;element&gt;</b> with the property <b>attribute.idref</b>. You must specify a unique name for the attribute.</li> </ol>
<b>Documents</b>	forms_[module].xml, forms.xsd
<b>Example</b>	ModifyObject_AddSimpleAttribute \WEB-INF\config\custom\xml\custom.xml: Modify Form

### 3.1.2.2.2 Add/adapt properties of a form

See **Add/adapt properties** (Page 40).

<b>Procedure</b>	Define the property <b>PropertyKey</b> of the <b>&lt;row&gt;</b> element.
<b>Remark</b>	With forms, this is an optional step and only necessary if the property key of the first subnode <b>&lt;element&gt;</b> used according to the convention does not provide an appropriate description. If, for example, there is a start date and an end date in one row, you should define a new property key reflecting the name of the relevant period.
<b>Example</b>	ModifyObject_AddSimpleAttribute \WEB-INF\config\custom\properties\application\custom.properties: Modify Form



### 3.1.2.2.3 Assign a renderer

A default representation is defined for all attributes. To change the default representation, you must specify a different class generating this representation, or you must adapt the default representation by means of a default renderer using parameters.

<b>Location</b>	XML file in the <b>xml</b> folder
<b>Procedure</b>	Assign a valid and registered renderer to the <b>template</b> property of <b>&lt;element&gt;</b> .
<b>Documents</b>	uiClassMappings.xml, uiClassMappings.xsd
<b>Example</b>	ModifyObject_AddSimpleAttribute \WEB-INF\config\custom\xml\custom.xml: Assign Renderer

### 3.1.2.2.4 Adapt rules

New attributes are optional, visible, and not editable by default. To change this, you must adapt the rules. Usually, there are already rules that determine whether the attributes are visible and editable. If the conditions of the rule are met, the new attribute can simply be added. If other conditions are required, you must create a new rule.

<b>Location</b>	DRL file in the <b>rules</b> folder.
<b>Procedure</b>	<ol style="list-style-type: none"> <li>1. Copy the default file to customizing.</li> <li>2. Modify rules or add new ones.</li> </ol>
<b>Documents</b>	See chapter <b>Add/adapt rule</b> (Page 81).
<b>Example</b>	ModifyObject_AddSimpleAttribute \WEB-INF\config\custom\rules\usergroup.drl: Modify Form

### 3.1.2.2.5 Add/adapt reports

Normally, reports are automatically generated based on the form definitions. However, you can modify and configure the reports.

<b>Location</b>	XML file in the <b>xml</b> folder
<b>Documents</b>	Chapter <b>Add/adapt reports</b> (Page 72)
<b>Example</b>	ModifyObject_AddSimpleAttribute \WEB-INF\config\custom\xml\custom.xml: Modify Report

### 3.1.2.3 Add an attribute to a list

#### 3.1.2.3.1 Adapt a list

The modification of lists is similar to the modification of forms.

<b>Location</b>	XML file in the <b>xml</b> folder
<b>Procedure</b>	<ol style="list-style-type: none"> <li>1. Add a new <b>&lt;column&gt;</b> element at the relevant position.</li> <li>2. Specify a name unique in the list for the <b>id</b> property. The <b>attribute.idref</b> property must refer to a valid data retrieval column.</li> <li>3. Add a new <b>&lt;listHeader&gt;</b> element. To enable sorting, the <b>column</b> property must point to the corresponding column name.</li> <li>4. Complete the <b>property key</b> and the <b>width</b> property. The value for <b>width</b> is usually specified in relative widths and its sum should not exceed 98%. The remaining 2% are occupied by the buttons at the beginning and end of each row.</li> </ol>
<b>Documents</b>	lists_[module].xml, lists.xsd
<b>Example</b>	ModifyObject_AddSimpleAttribute \WEB-INF\config\custom\xml\custom.xml: Modify List

### 3.1.2.3.2 Add/adapt properties of a list

See **Add/adapt properties** (Page 24).

#### Example

ModifyObject\_AddSimpleAttribute

\WEB-INF\config\custom\properties\application\custom.properties: Modify List

### 3.1.2.3.3 Adapt data retrieval for a list

In the list, a view defined is defined as a data source. This view must be customized for the new attribute to be included.

<b>Location</b>	XML file in the <b>xml</b> folder
<b>Procedure</b>	<ol style="list-style-type: none"> <li>1. Insert a new <b>&lt;viewColumn&gt;</b> element as a child element in the <b>&lt;viewObject&gt;</b> element. The view object defines the object type of the view columns.</li> <li>2. Assign a unique name to the <b>id</b> property. The <b>attributeType</b> property references an attribute of the associated object type. If you do not only want to filter, but also output the column, you must set the <b>isSelectColumn</b> property to <b>true</b>.</li> </ol>
<b>Documents</b>	view_[module].xml, views.xsd
<b>Example</b>	ModifaObject_AddSimpleAttribute \WEB-INF\config\custom\xml\custom.xml: Modify View

### 3.1.2.3.4 Add a renderer

A default representation is defined for all attributes. To change the default representation, you must specify a different class generating this representation, or you must adapt the default representation by means of a default renderer using parameters.

<b>Location</b>	XML file in the <b>xml</b> folder
<b>Procedure</b>	Assign a valid and registered renderer to the <b>template</b> property of <b>&lt;column&gt;</b> .
<b>Documents</b>	uiClassMappings.xml, uiClassMappings.xsd
<b>Example</b>	ModifyObject_AddSimpleAttribute \WEB-INF\config\custom\xml\custom.xml: Assign List Renderer

### 3.1.2.3.5 Add/adapt reports

See **Add/adapt reports** (Page 72). Add an attribute to a filter

### 3.1.2.3.6 Adapt a list filter

All data retrieval columns can be filtered, regardless of whether they exist in the result or not. You can modify and save the filter values for reuse. Two filter views exist. One is the **Save/configure filter** dialog, and the second is the drop-down filter directly above the list. The order of filter attributes depends on the order in the xml configuration.

<b>Location</b>	XML file in the <b>xml</b> folder
<b>Procedure</b>	<ol style="list-style-type: none"> <li>1. Copy the relevant filter to customizing.</li> <li>2. Insert the following elements: <b>&lt;filter.simple&gt;</b>, <b>&lt;filter.range&gt;</b>.</li> <li>3. Set the <b>dataReference.idref</b> property of the <b>&lt;filter.simple&gt;</b> element to the relevant viewColumn. For the <b>&lt;filter.range&gt;</b> element, the <b>dataReference.from.idref</b> property and the <b>dataReference.to.idref</b> have to be set. For detailed information, refer to the XSD file.</li> </ol>
<b>Documents</b>	filters_[module].xml, uiClassMapping.xml, blClassMapping.xml, filter.xsd, uiClassMapping.xsd, blClassMapping.xsd
<b>Example</b>	ModifyObject_AddSimpleAttribute \WEB-INF\config\custom\xml\custom.xml: Modify filter

### 3.1.2.3.7 Add/adapt default values for list filters

Default values for filters are defined in the list configuration. Each list can contain any number of configuration sets. Each configuration set can specify a set of default filter values. You can set default values for simple and range filters that are defined in the filter configuration to which the list refers in the **filter.idref** attribute.

<b>Location</b>	XML file in the <b>xml</b> folder
<b>Procedure</b>	<ol style="list-style-type: none"> <li>1. Add a <b>&lt;configurationSet&gt;</b> element containing the corresponding <b>id</b> and <b>propertyKey</b> to the <b>&lt;configurations&gt;</b> element of the list.</li> <li>2. Add a <b>&lt;filterSet&gt;</b> element to the <b>&lt;configurationSet&gt;</b> element.</li> <li>3. Add <b>&lt;filterValue.simple&gt;</b> and <b>&lt;filterValue.range&gt;</b> elements to the <b>&lt;filterSet&gt;</b> including the reference to an existing filter definition in the filter configuration.</li> <li>4. Set the <b>value</b> attributes of the <b>&lt;filter.simple&gt;</b> elements, as well as the <b>from.value</b> and <b>to.value</b> attributes of the <b>&lt;filter.range&gt;</b> elements. For detailed information, refer to the XSD file.</li> </ol>
<b>Documents</b>	lists_[module].xml, filters_[module].xml, lists.xsd, filters.xsd
<b>Example</b>	ModifyObject_AddSimpleAttribute \WEB-INF\config\custom\xml\custom.xml: Modify list

### 3.1.2.3.8 Add/adapt properties of a filter

See **Add/adapt properties** (Page 24).

#### Example

ModifyObject\_AddSimpleAttribute

\WEB-INF\config\custom\properties\application\custom.properties: Modify filter

### 3.1.2.3.9 Assign a renderer

See **Assign a renderer (form)** (Page 27).

## 3.1.3 Add/modify an enumeration attribute

### 3.1.3.1 Create an enumeration attribute

#### 3.1.3.1.1 Add/adapt an enumeration

For a new enumeration attribute, you can reuse an existing enumeration or create a new one. You are recommended creating a new enumeration. Reusing an existing enumeration when customizing elements can lead to conflicts with other enumeration attributes that refer to this enumeration.

<b>Location</b>	XML file in the <b>xml</b> folder
<b>Procedure</b>	<ol style="list-style-type: none"> <li>1. Insert a new <b>&lt;enum&gt;</b> element.</li> <li>2. Define the required properties <b>id</b> (unique name), <b>isMultiple</b> (single or multiple selection), and <b>type</b> (<b>number</b> or <b>string</b>)</li> <li>3. As child elements, add the elements of the enumeration as an <b>&lt;enumitem&gt;</b> element.</li> <li>4. Assign a unique name (<b>id</b>) and a corresponding value (<b>value</b>) to each <b>&lt;enumitem&gt;</b> element.</li> </ol>
<b>Remark</b>	If <b>number</b> type is selected, the <b>value</b> property of the <b>&lt;enumitem&gt;</b> elements must only contain figures. If the <b>formRelevant</b> property is set to <b>false</b> , you cannot select the value in the form. The same applies to <b>filterRelevant</b> with regard to the selectability in the filter.
<b>Documents</b>	enumerations.xml
<b>Example</b>	ModifyObject_AddEnumerationAttribute \WEB-INF\config\custom\xml\custom.xml: Add/Modify enumeration

### 3.1.3.1.2 Add/adapt properties of an enumeration

See **Add/adapt properties** (Page 24).

<b>Remark</b>	According to the convention, the property key of an enumeration element looks as follows:  enumeration.[Name of enumeration].[Name of element].DBI
<b>Example</b>	ModifyObject_AddEnumerationAttribute  \WEB-INF\config\custom\properties\application\custom.properties: Add/Modify enumeration

### 3.1.3.1.3 Adapt an object type

See **Adapt an object type** (Page 24).

<b>Procedure</b>	In addition to the simple attributes, you must specify the <b>enumeration</b> property. This property specifies the enumeration to be used for the attribute.
<b>Example</b>	ModifyObject_AddEnumerationAttribute  \WEB-INF\config\custom\xml\custom.xml: Add enumeration attribute

### 3.1.3.1.4 Adapt enumeration restrictions

You can restrict the allowed enumeration values that are displayed using the enumeration attribute.

<b>Location</b>	XML file in the <b>xml</b> folder
<b>Procedure</b>	<p>Add a <b>&lt;enumRestriction&gt;</b> element as a new child element. It has no property and is only used to group the <b>&lt;valuesRestriction&gt;</b> child elements. The <b>&lt;valuesRestriction&gt;</b> elements have the following mandatory properties:</p> <ul style="list-style-type: none"> <li>▪ <b>dependent.enumItem.idref</b> Refers to an enumItem on which the allowed enum items depend.</li> <li>▪ <b>allowed.enumItems.idrefs</b> Refers to the allowed enum items of the attribute.</li> </ul> <p>And this optional property:</p> <ul style="list-style-type: none"> <li>▪ <b>dependent.enumAttrType.idref</b> Refers to another enum attribute of the current object. Only specified if the allowed enum items depend on a value of any other enum attribute.</li> </ul>
<b>Remark</b>	This is not supported for enum attributes of <b>multiple selection</b> type. You can specify multiple <b>&lt;valuesRestriction&gt;</b> elements. However, only one element can be used at a time. Only the first restriction that meets the conditions is used. This means that the order of the restrictions is important.
<b>Documents</b>	objectTypes.xsd
<b>Example</b>	<p>ModifyObject_AddEnumRestriction</p> <p>\WEB-INF\config\custom\xml\custom.xml: Add enum restrictions</p>



### 3.1.3.1.5 Add an attribute to a form

See **Add an attribute to a form** (Page 26).

Example

ModifyObject\_AddEnumerationAttribute

\WEB-INF\config\custom\xml\custom.xml: Modify form

ModifyObject\_AddEnumerationAttribute

\WEB-INF\config\custom\rules\usergroup.drl: Modify Form

### 3.1.3.1.6 Adapt data retrieval for a list

See **Adapt data retrieval for a list** (Page 29).

Example

ModifyObject\_AddEnumerationAttribute

\WEB-INF\config\custom\xml\custom.xml: Modify view

### 3.1.3.1.7 Add an attribute to a list

See **Add an attribute to a list** (Page 28).

Example

ModifyObject\_AddEnumerationAttribute

\WEB-INF\config\custom\xml\custom.xml: Modify list

### 3.1.3.1.8 Add an attribute to a filter

See **Add an attribute to a filter** (Page 30).

Example

ModifyObject\_AddEnumerationAttribute

\WEB-INF\config\custom\xml\custom.xml: Modify filter

## 3.1.4 Add/adapt a list attribute

### 3.1.4.1 Create a list attribute

#### 3.1.4.1.1 Adapt an object type

See **Adapt an object type** (Page 24).

<b>Remark</b>	<p>List attributes require additional properties:</p> <ul style="list-style-type: none"> <li>▪ <b>maxSize</b> indicates the maximum number of objects that can be assigned to the attribute. <b>-1</b> means an infinite number of objects.</li> <li>▪ The <b>linkType</b> property requires a unique numeric value.</li> <li>▪ <b>objectType.idref</b> contains the comma-separated names of all object types that can be assigned. Generally, this should be only one object type.</li> <li>▪ The <b>orderType</b> property indicates how assigned objects are to be sorted.</li> </ul>
<b>Documents</b>	objectTypes.xsd
<b>Example</b>	<p>ModifyObject_AddListAttribute                  \WEB-INF\config\custom\xml\custom.xml: Add list attribute</p>

#### 3.1.4.1.2 Add/adapt properties

See **Add/adapt properties** (Page 24).

**Example**

ModifyObject\_AddListAttribute

\WEB-INF\config\custom\properties\application\custom.properties: Add list attribute

### 3.1.4.1.3 Adapt list restrictions

In addition to the object type restriction, there is another option to further restrict the number of objects allowed. This restriction applies to objects whose attributes have specific values.

<b>Location</b>	XML file in the <b>xml</b> folder
<b>Procedure</b>	<p>Add a <b>&lt;listRestriction&gt;</b> element as a new child element. It has no property, but merely serves to group the <b>&lt;attributeRestriction&gt;</b> child elements. They have the following two mandatory properties:</p> <ul style="list-style-type: none"> <li>▪ <b>attribute</b> refers to an attribute of an object type that is permitted for list attributes.</li> <li>▪ <b>value</b> refers to a value that is permitted for the attribute.</li> </ul> <p>Objects with values other than the permitted ones cannot be assigned.</p>
<b>Remark</b>	<p>You should only refer to attributes that no longer change within the life cycle of the object, such as the type of a hierarchy object. <b>&lt;listRestriction&gt;</b> elements of a list attribute are OR-connected. <b>&lt;listRestriction&gt;</b> elements of a list restriction are AND-connected.</p>
<b>Documents</b>	objectTypes.xsd
<b>Example</b>	<p>ModifyObject_AddListAttribute</p> <p>\WEB-INF\config\custom\xml\custom.xml: Add list restrictions</p>

### 3.1.4.1.4 Adapt roles

For list attributes, privileges must be assigned explicitly. These privileges specify which roles are permitted to modify list attributes. You can set the privilege for adding objects to and removing objects from a list attribute individually. By default, no role has the privilege to do this. You must explicitly assign this privilege to all roles.

<b>Location</b>	XML file in the <b>xml</b> folder
<b>Procedure</b>	<ol style="list-style-type: none"> <li>1. Add a new <b>&lt;roles&gt;</b> element.</li> <li>2. Add one or more <b>&lt;role&gt;</b> child elements that you can copy from the default configuration.</li> <li>3. Customize the privileges. The roles need privileges for adding objects to or removing them from the new list attribute.</li> <li>4. Add a new <b>&lt;relation&gt;</b> child element to the <b>&lt;object&gt;</b> element references the matching object type. The <b>right.idref</b> property knows the possible values <b>a</b> (attach), <b>r</b> (remove), and <b>ar</b> (attach/remove). <b>listAttrType.id</b> references the corresponding list attribute.</li> </ol>
<b>Documents</b>	roles.xml, roles.xsd
<b>Example</b>	ModifyObject_AddListAttribute \WEB-INF\config\custom\xml\custom.xml: Modify roles

### 3.1.4.1.5 Add an attribute to a form

See **Add an attribute to a form** (Page 26).

<b>Procedure</b>	<p>There are additional properties you must specify for list attributes. If the list attribute can be edited by the user, a selection list that displays the admissible objects is required.</p> <p>Two options are available. The selection list can be generated automatically or you can manually define a list (see <b>Add a selection list</b> (Page 40)). The second option is relevant if the selection list contains special cases that the automatic lists cannot cover.</p> <p>You can configure the selection list using a <b>&lt;parameter&gt;</b> child element with the name <b>selectionList</b> and specifying the name of the selection list as <b>value</b>. For an automatically generated selection list, the value for <b>value</b> must be <b>AUTO</b>.</p> <p>You can also customize the buttons for managing and manipulating the objects. <b>Open</b>, <b>Edit</b>, <b>Create assignment</b> and <b>Remove assignment</b> are the default buttons. They have the child elements <b>&lt;button.add&gt;</b> and <b>&lt;button.remove&gt;</b>. The <b>button.idref</b> property defines the button to be added or removed. <b>location</b> defines whether the button is to be inserted into the toolbar (<b>toolbar</b>) or displayed individually for each assigned object (<b>row</b>). <b>type</b> defines whether the button is available only if the user can edit the list attribute (<b>writable</b>) or if it is always available (<b>always</b>).</p>
<b>Remark</b>	<p>An automatic selection list includes the environment of the object, the list restriction of the list attribute, and the objects already assigned. The primary column of the selection list contains the attribute specified in the <b>nameAttribute</b> property of the selection object type. The other columns and filters result from the attributes defined in the <b>descriptionAttributes</b> property.</p>
<b>Documents</b>	objectTypes.xsd
<b>Example</b>	<p>ModifyObject_AddListAttribute</p> <p>\WEB-INF\config\custom\xml\custom.xml: Modify form</p>

## 3.1.4.2 Add a selection list

### 3.1.4.2.1 Adapt a selection list

Adding a selection list is similar to creating a normal list. It includes data retrieval, a representation of the list, and a filter definition. To create a selection list from this normal list, you must configure a few properties.

<b>Location</b>	XML file in the <b>xml</b> folder
<b>Procedure</b>	<ol style="list-style-type: none"> <li>1. Create the list and specify the following properties of the <b>&lt;list&gt;</b> element: <ol style="list-style-type: none"> <li>a. <b>listType</b> receives the value <b>selection</b>.</li> <li>b. <b>destDataType.idref</b> receives the object type of the list attribute as value.</li> <li>c. <b>destAttributeType.idref</b> receives the name of the list attribute itself.</li> </ol> </li> </ol>
<b>Documents</b>	lists.xsd
<b>Example</b>	ModifyObject_AddListAttribute \WEB-INF\config\custom\xml\custom.xml: Add selection list

### 3.1.4.2.2 Add/adapt properties

See **Add/adapt properties** (Page 24).

<b>Remark</b>	Omitting the right part in the property file results in no help button being displayed for this element.
<b>Example</b>	ModifyObject_AddListAttribute \WEB-INF\config\custom\properties\help\custom_helpids.properties: Add selection list

### 3.1.4.2.3 Adapt data query for selection list

<b>Location</b>	XML file in the <b>xml</b> folder
<b>Procedure</b>	<ol style="list-style-type: none"> <li>1. Supplement the data query by two <b>&lt;viewCondition&gt;</b> elements in addition to the other conditions.</li> <li>2. Set a condition for the <b>obj_id</b> attribute of the main object type with the compare type <b>NOTIN</b>. <b>currentObjectType.id</b> and <b>currentAttributeType.id</b> again refer to the list attribute and its object types. The second condition filters the <b>client_sign</b> attribute. <b>currentObjectType.id</b> receives the same value as before, <b>currentAttributeType.id</b> receives the value <b>client_sign</b>.</li> </ol>
<b>Documents</b>	views.xsd
<b>Example</b>	ModifyObject_AddListAttribute \WEB-INF\config\custom\xml\custom.xml: Add selection view

### 3.1.4.2.4 Assign a renderer

See **Assign a renderer** (Page 27).

### 3.1.4.2.5 Add a selection list filter

See **Add an attribute to a filter** (Page 30).

<b>Remark</b>	This is the same as adding an attribute a normal filter.
<b>Documents</b>	filters.xsd
<b>Example</b>	ModifyObject_AddListAttribute \WEB-INF\config\custom\xml\custom.xml: Add selection filter

## 3.2 Customize the object life cycle

The object life cycle is mainly controlled or configured by the following configuration files:

- Workflow configuration: XML files (workflow\_\*.xml) in the **xml** folder
- Command chain catalog configuration: XML files (commandChains\_\*.xml) in the **xml** folder
- Rule configuration: DRL files in the **rules** folder (see **Add/adapt rule** (Page 81))
- Generator: Scheduled generation of objects by executing the **<prepare>** and **<insert>** transitions
- Monitor: Scheduled check of processing periods and change of attribute values.

Workflow configuration, rules, and command chains are related as follows:

- The rules define the attribute states (for example, **can be changed**, **visible**) that apply to an object in a particular state. Use the state ID in the rules for this. For details, see **Add/adapt rule** (Page 81).
- The command chains contain the commands that are carried out when a transition is executed.

The following chapters explain the configuration of workflows, command chains, and rules.

### 3.2.1 Workflow configuration

A workflow consists of states and transitions. A state represents the status of an object. This state is defined by the attribute values of an object. Each state must be accessible via at least one transition. A **transition** represents a transition to another state. A command chain must be defined for each transition. This command chain is executed when the transition takes place. A command chain contains any number of commands. Empty chains are also allowed. When adjusting a workflow, you must specify the new and the changed states. You can omit all unchanged states.

The following chapters describe the adding of states and transitions. For details on the configuration of command chains, see **Configuration of the command chain catalog** (Page 51).



### 3.2.1.1 Add a state

A workflow can consist of up to four different state types. The two following state types can only exist once in a workflow:

- A state that represents a new, unedited and unsaved object (**<state.initial>**).
- A state that represents an unsaved object that was edited by a user or by the system (**<state.prepared>**).

These types can occur multiple times in a workflow, but they must have unique IDs:

- A state that represents an active object (**<state>**), or
- a state that represents a deleted object (**<state.deleted>**).

#### 3.2.1.1.1 Add a state to an active object

An object is active if it is persistent and not deleted, that is, a user can edit it in a form, for example.

<b>Location</b>	XML file in the <b>xml</b> folder
<b>Procedure</b>	<ol style="list-style-type: none"> <li>1. Copy a <b>&lt;workflow&gt;</b> element from the default configuration to the customizing file.</li> <li>2. Create one or more new <b>&lt;states&gt;</b> within the <b>&lt;workflow&gt;</b> element. The <b>id</b> attribute must have a value that is unique within the workflow.</li> </ol>
<b>Remark</b>	The state of an object must be uniquely identifiable by the values of the <b>&lt;Attribute&gt;</b> elements, that is, an object is in a particular state if values are defined for it in the <b>&lt;Attribute&gt;</b> elements. The persistent values of an object are used to determine the state. An added state must be accessible by at least one transition. See <b>Add a transition</b> (Page 44).
<b>Documents</b>	workflow_*.xml, workflow.xsd
<b>Example</b>	ModifyObjectLifecycle \WEB-INF\config\custom\xml\testcase_workflow_custom.xml: New custom active workflow state

### 3.2.1.1.2 Add a state to a deleted object

Users can delete or disable an object by clicking **Delete**. If this object is a versioned object, it is removed from the database, but only deactivated. A deactivated object can be reactivated. For details, see **Add a transition** (Page 44) and **Add a recover transition** (Page 49).

<b>Location</b>	XML file in the <b>xml</b> folder
<b>Procedure</b>	<ol style="list-style-type: none"> <li>1. Copy a <b>&lt;workflow&gt;</b> element from the default configuration to the customizing file.</li> <li>2. Create one or more new <b>&lt;state.deleted&gt;</b> within the <b>&lt;workflow&gt;</b> element below the active states. The <b>id</b> attribute must have a value that is unique within the workflow for deleted states.</li> </ol>
<b>Remark</b>	The state of an object must be uniquely identifiable by the values of the <b>&lt;Attribute&gt;</b> elements, that is, an object is in a particular state if values are defined for it in the <b>&lt;Attribute&gt;</b> elements. The persistent values of an object are used to determine the state. An added state.deleted must be accessible by at least one delete transition. See <b>Add a delete transition</b> (Page 48).
<b>Documents</b>	workflow_*.xml, workflow.xsd
<b>Example</b>	ModifyObjectLifecycle \WEB-INF\config\custom\xml\testcase_workflow_custom.xml: New custom deleted workflow state

### 3.2.1.2 Add a transition

Depending on the state of an object, various transitions can be executed. Possible transitions for the active state (**<state>**) include: **update**, **reset** and **delete**. For deactivated states, only a **recover** transition can be executed to exit the state or to return to an active state. The states **initial.state** and **prepare.state** with the two transitions **prepare** and **insert** are available in order to execute various transitions during the creation of an object.

### 3.2.1.2.1 Add a prepare transition

A prepare transition is executed when an object is created by a user or a server task. After this transition was executed, the object is always in the **state.prepared** state.

<b>Location</b>	XML file in the <b>xml</b> folder
<b>Procedure</b>	<ol style="list-style-type: none"> <li>1. Copy a <b>&lt;workflow&gt;</b> element from the default configuration to the customizing file.</li> <li>2. Create a new prepare transition within the <b>&lt;state.initial&gt;</b> element. A prepare element must refer to an existing command chain of the command catalog that belongs to the workflow (<b>commandChains_*.xml</b>) in the <b>chain.id</b> attribute.</li> </ol>
<b>Remark</b>	<p>Prepare transitions can either have a <b>&lt;permission.workflow&gt;</b> or a <b>&lt;permission.job&gt;</b> child element.</p> <ul style="list-style-type: none"> <li>▪ <b>&lt;permission.job&gt;</b> is used to execute a transition by the specified server task only.</li> <li>▪ <b>&lt;permission.workflow&gt;</b> is used to execute a transition by the specified workflow only.</li> </ul>
<b>Documents</b>	workflow.xsd, workflow_*.xml, commandChains_*.xml
<b>Example</b>	<p>ModifyObjectLifecycle</p> <p>\WEB-INF\config\custom\xml\user_workflow_custom.xml: New custom prepare transition</p>

### 3.2.1.2.2 Add an insert transition

An insert transition with the **state.prepared** status is executed when an object is saved for the first time. After the transition was executed, the object must be in a state defined in the workflow.

<b>Location</b>	XML file in the <b>xml</b> folder
<b>Procedure</b>	<ol style="list-style-type: none"> <li>1. Copy a <b>&lt;workflow&gt;</b> element from the default configuration to the customizing file.</li> <li>2. Create a new insert transition within the <b>&lt;state.prepared&gt;</b> element. An insert element must always refer to an active state existing in the workflow in the <b>to.state.id</b> attribute, and to an existing command chain of the command catalog (<b>commandChains_*.xml</b>) associated with the workflow in the <b>chain.id</b> attribute.</li> </ol>
<b>Remark</b>	<p>Insert transitions can either have a <b>&lt;permission.workflow&gt;</b> or a <b>&lt;permission.job&gt;</b> child element.</p> <ul style="list-style-type: none"> <li>▪ <b>&lt;permission.job&gt;</b> is used to execute a transition by the specified server task only.</li> <li>▪ <b>&lt;permission.workflow&gt;</b> is used to execute a transition by the specified workflow only.</li> </ul>
<b>Documents</b>	workflow.xsd, workflow_*.xml, commandChains_*.xml
<b>Example</b>	<p>ModifyObjectLifecycle</p> <p>\WEB-INF\config\custom\xml\user_workflow_custom.xml: New custom insert transition</p>

### 3.2.1.2.3 Add an update transition

An update transition is executed when a user or internal process (for example, server task) saves an object in a form. An object can only be saved if it has a state containing an update transition. The Save function is not enabled for objects in a state without outgoing update transition.

<b>Location</b>	XML file in the <b>xml</b> folder
<b>Procedure</b>	<ol style="list-style-type: none"> <li>1. Copy a <b>&lt;workflow&gt;</b> element from the default configuration to the customizing file.</li> <li>2. Create one or more new update transitions within the <b>&lt;transitions&gt;</b> element. An update element must refer to an active state existing in the workflow in the <b>to.state.id</b> attribute, and to an existing command chain of the command catalog (commandChains_*.xml) associated with the workflow in the <b>chain.id</b> attribute.</li> </ol>
<b>Remark</b>	An update transition added must refer to an existing state ( <b>to.state.id</b> ) and a command chain ( <b>chain.id</b> ).
<b>Documents</b>	workflow.xsd, workflow_*.xml, commandChains_*.xml
<b>Example</b>	<p>ModifyObjectLifecycle</p> <p>\WEB-INF\config\custom\xml\testcase_workflow_custom.xml: New custom update transition</p>

### 3.2.1.2.4 Add a reset transition

A reset transition is executed when a user clicks **Reset** in a form, or if an internal process resets the object. An object can only be reset if it has a state containing a reset transition. The Reset function is not enabled for objects in a state without outgoing update transition.

<b>Location</b>	XML file in the <b>xml</b> folder
<b>Procedure</b>	<ol style="list-style-type: none"> <li>1. Copy a <b>&lt;workflow&gt;</b> element from the default configuration to the customizing file.</li> <li>2. Create one or more new reset transitions within the <b>&lt;transitions&gt;</b> element. A reset element must always refer to an active state existing in the workflow in the <b>to.state.id</b> attribute, and to an existing command chain of the command catalog (commandChains_*.xml) associated with the workflow in the <b>chain.id</b> attribute.</li> </ol>
<b>Remark</b>	A reset transition added must refer to an existing state ( <b>to.state.id</b> ) and a command chain ( <b>chain.id</b> ).
<b>Documents</b>	workflow.xsd, workflow_*.xml, commandChains_*.xml
<b>Example</b>	<p>ModifyObjectLifecycle</p> <p>\WEB-INF\config\custom\xml\testcase_workflow_custom.xml: New custom reset transition</p>

### 3.2.1.2.5 Add a delete transition

A delete transition is executed when a user clicks **Delete** in a form, or if an internal process deletes an object. An object can only be deleted if it has a state containing a delete transition. The Delete function is not available for objects in a state without outgoing delete transition.

<b>Location</b>	XML file in the <b>xml</b> folder
<b>Procedure</b>	<ol style="list-style-type: none"> <li>1. Copy a <b>&lt;workflow&gt;</b> element from the default configuration to the customizing file.</li> <li>2. Create one or more new delete transitions within the <b>&lt;transitions&gt;</b> element. A <b>delete</b> element must always refer to an active state existing in the workflow in the <b>to.state.id</b> attribute, and to an existing command chain of the command catalog (<b>commandChains_*.xml</b>) associated with the workflow in the <b>chain.id</b> attribute.</li> </ol>
<b>Remark</b>	A delete transition added must refer to an existing state ( <b>to.state.id</b> ) and a command chain ( <b>chain.id</b> ).
<b>Documents</b>	workflow.xsd, workflow_*.xml, commandChains_*.xml
<b>Example</b>	<p>ModifyObjectLifecycle</p> <p>\WEB-INF\config\custom\xml\testcase_workflow_custom.xml: New custom delete transition</p>

### 3.2.1.2.6 Add a recover transition

A recover transition is executed when a user clicks **Reactivate** in a form of a deleted or deactivated object, or if an internal process reactivates the object. An object can only be reactivated if it has an inactive state containing a recover transition. Other states cannot have outgoing recover transitions. The Reactivate function is not available for inactive objects without outgoing recover transition.

<b>Location</b>	XML file in the <b>xml</b> folder
<b>Procedure</b>	<ol style="list-style-type: none"> <li>1. Copy a <b>&lt;workflow&gt;</b> element from the default configuration to the customizing file.</li> <li>2. Create one or more delete transitions within the <b>&lt;transitions&gt;</b> element. A recover element must refer to an inactive state existing in the workflow in the <b>to.state.id</b> attribute, and to an existing command chain of the command catalog (<b>commandChains_*.xml</b>) associated with the workflow in the <b>chain.id</b> attribute.</li> </ol>
<b>Remark</b>	A recover transition added must refer to an existing active state ( <b>to.state.id</b> ) and a command chain ( <b>chain.id</b> ).
<b>Documents</b>	workflow.xsd, workflow_*.xml, commandChains_*.xml
<b>Example</b>	<p>ModifyObjectLifecycle</p> <p>\WEB-INF\config\custom\xml\testcase_workflow_custom.xml: New custom recover transition</p>



## 3.2.2 Configure the command chain catalog

The command chains (hereinafter referred to as "chains" ) that can be executed by a specific workflow are grouped in a command chain catalog (hereinafter referred to as "catalog"). The catalog associated with the workflow has the same ID as the workflow itself. You can add new chains to a catalog. A chain does not need to be used by a transition. Deleting unused chains is not necessary. The contents of a chain can be modified, that is, you can add or remove commands. When adjusting a catalog, you must specify the new and the changed chains. You can omit all unchanged chains.

### 3.2.2.1 Modify a command chain

If you want to execute additional actions such as sending messages, changing data, when a transition is run, you must add commands to an existing chain.

<b>Location</b>	XML file in the <b>xml</b> folder
<b>Procedure</b>	<ol style="list-style-type: none"> <li>1. Copy a <b>&lt;catalog&gt;</b> element from the default configuration to the customizing file.</li> <li>2. Adapt one or more command chains within the <b>&lt;catalog&gt;</b> element by extending the chain with a command element or removing a command element. Each command element has an ID representing a command implementation. These IDs are located in the file <b>commandClassMapping.xml</b>. Detailed information on the use and parameterization of the commands is provided in the Java doc of the relevant command.</li> </ol>
<b>Remark</b>	<p>It is possible that the target state of a transition is no longer valid from the perspective of the workflow configuration after a chain was changed.</p> <p><b>Example</b></p> <p>If a transition ends in a state that is defined by the value <b>X</b> of the attribute <b>A</b>, but a command sets the value of attribute <b>A</b> to <b>Y</b>, the target state is invalid or not achieved. In this case, the transition execution is undone and an error message is displayed.</p>
<b>Documents</b>	commandChains.xsd, commandChains_*.xml
<b>Example</b>	ModifyObjectLifecycle \WEB-INF\config\custom\xml\testcase_catalog_custom.xml: Change command chain

### 3.2.2.2 Add a command chain

If a workflow is extended by a new transition and no chain to be used exists, you must add a new chain to the catalog.

<b>Location</b>	XML file in the <b>xml</b> folder
<b>Procedure</b>	<ol style="list-style-type: none"> <li>1. Copy a <b>&lt;catalog&gt;</b> element from the default configuration to the customizing file.</li> <li>2. Adapt one or more command chains within the <b>&lt;catalog&gt;</b> element.</li> <li>3. Add any number of command elements to the new chain. A chain can also be empty, that is, it does not contain a command element. Each command element has an ID representing a command implementation. These IDs are located in the file <b>commandClassMapping.xml</b>. Detailed information on the use and parameterization of the commands is provided in the Java doc of the relevant command.</li> </ol>
<b>Remark</b>	<p>After a chain was modified, the target state of a transition may no longer be valid from the perspective of the workflow configuration.</p> <p><b>Example</b></p> <p>If a transition ends in a state that is defined by the value <b>X</b> of the attribute <b>A</b>, but a command sets the value of attribute <b>A</b> to <b>Y</b>, the target state is invalid or not achieved. In this case, the transition execution is undone and an error message is displayed.</p>
<b>Documents</b>	commandChains.xsd, commandChains_*.xml
<b>Example</b>	ModifyObjectLifecycle \WEB-INF\config\custom\xml\testcase_catalog_custom.xml: Add custom command chain

### 3.2.3 Adapt/add user interactions

To work off a command chain it is sometimes necessary to collect additional information from the user. To do so you can configure your own dialogs and have them called up by a command from the chain. The execution of the chain is interrupted at this point and an input mask is displayed. If the mask is filled in correctly the command chain starts again. This time however, it is extended by the input from the user. Generally, there are currently two types of dialog. The simple dialogs only require a simple confirmation or decision, the more complex dialogs have one or more text boxes.

### 3.2.3.1 Confirmation dialogs

There are two different confirmation dialogs. The simplest dialog has the **okCancel** ID which, in addition to a question or a note, provides the two buttons **Ok** and **Cancel**. **Cancel** stops the execution of the complete command chain. With **Ok** the execution of the chain continues. The dialog with the **yesNoCancel** ID provides an additional button. In addition to the familiar **Cancel** it also provides the possibility to use **Yes** and **No** which both allow the execution of the command chain to be continued, but allow you to go two different ways in the subsequent commands of the chain, for example, in one case you can send a message and in the other you cannot.

In general, you can use several dialogs in a command chain however, all dialogs in a chain must have unique IDs. Information about how new dialogs are defined, for example, confirmation dialogs, in the event that you need several of them in a chain, can be found in the following.

<b>Location</b>	XML file in the <b>xml</b> folder
<b>Procedure</b>	<ol style="list-style-type: none"> <li>1. Extend the relevant command chain with an additional <code>&lt;command&gt;</code> element at the relevant point.</li> <li>2. Use the <b>requestDialog</b> ID.</li> <li>3. Add two subordinate <code>&lt;parameter&gt;</code> elements.</li> <li>4. The first element has the name attribute with the value <b>dialogID</b> and the value attribute with one of the two values <b>okcancel</b> or <b>yesnocancel</b>.</li> <li>5. The second element has the name attribute with the value <b>propertyKey</b> and the value attribute receives the property key that represents the question asked by the user as a value.</li> </ol>
<b>Remark</b>	If you defined your own dialog, use its ID.
<b>Documents</b>	commandChains.xsd, commandChains_*.xml
<b>Example</b>	ModifyObjectLifecycle \WEB-INF\config\custom\xml\testcase_catalog_custom.xml: Add custom dialog

### 3.2.3.2 Input dialogs

If more than one simple confirmation is required, input dialogs are used. This allows you to provide the user with one or more text boxes to fill out.

An attribute is defined for each text box. Similar to the object definitions (**objectTypes.xml**), there are several attribute types available for the individual requirements of the text boxes. You can add validators (**<validator>**) to these attributes, for example, to limit the scope of the attribute by restricting the number of characters or figures that can be entered in a text box. The names of the XML elements result from the name of the attribute type, that is, **<booleanAttribute>**, **<longAttribute>**. You should use naming conventions for the IDs of the attributes, thus facilitating working with the collected data of the dialog. That means, when you transfer an attribute from a dialog to an object, both attributes should have the same name. For example, when create an object, the attribute of the environment selection in the **client\_sign** dialog should have the same name as the corresponding attribute of the object to be created.

#### EXISTING ATTRIBUTE TYPES

<b>boolean</b>	Attribute for Boolean values ( <b>Yes/No</b> ).
<b>date</b>	Attribute for date values.
<b>double</b>	Attribute for floating point numbers.
<b>enum</b>	Attribute for enumerations ( <b>enumerations_*.xml</b> ).
<b>long</b>	Attribute for integers.
<b>selection</b>	Attribute for selecting values from a predefined dynamic list, for example, when selecting an environment. <b>PredefinedValueProvider</b> is available to define the possible values of the selection list. The application contains some of these configurable providers (see below). But you can also implement some providers manually.
<b>string</b>	Attribute for simple text boxes. Content and length of the text can be limited.
<b>text</b>	Attribute for texts consisting of several rows.

There are several **PredefinedValueProviders** for the **selection** attribute. They can be parameterized and provide different possibilities.

EXISTING PREDEFINEDVALUEPROVIDERS

<p><b>client</b></p>	<p>Provides a list of all environments that the user has access to. This list can be limited by a maximum of one of the following parameters:</p> <ul style="list-style-type: none"> <li>▪ <b>componentRight</b> Only outputs environments for which a specific <b>componentRight</b> exists (<b>roles.xml</b>).</li> <li>▪ <b>objectRight</b> Only outputs environments for which a specific <b>objectRight</b> (<b>roles.xml</b>) exists for the current <b>ObjectType</b> (defined by the <b>objectTypeId</b> parameter).</li> <li>▪ <b>licensedComponent</b> Only outputs environments that have a specific licensed component.</li> </ul> <p>Additional parameters:</p> <ul style="list-style-type: none"> <li>▪ <b>objectTypeId</b> ID of an object type (<b>objecttypes.xml</b>) that for example, is set by the <b>createObjectDialog</b> command. This parameter is only required in connection with the <b>objectRight</b> parameter.</li> </ul>
<p><b>static</b></p>	<p>Manages a list of elements defined previously in Java code.</p>
<p><b>usergroup</b></p>	<p>Outputs a list with available user groups.</p> <p>Parameter:</p> <ul style="list-style-type: none"> <li>▪ <b>client_sign</b> Determines which environments the groups should be limited to if <b>clientDependent=true</b>. This parameter can also be defined dynamically by another attribute of the dialog (see the <b>loss_create</b> dialog).</li> <li>▪ <b>roles</b> A comma-separated list of role names (<b>roles.xml</b>). Only groups with the corresponding roles are considered.</li> <li>▪ <b>clientDependent</b> Determines whether environment-specific (<b>true</b>) or cross-environment (<b>false</b>) groups are searched for (Default <b>false</b>).</li> </ul>
<p><b>view</b></p>	<p>Uses a view (<b>views_*.xml</b>) to create a list with elements. The parameters <b>value</b>, <b>id</b> and <b>client</b> require the IDs of the corresponding columns in the view as values.</p>

In the following example a new dialog is created, which is displayed when creating a new control. Some attributes of the control are queried and then set in the newly created control.

<b>Location</b>	XML file in the xml folder
<b>Procedure</b>	<ol style="list-style-type: none"> <li>1. Define a new <b>&lt;dialog&gt;</b> element with a unique ID.</li> <li>2. Add an appropriate subordinate attribute element to each attribute in the dialog. See the text above for possible attribute types.</li> <li>3. Assign an ID to each attribute type. If the input values should be transferred directly to the attribute of an object, they should both have the same ID, for example, <b>client_sign</b> (see also <b>objectTypes.xml</b>). Every dialog and each of its attributes result in the corresponding property keys <b>dialog.&lt;dialogID&gt;.DBI</b>, <b>attribute.&lt;dialogID&gt;.&lt;attributeID&gt;.DBI</b>.</li> <li>4. Create a new <b>&lt;form&gt;</b> element. The ID of the form is inherited from the dialog ID <b>DIALOG_&lt;dialogID&gt;</b>. Currently such forms consist of exactly one <b>&lt;page&gt;</b> element with a single <b>&lt;rowGroup&gt;</b> element.</li> <li>5. For each attribute, add a <b>&lt;row&gt;</b> element with an <b>&lt;element&gt;</b> element to the <b>rowGroup</b>. The XML attribute <b>id (row)</b> and <b>attribute.idref (element)</b> refer to the corresponding ID of the dialog attribute.</li> <li>6. Adapt the corresponding <b>commandchain</b> of the object (see previous chapter).</li> </ol>
<b>Documents</b>	dialogs.xsd, forms.xsd, dialogs.xml, forms_*.xml
<b>Example</b>	AddNewInputDialog \WEB-INF\config\custom\xml\custom.xml: Add custom dialog

### 3.3 Adapt the task configuration

In ARIS Risk and Compliance, transactional objects are accompanied by tasks during their workflow. A task contains the information about which users or user groups are responsible for processing the transactional object. After logging into ARIS Risk and Compliance, users can view their task list under **Home > My tasks**.

The users for processing a task can be specified as follows:

- **One or more directly assigned users**

A list attribute is specified for the transactional object, in which users are directly assigned. By default, tasks for issues are configured in this way.

- **A directly assigned user group**

A list attribute is specified for the transactional object, in which a user group is assigned. The members of this user group are responsible for processing the task. By default, this is the most frequently used configuration. It can be used for configuring the tasks for all transactional objects apart from issues.

- **All environment-specific groups**

A role with the role level **Environment-specific** is specified for the transactional object. The members of the user groups assigned to the role are responsible for processing the task. The transactional object and the user groups must be assigned to the same environment.

If no user group is assigned to the role or no users are assigned to the user group, or if the transactional object is not assigned to any environment, no user is responsible for the task. By default, tasks for deficiencies are configured in this way.

- **All cross-environment groups**

A role with the role level **Cross-environment** is specified for the transactional object. The members of the user groups assigned to the role are responsible for processing the task. If no user group is assigned to the role or no users are assigned to the user group, no user is responsible for the task. By default, this configuration is not used.

Tasks are linked to specific workflow statuses, which determine the subsequent procedure.

This set represents the scope of the task and is divided into three statuses per task:

- Task status **Open**

If a transactional object reaches one of the referenced workflow statuses, a new task is started.

- Task status **Completed**

If a transactional object reaches one of the referenced workflow statuses, all tasks in the configuration of that transactional object are classed as completed.

- Task status **Not completed**

If a transactional object reaches one of the referenced workflow statuses, all tasks in the configuration of that transactional object are classed as not completed.

The scope of different task configurations can overlap without causing problems. Thus, for a transactional object with a particular workflow status, there can be several tasks with various responsibilities.

A monitor strategy can be specified for each task. If it is not specified, the task has no due date for the user and retains the status **Open** in the system until, as a result of interaction by the user, the associated transactional object reaches the workflow status referenced by the task status **Completed** or **Not completed**. For example, in the default configuration this is the case for many reviewer tasks.

A monitor strategy specifies the processing and control period for the task. If these periods are not specified, the processing and control period for the transactional object are used. In the default configuration, this is almost always the case if a monitor strategy is specified. One exception is policy roll-outs, in which the processing period for the task is specified by the **plannedstartdate** and **plannedenddate** attributes, and the control period by the **controlstartdate** and **controlenddate** date attributes.

In the default configuration, this is almost always the case if a monitor strategy is specified. One exception is policy roll-outs, where the processing period for the task is specified by the **publishingstartdate** and **publishingenddate** date attributes.

All tasks with a monitor strategy are monitored by the monitoring server task. The strategy contains monitor levels, which specify what actions the monitoring server task should trigger in terms of the task. A monitor level also contains a specified time that determines when the level is classed as reached. This relates to the processing period of the task. The following settings are possible:

- **Percentage**

The monitor level is reached if, at the execution time of the monitoring server task, the elapsed processing period has reached or exceeded the specified percentage. The value must be a number between 0 and 100.

**Example:** Monitor level with **Percentage** value **50** and processing period 11/1 to 11/30. Monitor level is reached on 11/16.

- **RemainingTime**



The monitor level is reached if, at the execution time of the monitoring server task, the remaining time until the end of the processing period is less than or equal to the specified value. The value must be specified using a positive number followed by a letter to represent the time unit. The possible units are **d** (days) or **h** (hours).

**Example:** Monitor level with **RemainingTime** value **3d** and processing period 11/1 to 11/30. Monitor level is reached on 11/28.

When a task reaches a monitor level, the monitoring server task sends the corresponding message. If no monitor messages are configured, the standard template **monitorjob** is used to send a notification to the user responsible for the task. In the default configuration, this is the case for almost all monitor levels. Alternatively, custom messages can be defined for monitor levels.

Recipients, CC recipients, the message template and the link to a list in ARIS Risk and Compliance can be specified. For a monitor level of **Percentage** type with the value **100**, monitor changes can be defined additionally to messages. Monitor changes use the monitoring server task to change values of the transactional object for the task. This can change the object to another workflow status and cause tasks to be created or closed. An example of this in the default configuration is the task configuration for **tester**. The task configuration for **issue\_owner** is a further example in which an attribute value is changed but this does not have an effect on existing tasks.

If tasks are enhanced by custom attributes, the sources of the inserted values are specified by the **<copyValue>** XML element. The **fromAttribute.idref** attribute and the **toAttribute.idref** attribute of this XML element connect an attribute of the transactional object to an attribute of the generated task. Once the task is generated, the value from **fromAttribute.idref** attribute is copied to **toAttribute.idref** attribute. Both references must link to attributes of the same type. Exceptions: List attributes must link to text attributes. Enumeration attributes are not supported.

<b>Location</b>	XML file in the <b>xml</b> folder
<b>Procedure</b>	Add a new <b>&lt;task&gt;</b> element at the relevant position. The combination of the <b>id</b> and <b>objectType.idref</b> properties must be unique in the entire configuration. The <b>role.idref</b> property is optional and is only used to display items in the task list. If specified, its value must correspond to the ID of a defined role.
<b>Documents</b>	taskconfiguration_auditmanagement.xml taskconfiguration_changemanagement.xml taskconfiguration_deficiencymanagement.xml taskconfiguration_issuemanagement.xml taskconfiguration_lossmanagement.xml

	<p>taskconfiguration_policymanagement.xml</p> <p>taskconfiguration_riskmanagement.xml</p> <p>taskconfiguration_signoffmanagement.xml</p> <p>taskconfiguration_surveymanagement.xml</p> <p>taskconfiguration_testmanagement.xml</p>
<b>Example</b>	<p>TaskConfiguration_ModifyLevels\WEB-INF\config\custom\xml\custom.xml:</p> <p>Task with ID <b>tester</b></p> <p>TaskConfiguration_AddNewColumns\WEB-INF\config\custom\xml\custom.xml:</p> <p>...</p> <p>All declared tasks</p>

### 3.4 Adapt a master data file import

To assign an attribute from ARIS Architect to an attribute in ARIS Risk and Compliance, you must adapt the mapping file for the ARIS Architect export report accordingly. An attribute mapping always consists of the name in ARIS Risk and Compliance, the attribute type from ARIS Risk and Compliance (see objectTypes.xml), and the attribute type from ARIS Architect. This attribute type can name a direct attribute type from ARIS Architect or be a special key word. Customizing offers the following options:

- **<ABA constant name>**: Constant of a default attribute from the ARIS Method, for example, AT\_NAME.
- **<ABA attribute GUID>**: If the attribute is not a default attribute from ARIS Architect, you can use this GUID.
- **FALSE**: Equivalent to CONSTANT#false
- **TRUE**: Equivalent to CONSTANT#true
- **DATE\_NOW**: Returns the execution time of the report as a value.
- **ISMULTIPLE**: Used for exporting multiEnum attributes. All attributes listed in the respective Enum mapping are searched. The values are read and returned as comma-separated values.
- **CONSTANT#<Constant value>**: Returns the specified constant value.

For a later execution of the export report, you must ensure that the added ARIS Architect attributes are included in the current ARIS Architect filter, otherwise their values cannot be extracted.

<b>Location</b>	XML file <b>aris2arcm_mapping.xml</b> in ARIS Architect
<b>Documents</b>	aris2arcm_mapping.xml
<b>Example</b>	<ul style="list-style-type: none"> <li>▪ ModifyMapping_ABA\WEB-INF\config\custom\xml\custom_mapping_string.xml: Add string attribute</li> <li>▪ ModifyMapping_ABA\WEB-INF\config\custom\xml\custom_mapping_constant.xml: Add constant number attribute</li> <li>▪ ModifyMapping_ABA\WEB-INF\config\custom\xml\custom_mapping_single_enum.xml: Add single enum attribute</li> <li>▪ ModifyMapping_ABA\WEB-INF\config\custom\xml\custom_mapping_multi_enum.xml: Add multi enum attribute</li> <li>▪ ModifyMapping_ABA\WEB-INF\config\custom\xml\custom_mapping_list_attribute.xml: Add list attribute</li> </ul>

### 3.5 Add/adapt hierarchies

The following section describes how you add a new hierarchy type and add a simple evaluation using the new hierarchy.

#### 3.5.1 Add an enumeration item

A new hierarchy is added in ARIS Risk and Compliance. A new name is assigned to the hierarchy in the properties. Since the initial root element of the hierarchy is generated in the database only when an environment is generated, you must create a new environment in order to view the change.

<b>Location</b>	XML file in the <b>xml</b> folder
<b>Procedure</b>	Add a new <b>&lt;enumitem&gt;</b> element at the relevant position. The <b>id</b> property contains a unique name for the hierarchy, while the <b>value</b> property contains a unique numerical identifier that is transferred to the database.
<b>Documents</b>	enumerations.xml, enumerations.xsd
<b>Example</b>	AddHierarchy \WEB-INF\config\custom\xml\custom.xml: Step 1

<b>Location</b>	Property file in the <b>properties</b> folder
<b>Procedure</b>	Add a new property at the relevant position and assign a hierarchy name to it.
<b>Example</b>	AddHierarchy \WEB-INF\config\custom\properties\application\custom.properties

### 3.5.2 Add a new list element to a master data object

To enable evaluation of the hierarchy in the application, the hierarchy must be assigned to an ARIS Risk and Compliance element that has a logical relationship to this new hierarchy. Chapter **Add/adapt a simple attribute** (Page 24) describes how to add new elements.

<b>Location</b>	XML file in the <b>xml</b> folder
<b>Procedure</b>	<ol style="list-style-type: none"> <li>1. Add a new <b>&lt;listAttrType&gt;</b> element at the relevant position.</li> <li>2. In the new listAttrType, insert a <b>&lt;listRestriction&gt;</b> element containing an internal <b>&lt;attributeRestriction&gt;</b> element.</li> <li>3. You must restrict the hierarchy type to be added to the new attribute.</li> </ol>
<b>Documents</b>	objectTypes.xml, objectTypes.xsd
<b>Example</b>	AddHierarchy \WEB-INF\config\custom\xml\custom.xml: Step 2

<b>Location</b>	Property file in the <b>properties</b> folder
<b>Procedure</b>	Add a new property at the relevant position and assign the name of the new list attribute to it.
<b>Example</b>	AddHierarchy \WEB-INF\config\custom\properties\application\custom.properties

### 3.5.3 Add a new list element to a transactional object

The relationship to the new hierarchy is now to be transferred to the transactional object that object owners are using and whose status can be evaluated using the hierarchy. Chapter **Add/adapt a simple attribute** (Page 24) describes how to add new list elements.

<b>Location</b>	XML file in the <b>xml</b> folder
<b>Procedure</b>	<ol style="list-style-type: none"> <li>1. Add a new <b>&lt;listAttrType&gt;</b> element at the relevant position.</li> <li>2. In the new listAttrType, insert a <b>&lt;listRestriction&gt;</b> element containing an internal <b>&lt;attributeRestriction&gt;</b> element.</li> <li>3. Restrict the hierarchy type to be added to the new attribute.</li> </ol>
<b>Documents</b>	objectTypes.xml, objectTypes.xsd
<b>Example</b>	AddHierarchy \WEB-INF\config\custom\xml\custom.xml: Step 3

<b>Location</b>	Property file in the <b>properties</b> folder
<b>Procedure</b>	Add a new property at the relevant position and assign the name of the new list attribute to it.
<b>Example</b>	AddHierarchy \WEB-INF\config\custom\properties\application\custom.properties

### 3.5.4 Display and input options for forms

You can import the data of the new hierarchy from ARIS Architect because the structure is usually specified there. However, the example shows how to manually create an input option as the master data object. Chapter **Add an attribute to a form** (Page 26) describes how to add new list elements to forms.

<b>Location</b>	XML file in the <b>xml</b> folder
<b>Procedure</b>	<ol style="list-style-type: none"> <li>1. Add a new <b>&lt;row&gt;</b> element at the relevant position.</li> <li>2. In the new row, insert an <b>&lt;element&gt;</b> element containing the internal <b>&lt;parameter&gt;</b> element.</li> <li>3. Set the selection list to <b>AUTO</b>. This enables you to select a new hierarchy element without having to create an additional selection list.</li> </ol>
<b>Documents</b>	forms_testmanagement.xml, forms.xsd
<b>Example</b>	AddHierarchy \WEB-INF\config\custom\xml\custom.xml: Step 4 and Step 5

You can also display this new attribute in lists. See **Add an attribute to a list** (Page 28).

### 3.5.5 Automatic transfer of hierarchy elements

If the attribute names comply with the conventions, meaning they are identical for master data object and transactional object, the generator automatically transfers the hierarchy element (in the example: during control test generation). The conventions are described in the section **Conventions for object generation** (Page 14).

### 3.5.6 Make a hierarchy attribute editable.

Section **Add/adapt rule** (Page 81) describes how to edit rules.

<b>Location</b>	DRL file in the <b>rules</b> folder.
<b>Procedure</b>	Enable editing the attribute in the master data object in the rule <b>Define all standard attributes as editable</b> .
<b>Documents</b>	risk.drl
<b>Example</b>	AddHierarchy \WEB-INF\config\custom\rules\risk.drl: Enable editing of a hierarchy attribute in rules

### 3.5.7 Assign roles to a hierarchy attribute

You can add a hierarchy element to a role or remove it. Section **Adapt roles (assign/remove)** (Page 37) describes how to edit roles.

<b>Location</b>	XML file in the <b>xml</b> folder
<b>Procedure</b>	In the <b>&lt;relation&gt;</b> element, connect the list attribute to an <b>Assign and/or Remove</b> privilege.
<b>Documents</b>	roles.xsd
<b>Example</b>	AddHierarchy \\WEB-INF\\config\\custom\\xml\\custom.xml: Step 6

### 3.5.8 Add a hierarchy evaluation

<b>Location</b>	XML file in the <b>xml</b> folder
<b>Procedure</b>	Add a new <b>&lt;nav.evaluation&gt;</b> element and connect it to the existing statistics definition.
<b>Documents</b>	navigation_evaluation.xml, navigations.xsd, evaluations.xml, evaluations.xsd
<b>Example</b>	AddHierarchy \\WEB-INF\\config\\custom\\xml\\custom.xml: Step 9

### 3.5.9 Create a new data view for hierarchy statistics

Assign a new data view to the statistics. Section **Adapt statistics** (Page 67) describes how to edit statistics views.

<b>Location</b>	XML file in the <b>xml</b> folder
<b>Procedure</b>	In the <b>&lt;view&gt;</b> element, create a new data view that connects the new hierarchy to the transactional object to be evaluated and to the user group.
<b>Documents</b>	views.xsd
<b>Example</b>	AddHierarchy \WEB-INF\config\custom\xml\custom.xml: Step 7

You must also create a new view that generates the linked lists of the connected transactional objects from the statistics.

<b>Location</b>	XML file in the <b>xml</b> folder
<b>Procedure</b>	In the <b>&lt;view&gt;</b> element, create a new data view that generates the linked lists of the connected transactional objects from the statistics.
<b>Documents</b>	views.xsd
<b>Example</b>	AddHierarchy \WEB-INF\config\custom\xml\custom.xml: Step 8



## 3.6 Add/adapt statistics

Statistics are evaluations that show the distribution of data across a structure. For example, the control test statistics shows the distribution of test results across a hierarchy.

### 3.6.1 Adapt statistics

Use the XML configuration to perform the following actions (sorted by complexity):

- Adapt the column width
- Link structural elements to associated forms
- Add/adapt columns
  - `statistic.columnGroup.enum-based` header
  - `statistic.columnGroup.perCent-based` header
  - `statistic.column.value-based` header
- Adapt links
- Incorporate new hierarchy

#### 3.6.1.1 Adapt column widths

The width attribute is optional for all columns. If the column width is not configured, the width of the individual columns is calculated automatically. By default, a width of 20% is assigned to the structure, and a width of 1% is assigned to each chart column. The remaining percentage is equally distributed to the other columns. Since Excel and PDF reports do not contain chart columns, the layout is recalculated for a report, that is, the width of the chart columns is distributed to the columns visible in the report.

#### 3.6.1.2 Link structural elements

The tree view of the statistics usually contains nodes that represent objects, such as hierarchies or user groups. You can link these objects to the nodes of the tree view. Linked objects are displayed as a pop-up window.

<b>Location</b>	XML file in the <b>xml</b> folder
<b>Procedure</b>	<ol style="list-style-type: none"> <li>1. Copy the <b>&lt;evaluation&gt;</b> element from the default configuration to the customizing file.</li> <li>2. Add a <b>linkedNodeTypes</b> attribute to the <b>&lt;statistic.column.tree&gt;</b> element. A comma-separated list of the object type IDs must exist as an attribute value.</li> </ol>
<b>Remark</b>	A structural element representing an object type of the comma-separated list is displayed as a link. The link opens the assigned object in a pop-up window.
<b>Documents</b>	evaluations.xsd, evaluations_*.xml
<b>Example</b>	<p>ModifyStatistic</p> <p>\WEB-INF\config\custom\xml\evaluation_custom.xml: Add custom linked nodes</p>

### 3.6.1.3 Add/adapt columns

#### 3.6.1.3.1 statistic.columnGroup.enum-based statistics

Evaluations showing the percentage distribution of enumeration attribute values of specific objects are automatically extended by a column if the corresponding enumeration is extended.

<b>Location</b>	XML file in the <b>xml</b> folder
<b>Procedure</b>	<ol style="list-style-type: none"> <li>1. Copy the <b>&lt;enum&gt;</b> element from the default configuration to the customizing file.</li> <li>2. Create one or more new <b>&lt;enumitem&gt;</b> elements within the <b>&lt;enum&gt;</b> element. Within the <b>&lt;enumitem&gt;</b> element, you can define the color of the column header using the <b>&lt;parameter&gt;</b> element. The same color is used for the display in pie charts.</li> </ol> <p>Example: <code>&lt;parameter name="Background" value="EBB585"/&gt;</code></p>
<b>Remark</b>	This only applies to statistics whose columns are configured using the <b>&lt;statistic.columnGroup.enum&gt;</b> XML element. Virtual enumeration items are used for structuring the column header. This means that real items are subordinate to virtual items in the header.

	You can prevent columns representing enumeration attribute values (real or virtual) from being displayed by inserting the <b>evaluationRelevant</b> attribute with the value <b>false</b> .
<b>Documents</b>	evaluations.xsd, evaluations_*.xml
<b>Example</b>	ModifyObjectLifecycle \WEB-INF\config\custom\xml\testcase_enum_custom.xml: New item as a configuration example

### 3.6.1.3.2 statistic.columnGroup.perCent-based statistics

This element is used for showing absolute and percentage values for non-enumeration values.

<b>Location</b>	XML file in the <b>xml</b> folder
<b>Procedure</b>	<ol style="list-style-type: none"> <li>1. Copy the <b>&lt;evaluation&gt;</b> element from the default configuration to the customizing file.</li> <li>2. Adapt a <b>&lt;statistic.columnGroup.perCent&gt;</b> element. You can add the individual columns of the group using <b>&lt;statistic.column.value&gt;</b> elements. If your calculation is based on <b>&lt;statistic.calculator id="value"/&gt;</b>, you can use the value of the <b>calculation</b> attribute to control the calculation of the column values.</li> </ol>
<b>Remark</b>	The <b>calculation</b> attribute can have the following values. <b>count</b> : The value of the column is increased by <b>1</b> for each value found in the data source. <b>sum</b> : All values of the data source are added up. The values of the data source must be of the <b>Number</b> type. By default, each column group contains a balance column and a pie chart. The balance column contains the sum of values of all columns that are configured using the <b>&lt;statistic.column.value&gt;</b> element. Each sector of a pie chart represents a configured column.
<b>Documents</b>	evaluations.xsd, evaluations_*.xml
<b>Example</b>	ModifyStatistic \WEB-INF\config\custom\xml\evaluation_custom.xml: Add custom value column perCent

### 3.6.1.3.3 `statistic.column.value`-based statistics

Individual values that are not part of a group of percentage values can be added or adapted using the `<statistic.column.value>` item. The values are then displayed as absolute values.

<b>Location</b>	XML file in the <code>xml</code> folder
<b>Procedure</b>	<ol style="list-style-type: none"> <li>1. Copy the <code>&lt;evaluation&gt;</code> element from the default configuration to the customizing file.</li> <li>2. Adapt a <code>&lt;statistic.column.value&gt;</code> element. If your calculation is based on <code>&lt;statistic.calculator id="value"/&gt;</code>, you can use the value of the <code>calculation</code> attribute to control the calculation of the column values.</li> </ol>
<b>Remark</b>	<p>The <code>calculation</code> attribute can have the following values:</p> <p><b>count:</b> The value of the column is increased by <b>1</b> for each value found in the data source.</p> <p><b>sum:</b> All values of the data source are added up. The values of the data source must be of the <b>Number</b> type.</p>
<b>Documents</b>	<code>evaluations.xsd</code> , <code>evaluations_*.xml</code>
<b>Example</b>	<p>ModifyStatistic</p> <p><code>\WEB-INF\config\custom\xml\evaluation_custom.xml</code>: Add custom value column</p>

### 3.6.1.3.4 Adapt links

Each cell, or the values displayed therein can be linked. Usually, the link represents the value of the cell. Example: If the value in a cell of a column that shows the number of open control tests is 10, the link will open a list with 10 open control tests.

<b>Location</b>	XML file in the <b>xml</b> folder
<b>Procedure</b>	<ol style="list-style-type: none"> <li>1. Copy the <b>&lt;evaluation&gt;</b> element from the default configuration to the customizing file.</li> <li>2. Adapt or add the <b>link.typ</b> and <b>link.idref</b> attributes of the <b>&lt;statistic.column.value&gt;</b>, <b>&lt;statistic.columnGroup.perCent&gt;</b>, and <b>&lt;statistic.columnGroup.enum&gt;</b> elements.  <b>list</b> and <b>evaluation</b> are permitted as a <b>link.typ</b> attribute value. An ID from the file <b>lists_*.xml</b> or <b>evaluations_*.xml</b> is expected as a <b>link.idref</b> attribute value.</li> </ol>
<b>Remark</b>	The linked list or evaluation is filtered using the values that were used for filtering the data source of the statistics. This means that the view of linked list or evaluation is subject to the same conditions.
<b>Documents</b>	evaluations.xsd, evaluations_*.xml, lists_*.xml
<b>Example</b>	ModifyStatistic  \WEB-INF\config\custom\xml\evaluation_custom.xml: Add custom linked column

### 3.6.1.3.5 Use a new hierarchy

For details on using new hierarchies, see the chapter **Add/adapt hierarchies** (Page 61).

## 3.7 Add/adapt reports

Report definitions can be customized in various ways. Adaptations that were realized only through changes to the XML configuration are only possible for form and list reports. They are described in the two following chapters.

### 3.7.1 Add/adapt reports for forms

Specialized report definitions already exist for some forms, such as the questionnaire. They are missing, however, for other objects, such as risk and control. In this case, a report definition is automatically generated from the form and immediately applied before report execution starts. For forms and lists, these report definitions are written to the file **reports\_dynamicreports.xml** so that they can be used as customizing examples. The following examples explain how existing report definitions for forms can be replaced, and how new report definitions can be defined for forms that have no specialized report definition yet.

#### 3.7.1.1 Replace an existing form report definition

To replace an existing form report, simply specify a report definition with the same ID and format in any customizing XML file. This report definition is used instead of the default definition. In the example below, the default form report of the questionnaire is replaced by a shorter version, from which the output of questions is excluded.

<b>Location</b>	XML file in the <b>xml</b> folder
<b>Procedure</b>	<ol style="list-style-type: none"> <li>1. Copy the report definition of the form.</li> <li>2. Change it according to your requirements.</li> </ol>
<b>Documents</b>	Report XML files in the default configuration serving as templates
<b>Example</b>	FormReports_ReplaceExisting \WEB-INF\config\custom\xml\custom.xml: Replace standard questionnaire form report with a simplified version

### 3.7.1.2 Add a new form report definition

The procedure of adding a form report to forms without a specialized report definition is the same as the procedure described in the above example. Ensure that the report ID corresponds to the name of the form object type and is written in upper-case letters. In the following example, a PDF form report for risks is defined. Therefore, the report ID is **RISK**. It references the subordinate form report **CONTROL**. As this report is not defined explicitly, ARIS Risk and Compliance continues to use a definition directly generated from the form.

<b>Location</b>	XML file in the <b>xml</b> folder
<b>Procedure</b>	Create a new report definition.
<b>Documents</b>	Report XML files in the default configuration serving as templates
<b>Example</b>	FormReports_AddNew \WEB-INF\config\custom\xml\custom.xml: Add a new risk form report

### 3.7.1.3 Incorporate a new form report selection

Instead of creating a form report, you can configure a selection dialog that references various other reports. The ID of such a selection dialog must either correspond exactly to the form object type in capital letters or have the suffix **\_SELECT**. The following example defines a report selection for an EXCEL form report of a risk assessment, allowing you to additionally select the default form report, a special user-defined report, or a combination of both. For the Excel format, the default form report is created automatically.

<b>Location</b>	XML file in the <b>xml</b> folder
<b>Procedure</b>	<ol style="list-style-type: none"> <li>1. Create a new report definition.</li> <li>2. Enable <b>Excel report</b> in the form.</li> </ol>
<b>Documents</b>	Report XML files in the default configuration serving as templates
<b>Example</b>	<ul style="list-style-type: none"> <li>▪ FormReports_AddSelection\WEB-INF\config\custom\xml\custom_report.xml: Add a new selection</li> <li>▪ FormReports_AddSelection\WEB-INF\config\custom\xml\custom_report.xml: Add a new form report</li> <li>▪ FormReports_AddSelection\WEB-INF\config\custom\xml\custom_forms.xml: Activate excel report button</li> </ul>

## 3.7.2 Add/adapt reports for lists

Specialized report definitions already exist for some lists, such as the user list or control test list. They are missing, however, for other lists, such as risk and control lists. In this case, a report definition is automatically generated from the relevant list and immediately applied before report execution starts. For forms and lists, these report definitions are written to the file **reports\_dynamicreports.xml** so that they can be used as customizing examples. The following examples explain how existing report definitions for lists can be replaced, and how new report definitions can be defined for lists that have no specialized report definitions yet.

### 3.7.2.1 Replace an existing list report definition

To replace an existing list report, simply specify a report definition with the same ID and format in any customizing XML file. This report definition is used instead of the default definition. In the example below, the default list report for users is replaced by a shorter version that reduces the number of columns.

<b>Location</b>	XML file in the <b>xml</b> folder
<b>Procedure</b>	<ol style="list-style-type: none"><li>1. Copy the report definition of the list.</li><li>2. Change it according to your requirements.</li></ol>
<b>Documents</b>	Report XML files in the default configuration serving as templates
<b>Example</b>	ListReports_ReplaceExisting <code>\WEB-INF\config\custom\xml\custom.xml</code> : Replace standard user list report with a simplified version



### 3.7.2.2 Add a new list report definition

The procedure of adding a list report to lists without a specialized report definition is the same as the procedure described in the above example. The report ID must be identical to the list ID. In the following example, a PDF list report is defined for the list of risks in Explorer, which is displayed for the test manager. Therefore, the report ID is **RISK**.

<b>Location</b>	XML file in the <b>xml</b> folder
<b>Procedure</b>	Create a new report definition.
<b>Documents</b>	Report XML files in the default configuration serving as templates
<b>Example</b>	ListReports_AddNew \WEB-INF\config\custom\xml\custom.xml: Add a new risk list report

### 3.7.2.3 Incorporate a new report selection

Instead of creating a list report, you can configure a selection dialog that references various other reports. The ID of such a selection dialog must either correspond exactly to the list ID or must have the suffix **\_SELECT**. The following example defines a report selection for the Excel list report of the risk assessment list in Explorer, allowing you to additionally select the default list report, a special user-defined report, or a combination of both. For the Excel format, the default list report is created automatically.

<b>Location</b>	XML file in the <b>xml</b> folder
<b>Procedure</b>	Create a new report definition.
<b>Documents</b>	Report XML files in the default configuration serving as templates
<b>Example</b>	<ul style="list-style-type: none"> <li>▪ ListReports_AddSelection\WEB-INF\config\custom\xml\custom.xml: Add a new selection</li> <li>▪ ListReports_AddSelection\WEB-INF\config\custom\xml\custom.xml: Add a new list report</li> </ul>

## 3.8 Adapt message templates

### 3.8.1 Add a new message template

Before you can use a new message template, you must add it.

<b>Location</b>	XML file in the <b>xml</b> folder
<b>Procedure</b>	<ol style="list-style-type: none"> <li>1. Copy the <b>&lt;enum&gt;</b> element with the ID <b>initiators</b> from the default configuration to customizing.</li> <li>2. Next, use the <b>&lt;enumitem&gt;</b> element to create new message templates within the <b>&lt;enum&gt;</b> element. You must at least specify the attributes <b>id</b> and <b>value</b>. The value must be unique for both attributes within the <b>&lt;enum&gt;</b> element.</li> <li>3. Create a new property entry for the new message template (see <b>Add/adapt properties of an enumeration</b> (Page 32)). This entry enables the display of the message template in the list of templates.</li> </ol>
<b>Documents</b>	enumerations.xml, enumerations.xsd
<b>Example</b>	<ul style="list-style-type: none"> <li>▪ ModifyMessageTemplate_AddNewMessageTemplate\WEB-INF\config\custom\xml\custom.xml: Add new message template</li> <li>▪ ModifyMessageTemplate_AddNewMessageTemplate\WEB-INF\config\custom\properties\application\custom.properties: Add new message template to template list</li> </ul>

### 3.8.2 Add a new message template content



After adding a new message template, you must add contents to it.

<b>Procedure</b>	Add two new property entries to the <b>custom.properties</b> file (see <b>Add/adapt properties</b> (Page 24)).
<b>Remark</b>	The names of the new entries must comply with the following conventions: Subject of the message: message.<template_name>.subject.DBI Contents of the message: message.<template_name>.text.DBI
<b>Example</b>	ModifyMessageTemplate_AddNewMessageTemplate \WEB-INF\config\custom\properties\application\custom.properties: Add contents to new message template

### 3.8.3 Customize the content of a message template

You can adapt the contents of a message template in ARIS Risk and Compliance. The texts contain functions that can be used to insert variable text into the message, for example, the name of the relevant user with `$user.getName()`. The functions are preceded by a **\$** and must not be changed.

#### Procedure

1. Click  **Administration**. The **General** menu item is displayed initially.
2. Click **Basic settings** under **System management** or click **Environments** under **Environment management**, depending on which message template you want to edit.
3. If you selected **Environments**, click the relevant environment ID and then select **Notification**.
4. If you selected **Basic settings**, select **Notification**. The list is displayed.
5. Open the message template you want to change.
6. Change the subject or text.
7. Click the relevant **Notification type** to specify whether notifications are sent by e-mail and/or to the internal ARIS Risk and Compliance mailbox.
8. Click  **Save**.

Options or text for the automatic notification are changed. As long as you do not restore the message template to the default using the user interface, the content from the database is used. Another method of modifying a message template is similar to the method of adding a new message template (see **Add a new message template** (Page 76)). The only difference is that you adapt the property value.

<p><b>Remark</b></p>	<p>If a message template requires values that can only be determined dynamically during runtime, they are incorporated as objects and variables. The difference between these two both options is that an object provides the methods for accessing values, while a variable has a given value. By default, the object responsible for the form flow is always available. You can access all attributes defined for these object types including <b>Inheritance</b> (Page 4) using the corresponding method. The usage of objects in a message template must comply with the following conventions:</p> <ul style="list-style-type: none"> <li>▪ For an object or a variable to be accessible, the prefix <b>\$</b> must always be added.</li> <li>▪ The object name always corresponds to the defined attribute ID of the <b>&lt;objectType&gt;</b> element in lower-case letters.</li> <li>▪ The method name always consists of the prefix <b>get</b> and the attribute ID of the <b>&lt;attrType&gt;</b> element. Note that <b>get</b> must always be followed by an upper-case letter. Furthermore, underscores in the ID are identified via a filter and replaced with the upper-case letter of the subsequent word.</li> </ul> <p><b>Example</b> Object type <b>Testdefinition</b> with defined ID <b>TESTDEFINITION</b> and attribute <b>owner_group</b></p> <p>Access to this attribute in the message template: <b>\$testdefinition.getOwnerGroup()</b></p> <p>The following additional objects and variables are available by default:</p> <ul style="list-style-type: none"> <li>▪ <b>\$user</b> – Object providing recipient information</li> <li>▪ <b>\$client</b> – Object providing environment information</li> <li>▪ <b>\$serverConnection</b> – Variable providing a link to the server</li> </ul> <p>If more objects or variables are required, they can only be provided by Java code implementation. User-defined implementations are indicated by message templates that already use additional objects and variables.</p>
<p><b>Documents</b></p>	<p>objectTypes.xml, objectTypes.xsd</p>
<p><b>Example</b></p>	<p>ModifyMessageTemplate_AddNewMessageTemplate          \WEB-INF\config\custom\properties\application\custom.properties: Add contents to new message template</p>

### 3.8.4 Send messages

Once a new message template has been created, it can be incorporated into the form flow and sent.

<b>Location</b>	XML file in the <b>xml</b> folder
<b>Procedure</b>	<ol style="list-style-type: none"> <li>1. Copy a <b>&lt;catalog&gt;</b> element from the default configuration to the customizing file.</li> <li>2. Use the <b>&lt;command&gt; sendMail</b> element to add the new message template to the <b>&lt;commandchain&gt;</b> element.</li> <li>3. Define the new message template and the message recipients using <b>&lt;parameter&gt;</b> elements. In this context, usage of the parameter <b>cc</b> is optional. The defined <b>id</b> attribute of the associated <b>&lt;listAttrType&gt;</b> element - which additionally contains the <b>objectType.idref</b> attribute with the values <b>USER</b> or <b>USERGROUP</b> - is always a permitted value for the parameters <b>to</b> and <b>cc</b>.</li> </ol>
<b>Documents</b>	commandchains_[module].xml, commandchains.xsd, objectTypes.xml, objectTypes.xsd
<b>Example</b>	ModifyMessageTemplate_AddNewMessageTemplate \WEB-INF\config\custom\xml\custom.xml: Add send mail command to send new message

### 3.9 Add/adapt segregation of duties

Segregation of duties is to ensure that specific objects are subject to dual control. For this, you must configure a pair of roles users must not have simultaneously if they want to edit these objects. For example, a control test must not be processed by a user who has the **Tester** and the **Reviewer** role for this control test.

<b>Location</b>	XML file in the <b>xml</b> folder
<b>Procedure</b>	<ol style="list-style-type: none"> <li>1. Copy the <b>&lt;segregationsOfDuties&gt;</b> element from the default configuration to the customizing file.</li> <li>2. Create one or more <b>&lt;segregationsOfDuties&gt;</b> elements within the <b>&lt;segregationsOfDuties&gt;</b> element.</li> <li>3. In the <b>objectType</b> attribute, specify the object type of the object for which a segregation of duties is to be configured.</li> <li>4. Within the <b>&lt;segregationOfDuties&gt;</b> element, specify the two roles users must not have concurrently if they want to edit an object in two separate <b>&lt;segregationsOfDuties&gt;</b> elements.</li> </ol>
<b>Remark</b>	To revoke dual control, remove the <b>&lt;segregationsOfDuties&gt;</b> element.
<b>Documents</b>	segregationsOfDuties.xsd, segregationsOfDuties.xml
<b>Example</b>	<pre> &lt;segregationOfDuties objectType="testcase"&gt;   &lt;segregationsOfDuties.role id="tester"/&gt;   &lt;segregationsOfDuties.role id="testreviewer"/&gt; &lt;/segregationOfDuties&gt; </pre>

## 3.10 Add/adapt rule

Rules are used to manipulate the behavior of forms. In the default configuration, the rules that are to be applied to a form are stored in individual DRL files named for the object type of the form (for example, risk.drl).

### 3.10.1 Overwrite an existing rule file

To overwrite an existing rule file, save a file with the same name to the path **WEB-INF/config/custom/rules**. When the server is started, this file is referred to instead of the default file. All conditions and results defined in rules are textual descriptions of the functionality that is to be implemented by the rule. They must be DSL items specified in the DSL file, which in turn is referenced in the DRL file as well as in its defined rule set. The example shows how to add a new attribute to the **USERGROUP** object, how to extend the form accordingly, and how to replace existing form rules with an extended version. It also illustrates the definition of a new attribute and adaptation of the form.

<b>Location</b>	DRL file in the <b>rules</b> folder.
<b>Procedure</b>	Copy the DRL file of the required form to the folder mentioned above. If necessary, change existing rules or add new rules to the file.
<b>Documents</b>	Corresponding DSL file in the default configuration Java doc of the <b>CollectiveHelper</b> class and its derived classes for an overview of possible conditions and consequences.
<b>Example</b>	ModifyRules_ReplaceDRL\WEB-INF\config\custom\rules\usergroup.drl: Add custom rule ModifyRules_ReplaceDRL\WEB-INF\config\custom\xml\custom.xml: Add new usergroup attribute creator_remark ModifyRules_ReplaceDRL\WEB-INF\config\custom\xml\custom.xml: Add text box in usergroup form for new usergroup attribute 'creator_remark'

### 3.10.2 Incorporate a new rule file

To incorporate a new rule file, you must define a new rule set that must reference the same DSL file that is referenced within the rule file. This rule set must be saved to a custom XML file under **WEB-INF/config/custom/xml**. Furthermore, you must overwrite the existing rule context to which the new rule set is to belong, and also save it to a custom XML file under the path mentioned above. In the following example, the rules of the USERGROUP form are extended by two new rules.

<b>Location</b>	DRL file in the <b>rules</b> folder XML file in the <b>xml</b> folder
<b>Procedure</b>	<ol style="list-style-type: none"> <li>1. Copy the DRL file of the required form.</li> <li>2. Keep the header up to the import statements and delete the rest.</li> <li>3. Add new rules according to your requirements.</li> <li>4. Incorporate the new DRL file into a new rule set and save it to a custom.xml file.</li> <li>5. Overwrite the rule context of the corresponding form and incorporate the new rule set in addition to the default set.</li> </ol>
<b>Documents</b>	<p>Corresponding DRL file in the default configuration</p> <p>Corresponding DSL file in the default configuration</p> <p>rulesetReg.xml in the default</p> <p>Java doc of the <b>CollectiveHelper</b> class and its derived classes for an overview of possible conditions and consequences.</p>
<b>Example</b>	<p>ModifyRules_AddDRL\WEB-INF\config\custom\rules\usergroup.drl: Add custom rule set</p> <p>ModifyRules_AddDRL\WEB-INF\config\custom\xml\custom_ruleContext.xml: Overwrite the ruleContext and add the custom ruleSet</p> <p>ModifyRules_AddDRL\WEB-INF\config\custom\xml\custom_ruleContext.xml: Add custom ruleSet</p> <p>ModifyRules_AddDRL\WEB-INF\config\custom\xml\custom_usergroupform: Enable rule execution on change of form element 'name'</p>



### 3.10.3 Reuse existing rules for new attributes

To add a new attribute with identical behavior in terms of visibility and mandatory field conditions to an existing group of attributes, you can assign the **behavesLike** characteristic to the object type. The following example shows this mechanism with the risk owner being provided with a new mandatory attribute for the case that the risk assessment is to be assessed with the **Qualitative** type.

<b>Location</b>	XML file in the <b>xml</b> folder
<b>Procedure</b>	<ol style="list-style-type: none"> <li>1. Copy the definition of the relevant object type and add the new attribute.</li> <li>2. Under <b>behavesLike</b> at this attribute, enter the name of another defined attribute the behavior of which the new attribute is to adopt.</li> <li>3. Add the attribute to the form.</li> </ol>
<b>Documents</b>	objectTypes.xml in the default
<b>Example</b>	<p>ModifyRules_UseFreeriders  \WEB-INF\config\custom\xml\custom.xml: Add custom freerider attribute</p> <p>ModifyRules_UseFreeriders  \WEB-INF\config\custom\xml\custom.xml: Add new attribute into risk assessment form</p>

## 3.11 Add/adapt a scheduled task

### 3.11.1 Generator

#### 3.11.1.1 Adapt the object search

The search for initial recurring objects, such as a control test definition for control tests or a risk for risk assessment is controlled in the default configuration with the **commandchains\_generator.xml** file. It includes a **generator\_[target type]** chain, which is linked to either the **RecurringObjectSearchCommand** command or a derivation of it.

This command is responsible for finding all recurring objects that come into consideration for the generation of transactional objects. These objects or rather their OVIDs are written by Command in the CommandChainContext and from there extracted and reused by the generator.

<b>Location</b>	XML file in the <b>xml</b> folder
<b>Procedure</b>	Copy the appropriate <catalog> from the default configuration to customizing. Then, adapt the command chain.
<b>Documents</b>	commandClassMapping.xml, blClassMapping.xsd, commandchains_generator.xml, commandchains.xsd

### 3.11.1.2 Generate objects

The generator creates an empty transactional object for each OVID of a recurring object that the generator receives by performing the object search. Whether this object can be filled and saved correctly is determined by the workflow configuration of the transactional object. Each transactional object type in the workflow has a connection in **<state.initial>** for which only the generator server tasks are authorized (**permission**). When the object is created, the generator follows this workflow connection.

#### Example for the TESTCASE object type

Command chain **prepareJob** in the **testcase** catalog.

The chain with which the transactional object is checked and filled is defined on this workflow connection. The first part of the chain consists of derivations of the **GeneratorCondition CheckCommand** class, each of which checks for the relevant recurring object (for example, control test definition) whether all conditions for the generation are met. The second part consists of a derivation of **GenerateCommand**. Here attribute values are assigned to the new transactional object, for example control test. Since these are commands, the behavior can be adapted by omitting, replacing, and supplementing. After the chain described above has successfully completed, the transactional object is in the **<state.prepared>** status. This means that the generator creates the object, but the object is not yet persistent. In the second step, the generator follows the connection for which it is authorized (permission) and which leads to the first workflow status that allows manual processing by the user. In the default configuration, these are the states in which the tasks for the owner or the creator are defined.

#### Example for the TESTCASE object type

Command chain **insertJob** in the **testcase** catalog.

The command **prepareJobMessageCommand** within this second connection defines which notifications should be sent to the owner. During its cycle, the generator collects the messages from all created objects, combines them as far as possible and sends them to the recipients defined above.

<b>Location</b>	XML file in the <b>xml</b> folder
<b>Procedure</b>	<ol style="list-style-type: none"> <li>1. Copy the appropriate &lt;catalog&gt; from the default configuration to customizing.</li> <li>2. Adapt the command chain.</li> </ol>
<b>Documents</b>	<ul style="list-style-type: none"> <li>▪ commandClassMapping.xml, blClassMapping.xsd,</li> <li>▪ commandchains_[module].xml,</li> <li>▪ commandchains.xsd, workflow_[module].xml</li> </ul>

### 3.11.2 Adapt the object search

The monitoring server task can be adapted so that for transactional objects, for example, control tests, you can specify in their workflow whether they are checked by the monitoring server task or not. If an object with a specific workflow state is to be checked by the monitoring server task, a task item must be entered for the state. In the default configuration, these are the states that represent the processing carried out by the owner group.

<b>Location</b>	XML file in the <b>xml</b> folder
<b>Procedure</b>	<ol style="list-style-type: none"><li>1. Copy the appropriate workflow to customizing.</li><li>2. Modify the <b>&lt;task.item&gt;</b> elements at the individual states.</li></ol>
<b>Remark</b>	Make sure that the <b>time.limitation</b> property in the task definition is not set to <b>false</b> , otherwise, the monitoring server task ignores these tasks.
<b>Documents</b>	workflow.xsd, workflow_[module].xml

### 3.11.3 Updater

<b>Location</b>	XML file in the <b>xml</b> folder
<b>Procedure</b>	See Generator (Page 84)
<b>Documents</b>	Commandchain_update.xml

## 3.12 Adapt offline processing

Offline processing cannot be customized in general. This applies to downloading in forms and lists, assignment of offline processors, generation of one or more offline files, uploading with manual or automatic confirmation, and so on. However, up to a certain point, the predefined steps can be modified in terms of content. The following chapters describe the various options as XML configuration or program adaptations.

### 3.12.1 Modify offline documents

The default implementation of offline processing uses the report engine to generate special Excel documents during the download or to import them during the upload. This procedure is based on specific report definitions stored in default report XML files called **reports\_offlineprocessing\_<component name>.xml**. These report definitions must adhere to additional conventions:

- Their ID must always be specified in upper-case letters. Example: **<ID of object type>\_<ID of editor role>**.
- The default implementation uses Excel reports only, which means that the required format must be Excel.
- Excel cells that offline editors can edit must be marked with the renderer **offlineProcessingInputReferenceRenderer** or, optionally, with the style **offlineinputcell**.
- The auto component **offlineinfo** must be part of the report definition.

When adapting editable cells in the report definition, you must ensure that these cells are marked as editable by the rule engine for the selected editor role. Otherwise, all attempts to upload documents are canceled. The following example shows how to incorporate the control test attributes **Walkthrough name** and **Walkthrough counter** into offline processing for the tester.

<b>Location</b>	XML file in the <b>xml</b> folder DRL file in the <b>rules</b> folder.
<b>Procedure</b>	<ol style="list-style-type: none"> <li>1. Copy the <b>TESTCASE_TESTER</b> report definition of the form to a separate custom.xml file and use the <b>offlineProcessingInputReferenceRenderer</b> report renderer for the cells of the <b>Walkthrough name</b> and <b>Walkthrough counter</b> attributes.</li> <li>2. Copy the rules of the control test form to a separate <b>testcase.drl</b> file.</li> <li>3. Adapt the rules so that the tester is allowed to edit the two attributes in the form.</li> </ol>
<b>Documents</b>	reports_offlineprocessing_testmanagement.xml as a template testcase.drl as a template
<b>Example</b>	<ul style="list-style-type: none"> <li>▪ OfflineProcessing_CustomizeDocument\WEB-INF\config\custom\xml\custom.xml: Enable offline processing for the two attributes in the offline document</li> <li>▪ OfflineProcessing_CustomizeDocument\WEB-INF\config\custom\rules\testcase.drl: Mark the two attributes as editable for testers</li> </ul>

### 3.12.2 Change the offline operator roles definition

The **offlineProcessing.xml** configuration file specifies the offline editor roles that can occur as operators of other roles. In the default configuration, these operators are the manager groups for **Test Management**, **Risk Management**, and **Survey Management**, which can start a check-out for their owner and reviewer groups. Adding a new role, whether intended for offline processing or not, always requires comprehensive customizing of ARIS Risk and Compliance and the workflows. Therefore, the example below only shows how to restrict the operator role of the risk manager because this does not require the creation of a new role. In this example, the risk manager functions as an operator only for the risk owner, and no longer for the risk reviewer.

<b>Location</b>	XML file in the <b>xml</b> folder
<b>Procedure</b>	Copy the <b>&lt;offline-operators&gt;</b> XML element from the file <b>offlineProcessing.xml</b> . Keep only the <b>&lt;operator-role&gt;</b> entry and change it.
<b>Documents</b>	offlineProcessing.xml as a template
<b>Example</b>	OfflineProcessing_ChangeOperator\WEB-INF\config\custom\xml\custom.xml: Restrict operator role of risk manager

### 3.12.3 Add a new offline editor role

The **offlineProcessing.xml** configuration file specifies the roles existing in ARIS Risk and Compliance which can act as Offline editor roles for specific objects. In the default configuration, these roles for **Test Management**, **Risk Management**, and **Survey Management** can be assumed by the relevant manager, owner, and reviewer groups. Adding a new role always requires comprehensive customizing of ARIS Risk and Compliance and the workflows. Therefore, the XML fragment below (extract from a custom.xml) only shows how to add a new **testvalidator** role without any further integration into the existing workflows.

```
<offline-editable>
<object-type name="testcase">
<object-type-role id="testmanager"/>
<object-type-role id="tester"/>
<object-type-role id="testreviewer"/>
<!-- enable new role for offline processing -->
<object-type-role id="testvalidator"/>
</object-type>
...
</offline-editable>
```

### 3.12.4 Adapt offline processors

The example **Modify offline documents** (Page 87) shows how to adapt Excel documents from offline processing, which were created by the report engine. It is also possible to generate Excel files in a completely different way or use other document formats by replacing the default offline processors by a custom implementation that generates such documents, extracts changes made by the offline editor, and re-imports the changes into ARIS Risk and Compliance. These classes must implement the **ICheckOutProcessor** or **ICheckInProcessor** interface and can then be incorporated into a **custom.xml** with the XML fragment below:

```
<processors>
  <checkOut>
    <checkOutProcessor
format="PDF"
className="com.idsscheer.webapps.arcm.bl.offlineprocessing.processors.MyCustomPDFCheckOutProcessor" />
  <checkIn>
    <checkInProcessor format=" PDF "
className="com.idsscheer.webapps.arcm.bl.offlineprocessing.processors.MyCustomPDFCheckInProcessor " />
  </checkIn>
</processors>
```

### 3.12.5 Adapt offline behavior for each object type

For each object type, the implementation of the **IOfflineProcessingBehaviour** interface assigned to it determines the circumstances under which a specific object is classified as offline editable depending on its state and current user. In the default configuration, a special feature of the questionnaire is, for example, that all subordinate sections, questions, and so on, are locked for editing once offline processing starts for the questionnaire. You can customize this behavior by incorporating custom implementations of the above-mentioned interfaces in a **custom.xml** file using the following XML fragment:

```
<processingBehaviour>
  <controller objectType="testcase"
className="com.idsscheer.webapps.arcm.bl.offlineprocessing.behaviour.custom.MyTCOfflineProcessingBehaviour" />
</processingBehaviour>
```

## 3.13 Add/adapt dashboard data feed

### 3.13.1 Adapt dashboard data feed


If you adapt an object type for customizing, for example, if you add an attribute, you are recommended adapting the existing MashZone list accordingly. For this, copy the relevant MashZone data query to the customizing area and modify it as required.

<b>Location</b>	XML file in the <b>xml</b> folder
<b>Procedure</b>	<ol style="list-style-type: none"> <li>1. Insert a copy of the <b>&lt;view&gt;</b> element from the default configuration below the <b>&lt;custom&gt;</b> element.</li> <li>2. Modify as required, for example, insert additional attributes or remove attributes.</li> </ol>
<b>Documents</b>	mashzone_views.xml, views.xsd
<b>Example</b>	<ul style="list-style-type: none"> <li>▪ AddModifyMashzoneURL\WEB-INF\config\custom\xml\custom.xml: Modify data list</li> <li>▪ AddModifyMashzoneURL\WEB-INF\config\custom\properties\application\custom.properties: Modify data list</li> <li>▪ AddModifyMashzoneURL\WEB-INF\config\custom\rules\issue.drl: Modify data list</li> </ul>



### 3.13.2 Add dashboard data feed

#### 3.13.2.1 Add a MashZone list for object data

To add a new list to ARIS Risk and Compliance in  **Administration > Integration > Dashboard management > Dashboard data feeds**, you must create a new MashZone-relevant data query (**view**) in the configuration. See the associated XML schema **views.xsd** for details. If the **relevantForMashzoneIntegration** attribute of the relevant **<view>** element is set to **true**, the list and filter view is generated automatically in the data feed generator. In this case, you can also run a CSV query using the MashZone NextGen/ARIS Aware interface.

<b>Location</b>	XML file in the <b>xml</b> folder
<b>Procedure</b>	<ol style="list-style-type: none"> <li>1. Create a new <b>&lt;view&gt;</b> element below the <b>&lt;custom&gt;</b> element.</li> <li>2. MashZone data queries are subject to the same rules as the other data queries. However, they must be marked with the flag <b>relevantForMashzoneIntegration="true"</b>.</li> </ol> <p>For example, this enables you to quickly convert existing data queries into MashZone data queries by copying them and setting the true flag for them. All columns (<b>&lt;viewsColumn&gt;</b>) that are not explicitly excluded by setting the <b>meshzoneRelevant="false"</b> flag are available in the URL generator later.</p>
<b>Documents</b>	mashzone_views.xml, views.xsd
<b>Example</b>	<ul style="list-style-type: none"> <li>▪ AddModifyMashzoneURL \WEB-INF\config\custom\xml\custom.xml: Add new data list</li> <li>▪ AddModifyMashzoneURL \WEB-INF\config\custom\properties\application\custom.properties: Add new data list</li> </ul>

### 3.13.2.2 Add a MashZone list for object links

The procedure of adding a list for object links is identical to the procedure of adding a data list. They only differ in content. Data lists focus on the data attributes of the object, while a link list provides the IDs of the objects to be linked. You are recommended using an existing list as a basis.

<b>Location</b>	XML file in the <b>xml</b> folder
<b>Procedure</b>	<ol style="list-style-type: none"> <li>1. Generate a view that provides only the IDs and, if required, the names of the objects to be linked.</li> <li>2. Link the objects within the MashZone NextGen/ARIS Aware Feed Editor.</li> </ol>
<b>Documents</b>	mashzone_views.xml, views.xsd
<b>Example</b>	<ul style="list-style-type: none"> <li>▪ AddModifyMashzoneURL\WEB-INF\config\custom\xml\custom.xml: Add new object relation list</li> <li>▪ AddModifyMashzoneURL\WEB-INF\config\custom\properties\application\custom.properties: Add new object relation list</li> </ul>

### 3.13.2.3 Assign a name to a MashZone list

You can assign a name to a MashZone list using a property key in a property file. The following naming conventions apply:

- The key must have the format **view.<view ID>.DBI**.
- The file must not contain underscores (\_) as separators because the underscore is used as a separator for the country code.

If the name is to be available in different languages, you must generate one file for each language and assign the appropriate country codes. Example: **custom\_en.properties** (English) or **custom\_de.properties** (German).

<b>Location</b>	Property file in the <b>properties\application</b> folder
<b>Procedure</b>	<ol style="list-style-type: none"> <li>1. Add a line in a new or an existing file according to the above-mentioned naming convention.</li> <li>2. Enter a name after the equal sign.</li> </ol>
<b>Documents</b>	See <b>Adapt names</b> (Page 3).
<b>Example</b>	AddModifyMashzoneURL \WEB-INF\config\custom\properties\application\custom.properties: Add new data list und Add new object relation list

## 3.14 Adjust navigation

You can adjust parts of the navigation within the HTML interface of ARIS Risk and Compliance by adapting the navigation XML files. Adjustments can be made for Navigation within the individual interface areas **Home**, **Explorer**, **Evaluation** and **Administration**.

### 3.14.1 Adapt navigation for an area

The contents of **Home**, **Explorer**, **Evaluation** and **Administration** can be adapted using the associated XML file (navigation\_home.xml, navigation\_explorer, navigation\_evaluation, navigation\_administration.xml). For **Home**, the XML file contains information on the menu items to be displayed in the main window. For Explorer and Evaluation, the XML file contains information on the structure of the left-hand navigation. For Administration, the XML FILE contains information on the structure of the top navigation bar and the content of each associated tab.

The following elements can be defined within the navigation XML files:

- **<nav.item>**  
Used as a structural element for a group of elements. Can alternatively be used as a reference for an element that is defined in the XML files.
- **<nav.data.grid>**  
Represented as a link, opens a list. Used in all areas.
- **<nav.evaluation>**  
Represented as a link, opens an evaluation. Only used in Evaluation.
- **<nav.job>**  
Represented as a link or button, schedules an administrative background server task. Only used in Administration.
- **<nav.action>**  
Represented as a link or button, immediately performs an action. Only used in Administration.
- **<nav.object>**  
Represented as a link, opens an ARIS Risk and Compliance object. Only used in Administration.

You can define the display of these elements with `<nav.access>`. The element is displayed only if all requirements defined in `<nav.access>` are met. The following types of condition exist:

- **<nav.access.component>**  
Users must be assigned in ARIS Risk and Compliance to the role that provides them with access to the functions relevant for them.
- **<nav.access.privilege>**  
Users must have the specified system privilege for at least one of the roles assigned to them. The privileges are defined in the **roles.xml** file.
- **<nav.access.role>**  
Users must have the specified role. The privileges are defined in the **roles.xml** file.

Each type of condition can exist only once in each condition.

A **<nav.item>** element propagates its access conditions to all child elements. If a **<nav.item>** element contains a subordinate **<nav.data.grid>** element, the conditions directly assigned to the elements and those of the parent element are combined.

**Example**

In the navigation, an existing list is inserted at an additional position and another access privilege is defined for it.

Location	XML file in the xml folder
Procedure	<ol style="list-style-type: none"> <li>1. Copy the <b>&lt;nav.module&gt;</b> element or individual <b>&lt;nav.item&gt;</b> elements from the default to the customizing file.</li> <li>2. Embed them within a <code>&lt;navigation&gt;</code> element. Subsequently, use the <b>navigation.xsd</b> file to change the contents.</li> </ol>
Documents	navigation_explorer.xml, navigation.xsd
Example	Navigation_Module\WEB-INF\config\custom\xml: Modify the module navigation

## 3.15 Adapt and extend event enabling

The control of processes through events is achieved by processing incoming events that trigger the generation of certain objects in different states in ARIS Risk and Compliance. You cannot adapt this type of control. You can adapt the attributes of the objects generated in ARIS Risk and Compliance, for example, control tests, by adapting the existing configuration files or by generating an additional configuration file based on existing ones. These adaptations and extensions are carried out by a Complex Event Processing Engine administrator. Two customizing options in ARIS Risk and Compliance are described below. See the Complex Event Processing documentation for information on how the files are managed in the Complex Event Processing Engine, that is, which events are sent and which configuration files they are based on. For detailed information on event enabling, refer to the online help of ARIS Risk and Compliance (**Administrate ARIS Risk and Compliance > Integrate external events**).

**ARIS video tutorial - Event enabling** (approx. 7 minutes)

Online version: (<http://www.ariscommunity.com/videos/learn-how-control-procedures-arcem-external-events>) in ARIS Community.

### 3.15.1 Extend existing Digital Event Types

The default implementation of the control with events uses configuration files supplied in Digital Event Type format (JSON and DX) for the Complex Event Processing Engine. The **Digital Event Types** files are automatically generated for the related object by ARIS Risk and Compliance based on information stored in the **objectTypes.xml**.

To add an additional attribute to the Digital Event Type of a particular object, mark the relevant attribute in the **custom.xml** as **isEventRelevant**, as usual in Customizing. After a restart of ARIS Risk and Compliance, the local Digital Event Types is updated.

<b>Location</b>	XML file in the <b>xml</b> folder.
<b>Procedure</b>	<ol style="list-style-type: none"> <li>1. Copy the <b>&lt;objectType&gt;</b> element from the default configuration to the customizing file.</li> <li>2. Add the <b>isEventRelevant</b> property with value <b>true</b> to the attribute element that is to be added to the Digital Event Type of the object.</li> </ol>
<b>Documents</b>	objectTypes.xml, objectTypes.xsd

### 3.15.2 Create new Digital Event Type

The default implementation of the control with events uses configuration files supplied in Digital Event Type format (JSON and DX) for the Complex Event Processing Engine. The **Digital Event Types** files are automatically generated for the related object by ARIS Risk and Compliance based on information stored in the **objectTypes.xml**.

To generate new Digital Event Types, mark objects of the **objectTypes.xml** as **isEventRelevant**. The same applies to the related attributes that are part of the Digital Event Type. After a restart of ARIS Risk and Compliance, the local type repository is updated and the new Digital Event Type is available.

<b>Location</b>	XML file in the <b>xml</b> folder.
<b>Procedure</b>	<ol style="list-style-type: none"> <li>1. Copy the <b>&lt;objectType&gt;</b> element from the default configuration to the customizing file.</li> <li>2. Add the <b>isEventRelevant</b> property with value <b>true</b> to the <b>&lt;objectType&gt;</b> element.</li> <li>3. Add the <b>isEventRelevant</b> property with value <b>true</b> to all attribute elements that are part of the Digital Event Type.</li> </ol>
<b>Documents</b>	objectTypes.xml, objectTypes.xsd

## 3.16 Adapt interface appearance

You can adjust the interface appearance of ARIS Risk and Compliance to provide a customized look and to upgrade custom client-side behavior. The following adjustments can be made:

- Replacing images and icons
- Including additional CSS files to modify the presentation of the HTML interface
- Including additional JavaScript files to modify the client-side behavior

### 3.16.1 Include CSS files

The design of the HTML interface can be modified by including CSS style sheets. The custom style sheets are inserted after the default style sheets. For the custom style sheet to take effect, the included rule sets must have selectors that are as precise as the default ones. These files are added to all pages.

Location	XML file in the xml folder
Procedure	<ol style="list-style-type: none"> <li>1. Copy the <b>&lt;includesGlobal&gt;</b> element from default configuration to customizing.</li> <li>2. Create one or more <b>&lt;globalStyle&gt;</b> elements within the <b>&lt;includesGlobal&gt;</b> element.</li> <li>3. Move style sheets to folder <b>\design\custom\css</b> and images to folder <b>\design\custom\images</b>.</li> <li>4. Modify attributes of <b>&lt;globalStyle&gt;</b> to match the style sheet's name.</li> </ol>
Documents	<b>globalstaticresources.xml, globalstaticresources.xsd</b>
Remark	In some cases, images and icons are embedded in the interface with style sheets. To replace these resources, overwrite the existing CSS rule and include the new image.
Example	AddCustomUIHeader \WEB-INF\config\custom\xml\logo.xml: Change interface

### 3.16.2 Include JavaScript files

In some cases, the client-side behavior of ARIS Risk and Compliance is modified as part of a customization. For that purpose, JavaScript file can be added to the scope. The custom script files are included after the default ones, meaning that they can override previously defined objects and methods. These files are added to all pages.

Location	XML file in the xml folder
Procedure	<ol style="list-style-type: none"> <li>1. Copy the <b>&lt;includesGlobal&gt;</b> element from the default configuration to the customizing file.</li> <li>2. Create one or more <b>&lt;globalScript&gt;</b> elements within the <b>&lt;includesGlobal&gt;</b> element.</li> <li>3. Move JavaScript files to folder <b>\js\custom\</b>.</li> <li>4. Modify attributes of <b>&lt;globalScript&gt;</b> to match the file's name.</li> </ol>
Documents	<b>globalstaticresources.xml, globalstaticresources.xsd</b>
Example	AddCustomUIHeader \WEB-INF\config\custom\xml\logo.xml: Change interface

### 3.16.3 Exchange images and icons

All default images and icons of ARIS Risk and Compliance are embedded into CSS files and placed on the page during the rendering process of the browser. They can be replaced by a custom CSS file.

Location	XML file in the xml folder
Procedure	<ol style="list-style-type: none"> <li>1. Perform the procedure described in Include CSS files (Page 96).</li> <li>2. Copy the image or icon you want to replace to the folder <b>\design\custom\images</b>.</li> <li>3. Add a new CSS rule to the previously included CSS file. Use the same selector used on the web page.</li> <li>4. Use the <b>background</b> property of the CSS rule to refer to the image or icon.</li> </ol>
Documents	<b>globalstaticresources.xml, globalstaticresources.xsd</b>
Example	UIAddNewIcon \WEB-INF\config\custom\xml\custom.xml: Change interface



## 4 Migration costs and risks of customizing

Customizing only applies to the specific version number of ARIS Risk and Compliance for which it was implemented. Therefore, customers cannot update to a more recent service or main release of ARIS Risk and Compliance without also updating the customizing. The following steps must be performed each time you update to a more recent version:

### UPDATE THE VERSION NUMBER AT CUSTOMIZING

To enable the new server to use the customizing, you must update the **<version>** element. Otherwise, the server cannot use the customizing based on an older ARIS Risk and Compliance version. For detailed information, refer to Adapt the XML configuration (Page 2).

### UPDATE OUTDATED CUSTOMIZED ELEMENTS

Customizing is usually based on overwriting existing elements to meet customer requirements and removing redundant standard functions. The overwritten elements must be checked and, if necessary, migrated or updated with the latest standard fixes and improvements. To obtain a list of all customized items that must be reviewed, use the ANT task **Customizing migration: find outdated elements**. For detailed information on how to run this task, refer to the CTK documentation chapter **Usage of the ANT Toolkit**.

### ADD DATABASE MIGRATION STEPS FOR CUSTOM-ATTRIBUTES

If the customizing attribute at the **<version>** element was modified for customizing, the database schema is no longer a standard database schema. (For detailed information, refer to Overwrite the schema version (Page 23).). Therefore, the database migration must be enhanced to process the custom schema changes. For detailed information on how to implement migration steps, refer to CTK documentation chapter **Implementing custom database migration steps**.

Due to these time-consuming steps to update a customized ARIS Risk and Compliance installation, the advantages and disadvantages of customizing must be reviewed with the customer.

## 4.1 Costs and effort of customizing migration

The cost of the migration depends on the number of overwritten XML elements in the standard configuration and on the classes implemented according to customer requirements. If the customizing attribute at the **<version>** element is required in custom XML files, the database must be migrated in order to use the customizing in a new ARIS Risk and Compliance version. (For detailed information, refer to [Overwrite the schema version \(Page 23\)](#).) To avoid a database migration, customizing of attributes and object types should not be supported. If attributes are not customized, the database is migrated automatically to the new version. Please note that the migration of user-defined data must be performed and tested very carefully.

## 4.2 Risks of customizing

Customers must be aware of migration costs and effort if an upgrade to a more recent service or main release is required. Customizing that cannot be easily migrated is a risk if migration to a new ARIS version is required. Examples:

- The customer wants to use new features of other ARIS products.
- The customer must update because of the vulnerability in third party product, an ARIS product, or an ARIS service.
- The customer has an installation that is hosted by Software AG. They are automatically updated to the latest version with each service release twice a year, in April and October.

## 5 Technical help

### USER MANUALS OF ARIS RISK AND COMPLIANCE

- The following manuals are now available in the **Technical Help of ARIS Risk and Compliance**:

- **ARCM - Installation Guide**
- **ARCM - Upgrade Guide**
- **ARCM - Customizing Guide**
- **ARCM - Data Migration Guide for Customized Versions**

You can also find them as PDF in the documents folder on your installation media.

- The contents of the following manuals are now available in the online help of ARIS Risk and Compliance:
  - **Modeling Conventions**
  - **Semantics verifications**
  - **Administration**
- The content of **Confirmation Management Dashboard Installation** manual can now be found in the online help of ARIS under **Work with content > Confirmations > 'Confirmation management' dashboard**.

### ADDITIONAL INFORMATION

For more information about ARIS, such as manuals, technical help, and compendiums, see **Additional information** in the online help of ARIS.

## 6 Legal information

### 6.1 Documentation scope

The information provided describes the settings and features as they were at the time of publishing. Since documentation and software are subject to different production cycles, the description of settings and features may differ from actual settings and features. Information about discrepancies is provided in the Release Notes that accompany the product. Please read the Release Notes and take the information into account when installing, setting up, and using the product.

If you want to install technical and/or business system functions without using the consulting services provided by Software AG, you require extensive knowledge of the system to be installed, its intended purpose, the target systems, and their various dependencies. Due to the number of platforms and interdependent hardware and software configurations, we can describe only specific installations. It is not possible to document all settings and dependencies.

When you combine various technologies, please observe the manufacturers' instructions, particularly announcements concerning releases on their Internet pages. We cannot guarantee proper functioning and installation of approved third-party systems and do not support them. Always follow the instructions provided in the installation manuals of the relevant manufacturers. If you experience difficulties, please contact the relevant manufacturer.

If you need help installing third-party systems, contact your local Software AG sales organization. Please note that this type of manufacturer-specific or customer-specific customization is not covered by the standard Software AG software maintenance agreement and can be performed only on special request and agreement.

### 6.2 Support

If you have any questions on specific installations that you cannot perform yourself, contact your local Software AG sales organization (<https://empower.softwareag.com/Products/default.aspx>). To get detailed information and support, use our Web sites.

If you have a valid support contract, you can contact **Global Support ARIS** at: **+800 ARISHELP**. If this number is not supported by your telephone provider, please refer to our Global Support Contact Directory.

For issues regarding the product documentation, you can also send a mail to [documentation@softwareag.com](mailto:documentation@softwareag.com) (<mailto:documentation@softwareag.com>).

### ARIS COMMUNITY

Find information, expert articles, issue resolution, videos, and communication with other ARIS users. If you do not yet have an account, register at ARIS Community.

### PRODUCT DOCUMENTATION

You can find the product documentation on our documentation Web site (<https://documentation.softwareag.com>).

You can use numerous links on the TECHcommunity Web site. For any questions, you can find a local or toll-free number for your country in our Global Support Contact Directory and give us a call.

### TECHCOMMUNITY

On the **TECHcommunity** Web site, you can find documentation and other technical information:

- Use the online discussion forums, moderated by Software AG professionals, to ask questions, discuss best practices, and learn how other customers are using Software AG technology.
- Access articles, code samples, demos, and tutorials.
- Find links to external Web sites that discuss open standards and web technology.
- Access product documentation, if you have **TECHcommunity** credentials. If you do not, you will need to register and specify **Documentation** as an area of interest.

### EMPOWER (LOGIN REQUIRED)

If you have an account for **Empower**, use the following sites to find detailed information or get support:

- You can find product information on the Software AG Empower Product Support Web site.
- To get information about fixes and to read early warnings, technical papers, and knowledge base articles, go to the Knowledge Center.
- Once you have an account, you can open Support Incidents online via the eService section of Empower.
- To submit feature/enhancement requests, get information about product availability, and download products, go to Products.

### FURTHER INFORMATION AND TRAININGS

Learn from your laptop computer, tablet or smartphone.