



ARIS

MIGRATING WEB SERVICES FROM ARIS 7.2

Version 10.0 - Service Release 5

July 2018

Document content not changed since release 10.0.1. It applies to version 10.0.5 without changes.

This document applies to ARIS Version 10.0 and to all subsequent releases.

Specifications contained herein are subject to change and these changes will be reported in subsequent release notes or new editions.

Copyright © 2010 - 2018 [Software AG](#), Darmstadt, Germany and/or [Software AG](#) USA Inc., Reston, VA, USA, and/or its subsidiaries and/or its affiliates and/or their licensors.

The name [Software AG](#) and all Software AG product names are either trademarks or registered trademarks of [Software AG](#) and/or [Software AG](#) USA Inc. and/or its subsidiaries and/or its affiliates and/or their licensors. Other company and product names mentioned herein may be trademarks of their respective owners.

Detailed information on trademarks and patents owned by Software AG and/or its subsidiaries is located at <http://softwareag.com/licenses>.

Use of this software is subject to adherence to Software AG's licensing conditions and terms. These terms are part of the product documentation, located at <http://softwareag.com/licenses> and/or in the root installation directory of the licensed product(s).

This software may include portions of third-party products. For third-party copyright notices, license terms, additional rights or restrictions, please refer to "License Texts, Copyright Notices and Disclaimers of Third Party Products". For certain specific third-party license restrictions, please refer to section E of the Legal Notices available under "License Terms and Conditions for Use of Software AG Products / Copyright and Trademark Notices of Software AG Products".

These documents are part of the product documentation, located at <http://softwareag.com/licenses> and/or in the root installation directory of the licensed product(s).

Contents

| | | |
|-----|---|---|
| 1 | Legal notices | 1 |
| 2 | Text conventions..... | 2 |
| 3 | Migrate web services from ARIS version 7.2 to ARIS version 10.0 | 3 |
| 4 | Exporting web service out of ARIS 7.2 | 4 |
| 4.1 | Exporting web services out of ARIS..... | 4 |
| 4.2 | Exporting an XML schema out of ARIS..... | 5 |
| 5 | Importing services into CentraSite | 6 |
| 5.1 | Importing a web service to CentraSite..... | 6 |
| 5.2 | Importing an XML schema to CentraSite..... | 8 |
| 6 | Importing web services from CentraSite..... | 9 |

1 Legal notices

This manual describes the settings and features as they were at the time of print. Since manual and software are subject to different production cycles, the description of settings and features may differ from actual settings and features. Information about discrepancies is provided in the Readme file that accompanies the product. Please read this file and take the information into account when installing, setting up, and using the product.

If you want to install all technical and/or business system functions without the services of Software AG, you require extensive knowledge of the system to be installed, its intended purpose, the target systems, and their various dependencies. Due to the number of platforms and interdependent hardware and software configurations, we can only describe specific installations. It is not possible to document all settings and dependencies.

When you combine various technologies, please observe the manufacturers' instructions, particularly announcements concerning releases on their Internet pages. We cannot guarantee proper functioning and installation of approved third-party systems and do not support them. Always follow the instructions provided in the installation manuals of the relevant manufacturers. If you experience difficulties, please contact the relevant manufacturer.

If you need help installing third-party systems, contact your local Software AG sales organization. Please note that this type of manufacturer-specific or customer-specific customizing is not subject to the standard Software AG software maintenance agreement and can be performed only on special request and agreement.

If a description refers to a specific ARIS product, the product is named. If this is not the case, names for ARIS products are used as follows:

| Name | Includes |
|-----------------------|---|
| ARIS products | Refers to all products to which the license regulations of Software AG standard software apply. |
| ARIS clients | Refers to all programs, e.g., ARIS Architect or ARIS Designer that access shared databases via ARIS Server. |
| ARIS Download Clients | Refers to ARIS clients that can be started from a browser. |

2 Text conventions

Menu items, file names, etc. are indicated in texts as follows:

- Menu items, key combinations, dialogs, file names, entries, etc. are displayed in **bold**.
- User-defined entries are shown **<in bold and in angle brackets>**.
- Single-line example texts (e.g., a long directory path that covers several lines due to a lack of space) are separated by ↵ at the end of the line.
- File extracts are shown in this font format:
This paragraph contains a file extract.
- Warnings have a colored background:

Warning

This paragraph contains a warning.

3 Migrate web services from ARIS version 7.2 to ARIS version 10.0

Web services used in ARIS version 7.2 can be migrated for further usage in ARIS 10.0.

Web services serve as a universal system for communication between applications and services. By specifying the interactions and sequence of Web services, integrated, service-oriented systems that can reflect and process business management requirements on the basis of company processes are created from the basic modules of Web services.

Both ARIS 7.2 and an ARIS 10.0 must be installed.

A CentraSite server must be installed because CentraSite is used as a repository for the web services.

You first have to export the services from ARIS version 7.2 (page 4), then, you have to import the web services into CentraSite (page 6).

After that, you have to import the services to ARIS 10.0.

4 Exporting web service out of ARIS 7.2

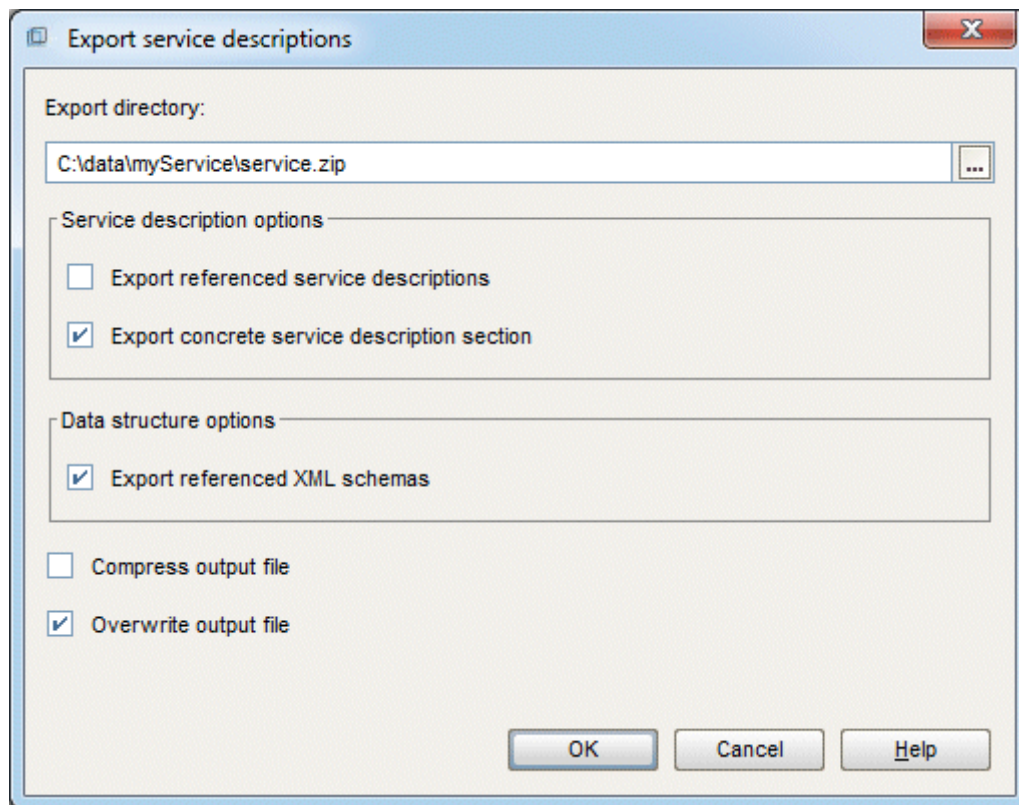
Export the web services from ARIS 7.2 and save them as WSDL files.

4.1 Exporting web services out of ARIS

Export software services as an XML-based WSDL file.

Procedure

1. Select a software service, a model that contains the software service, or a group in which the software service you want to export is saved.
2. Select **File > Export > Service description**.
3. The dialog for exporting the service opens. Define the relevant settings and click **OK**.



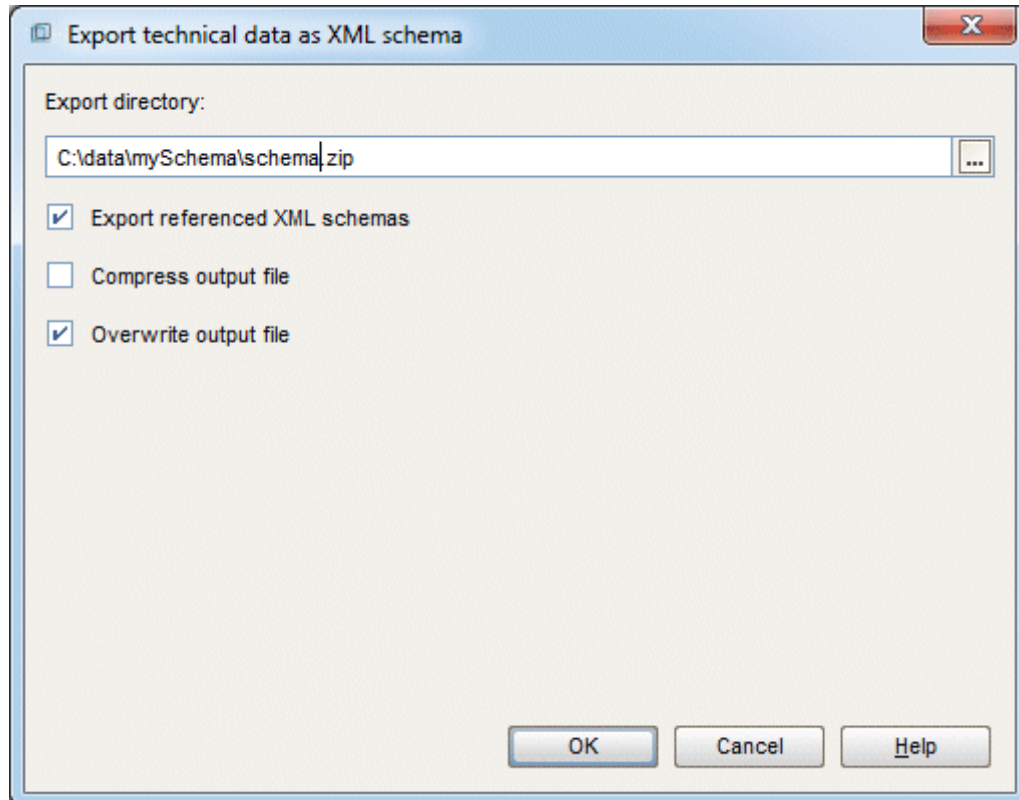
The web service is exported to a WSDL file. Any related data - e.g. XML schemas - is also exported.

4.2 Exporting an XML schema out of ARIS

Export an XML schema definition as an XML-based file.

Procedure

1. Select an XML schema definition or the group that contains the XML schema definition you want to export.
2. Select **File > Export > Data structures**. The dialog for exporting an XML schema opens. Define the relevant settings and click **OK**.



The XML schema is exported to an XSD file.

5 Importing services into CentraSite

Import the WSDL file based services to your CentraSite server.

5.1 Importing a web service to CentraSite

You can import one or more web services from a web server or a file system to a CentraSite registry and repository. For the import, you must specify a WSDL file that may define one or more web services.

You can update web services in CentraSite by importing an updated WSDL file. The WSDL file must have the same namespace, service names, and organization as the original WSDL file. It may also include additional web services. However, it is not possible to remove a service from CentraSite via an updated WSDL file that no longer includes the corresponding service element.

Please note that the import will fail if you specify a WSDL file containing a namespace and services that already exist in CentraSite but are affiliated to a different organization.

Procedure

1. Start CentraSite and log in.
2. Click **Create Asset**.
3. Select **Service** from the **Type** list.
 - a. Optional: Enter a name.
 - b. Optional: Select the organization to which the web services are to be assigned.
 - c. Optional: Specify a version identifier for the new service. The version identifier you enter here is the service's public, user-assigned version identifier. You can enter any string in the Initial version field, i.e. the version identifier does not need to be numeric. You can also leave this field blank.
 - d. Optional: Enter a Description.
4. Enable **File** in the **Import a File** section.
5. Click **Choose**.
6. Select the WSDL file you want to import.
7. Click **Next**.

In case you imported a new web service, CentraSite retrieves the specified file and creates the web service.

If the importer detects that the service you are trying to import already exists within CentraSite, the import dialog will prompt you to specify whether you want to **Create asset**, **Always overwrite** or **Always create new versions** and click **Next**.

The following registry objects and folders and files are created by the import of web services:

- In the registry, objects are created for different elements defined in the WSDL file being imported: An object of the service type is created for each **Service** element defined in the WSDL file. The corresponding name attribute in the WSDL file determines the registry

object's name. The **Service** objects are assigned to the organization which you specify in the import parameters. A corresponding **Organization** object is created, if required.

Depending on the WSDL file, additional objects of the following types may be created:

ServiceBinding objects for service bindings, **SpecificationLink** objects for specification links, **Concept** objects for bindings, **Operation** objects for operations, **Interface** objects for interfaces, **BPELPartnerLinkType** objects for partnerLinkType elements in the WSDL file, **BPELRole** objects for role elements within partnerLinkType elements. The new objects are connected by associations and implicit references as required.

- For each imported web service, an external link is created, which points to the WSDL file in the repository.
- The WSDL file is copied to a subfolder of **projects/WSDL** in the repository.

The name of the subfolder is determined by the namespace defined in the **targetNamespace** attribute of the WSDL's definition element. For example, if the namespace is **http://www.MyOrganization.com/products**, the WSDL file is copied to **projects/WSDL/www.MyOrganization.com/products**.

The name of the WSDL file in the repository is built as follows:

organization_service_file.wsdl, where organization is the organization name you specify in the import parameters, service is the name of the service as specified in the WSDL, and file is the file name or final part of the URL specified in the import parameters. For example, when you import a web service from **C:\services\MyService.wsdl**, the service name in the WSDL file is **queryService**, and the specified organization is **MyOrg**, the resulting file name in the repository is **MyOrg_queryService_MyService.wsdl**.

- If the WSDL file contains references to schema files, these are also imported, including all of the schema files that are referenced. The folders and files and registry objects that are created correspond to importing an XML schema.

5.2 Importing an XML schema to CentraSite

You can import an XML schema from a Web server or a file system to a CentraSite registry and repository.

Procedure

1. Start CentraSite and log in.
2. Click **Create Asset**.
3. Select **XML schema** from the **Type** list.
 - a. Optional: Enter a name.
 - b. Optional: Select the organization to which the web services are to be assigned.
 - c. Optional: Specify a version identifier for the new service. The version identifier you enter here is the service's public, user-assigned version identifier. You can enter any string in the Initial version field, i.e. the version identifier does not need to be numeric. You can also leave this field blank.
 - d. Optional: Enter a Description.
4. Enable **File** in the **Import a File** section.
5. Click **Choose**.
6. Select the XML schema file you want to import.
7. Click **Next**.
8. Click **Save**.

CentraSite retrieves the specified file and creates the XML schema.

If the importer detects that the schema you are trying to import already exists within CentraSite, the import dialog will prompt you to specify whether you want to **Always create new versions** or **Always overwrite**.

The following folders and files and registry objects are created by the import of an XML schema:

- The schema file is copied to a subfolder of **projects/WSDL** in the repository. The name of the subfolder is determined by the namespace defined in the schema. For example, if the namespace is **http://www.MyOrganization.com/MySchemas/schema1**, the schema is copied to **projects/WSDL/www.MyOrganization.com/MySchemas/schema1**.
- If the schema file contains references to other schema files, these are also imported, including all the schema files that are referenced.
- For each imported schema file, a registry object of the XML Schema type is created. An external link is created for the object that points to the schema file in the repository.

When you delete an external link in the registry that points to a schema file in the repository, the schema file in the repository is also deleted. However, any schema entries in the registry and repository that are referenced by the schema being deleted remain untouched.

Configuring a CentraSite connection for ARIS

Please refer to the topic **Configure CentraSite connection** of the ARIS Architect online help.

6 Importing web services from CentraSite

Please refer to the topic **Import services from CentraSite** of the ARIS Architect online help.