

# Introduction to Apama

Version 9.10

August 2016

This document applies to Apama Version 9.10 and to all subsequent releases.

Specifications contained herein are subject to change and these changes will be reported in subsequent release notes or new editions.

Copyright © 2013-2016 Software AG, Darmstadt, Germany and/or Software AG USA Inc., Reston, VA, USA, and/or its subsidiaries and/or its affiliates and/or their licensors.

The name Software AG and all Software AG product names are either trademarks or registered trademarks of Software AG and/or Software AG USA Inc. and/or its subsidiaries and/or its affiliates and/or their licensors. Other company and product names mentioned herein may be trademarks of their respective owners.

Detailed information on trademarks and patents owned by Software AG and/or its subsidiaries is located at <http://softwareag.com/licenses>.

Use of this software is subject to adherence to Software AG's licensing conditions and terms. These terms are part of the product documentation, located at <http://softwareag.com/licenses> and/or in the root installation directory of the licensed product(s).

This software may include portions of third-party products. For third-party copyright notices, license terms, additional rights or restrictions, please refer to "License Texts, Copyright Notices and Disclaimers of Third Party Products". For certain specific third-party license restrictions, please refer to section E of the Legal Notices available under "License Terms and Conditions for Use of Software AG Products / Copyright and Trademark Notices of Software AG Products". These documents are part of the product documentation, located at <http://softwareag.com/licenses> and/or in the root installation directory of the licensed product(s).

# Table of Contents

<b>About this Guide.....</b>	<b>7</b>
Documentation roadmap.....	7
Online Information.....	9
Contacting customer support.....	10
<b>Apama Overview.....</b>	<b>11</b>
What is Apama?.....	12
Understanding the different user viewpoints.....	14
About Apama license files.....	16
Running Apama without a license file.....	17
Software AG Knowledge Center.....	18
<b>Apama Architecture.....</b>	<b>21</b>
Distinguishing architectural features.....	22
How Apama integrates with external data sources.....	23
Descriptions of Apama components.....	26
Description of the Apama correlator.....	26
Description of event processing languages.....	27
Introduction to Apama EPL.....	27
Introduction to Apama in-process API for Java (JMon).....	30
Description of Software AG Designer.....	31
Description of Query Designer.....	32
Description of Event Modeler.....	32
Description of Dashboard Builder and Dashboard Viewer.....	33
Description of client development kits.....	33
Description of Management and Monitoring Console.....	34
Description of Apama's Data Player.....	35
How the correlator works.....	35
<b>Apama Concepts.....</b>	<b>41</b>
Event-driven programming.....	42
Complex event processing.....	43
Understanding monitors and listeners.....	44
Understanding queries.....	46
Architectural comparison of queries and monitors.....	48
Understanding scenarios and blocks.....	49
Understanding dashboards.....	51
<b>Getting Ready to Develop Apama Applications.....</b>	<b>53</b>
Becoming familiar with Apama.....	54
Introduction to Software AG Designer.....	54
Steps for developing Apama applications.....	56

Overview of starting, testing and debugging applications.....	57
<b>Apama Glossary.....</b>	<b>59</b>
action.....	62
activation.....	62
adapter.....	62
aggregate function.....	62
batch.....	62
block.....	62
bundle.....	63
.cdp.....	63
CEP.....	63
channel.....	63
connectivity plug-in.....	63
context.....	63
correlator.....	64
correlator deployment package.....	64
correlator-integrated messaging for JMS.....	64
.csv.....	64
current events.....	64
custom blocks.....	64
dashboard.....	65
Dashboard Builder.....	65
dashboard data server.....	65
dashboard display server.....	65
Dashboard Viewer.....	65
Data Player.....	65
data view.....	66
EDA.....	66
EPL.....	66
event.....	66
event collection.....	66
event listener.....	66
Event Modeler.....	67
event pattern.....	67
event template.....	67
.evt.....	67
exception.....	67
IAF.....	67
Integration Adapter Framework (IAF).....	68
JMon.....	68
latest event.....	68
listener.....	68
lot.....	68
Management and Monitoring.....	68

match set.....	68
MemoryStore.....	69
.mon.....	69
monitor.....	69
MonitorScript.....	69
parameterization.....	69
parameters.....	69
partition.....	70
partitioning.....	70
plug-in.....	70
.qry.....	70
query.....	70
query aggregate.....	70
Query Designer.....	70
query input definition.....	71
query instance.....	71
query key.....	71
query window.....	71
range.....	71
.rtv.....	71
scenario.....	72
.sdf.....	72
sentinel agent.....	72
simulation.....	72
SmartBlock.....	72
Software AG Designer.....	72
stack trace element.....	72
standard blocks.....	73
stream.....	73
stream listener.....	73
stream network.....	73
stream query.....	73
stream source template.....	73
Web Services Client adapter.....	74
window.....	74
within clause.....	74
without clause.....	74



## About this Guide

---

This guide is for new Apama users. It provides a high-level overview of Apama, describes the Apama architecture, discusses Apama concepts and introduces Software AG Designer, which is the main development tool for Apama.

## Documentation roadmap

---

Apama provides documentation in the following formats:

- HTML (viewable in a web browser)
- PDF (available from the documentation website)
- Eclipse help (accessible from the Software AG Designer)

You can access the HTML documentation on your machine after Apama has been installed:

- **Windows.** Select **Start > All Programs > Software AG > Tools > Apama *n.n* > Apama Documentation *n.n***. Note that **Software AG** is the default group name that can be changed during the installation.
- **UNIX.** Display the `index.html` file, which is in the `doc` directory of your Apama installation directory.

The following table describes the different guides that are available.

Title	Description
<i>Release Notes</i>	Describes new features and changes since the previous release.
<i>Installing Apama</i>	Instructions for installing Apama.
<i>Introduction to Apama</i>	Introduction to developing Apama applications, discussions of Apama architecture and concepts, and pointers to sources of information outside the documentation set.
<i>Using Apama with Software AG Designer</i>	Instructions for using Apama to create and test Apama projects, develop EPL programs, define Apama queries, develop JMon programs, and store, retrieve and play back data.
<i>Developing Apama Applications</i>	Describes the different technologies for developing applications: EPL monitors, Apama queries, Event

Title	Description
	<p>Modeler, and Java. You can use one or several of these technologies to implement a single Apama application. In addition, there are C++, C, and Java APIs for developing components that plug in to a correlator. You can use these components from EPL.</p>
<i>Connecting Apama Applications to External Components</i>	<p>Describes how to connect Apama applications to any event data source, database, messaging infrastructure, or application. The general alternatives for doing this are as follows:</p> <ul style="list-style-type: none"><li>■ Implement standard Apama Integration Adapter Framework (IAF) adapters.</li><li>■ Create applications that use correlator-integrated messaging for JMS or Software AG's Universal Messaging.</li><li>■ Use connectivity plug-ins written in Java or C++.</li><li>■ Develop adapters with Apama APIs for Java and C++.</li><li>■ Develop client applications with Apama APIs for Java, .NET, and C++.</li></ul>
<i>Building and Using Dashboards</i>	<p>Describes how to build and use an Apama dashboard, which provides the ability to view and interact with scenarios and DataViews. An Apama project typically uses one or more dashboards, which are created in the Dashboard Builder. The Dashboard Viewer provides the ability to use dashboards created in Dashboard Builder. Dashboards can also be deployed as simple Web pages, applets, or WebStart applications. Deployed dashboards connect to one or more correlators by means of a Dashboard Data Server or Display Server.</p>
<i>Deploying and Managing Apama Applications</i>	<p>Describes how to deploy components with Command Central or with Apama's Enterprise Management and Monitoring (EMM) console. Also provides information for:</p> <ul style="list-style-type: none"><li>■ Improving Apama application performance by using multiple correlators and saving and reusing a snapshot of a correlator's state.</li></ul>



Title	Description
	<ul style="list-style-type: none"><li>■ Managing and monitoring over REST (Representational State Transfer).</li><li>■ Using correlator utilities.</li></ul>

In addition to the above guides, Apama also provides the following API reference information:

- API Reference for EPL in ApamaDoc format
- API Reference for Java in Javadoc format
- API Reference for C++ in Doxygen format
- API Reference for .NET in HTML format

## Online Information

---

### Software AG Documentation Website

You can find documentation on the Software AG Documentation website at <http://documentation.softwareag.com>. The site requires Empower credentials. If you do not have Empower credentials, you must use the TECHcommunity website.

### Software AG Empower Product Support Website

You can find product information on the Software AG Empower Product Support website at <https://empower.softwareag.com>.

To submit feature/enhancement requests, get information about product availability, and download products, go to [Products](#).

To get information about fixes and to read early warnings, technical papers, and knowledge base articles, go to the [Knowledge Center](#).

### Software AG TECHcommunity

You can find documentation and other technical information on the Software AG TECHcommunity website at <http://techcommunity.softwareag.com>. You can:

- Access product documentation, if you have TECHcommunity credentials. If you do not, you will need to register and specify "Documentation" as an area of interest.
- Access articles, code samples, demos, and tutorials.
- Use the online discussion forums, moderated by Software AG professionals, to ask questions, discuss best practices, and learn how other customers are using Software AG technology.
- Link to external websites that discuss open standards and web technology.

## Contacting customer support

---

If you have an account, you may open Apama Support Incidents online via the eService section of Empower at <https://empower.softwareag.com/>. If you do not yet have an account, send an email to [empower@softwareag.com](mailto:empower@softwareag.com) with your name, company, and company email address and request an account.

If you have any questions, you can find a local or toll-free number for your country in our Global Support Contact Directory at [https://empower.softwareag.com/public\\_directory.asp](https://empower.softwareag.com/public_directory.asp) and give us a call.

# 1 Apama Overview

---

■ What is Apama? .....	12
■ Understanding the different user viewpoints .....	14
■ About Apama license files .....	16
■ Running Apama without a license file .....	17
■ Software AG Knowledge Center .....	18

In addition to reading this *Introduction to Apama*, it is recommended that you do the following to become familiar with Apama:

- Work through the Apama tutorials in Software AG Designer. From the **Help** menu, choose **Welcome** to display the Welcome page, and then click **Tutorials** under the **Apama** heading. This displays links to interactive tutorials that provide step-by-step instructions for writing simple Apama applications that you can then run and monitor.
- Look at the Apama demos in Software AG Designer. Click **Demos** under the **Apama** heading on the above-mentioned Welcome page.
- Use the skills you learned in the tutorials to try modifying the demos as suggested in their readme files.

There are a number of approaches for developing Apama applications:

- **EPL.** Apama's Event Processing Language (EPL) is designed for developing event processing applications. This approach is for programmers who need a powerful event processing language.
- **Apama queries.** Apama queries are useful when you want to monitor incoming events that provide information updates about a very large set of real-world entities such as credit cards, bank accounts, cell phones. Typically, you want to independently examine the set of events associated with each entity, that is, all events related to a particular credit card account, bank account, or cell phone. A query application operates on a huge number of independent sets with a relatively small number of events in each set.
- **Apama in-process API for Java (JMon).** Apama's JMon interface lets programmers use the industry standard Java programming language to develop event processing applications.
- **Event Modeler.** Apama's GUI for creating event processing applications is for non-programmers or for programmers who want to do rapid application development.

Depending on what you are trying to accomplish, you can use as many approaches as required in a single Apama application.

## What is Apama?

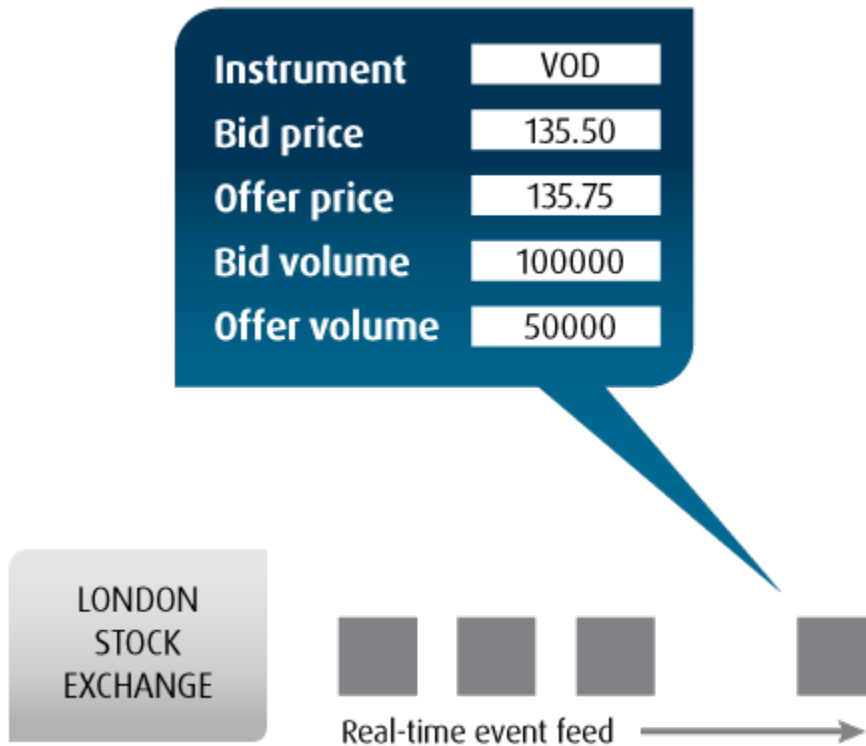
---

Apama is an event processing platform. It monitors rapidly moving event streams, detects and analyzes important events and patterns of events, and immediately acts on events of interest according to your specifications.

Event-based applications differ from traditional applications in that rather than continuously executing a sequence of instructions, they listen for and respond to relevant events. Events describe changes to particular real-world or computer-based objects, for example a new bid price for Vodafone's stock on the London Stock Exchange.

Events are collections of attribute-value pairs that describe a change in an object. For example, the figure below shows stock quote events. Each stock quote has a number of

attributes, including current bid price, current offer price, and current volumes. In the figure, the highlighted event shows the latest quote for Vodafone stock.



The attributes, or fields, of an individual event class may be of a variety of types, including numerical and textual data. Events with multiple fields can be viewed as multi-dimensional types, in that a search to find an event of interest might involve searching across several of the event fields.

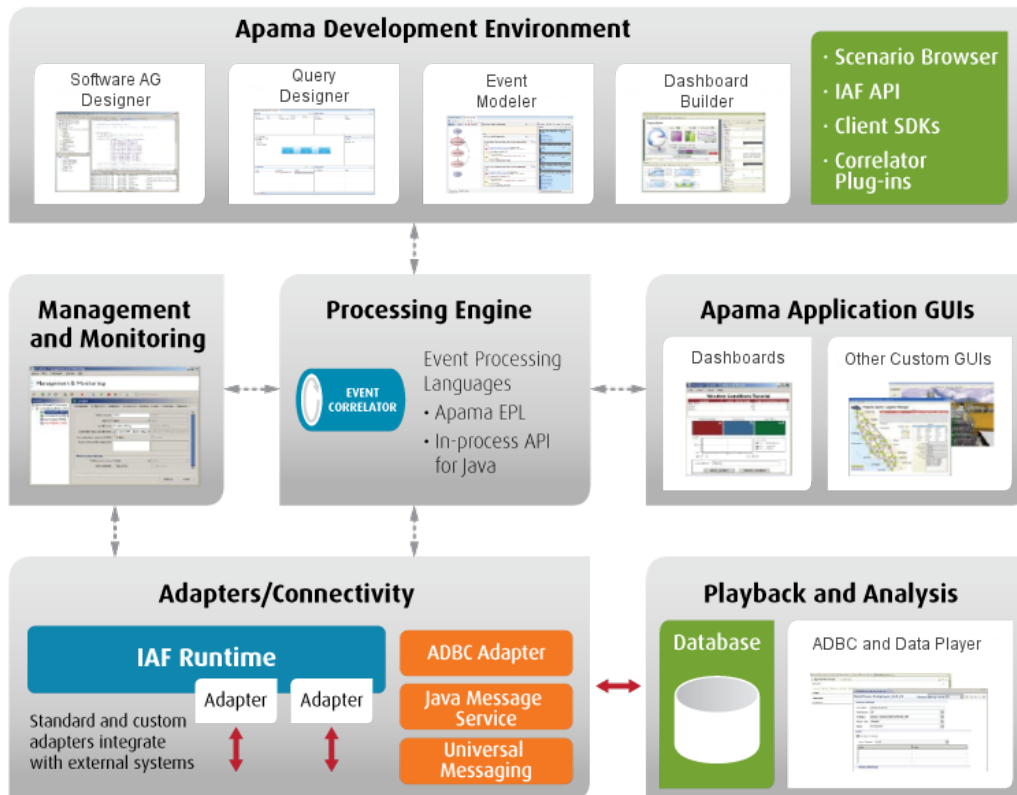
Rather than executing a sequence of activities at some defined point, an event-based system waits and responds appropriately to an asynchronous signal as soon as it happens. In this way, the response is as immediate (or real-time) as possible.

The main Apama features include:

- Graphical development tools accessible to business users.
- EPL, which is a concise, richly-featured event processing language.
- The connectivity plug-in API, which allows in-correlator integration with external data sources of varying formats.
- Integration Adapter Framework (IAF), which provides easy integration to external event source and systems.
- Sophisticated analytics with native support for temporal arguments.
- Sub-second response to detected events and patterns of interest.

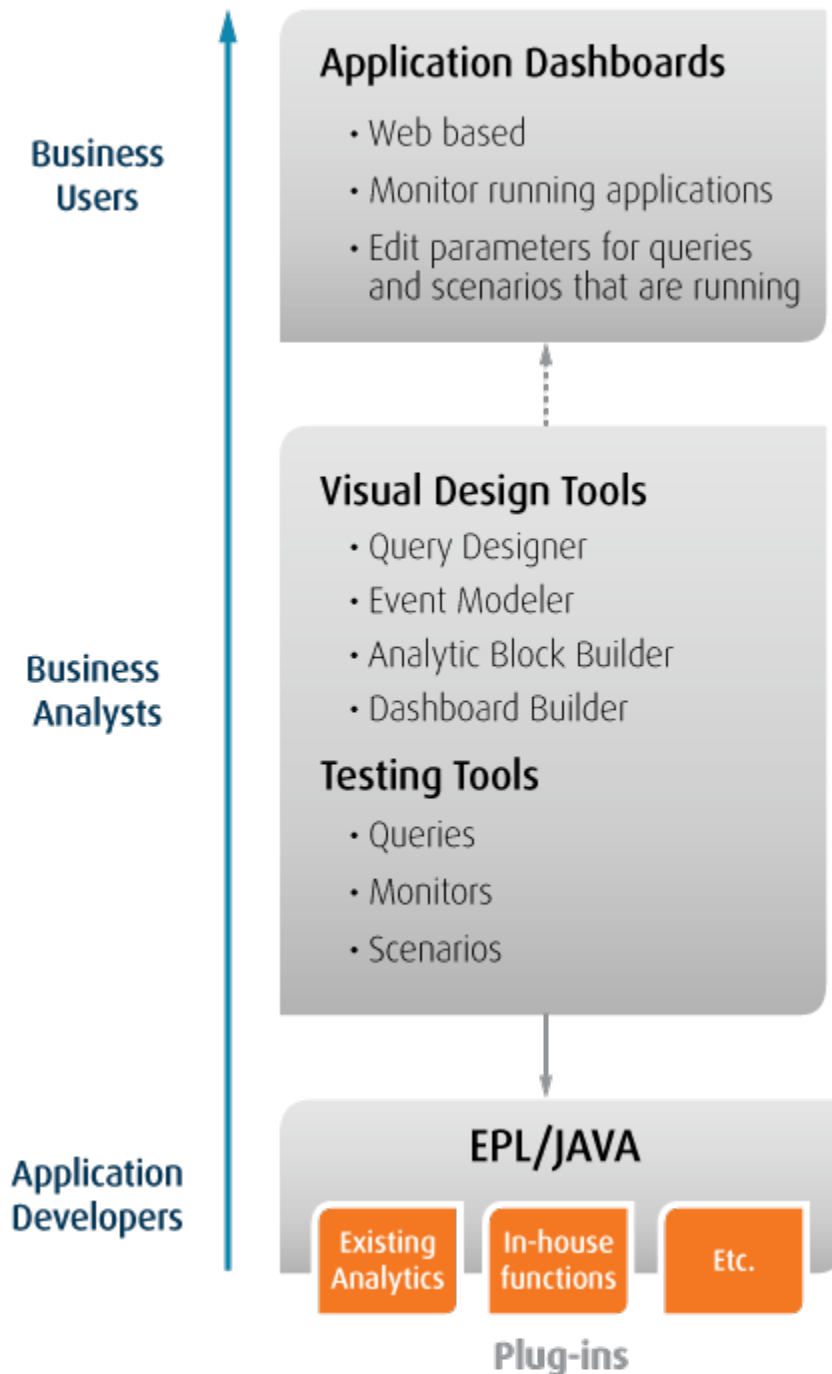
- Highly scalable, patented, event-driven architecture, supporting tens of thousands of concurrent scenarios.
- Integrated tools for creating visually appealing user dashboards.
- Flexible event replay for testing new event scenarios and analyzing existing ones.
- Tools for managing and monitoring your application.

The following functional diagram shows the main Apama features:



## Understanding the different user viewpoints

Apama has been designed for a range of users. The figure below shows the spectrum of users from application developers to business analysts to pure business users. Apama provides different facilities for each of these classes of user. After the initial design is set for an Apama application, multiple users can work concurrently to implement the design.



Application developers can make use of the full set of APIs and technologies within the Apama architecture to create sophisticated, custom, CEP solutions. Using Software AG Designer, they can create applications directly in EPL or Java. They can extend the capabilities of the Apama correlator with their own in-house analytic routines. Using the connectivity plug-in API or the Integration Adapter Framework (IAF), they can integrate with a new data service by developing a new adapter if one that can be plugged in does

not already exist. They can also take advantage of low-level APIs for building custom client user interfaces in C, C++, Java and .NET.

Business analysts are provided with GUI tools (Query Designer, Event Modeler, Analytic Block Builder, Dashboard Builder) to enable the creation of queries, scenarios and dashboards without having to write code. A query is a self-contained processing unit suitable for applications where the incoming events provide information updates about a very large set of real-world entities. A scenario is a sequence of event monitoring and event responses that constitutes a single business activity. A query or a scenario can be an application in its own right, or part of a bigger application. Both Query Designer and Event Modeler provide features for creating reusable application components (parameterized queries in Query Designer and smart blocks in Event Modeler).

Thus, there are several approaches to developing Apama applications. Your development team can use one, two, three or all four in an Apama application:

- **EPL.** Apama's native event processing language.
- **Queries.** Use EPL and the Query Designer GUI to create Apama query applications.
- **Java.** Apama provides an in-process API for Java (called JMon) for processing events.
- **Event Modeler.** Apama's GUI for creating event processing scenarios.

Pure business users are often only interested in the end-game application. The output of the Dashboard Builder GUI provides an immediately usable application for this purpose.

In addition, Apama provides management and monitoring tools for users whose primary responsibility is to configure, deploy and manage Apama applications.

## About Apama license files

---

Software AG supplies you with an Apama license file. Refer to the licencing terms specified in your software contract for any additional legal restrictions that may be imposed on your use of Apama.

A license file is required for the full functionality of Apama. The Software AG Installer will ask for it during the installation. See "About the installation process" in *Installing Apama* for further information.

It is possible to run Apama without a license file or with an expired license file. Apama behavior with regard to the Apama license file is as follows:

- When a license file cannot be found, the correlator will run with reduced capabilities. See ["Running Apama without a license file" on page 17](#).
- A correlator started with a license file does not shut down when its license expires. It continues operation for seven days beyond expiration. The correlator logs periodic warning messages until it reaches the end of the seven days or until you replace the expired license.



- Removing the license file from a running correlator does not cause it to shut down. It continues operation for seven days after the license file is removed. The correlator logs periodic warning messages until it reaches the end of the seven days or until you restore the license.
- You can start a correlator with an expired license if it is less than seven days beyond expiration.

If you obtain a license file after you have been running Apama, copy it to the `license` directory in your `APAMA_WORK` directory, for example: `C:\Users\Public\SoftwareAG\ApamaWork_n.n\license\ApamaServerLicense.xml` (where *n.n* stands for the current version number).

## Running Apama without a license file

---

Apama can be run without a license file in which case it runs with reduced capabilities and can be used for simple or exploratory use cases. Refer to "License Terms and Technical Restrictions" in the *Release Notes* for the current license terms and restrictions.

The following restrictions apply when starting the correlator without a license file:

- The correlator does not start more than 4 threads for EPL processing. The number of threads being used is logged. Up to 20 contexts may be created and all are runnable, but the correlator does not use more than 4 threads to execute EPL, limiting the correlator's performance.
- The correlator refuses to start if a distributed `MemoryStore` is enabled, and an error is logged indicating that the correlator is running without a license file.
- The correlator JMS is limited to `BEST_EFFORT` only messaging (unreliable). It refuses to connect using reliable modes (`EXACTLY_ONCE`, `AT_LEAST_ONCE` or `APP_CONTROLLED`).
- The correlator logs that it is running without a license file.

The following restrictions are enforced while the correlator is running and a license file cannot be found:

- The correlator is limited to 1024MB of resident memory. If 1024MB of memory is exceeded, the correlator is stopped and an error is logged indicating that the correlator is running without a license file. There is a warning if the resident memory exceeds 90% of the 1024MB limit - though if the correlator's memory increases very quickly, the limit may be hit before the 90% warning is logged.

Note that this limit also includes Java memory usage. It is recommended that you size your Java virtual machine to not consume too much memory. If you are using Java features, you may need to use `-J-Xmx256M` to limit the memory usage of your Java virtual machine to 256MB (or some suitable size less than 1024MB). Note that the memory usage may increase if a burst of events is received.

- The correlator does not allow more than 20 contexts to be created. The `spawn` statement throws an exception if it would create a new context and 20 contexts are

already created. In addition, a startup error occurs when recovering a persistent database with more than 20 contexts. Both the exception and the startup error indicate that the correlator is running without a license file.

- The correlator does not allow more than 5 persistent EPL monitors (this does not include monitor instances of persistent monitors). An error is logged if there are more than 5 persistent monitors.
- The correlator does not allow the injection of user-generated correlator deployment packages (CDPs). If a user-generated CDP is injected, the correlator rejects the injection and an error is logged indicating that the correlator is running without a license file.
- The correlator does not allow more than 5 query definitions to run and no more than 5 query instances per definition. When more than 5 query definitions are injected into the correlator, `CRIT` log messages are written.
- The query runtime drops events if there are already 50 different partition values for a query. When more than 50 partition values are sent in, `CRIT` log messages are written.
- If reliable JMS connections are requested dynamically, an exception is thrown which should be caught in EPL, and an error message is logged indicating that this configuration is not supported as the correlator is running without a license file.

The correlator info web page (<http://localhost:15903/info>) always shows you whether the correlator is currently running with or without a license file.

To find out if the above-mentioned limits have been exceeded, you can check the following:

- The correlator log file for most of the above-mentioned cases. See "Descriptions of correlator status log fields" in *Deploying and Managing Apama Applications*.
- The status messages of the `engine_watch` tool. See "Watching correlator runtime status" in *Deploying and Managing Apama Applications*.
- The `-a (--getall)` or `-Pm (--getpmemory)` option of the `engine_management` tool to get the physical memory usage. See "Shutting down and managing components" in *Deploying and Managing Apama Applications*.
- The scenario browser for status information on queries. See "Using the Scenario Browser view" in *Using Apama with Software AG Designer*.

## Software AG Knowledge Center

---

Use Software AG's Empower customer support portal to search the Knowledge Center, manage your Knowledge Center subscriptions, download products, view product version availability information, product documentation and more.

You may open Apama Support Incidents online via the eService section of Empower (<http://empower.softwareag.com>). If you are new to Empower, send an email to

`empower@softwareag.com` with your name, company, and company email address to request an account.

If you have any questions, you can find a local or toll-free number for your country in our Global Support Directory at [https://empower.softwareag.com/public\\_directory.asp](https://empower.softwareag.com/public_directory.asp) and give us a call.



## 2 Apama Architecture

---

■ Distinguishing architectural features .....	22
■ How Apama integrates with external data sources .....	23
■ Descriptions of Apama components .....	26
■ How the correlator works .....	35

Apama architecture has a modular, scalable design with core features that

- Monitor inbound events typically delivered by a messaging infrastructure or market data feed.
- Analyze those events in memory, either singly or in conjunction with other events whose attributes and temporal ordering represent a pattern.
- Trigger outbound events that represent an action to be taken in response to the analysis.

As you can see, Apama's architecture is designed to process events. Event processing requires an architecture that is fundamentally different from traditional data processing architectures. Because Apama's architecture is event driven, an understanding of the distinctive qualities of this architecture is crucial to designing and building robust Apama applications.

## Distinguishing architectural features

---

Apama inverts the paradigm of traditional data-centric systems. Rather than the store > index > search model of those architectures, Apama introduces the correlator — a real-time, event processing engine. An Apama application comprises monitors and/or Apama queries that specify the events or patterns of events that interest you. These specifications are the logical equivalent of database queries. After you load monitors and /or Apama queries into the correlator, incoming events flow over them and they monitor these event streams for the events and patterns you specified. When a matching event or pattern is found the correlator processes it according to the rules you specify.

Apama's architecture is further distinguished by its ability to support huge numbers of monitors and queries operating simultaneously. Each can have its own logic for monitoring the event streams, seeking out patterns and, upon detection, triggering specified actions.

The correlator supports two main programming languages: EPL and Java. EPL, Apama's native event programming language, lets developers define rules for processing complex events. Such rules let the correlator find temporal and causal relationships among events. Developers who prefer to program in Java can use the correlator's in-process API for Java (called JMon). In addition, the Event Modeler GUI lets non-programmers define scenarios for handling events. Event Modeler translates scenarios into monitors.

Messages on a variety of transports, such as an Enterprise Service Bus (ESB), carry events to and from event correlators. Apama adapters translate application-specific data into Apama application event formats that the correlator can process. For example, Apama trading systems integrate with various exchanges by means of adapters that translate between Apama and market data feeds or order management protocols.

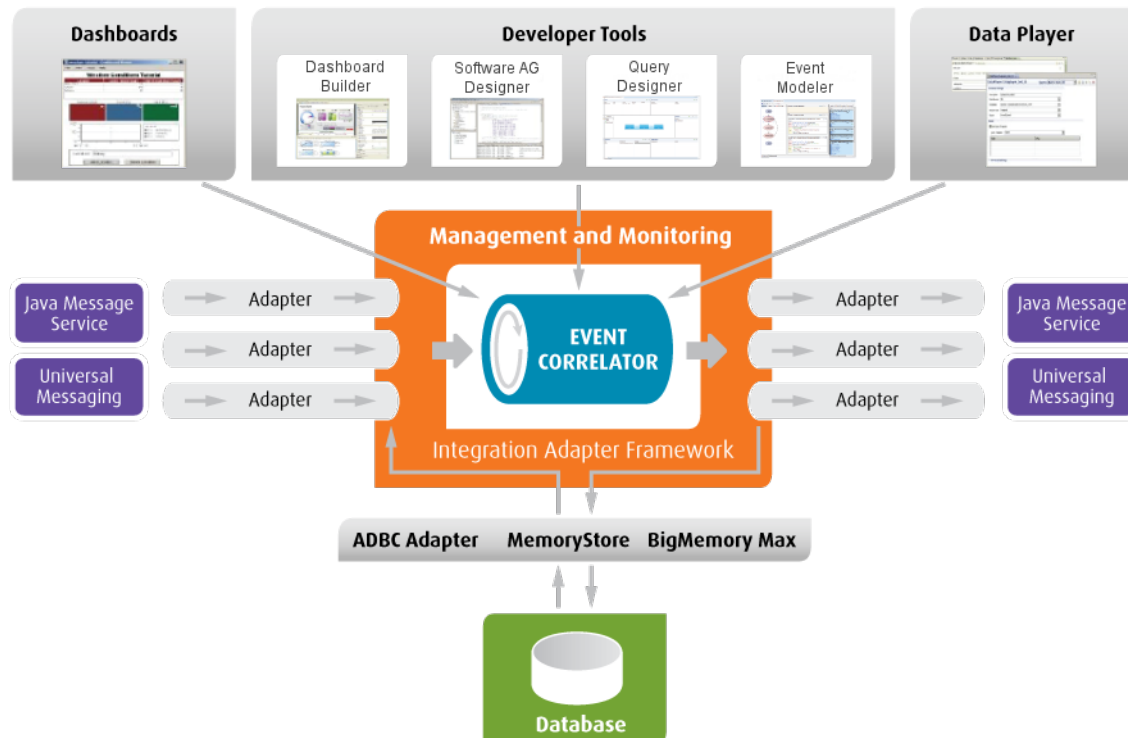
Apama's architecture also provides tools for creating dashboards that let you manage your event processing scenarios. You can use Apama dashboards to start, stop, parameterize, and monitor event processing from client applications.

The Apama ADBC (Apama Database Connector) adapters provides a mechanism to capture and to replay event streams from JDBC/ODBC-compliant third-party databases. Together, the ADBC standard adapters and Apama's Data Player in Software AG Designer let you analyze the actual performance of scenarios already in production, and also investigate the likely behavior of Apama scenarios prior to deployment.

Apama's architecture provides a monitoring and management service that enables centralized configuration of an Apama deployment. A monitoring and management console lets you configure and assess the status of all Apama components in your deployed system.

Apama components can be connected to each other by executing the Apama `engine_connect` utility with specification of an explicit point-to-point connection or by using Software AG's Universal Messaging (UM) message bus.

The following figure illustrates Apama architecture. Each component is described later in this section.



## How Apama integrates with external data sources

You can connect Apama to any event data source, database, messaging infrastructure, or application. There are several ways to do this:

- Write transport and codec connectivity plug-ins.
- Implement Apama Integration Adapter Framework (IAF) adapters.

- Develop custom client applications with Apama APIs for Java, .NET, and C++.
- Create applications that use correlator-integrated messaging for JMS.

### Using connectivity plug-ins to connect with external data sources

Connectivity plug-ins can be written in Java or C++, and run inside the correlator process to allow messages to be sent and received to/from external systems. Individual plug-ins are combined together to form *chains* that define the path of a message, with the correlator host process at one end and an external system or library at the other, and with an optional sequence of message mapping transformations between them.

Connectivity plug-ins perform a similar role to IAF adapters: both allow plug-ins to transform and handle delivery of events. In most cases, we recommend using connectivity plug-ins instead of the IAF for new adapters. The reasons are:

- Connectivity plug-ins run inside the correlator process itself. This allows for simpler deployments with less moving pieces. It also avoids problems for handling cases where one of the IAF and correlator are restarted and the other is not, or communication problems (including latency) between them. Ensuring the correct startup order is also simpler (see "Sending and receiving events with connectivity plug-ins" in *Connecting Apama Applications to External Components*).
- Connectivity plug-ins have a richer data model for both messages and configuration. Connectivity plug-ins can be given events (including sub-events), sequences and dictionaries as map objects. The values within a map can be strings, integers, floats, lists or maps. The lists and maps can in turn contain any of these types (for example, a map can contain a list, where the list contains a map which again contains a list, and so on). This provides an easier to use API for handling nested events and other nested data structures, both in EPL events and in external data formats (such as JSON).
- Connectivity plug-ins allow multiple codecs to be used in combination, allowing for a modular approach to message transformation and greater re-use of codecs.

Connectivity plug-ins also perform a similar role to the Apama client library, which allows Java or C++ code in an external process to send/receive messages to/from the correlator. If Apama events need to be made available within an external system, then consider connectivity plug-ins if the external system has a protocol (such as JSON over HTTP). If the external system hosts plug-ins via an API, then the client library may be a better fit.

For detailed information, see "Working with Connectivity Plug-ins" in *Connecting Apama Applications to External Components*.

### Using IAF adapters to connect with external data sources

Apama's Integration Adapter Framework (IAF) provides bidirectional connectivity with event sources and with your environment.

Apama adapters provide both connectivity and XML-based mapping between your application's data format and Apama's internal format. The purpose of an adapter is to translate events from a proprietary format into Apama events. This lets the correlator



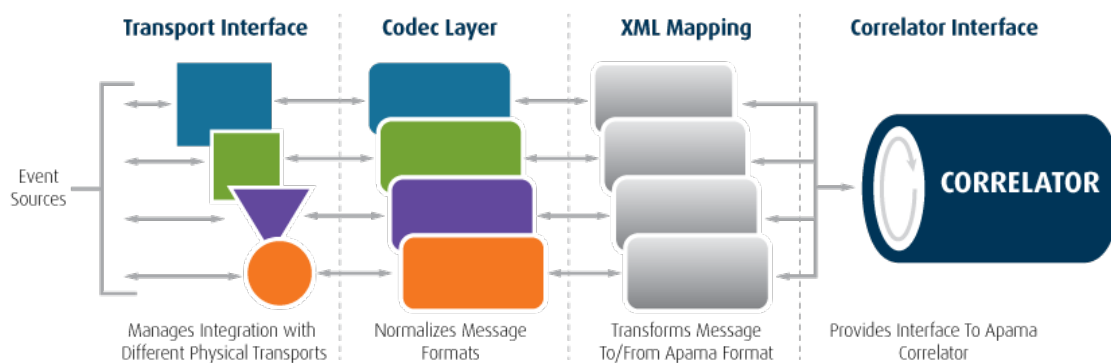
analyze those events. Also, an adapter converts Apama events into your proprietary source format. This lets Apama send the events to an external service.

Adapters allow a single Apama application to efficiently monitor and analyze disparate event types within a common event processing scenario. For example, the same scenario can process events relating to foreign exchange (FX) aggregation, smart order routing and cross-asset trading in capital markets or cold chain automation in supply chain applications.

Within the IAF, Apama offers a range of standard adapters [for capital markets, infrastructure, and connectivity to data and messaging sources](#), as well as APIs for building custom adapters.

The IAF is a server component that adapters plug into for run-time invocation. You can develop an adapter with the IAF adapter library, along with whatever specific connection APIs you need to connect to your data service. Each adapter is structured so that the mapping of parameters between the source format and Apama format can be configured dynamically through XML.

The following figure shows the bidirectional operation of an adapter.



Examples of types of adapters include:

- **Middleware messaging adapters.** Several middleware bus technologies are available on the market, including technologies by Tibco, IBM MQ Series, Vitria, webMethods, SeeBeyond and others. When the middleware you are using supports JMS, you can create applications that use correlator-integrated messaging for JMS in place of an adapter.  
  
Apama is able to interface with these technologies through an appropriate adapter. If the middleware bus offers publish and subscribe capabilities, then Apama can become a named endpoint like any other service. Apama is able to receive events from the bus and convert them, via an adapter, into Apama events for the correlator to process. An adapter can convert any events emitted by a correlator back into the native bus format.
- **Database adapters.** Apama is able to connect to databases for a number of purposes, including searching historical state or storing key events as an audit trail in the corporate database. Most popular databases support a standard access protocol, such

as ODBC or JDBC. The Apama Database Connector (ADBC) provides ODBC and JDBC adapters that use these standard access protocols to connect to your database.

- **Web Services adapter.** The Apama Web Services Client adapter is usable across all Apama components. Interaction with the IAF is transparent to the application.
- **Custom real-time feed adapters.** A number of companies provide real-time content as information feeds. Examples in the finance industry include Reuters, who provides a variety of stock and news feeds, and GLTrade, who provides bidirectional access to a variety of the world's equities and derivatives exchanges. Many such companies use custom communications protocols to provide their data. However, Apama adapters have been easily developed for these and other bidirectional data services.

For detailed information, see "The Integration Adapter Framework" in *Connecting Apama Applications to External Components*.

### Using Apama APIs to connect with external data sources

A range of APIs let you extend Apama at the dashboard, client, and correlator levels for integration with other environments, such as Java, .NET, C, or C++. In addition, you can extend correlator behavior with Java, C and C++ plug-ins that can call external function libraries from within an application.

### Using correlator-integrated messaging for JMS to connect with external data sources

Apama's correlator-integrated messaging for JMS provides an efficient way to receive and send JMS messages to and from Apama applications. It also provides for reliable messaging (guaranteed delivery) and duplicate detection.

## Descriptions of Apama components

---

While traditional architectures can respond to events after they have happened, Apama's event-driven architecture responds in real time to fast moving events of any kind. Apama applications leverage a platform that combines analytic sophistication, flexibility, performance and interoperability. In addition to being an event processing engine, Apama provides sophisticated development tools, a flexible testing environment, an extensible integration framework and graphically-rich dashboards. This makes Apama a comprehensive event processing platform for building real-time, event-driven applications.

### Description of the Apama correlator

Apama's event correlator is the engine that powers an Apama application. Correlators execute the sophisticated event pattern-matching logic that you define in your Apama application. Apama applications track inbound event streams and listen for events whose patterns match defined conditions. The correlator's patented architecture can monitor huge volumes of events per second

When an event or an event sequence matches an active event expression, the correlator executes the appropriate actions, as defined by the application logic.

The correlator

- Can concurrently search for and identify vast numbers of discrete event patterns with sub-millisecond responsiveness.
- Can deliver low latency analytics on multiple inbound data streams by monitoring the event streams for patterns you specify.
- Goes beyond simple event processing to deliver actionable responses.

See also ["How the correlator works" on page 35](#).

## Description of event processing languages

Apama provides developers with two language models for building event-based applications:

- EPL, which is Apama's native event processing language
- Apama (in-process) API for Java (JMon)

This section gives you a flavor for how these languages process events. You can find complete information in *Developing Apama Applications*.

## Introduction to Apama EPL

Before EPL can look for patterns in event streams, you must define the types of events you are interested in and inject their definitions in the correlator. An event definition informs the correlator about the composition of an event type. An example event definition for a stock exchange tick feed is as follows:

```
event StockTick {  
    string symbol;  
    float price;  
    float volume;  
}
```

Each field of the event has a type and a name. The type informs the correlator how to handle that field and what operations to allow on it. As you can see, the correlator can handle multiple types, such as numeric values and textual values, within the same event type. Apama can handle any number of different event types at one time.

External event sources such as connectivity plug-ins, clients and the IAF need to be able to send events into the correlator. For the correlator to be able to detect an event of interest, the event's type definition must have been loaded into the correlator. An example of a `StockTick` event is as follows:

```
StockTick ("APAMA", 55.20, 250010)
```

There are two basic EPL structures called monitors and queries.

## Apama monitors

A monitor defines:

- One or more listeners — EPL provides event listeners and stream listeners.
  - An event listener observes the correlator event stream analyzing each event in turn until it finds a sequence of events that match its event expression. When this happens the event listener triggers, causing the correlator to execute the listener action.
  - A stream listener passes stream query output to procedural code. A stream query operates on one or two streams to transform their contents into a single output stream. The type of the stream query output items need not be the same as the type of the stream query input items. The output for one stream query can be the input for another stream query. At the end of the chain of stream queries, a stream listener coassigns each stream query output item to a variable and executes specified code.
- One or more actions — an action is one or more operations that the correlator performs. An action might be to register a listener or it might be an operation to perform when the correlator finds a match between an incoming event or sequence and a listener.

The following EPL example illustrates these concepts in the form of a simple monitor called `PriceRise`. The monitor is composed of three actions. The first two actions declare listeners, which are indicated by the `on` keyword.

```
monitor PriceRise
{
    action onload() {
        StockTick firstTick;
        on all StockTick("IBM",>=75.5,*) : firstTick {
            furtherRise (firstTick);
        }
        float f;
        from tick in all StockTick(symbol="IBM")
            within 60.0 every 60.0
            select mean(tick.price): f { average(tick.price); }
    }
    action average(float av) {
        log "60-second average for IBM: "+av.toString();
    }
    action furtherRise(StockTick tick) {
        StockTick finalTick;
        on all StockTick("IBM",>=(tick.price*1.05),*) : finalTick {
            log "IBM has hit "+finalTick.price.toString();
            emit PlaceSellOrder("IBM",finalTick.price,1000.0);
        }
    }
}
```

When a monitor starts running, the correlator executes the monitor's `onload()` action. In the `PriceRise` monitor, the `onload()` action creates an event listener for all IBM stock ticks that have a price above 75.5 at any volume and a stream listener for all IBM stock ticks. Since the last field of the event (`volume`) is irrelevant to the event listener it is

represented by an asterisk (\*), which indicates a wildcard. This monitor effectively goes to sleep until the correlator detects an IBM stock tick.

If the correlator detects an IBM stock tick, the stream listener takes it as input and uses it to log 60-second averages for IBM stock prices. If the IBM stock tick also has a price that is greater than or equal to 75.5, the correlator copies the field values in that event to the `firstTick` variable and calls the `furtherRise()` action.

The `furtherRise()` action creates another event listener. This event listener is looking for the next part of the event pattern, which involves detecting if the IBM stock price goes up by more than 5% from its new value. The second listener uses the `firstTick` variable to obtain the `price` value in the event that caused the first listener to detect a match. If the price rise occurs, the correlator copies the values in the matching, incoming event to the `finalTick` variable, and executes the associated block of code.

The associated block of code logs the new price and emits a `PlaceSellOrder` event to a receiver that is external to the correlator. For example, an adapter can pick up this event, and translate it into a message that an order book can operate on. The `PlaceSellOrder` event causes placement of an order for 1000 units of IBM stock.

## Apama queries

An Apama query does the following:

- Operates on only specified input events — You can specify one or more event types. For each event type, you can filter event content so that the query operates on only certain instances of that event.
- Partitions input events according to their keys — Based on the values of selected fields in incoming events, the correlator segregates events into many separate partitions. Partitions typically relate to real-world entities that you are monitoring such as bank accounts, cell phones, or subscriptions. For example, an automated bank machine associates an account number with every transaction. You can define a query that partitions `Withdrawal` events based on their account number. Each partition could contain the `Withdrawal` events for one account. This lets you look for withdrawal patterns that look suspicious.

Typically, a query application operates on a huge number of partitions with a relatively small number of events in each partition. Each partition is identified by a unique key value, such as an account number.

- Watches for the event pattern of interest across all partitions — An event pattern can define a sequence of events as well as conditions that determine whether there is a match. A condition can be a filter that specifies a Boolean expression that must evaluate to true for there to be a match, a time constraint that requires some or all elements in the pattern to occur within a given time period, or an exclusion, which is an event whose presence prevents a match.
- Executes specified actions when a pattern match is found — Actions can send events. This is how a query can communicate with other queries, with monitor instances, and with external system elements in a deployment, such as adapters, correlators, or other deployed processes.

- Optionally uses parameters — When a query has no parameters, a single instance of the query is automatically created when the query is loaded into a correlator. If one or more parameters are defined for a query then when the query is loaded into a correlator, no instances are created until you specify parameter values.

The following simple query example illustrates these concepts:

```
query ImprobableWithdrawalLocations {
  parameters {
    float period;
  }
  inputs {
    Withdrawal(value>500) key cardNumber within period;
  }
  find Withdrawal:w1 -> Withdrawal:w2
  where w2.country != w1.country {
    log "Suspicious withdrawal: " + w2.toString() at INFO;
  }
}
```

The optional `parameters` block in a query definition specifies parameters for which you must supply values so that an instance of the query (a parameterization) can be created. A query that defines parameters functions as a template for multiple parameterizations. Each parameterization of the simple query above would watch for the identified `Withdrawal` events for a different time period.

The `inputs` block of a query definition identifies the events that the query operates on. The example query operates only those `Withdrawal` events whose `value` field is greater than 500 and that arrived within the time range specified by the value of the `period` parameter. You can also specify that no more than a particular number of events can be in each partition at a given moment.

In the example, the `Withdrawal` input definition specifies the `cardNumber` field as the key. The query partitions incoming `Withdrawal` events according to their card numbers.

The `find` statement specifies the pattern you are looking for. In the example, the pattern of interest is a `Withdrawal` event followed by another `Withdrawal` event where the `country` fields for the two events are different. Since a query operates on the events in each partition independently of the other partitions, this pattern suggests a suspicious transaction.

Finally, when a query finds a match it executes the statements in its `find` block. In the example, the query logs a message that contains the `Withdrawal` event that triggered the match.

See also: ["Understanding queries" on page 46](#) and ["Architectural comparison of queries and monitors" on page 48](#).

## Introduction to Apama in-process API for Java (JMon)

EPL was designed specifically for event processing. However, some organizations and individuals prefer to use a mainstream programming language, such as Java. Consequently, Apama has made the features of the correlator available in Java.

The correlator uses its embedded Java virtual machine (JVM) to execute JMon monitors. The following Java code defines the `StockTick` event type.

```
import com.apama.jmon.Event;

public class StockTick extends Event {
    public String symbol;
    public double price;
    public double volume;

    //No argument constructor
    public StockTick() {
        this("",0,0);
    }

    //Constructor
    public StockTick(String name, double price, double volume) {
        this.name = name;
        this.price = price;
        this.volume = volume;
    }
}
```

In JMon, an event class definition must include the following:

- A set of public variables to hold the event's fields
- A no-arguments constructor
- A parameterized constructor

While this is not as concise as EPL, these are familiar Java conventions.

The following code defines a JMon monitor that listens for any IBM stock tick events with a price that is greater than 75.5. The `onLoad()` method creates an event expression object, which receives an Apama event string. This string represents the event to listen for. Also, the `PriceCheck` class implements the `MatchListener` class, which provides a `match()` method to be invoked if the correlator finds a match. This is passed to the event expression object as well.

```
import com.apama.jmon.*;
public class PriceCheck implements Monitor, MatchListener {
    public PriceCheck() {}
    public void onLoad() {
        EventExpression eventexpr =
            new EventExpression("StockTick(\"IBM\",>75.5,*)");
        eventexpr.addMatchListener(this);
    }
    public void match(MatchEvent event) {
        System.out.println("Pattern detected");
    }
}
```

## Description of Software AG Designer

Software AG Designer is the main entry point for Apama development. When you are ready to start developing your Apama application, open Software AG Designer and create an Apama project to contain your application files.

Complete information is in *Using Apama with Software AG Designer*.

## Description of Query Designer

Apama's Query Designer editor, which runs in Software AG Designer, provides a graphical environment that complements Apama's event processing language. You use Query Designer to define and update Apama queries. An Apama query monitors a very large number of real-world entities and processes events on a per-entity basis, for example, all events related to one credit card account.

Query Designer provides graphical tools for specifying:

- Inputs a query operates on — For each input, you specify the event type and a partition key field. You can also specify a filter, a time constraint, and a maximum number of events to operate on in each partition.
- Parameters — For each parameter you add, you specify a name and a type, which must be one of `integer`, `float`, `string`, or `boolean`.
- Event pattern of interest. After you add an event type as an input to a query, you can drag that event type on to a canvas where you graphically define the event pattern you are interested in.
- Actions — Define one or more actions to be executed when a match is found.
- Conditions — Add a filter, time constraint, or exclusion (an event that prevents a match) to the event pattern of interest.
- Aggregates — Find data based on many sets of events.

Query Designer is intended for business users who may not be familiar with EPL.

See "Creating new query files" in *Using Apama with Software AG Designer*.

## Description of Event Modeler

Apama's Event Modeler editor in Software AG Designer provides a graphical environment that complements Apama's event processing language. You use Event Modeler to create and modify scenarios. A scenario is a description of an application that will be deployed on and leverage the real-time capabilities of Apama's event correlator. Event Modeler provides graphical tools for:

- Defining the states that the scenario passes through
- Defining rules that control what happens in each state and when there is a transition to the next state
- Defining input and output variables
- Adding standard and custom blocks that provide reusable operations

A scenario is a template that specifies how instances of the scenario will behave once they are created inside a correlator



The design philosophy behind Event Modeler is that once you define a scenario anyone should be able to create and configure instances of it without requiring technical expertise or knowledge of its inner workings. Therefore, once the scenario author has finished editing their scenario, the next step is to create a graphical dashboard for it. This lets the end users access and interact with the scenario through an intuitive and easy to manipulate graphical user interface.

See also ["Understanding scenarios and blocks" on page 49](#).

After you define a scenario, you use the Apama tools in Software AG Designer to test it. Software AG Designer translates your scenario into a monitor and injects the monitor into the correlator. For an introduction to monitors, see ["Description of event processing languages" on page 27](#).

For additional information, see "Overview of Using Event Modeler" in *Developing Apama Applications*.

## Description of Dashboard Builder and Dashboard Viewer

Apama's Dashboard Builder enables you to create end-user dashboards and prepare them for deployment. A dashboard provides the user interface to a scenario and allows you to create instances of the scenario, view the performance of the scenario and interact with it.

For applications written in EPL, you create data views and use Dashboard Builder to create a dashboard from the data views.

Dashboard Builder is a visual design environment. A primary goal of Dashboard Builder is to enable non-technical users to create sophisticated dashboards. Consequently, Dashboard Builder provides a complete design and deployment environment. With a wide range of visual objects and drag-and-drop development, Dashboard Builder provides the tools needed to create highly customized dashboards from which users can start/stop, parameterize and monitor Apama scenarios and data views.

Dashboard Builder offers an extensive array of graphical widgets with which to build custom user dashboards. Meters, gauges, tables, graphs, and scales are available for creating highly customized dashboards. You can further personalize the interface through addition/deletion of panels or modification of graphics and color schemes.

Dashboard Viewer is the tool that end-users run to access dashboards.

See also *Building and Using Dashboards*.

## Description of client development kits

Apama is highly extensible with a range of APIs provided at the dashboard, client and correlator levels. You can use these APIs to integrate with other environments, such as Java, JavaBeans, C, C++, or .NET. You can extend correlator behavior with plug-ins that can call external function libraries from within an application scenario.

See "Developing Custom Clients" in *Developing Apama Applications*.

## Description of Management and Monitoring Console

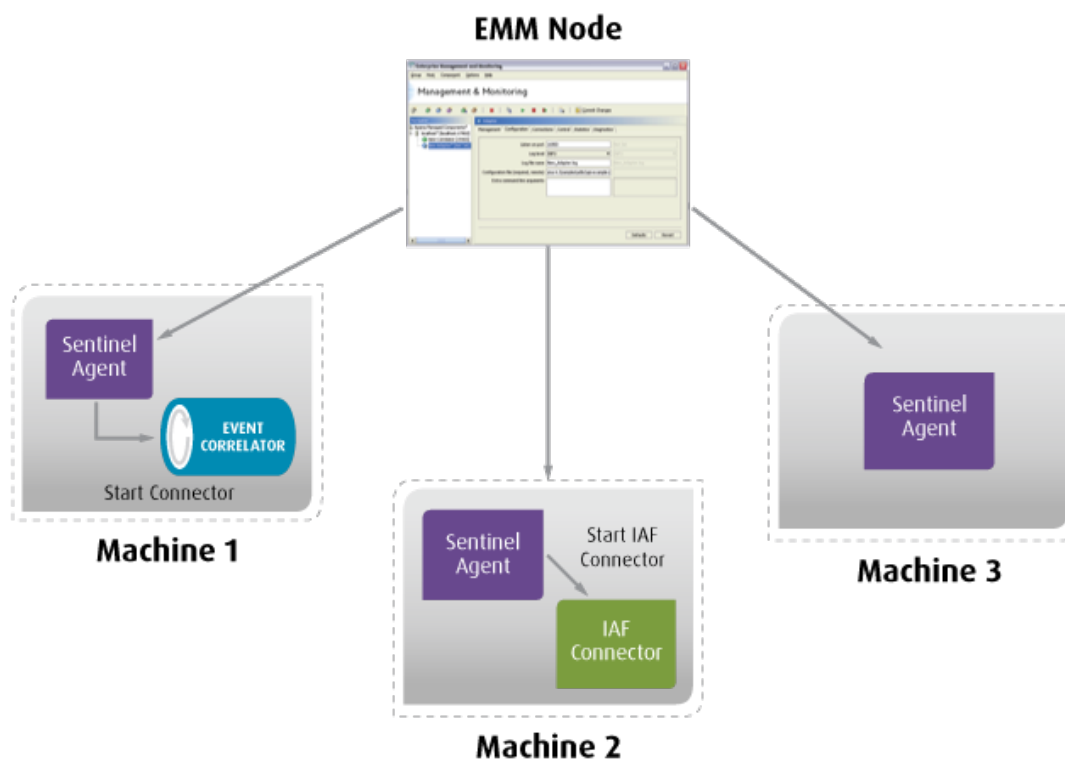
Apama's Management and Monitoring console enables coordinated management and monitoring of an entire Apama platform deployment. The console provides two basic components:

- Centralized control service, with incorporated dashboard
- Sentinel agents, running on each distributed node

The Management and Monitoring console is where you configure management policies. The Management and Monitoring component uses the sentinel agents to implement these policies on the distributed machines.

See "Using the Management and Monitoring Console" in *Deploying and Managing Apama Applications*.

The following figure illustrates this. At the top of the figure, is the client machine that is running the Management and Monitoring component. This is the control node. The other three machines in the figure are running the sentinel agents. The control node uses the sentinel agents to start, shut down, recover and configure correlators, adapters, and Apama client applications.



The capabilities of the Management and Monitoring console are as follows:

- Distributed start up and configuration of components. Each sentinel controller can create components such as correlators and IAF adapters. You can use the

Management and Monitoring console to configure and start a set of components, for example, three correlators.

- Component health monitoring and failure detection. Each Apama component provides an interface, through which the Management and Monitoring console can regularly ping to ensure the component is up and performing properly. Failure to receive an appropriate response can indicate the failure of a component. This capability is configurable, since some applications require higher levels of fault tolerance than others.
- Component recovery. It is possible to set up automated policies to restart failed components. For correlators, this might involve the restoration of checkpointed state.
- Component shut down. It is possible to shut down components centrally through the Management and Monitoring console.

## Description of Apama's Data Player

Apama's Data Player, which runs in Software AG Designer, accelerates the development/deployment cycle of Apama scenarios, EPL applications, or JMon applications by letting you pre-test (via simulation) your applications on event streams captured in Apama. It also supports flexible event processing replay features.

Data Player provides analysis tools for the Apama environment. It enables Apama users to investigate the likely behavior of Apama applications prior to deployment, as well as analyze the actual performance of those applications already in production.

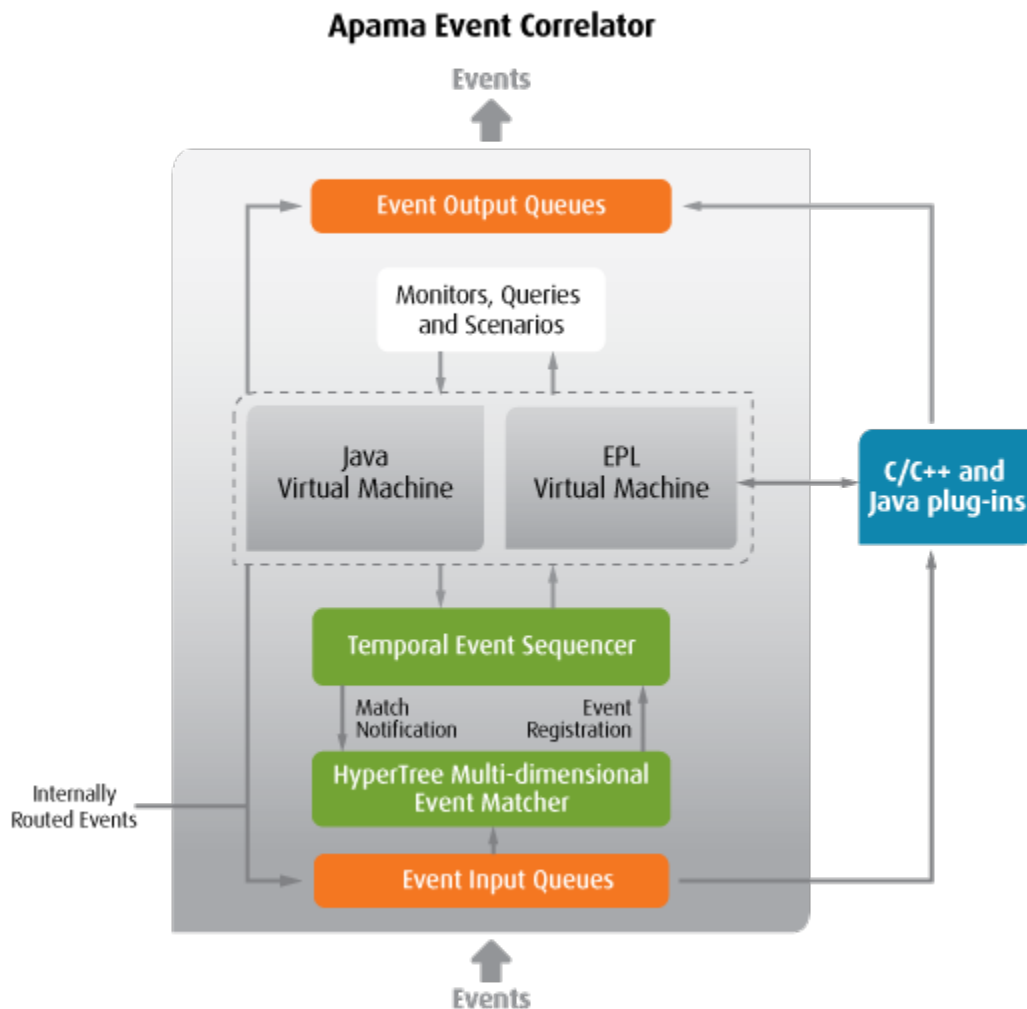
Data Player operates on data captured by the Apama Database Connector (ADBC). ADBC provides Apama standard adapters that allows access to JDBC/ODBC compliant databases as well as to Apama Sim files. Analysis can include all events received by Apama or only selected event streams. Likewise, you can choose specific segments of time from the past (for example, an entire day, a specific 30 minute period, or any user chosen time slice). Additionally, you can accelerate replay speeds many times the actual live speeds, or slow them down or pause for more careful exploration of event processing operations.

See *Using Apama with Software AG Designer* for information about the Data Player. See *Connecting Apama Applications to External Components* for information about the ADBC adapter.

## How the correlator works

---

The following figure shows the inner details of a running event correlator. After the figure, there is a detailed discussion of how the event correlator works.



Monitors, queries and scenarios identify event patterns of interest and the responses to take if those patterns are detected. You can use EPL to write monitors and queries directly. You can use JMon to write monitors directly. Apama uses the Software AG Designer development environment for writing source code for monitors and queries, and provides graphical editors for defining queries (Query Designer) and scenarios (Event Modeler). When you use Query Designer or Event Modeler, the query or scenario is translated into a monitor that the correlator can execute.

The correlator does not just execute loaded monitors and queries in a sequential manner, as if they were traditional imperative programs. Instead, the correlator loads its internal components (the hypertree and the temporal sequencer) with the monitoring specifications of the monitors and queries. The in-built virtual machines execute only the sequential analytic or action parts of the monitors and queries.

The correlator contains the following components:

- HyperTree multi-dimensional event matcher

The event matcher contains data structures and algorithms designed for high performance, multi-dimensional, event filtering. The correlator loads the event matcher with event templates. An event template identifies the event you are interested in. Logically, an event template is a multi-dimensional search. For example, a template for a stock market event might have values such as the following:

- Instrument: IBM
- Bid Price: 93.0 <- -> 94.5
- Offer Price: \*
- Bid Volume: >10000
- Offer Volume: \*

This event template expresses a multi-dimensional search over stock market events. The template will match any event about stock IBM, which has a bid price between 93.0 and 94.5 and a bid volume greater than 100000. The offer price and volume are irrelevant to this search and so wildcards are used.

This kind of multi-dimensional, multi-type, ranged searching is what the event matcher was specifically designed for. In checking whether an incoming event matches any of the registered event templates, the event matcher exhibits logarithmic performance. This means that vast numbers of event templates can be queried against, with the minimum possible performance tail-off.

An event template is the basic unit of monitoring. A simple monitor might have one or a few event templates. A more complex monitor might have many. A monitor needs to load event templates only when events that match the specification are relevant to the monitor: in a multi-stage monitor, a monitor can insert and remove several event templates as the monitoring requirements change.

#### ■ Temporal and stream sequencer

The temporal and stream sequencer builds upon the single event matching capabilities of the event matcher to provide multiple temporal event and stream correlations. With EPL or JMon, you can declare a temporal sequence such as “tell me when any news article event is followed within 5 minutes by a 5% fall in the price of the stock the news article was about”. This is a temporal sequence, with a temporal constraint. The sequence is a news article event, followed by the next stock price event, and then another stock price event with a price 5% less than the previous price event. The temporal constraint is that the last event occurs within 5 minutes of the first event.

The sequencer manages this temporal monitoring process, using the event matcher to monitor for appropriate event templates. This capability saves the programmer from having to encode such complex temporal logic through less intuitive imperative logic.

#### ■ Monitors

The correlator provides the capability for monitors to be injected as either EPL or Java bytecode. The number of monitors that can be loaded into a single correlator are only limited by memory size. When loaded, a monitor configures the hypertree and temporal sequencer with event templates for monitoring. The correlator stores the monitor internally and executes actions in the appropriate virtual machine in response to event detection.

Each monitor instance has its own address space within the correlator for storage of variables and other state. Monitor temporary storage size is limited only by the memory size of the host machine. (Software AG Designer translates Event Modeler scenarios into EPL monitors.)

- Queries

Queries provide a higher level, more declarative mechanism for detecting event patterns. Unlike monitors, they also support automatically storing their state in a distributed cache such as Software AG's BigMemory Max. BigMemory Max allows queries to transparently and elastically scale out with the support of a JMS message bus such as Software AG's Universal Messaging. The storage size is thus limited by the distributed cache, which can exceed the memory size of a single host machine.

- Event input queue

External interfaces, such as adapters and connectivity plug-in chains, send events into the correlator. To start the monitoring process, the correlator injects each event, in the order in which it arrives, into the hypertree. Any matches filter through the temporal sequencer and invoke required actions in the virtual machines. Some actions might cause events to be queued for output. During peak event input flow, events might wait on an input queue for an extremely brief moment.

- EPL virtual machine

In response to detected event patterns of interest, the EPL virtual machine executes EPL. The fact that the correlator behaves this way, rather than continuously executing imperative code, is another reason for its high performance. Also, you can implement parallel processing in your applications so that the correlator can concurrently execute code in multiple monitors.

- Java virtual machine

The Java virtual machine is a standard JVM that has been embedded in the correlator. Thus any standard Java code features are accessible from monitors. The Java virtual machine behaves exactly as the EPL virtual machine in that the detection of event patterns of interest invokes code fragments.

- Event output queue

Monitor actions can output events to be communicated to other monitors or to external systems. When a monitor routes an event, the event goes to the front of the input queue. This ensures that any monitors that are listening for that event immediately detect it. When a monitor generates an event for an external receiver the event goes to an output queue for transmission to the appropriate registered party.

When you use the correlator in conjunction with the IAF, then an output event might represent an action on an external service. The IAF transforms the output event into an invocation of the external service. An example is an event that places an order into the order book of a Stock Exchange.

#### ■ Plug-ins

It is possible to extend the capabilities of the correlator through a plug-in. A plug-in is an externally-linked software module that registers with the correlator through the correlator's extension API. Plug-ins are useful when programming libraries of useful real-time functions have been built up. These functions can be made available as objects that can be invoked by EPL actions.

Apama provides a number of standard plug-ins:

- The MemoryStore plug-in lets monitors share in-memory data.
- The TimeFormat plug-in helps you format dates and times.

#### ■ State persistence

When the correlator shuts down the default behavior is that all state is lost. When you restart the correlator no state from the previous time the correlator was running is available. You can change this default behavior by using correlator persistence. Correlator persistence means that the correlator automatically periodically takes a snapshot of its current state and saves it on disk. When you shut down and restart that correlator, the correlator restores the most recent saved state.

To enable persistence, you indicate in your EPL code which monitors you want to be persistent. Optionally, you can write actions that the correlator executes as part of the recovery process. When code is injected for a persistence application, the correlator that the code is injected into must have been started with a persistence option. Persistent monitors must be written in EPL. State in JMon monitors cannot be persistent. State in chunks, with a few exceptions, also cannot be persistent.

You program the correlator by injecting monitors that you write in EPL or JMon, or by injecting queries. If you use Event Modeler to define scenarios, Software AG Designer translates the scenario definition files (`.sdf` extension) into monitors for you.

When events are sent to the correlator, the correlator processes events by comparing the events to what listeners are active in the correlator. Each external event matches zero or more listeners. The correlator executes a matching event's associated listeners in a rigid order. The correlator completes the processing related to a particular event before it examines the next event. If the processing of an event generates another event that is routed to the correlator, the correlator processes all routed events before moving on to the next event in its queue. If a listener action block does not route events, the next external event is considered.





# 3 Apama Concepts

---

■ Event-driven programming .....	42
■ Complex event processing .....	43
■ Understanding monitors and listeners .....	44
■ Understanding queries .....	46
■ Architectural comparison of queries and monitors .....	48
■ Understanding scenarios and blocks .....	49
■ Understanding dashboards .....	51

This section discusses the concepts that are central to all Apama applications. A thorough understanding of these concepts can help you design and develop more robust Apama applications.

## Event-driven programming

---

Events are data elements. Each event is a collection of attribute-value pairs that capture the state (or changes to state) of real-world or computer-based objects. Events consist of data and temporal attributes that represent the *what*, *when*, and *where* of an object. This can be the state of an object or the interaction of objects at a particular time. Real world examples of events include:

- Stock market trades and quotes
- RFID signals
- Satellite telemetry data
- Card swipes at a turnstile
- ATM transactions
- Network activities/faults
- Troop movement on a battlefield
- Activity on a website
- Electronic funds transfers
- SCADA alerts (Supervisory Control and Data Acquisition)

Processing events requires event-driven programming. The hallmarks of event-driven programming include the following:

- Program execution does not flow sequentially from beginning to end. There is no standard starting point.
- Program execution happens in response to the arrival of events. Some external source pushes the events into your program.
- Events arrive in asynchronous messages.
- There are two main bodies of code: code that analyzes incoming events to determine if the events are of interest and code that performs actions when events of interest are found.

There are a lot of similarities between GUI programming and event driven programming. For example, in a GUI program you typically write code that responds to mouse clicks.

See also *Developing Apama Applications*, "How EPL applications compare to applications in other languages".

## Complex event processing

Complex Event Processing (CEP) is software technology that enables the detection and processing of

- Events derived from other events — a derived event is an event that your application generates as a result of applying a method or action to one or more other events.
- Event sequences, often with temporal constraints.

CEP programs find patterns in event data that enable detection of opportunities and threats. Timely responses are then pushed to the appropriate recipients. The responses can be in the form of automated events, such as placing orders in algorithmic trading systems, or alerts to someone using Business Activity Monitoring (BAM) dashboards. The result is faster and better operational decisions

EPL and JMon provide the features needed to write applications that can perform CEP. The following example shows how EPL can concisely define event patterns and rules. While this example shows the implementation of an Apama monitor, an example that shows an implementation of an Apama query would also demonstrate complex event processing.

The `NewsCorrelation` monitor's `onload()` action defines a listener that specifies a complex event expression. The literal translation of the expression is “look for all news articles about any stock, followed by a 5% rise in the value of that stock within 5 minutes”. This is the kind of implied news impact that might be of interest to a trader or a market risk analyst.

```
monitor NewsCorrelation {
    NewsItem news;
    StockTick tick;
    action onload() {
        on all NewsItem():news {
            on StockTick(symbol=news.subject):tick {
                on StockTick(symbol=news.subject,
                    price >= (tick.price*1.05))
                    within(300.0) alertUser;
            }
        }
    }
    action alertUser() {
        log "News to price movement Correlation for stock "
            +news.subject+" has occurred";
    }
}
```

The `on` keyword specifies a listener. The initial listener nests two additional listeners that define the event sequence of interest. The listeners do the following:

1. The initial listener watches for all `NewsItem` events.
2. Each time the correlator detects a `NewsItem` event, this listener captures it in a `news` variable.

3. The first nested listener then watches for a `StockTick` event for the stock that the news item was about. This listener uses the `news` variable to access the information from the previously detected event.
4. When the correlator detects a matching `StockTick` event, the first nested listener captures it in the `tick` variable.
5. The innermost listener then watches for another `StockTick` event for the same stock but with a price that is at least 5% higher than the price in the event captured by the `tick` variable. The `within` keyword indicates that the correlator must detect the second `StockTick` event within 300 seconds (5 minutes) of finding the initial `NewsItem` event.
6. If the correlator finds a second `StockTick` event that matches within 5 minutes, the monitor sends a message to the log file. The nested listeners terminate.

If the correlator does not find a second `StockTick` event that matches within the 5 minutes, the nested listeners terminate without sending a message to the log.

## Understanding monitors and listeners

An introduction to monitors and listeners is in ["Description of event processing languages" on page 27](#). As mentioned there, monitors are the basic program component that you inject into the correlator. You write monitors in EPL or JMon. If you create scenarios using Apama's Event Modeler in Software AG Designer, your scenario is translated into one or more monitors.

A monitor defines:

- One or more listeners — a listener is the EPL mechanism that specifies the event or sequence of events that you are interested in. Conceptually, listeners sift through the streams of events that come in to the correlator and detect matching events.
- One or more actions — an action is one or more operations that the correlator performs. An action might be the registration of a listener or it might be the execution of an operation when the correlator finds a match between an incoming event or sequence and a listener.

When the correlator executes an `on` statement, it creates a listener. A listener watches for an event, or a sequence of events, that matches the event expression specified in the `on` statement. An event expression defines one or more event templates. Each event template defines an event type to look for, and specifies whether the event's fields should have any specific values. In addition, listeners can specify

- Temporal constraints — for example, a listener can specify that two events of interest must be received within 10 minutes.
- Logic — for example, a listener can specify that it is interested in event A or event B or event C.

It is often desirable to listen, separately but concurrently, for different instances of the same event type. For example, you might want to listen for and process, separately but

concurrently, stock tick events for different stocks. EPL accomplishes this by letting a monitor instance spawn other monitor instances.

In the monitor code, you spawn a monitor instance by specifying the `spawn` keyword followed by an action. Each act of spawning creates a new instance of the monitor.

When the correlator spawns a monitor instance, it does the following:

1. The correlator creates a new monitor instance from the original monitor instance. The new monitor instance is almost identical to the original. The new monitor instance has a copy of the variables from the original but the active listeners from the original monitor instance are not copied.
2. The correlator invokes the named action on the new monitor instance.

Monitors that contain a `spawn` statement(s) typically act as factories, creating new monitor instances that all listen for the same event type but where each listens for events that have different values in one or more fields. Also, monitors can spawn to particular threads, referred to as *contexts* in EPL. This enables the correlator to concurrently process multiple monitor instances. (You must create contexts in EPL or use Event Modeler to implement parallel processing. You can refer to contexts from both EPL and JMon.)

The lifecycle of a monitor is as follows:

1. You use Software AG Designer or a correlator utility to inject the EPL or Java that defines the monitor into the correlator.
2. The correlator creates the original monitor instance, including space for variables as needed.
3. The correlator executes the monitor instance's `onload()` action.
4. The original monitor instance might spawn several times creating new monitor instances. For each spawned monitor instance, the correlator creates a copy of the original monitor instance's variable space and then executes the specified action.
5. A monitor instance terminates when it has no active listeners. Upon termination, the correlator invokes the monitor instance's `ondie()` method, if one is defined. Note that it is possible for a monitor instance to remain active after the monitor instance that spawned it has terminated.
6. When the last instance of a particular monitor terminates, the correlator calls the monitor's `onunload()` method, if it defines one. The last monitor instance to terminate might be the original monitor instance or a spawned monitor instance. Regardless, when the last instance terminates the correlator invokes the monitor's `ondie()` method and then the monitor's `onunload()` method, if these methods are defined.

For example, suppose that a monitor definition specifies an `ondie()` method and an `onunload()` method. You inject this monitor and the correlator creates the original monitor instance. The original monitor instance spawns 9 times. Consequently, there are 10 instances of that monitor in the correlator. After all of these monitor instances have terminated, the correlator will have called `ondie()` 10 times and it will have called `onunload()` once.

See "Getting started with Apama EPL" in *Developing Apama Applications*.

## Understanding queries

---

Apama queries allow business analysts and developers to create scalable applications to process events originating from very large populations of real-world entities. Scaling, both vertically (same machine) and horizontally (across multiple machines), is inherent in Apama query applications. Scaled-out deployments, involving multiple machines, will use distributed cache technology to maintain and share application state. This makes it easy to deploy across multiple servers, and keep the application running even if some servers are taken down for maintenance or fail.

Apama queries are designed to be easy to develop for both the business analyst and the application developer. Graphical tools to specify the application design and full round-trip engineering allows both the business analyst and the developer to work on the same queries. At the developer level, an Apama query is defined using the Apama event processing language, EPL.

Apama's visual Query Designer in Software AG Designer enables business analysts to easily create new queries and to view and review existing queries.

### Use cases for queries

Apama queries are well suited to problems that:

- Map to a large set of partitions
- Have continuous availability and/or scalability requirements
- Do not require sub-millisecond latency

Partitions may correspond to customer accounts, transactions being tracked, devices or some other entity. In a query application, the correlator processes the events in each partition independently of other partitions.

Advantages of Apama queries over Apama monitors:

- Platform provides active-active availability. That is, queries can be run in a cluster, where every node in the cluster contributes processing resources. The number of nodes can be changed dynamically without losing state.
- Scale out across multiple servers
- Declarative pattern specification
- Query evaluation is based purely on past event history. Other than events, queries have no state and so they behave uniformly over time.

Disadvantages of Apama queries compared to Apama monitors:

- Higher latency than monitors. Latency is of the order of milliseconds to seconds rather than microseconds to milliseconds. Exact values depend on the deployment and the types of events being processed.

- Apama monitors allow you to write custom and more powerful EPL applications that do not have the declarative and structural bounds that queries have.

To take advantage of the scalability and availability that the queries platform offers, the problem your application needs to solve should meet one or more of the following requirements:

- Different partitions for a given query must be completely independent. However, different queries can use different partition keys for the same event types. For example, one query may partition ATM withdrawals by `cardNumber`, and another by `atmId`.
- The average number of events in each window should be low. The recommendation is less than 50 events. For example, if ATM withdrawals are partitioned by `cardNumber` then a window that retains withdrawals for a three-day period is fine because the typical number of withdrawals per card is likely to be low. While it is possible to have hundreds of withdrawals for a single card number, that would be an exceptional case and probably indicative of suspicious behavior.
- Other than the history of events, no state is required. Queries do not provide for state to be stored. However, it is possible to mix monitors and queries in the same deployment.
- The time between events destined for the same partition would typically be long, that is, more than a few seconds between events.
- The exact ordering between events is not critical. A query may treat two events for the same partition that occur close in time as having occurred in an order that is different from the order in which they were sent.

### Query application examples

Some examples of use cases for queries include:

- Customer relation management — monitoring transactions between a retailer or service provider and individual customers. For example, queries can identify:
  - Transactions that are implausible and indicate fraudulent activity. See the ATM fraud sample application, which is in the `samples\queries` directory of your Apama installation.
  - Users who have not yet registered an optional account on their service provider's website. See the unregistered users sample application.
  - Customers who may be interested in a particular retail offer.
- Tracking parcels — monitoring parcels to determine when one is failing to progress through the distribution system for a certain amount of time, or is in danger of not arriving at its destination.

In all of these cases, the problem can be easily partitioned (by customer account or parcel), and the number of events per partition is likely to be low and spread out in time.

## Architectural comparison of queries and monitors

In some ways, an Apama query is similar to an Apama monitor. Each operates as a self-contained event processing agent that communicates with other monitors and queries by sending and receiving events.

**Note:** While Apama queries and Apama stream queries use similar terminology, they are different constructs. Apama queries can communicate with monitors but Apama queries are not contained in monitors. Whereas Apama stream queries are defined and operate inside monitors.

One difference between a monitor and a query is the programming model for scaling. With monitors, the approach is procedural. A `spawn` statement is used to create new monitor instances. Typically, for each real-world entity, a separate monitor instance is used to handle the events relating to that entity. The developer has full control over what data is held where as well as the design of the solution architecture. With queries, the approach is declarative. A key is defined which is used to identify how the events are partitioned such that events from each real-world entity are handled separately. Also, queries can use a distributed Apama MemoryStore to share historical data between correlators. This allows query deployments to scale across several hosts, make the same data available to multiple correlators and provide availability should a correlator fail or be taken down for maintenance.

Another difference between monitors and queries is the way in which they handle the state, or event history. With monitors, each monitor instance holds the state, or event history, needed for its continuing processing. This state is held in memory, which allows high-performance processing over complex state. With queries, the only state is the event history, which is held separately from the query. The query is effectively stateless, which allows queries to easily scale across correlators.

Typically, a monitor instance operates on events that relate to a particular real world entity. To operate on events related to another entity in the same set, the monitor typically spawns another instance. In contrast, the definition of a query specifies how to partition incoming events so that each set of events that relates to a particular real-world entity is in its own partition. The query operates on the events in each partition independently of every other partition.

The following table compares monitor variables with query parameters:

Monitor variables	Query parameters
Can store any complex state that the monitor requires	Must be one of the following types: boolean, float, integer, string.
Can be updated by the monitor.	Can only be read by the query.



---

**Monitor variables**

Are private to that monitor instance.

---

**Query parameters**

Are controlled by Scenario Service clients.

A monitor can subscribe to a channel to receive all events sent on that channel. A query cannot subscribe to a channel. However, running Apama queries automatically receive all events sent on the `com.apama.queries` channel as well as all events sent on the default channel. For example, monitors, adapters, and the `engine_send` utility can send events to the `com.apama.queries` channel.

Both monitors and queries can send events to a channel. In both monitors and queries, the `send` command sends events to only those components that are connected to that correlator. For both monitors and queries, sending events to other correlators in the cluster requires connections created by the `engine_connect` utility or the use of Universal Messaging to connect the correlators to the same set of UM channels.

In general, monitors follow a more imperative pattern while queries have more declarative clauses. For example, a monitor can use conditional `if...then...else` statements to determine whether there is a match that triggers some processing. A query specifies `where`, `within`, and/or `without` clauses to define filters, time constraints, and exclusions, respectively, right in the event pattern. In general, this allows queries to be simpler than monitors.

## Understanding scenarios and blocks

---

A scenario is a real-time, business strategy, involving multi-stage event analysis and action response. You can construct an event-based application from a single scenario or from several cooperating scenarios. At any time, you can add scenarios to the correlator, modify scenarios in the correlator, or remove scenarios from the correlator. You use Event Modeler to define scenarios.

Apama's Event Modeler editor in Software AG Designer provides the ability for less technical users to quickly create Apama applications in a graphical modelling environment rather than writing event processing logic directly in EPL or JMon.

Examples of complex operations that you can implement in scenarios:

- Spotting key events, such as events that are unusual or events that cross a threshold. For example, reporting when a stock price goes above the monthly peak.
- Performing analytics on events or collections of events, to generate derived data that you can analyze. For example, continuously generating a 5-minute moving average for Microsoft's stock price.
- Comparing or correlating values from events over time to detect trends. For example, detecting when the stock price for GE is 10% above the 5-minute moving average.

- Combining time-ordered key events in business patterns that indicate a complex phenomenon has been detected or a business process has completed. For example, spotting that a particular news bulletin has caused Ford's stock price to move by 5%.
- Taking relevant action in response to a detected pattern. For example, automatically buying or selling stock in response to detecting a favorable opportunity.

Each scenario is a template for the instantiation of scenario instances. A good metaphor from object-oriented design is that the scenario is like a class and the scenario instance is like an object; that is, it is an instantiation of the class. The scenario itself can be a generic template, without the need to define the specific values on which to operate. A scenario instance is the running application with all the specific variables and values having been instantiated on creation.

Each scenario has the following components:

- Smart blocks — also referred to as simply blocks. Blocks are useful, reusable, building-block components that generate and/or respond to events. Any scenario can make use of one or more standard or custom blocks. Event Modeler provides a panel for selecting a block you want to use in your scenario.
- Rules — Scenario rules are configurable, if-then statements that interact with smart blocks to create application-specific event logic. Rules specify operations to perform and determine when control transitions from one state to another.
- States — States let a scenario move through different stages, to be able to handle more complex logic. In each state, a set of blocks and rules are active. If a rule causes control to move to a new state then a new set of blocks and rules become active.
- Variables — Each scenario instance uses a set of variables that you specify. You can identify individual scenario variables as being input variables or output variables. To create a scenario instance, you typically need to provide values for a number of input variables. Output variables let you observe the state of the scenario instance.

After you define a scenario, you use Software AG Designer or correlator utilities to inject the scenario into the correlator. Once the scenario is in the correlator, you can create instances of it. During development, to create, modify, and delete scenario instances, you can use Apama's Scenario Browser in Software AG Designer or the scenario's associated dashboard. When a scenario is in production, you use the scenario's dashboard.

Any number of scenario instances can exist at the same time in the correlator. Each instance performs work that is distinct from the work done by the other instances. For example, consider a scenario that specifies a financial trading strategy. Each time someone creates an instance of this scenario, that user can define the instrument to be traded and the criteria for performing the trade.

By default the correlator finishes processing an event for one scenario instance before it begins processing that event for another scenario instance. But you can specify that the correlator should process events for a given scenario's instances in parallel with the processing of events for other scenario instances. For many applications, enabling parallel processing for a scenario improves application performance.

See "Overview of using Event Modeler" in *Developing Apama Applications*.

Apama blocks are encapsulated elements of CEP logic that you can use in scenario rules. For example, a block might represent:

- A computationally-intensive calculation within an algorithmic trading application
- A complex event pattern to be sought
- The connectivity that integrates Apama with a market data feed.

Blocks make the incorporation of such operations accessible to, not just power-users and programmers, but also business users.

Apama provides a number of standard blocks and these are documented in *Developing Apama Applications*, "Using standard blocks". Apama provides a tool for defining custom blocks in Software AG Designer. When defining your scenario, you can add one or more copies of one or more blocks to the scenario. After you add a block to a scenario, you can use the block's parameters, input feeds, operations, and output feeds in the scenario's rules. When you add a block to a scenario, you are effectively specifying that instances of that scenario should each create an instance of that block running within them.

A number of sample scenarios are available in the `samples\scenarios` directory of your Apama installation directory. Examining sample scenarios is a good way to learn typical scenario construction. In addition, all of the Apama sample applications in Software AG Designer use scenarios, so they also provide good examples from which to learn.

## Understanding dashboards

---

A scenario is a representation of application logic, but without any defined user interaction. You add a dashboard to a scenario to enable end-users to:

- Create a new scenario instance. This might include entering the initialization values for the scenario.
- Monitor the status of all scenario instances. For example, to see when a pattern has been detected, and some action taken.
- Manually intervene in the execution of a scenario instance. For example, to take some action in response to an alert.
- Change the configuration of a running scenario instance.
- Deactivate a scenario instance.

In an Apama application, a dashboard is a real-time, business cockpit for controlling and receiving real-time updates from running scenarios. Deployed dashboards connect to one or more correlators through a dashboard data server. As the scenarios (or data views — see below) in a correlator run, and their variables or fields change, the correlator sends update events to all connected dashboards. When a dashboard receives an update event, it updates its display in real time to show the behavior of the scenario

(or data view). User interactions with the dashboard, such as creating an instance of a scenario, result in control events that the dashboard data server sends to the correlator.

See the introduction in *Building and Using Dashboards*.

If your application uses EPL rather than (or in addition to) scenarios you can create data views, which are table structures that specify event fields that you choose. You can then use these data views to create dashboards.

See "Making event type definitions available to monitors" in *Developing Apama Applications*.

Alternatively, you can use the MemoryStore correlator plug-in in EPL applications. The MemoryStore creates data views for you.

# 4

## Getting Ready to Develop Apama Applications

---

■ Becoming familiar with Apama .....	54
■ Introduction to Software AG Designer .....	54
■ Steps for developing Apama applications .....	56
■ Overview of starting, testing and debugging applications .....	57

The discussions in the following topics provide a foundation for developing your Apama application.

## Becoming familiar with Apama

---

To become familiar with Apama, you should

- Work through the tutorials in Software AG Designer. On the Welcome page, click **Tutorials** under the **Apama** heading. The tutorials provide step-by-step instructions for developing scenarios in Apama's Event Modeler editor, or EPL or JMon applications in the code editors.
- Execute and examine the demonstration applications available from Software AG Designer. On the Welcome page, click **Demos** under the **Apama** heading. The demonstration applications are interactive. You can create instances of queries and scenarios, set parameters for queries and scenarios, and watch the queries and scenarios execute. The demonstrations provide simple examples of what Apama can do and how you might interact with your Apama application.
- Examine sample code. Your Apama installation directory contains a `samples` directory that contains many examples of queries, monitors, JMon programs, scenarios, correlator plug-ins, Apama client programs, and more.
- Read all of this material, *Introduction to Apama*, so that you have a broad understanding of what Apama is all about.
- Understand what is covered in the Apama user documentation. Peruse the documentation so that you know where to look for particular information. You can then refer to the documentation for the component you need to use.

## Introduction to Software AG Designer

---

Software AG Designer is the main tool for implementing Apama applications. It contains a set of Eclipse plug-ins that provides a number of Eclipse perspectives:

- Use the Apama Workbench perspective when you are new to Apama. This perspective provides a simplified view of Apama features that makes it easy to get started developing Apama applications.
- Use the Query Designer to define a query.
- You can use Event Modeler to develop scenarios in either the Workbench or Developer perspective.
- Use the Apama Developer perspective when you are comfortable using the Apama Workbench perspective. The Developer perspective gives you far more control over your Apama project than the Apama Workbench perspective. For example, you can view more than one Apama project at one time, and you can specify launch configuration parameters.

- Use the Apama Runtime perspective for monitoring and debugging the execution of Apama applications.
- Use the Apama Debug perspective to debug your Apama application. The Debug perspective allows you to set break points, examine variable values, and control execution.
- Use the Apama Profiler perspective to profile your Apama application. The Profiler perspective allows you to see which components of your application are consuming the most CPU time or to see if there are other bottlenecks in the application.

When developing an Apama application, the first step is to create an Apama project to contain your application files. An Apama project is a convenient way to manage the various files that make up your application. For example, an Apama application can include the following types of files:

- EPL files (`.mon` extension)
- Query files (`.qry` extension)
- Scenario definition files (`.sdf` extension)
- Block definition files (`.bdf` extension)
- Java files
- Dashboard files (`.rtv` extension)
- Files that contain sample events (`.evt` extensions)
- C, C++, Java and .NET files that contain Apama client applications or correlator plug-ins
- Adapters that provide the interface between your event sources and Apama
- Image files for your dashboards
- Text, HTML or XML files

You can add and manage all of these files from your Apama project in Software AG Designer. In addition, Software AG Designer provides an EPL editor and a Java editor whose features include content assistance, auto-bracketing, templates for frequently entered constructs, and problem detection. After you build an Apama project, Software AG Designer flags any line that contains an error.

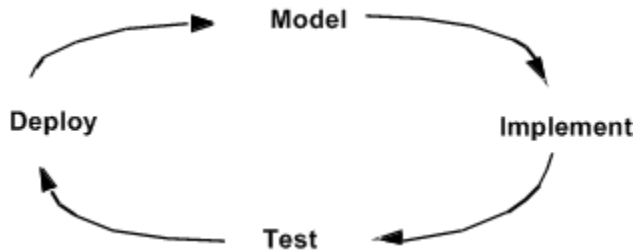
If your project contains dashboards and scenarios, Software AG Designer opens the Dashboard Builder or Event Modeler when you double-click `.rtv` or `.sdf` files, respectively. You can also use Software AG Designer to test your application. Software AG Designer provides Apama features that inject your application into the correlator, send test event streams to the correlator, launch adapters, and configure and monitor the operation of your application in a test environment.

Finally, Software AG Designer provides tools for packaging your application so that you can deploy it. See "Overview of Developing Apama Applications" in *Using Apama with Software AG Designer*.

## Steps for developing Apama applications

---

Typically, Apama development is an iterative cycle:



Multiple contributors with varying expertise can work concurrently to develop an Apama application.

The main steps for developing an Apama application include:

1. **Model:** Design your application. Important tasks are modeling the events that your application needs to handle and identifying the services that your application must provide.
2. **Implement:** Use Software AG Designer to create an Apama project to contain your application files (EPL files, adapters, event files, scenarios, dashboards, and so on). Since Apama applications typically consist of many components, it is often possible to concurrently implement them, particularly if several people are working on the application:
  - Create queries with Apama's Query Designer in Software AG Designer.
  - Create scenarios with Apama's Event Modeler in Software AG Designer.
  - Write EPL or JMon programs in Software AG Designer.
  - Develop Apama client applications.
  - Implement or develop adapters.
  - Create dashboards in Dashboard Builder.
  - Develop correlator plug-ins that extend the correlator's standard features.
3. **Test:** In Software AG Designer, Apama provides a runtime perspective and Scenario Browser view that help test applications as they are built. You can also use Apama's Data Player in Software AG Designer in conjunction with the ADBC adapter to analyze application behavior before, or after, deployment. You can automate testing through the use of command-line clients.
4. **Deploy:** Use the Management and Monitoring console to start and manage Apama components, including correlators. Manage access to Apama applications with dashboards. Collect and manage event data with the ADBC (Apama Database Connector) standard Apama adapter and Apama's Data Player in Software AG Designer. Tune Apama applications for optimum performance.



See "Overview of deploying Apama applications" in *Deploying and Managing Apama Applications*.

## Overview of starting, testing and debugging applications

---

Software AG Designer provides tools for running your Apama application in a test environment.

In the Apama Workbench perspective, click the Start button to start a correlator and inject the current project. The **Scenario Browser** panel is then shown. Use the Scenario Browser to create running instances of your scenarios and examine parameter values during execution. You can monitor execution in the **Console** and **Problems** panes.

In the Apama Developer perspective, select the project you want to test. Select **Run** from the menu bar and then select whether you want to run, debug or profile your Apama application. You can specify one or more launch configurations for your project.

In the Apama Runtime perspective, you can monitor your running application.

In *Using Apama with Software AG Designer*, see "Launching projects", "Debugging EPL applications", and "Debugging JMon applications".



# 5 Apama Glossary

■ action .....	62
■ activation .....	62
■ adapter .....	62
■ aggregate function .....	62
■ batch .....	62
■ block .....	62
■ bundle .....	63
■ .cdp .....	63
■ CEP .....	63
■ channel .....	63
■ connectivity plug-in .....	63
■ context .....	63
■ correlator .....	64
■ correlator deployment package .....	64
■ correlator-integrated messaging for JMS .....	64
■ .csv .....	64
■ current events .....	64
■ custom blocks .....	64
■ dashboard .....	65
■ Dashboard Builder .....	65
■ dashboard data server .....	65
■ dashboard display server .....	65
■ Dashboard Viewer .....	65
■ Data Player .....	65
■ data view .....	66
■ EDA .....	66

■ EPL .....	66
■ event .....	66
■ event collection .....	66
■ event listener .....	66
■ Event Modeler .....	67
■ event pattern .....	67
■ event template .....	67
■ .evt .....	67
■ exception .....	67
■ IAF .....	67
■ Integration Adapter Framework (IAF) .....	68
■ JMon .....	68
■ latest event .....	68
■ listener .....	68
■ lot .....	68
■ Management and Monitoring .....	68
■ match set .....	68
■ MemoryStore .....	69
■ .mon .....	69
■ monitor .....	69
■ MonitorScript .....	69
■ parameterization .....	69
■ parameters .....	69
■ partition .....	70
■ partitioning .....	70
■ plug-in .....	70
■ .qry .....	70
■ query .....	70
■ query aggregate .....	70
■ Query Designer .....	70

■ query input definition .....	71
■ query instance .....	71
■ query key .....	71
■ query window .....	71
■ range .....	71
■ .rtv .....	71
■ scenario .....	72
■ .sdf .....	72
■ sentinel agent .....	72
■ simulation .....	72
■ SmartBlock .....	72
■ Software AG Designer .....	72
■ stack trace element .....	72
■ standard blocks .....	73
■ stream .....	73
■ stream listener .....	73
■ stream network .....	73
■ stream query .....	73
■ stream source template .....	73
■ Web Services Client adapter .....	74
■ window .....	74
■ within clause .....	74
■ without clause .....	74

## action

---

An action is a block of code. Optionally, an action can have parameters and/or a return type. An action can be called, typically as part of responding to an event listener. Actions can be members of monitors, events or queries. The following action names have special meanings and may be called by the correlator:

- On monitors only: `onload()`, `ondie()`, `onunload()`
- On monitors and events: `onBeginRecovery()`, `onConcludeRecovery()`

## activation

---

When the passage of time or the arrival of an item causes a stream network or an element in a stream network to process items.

## adapter

---

Software component that translates events from a non-Apama format to Apama format. This allows the correlator to analyze the event. An adapter plugs into the Apama Integration Adapter Framework (IAF) and injects events into the correlator. Adapters can be bi-directional, converting event formats in both directions.

## aggregate function

---

A function that operates on all items in a query window, for example, `sum()`.

## batch

---

When you define a window in a stream query, you can specify that you want to update the window in batches. A batch can be a certain number of items, or it can be the items that arrived in a certain length of time.

## block

---

Reusable module that generates or responds to events. You can import and use one or more blocks in a scenario. Blocks can accept input, execute some logic, and return some results. Blocks can consist of input feeds, output feeds, parameters, and operations. Apama provides standard blocks, which are described in *Developing Apama Applications*

in *Event Modeler*, "Using standard blocks". You can define additional blocks by using Apama's block editor in Software AG Designer. Also called a SmartBlock.

---

## bundle

When using Apama in Software AG Designer, a bundle is a named collection of Apama-provided objects that are required to execute a particular type of Apama application. Typically, a bundle includes EPL files, event definition files and event files, but it can include a wide range of file types such as IAF configuration files. For example, when your project includes a scenario, you add the **Scenario Service** bundle to your project. Your application then has everything it needs to execute a scenario.

---

## .cdp

File extension for Apama correlator deployment packages.

---

## CEP

Complex event processing. CEP technologies let you detect and process events derived from other events, and sequences of events with or without temporal constraints.

---

## channel

Adapter and client configurations can specify the channel to deliver events to. A channel is a string name that contexts and receivers can subscribe to in order to receive particular events. In EPL, you can send an event to a specified channel. Sending an event to a channel delivers it to any contexts that are subscribed to that channel, and to any clients or adapters that are listening on that channel.

---

## connectivity plug-in

A C++ or Java class running inside the correlator that can transform and transmit messages between the correlator and external data sources.

---

## context

Contexts allows EPL applications to organize work into threads that the correlator can concurrently execute. In EPL, `context` is a reference type. When you create a variable of type `context`, or an event field of type `context`, you are actually creating an object that refers to a context. The context might or might not already exist. You can then use the

context reference to spawn to the context or enqueue an event to the context. When you spawn to a context, the correlator creates the context if it does not already exist.

## correlator

---

Event correlation engine. The part of Apama that looks for events of interest, analyses matching events, and executes appropriate actions.

## correlator deployment package

---

A correlator deployment package (CDP) is a file that contains application EPL code in a proprietary, non-plain-text format. These files treat EPL files similarly to the way Java files are treated in JAR files. CDP files can be created by exporting from Apama projects in Software AG Designer or by using the `engine_package` utility. CDP files can be injected to the correlator just as EPL files and JAR files containing JMon applications are injected.

## correlator-integrated messaging for JMS

---

Apama's correlator-integrated messaging for JMS provides an efficient way for Apama applications to send messages and to receive JMS messages for processing. Correlator-integrated messaging for JMS also provides for reliable messaging (guaranteed delivery) and duplicate detection.

## .CSV

---

File extension (“comma separated values”) for some exported data; suitable for third party applications such as spread sheets.

## current events

---

The set of current events contains the events in the window(s) of a partition.

## custom blocks

---

In Apama query `find` blocks, `%custom` blocks contain EPL code that you write.



## **dashboard**

---

Business cockpit for controlling, receiving, and visualizing real-time updates from running scenarios.

## **Dashboard Builder**

---

GUI for creating and modifying dashboards.

## **dashboard data server**

---

Process that mediates communication between dashboards and running scenarios. The dashboard data server mediates correlator access for applet, WebStart, and local deployments. It delivers raw data from which deployed dashboards construct the visualization objects that they display.

## **dashboard display server**

---

Process that mediates communication between dashboards and running scenarios. The dashboard display server mediates correlator access for simple thin-client, Web-page deployments. It delivers already-constructed visualization objects in the form of image files and image maps, and therefore no Java plug-in is required on clients of the display server.

## **Dashboard Viewer**

---

Desktop application that supports local deployment of dashboards.

## **Data Player**

---

Apama component in Software AG Designer that lets you retrieve events that pass through the correlator. You can use the Data Player to play back stored events and use the results to develop, test, and debug scenarios.

## data view

---

Table structure that contains event fields that you specify. In EPL applications, you create data views so that you can use the Dashboard Builder to create dashboards that let you interact with your running EPL application in the correlator.

## EDA

---

Event-driven architecture. Architecture designed to take in tens of thousands of events from multiple feeds, analyze those events to detect the events of interest, and execute actions in response to relevant events.

## EPL

---

The Apama Event Processing Language (EPL) is an event-based scripting language that is an interface to the correlator. Java is the other interface to the correlator.

## event

---

An occurrence of a particular circumstance of interest at a specific time that usually corresponds to a message of some form. The message is a collection of attribute-value pairs that describe a change in an object.

## event collection

---

The process of storing events that stream through the correlator. Using Apama's Data Player in Software AG Designer, the collected events can be played back to analyze what happened or to test alternative scenario strategies. The collected events can also be exported to spreadsheet applications.

## event listener

---

An event listener observes the correlator event stream, analyzing each event in turn until it finds a sequence of events that match its event expression. When this happens, the event listener triggers, causing the correlator to execute the listener action. See also *stream listener*.

## Event Modeler

---

Apama editor in Software AG Designer that you use to define scenarios.

## event pattern

---

Specification of the event or sequence of events or aggregation that you are interested in. An event pattern can include conditions and operators.

## event template

---

Basic unit of monitoring in the correlator. An event template specifies the pattern that you want to act on. A simple scenario contains one or a few event templates. A more complex scenario can contain many event templates. Here is an example of the data that a particular event template might define:

- Instrument = IBM
- Bid Price > 93 and < 95
- Offer Price = \*
- Bid Volume > 100000
- Offer Volume = \*

## .evt

---

File extension for files that contain events.

## exception

---

An exception is an object that represents a runtime error that can be caught with a try-catch statement. In EPL, `Exception` is a reference type in the `com.apama.exceptions` namespace. See "Catching exceptions" in *Developing Apama Applications*.

## IAF

---

Integration Adapter Framework.

## Integration Adapter Framework (IAF)

---

Server component that adapters plug into for runtime invocation.

## JMon

---

Apama in-process API for Java.

## latest event

---

The latest event is the event that was most recently added to a query partition.

## listener

---

See *event listener* and *stream listener*.

## lot

---

The items produced by a single activation of a stream query. Like an auction lot, a stream query lot can contain one or more items.

## Management and Monitoring

---

An Apama service that enables centralized configuration of an Apama deployment and uses a health protocol to monitor all components in an Apama deployment. A management and monitoring console lets you configure and assess the status of the running system.

## match set

---

For a query, this is the set of events that matches the specified pattern and that causes the statements in the query `find` block to be executed. A match set always includes the latest event.

## MemoryStore

---

The MemoryStore provides an in-memory, table-based, data storage abstraction within a correlator. All EPL code running in a correlator in any context can access the data stored by the MemoryStore. In other words, all EPL monitors running in a correlator have access to the same data. The Apama MemoryStore can also be used in a distributed fashion to provide access to data stored in a MemoryStore to applications running in a cluster of multiple correlators.

## .mon

---

File extension for EPL files.

## monitor

---

A monitor contains event monitoring patterns and the responses to take when the monitor's listeners detect those patterns. You can use EPL or Java to define a monitor.

## MonitorScript

---

EPL is the new name for MonitorScript. Within the product, both EPL and MonitorScript are used and should be treated as synonymous. EPL or MonitorScript is the Apama event-based scripting language that is an interface to the correlator. Java is the other interface to the correlator.

## parameterization

---

An Apama query that defines parameters is referred to as a parameterized query. An instance of a parameterized query is referred to as a parameterization.

## parameters

---

An Apama query can define parameters and then refer to those parameters throughout the query definition. This enables a query definition to function as a template for multiple query instances, which are referred to as parameterizations.

## partition

---

In a query, a partition contains a set of events that all have the same key value. One or more windows contain the events added to each partition.

## partitioning

---

A strategy to scale Apama by deploying multiple correlator processes to spread the workload across several processors and/or machines. A correlator can be used to partition incoming events, sending them to different correlators based on rules specific to your partitioning strategy.

## plug-in

---

Plug-ins are C or C++ code modules that you write to extend the capability of an Apama component. Apama provides APIs that let you write plug-ins for correlators, dashboards, and adapters.

## .qry

---

File extension for files that contain query definitions.

## query

---

A self-contained processing unit. It partitions incoming events according to a key and then independently processes the events in each partition. Processing involves watching for an event pattern and then executing a block of procedural code when that pattern is found.

## query aggregate

---

An event pattern in a query can aggregate event field values to find data based on many sets of events. Specify the `every` keyword in conjunction with the `select` and `having` clauses.

## Query Designer

---

An Apama editor in Software AG Designer for writing queries.

## query input definition

---

In a query, the `inputs` block defines one or more query input definitions. An input definition specifies an event type plus details that indicate how to partition incoming events. An input definition can also filter which events are operated on, and specify what state, or event history, is to be held.

## query instance

---

When a query has no parameters, a single instance of the query is automatically created when the query is loaded into a correlator. This instance looks for match sets in all of this query's partitions. If one or more parameters are defined for a query, when the query is loaded into a correlator, no instances are created until a set of parameter values is specified. Apama's Scenario Service then creates an instance of that query using the specified parameter values and that instance is referred to as a parameterization.

## query key

---

A query key identifies one or more fields in the events being operated on. Each input definition must specify the same key.

## query window

---

For each input, a window contains the events that are current. The query operates on only current events.

## range

---

In a query's `find` statement, a `within` clause and/or a `without` clause can specify the `between` keyword to define a range that restricts which part of the pattern the `within` or `without` clause applies to. The condition that the `between` clause is part of must occur in the range of identifiers specified in the `between` clause.

## .rtv

---

File extension for dashboard view files.

## scenario

---

An independent real-time business strategy that contains a number of states. You use Apama's Event Modeler editor in Software AG Designer to create a scenario. You inject a scenario into the correlator. You then create an instance of the scenario, which listens for a particular event. When that event occurs, the scenario performs specified actions according to the rules defined in the scenario.

## .sdf

---

File extension for scenario definition files.

## sentinel agent

---

A small process that starts and stops Apama correlators and IAF adapters on the host where it is running. A sentinel agent is necessary so that the Management and Monitoring console can start and stop components on that host.

## simulation

---

A Data Player playback session that uses persisted event data for "what if" analysis. A simulation can test what would happen with modified data or what would happen with a modified scenario.

## SmartBlock

---

See *block*.

## Software AG Designer

---

Eclipse-based GUI. When Apama is installed with Software AG Designer, you can use it for managing Apama projects, developing EPL files, developing custom blocks, and running Apama applications in test environments.

## stack trace element

---

A stack trace element is an object that describes an entry in the stack trace. A `com.apama.exceptions.Exception` object contains a sequence of stack trace elements



that show where an exception was first thrown and the calls that lead to that exception. In EPL, `com.apama.exceptions.StackTraceElement` is a reference type. See "Catching exceptions" in *Developing Apama Applications*.

## standard blocks

---

Blocks provided with Apama. You can use Apama's block editor in Software AG Designer to write additional blocks. See also *block*.

## stream

---

A conduit or channel through which items flow. An item can be an event, a location type or a simple type (boolean, decimal, float, integer, or string). The set of items flowing through the stream is often referred to as "a stream of items" and so, here, a stream represents an ordered sequence of items over time. A stream transports items of only one type. Streams are internal to a monitor.

## stream listener

---

A construct that continuously watches for items from a stream and invokes the listener code block each time new items are available.

## stream network

---

A network of stream source templates, streams, stream queries, and stream listeners. The upstream elements in the stream network feed the downstream elements to generate derived, added-value items.

## stream query

---

A query that the correlator applies continuously to one or two streams. The output of a stream query is one continuous stream of derived items.

## stream source template

---

An event template preceded by the `all` keyword. It uses no other event operators. A stream source template creates a stream that contains events that match the event template.

## Web Services Client adapter

---

The Apama Web Services Client adapter is usable across all Apama components. Interaction with the IAF is transparent to the application developer. See also *adapter*.

## window

---

In a query, for each input, a window contains the events that are current. The query operates on only current events.

When working with streams, a window is a dynamic portion of the items flowing through a stream. A window identifies which items a stream query is currently processing.

## within clause

---

In a query, a `within` clause sets the time period during which events in the match set must have been added to their windows. A pattern can specify zero, one, or more `within` clauses.

## without clause

---

In a query, a `without` clause specifies event types, which must be specified in the query's `inputs` block, whose presence prevents a match. For example, if a potential match set contains three events, it can be a match only if a type specified in a `without` clause was not added to a window after the first event or before the third event. Any event type that can be used in the `find` pattern can be used in the `without` clause.