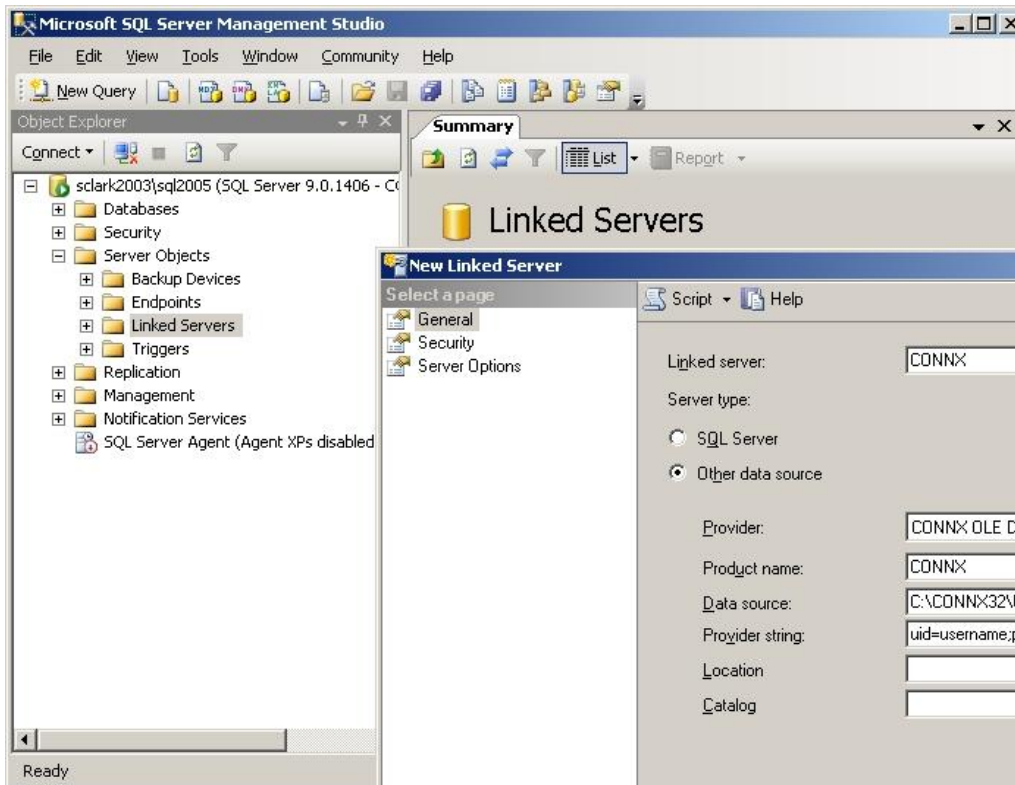


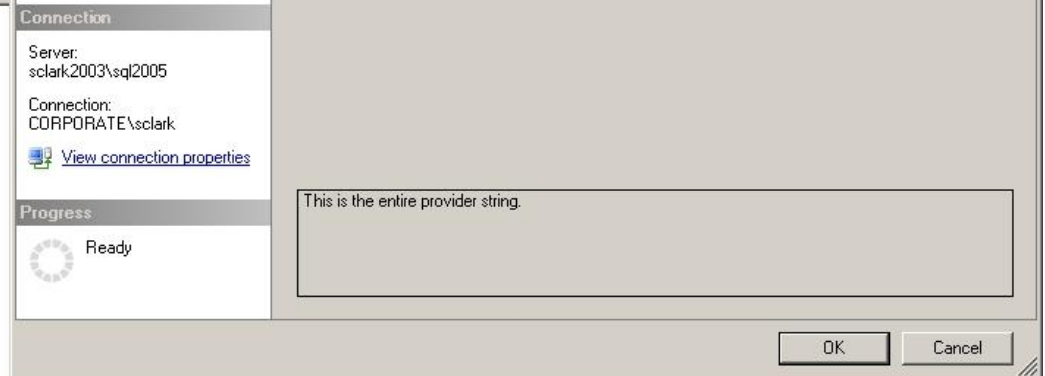
Use the Microsoft SQL Server 2005/2008 Linked Servers utility to gain live access to data stored in a CONNX Data Dictionary (CDD).

1. In **SQL Server 2005/2008** open **SQL Server Management Studio**. Select a server under the **Object Explorer**, and then expand the **Server Objects** folder. Right-click **Linked Servers** and select **New Linked Server**. The **Linked Server Properties** dialog box will appear.



2. Create a name for your new linked server in the **Linked server** text box. Select the **Other Data Source** option, and then select **CONNX OLE DB Provider** from the **Provider Name** drop-down list.

3. Type **CONNX** into the **Product name** text box. Type the path and filename for your CONNX Data Dictionary into the **Data source** text box. Type a CONNX Data Dictionary user name and password in the **Provider string** text box using the following syntax:  
*uid=username;pwd=password*  
It is not necessary to include a Location or Catalog.



On the left-hand side under **Select a page**, click **Server Options** and set the set **Data Access** to True.

4. Expand **Providers** under **Linked Servers** and right click on **CONNXOLEDB**. Select **Properties**. The **Provider Options** dialog box will appear. Select the **Level zero only**, **Allow inprocess**, and **Non transacted updates** options

5. The CONNX linked server will now be added to the list of **Linked Servers** in the **Management Studio** window. To verify that the **Linked Server** is configured correctly select **New Query** and type a query similar to the one below:

	customerid	customername	customeraddress	customercity	customerstate	customerzip	customercountry	customerp
1	ALWAD	Always Open Quick Mart	77 Overpass Ave.	Provo	NULL	84604	USA	(801) 555-
2	BABUJ	Babu Ji's Exports	Box 29938	London		Wx1 5LT	UK	(71) 555-
3	BERGS	Bergstad's Scandinavian Grocery	41 S. Marlon St.	Seattle		98104	USA	(206) 555-
4	BLUEL	Blue Lake Deli & Grocery	210 Main St.	Port Townsend		98368	USA	(206) 555-
5	BLUMG	Blum's Goods	143 Blum Rd.	London		NW1 2BP	UK	(71) 555-

Query executed successfully. sclark.2003\sql2005 (9.0 RTM) CORPORATE\sclark (55) master 00:00:00 62 rows