

Adabas System Coordinator

Web Interface

Version 8.2.6

December 2016

This document applies to Adabas System Coordinator Version 8.2.6.

Specifications contained herein are subject to change and these changes will be reported in subsequent release notes or new editions.

Copyright © 2016 Software AG, Darmstadt, Germany and/or Software AG USA, Inc., Reston, VA, USA, and/or its subsidiaries and/or its affiliates and/or their licensors.

The name Software AG and all Software AG product names are either trademarks or registered trademarks of Software AG and/or Software AG USA, Inc. and/or its subsidiaries and/or its affiliates and/or their licensors. Other company and product names mentioned herein may be trademarks of their respective owners.

Detailed information on trademarks and patents owned by Software AG and/or its subsidiaries is located at <http://softwareag.com/licenses>.

Use of this software is subject to adherence to Software AG's licensing conditions and terms. These terms are part of the product documentation, located at <http://softwareag.com/licenses/> and/or in the root installation directory of the licensed product(s).

This software may include portions of third-party products. For third-party copyright notices, license terms, additional rights or restrictions, please refer to "License Texts, Copyright Notices and Disclaimers of Third-Party Products". For certain specific third-party license restrictions, please refer to section E of the Legal Notices available under "License Terms and Conditions for Use of Software AG Products / Copyright and Trademark Notices of Software AG Products". These documents are part of the product documentation, located at <http://softwareag.com/licenses> and/or in the root installation directory of the licensed product(s).

Use, reproduction, transfer, publication or disclosure is prohibited except as specifically provided for in your License Agreement with Software AG.

Document ID: COR-OS-ONLINE-SERVICES-826-20161215

Table of Contents

1 Web Interface	1
Using the Browser	2
Defining Computers	4
Defining Groups	5
Defining Computers Where a Group Will Run	6
Defining Daemons to run on Computers within a Group	7
Defining a Service to run in a Daemon	8
Display Daemon (and Service) Status	9
Start and Stop Product Services in a Daemon	10

1 Web Interface

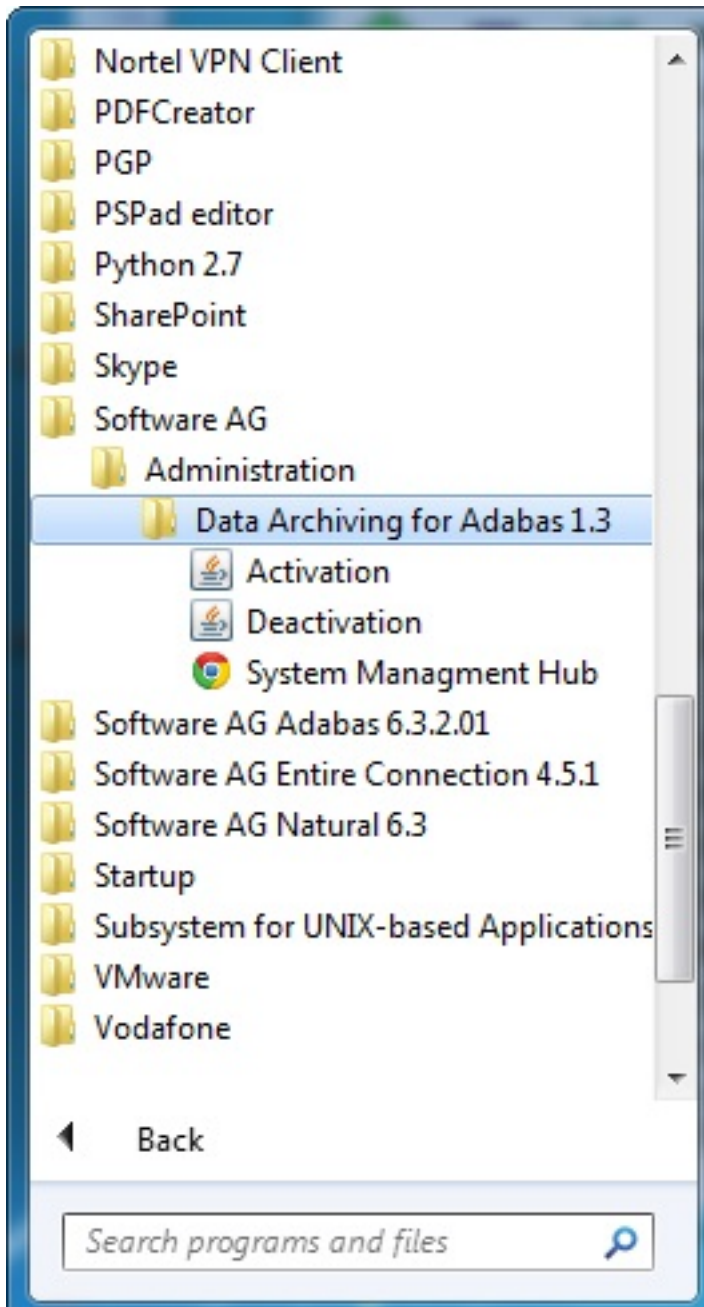
▪ Using the Browser	2
▪ Defining Computers	4
▪ Defining Groups	5
▪ Defining Computers Where a Group Will Run	6
▪ Defining Daemons to run on Computers within a Group	7
▪ Defining a Service to run in a Daemon	8
▪ Display Daemon (and Service) Status	9
▪ Start and Stop Product Services in a Daemon	10

This chapter describes the administrative tasks that you can perform with the Adabas System Coordinator for Open Systems graphical user interface.

Using the Browser

Adabas System Coordinator for Open Systems is maintained and monitored using Software AG's cross-product and cross-platform product management framework System Management Hub (SMH). If you are not familiar with using SMH, please refer to the SMH documentation for further information.

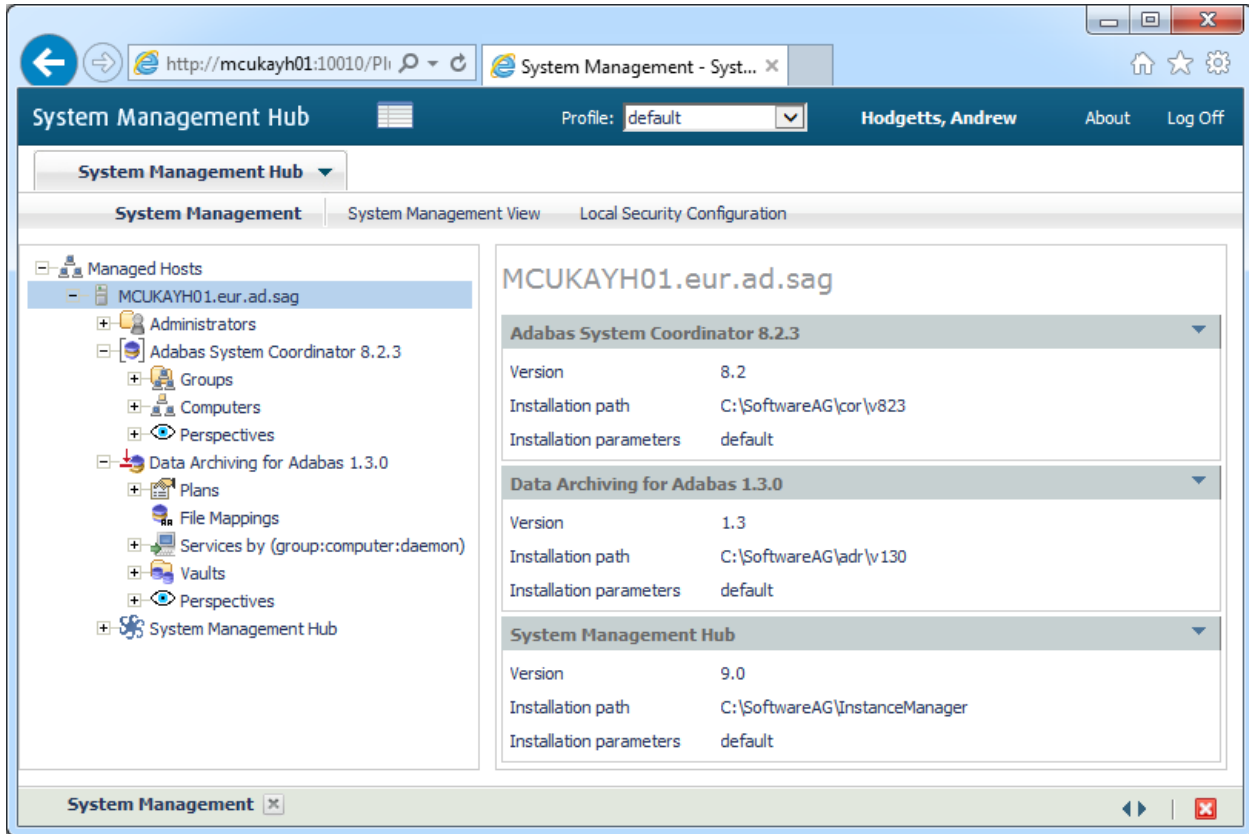
If System Management Hub is available on your local machine, the install process creates a Start Menu entry; an example screen shot follows:



If no Start Menu entry is available, go to your browser and use <http://localhost:10010/smh> (assuming defaults have been used for the System Management Hub install) or use your normal entry to the System Management Hub.

The SMH screen is divided into two frames: the navigation frame on the left; and the content frame on the right. You can navigate within the navigation tree using expand (+) and minimize (-), selecting an object and then left clicking or right clicking on the object depending on the type of operation you wish to perform.

The following is a typical SMH screen:



Defining Computers

Each computer where Adabas System Coordinator for Open Systems is to be installed and run must be defined. This is usually performed automatically during the installation so take great care if you are altering these definitions manually. Without a full definition of a computer, other Adabas System Coordinator components will not run (on that computer).

➤ To define a new Computer:

- 1 Select and right click the *Computers* node within the Adabas System Coordinator navigation tree, then select *Add Computer*. The Add Computer window will appear.

Enter the following information for the new Computer:

Field	Description
Node (Short) Name	1-32 characters to be used as the name for the Computer. This is the name that will appear under the <i>Computers</i> node within the Adabas System Coordinator navigation tree and in selectable drop-down boxes where appropriate. Names are case-sensitive, the first character must be alphabetic, all other characters can be either alphabetic or numeric. The only special character permitted is underscore.
Fully Qualified Hostname	The fully qualified hostname of the computer being defined.
Description	A free-form text description.

- 2 Click the *Add Computer* button to add the new Computer.

Defining Groups

A Group represents a logical network where related Adabas System Coordinator components are to run. The extent of the network is chosen by you according to where related Adabas System Coordinator components (and the sibling products that dock into them) are to run. An Adabas System Coordinator group can run within a single computer or across as many computers as you wish.

➤ To add a new Group:

- 1 Select and right click the *Groups* node within the Adabas System Coordinator navigation tree, then select *Add Group*. The Add Group window will appear.

Enter the following information for the new Group:

Field	Description
Short Name	1-32 characters to be used as the name for the Group. This is the name that will appear under the <i>Groups</i> node within the Adabas System Coordinator navigation tree and in selectable drop-down boxes where appropriate. Names are case-sensitive, the first character must be alphabetic, all other characters can be either alphabetic or numeric. The only special character permitted is underscore.
Description	A free-form text description.

- 2 Click the *Add Group* button to add the new Group.

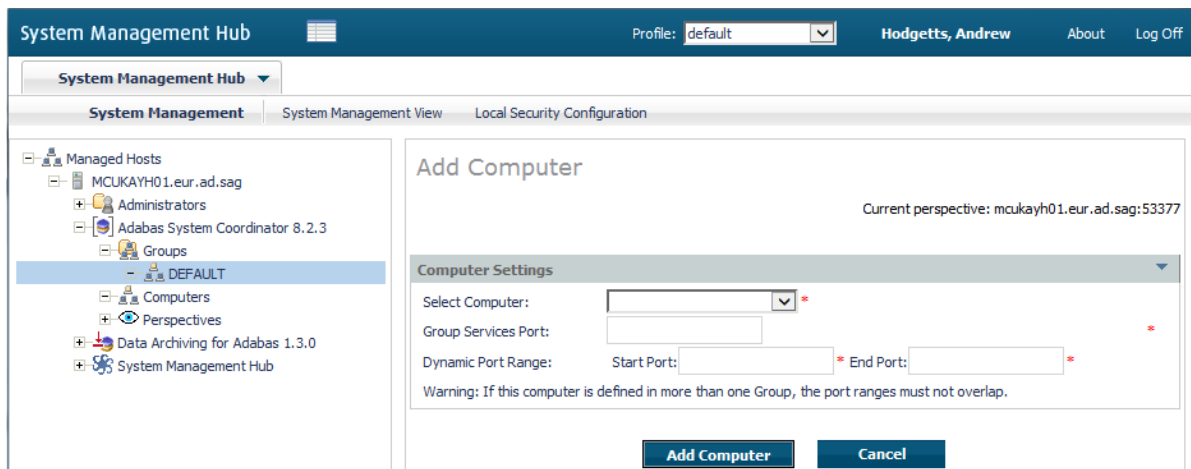
Defining Computers Where a Group Will Run

You must define the list of computers that represent the scope of the Group. This may be a subset of the Computers defined earlier, from one computer up to as many as are defined.

Multiple Groups may be defined that run on partly the same, wholly the same or completely different lists of computers – it is your choice where each group is to run.

➤ **To add a new Computer where the Group is to run:**

- 1 Select and right click on a *Group* that already exists, then select *Add Computer*. The following window will appear:



- 2 Enter the following information:

Field	Description
Select Computer (drop-down list)	A drop-down list of all the Computers not yet defined for this Group will appear. Select the one you wish the Group to run on.
Group services port	This port is used for Group communications within and across Computers. The default is 53376.
Dynamic port range	These ports are used between components within and across Computers. The default range is 53377 to 53399.

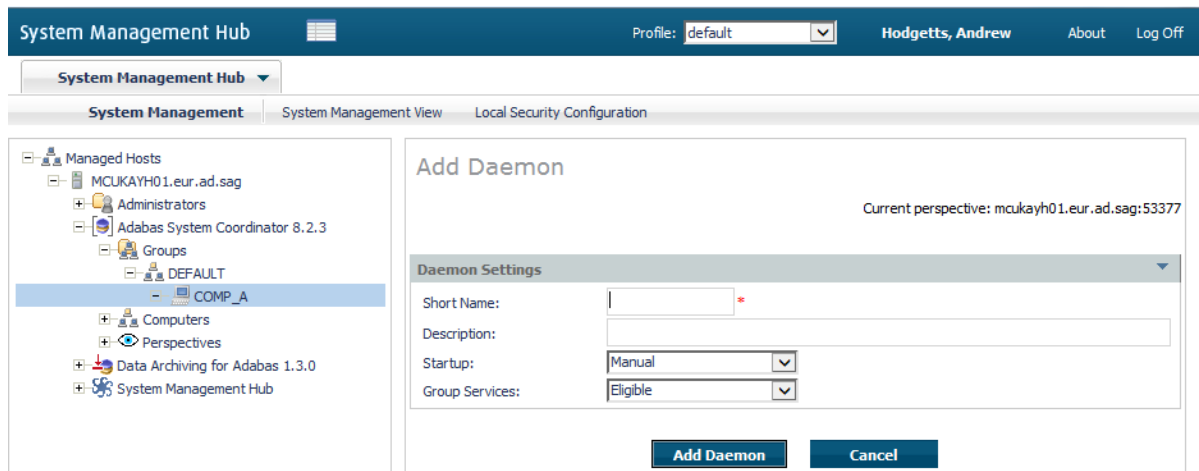
- 3 Click the *Add Computer* button to add the Computer to the Group.

Defining Daemons to run on Computers within a Group

A Daemon is the runtime component of Adabas System Coordinator which enables products to run as Services. By defining a daemon to run on a particular computer you are enabling sibling product services to also run on that computer. One or more daemons may be defined to run on a computer allowing different products to run separately or together in the same daemon.

➤ To add a new Daemon to run on a Computer within a Group:

- 1 Select and right click on a *Computer* that already exists within a Group, then select *Add Daemon*. The following window will appear:



- 2 Enter the following information:

Field	Description
Short name	1-32 characters to be used as the name for the Daemon. This is the name that will appear under the selected Computer name within the selected Group. Names are case-sensitive, the first character must be alphabetic, all other characters can be either alphabetic or numeric. The only special character permitted is underscore.
Description	A free-form text description.
Startup	Manual: The Daemon will not start until you tell it to do so. Automatic: The Daemon will be started (and restarted as appropriate) automatically if possible.
Group services	Eligible: The Daemon will be eligible to act as the leader of the Group, handling group communications (etc). At least one Daemon must be able to act in this way within a Computer. The first eligible Daemon to start up will become the leader. Other eligible Daemons will automatically become the leader if the existing leader is terminated or fails.

Field	Description
	Ineligible: The Daemon will not act as Group leader.

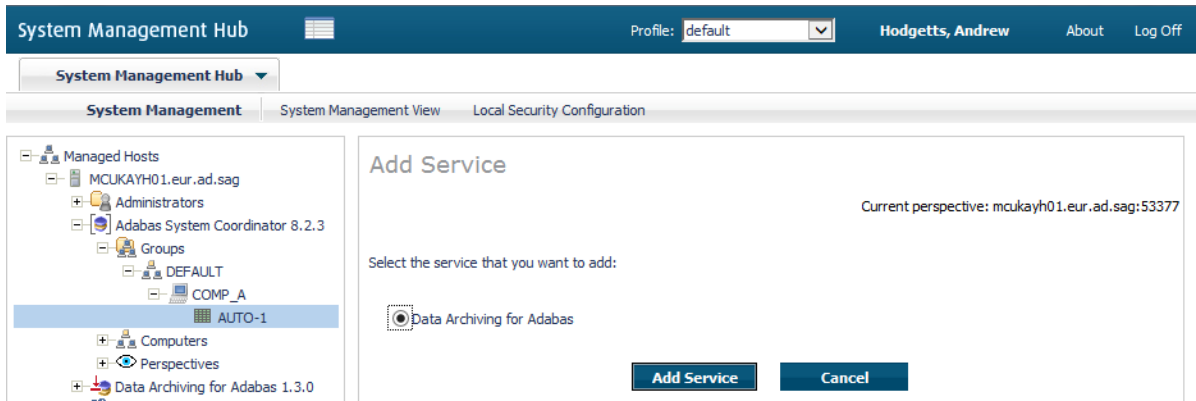
- 3 Click the *Add Daemon* button to add the Daemon.

Defining a Service to run in a Daemon

Various product services run within a Daemon. You can choose to run multiple services within one Daemon or you can chose to define multiple Daemons and run one service within each.

➤ To add a new Service to a Daemon in a Computer within a Group:

- 1 Select and right click on a *Daemon* that already exists, then select *Add service*. The following window will appear:



- 2 Enter the following information:

Field	Description
Data Archiving for Adabas (button)	Select that Data Archiving for Adabas is to run in this Daemon.

- 3 Click the *Add Service* button to add the Service.

Display Daemon (and Service) Status

➤ To display daemon (and service) status:

- 1 Select a *Daemon* that already exists, the following window will appear:


The screenshot shows the System Management Hub interface. The top navigation bar includes 'System Management Hub', a profile dropdown set to 'default', the user name 'Hodgetts, Andrew', and links for 'About' and 'Log Off'. The main content area is titled 'System Management' and contains a tree view on the left and a detailed view on the right. The tree view shows a hierarchy: Managed Hosts > MCLKAYH01.eur.ad.sag > Administrators > Adabas System Coordinator 8.2.3 > Groups > DEFAULT > COMP_A > AUTO-1. The detailed view on the right is titled 'Group: DEFAULT Computer: COMP_A Daemon: AUTO-1' and shows the following information:

- Daemon Settings:** Short Name: DAEMON, Description: -, Startup: Automatic, Group Services: Eligible, Last Modified At: 2013/10/08 08:06:20 (GMT+01:00), Last Modified By: MCLKAYH0.
- Daemon Service(s):** A table with columns for Status, Service, Start, Stop, and Delete. One service is listed: 'Data Archiving for Adabas' with a green traffic light icon in the Status column.
- Daemon Status:** Status: Running, Current Port: 53377, Group Leader: This Daemon is currently the Group leader., Start Time: 2013/10/08 08:06:19 (GMT+01:00), End Time: (blank).

- 2 You will see:

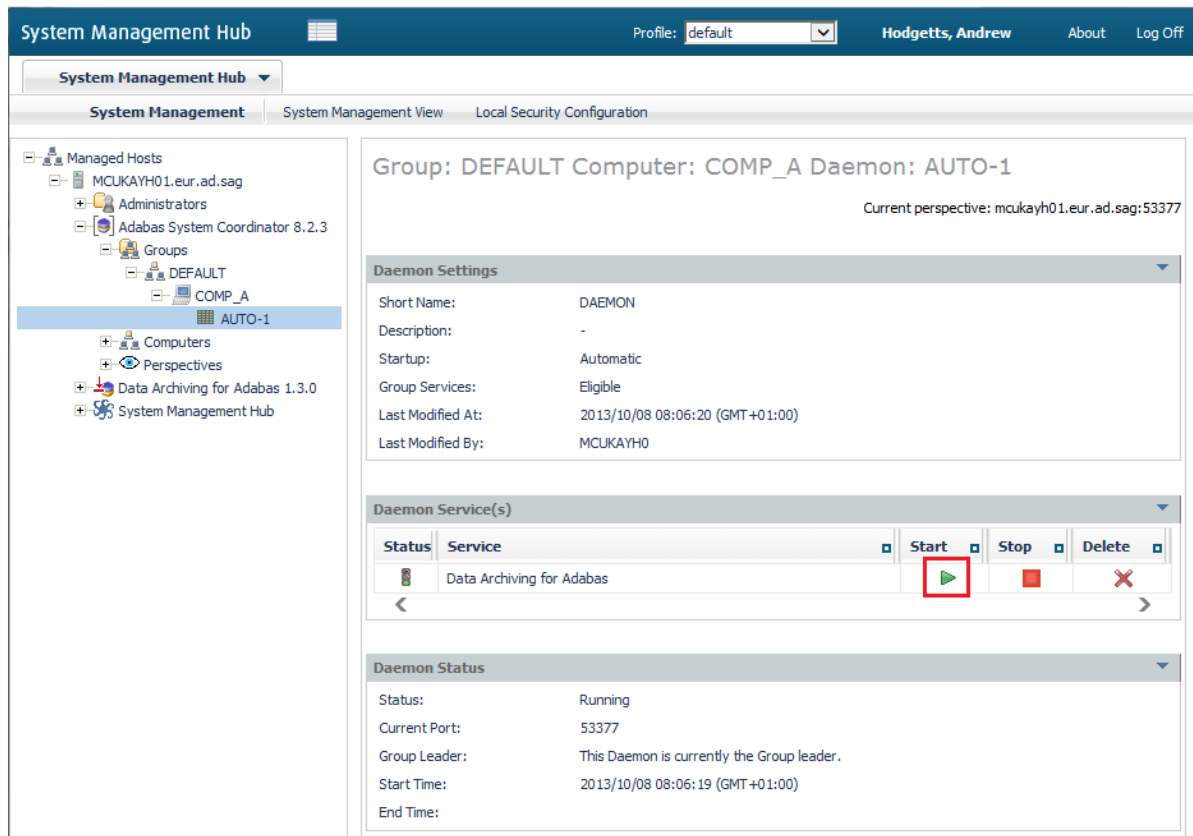
Field	Description
Daemon Settings	The configuration is displayed.
Daemon Services	The list of services is displayed with a traffic light to indicate status.
Daemon Status	Indicates whether the daemon is running or not, which dynamic port is currently being used and whether this daemon is currently acting as group leader.

Start and Stop Product Services in a Daemon

 **Note:** Services normally start and stop automatically

➤ **To start a Service that is not active:**

- Click the start button on the appropriate service:



➤ **To stop a Service that is active:**

- Click the stop button on the appropriate service:

System Management Hub

Profile: default Hodgetts, Andrew About Log Off

System Management Hub

System Management System Management View Local Security Configuration

Managed Hosts

- MCKAYH01.eur.ad.sag
 - Administrators
 - Adabas System Coordinator 8.2.3
 - Groups
 - DEFAULT
 - COMP_A
 - AUTO-1
 - Computers
 - Perspectives
 - Data Archiving for Adabas 1.3.0
 - System Management Hub

Group: DEFAULT Computer: COMP_A Daemon: AUTO-1

Current perspective: mckayh01.eur.ad.sag:53377

Daemon Settings

Short Name: DAEMON
Description: -
Startup: Automatic
Group Services: Eligible
Last Modified At: 2013/10/08 08:06:20 (GMT+01:00)
Last Modified By: MCKAYH0

Daemon Service(s)

Status	Service	Start	Stop	Delete
	Data Archiving for Adabas			

Daemon Status

Status: Running
Current Port: 53377
Group Leader: This Daemon is currently the Group leader.
Start Time: 2013/10/08 08:06:19 (GMT+01:00)
End Time:

