

Data Archiving for Adabas

Operational Hints and Guidelines

Version 1.1.1

March 2013

This document applies to Data Archiving for Adabas Version 1.1.1.

Specifications contained herein are subject to change and these changes will be reported in subsequent release notes or new editions.

Copyright © 2008-2013 Software AG, Darmstadt, Germany and/or Software AG USA, Inc., Reston, VA, United States of America, and/or their licensors.

Detailed information on trademarks and patents owned by Software AG and/or its subsidiaries is located at <http://documentation.softwareag.com/legal/>.

Use of this software is subject to adherence to Software AG's licensing conditions and terms. These terms are part of the product documentation, located at <http://documentation.softwareag.com/legal/> and/or in the root installation directory of the licensed product(s).

This software may include portions of third-party products. For third-party copyright notices and license terms, please refer to "License Texts, Copyright Notices and Disclaimers of Third-Party Products". This document is part of the product documentation, located at <http://documentation.softwareag.com/legal/> and/or in the root installation directory of the licensed product(s).

Document ID: ADR-CONFIGURATION-111-20130315

Table of Contents

Preface	v
1 Starting and Stopping Components Manually	1
Background	2
Shutting Down the Launch Controller	3
Starting the Launch Controller	7
2 Guidelines for Configuring Data Archiving for Adabas	5
Defining the Components to be used for Archiving	6
Defining Archive Plans and Vaults	7
Summary of Steps used Configuring Archiving Services	7
3 Deactivating and Uninstalling	9
Deactivating and Uninstalling in Windows and Unix	10
Deactivating and Uninstalling in z/OS	17
Deactivating and Uninstalling from the Console in Unix	23

Preface

This document provides Operational Hints and Guidelines for using Data Archiving for Adabas.

Starting and Stopping Components Manually

Guidelines for Configuring Data Archiving for Adabas

Deactivating and Uninstalling in Windows and Unix

1 Starting and Stopping Components Manually

- Background 2
- Shutting Down the Launch Controller 3
- Starting the Launch Controller 7

This section describes how to start and stop components manually rather than from the browser administration tool.

Background

The Archive service is the focal point of the runtime for archiving. This service runs inside an Adabas System Coordinator daemon. You can use the System Coordinator browser to shut down archive services within a daemon. Or, you may shutdown whole daemons. However, these components usually run 24*7.

In fact, archive services (and the daemons they run in) usually start up and shut down automatically when the operating system boots up and terminates. This is achieved by the less visible *launch control* component of Adabas System Coordinator keeping watch for which daemons (etc.) need to be started in the local computer. When you define a new archive service, daemon, etc. the launch controller will see you have done this and will start it all up automatically.

Similarly, the launch controller will automatically signal all archives services, daemons etc. to shut down when the operating system is terminating.

However, there may be occasions when you wish to do these things yourself, without recycling the operating system.

Shutting Down the Launch Controller

When you instruct the launch controller to shut down, it will automatically cause all daemons, services, etc. to shut down first; then terminate itself.

▶ To initiate launch control termination in Unix (and mainframe USS):

- 1 Go to the INSTALL sub-directory for COR.
- 2 Enter:

```
cor.sh stop
```

- 3 The rest will happen automatically.

▶ To initiate launch control termination in Windows:

- 1 Go to control panel, administrative tools, services (local).
- 2 Select the local service named **Software AG Adabas System Coordinator**

- 3 Use the *stop* click.

Starting the Launch Controller

When you instruct the launch controller to start up, it will automatically cause all daemons, services, etc. for this computer to start up too.

▶ **To initiate launch control in Unix (and mainframe USS):**

- 1 Go to the INSTALL sub-directory for COR.
- 2 Enter:

```
cor.sh start
```

- 3 The rest will happen automatically.

▶ **To initiate launch control in Windows:**

- 1 Go to control panel, administrative tools, services (local).
- 2 Select the local service named **Software AG Adabas System Coordinator**
- 3 Use the *start* click.

2 Guidelines for Configuring Data Archiving for Adabas

- Defining the Components to be used for Archiving 6
- Defining Archive Plans and Vaults 7
- Summary of Steps used Configuring Archiving Services 7

This section provides basic guidelines for configuring a data archiving environment.

Defining the Components to be used for Archiving

The first step in configuring an archiving environment is to define the components (computer network) where the archiving activities are to take place.

A major flexibility of Data Archiving for Adabas is that it can extract data from Adabas in one computer and place the data in another computer. This flexibility is needed because it is possible that the computer where Adabas is running is unable to store data into the archive (vault), either due to architecture issues or because the disks are not exposed to the (Adabas) computer or similar.

Also, even if the vault is accessible from all computers it is very likely that processing resources in the Adabas computer are very expensive and scarce so it is imperative that as much of the archive processing as possible is offloaded to a different computer, even a different architecture. Data Archiving for Adabas allows you to decide where each part of the process is to execute, and therefore how the costs will be borne within the context of your enterprise computing resources. There are some simple rules in deciding where each part of the process runs:

- The extraction from Adabas must run locally to Adabas. This makes sense because usually archiving takes many millions of records from Adabas (read, then delete), so to do this processing across network linkages is not an optimal approach.
- The accumulation into Adabas (in cases where the destination is to an Adabas file and not to the vault) must run locally to the (destination) Adabas.

So, for each archived Adabas file you must decide:

- The computer where the source Adabas file runs. The extraction (at least) from this file must run in the same computer as Adabas.
- The type of destination. Another Adabas file or the (flat file) vault.
- The computer where the destination processing is to take place. The destination processing (accumulation) can run in the same computer or in a different computer to where the source Adabas runs.

Considering these things for all the files which you wish to archive gives you a picture of a logical computer network where all your archiving activities will take place. This logical network is defined as a group using the SMH user interface for Adabas System Coordinator.

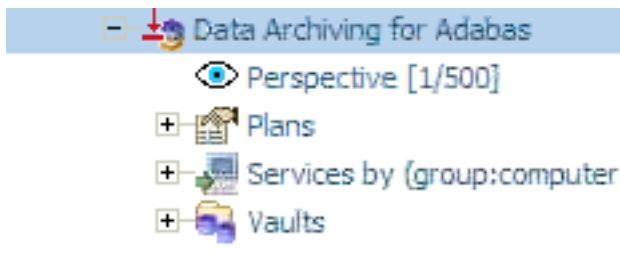


please refer to the Adabas System Coordinator documentation for more information on how to define groups.

Defining Archive Plans and Vaults

Once you have defined the group(s) you wish to operate you must then define the archiving plans and actions that will fulfill the goals you have for your archiving infrastructure. When you define the archive plan, you specify for which group the plan is to be used as well as which archive vault is to be used for the plan. You then define each action for the plan by specifying the archiving parameters to be used (extractor settings, data transfer settings, accumulator settings).

Vaults, plans and actions are managed by the Data Archiving for Adabas. You therefore use the SMH user interface for Data Archiving for Adabas for defining these components.



For more information on how to define archive plans and vaults, see [Defining Archiving Plans](#) and [Defining Vaults](#).

Summary of Steps used Configuring Archiving Services

The following provides an overall summary of the steps involved in setting up an archiving environment.

Step	Activity	SMH Interface Location	For more information ...
<i>Steps 1-5</i>	Define the archiving components using Adabas System Coordinator.		
1	Identify all computers where archiving components are to be run. If they have not yet been defined, then define them.	Adabas System Coordinator (Computers)	See Adabas System Coordinator documentation.
2	For each archiving process, define an archive group if not already defined.	Adabas System Coordinator (Groups)	See Adabas System Coordinator documentation.
3	For each archive group, define the computers that will participate in this particular group. The computers must be selected from the list of computers defined in step 1.	Adabas System Coordinator (Groups/Computers)	See Adabas System Coordinator documentation.
4	For each computer defined in step 3, define the group members that are to be run on that computer for a given archive group.	Adabas System Coordinator (Groups/Computers/Members)	See Adabas System Coordinator documentation.
5	For each member defined in step 4, define the archive service to be performed.	Adabas System Coordinator (Groups/Computers/Members)	See Adabas System Coordinator documentation.
<i>Steps 6-8</i>	Define archive vaults and archive plans using Data Archiving for Adabas.		
6	Define the vault or vaults where the archived data is to be stored. For each vault you must define the access path to the vault for each computer that will access the vault.	Data Archiving for Adabas (Vaults)	Defining Vaults
7	Define an archive plan or plans.	Data Archiving for Adabas (Plans)	Defining Archiving Plans
8	For each archive plan defined in step 7, define the actions to be used with the plan. When you define an action, you provide the archiving parameters to be used (extractor settings, data transfer settings, accumulator settings). These are the parameters which identify the specific location of the data to be extracted for archiving, when archiving is to be performed, and the specific location where the data is to be stored.	Data Archiving for Adabas (Plans/Plan Names/Actions)	Defining Archiving Plans

3 Deactivating and Uninstalling

- Deactivating and Uninstalling in Windows and Unix 10
- Deactivating and Uninstalling in z/OS 17
- Deactivating and Uninstalling from the Console in Unix 23

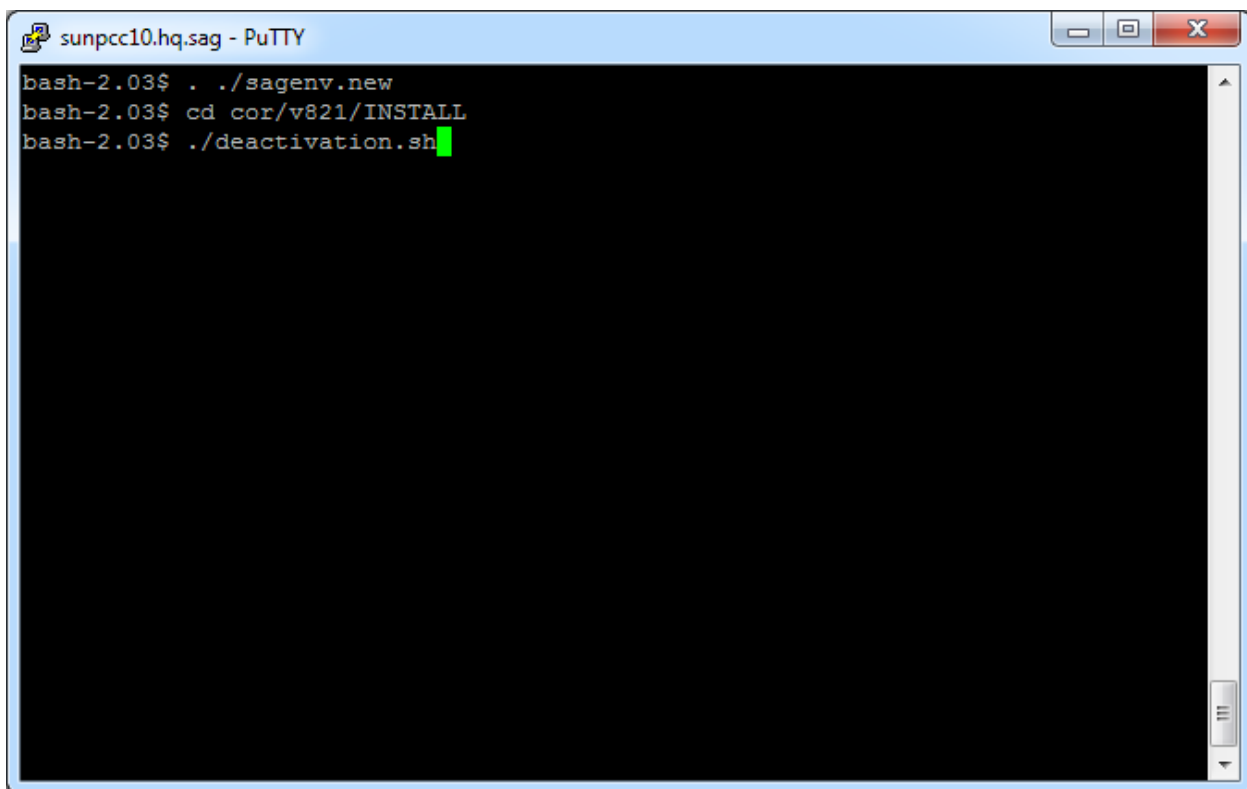
This chapter describes how to deactivate components and to optionally uninstall them too.

Deactivating and Uninstalling in Windows and Unix

Deactivation Startup

Start the Deactivation in Unix

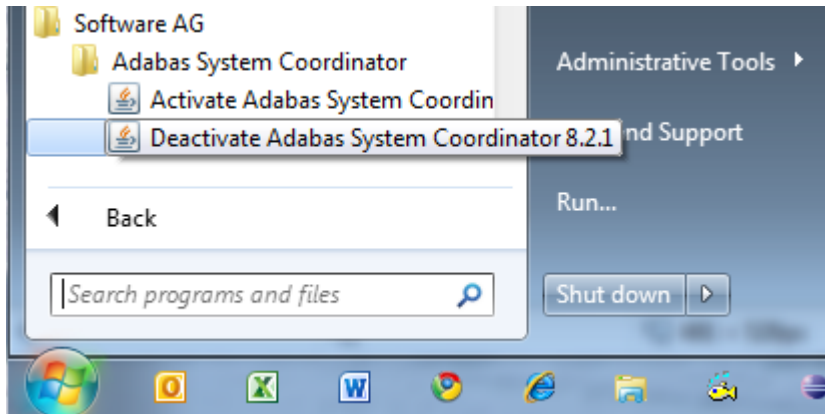
Execute the deactivation script in the install directory as follows:



```
sunpcc10.hq.sag - PuTTY
bash-2.03$ ./sagenv.new
bash-2.03$ cd cor/v821/INSTALL
bash-2.03$ ./deactivation.sh
```

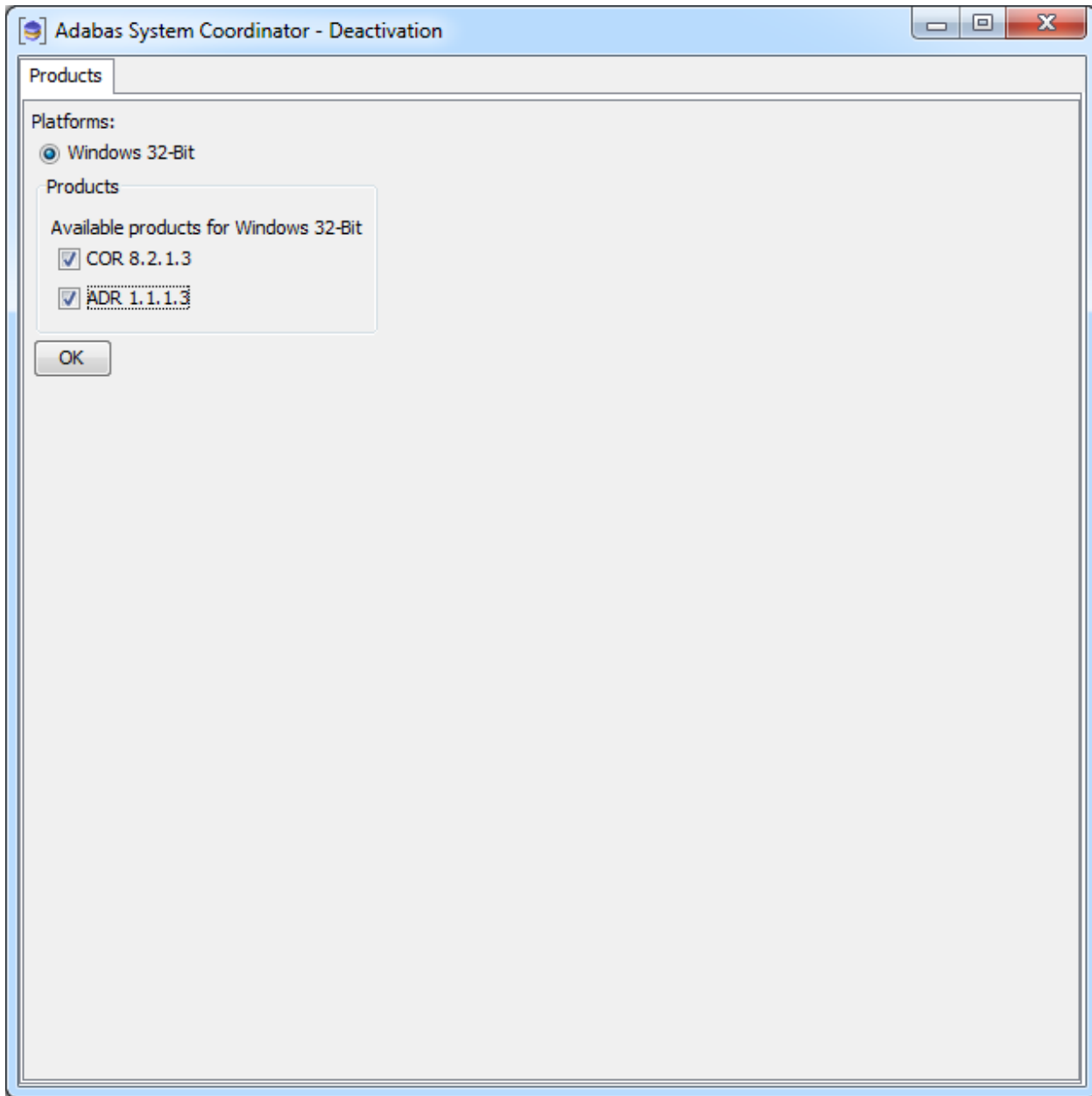
Start the Deactivation in Windows

The Installer creates a Start menu entry for deactivation; execute as follows:



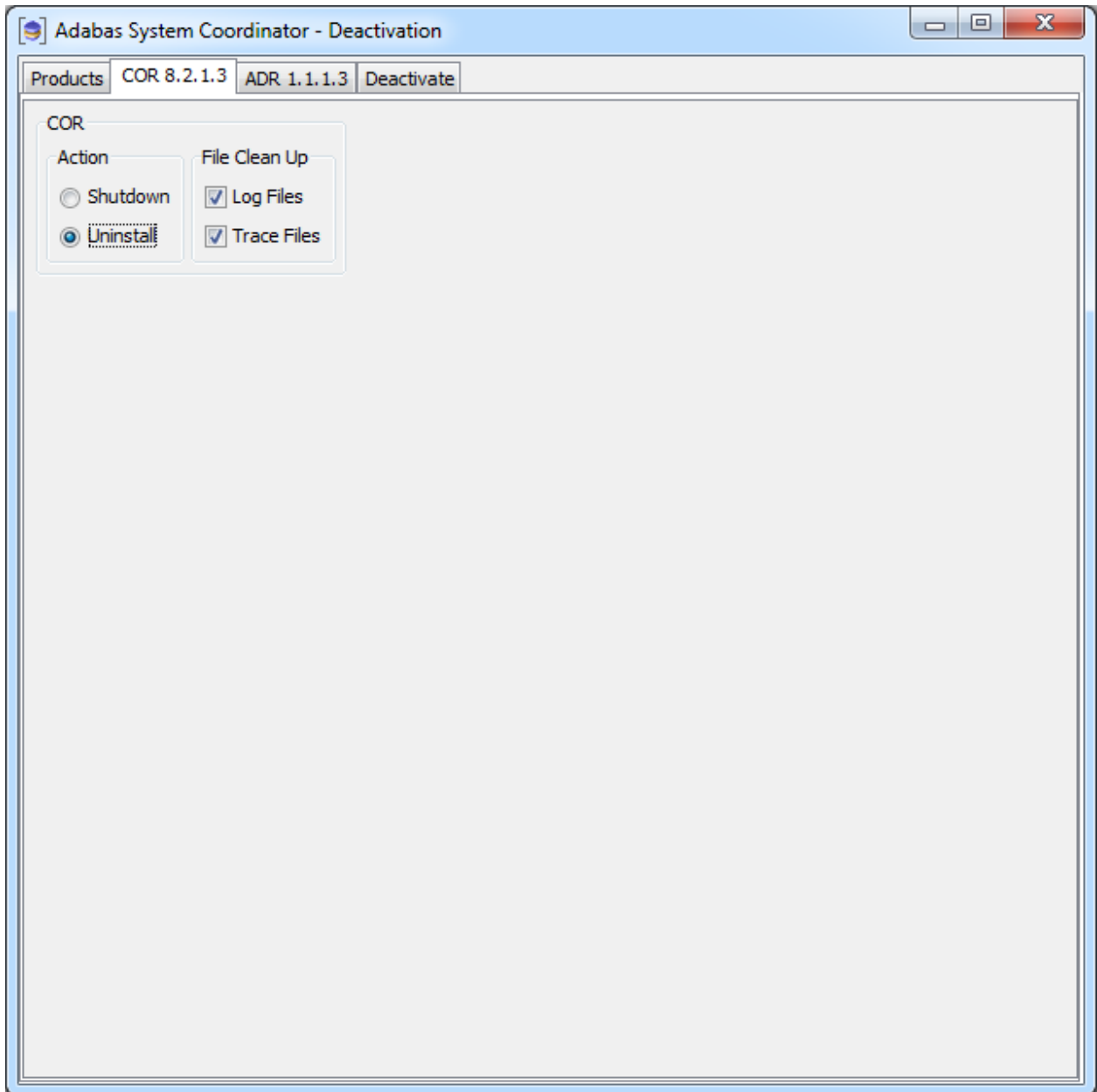
Deactivation: Choose Platform and Products

Select the platform and products you wish to deactivate or uninstall, the example below shows Windows:



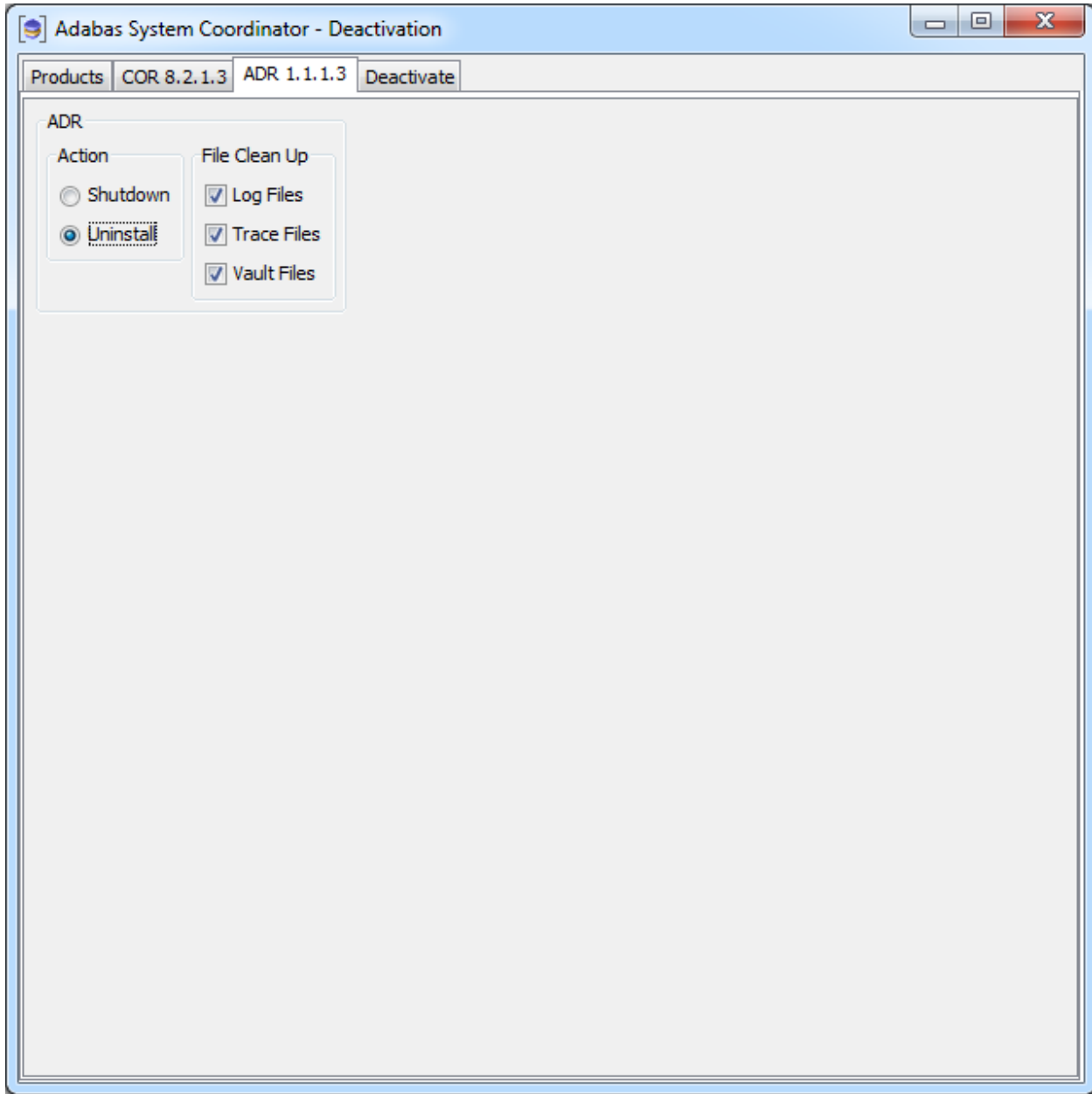
Deactivation: Adabas System Coordinator

On this tab, choose if you wish to do shutdown or if you also wish to uninstall too. In addition, indicate if log files (etc) are to be removed:



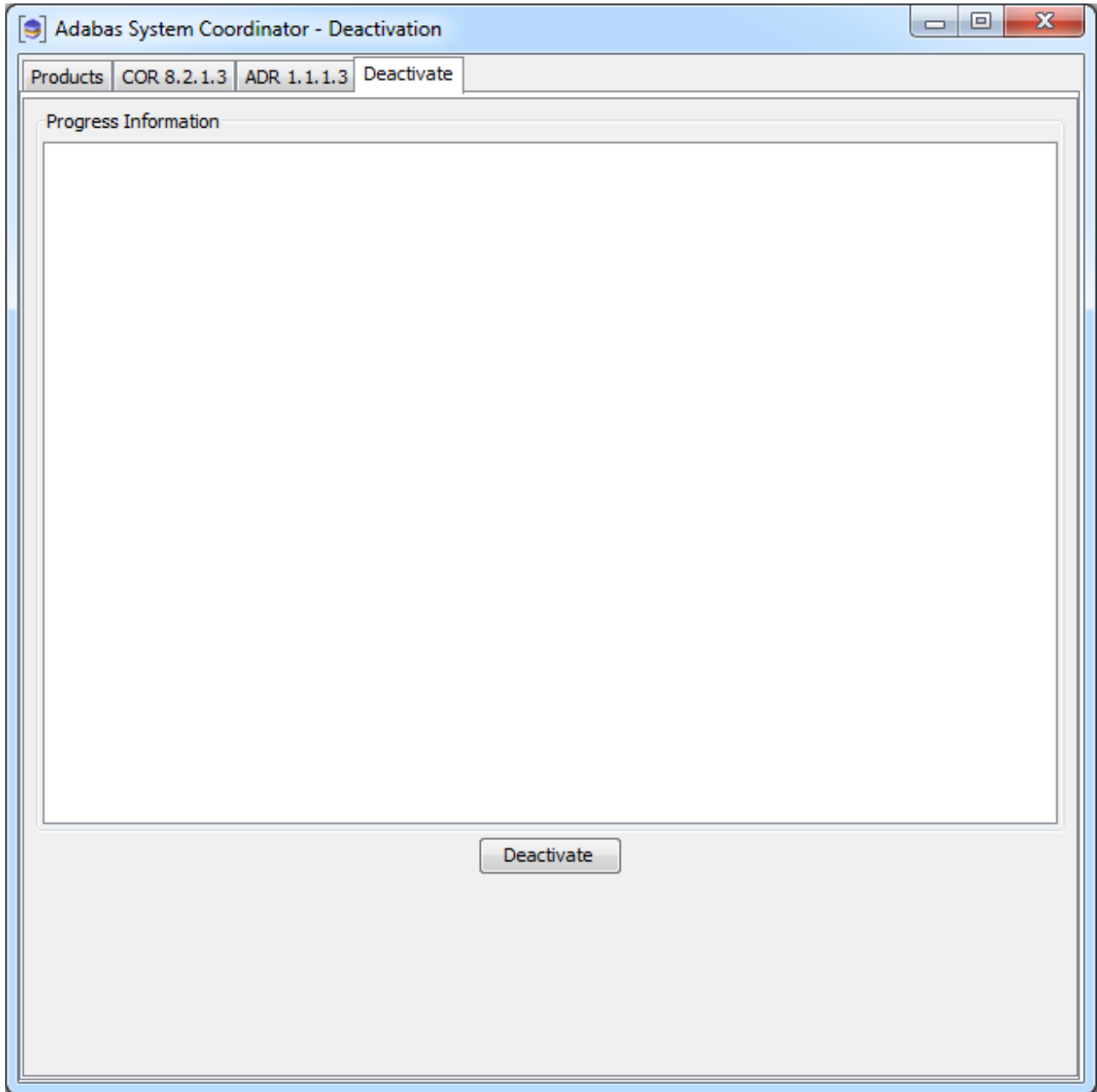
Deactivation: Data Archiving for Adabas

On this tab choose if you wish to do shutdown or if you also wish to uninstall too. In addition, indicate if log files (etc) are to be removed:

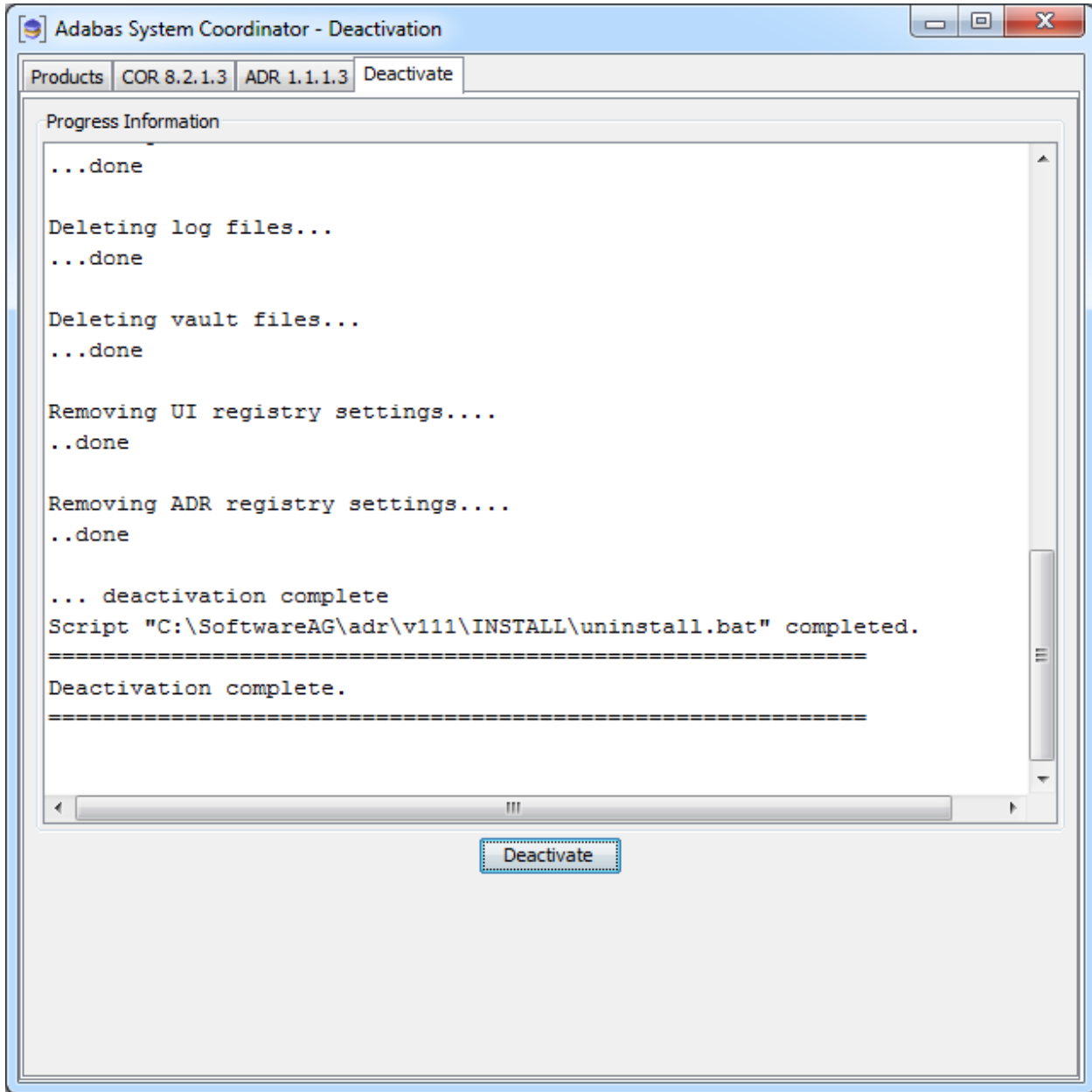


Deactivation: Execution

The *deactivation* tab shows the empty log screen where you can click to deactivate:



The *deactivation* displays log information while running, the following shows a successful run:



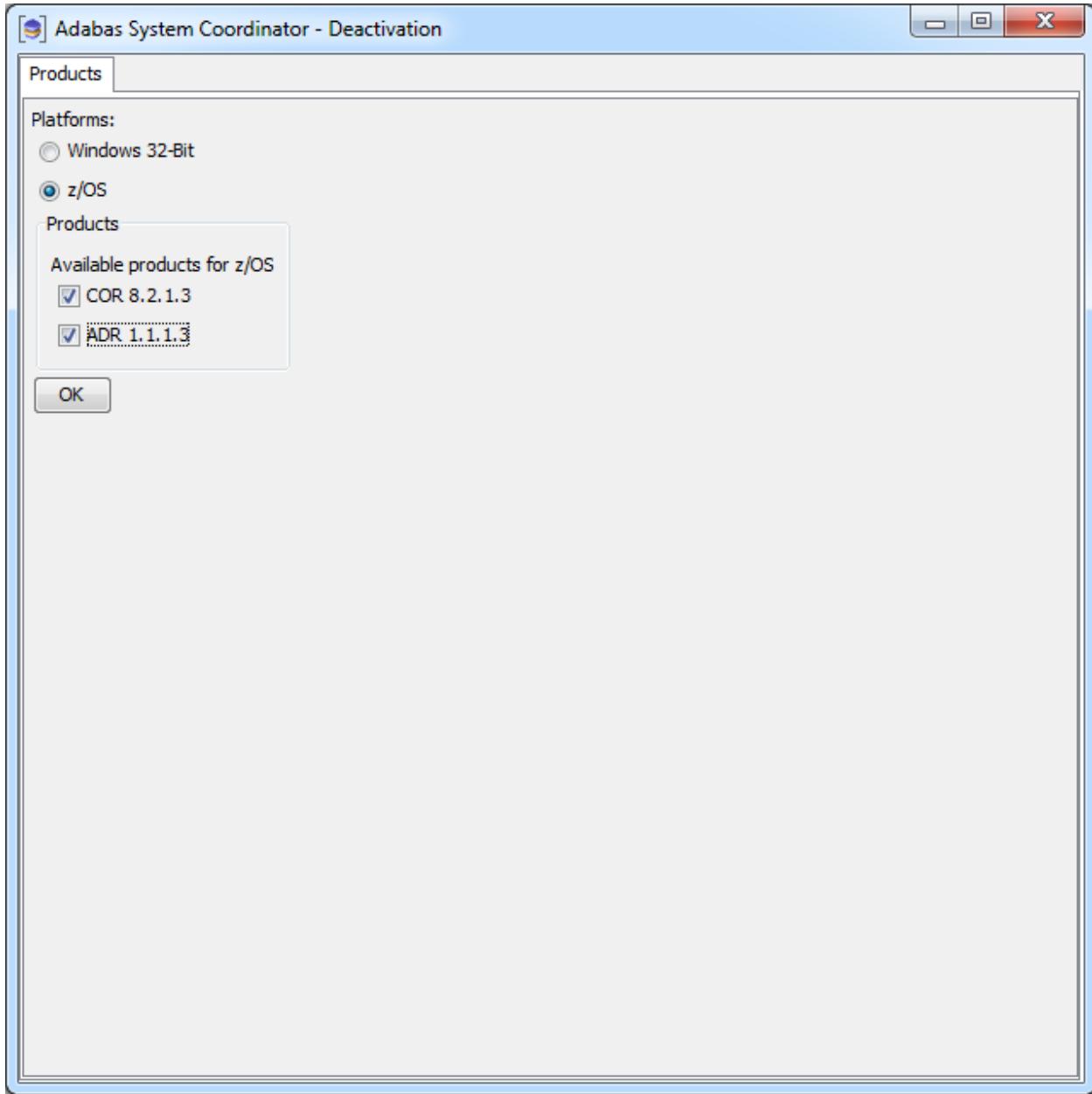
Deactivating and Uninstalling in z/OS

Deactivation Startup

The start-up is the same as in Windows or Unix above.

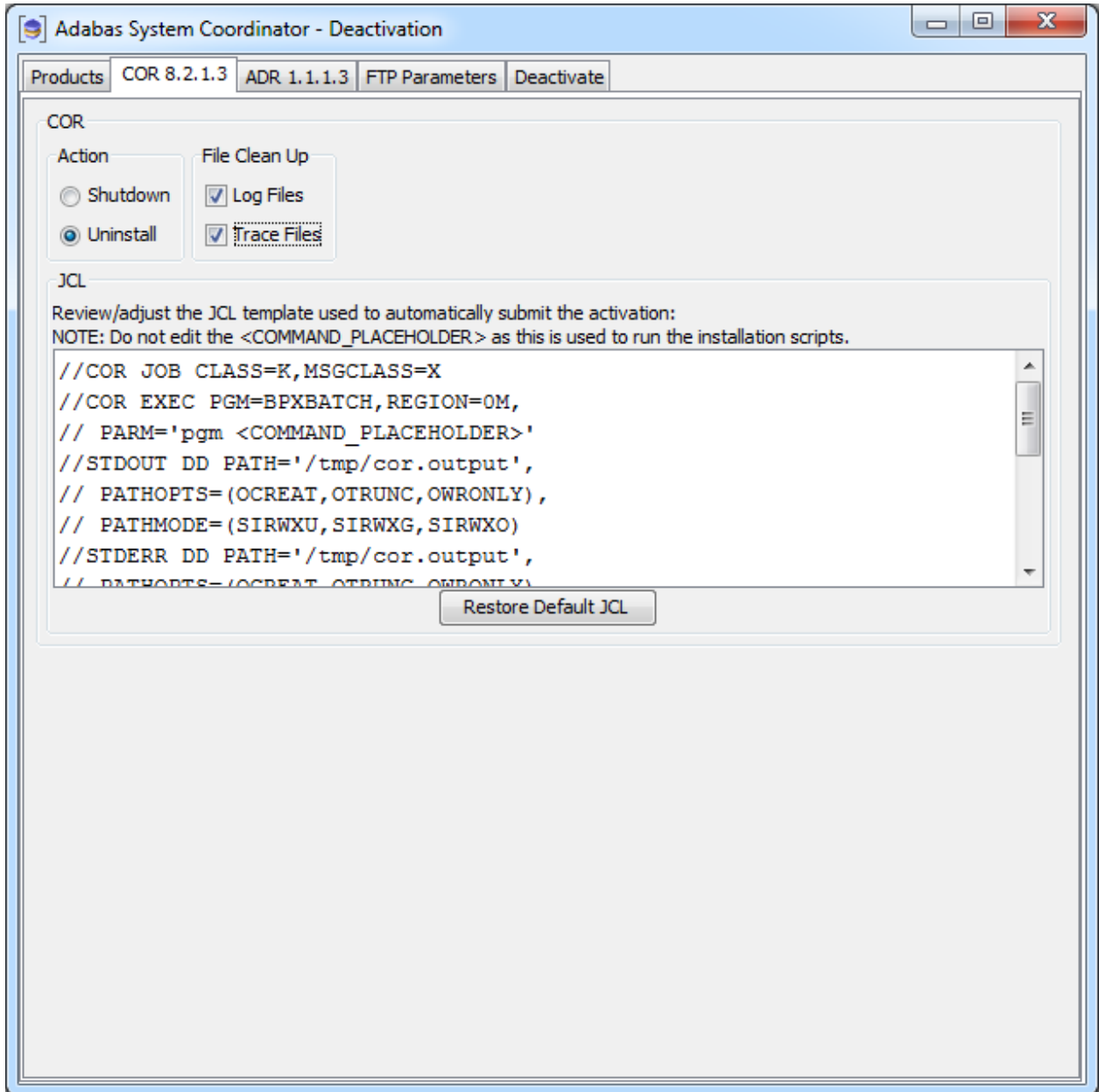
Deactivation: Choose Platform and Products

Select the platform and products you wish to deactivate or uninstall, the example below is taken from Windows:



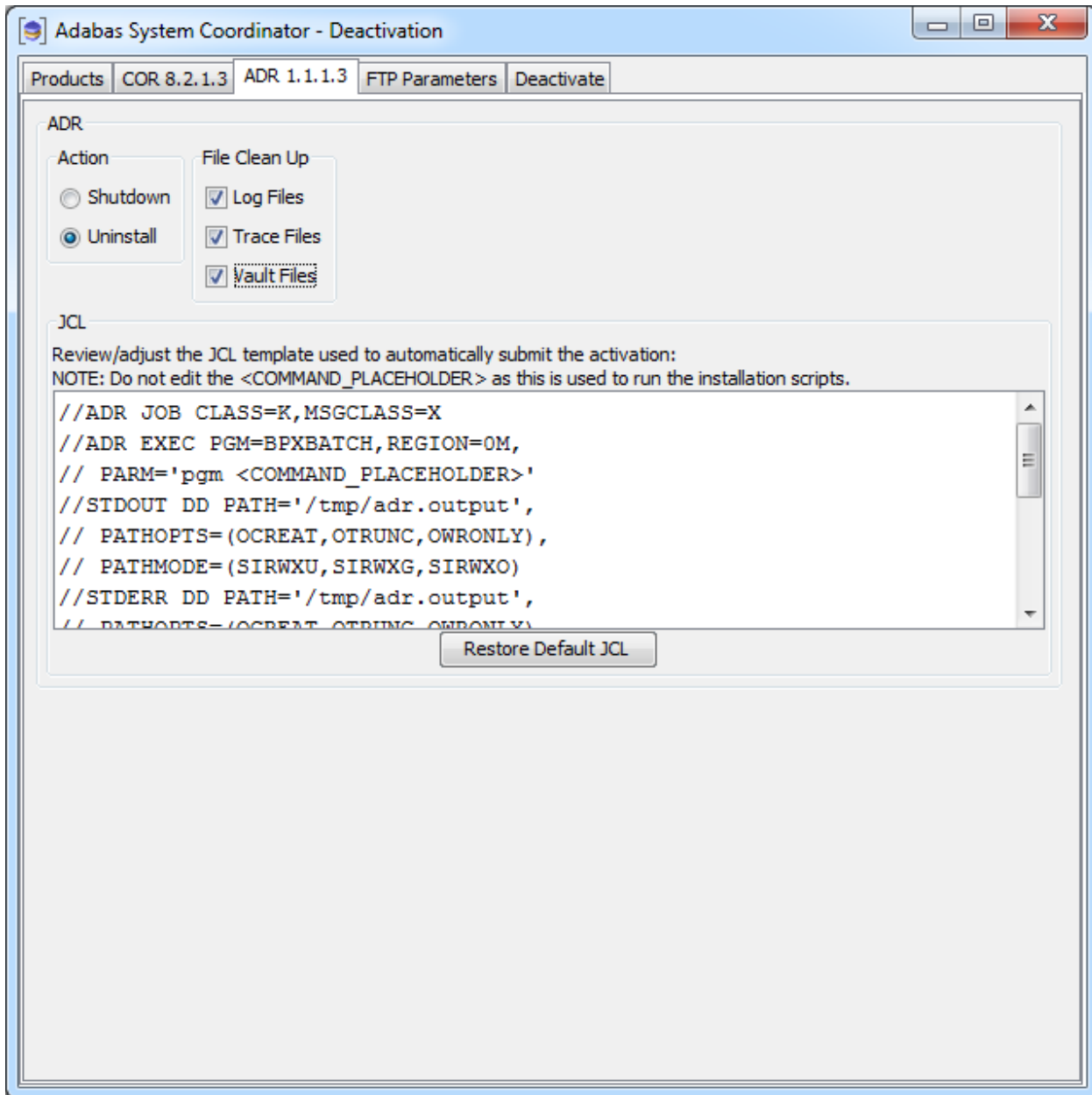
Deactivation: Adabas System Coordinator

On this tab, choose if you wish to do shutdown or if you also wish to uninstall too. In addition, indicate if log files (etc) are to be removed and adjust the JCL for your site:



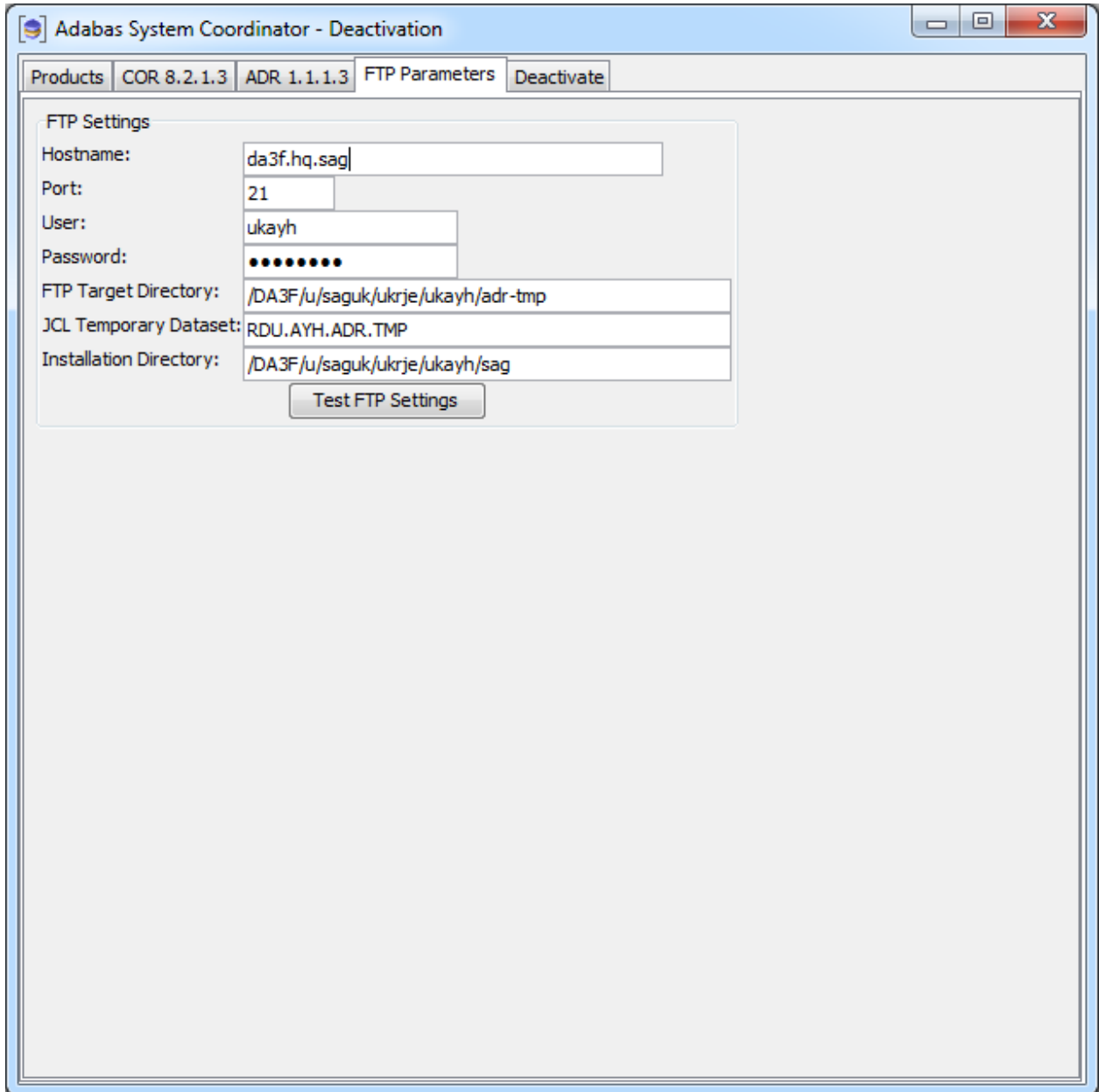
Deactivation: Data Archiving for Adabas

On this tab choose if you wish to do shutdown or if you also wish to uninstall too. In addition, indicate if log files (etc) are to be removed, and adjust the JCL for your site:



Deactivation: z/OS FTP Details

The *FTP parameters* tab requires that you supply your FTP details:



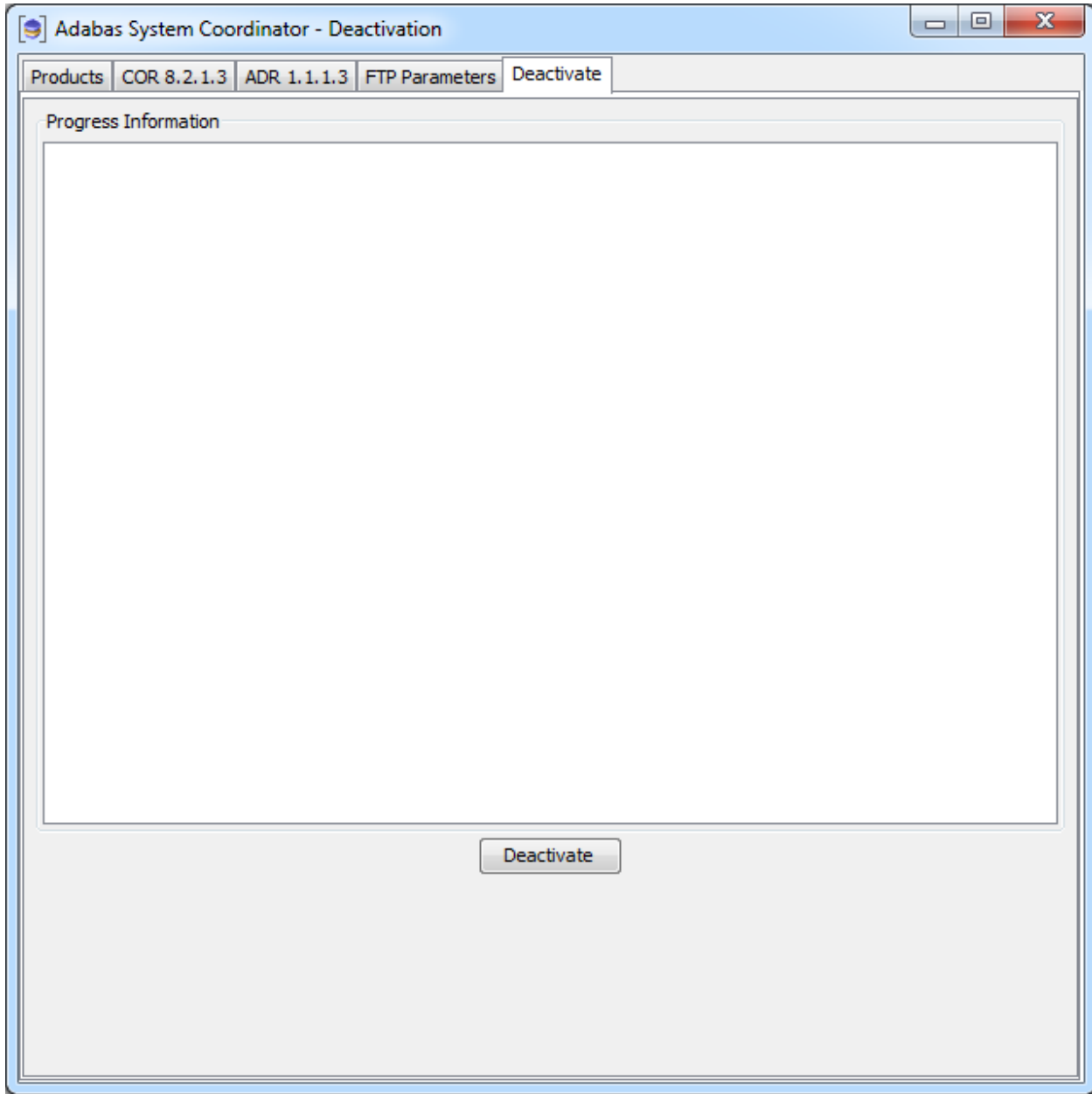
The screenshot shows a window titled "Adabas System Coordinator - Deactivation". The window has a menu bar with "Products", "COR 8.2.1.3", "ADR 1.1.1.3", "FTP Parameters", and "Deactivate". The main content area is titled ".FTP Settings" and contains the following fields:

Hostname:	da3f.hq.sag
Port:	21
User:	ukayh
Password:	●●●●●●●●
FTP Target Directory:	/DA3F/u/saguk/ukrje/ukayh/adr-tmp
JCL Temporary Dataset:	RDU.AYH.ADR.TMP
Installation Directory:	/DA3F/u/saguk/ukrje/ukayh/sag

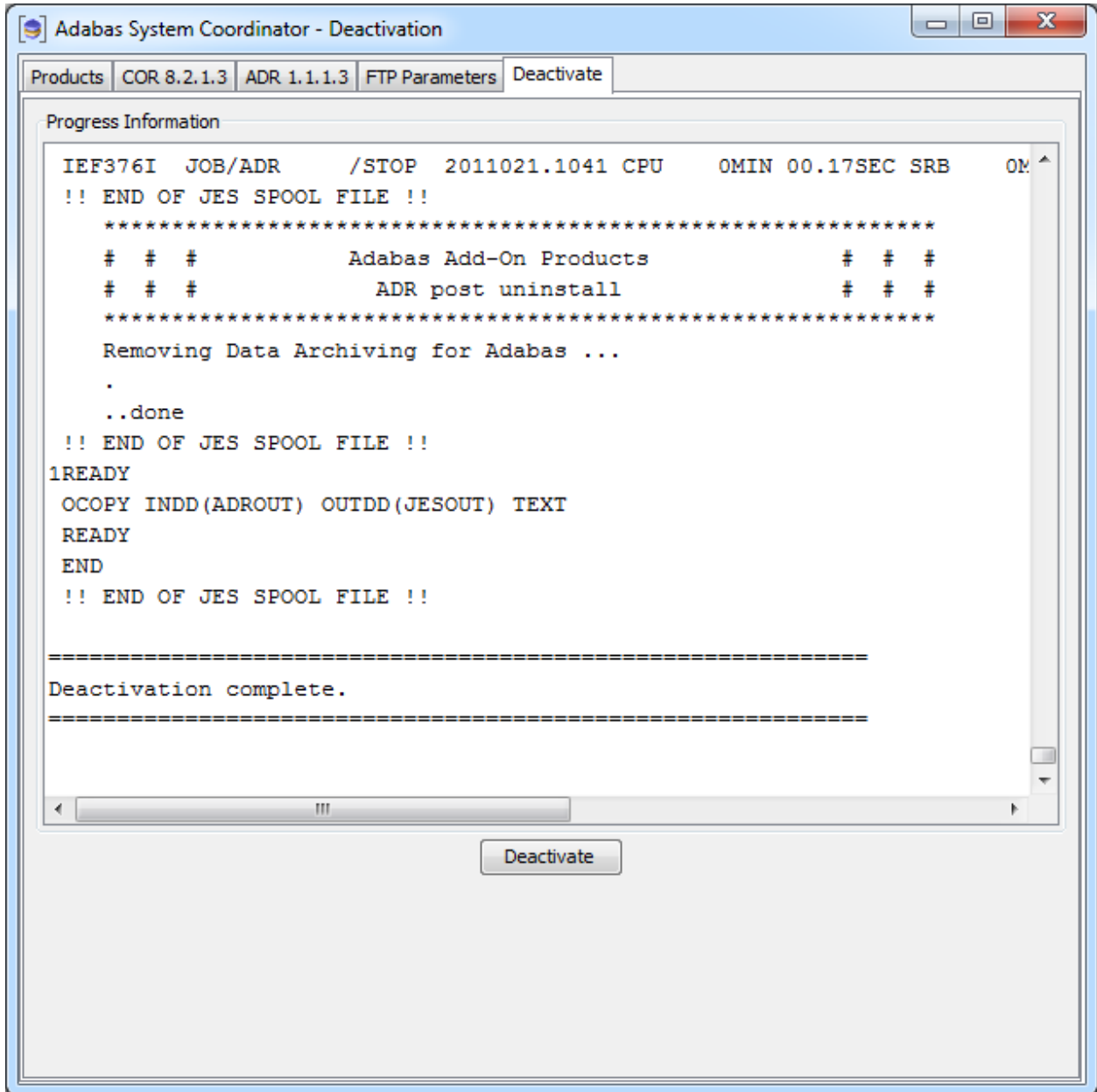
Below the fields is a button labeled "Test FTP Settings".

Deactivation: Execution

The *deactivation* tab shows the empty log screen where you can click to deactivate:

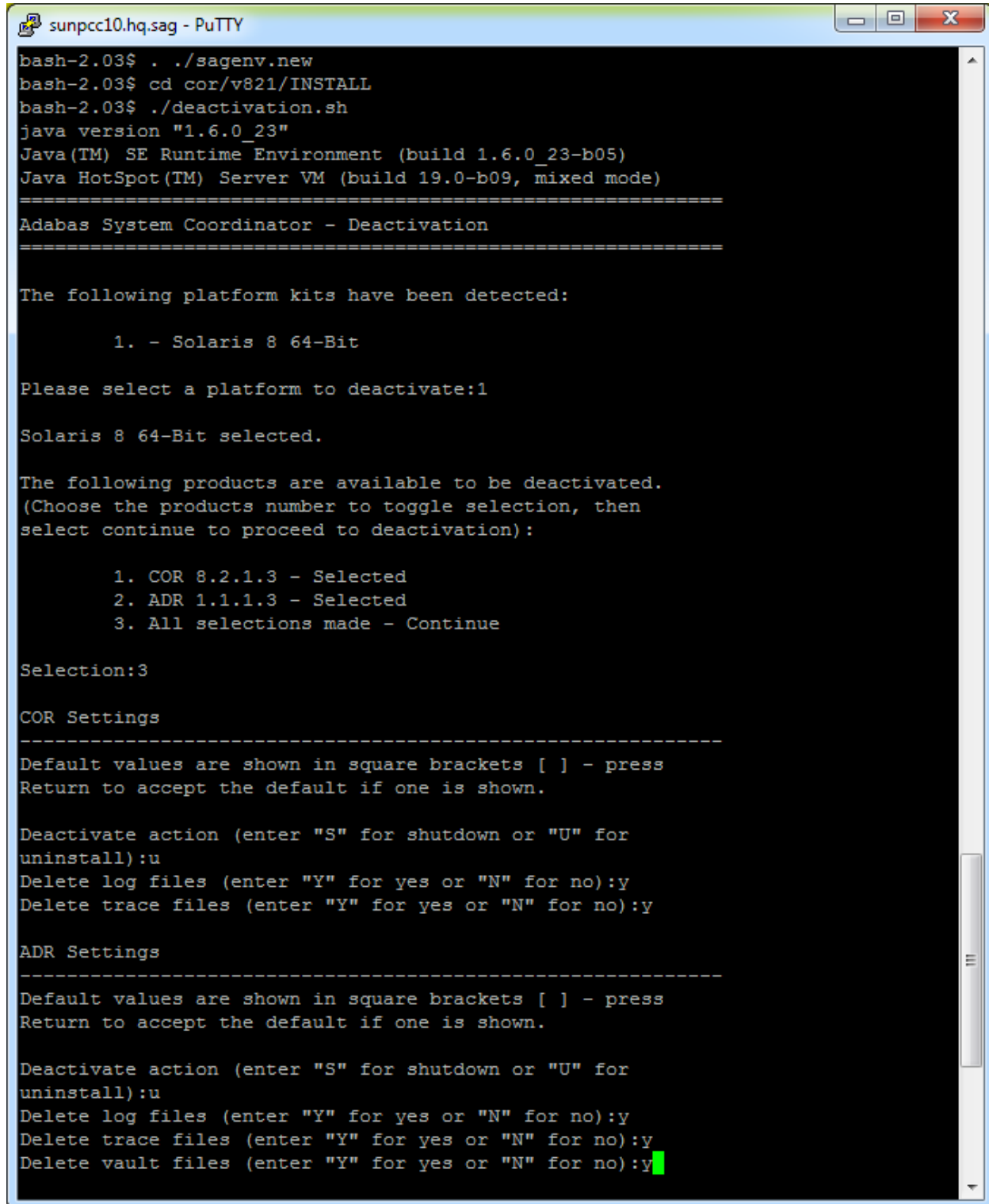


The *deactivation* displays log information while running, the following shows a successful run:



Deactivating and Uninstalling from the Console in Unix

You can perform deactivation/uninstall from the console too using the script `deactivation.sh`.



```
sunpcc10.hq.sag - PuTTY
bash-2.03$ ./sagenv.new
bash-2.03$ cd cor/v821/INSTALL
bash-2.03$ ./deactivation.sh
java version "1.6.0_23"
Java(TM) SE Runtime Environment (build 1.6.0_23-b05)
Java HotSpot(TM) Server VM (build 19.0-b09, mixed mode)
=====
Adabas System Coordinator - Deactivation
=====

The following platform kits have been detected:

    1. - Solaris 8 64-Bit

Please select a platform to deactivate:1

Solaris 8 64-Bit selected.

The following products are available to be deactivated.
(Choose the products number to toggle selection, then
select continue to proceed to deactivation):

    1. COR 8.2.1.3 - Selected
    2. ADR 1.1.1.3 - Selected
    3. All selections made - Continue

Selection:3

COR Settings
-----
Default values are shown in square brackets [ ] - press
Return to accept the default if one is shown.

Deactivate action (enter "S" for shutdown or "U" for
uninstall):u
Delete log files (enter "Y" for yes or "N" for no):y
Delete trace files (enter "Y" for yes or "N" for no):y

ADR Settings
-----
Default values are shown in square brackets [ ] - press
Return to accept the default if one is shown.

Deactivate action (enter "S" for shutdown or "U" for
uninstall):u
Delete log files (enter "Y" for yes or "N" for no):y
Delete trace files (enter "Y" for yes or "N" for no):y
Delete vault files (enter "Y" for yes or "N" for no):y
```

```

sunpcc10.hq.sag - PuTTY
Deactivating Products...
-----
Running deactivation script
"/FS/fs3042/ukayh/k3/cor/v821/INSTALL/uninstall.sh".

*****

# # #          Adabas Add-On Products          # # #
# # #          COR Deactivation                  # # #

*****

Deactivating Adabas System Coordinator ...

Running corlc process found, terminating...
Stopping Adabas System Coordinator Launch Control ...
SIGTERM 29192
Done.
Stopping Adabas System Coordinator Daemons ...
SIGTERM 29244
Done.

..termination complete
Deleting trace files.....done
Deleting log files.....done

..done
Script "/FS/fs3042/ukayh/k3/cor/v821/INSTALL/uninstall.sh"
completed.
Running deactivation script
"/FS/fs3042/ukayh/k3/adr/v111/INSTALL/uninstall.sh".

*****

# # #          Adabas Add-On Products          #
# #
# # #          ADR Deactivation                  #
# #

*****

Deactivating Data Archiving for Adabas ...
Deleting trace files.....done
Deleting log files.....done
Deleting vault files.....done

..done
Script "/FS/fs3042/ukayh/k3/adr/v111/INSTALL/uninstall.sh"
completed.
=====
Deactivation complete.
=====

bash-2.03$ █

```

