

# Menu System

This chapter covers the following topics:

- Overview
- Starting ASF
- Online Help
- Function Key Settings
- Direct Command Line
- Batch Operations
- Setting a Batch Return Code
- Absolute and Relative Date Format
- Main Menu
- General Evaluation
- Critical Report
- Critical Trend Report
- Workplan: Predefined Evaluations and Reports
- Store Nucleus Records
- Store Trend Records
- Maintain Nucleus Records
- Evaluation Profile Administration
- Profile Element: Accumulation
- Profile Element: Limits
- Profile Elements: Units
- Link Databases to Profile
- Link Files to Profile
- Store Profile Administration
- User Maintenance

- ASF Utilities and Services
- 

## Overview

The Menu System is the interactive component of ASF, and allows you to

- Generate Evaluation Reports, based on data stored by the Store Program.
- Define groups of files and databases which are to be monitored by the Store Program, and to store these definitions as Store Profiles.
- Define groups of fields, files and databases for which the stored ASF data is to be evaluated, and to store these definitions as Evaluation Profiles.
- Run the Store Program on an ad hoc basis to collect current database statistics.
- Define additional Store Types.
- List or delete records stored by the Store Program.
- Run predefined evaluations.
- Administer the user access to ASF.
- Call ASF utilities.
- Perform ASF services.

## Starting ASF

To start ASF, log on to the Natural library SYSASF and enter the command "MENU". The ASF Logo screen is displayed first.

```

10:25:44          *** A D A B A S Statistics Facility ***          2008-01-22
USERID              V e r s i o n   8.1.1                        MLOGO001

                AAAAAAAAAAAAAA          SSSSSSSSSS          FFFFFFFFFFFFFFFF
                AAAAAAAAAAAAAA          SSSSSSSSSSSS          FFFFFFFFFFFFFFFF
                AAAA      AAAA          SSSS      SSSS          FFFF
                AAAA      AAAA          SSSS          SSSS          FFFF
                AAAA      AAAA          SSSS          SSSS          FFFF
                AAAAAAAAAAAAAA          SSSS          FFFFFFFFFFFFFFFF
                AAAAAAAAAAAAAA          SSSS          FFFFFFFFFFFFFFFF
                AAAA      AAAA          SSSS      SSSS          FFFF
                AAAA      AAAA          SSSSSSSSSSSS          FFFF
                AAAA      AAAA          SSSSSSSSSS          FFFF

                ADABAS          STATISTICS          FACILITY

                A   P   R   O   D   U   C   T   O   F   S   O   F   T   W   A   R   E   A   G

                ASF Data :          1424 / 14
                ASF Profiles : 1424 / 15

```

**Figure 3-1: ASF Logo Screen**

The ASF Logo screen shows the ASF version and the file numbers of the ASF system files. You can display the ASF Logo screen from any ASF screen by typing the command `ASFLOGO` in the ASF Direct Command Line. The ASF Logo screen is not displayed when you start ASF from the Adabas Online Services (AOS).

**Note:**

If the ASF systems files are not correctly shown in the ASF Logo screen, verify the Natural LFILE settings (NTFILE parameter). As a temporary solution, you can set the logical file numbers of the ASF system files with the ASF direct command "LFILE".

## Online Help

The Menu System provides you with two kinds of help, namely passive help and active help.

### Passive Help

You activate the passive help feature by pressing PF1. If the cursor is positioned on an input field when you press PF1, a text appears on the screen giving a short description of the purpose of the field and of related information such as the required format of input data for this field. Another way of selecting passive help for a field is to place a question mark in the first position of the input field, then press ENTER.

If the cursor is not positioned on an input field, then pressing PF1 will display a general text which describes the purpose and usage of the currently selected screen.

At the bottom of each passive help screen, ASF informs you which part of the help text is currently displayed on the screen. The two numbers show the line number of the first line of the screen and the total number of lines of the help text.

## Active Help

If you enter an asterisk ("\*") in an input field of the main menu or of any other menu, the ASF program will display on the screen a list of the allowable input values for that field. If you then select an item in the list, ASF deselects the help display and enters the marked item automatically into the menu from which the help feature was activated. If, however, there is no active help defined for a particular input field, the passive text for the screen is displayed.

## Enhanced Profile Selection

If you mark a field in the profile selection list or in the active help list with a valid code of the calling mask, the corresponding function is performed. E.g. if you select the function "S" in the "Store profile administration", the "Select store profile from list" screen is displayed. If you mark a profile in this list with an "M", the corresponding profile is edited for modification.

## Active Help with Start Selection

For fields whose expected input is a Store Profile, Evaluation Profile or Store Type, you can precede the asterisk by one or more alphanumeric characters. In this case, the display of allowable values for the field starts at the value which matches the given characters. If no value matches the characters exactly, then the display will start at the next available value in alphabetical order.

When the asterisk is preceded by one or more characters in this way, the active help display is not restricted to just those values matching the given pattern. This feature merely specifies a starting point in the active help display. You can still use the scroll keys PF7 and PF8 to move to the start or the end of the entire list.

## Example

Assume that the cursor is on an input field where you are required to input the name of a Store Profile. If you want to use the active help facility to get a display of the available Store Profiles starting at the letter "K", then input "K\*" in the input field and press ENTER. If there are any Store Profiles whose names start with this letter, they will be displayed, otherwise the display will start with the next Store Profile name in alphabetical order.

### Note:

If you input characters after the asterisk, ASF ignores them.

## Function Key Settings

The following PF-keys are defined throughout:

PF-key	Function
PF1	Display passive help text.
PF3	Return to the calling screen (without saving data).
PF7	Scroll backwards by one screen.
PF8	Scroll forwards by one screen.
PF12	Return to main menu.

## Direct Command Line

The Direct Command Line, which appears at the bottom of every ASF menu, allows you to type commands which

- Modify your current working environment.
- Start certain ASF functions directly even if the associated menu is not currently selected.
- Select options from the Main Menu directly, regardless of which menu is currently displayed.

Such commands are called *Direct Commands*. The Main Menu options can be selected by typing the appropriate one-character code in the Direct Command Line. See the section Main Menu later in this section for a list of the one-character codes which can be used as Direct Commands.

In addition to the Main Menu options, the following Direct Commands are available:

Direct Command	Purpose
ASFLOGO	Display the ASF initial Logo screen.
ASFUEX	Display the ASF User Exit Maintenance Menu. The various options available for the ASFUEX direct command are described in the section User Functions.
ASFvrsnn	Start a program related to correction ASFvrsnn. Whether there is such a program and how to use it, is described in the information delivered with the corresponding correction.
DELETE HELP	Delete the old ASF help texts while performing an upgrade installation.
FETCH <i>progrname</i>	Call the external program <i>progrname</i> via FETCH. Same as “TRIG PROG <i>progrname</i> ”.
FETCH RETURN <i>progrname</i>	Call the external program <i>progrname</i> via FETCH RETURN. Same as “USE PROG <i>progrname</i> ”.
FIN	Exit from the NATURAL environment.
FSTORE <i>profilename</i> <i>storetype dbid</i>	Run the Store Program but store only database records; any file specified in the Store Profile is ignored. The Store Program is using the named Store Profile and Store Type. The third parameter ( <i>dbid</i> ) is optional. If it is specified, ASF data will be stored for this database only. The database must be one of the databases specified in the Store Profile.

Direct Command	Purpose
INFO	Display the ASF long error message corresponding to the most recently displayed ASF short error message.
INFO <i>nnn</i>	Display the long error message corresponding to the ASF error number <i>nnn</i> .
KEEP	Retain the current environment parameters for use when initializing the next ASF session.
LFILE	Maintain the ASF DATA and PROFILES file numbers. See the section ASF System File Maintenance for more details.
LINK FILE <i>filename</i>	Link the specified file number to all databases in the current (or last used) Evaluation Profile of type 5-10. This means that, for each database specified in the profile, any existing file numbers are deleted and an entry is made for the specified file number. Each time you use the LINK FILE command, the effect of the previous LINK FILE command is superseded.
LOGOFF	(same as FIN).
LOGON <i>xxxxx</i>	Log on to the NATURAL library <i>xxxxx</i> .
MENU	Select the ASF Main Menu.
MOD ON	Put ASF into Modify mode (for Predefined Evaluations). The last used Predefined Evaluation is activated.
MOD OFF	Return ASF to Capture mode.
PROFILE	Select the screen "Define User Profile", which is used to modify your working environment for the current session.
PROFILE <i>xxxxx</i>	Select the screen "Define User Profile", and display the profile for user <i>xxxxx</i> . If the profile for this user does not already exist, it will be created, and the values will be set to those for PROFILE STANDARD.
PROFILE STANDARD	Select the screen "Define User Profile" in a special mode which defines the initial working environment for new users.
RETURN	Exit from the NATURAL environment and pass a return code.
RETURN RESET	Reset the return code (no exit).
RETURN STATE	Write out the current return code (no exit).
RDC	Display the SYSRDC Main Menu.
SELECT	Select the Workplan (Screen "Predefined Evaluations and Reports", main menu option "P"). Note that you can also use the direct command "P" to select the Workplan.
SELECT <i>nn</i>	Select the predefined evaluation <i>nn</i> from the list of predefined evaluations in the Workplan.
STORE <i>profilename</i> <i>storetype dbid</i>	Run the Store Program, using the named Store Profile and Store Type. The third parameter ( <i>dbid</i> ) is optional. If it is specified, ASF data will be stored for this database only. The database must be one of the databases specified in the Store Profile.

Direct Command	Purpose
TRACE	Display the Trace Maintenance Menu. The various options available for the TRACE direct command are described in the section Tracing ASF.
TRIG PROG <i>programe</i>	Call the external program <i>programe</i> via FETCH.
USE PROG <i>programe</i>	Call the external program <i>programe</i> via FETCH RETURN.
VERSION	Display the ASF version and the number of the correction last applied.
* comment	Input is ignored by ASF. When a direct command starts with an '*' (asterisk), it is treated as comment. This is helpful when writing batch input streams. When the SYSRDC trace is active, the comment line is written to the trace.

**Note:**

Whenever a direct command is entered, ASF writes a user entry into the SYSRDC trace containing the direct command.

## Batch Operations

The Menu System can be activated in Batch Mode. This is especially important for running the Store Program at Nucleus startup and termination, before the nucleus statistical values are refreshed and also for storing data cyclically. Data which is input to the Menu System in batch mode has exactly the same order and format as the data which is input online. The method for running the Store Program in batch mode uses the Direct Command Line feature of ASF to execute a STORE command. The format of the STORE command as used in the Direct Command Line is shown below. The following sample shows an extract from a JCL job to run the Store Program in batch mode:

```
,STORE PROFILNAME STORETYP DBID
,FIN
```

Note that the STORE command is preceded by a comma (the standard delimiter is the comma, provided that the default settings "IM=D" and "ID=," in the Natural parameter module have not been modified). This is because the ASF Main Menu has two input fields, of which the Direct Command Line is the second. Therefore, when running ASF in batch mode, the (blank) data for the first input field is terminated by the comma, and the remainder of the line is input to the Direct Command line. To terminate ASF (and exit the Natural environment) in batch mode, the command FIN is included in the JCL job.

## Setting a Batch Return Code

The direct command RETURN terminates the ASF session (like "FIN" or "LOGOFF") and sets a return code. The return code is set to the following values:

Return Code	Reason
0	OK
2	A Critical Report has found critical values.
4	A STORE has stored some but not all DB's/files requested.
8	A STORE has stored no DB/file or the STORE failed with any ASF error (like "Profile not found").
12	A Natural error occurred.

The following sample shows an extract from a JCL job to run the Store Program in batch mode and to set a return code:

```
,STORE PROFILNAME STORETYP DBID
,RETURN
```

## Absolute and Relative Date Format

In the menus, you can specify dates in either absolute format or relative format.

In **absolute format**, you specify a date in the form YYYY-MM-DD or DD.MM.YYYY, depending on the current default format for absolute dates, as defined in the User Profile. For example, you would specify Nov 23, 2007 as one of the following

```
2007-11-23      (US format)
23.11.2007     (European format)
```

depending on the current default format for absolute dates. In general, ASF is generous when interpreting dates. If it finds a date which does not have the standard format, it translates it into the standard as soon as you press ENTER.

You can specify the year with two digits only. In this case, ASF assumes that the resulting year is in the range from (current year - 50) to (current year + 49). If, for example, the current year is 2007, the values from 00 to 56 are interpreted as 2000 to 2056 and the values from 57 to 99 are interpreted as 1957 to 1999.

```
07-11-23      (US format)
23.11.07     (European format)
```

The separators can be omitted if the year is specified with 4 or 2 digits and the day and month with 2 digits each:

```
20071123      (US format, 4-digit year)
231107       (European format, 2-digit year)
```

A date can always be specified as "DD.MM.YYYY" or as "YYYY-MM-DD" regardless of the current selected default date format if all digits are specified and the corresponding separator character is used. A 2-digit year is also possible. ASF translates the date into the current selected default date format. E.g. a predefined evaluation was saved with the date



23.11.93 (European format, 2 digit year)

If the current date format is YYYY-MM-DD (US), ASF translates the date as soon as you press ENTER into

1993-11-23 (standard US format, 4 digit year)

In **relative format**, you specify the date as a number of days, weeks or months relative to the current date. A relative count from first or last record is also possible. The valid formats are described in the following table:

Format	Decription
$\pm nnnD$	The day is $\pm nnn$ days relative to today. The valid range for $nnn$ is 0-999.  Example:  -1D means: Yesterday.
$\pm nnn$	The same as $\pm nnnD$ , but ASF sets the corresponding input time field in the menu automatically to the current time of day.  Example:  +1 means: Tomorrow, at the current time.
$\pm nnnWd$	The week is $\pm nnn$ weeks relative to the current week. The valid range for $nnn$ is 0-160. The day of the week is given by $d$ , whereby Monday=1, Tuesday=2, etc. If $d$ is not specified, the value 1 (the first day of the week, namely Monday) is assumed.  Example:  +0W2 means: Tuesday of the current week.
$\pm nnMdd$	The month is $\pm nn$ months relative to the current month. The valid range for $nn$ is 0-36. The day relative to the start of the month is given by $dd$ . If $dd$ is not specified, the value 1 (the first day of the month) is assumed.  Examples:  +1M15 means: the 15th day of next month.  -1M3 means: the 3rd day of the previous month.
$\pm nnnnR$	The date of the $nnnn$ -th record (time-stamps) counted from the first record for '+', or from the last record for '-'. ' $\pm 0$ ' is interpreted as ' $\pm 1$ ', i.e. first or last record, respectively. The valid range for $nnnn$ is 0-9999.  Example:  -1R means: last record.  +3R means: 3rd record.

**Note:**

*If you use the format  $\pm nnn$  as listed above, ASF sets the corresponding input time field automatically to the current time of day. If you use any of the other formats listed above, the corresponding input time field is not set automatically, so you must either enter the time explicitly or use the appropriate default value for the input time field.*

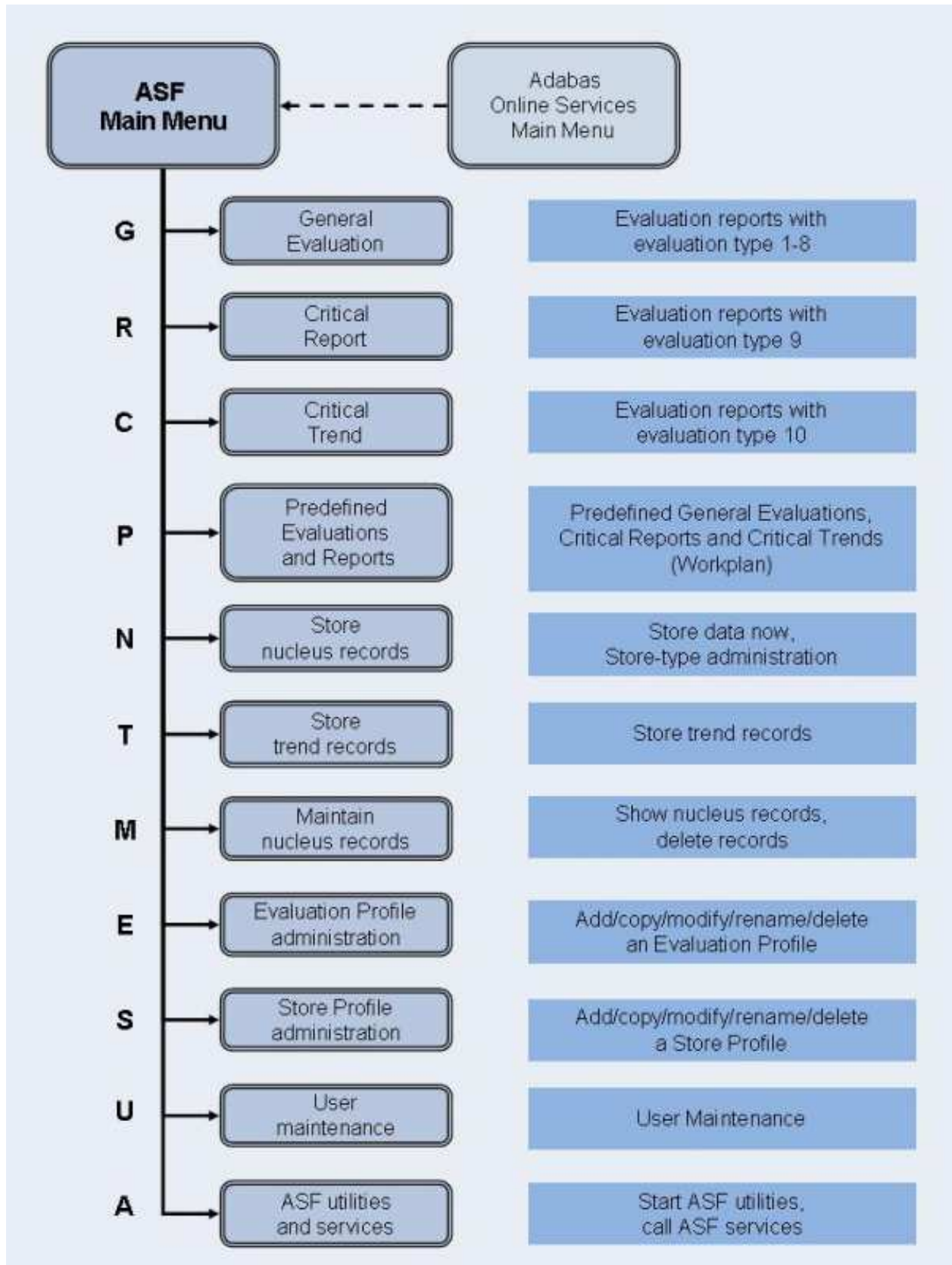


Figure 3-2: ASF Main Menu Functions

## Main Menu

```

10:42:29          *** A D A B A S Statistics Facility ***          2008-01-22
USERID              - Main Menu -                                MOS00001

          Code          Service
-----
          G  General evaluation
          R  Critical report
          C  Critical trend report
          P  Predefined evaluations and reports
          N  Store nucleus records
          T  Store trend records
          M  Maintain nucleus records
          E  Evaluation-profile administration
          S  Store-profile administration
          U  User maintenance
          A  ASF utilities and services
          ./? Terminate / Help
-----
Code:  _

Direct command ==> _____
Enter-PF1---PF2---PF3---PF4---PF5---PF6---PF7---PF8---PF9---PF10--PF11--PF12---
      Help More Term                                     Menu

```

Figure 3-3: Adabas Statistics Facility Main Menu

### Purpose

The menu lists the services which are available. You can select one of the listed services by typing the one-letter code for the service in the "Enter code" field. When you have entered the input data, press to activate the service which you selected.

### Service Codes

#### Code G: General evaluation (Evaluation types 1-8)

This option selects the screen for generating an Evaluation Report with an Evaluation Type of 1-8. These reports show the past and current status of databases and files, and do not include information concerning critical values.

#### Code R: Critical Report (Evaluation Type 9)

This selects the screen for running a Critical Report. A Critical Report lists the data fields which, according to the most recently stored data, have reached or exceeded their critical values.

#### Code C: Critical Trend Report (Evaluation type 10)

This selects the screen for running a Critical Trend Report. A Critical Trend Report lists the data fields which, based on their past and current values, will reach or exceed their critical values within a certain period of time, e.g. three months.

**Code P: Predefined evaluations and reports**

This selects the service for executing a predefined general evaluation, critical report or critical trend report. The list of predefined evaluations and reports is called the Workplan.

**Code N: Store nucleus records**

This selects the screen for either starting the Store Program, or for modifying the list of available Store Types.

**Code T: Store trend records**

This option selects the screen for storing a set of trend records. The stored trend records can then be evaluated by running the General Evaluation service (code G in the Main Menu).

**Code M: Maintain nucleus records**

This option selects the screen for displaying or deleting ASF records.

**Code E: Evaluation-profile administration**

This option selects the screen for the administration of Evaluation Profiles. You can define new profiles, and copy, modify, rename or delete existing profiles.

**Code S: Store-Profile Administration**

This option selects the screen for the administration of Store Profiles. You can define new profiles, and copy, modify, rename or delete existing profiles.

**Note:**

*Additional Store Types can be defined with the "Store nucleus records" service.*

**Code U: User maintenance**

This option selects the screen for User Administration. You can grant or deny permission to users to modify Store Profiles and Evaluation Profiles, to store data and run evaluations.

**Note:**

*This option is only available when Natural Security is being used. Furthermore, you must be registered in Natural Security as Administrator to select this option. See the section Step 5: Setting up User Security in the ASF Installation documentation for details.*

**Code A: ASF utilities and services**

This option selects the screen for the ASF Utilities and Services.

**Input field description**

**Enter code:**

Enter the code of the service you wish to activate.

**General Evaluation**

```

10:55:38          *** A D A B A S Statistics Facility ***          2008-01-22
USERID           - General evaluation -                          MSA00001

          Code          Service
-----
          S          Start general evaluation
          ?          Help
          .          Terminate
-----

Enter code : _

Eval. profile : _____
Evaluation type : ___
Time frame from : _____ , _____ to _____ , _____

Store profile : _____
Store type : ___
Origin : ___ Nucleus records
Screen : _ Printer : _ PC-File : _

Direct command ==> _____
Enter-PF1---PF2---PF3---PF4---PF5---PF6---PF7---PF8---PF9---PF10--PF11--PF12---
Help More Term          Capt          Menu>

```

**Figure 3-4: Menu for General Evaluation****Note:**

For Evaluation Types 2 and 6, the text "Time frame from" appears as shown here. For Evaluation Types 1,3,4,5,7 and 8, this text is replaced by the text "Points of time".

**Purpose**

This screen is used to start the Evaluation Reports with Evaluation Type 1-8. These reports show the past and current status of databases and files, generated future trend values and the results of statistical operations. They do not include information concerning critical values.

**Screen selection**

This menu is reached when you select the service code "G" in the main menu. In this case, the PF6 key is labeled "Capt".

The menu is also reached when you use the "modify" option in the list of predefined evaluations (main menu option "P"). In this case, the PF6 key is labeled "MODnn", where nn is the number of the predefined evaluation. See the section Workplan: Predefined Evaluations and Reports for more information.

## Service Codes

### Code S: Start evaluation

Select this service to start the evaluation. You supply information concerning the period of time which is to be analyzed, the name of the Store Profile which was used when storing the data, the Store Type, the Evaluation Profile to be used, and the output medium for the evaluation (screen, printer or PC). The output is formatted according to the Evaluation Type (1-8).

### Input field description

#### Enter code:

Enter "S" to start the evaluation.

#### Eval. profile:

The name of the Evaluation Profile which ASF will use when evaluating the stored data. Type "\*" to get an active help list of the Evaluation Profiles for the specified Evaluation Type.

#### Evaluation type:

The type (1-8) of report which ASF will generate.

#### Time frame from ... to: (Evaluation Types 2 and 6 only)

Enter here the starting date/time and the end date/time of the period to be evaluated. Defaults: the "to" date is today, the "to" time is 23:59.

You can specify the date in either absolute or relative format. For further details, refer to the section Absolute and Relative Date Format.

#### Note:

*Relative dates are especially useful when used in the Workplan or in a batch environment (see Option P in the Main Menu).*

#### Points in time from ... to: (Evaluation Types 1, 3, 4, 5, 7 and 8 only)

Type here the starting date/time and the end date/time of the period to be evaluated. Defaults: the "from" date is today, the "from" time is 00:00, the "to" date is today, the "to" time is 23:59.

You can specify the date in either absolute or relative format. For further details, refer to the section Absolute and Relative Date Format.

#### Store profile:

The name of the Store Profile which was used by the Store Program while the data was being collected. Type "\*" to get an active help list.

**Store type:**

The Store Type used by the Store Program while the data was being collected. (Note: to check which Store Type was used with which Store Profile, use the service "Maintain ASF records", which is available in the ASF main menu). Type "\*" to get an active help list.

**Origin:**

The Evaluation can be based on nucleus data stored by the Store Program or trend data created by running the service "Store Trend Records" (code T in the Main Menu). The choices are: ALL (both nucleus and trend data), NU (nucleus data only) and TR (trend data only). Type "\*" to get an active help list.

**Note:**

*When TR is selected, certain ASF fields may not be included in the report. This is because ASF considers certain data fields to be unimportant for trend records.*

**Screen / Printer / PC-File:**

The medium to which the output is sent. Mark one of the choices accordingly.

You can mark PC-File with an "X" for standard, "Y" for standard without header lines, "C" for CSV or "F" for a full download. See the section Download Format for more details.

## Critical Report

```

11:20:11          *** A D A B A S  Statistics Facility ***          2008-01-22
USERID           - Critical report -                               MCR00001

                Code                Service
                -----
                S   Start critical report
                ?   Help
                .   Terminate
                -----

Enter code : _

Eval. profile : _____

Store profile : _____
Store type : ___
Screen : _ Printer : _ PC-File : _

Direct command ==> _____
Enter-PF1---PF2---PF3---PF4---PF5---PF6---PF7---PF8---PF9---PF10--PF11--PF12---
Help More Term                               Capt                               Menu

```

**Figure 3-5: Menu for Critical Report**



## Purpose

This screen is used to start a Critical Report. A Critical Report lists the data fields which, according to the most recently stored data, have reached or exceeded their critical values.

## Screen selection

This screen is reached by selecting the service code "R" in the main menu. In this case, the PF6 key is labeled "Capt".

The menu is also reached when you use the "modify" option in the list of predefined evaluations (main menu option "P"). In this case, the PF6 key is labeled "MODnn" instead of "Capt", where nn is the number of the predefined evaluation. See the section Workplan: Predefined Evaluations and Reports for more information.

## Input field description

### Enter code:

Enter "S" to start the Critical Report.

### Eval. profile:

The name of the Evaluation Profile which ASF will use when evaluating the stored data. Type "\*" to get an active help list.

### Store profile:

The name of the Store Profile which was used by the Store Program while the data was being collected. Type "\*" to get an active help list.

### Store type:

The Store Type used by the Store Program while the data was being collected. Type "\*" to get an active help list.

### Screen / Printer / PC-File:

The medium to which the output is sent. Mark one of the choices accordingly.

If you mark Printer, and you have specified one or more Con-nect cabinets in your User Profile (refer to the screen "Define User Profile"), the output of the Critical Report will be sent as a memo to the named Con-nect cabinets as well as being sent to the default printer.

If you mark PC-File with an "X", the report is downloaded in standard format to the PC-File. If you mark PC-File with "C", the report is downloaded as comma-separated-values (CSV). If you mark PC-File with "E", the output is written in SMTP format to Workfile 1 which can be used for sending e-mails.

### Note:

*A Critical Report shows data which was recorded during the last run of the Store Program (using the given Store Profile and Store Type). This does not necessarily represent the current database status, if the data was stored some time ago (for example one or two days ago). If you take corrective action to the database according to the contents of a Critical Report, you must subsequently run the Store Program*

with the same Store Profile and Store Type, so that the changes will be reflected in a subsequent Critical Report.

## Description of Output

```

13:33:08          *** A D A B A S  STATISTICS FACILITY ***          2008-01-22
USERID           Critical report based on: 1992-04-13 23:12      MACR0001
  Evaluation profile: PROD-LIMIT-YELL Store profile: TEST-DB-ALL Type: WE
                                                    < ALL >
  DB !  File ! Field          !          Value !Unit!Parm!          Limit !Unit
  ---+-----+-----+-----+-----+-----+-----+-----+-----+
  16 !      ! DATA USED      !          92.8 ! PC ! GE !          85 ! PC
    !  122 ! NI EXTENTS      !           3 !   ! GE !           3 !
  17 !      ! DATA USED      !          99.7 ! PC ! GE !          85 ! PC
    !   39 ! DS EXTENTS      !           3 !   ! GE !           3 !
    !   71 ! DS EXTENTS      !           3 !   ! GE !           3 !
  26 !      ! DATA USED      !          97.3 ! PC ! GE !          85 ! PC
    !   44 ! AC EXTENTS      !           3 !   ! GE !           3 !
    !  185 ! NI EXTENTS      !           5 !   ! GE !           3 !
    !      ! DS EXTENTS      !           4 !   ! GE !           3 !
    !      ! AC EXTENTS      !           3 !   ! GE !           3 !
  37 !      ! DATA USED      !          86.4 ! PC ! GE !          85 ! PC
    !      !                  !           !   !   !           !
    !      !                  !           !   !   !           !
    !      !                  !           !   !   !           !
  Direct command ==> _____
Enter-PF1---PF2---PF3---PF4---PF5---PF6---PF7---PF8---PF9---PF10--PF11--PF12---
  Help      Term  Time          -      +          Menu

```

**Figure 3-6: Sample output for Critical Report**

Figure 3-6 shows an example of the information contained in a Critical Report. The output was generated by running Predefined Evaluation 2 - see the section on Predefined Evaluations for further details.

If you press PF4, an active help list is displayed of all of the stored data sets which were stored with the same Store Profile and Store Type. If you mark one of the data sets, then the Critical Report for that data set will be displayed. Alternatively, you can use the PF5 and PF6 keys to page backwards and forwards through the list of data sets stored with the current Store Profile and Store Type.

## Sending a Critical Report to Con-nect Cabinets

To send a Critical Report to Con-nect cabinets, perform the following steps:

- Verify that the Con-nect environment and the ASF interface to Con-nect are set up correctly. See the section Step 8: Setting up Con-nect in the *ASF Installation* documentation for details.
- Define a Con-nect profile (code "P" in the ASF Utilities and Services Menu). Specify at least one Cabinet as receiver. See the section Define User Profile for details.
- Define the Critical Report and write it to the screen as a test.
- Unselect the Output Medium "Screen" and select "Printer" instead but do not submit it.

- Capture the report as Predefined Report by pressing PF6. Specify the description of the new Predefined Report and save it. Remember the number of the Predefined Report.
- Set up a batch job calling the Predefined Report with the input statement

```
,SELECT nn
```

where *nn* is the number of the new Predefined Report. Take care that the job runs under the same user Id as the Con-nect profile.

- The report is send to the in-basket of the cabinets specified in the Con-nect profile. A copy is in the out-basket of the SYSASF cabinet and in the Natural print file of the job.

You can send a Critical report also online to Con-nect cabinets. In this case the copy is routed to the printer.

## Sending a Critical Report as e-Mail

To send a Critical Report as e-mail, perform the following steps:

- Define an e-Mail profile (code "P" in the ASF Utilities and Services Menu). Specify the domain name, the e-mail addresses of the receiver(s) and sender and a standard text. See the section User Profile Maintenance for details.
- Define a Critical Report and write it to the screen as a test.
- Unselect the Output Medium "Screen" and mark "PC-File" with an "E" instead but do not submit it.
- Capture the report as Predefined Report by pressing PF6. Specify the description of the new Predefined Report and save it. Remember the number of the Predefined Report.
- Set up a batch job calling the Predefined Report with the input statement

```
,SELECT nn
```

where *nn* is the number of the new Predefined Report. Take care that the job runs under the same user Id as the e-Mail profile.

- Define Workfile 1 (CMWKF01) in the job. ASF writes the report into this work file in SMTP format.
- Add an SMPT step to the job. Use as input the Workfile 1 defined in the ASF step. The SMPT JCL for z/OS looks like (similar for other operating systems):

```
//MESSAGE EXEC PGM=IEBGENER
//SYSIN DD DUMMY
//SYSPRINT DD SYSOUT=X
//SYSUT2 DD SYSOUT=(B,SMTP),DEST=(domain)
//SYSUT1 DD DSN=ASF.WORK1,DISP=SHR
```

- The SMTP server sends the Critical Report as e-mail to all receivers specified in the e-Mail profile. Errors found by SMTP are reported to the 'From'-address which is also used as sender address of the e-mail.

## Critical Trend Report

```

15:35:19          *** A D A B A S Statistics Facility ***          2008-01-22
USERID           - Critical trend report -                          MCT00001

          Code          Service
-----
          S          Start critical trend report
          ?          Help
          .          Terminate
-----

Enter code : _

Trend based on : _____ , _____ to _____ , _____
limited to : _____ , _____

Eval. profile : _____
Store profile : _____
Store type : _
Screen : _ Printer : _ PC-File : _

Direct command ==> _____
Enter-PF1---PF2---PF3---PF4---PF5---PF6---PF7---PF8---PF9---PF10--PF11--PF12---
      Help More Term                               Capt                               Menu

```

**Figure 3-7: Menu for Critical Trend Report**

### Purpose

This screen is used to start a Critical Trend Report. A Critical Trend Report lists ASF data fields which are either already critical, or which will reach their critical limit within a specified time.

### Screen selection

This screen is reached by selecting the service code "C" in the main menu. In this case, the PF6 key is labeled "Capt".

The menu is also reached when you use the "modify" option in the list of predefined evaluations (main menu option "P"). In this case, the PF6 key is labeled "MODnn", where nn is the number of the predefined evaluation. See the section Workplan: Predefined Evaluations and Reports for more information.

### Input field description

#### Enter code:

Enter "S" to start the Critical Trend Report.

#### Trend based on:

The start and end date and time of the period in which the original ASF Nucleus records were stored. The default time for the "from" field is 00:00. The default time for the "to" field is 23:59.

You can specify the date in either absolute or relative format. For further details, refer to the section Absolute and Relative Date Format.

**Note:**

*Relative dates are especially useful when used in the Workplan (see Option P in the Main Menu).*

**limited to:**

The end date and time to be considered for the critical trend. The default time is 23:59. The format of the date field is the same as for "Trend based on".

**Eval. profile:**

The name of the Evaluation Profile which contains the definitions of the databases, files and ASF data fields for which the Critical Trend Report is to be generated. Type "\*" to get an active help list.

**Store profile:**

The name of the Store Profile which was used by the Store Program to collect the original ASF Nucleus data. Type "\*" to get an active help list.

**Store type:**

The Store Type used by the Store Program while the data was being collected. Type "\*" to get an active help list.

**Screen / Printer / PC-File:**

The medium to which the output is sent. Mark one of the choices accordingly.

If you mark PC-File with an "X", the report is downloaded in standard format to the PC-File. If you mark PC-File with "C", the report is downloaded as comma-separated-values (CSV).

**Description of Output**

```

15:59:14          *** A D A B A S  STATISTICS FACILITY ***          2008-01-22
USERID   Crit-trend-base: 1992-03-01 - 1992-04-15 limit: 1992-09-30 MACT0001
  Evaluation profil: PROD-LIMIT-TREND Store profil: TEST-DB-ALL Type: WE wee
                                      < ALL >
  DB !  File ! Field                !          Limit !Unit!Parm! Date          ! Accur.
-----+-----+-----+-----+-----+-----+-----+-----+-----+-----+
  16 !   122 ! NI EXTENTS              !           5 !   ! GE ! 1992-04-14 ! n/a
      !     ! AC EXTENTS              !           5 !   ! GE ! 1992-04-15 ! n/a
  17 !     ! DATA USED                !          99 ! PC ! GE ! 1992-04-13 ! reache
  26 !     ! ASSO USED                !          99 ! PC ! GE ! 1992-04-29 ! 91
      !     ! DATA USED                !          99 ! PC ! GE ! 1992-04-12 ! 87
  27 !     ! DATA USED                !          99 ! PC ! GE ! 1992-09-16 ! 43
      !     !                          !          !   !   !           !
      !     !                          !          !   !   !           !
      !     !                          !          !   !   !           !
      !     !                          !          !   !   !           !
      !     !                          !          !   !   !           !
      !     !                          !          !   !   !           !
      !     !                          !          !   !   !           !
      !     !                          !          !   !   !           !
      !     !                          !          !   !   !           !
      !     !                          !          !   !   !           !
      !     !                          !          !   !   !           !
      !     !                          !          !   !   !           !
      !     !                          !          !   !   !           !

  Direct command ==> _____
Enter-PF1---PF2---PF3---PF4---PF5---PF6---PF7---PF8---PF9---PF10---PF11--PF12---
  Help             Term              -       +                       Graph Menu

```

**Figure 3-8: Sample output for Critical Trend Report.**

Figure 3-8 shows an example of the type of information shown in a Critical Trend Report (the output was generated by running Predefined Evaluation 5 - see the section on Predefined Evaluations for further details). The example shows that the report was run on January 22nd, is based on data stored between March 1st and April 15th, and that the trend was extrapolated to September 30th (the original delivered sample data is from 1992). ASF calculated that the fields shown would reach their critical limits within this time, on the dates shown in the "Date" column. The value in the column "Accuracy" for each critical field is the coefficient of determination (expressed as a percentage), which is a standard statistical quantity for measuring the linearity of a data sample. Used in the context of the Critical Trend Report, it gives a measure of confidence in the prediction. Values above 90% indicate a very reliable prediction.

For the file-extent related fields, the critical date is calculated in a special procedure using the Adabas formula for calculating the standard size of further extents. For these fields the accuracy cannot be calculated and is listed as "n/a".

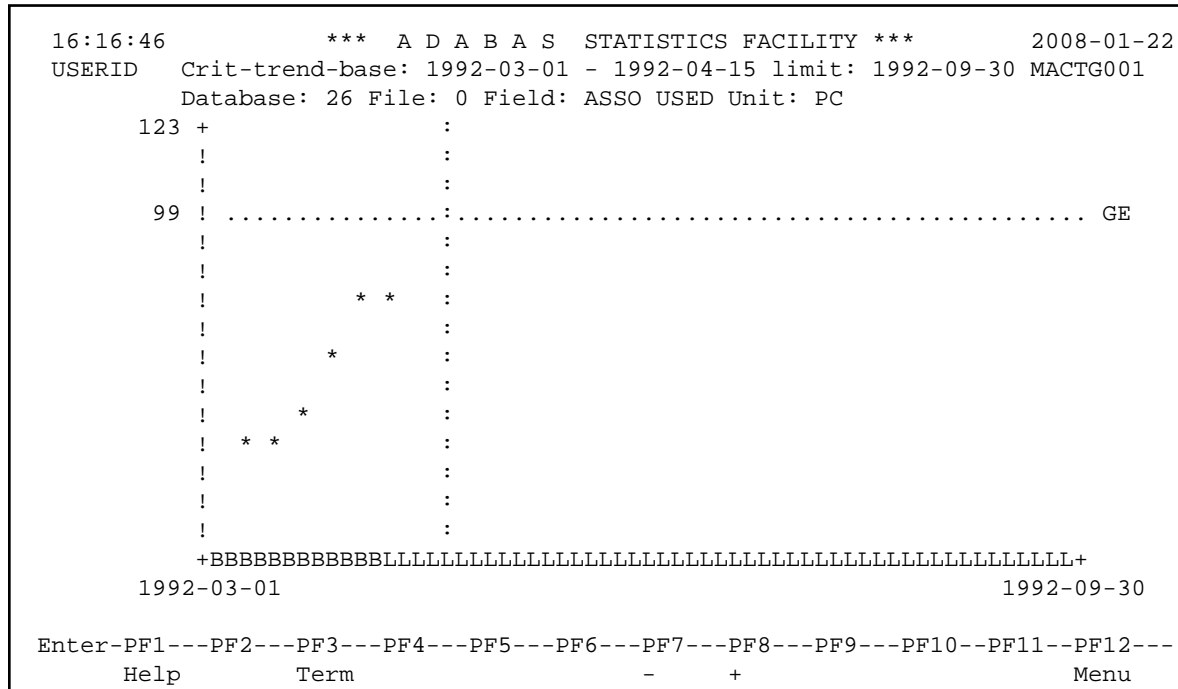
Fields which have already reached the critical value with the last record of the base period are indicated in the "Accuracy" column as "reached".

When you download the report to the PC, an additional column "Last Base" lists the value of the last record of the base period.

You can select the Graph feature of the Critical Trend Report by pressing the PF11 key, as indicated in Figure 3-8. When you do this, a graph is displayed on the screen, indicating the development of the first of the ASF data fields during the period in question. The graph also indicates the date at which the ASF data field will reach or exceed the critical limit. The keys PF7 and PF8 can be used in this graph mode to scroll backwards and forwards respectively within the list of ASF data fields.

The graph for a particular ASF data field can be selected directly from the Critical Trend Report output screen by moving the cursor to the name of the field and pressing PF11.

Figure 3-9 shows the graph for the ASF data field "ASSO USED", which is the 4th ASF data field listed in Figure 3-8.



**Figure 3-9: Sample graphical output for Critical Trend Report**

The graph shows values for the field ASSO USED for database 26. The critical limit of 99% for this field is shown as a horizontal line of dots. The horizontal axis is the time axis. It is labeled "B" for the period of time for which stored ASF data exists, and "L" for the period of time for which a prediction is being made. The asterisks show the ASF data which is stored for the field ASSO USED. One asterisk on the graph might represent several stored data values which cannot be displayed separately due to the limited resolution of the graph. The vertical line of dots which meets the horizontal axis shows the predicted date when the value of ASSO USED will reach the critical limit.

If you want to generate a similar graph on the PC, perform the following steps:

- Store trend records. Use the same times as in the critical trend reports as base period. The generate time should include the critical time reported by the Critical Trend.
- Run a General Evaluation. Use the same fields as in the Critical Trend. The time should include the base period as well as the generated future times. Origin must be set to "ALL".
- Download the General Evaluation to the PC and process the data with a spreadsheet tool like Excel.



**Figure 3-9a: Sample graphical output for Trend Data**

In this graph the original nucleus values are indicated as blue points, the calculated trend values are red points. The critical 99 % will be reached in the last week of the diagram. A percentage above 100 indicates that more space for the Associator (used) will be required than currently available (Associator defined).

## Workplan: Predefined Evaluations and Reports



```

ASF330 'S'tart for evaluation or 'I'nfo,'M'odify,'D'elete,'*','. '
16:25:54          *** A D A B A S  Statistics Facility ***          2008-01-22
USERID          - Evaluation selection -          MEVSE001

01 __ Limit-report 'RED'      : Used storage >= 95 %, extents >= 4
02 __ Limit-report 'YELLOW'  : Used storage >= 85 %, extents >= 3
03 __ Limit-report 'YELLOW'  : HWM's,S2,format overwr.,throwbacks,restarts...
04 __ Limit-report 'BLUE'    : Waste of resources disk/main storage, pools...

05 __ Limit-report TREND     : Development of ASSO/DATA storage, 5th. extents
06 __ Disk-storage         : Historical development of a database (time frame)
07 __ Disk-storage         : Multiple databases at one glance (point in time)
08 __ File-overview        : Historical development of a file (time frame)

09 __ File-overview        : Multiple files at one glance (point in time)
10 __ IO-behaviour         : Historical development of a database (time frame)
11 __ IO-behaviour         : Multiple databases at one glance (point in time)
12 __ Resources            : Historical development of a database (time frame)

Direct command ==> _____
Enter-PF1---PF2---PF3---PF4---PF5---PF6---PF7---PF8---PF9---PF10--PF11--PF12---
Help More Term          -      +          Menu

```

**Figure 3-10: Screen for Predefined Evaluations and Reports**

## Purpose

This screen displays the Workplan, which is a list of predefined evaluations and reports. Associated with each item in the Workplan is a set of parameters which can be used to start a General Evaluation, Critical Report or Critical Trend Report. Using this feature, the input data required to run frequently used evaluations can be defined once in the Workplan, then activated as often as required.

## Description

Using the Workplan, it is possible to store the parameters which are required for running a General Evaluation, Critical Report or Critical Trend Report. When you press PF6 ("Capture") in any of the screens General Evaluation, Critical Report or Critical Trend Report, the values currently displayed in the input fields of the screen are added as a new item to the Workplan. The evaluations can be started directly from the Workplan by entering "S" in the input field beside the appropriate item or with the direct command

```
SELECT nn
```

where *nn* is the number of the predefined evaluation. The numbers of the predefined evaluations are listed in the first column of the Workplan.

After you install ASF for the first time, 30 of the first 35 slots in the Workplan are preset to run examples of predefined evaluations supplied by Software AG. These examples access test ASF data records, so you can activate any of them immediately after installing ASF in order to view some sample ASF reports. Corresponding to each of these examples is an Evaluation Profile, also supplied by Software AG, which ASF requires to run the example. The sample Predefined Evaluations are listed in the section Supplied Predefined Evaluations in the *ASF Examples* documentation, the corresponding Evaluation Profiles are in the section Supplied Evaluation Profiles in the same documentation.

You can add your own predefined evaluations to this list (up to 96 predefined evaluations are allowed). You can also modify or delete one or more of the examples supplied by Software AG and use the vacant slots for your own predefined evaluations. See the Workplan Functions below for details.

A predefined evaluation can only be modified or deleted if the user is authorized to modify evaluation profiles.

## Screen selection

This screen is reached by selecting the service code "P" in the main menu.

## Workplan Functions

The Workplan functions are activated by typing the appropriate letter in the input field corresponding to the item, then pressing ENTER. These functions are:

### Function S: Start a predefined evaluation or report

The function "S" causes the evaluation or report to run.

### Function I: Display information

Associated with each item in the Workplan are several lines of descriptive text. The first line of each Workplan item is shown in the Workplan screen. The function "I" causes the additional lines of text to be displayed.

### Function M: Modify a predefined evaluation or report

If you wish to change any of the data values of a predefined evaluation or report, select the function "M" (Modify). This causes the corresponding screen for General Evaluation, Critical Report or Critical Trend Report to be displayed, with all of the input fields filled with the data which was stored in the Workplan.

Note that when you select General Evaluation, Critical Report or Critical Trend Report from the Workplan, the PF6 key is labeled "MOD $nn$ ", where  $nn$  is the number of the Workplan item.

You can now make your modifications. When you have completed the modifications, press PF6. The descriptive text for this Workplan item is displayed on the screen, and you can modify it if you wish. To exit from the text window, press ENTER. If you have changed the text, you will be asked to confirm the change by pressing ENTER again.

Subsequently, the Workplan is redisplayed.

### Function D: Delete

The function "D" deletes an item from the Workplan. You must confirm the deletion in a pop-up window.

## Active Help

Type "\*" to get an active help list of the Workplan functions.

## Editor Functions for the Workplan

ASF provides editor functions for the administration of the Workplan. Using these functions, items in the list can be copied, moved to another position or deleted.

The following editor functions can be applied to an item in the list by inserting the two character code in the item's input field:

Function	Description
.X	Mark an item with "X"
.Y	Mark an item with "Y"
.C	Make a copy of the current item and insert it directly after the current item. All of the following items are moved down one position.
.D	Delete the item. All of the following items are moved up one position.
.A	Activate an item. This defines a "destination" position for the Copy and Move functions listed below. The activated item is highlighted on the screen.

The following editor functions must be entered on the Direct Command Line:

Function	Description
CX-Y	All of the items between the items marked "X" (function ".X") and "Y" (function ".Y") are copied and inserted directly after the activated item (function ".A"). The following items are moved down the appropriate number of positions.
MX-Y	All of the items between the items marked "X" (function ".X") and "Y" (function ".Y") are moved from their current position to directly after the activated item (function ".A").
DX-Y	All of the items between the items marked "X" (function ".X") and "Y" (function ".Y") are deleted. The following items are moved up the appropriate number of positions.

To move a single item from one position in the list to another, it must be marked firstly with ".X", then with ".Y", and then moved with "MX-Y".

## Store Nucleus Records

```

14:03:40          *** A D A B A S Statistics Facility ***          2008-01-23
USERID          - Store nucleus data environment -          MSN00001

          Code          Service
-----
          S          Store data now
          F          Store data without file information
          A          Store type administration
          ?          Help
          .          Terminate
-----

Enter code : _

Store profile : _____
Store type : __

Reduced on DB-ID : _____

Direct command ==> _____
Enter-PF1---PF2---PF3---PF4---PF5---PF6---PF7---PF8---PF9---PF10--PF11--PF12---
          Help  More  Term                               Msg                               Menu

```

**Figure 3-11: Menu for Store Nucleus Records**

## Purpose

This screen is used to run the Store Program once for a particular Store Profile and Store Type, or to modify the list of user-defined Store Types.

## Screen selection

This menu is reached by selecting the service code "N" in the main menu.

## Service Codes

### Code S: Store Data Now

Select this option to run the Store Program on an ad-hoc basis. The program runs once, collecting current data for the databases and files defined in the Store Profile, and then it terminates.

### Code F: Store data without file information

This option is similar to Store Data Now, but stores only database records; any files specified in the Store Profile are ignored. As a result, this option executes faster than Store Data Now, so it is useful in cases where speed is required, for example when storing End Nucleus (Store Type=EN) records.

### Code A: Store Type administration

Select this option to obtain the menu for the administration of the user-defined Store Types. With this service you can define new Store Types, or modify or delete existing user-defined Store Types. It is, however, not possible to modify or delete the predefined Store Types.

The screen for "Store type administration" shows a list of the currently defined Store Types. You define a new user-defined Store Type by appending it to the end of the list. You delete an existing user-defined Store Type by overwriting the name of the Store Type with blanks then pressing the ENTER key.

## **Input field description**

### **Enter code:**

The code of the service you wish to activate.

### **Store profile:**

The name of the Store Profile which is to be used by the Store Program to collect the data.

### **Store type:**

The Store Type to be used by the Store Program to collect the data. Type "\*" to get an active help list.

A summary of the Store Types follows the description of the input fields.

### **Reduced on DB-ID:**

If you enter a database ID in this optional input field, then data will be stored only for the database specified. The database ID must be one of those defined in the Store Profile.

## **Summary of the Store Types**

The following Store Types are predefined for use with Store Nucleus Records. An overview of all predefined Store Types is provided in the section Supplied Store Types.

### **Start Nucleus (SN)**

This Store Type is used when the Store Program is run directly after the Nucleus startup.

### **End Nucleus (EN)**

This Store Type is used when the Store Program is run immediately before ending the nucleus session.

### **Refresh Nucleus (RN)**

This Store Type can be used when the Store Program is run immediately before the nucleus statistical values are refreshed by the ADADBS 'REFRESHSTATS' function. You can use this Store Type in a 24-hour environment (Adabas nucleus runs continuously). If, however, the nucleus is shut down from time to time, you should use the "EN" (end nucleus) Store Type before you refresh the nucleus statistical values.

### **Cyclic (CY)**

This Store Type is used when the Store Program is run on a cyclic basis, for example once every 24 hours. If you use the Job Scheduler to run the Store Program cyclically, you must develop a JCL procedure which runs in Batch Natural and executes ASF direct commands.

**Daily Storage (DA)**

This Store Type is used when the Store Program is run on a daily basis.

**Weekly Storage (WE)**

This Store Type is used when the Store Program is run on a weekly basis.

**Ad hoc (AH)**

This Store Type is used when the Store Program is run on a one-off basis, in either online or batch mode.

**Start TP monitor (ST)**

This Store Type is used when the Store Program runs immediately after the TP monitor is started.

**End TP monitor (ET)**

This Store Type is used when the Store Program is run immediately before the TP monitor is terminated.

**Test Storage (TE)**

This Store Type is used when the Store Program is run for test purpose.

**Store Types for Utilities**

Several Store type are predefine for the ASF Condense Nucleus Records utility. These Store types start with "+", "&" or "#". They are described in detail in the sections Condense Records to Average Records and Condense Records to Delta Records.

**Additional Store Types**

In addition to the built-in Store Types, you can define new Store Types. The names can consist of any two characters, provided that none of the existing Store Type names is used. Also, care should be taken not to use any characters which have a special significance for the TP monitor being used (for example, the "suspend" character should be avoided).

You could, for example, use a new Store Type when monitoring the effect of an ADARUN parameter change over a period of several hours, making one run of the Store Program every 30 minutes. After the resulting ASF records have been analyzed in an Evaluation Report, the records can be deleted. Records stored by the Store Program with one of the standard Store Types are not affected by this procedure.

Another example of the use of additional Store Types is to store records at monthly intervals. A suitable name for such a Store Type would be "MO". Evaluation Reports could then be generated, based only on the data stored in these records. .

**Display Messages of the Store**

While the Store Program runs, an informational message for each database and file processed is listed on the screen indicating whether the store was successful or not. After the run you can press PF9 ("Msg") to list the error messages in more details. In batch, the error messages are listed always by default. The error message list looks like:

DB	File	AOS-Pgm	Response
177	4	AB8FCB	Rsp 017 - File not found
50151	61	AB8FCB	Rsp 017 - File not found
50151	62	AB8FCB	Rsp 017 - File not found
111		ABSOPN2	Rsp 148 - DB not active

## Store Trend Records

```

14:38:16          **** A D A B A S Statistics Facility ****          2008-01-23
USERID          - Store trend data -          MGTS0001

          Code          Service
-----
          S          Store trend data now
          ?          Help
          .          Terminate
-----

Enter Code: _

Trends based on : from: _____ , 00:00   to: _____ , 23:59
Generate trend : from: _____ , 00:00   to: _____ , 23:59
Steps of days : 7__
DBs and FIs from : _____

Store profile : _____
Store type : __

Direct Command ==> _____
Enter-PF1---PF2---PF3---PF4---PF5---PF6---PF7---PF8---PF9---PF10--PF11--PF12---
Help More Term          Menu

```

**Figure 3-12: Menu for Store Trend Records**

### Purpose

This screen is used to generate a set of trend records. Trend records contain predictions of future database behavior based on trends indicated in existing ASF Nucleus records. Records generated in this way can be evaluated using the General Evaluation service (code G in the Main Menu).

### Note:

*Each trend record contains data which is predicted for a particular date and time. No two trend records in a set contain data predicted for the same day. Before new trend records are generated, all previously stored trend records with the same store profile and store type are deleted automatically. For a specific store profile and store type you will therefore find only the trend records generated last.*

### Screen selection

This menu is reached by selecting the service code "T" in the main menu.

## Service Codes

### Code S: Store Trend Data Now

The code of the service you wish to activate.

#### Trends based on:

The start and end date and time of the period in which the original ASF Nucleus records were stored. The default time for the "from" field is 00:00. The default time for the "to" field is 23:59.

You can specify the date in either absolute or relative format. For further details, refer to the section Absolute and Relative Date Format.

#### Generate Trend:

The start and end date and time of the period for which the trend records are to be generated. The default time for the "from" field is 00:00. The default time for the "to" field is 23:59. The format for the date field is the same as for "Trends based on".

#### Steps of days:

The required interval, in days, between adjacent trend records in the set. The default value is 7.

#### DBs and FIs from:

Enter the name of a Store Profile or an Evaluation Profile which specifies the databases and files for which you wish to generate trend records. This will typically be the Evaluation Profile which will be used to output a report based on the generated trend records. If the Evaluation Profile does not contain databases, the corresponding Store Profile should be used.

#### Note:

*Trend records are based on data which was stored using a particular Store Profile with a particular Store Type. The set of databases and files specified in that Store Profile might be considerably larger than the set of databases and files for which trend records are required.*

#### Store profile:

The name of the Store Profile which the Store Program used when creating the original ASF Nucleus data. Type "\*" to get an active help list.

#### Store type:

The Store Type which the Store Program used when creating the original ASF Nucleus data. Type "\*" to get an active help list.

A summary of the Store Types follows the description of the input fields in the section Store Nucleus Records.



## Maintain Nucleus Records

```

15:15:44          *** A D A B A S Statistics Facility ***          2008-01-23
USERID           - Maintain nucleus records -                      MDR00001

          Code          Service
          -----
          S      Show nucleus records
          D      Delete nucleus records
          E      Export nucleus records to workfile
          I      Import nucleus records from workfile
          ?      Help
          .      Terminate
          -----

Enter code : _

Records from : _____ , 00:00 to _____ , 23:59
Store profile : _____
Store type : _____
Origin : _____
Database ID : _____

Direct command ==> _____
Enter-PF1---PF2---PF3---PF4---PF5---PF6---PF7---PF8---PF9---PF10--PF11--PF12---
      HELP          Term                                     Menu

```

**Figure 3-13: Menu for Maintain Nucleus Records**

### Purpose

This screen is used to display a summary of records which have been stored by the Store Program, or to delete records stored by the Store Program.

### Screen selection

This menu is reached by selecting the service code "M" in the main menu.

### Service Codes

#### Code S: Show Nucleus Records

This lists records which have been stored by the Store Program, according to the selection criteria which you enter in the input data fields of the menu. If you enter data for more than one input data field, then records will be listed only if they meet all of the selection criteria. The listed records are sorted according to Store Profile and Store Type, and show: database and file names, date, time and number of records.

#### Code D: Delete Nucleus Records

Selecting this option causes records which were stored by the Store Program to be deleted. You specify the records to be deleted by entering data in one or more of the input data fields. If you enter data for more than one input data field, then records will be selected for deletion only if they meet all of the selection criteria.

Before the records are deleted, a warning is displayed on the screen, stating how many records would be deleted. You can confirm the delete operation by typing the word "delete", then pressing ENTER. You will then be prompted to press ENTER again to confirm the deletion. You can cancel the delete operation by pressing PF3.

### Code E: Export Nucleus Records

The Export option copies nucleus records to the external work file 1, as specified in the JCL for the job, according to the selection criteria which you enter in the input data fields of the menu. The original nucleus records are not deleted. If you enter data for more than one input data field, then records will be copied only if they meet all of the selection criteria.

This function runs only in batch mode with most TP monitors, since output data is written to a work file.

Records which have been exported can be subsequently imported (copied back into the set of ASF nucleus records) using the IMPORT option in the same menu.



#### **Warning:**

**If a Store Profile is used to create ASF nucleus or trend records, and these records are subsequently exported, the Store Profile must not be deleted, otherwise you cannot reload the records with the Import option. The reason is that the ASF records contain the ID (in numerical form) of the Store Profile which created them, so the Store Profile must still exist when records are imported, otherwise an invalid reference occurs. You can, however, use the Transfer option in the ASF Utilities Menu to reload the records.**

### Code I: Import Nucleus Records

The Import option copies nucleus records from the external work file 1 into the set of ASF nucleus records, according to the selection criteria which you enter in the input data fields of the menu. If you enter data for more than one input data field, then records will be copied only if they meet all of the selection criteria.

If an imported record already exists as a nucleus record, an error message is generated and the imported record is rejected. After this the import continues.

The external work file must be in the format which is created by the EXPORT option in the same menu. The external work file is specified in the JCL in the same way as for the EXPORT option (see above).

This function runs only in batch mode with most TP monitors, since input data is read from a work file.

## Input field description

### Enter code:

The code of the service you wish to activate.

**Records from ... to:**

The starting date/time and the end date/time of the time frame to be used for the selected service.

You can specify the date in either absolute or relative format. For further details, refer to the section Absolute and Relative Date Format.

**Store profile:**

The name of the Store Profile which was used by the Store Program while the data was being collected. Type "\*" to get an active help list.

**Store type:**

The Store Type used by the Store Program while the data was being collected. Type "\*" to get an active help list.

**Origin:**

The Evaluation can be based on nucleus data stored by the Store Program or trend data created by running the service "Store Trend Records" (code T in the Main Menu). The choices are: ALL (both nucleus and trend data), NU (nucleus data only) and TR (trend data only). Normally, NU should be used. Type "\*" to get an active help list.

**Database ID:**

The ID of the database for which the selected service applies.

## Evaluation Profile Administration

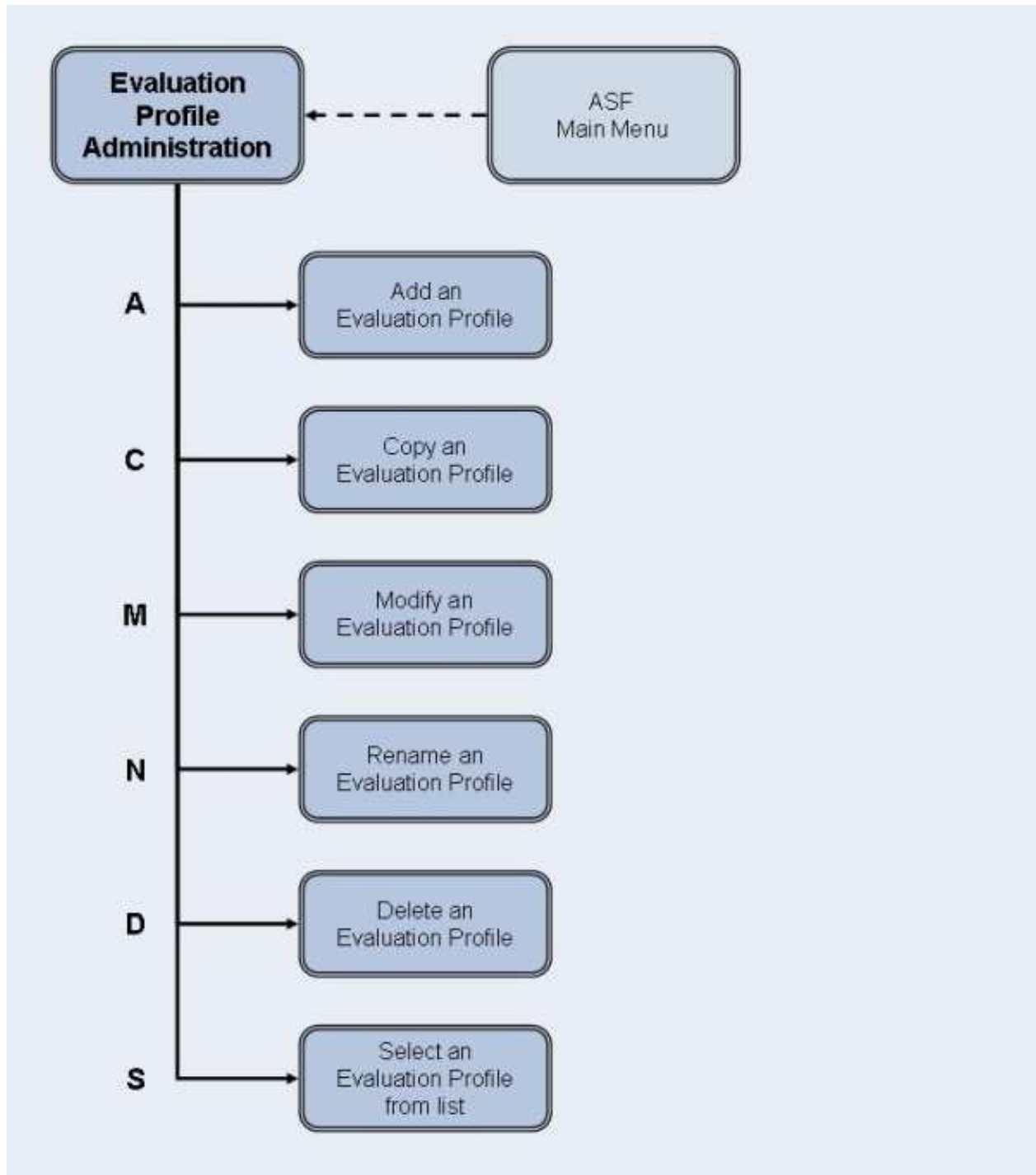


Figure 3-14: Evaluation Profile Administration Menu

### Screen Layout for Evaluation Profile Administration

```

15:43:45          *** A D A B A S  Statistics Facility ***          2008-01-23
USERID           - Evaluation profile administration -             MPE00001

                Code          Service
                -----
                A      Add an evaluation profile
                C      Copy an evaluation profile
                M      Modify an evaluation profile
                N      Rename an evaluation profile
                D      Delete an evaluation profile
                S      Select evaluation profile from list
                ?      Help
                .      Terminate
                -----

Enter code : _
Profile : _____
Evaluation type : ___

Direct command ==> _____
Enter-PF1---PF2---PF3---PF4---PF5---PF6---PF7---PF8---PF9---PF10--PF11--PF12---
Help More Term                                     Menu

```

**Figure 3-15: Menu for Evaluation-Profile Administration**

## Purpose

This screen is used for the administration of Evaluation Profiles. By selecting the appropriate code, services to add new profiles, or to modify, rename, copy or delete existing profiles can be selected.

## Screen selection

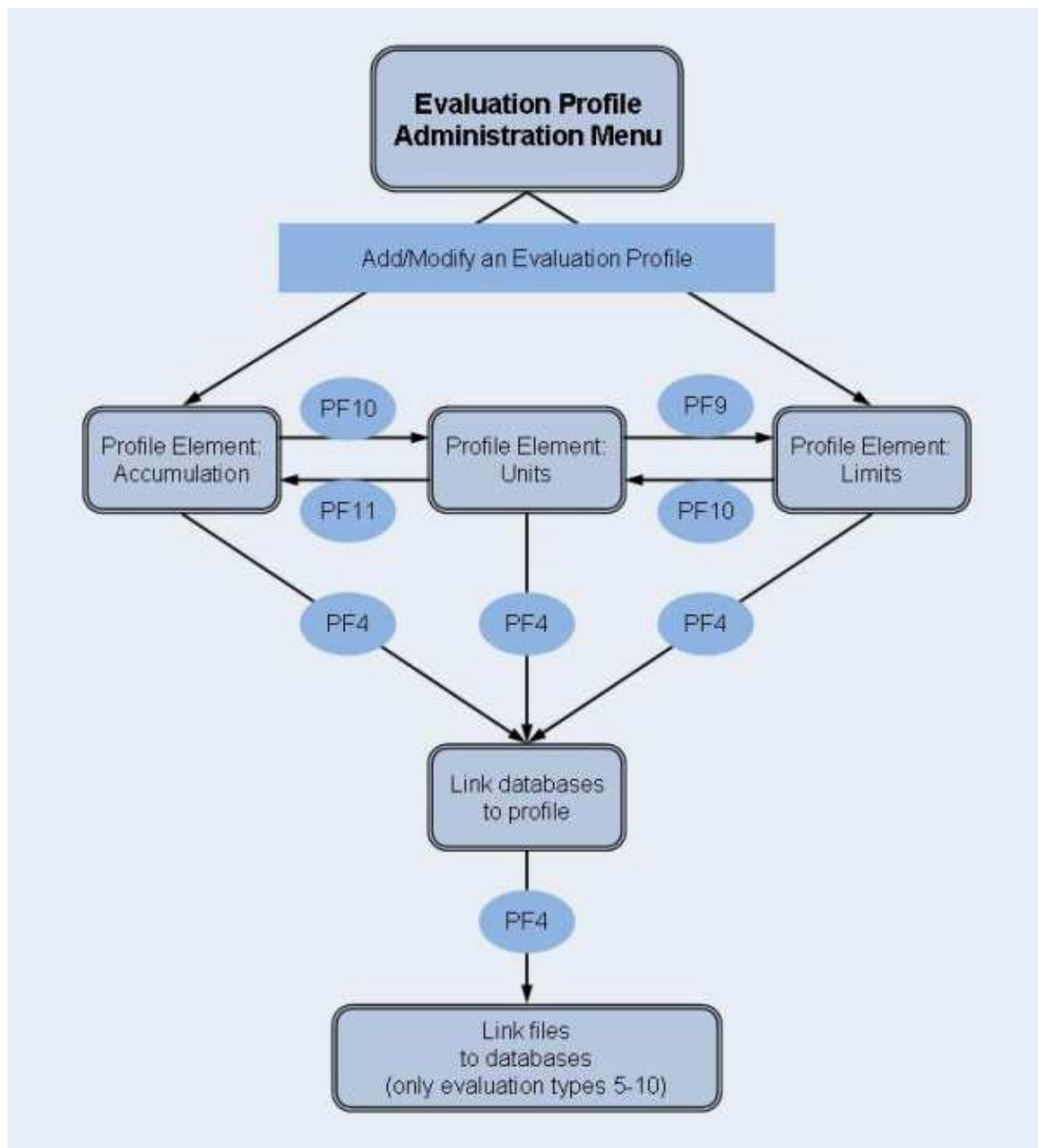
This menu is reached by selecting the service code "E" in the main menu.

## Screens used when defining an Evaluation Profile

You use several screens when adding or modifying an Evaluation Profile, depending on the Evaluation Type. The screens are:

- Evaluation Profile administration
- Profile Element: Accumulation (types 1-8)
- Profile Element: Limits (types 9-10)
- Profile Element: Units
- Link databases to profile
- Link files to database (types 5-10)

The screens are accessed as shown in the following diagram.



**Figure 3-16: Adding/Modifying an Evaluation Profile**

## Service Codes

### Code A: Add an evaluation profile

Select this service to add a new Evaluation Profile to the list of evaluation profiles. When you type the name of the new profile at the "Profile:" prompt and press ENTER, a screen appears in which you can optionally supply an alias name for the new profile.

An alias name can be up to 3 characters long. If you type an alias name, it can be used subsequently instead of the profile name in any input field which requires a profile name. If you do not wish to provide an alias name for the profile, simply press ENTER.

If you specify an Evaluation Type 1-8, the service "Profile Element: Accumulation" will be started. If you specify an Evaluation Type 9 or 10, the service "Profile Element: Limits" will be started.

### **Code C: Copy an evaluation profile**

Select this service to copy an existing Evaluation Profile to a new Evaluation Profile. Type the name of the existing profile in the "Profile" input field. When you press ENTER, a screen appears in which you specify the name and alias of the new profile, and also the Evaluation Type of the new profile.

### **Code M: Modify an evaluation profile**

Select this service to modify an existing Evaluation Profile. If you specify an Evaluation Type 1-8, the service "Profile Element: Accumulation" will be started. If you specify an Evaluation Type 9 or 10, the service "Profile Element: Limits" will be started.

### **Code N: Rename an evaluation profile**

Select this service to change the name of an Evaluation Profile or the alias or both. A screen appears in which you can overwrite the existing names with new names.

### **Code D: Delete an evaluation profile**

Select this service to delete an existing Evaluation Profile. Type the name of the profile to be deleted in the "Profile" input field. A screen appears in which you must type the name (again!) and alias of the profile. After you press ENTER, you will be prompted to press ENTER again to confirm the deletion.

### **Code S: Select evaluation profile from list**

Select this service to start the active help function for the "Profile" input field.

## **Input field description**

### **Enter code:**

Enter the code of the service you wish to activate.

### **Profile:**

The name of the Evaluation Profile (or the alias name, if it exists) which ASF will use for the selected service. Type "\*" to get an active help list.

### **Evaluation type:**

The type (1-10) of report which ASF will generate. Type "\*" to get an active help list.

## Profile Element: Accumulation

```

16:28:04          **** A D A B A S Statistics Facility ****          2008-01-23
USERID           - Profile element : Accumulation -                 MPXK0001

Prof.: EVAL-01          1 One DB in point in time (DB) V:Fields H:Times

Field Name          ! Seq ! Min ! Max ! Sum ! Avr ! Val ! Disp ! Det
-----+-----+-----+-----+-----+-----+-----+-----+-----< ALL >
_____ ! ____ ! ___ ! ___ ! ___ ! ___ ! ___ ! ___ ! ___ ! ___
_____ ! ____ ! ___ ! ___ ! ___ ! ___ ! ___ ! ___ ! ___ ! ___
_____ ! ____ ! ___ ! ___ ! ___ ! ___ ! ___ ! ___ ! ___ ! ___
_____ ! ____ ! ___ ! ___ ! ___ ! ___ ! ___ ! ___ ! ___ ! ___
_____ ! ____ ! ___ ! ___ ! ___ ! ___ ! ___ ! ___ ! ___ ! ___
_____ ! ____ ! ___ ! ___ ! ___ ! ___ ! ___ ! ___ ! ___ ! ___
_____ ! ____ ! ___ ! ___ ! ___ ! ___ ! ___ ! ___ ! ___ ! ___
_____ ! ____ ! ___ ! ___ ! ___ ! ___ ! ___ ! ___ ! ___ ! ___
_____ ! ____ ! ___ ! ___ ! ___ ! ___ ! ___ ! ___ ! ___ ! ___
_____ ! ____ ! ___ ! ___ ! ___ ! ___ ! ___ ! ___ ! ___ ! ___

Direct command ==> _____
Enter-PF1---PF2---PF3---PF4---PF5---PF6---PF7---PF8---PF9---PF10--PF11--PF12---
      Help More Term DBs Add Save - + Units Menu

```

**Figure 3-17: Menu for Profile Element: Accumulation.**

### Purpose

This screen is used to define the types of accumulation to be displayed when the Evaluation Profile is used in an Evaluation Report.

### Screen selection

This screen can be selected in several ways:

- By choosing option "A" (add an evaluation-profile) or "M" (modify an evaluation-profile) in the "Evaluation-profile administration" screen, if the Evaluation Type is 1-8.
- By pressing PF11 in the "Profile Element: Units" screen.

### Adding data fields

At most 10 ASF data field names can be displayed on one screen. If you have defined an Evaluation Profile which specifies more than 10 fields, then pressing the PF8 key will scroll forwards through the list. Similarly, pressing the PF7 key will scroll backwards through the list.

To add a new field to the list, you can do any one of the following:

- If there is an unused position in the "Field Name" column, you can type the name of the data field directly at that position. If the current screen is full, you can scroll forward page by page to the end of the list by typing the PF8 key repeatedly, until an unused position is displayed.



- You can type the two characters ". I" over the first two characters of an existing field name. This causes a new empty line to be inserted between two existing lines. You can then use the new empty line for typing in the name of a new data field.
- Instead of the field name, you can also type the internal field number as short cut for the field. The internal field numbers are listed in the "Nr." column in the Select Fields screen. Note that internal field numbers can change with new ASF releases.
- You can select the active help by typing an asterisk ("\*") in any field in the "Field Name" column, even if the field is not blank, or by pressing the PF5 key ("Add"). The active help is described below in more detail. The fields which you select in the active help will be inserted after the line with the "\*" or, if you have pressed the PF5 key, at the end of the list.

## Reordering data fields

If you wish to change the order of field names in the "Field Name" column, the simplest method is to overwrite the sequence number in the "Seq" column. If, for example, you originally defined a particular data field at the position with sequence number 4, and you want to move it to position number 1, then overwrite the "4" in the "Seq" column with "1", then press ENTER. The list of data fields will be reordered so that the data field which was previously at position 4 is now at position 1.

## Active help at field selection

You can select the active help at the field selection by typing an asterisk ("\*") in the first position of any field in the "Field Name" column or by pressing the PF5 key ("Add"). The screen "Active help: Select groups" is displayed.

```

16:44:59          **** A D A B A S Statistics Facility ****          2008-01-23
                   - Profile element : Accumulation -                MPXK0001

+-----< Select groups      page 1 >-----< ALL >-----+
!
!  Mk Nr.  Group Name                Sel Max !  Mk Nr.  Group name                Sel Max !
!  -----+-----+-----+-----+-----+-----+-----+
!  ___  1  ADARUN-Parameter            0  25 !  ___  11  High water marks            0  8  ! >
!  ___  2  Session Informatio          0  16 !  ___  13  Tech. ASF fields              0  17 !
!  ___  3  Physical DB-Layout           0  9  !  ___  14  User defined field          0  20 !
!  ___  4  IO-Data                      0  9  !
!  ___  5  Cmd distr. source             0  4  !
!  ___  6  Cmd distr. thread             0 251 !
!  ___  7  Cmd distr. type               0 22 !
!  ___  8  User calls                    0  6 !
!  ___  9  Run time info                 0  7 !
!  ___ 10  Call duration (mil)           0 21 !
!
!                                     Total .....          415 !
+-----+-----+-----+-----+-----+-----+-----+-----+

Direct command ==> _____
Enter-PF1---PF2---PF3---PF4---PF5---PF6---PF7---PF8---PF9---PF10--PF11--PF12---
      Help More Term          All  Selct                               Menu

```

Figure 3-18: Active help: Select groups.

This screen shows how many data fields for each group are available for the given Evaluation Type (column "Max") and how many of them are currently selected (column "Sel"). The total number of the selected and available fields is also displayed.

You can mark a group with the following line commands:

A	Select all fields of the group.
D	Delete all selections of the group.
X	Display the data fields of the group for further selection.

Pressing the PF5 key ("All") is like marking all groups with "X". If you have marked any group with "X" or you have pressed the PF5 key, the "Active help: Select fields" screen is displayed.

```

16:44:59          **** A D A B A S Statistics Facility ****          2008-01-23
                   - Profile element : Accumulation -                MPXK0001

+---< Select fields of group 2: 'Session Information' page 1 >---< ALL >---+
!
!  Mk Nr. Field name                State  !  Mk Nr. Field name                State  !
!  -----+-----+-----+-----+-----+-----+-----+-----+-----+
!  ___ 29 DBID                       !  ___ 39 DURATION                   ! >
!  ___ 30 DB-NAME                     !  ___ 40 WAIT-TIME                  !
!  ___ 31 SVC                         !  ___ 41 CPU-TIME                   !
!  ___ 32 NUCID                       !  ___ 42 DATE NUC-START             !
!  ___ 33 VERSION                     !  ___ 43 TIME NUC-START             !
!  ___ 34 DATE LOADED                 !  ___ 44 NUC-RUN-TIME              !
!  ___ 35 TIME LOADED                 !                                     !
!  ___ 36 MAXNR OF FILES               !                                     !
!  ___ 37 NR FILES LOADED              !                                     !
!  ___ 38 CURR. LOG TAPE               !                                     !
!                                     !                                     !
!                                     !                                     !
+-----+-----+-----+-----+-----+-----+-----+-----+

Direct command ==> _____
Enter-PF1---PF2---PF3---PF4---PF5---PF6---PF7---PF8---PF9---PF10--PF11--PF12---
      Help  More  Term                Selct  -    +                Prev  Next  Menu

```

**Figure 3-19: Active help: Select fields.**

In this screen, the relevant data fields for the given Evaluation Type of the selected group are displayed. The "State" column indicates whether the field is already selected. You can select the fields by marking them with "X" or reverse the selection with "D". You can scroll through the list by using the PF7 and PF8 keys as usual. With the PF10 and PF11 keys you can go to the previous or next group when you have marked more than one group in the group menu.

When you have finished marking your selections, you must press PF6 to store them. Then the next selected group is displayed. After the last group, the group selection screen is displayed again. If you press here PF6 again, the active help screen is deselected. If you press PF3 while the active help screen is displayed, then the active help screen is deselected and all of the marked data fields are ignored.

The number "Nr." indicates the internal field number which can be used as abbreviation when selecting fields in the "Profile element : Accumulation" screen.

## Selecting statistical functions

You can enter an "x" in one or more of the columns Min, Max, Sum, Avr, Val, Disp and Det for each of the specified field names. Each such mark means that the appropriate statistical function will be activated for that field when the Evaluation Profile is used to create an Evaluation Report. The statistical functions are:

Statistical Function	Meaning
Min	The minimum value recorded for the field in question is required.
Max	The maximum value recorded for the field in question is required.
Sum	The total of all recorded data for the field is required.
Avr	The average of the recorded data for the field is required.
Val	The most recent value recorded of the field. For evaluations of type 2 or 6 an additional line lists this value. For the other evaluation types, the recorded data is listed anyway. Therefore no additional column is displayed.
Disp	This is the coefficient of dispersion, also known as the coefficient of variation. It is calculated by dividing the standard deviation by the mean, and normally results in a value between 0 and 100. The coefficient of dispersion is a measure of the deviation of the set of data from the average value. A value close to 0 indicates that the data points lie near to the average value.
Det	This is the coefficient of determination, which is the square of the coefficient of correlation. The coefficient of determination is a measure of the linearity of the data sample. This value is expressed as a percentage, whereby a value close to 100 indicates a very linear relation, and a value less than 50 indicates a non-linear relation. (This value is indicated by the term "Accuracy" in the output of a Critical Trend Report).

### PF keys:

The usual meanings apply for the PF-keys PF1 (help), PF3 (terminate screen, return to calling screen), PF12 (exit to main menu).

PF-key	Screen selected
PF4	Link Databases to profile.
PF5	Active help: Select groups/fields.
PF10	Profile element: Units.

## Profile Element: Limits

```

17:14:49          **** A D A B A S Statistics Facility ****          2008-01-23
USERID           - Profile element : Limits -                          MPXL0001

Prof.: EVAL-09          9 Critical report : List of fields, databases and f

Field Name          ! Seq ! Rel.! Limit      Unit! Join! Rel.! Limit
-----+-----+-----+-----+-----+-----+-----+-----< ALL >
_____! ____! ____! _____! ____!   ! ____! _____
_____! ____! ____! _____! ____!   ! ____! _____
_____! ____! ____! _____! ____!   ! ____! _____
_____! ____! ____! _____! ____!   ! ____! _____
_____! ____! ____! _____! ____!   ! ____! _____
_____! ____! ____! _____! ____!   ! ____! _____
_____! ____! ____! _____! ____!   ! ____! _____
_____! ____! ____! _____! ____!   ! ____! _____
_____! ____! ____! _____! ____!   ! ____! _____
_____! ____! ____! _____! ____!   ! ____! _____

Direct command ==> _____
Enter-PF1---PF2---PF3---PF4---PF5---PF6---PF7---PF8---PF9---PF10--PF11--PF12---
      Help  More  Term  DBs   Add   Save  -    +           Units      Menu

```

**Figure 3-20: Menu for Profile Element: Limits.**

## Purpose

In this screen, the user specifies "critical" limits for the ASF fields. These critical limits are the basis of the evaluations for Critical Reports and Critical Trend Reports.

## Screen selection

This screen can be selected in several ways:

- By choosing option "A" (Add an evaluation-profile) or "M" (Modify an evaluation-profile) in the "Evaluation-profile administration" menu if the Evaluation Type is 9 or 10.
- By pressing PF9 in the "Profile Element: Units" screen if the Evaluation Type is 9 or 10.

## Summary of usage

For each data field, you can define either one or two critical values. The data you specify for the critical values determines the conditions under which the data field will be included in a Critical Report or Critical Trend Report. Each critical value is defined by:

- A numerical value, which you type in the "Limits" column.
- A unit of measurement, which you type in the "Unit" column.
- A mathematical relation, which you type in the column "Rel", which ASF uses when comparing the data field's current value to the limit value.

See the following sections Units of measurement and Mathematical relations for further details.

If you define two critical limits for a given data field, the limit values are joined with an "OR". See the following section Combining critical values for details.

## Limit values

For each data field, you can define either one or two critical values. The Limit field is numeric.

## Units of measurement

The allowable units of measurement are:

Symbol	Meaning
BL	Blocks
CY	Cylinders
MB	Megabytes
BY	Bytes
SE	Seconds
PM	per minute
PC	percent

### Note:

*For dimensionless data fields such as READ ASSO, the unit field is left blank. In general, you can only specify a unit which results in a numeric value, e.g. you can not use the units "hours" or "days".*

## Mathematical relations

The allowable relations are shown in the following table. Relations are expressed by two-letter abbreviations as shown in the following table. The usual mathematical relational operators can be used as well.

Abbreviation		Meaning
EQ	=	equals
NE	≠	is not equal to
GE	≥	is greater than or equal to
LE	≤	is less than or equal to
GT	>	is greater than
LT	<	is less than

## Combining critical values

You can define two critical limits for a data field. If you define two critical limits, the data field is critical if at least one of the conditions is true.

### Example:

The following example shows critical values defined for the data field "ASSO USED" in the Evaluation Profile "TEST-EVAL". The data shown here means: the value of the data field will be critical when it is greater than or equal to 90 %, or when it is less than or equal to 5 %. The word "OR" is displayed automatically in the Join column when you define the second critical value for a data field.

```

14:23:59          **** A D A B A S Statistics Facility ****          23.11.2007
USERID           - Profile element : Limits -                          MPXL0001

Prof.: TEST-EVAL          9 Critical report : List of fields, databases and f

Field Name      ! Seq ! Rel.! Limit      Unit! Join! Rel.! Limit
-----+-----+-----+-----+-----+-----+-----+-----< ALL >
ASSO USED       !  1 ! GE !          90 ! PC ! OR ! LE !    5
  
```

Figure 3-21: Specifying critical values

## Reordering the data fields

The "Seq" column can be used to change the order of the fields listed. See the description of the screen "Profile Element: Accumulation" for details.

## Profile Elements: Units

```

17:50:57          **** A D A B A S Statistics Facility ****          2008-01-23
USERID           - Profile element : Units -                          MPXU0001

Prof.: EVAL-09          9 Critical report : List of fields, databases and f

Field Name      !      !      !      ! Da ! Hr ! Se !      !      ! 1/call
                ! Seq ! Default ! Bl ! Cy ! MB ! BY ! % ! Nom ! 1/min
-----+-----+-----+-----+-----+-----+-----+-----+-----< ALL >
_____ ! ____ !      ! ____ ! ____ ! ____ ! ____ ! ____ ! ____ ! ____
_____ ! ____ !      ! ____ ! ____ ! ____ ! ____ ! ____ ! ____ ! ____
_____ ! ____ !      ! ____ ! ____ ! ____ ! ____ ! ____ ! ____ ! ____
_____ ! ____ !      ! ____ ! ____ ! ____ ! ____ ! ____ ! ____ ! ____
_____ ! ____ !      ! ____ ! ____ ! ____ ! ____ ! ____ ! ____ ! ____
_____ ! ____ !      ! ____ ! ____ ! ____ ! ____ ! ____ ! ____ ! ____
_____ ! ____ !      ! ____ ! ____ ! ____ ! ____ ! ____ ! ____ ! ____
_____ ! ____ !      ! ____ ! ____ ! ____ ! ____ ! ____ ! ____ ! ____
_____ ! ____ !      ! ____ ! ____ ! ____ ! ____ ! ____ ! ____ ! ____
_____ ! ____ !      ! ____ ! ____ ! ____ ! ____ ! ____ ! ____ ! ____

Direct command ==> _____
Enter-PF1---PF2---PF3---PF4---PF5---PF6---PF7---PF8---PF9---PF10--PF11--PF12---
      Help More Term DBs Add Save - + Limit Menu
  
```

**Figure 3-22: Menu for Profile Element: Units.****Purpose**

In this screen, the units of the data fields to be used in the output report are specified.

**Screen selection**

This screen can be selected in several ways:

- by pressing PF10 in the "Profile Element: Accumulation" screen
- by pressing PF10 in the "Profile Element Limits" screen

**Available units**

The selectable units are listed in the following table. Some columns are used for two different units. It depends on the field specified which of them is used.

Unit	Meaning	Description
Bl	Blocks	The size value is displayed in units of blocks.
Cy	Cylinders	The size value is displayed in units of cylinders.
MB	Megabytes	The size value is displayed in units of megabytes (millions of bytes).
BY	Bytes	The size value is displayed in units of bytes.
Se	Seconds	Some data fields represent a time as for example the field "CPU-TIME". These fields have in the "Default" column the entry "SE" (seconds). If the column "Se" (seconds) or no column is marked for such a field, the output report will show the total number of seconds.
Hr	Hours	The time value is displayed as "hours:minutes:seconds".
Da	Days	The time value is displayed as "days:hours:minutes".
%	Percent	The value is displayed as percentage. The basic value used for the percentage calculation can be found in the section ASF Fields in the <i>ASF Examples</i> documentation.
Nom	Actual Value	The actual value of the field. This is also the default if no column is selected.
1/min	Per Minute	Some data fields represent the number of times a particular event occurred since the Adabas nucleus was started. An example is the data field "READ ASSO", whose value is incremented by 1 every time a READ operation occurs on ASSO. If the column "1/min" is marked, the output report will express this value as an average number of occurrences per minute.
1/call	Per Call	Call duration fields (e.g. DUR-L9) represent the time in milliseconds the nucleus spent to perform a specific type of call (e.g. all L9 calls) since nucleus start. If the column "1/call" is marked, the output report will express this value as an average time spent per call.

## Selecting units

For each data field, you can choose one or more units of measurement to be output in any Evaluation Report which uses this Evaluation Profile. ASF indicates the default unit of measurement for each field in the column "Default".

If any of the unit columns is marked with an "x", then the corresponding ASF field will appear in the output report in the appropriate format.

If you press ENTER before selecting at least one unit of measurement for a given field, then ASF automatically places a mark in the column representing the default unit of measurement for that field.

Not all units are applicable for all fields. If you select a unit which is not allowed for the given field, ASF displays an error message. The units available for each field are listed in the section ASF Fields in the *ASF Examples* documentation.



For evaluations of type 9 or 10, only one unit can be selected per field.

When you press PF6, all of the marked data is saved in the Evaluation Profile. Furthermore, if you have specified "N" in the "Stay after SAVE" field in the User Profile (see the section User Profile Maintenance), the screen will be automatically deselected.

### Reordering the data fields

The "Seq" column can be used to change the order of the fields listed. See the description of the screen "Profile Element: Accumulation" for details.

## Link Databases to Profile

```

18:51:14          **** A D A B A S Statistics Facility ****          2008-01-23
USERID           - Profile administration -                          MPXXD001

+-----< link databases to profile >-----< ALL >--+
!                                     Profile :  EVAL-05                                     !
!                                                                                             !
! DB-ID   DB-Name           dyn   DB-ID   DB-Name           dyn   !
! -----  -----          ---   -----  -----          ---   !
! _____  _____          ___   _____  _____          ___   !
! _____  _____          ___   _____  _____          ___   !
! _____  _____          ___   _____  _____          ___   !
! _____  _____          ___   _____  _____          ___   !
! _____  _____          ___   _____  _____          ___   !
! _____  _____          ___   _____  _____          ___   !
! _____  _____          ___   _____  _____          ___   !
! _____  _____          ___   _____  _____          ___   !
! _____  _____          ___   _____  _____          ___   !
! _____  _____          ___   _____  _____          ___   !
! _____  _____          ___   _____  _____          ___   !
! _____  _____          ___   _____  _____          ___   !
! _____  _____          ___   _____  _____          ___   !
+-----+

Direct command ==> _____
Enter-PF1---PF2---PF3---PF4---PF5---PF6---PF7---PF8---PF9---PF10--PF11--PF12---
      Help  More  Term  Files           Save  -      +                               Menu

```

Figure 3-23: Menu for Link Databases to Profile.

**Note:**

The columns marked "dyn" appear when defining a Store Profile, or when defining an Evaluation Profile with an Evaluation Type of 5-10.

### Purpose

This screen is used to define databases in Evaluation Profiles and Store Profiles.

For Evaluation Profiles, the definition of databases is optional. Specifying databases restricts the evaluation to the given values. If you do not specify any database, the databases and files are linked dynamically to the profile when the evaluation is performed. In this case, all databases and files found in the data are used.

For Store Profiles, the definition of databases is mandatory.

## Screen selection

This screen can be selected as follows:

- When the "Add a store profile" or "Modify a store profile" services in the "Store-profile administration" screen are selected.
- By pressing the PF4 key in any of the screens "Profile Element: Accumulation", "Profile Element: Limits" or "Profile Element: Units".

## Input Field description

The screen contains 20 input fields (two columns of 10 input fields each) which you can use for typing in database IDs. The database IDs must be numeric. When a new profile is being defined, these fields are originally empty. When you modify an existing profile, the values which you previously entered for these fields are redisplayed. New database IDs can be typed in any blank input field. If there is no blank input field available, you can press PF8 to scroll forward to the next 20 input fields. You can also type the two characters ". I" in any input field, even if that field is not blank, then press ENTER. This causes a blank input field to be created, which you can then use to type in the new database ID. You can remove a database ID from the list by overwriting it with blanks and then pressing ENTER.

You can specify at most 256 different database IDs in one profile. Each database ID must be in the range from 1 to 65535.

For a Store Profile or an Evaluation Profile of type 5-10, you can select files by positioning the cursor to the corresponding database entry and pressing PF4. You can also type ".F" in the DB-ID field or "F" in the "dyn" field. The "Link Files to Database" screen is displayed.

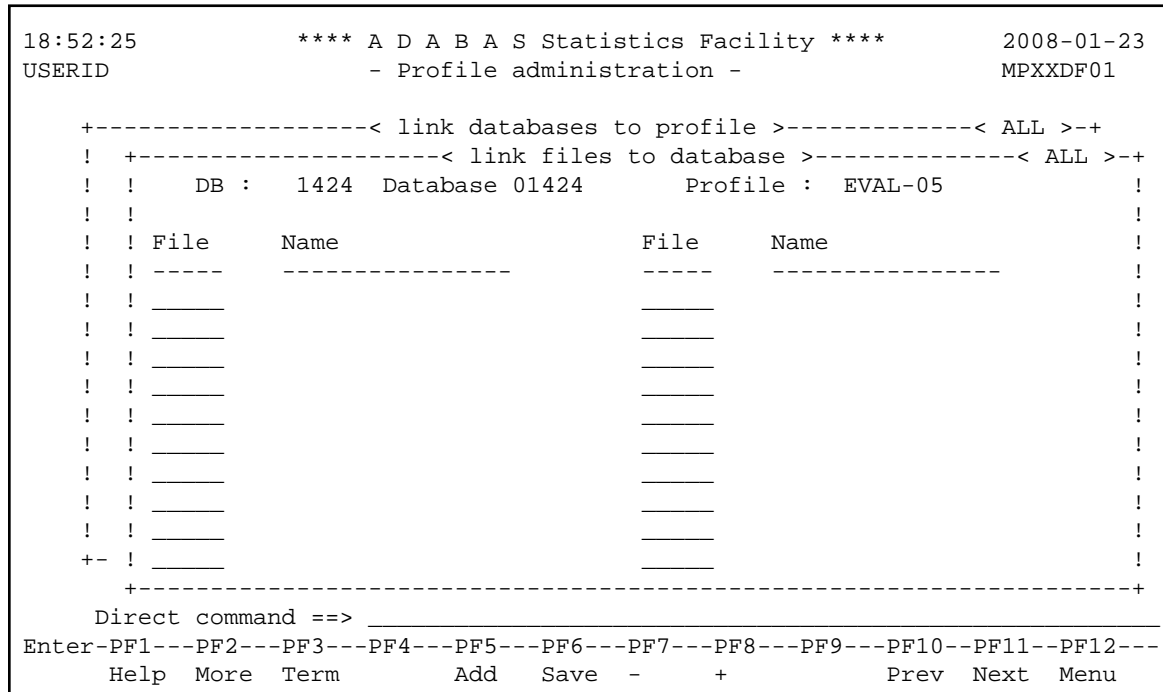
When defining a Store Profile, or when defining an Evaluation Profile with an Evaluation Type of 5-10, the extra columns marked "dyn" are displayed. If you mark the dyn-field corresponding to a DBID, then the list of files corresponding to the database (accessed by pressing PF4) will not be evaluated when the Store Program or an Evaluation is running. Instead, ASF will dynamically include all currently active files for the database in its processing, if the profile is a Store Profile, or, in the case of an Evaluation Profile, all possible files for the database. In this case, the number of files is not restricted to 256, as it is when you specify the file IDs explicitly. If you later remove the "dyn"-mark from the DBID, the Store Program and the Evaluations revert to using the explicit list of files which you have specified for the database.

The "dyn" column is not displayed for Evaluation Profiles with an Evaluation type of 1-4 since these profiles contain no file-related ASF data fields.

When you have finished typing the database IDs, you must press PF6 before pressing PF3, otherwise ASF ignores your changes and returns to the calling screen.

When you press PF6, all of the marked data is saved in the Evaluation or Store Profile. Furthermore, if you have specified "N" in the "Stay after SAVE" field in the User Profile (see the section "User Profile Maintenance"), the screen will be automatically deselected.

# Link Files to Profile



**Figure 3-24: Menu for Link Files to Profile**

### Purpose

This screen is used to specify which files in a particular database should be included in Store Profile or an Evaluation Profile.

**Note:**

For Evaluation Profiles, this screen can only be selected if the Evaluation Type is 5-10.

### Screen selection

This screen is selected by positioning the cursor on a database entry in the screen "Link databases to profile" and pressing PF4 or by typing ".F" in the DB-ID field or "F" in the "dyn" field.

### Input Field description

The screen contains 20 input fields (two columns of 10 input fields each) which you can use for typing in file IDs. The input fields are directly under the heading "File". The file IDs must be numeric. When a new profile is being defined, these fields are originally empty. When you modify an existing profile, the values which you previously entered for these fields are redisplayed. New file IDs can be typed in any blank input field. If there is no blank input field available, you can press PF8 to scroll forward to the next 20 input fields. You can also type the two characters ". I" in any input field, even if that field is not blank, then press ENTER. This causes a blank input field to be created, which you can then use to type in the new file ID. You can remove a file ID from the list by overtyping it with blanks and then pressing ENTER. You can specify at most 256 different file IDs for each database ID. Each file ID must be in the range from 1 to 5000.

When you have finished typing the file IDs, you must press PF6 before pressing PF3, otherwise ASF ignores your changes and returns to the calling screen.

When you press PF6, all of the marked data is saved in the Evaluation Profile. Furthermore, if you have specified "N" in the "Stay after SAVE" field in the User Profile (see the screen "Define User Profile"), then the screen will be automatically deselected.

When you press PF10 or PF11, the files of the previous or next DBID listed in the "Link Databases to Profile" function are displayed. Before the next/previous database is displayed, ASF saves the changes of the current database automatically.

## Active help at file selection

You can select the active help at the file selection by pressing the PF5 key or typing "\*" in the first position of any file ID. The file IDs that you select in the active help will be inserted after the line with the "\*" or, if you have pressed the PF5 key, at the end of the list.

```

18:52:25          **** A D A B A S Statistics Facility ****          2008-01-23
USERID           - Profile administration -                          MPXXDF01

+-----< link databases to profile >-----< ALL >--+
! +--< Select Files of DB 1424 ==> Row      1 of      10 >-< ALL >--+ LL >--+
! !
! ! Mk  File  Name                Mk  File  Name                !      !
! ! -----                        -----                        !      !
! !   ___      1 Checkpoint-file          !      !
! !   ___      5 NAT-FNAT                  !      !
! !   X_      6 NAT-USER                   !      !
! !   ___      7 NDV-SYSF                  !      !
! !   ___      8 NAT-SECU                  !      !
! !   ___     14 ASF-DATA                  !      !
! !   ___     15 ASF-PROFILE                !      !
! !   X_     101 Employees                  !      !
! !   X_     102 Miscellaneous              !      !
! !   X_     103 Vehicles                  !      !
+- ! Start file:      1                    !      !
+-----+-----+-----+-----+-----+-----+-----+-----+
Direct command ==> _____
Enter-PF1---PF2---PF3---PF4---PF5---PF6---PF7---PF8---PF9---PF10--PF11--PF12---
Help  More  Term                Selct  -      +                          Menu

```

**Figure 3-25: Active help: Select files**

This screen shows you the list of currently active files of the selected database. Files already selected are marked with "X". You can select new file IDs by marking them with "X". You can deselect a file ID by overtyping the "X" with blanks.

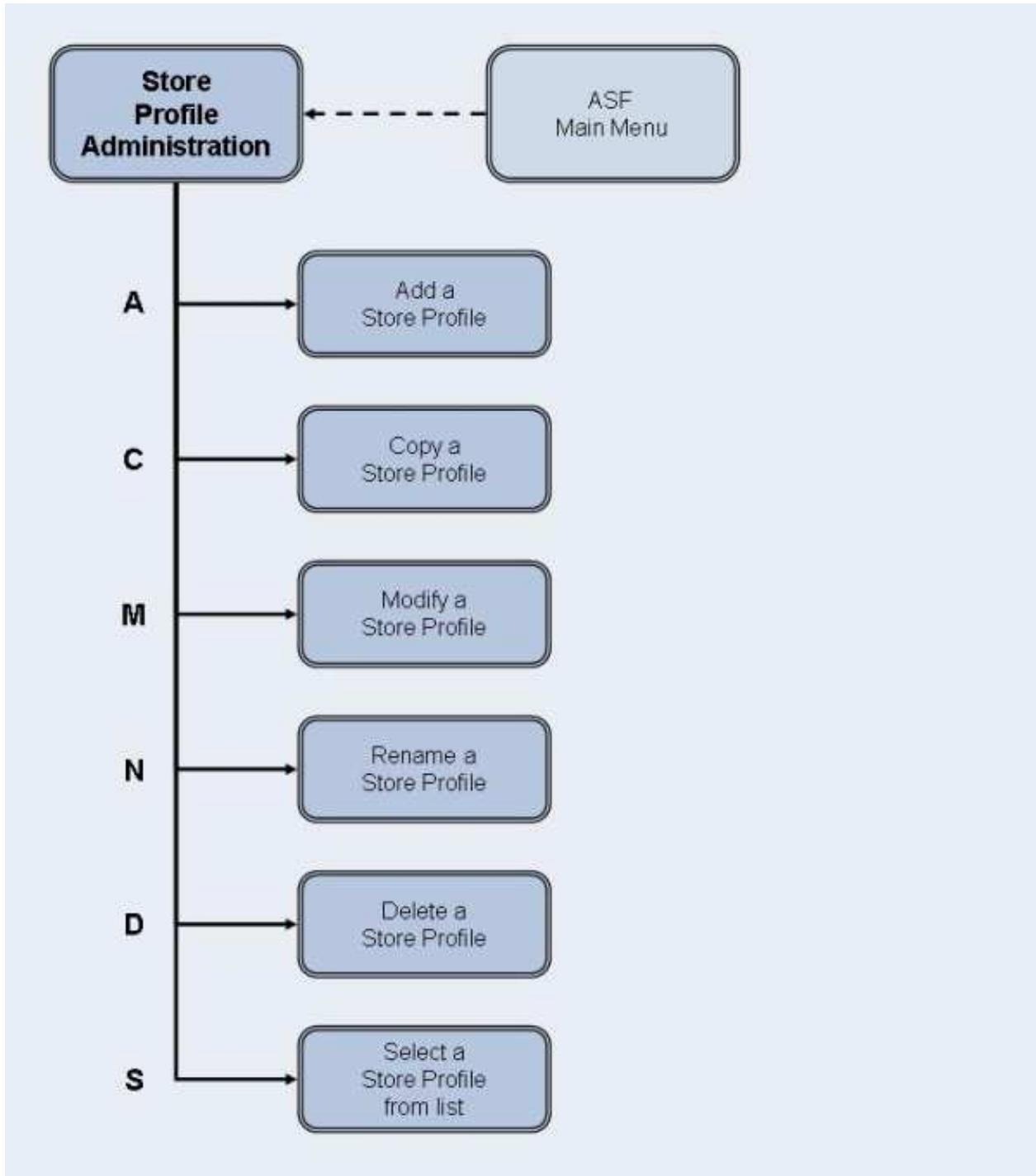
The "Start file" field displays the first file ID of the current page. If you overwrite this field, the list will start from the specified file ID. If the corresponding file is not active, the list will start with the next smaller file ID or with the first page. If the value is higher than the highest possible file ID, the last page will be displayed.

When you have finished marking your selections, you must press PF6 to store them. If you press PF3 while the active help screen is displayed, then the active help screen is deselected and all your changes are ignored.

**Note:**

*In the active help screen of the file selection, you can only select file IDs of currently active files. In the screen "Link Files to Database" you can even specify file IDs of inactive files.*

## Store Profile Administration



**Figure 3-26: Store Profile Administration Menu****Screen Layout for Store Profile Administration**

```

18:55:02          *** A D A B A S Statistics Facility ***          2008-01-23
USERID           - Store profile administration -                 MPS00001

                Code                Service
                -----
                A   Add a store profile
                C   Copy a store profile
                M   Modify a store profile
                N   Rename a store profile
                D   Delete a store profile
                S   Select store profile from list
                ?   Help
                .   Terminate
                -----

Enter code : _

Profile : _____

Direct command ==> _____
Enter-PF1---PF2---PF3---PF4---PF5---PF6---PF7---PF8---PF9---PF10--PF11--PF12---
Help More Term                                     Menu

```

**Figure 3-27: Menu for Store-Profile Administration****Purpose**

This screen is used for the administration of Store Profiles. By selecting the appropriate code, services to add new profiles, or to modify, rename, copy or delete existing profiles can be selected.

**Screen selection**

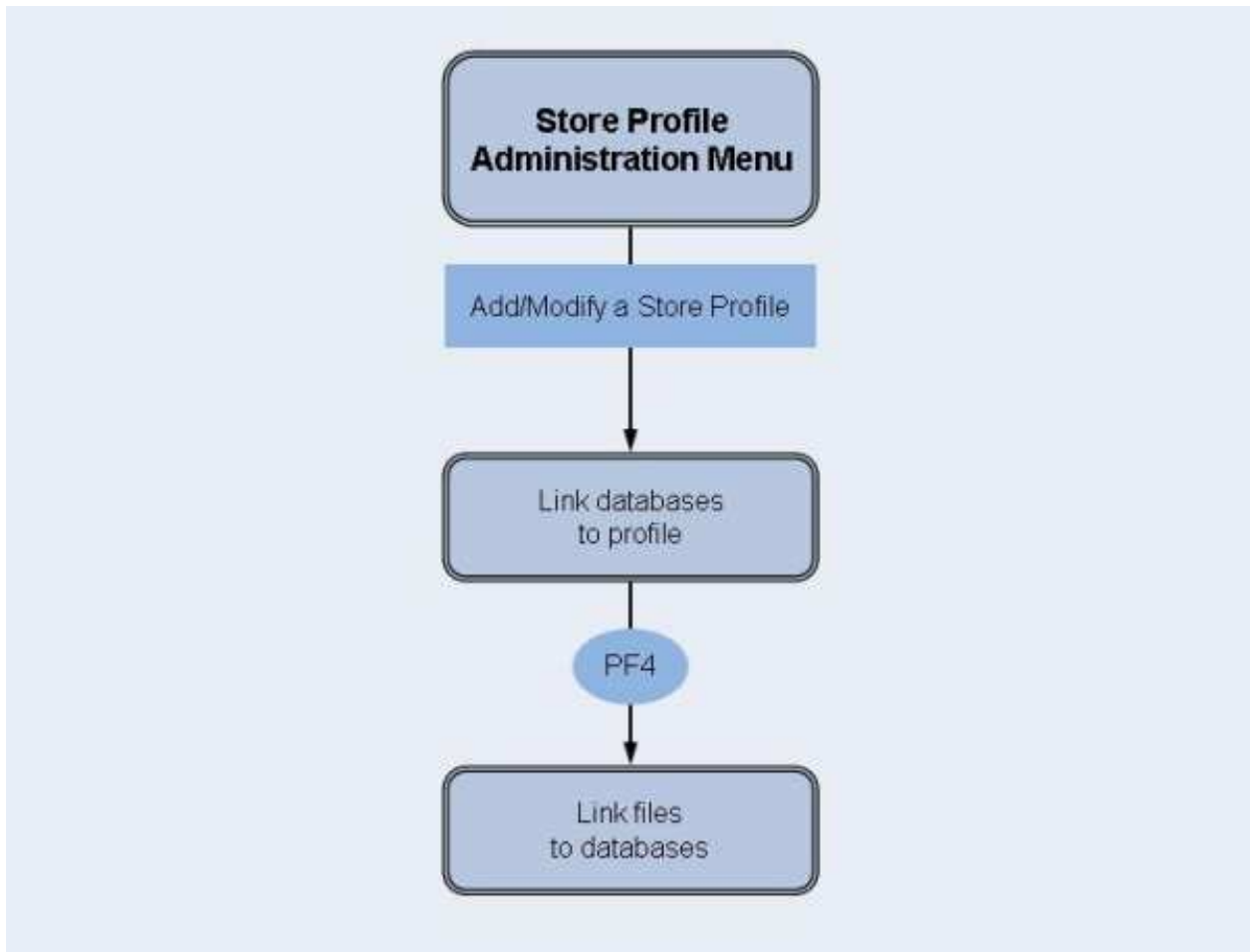
This menu is reached by selecting the service code "S" in the main menu.

**Screens used when defining an Evaluation Profile**

You use several screens when adding or modifying a Store Profile. The screens are:

- Store-Profile administration.
- Link databases to profile.
- Link files to database.

The screens are accessed as follows:



**Figure 3-28: Adding/modifying a Store Profile**

The "Link databases to profile" and "Link files to database" screens are described in the section Evaluation Profile Administration.

## Service Codes

### Code A: Add a store profile

Select this service to add a new Store Profile to the list of Store Profiles. When you type the name of the new profile at the "Profile:" prompt and press ENTER, a screen appears in which you can optionally supply an alias name for the new profile.

An alias name can be up to 3 characters long. If you type an alias name, it can be used subsequently instead of the profile name in any input field which requires a profile name. If you do not wish to provide an alias name for the profile, simply press ENTER.

Subsequently, the screen "Link databases to profile" appears.

### **Code C: Copy a store profile**

Select this service to copy an existing Store Profile to a new Store Profile. Type the name of the existing Store Profile in the "Profile" input field. When you press ENTER, a screen appears in which you specify the name and alias of the new profile. You do not have to specify an Evaluation Type, since this only applies to Evaluation Profiles.

### **Code M: Modify a store profile**

Select this service to modify an existing Store Profile. Type the name or the alias of the Store Profile you wish to modify in the "Profile" input field. Subsequently the screen "Link databases to profile" appears. You can then add new databases and files to the Store Profile, or remove databases and files from the profile.

### **Code N: Rename a store profile**

Select this service to change the name of a Store Profile or the alias or both. A screen appears in which you can overwrite the existing names with new names.

### **Code D: Delete a store profile**

Select this service to delete an existing Store Profile. Type the name of the Store Profile to be deleted in the "Profile" input field. A screen appears in which you must type the name (again!) and alias of the Store Profile. After you press ENTER, you will be prompted to press ENTER again to confirm the deletion.



#### **Warning:**

**If a Store Profile is used to create ASF nucleus or trend records, and these records are subsequently exported, the Store Profile must not be deleted, otherwise you cannot reload the records with the Import option. The reason is that the ASF records contain the ID (in numerical form) of the Store Profile which created them, so the Store Profile must still exist when records are imported, otherwise an invalid reference occurs. You can, however, use the Transfer option in the ASF Utilities Menu to reload the records.**

### **Code S: Select store profile from list**

Select this service to start the active help function for the "Profile" input field.

## **Input field description**

#### **Enter code:**

Enter the code of the service you wish to activate.

#### **Profile:**

The name of the Store Profile which ASF will use for the selected service. Type "\*" to get an active help list.



# User Maintenance

**Note:**

This option is only available when Natural Security is being used. Furthermore, you must be registered in Natural Security as Administrator to select this option. To add a user to the list, you must modify the Natural Security group ASFGROUP. See the section Step 5: Setting up User Security in the *ASF Installation* documentation for details.

```

18:56:41          **** A D A B A S Statistics Facility ****          2008-01-23
USERID            - Security maintenance -                          MPA00001

                                     !mod. !mod. !      !
                                     !store!eval.!      !
No  ! User-ID  ! Name                                     !prof.!prof.!store!evaluate
-----+-----+-----+-----+-----+-----+-----+< ALL >
1   ! ASFADMIN ! ASF Administrator          ! X  ! X  ! X  ! X
2   ! BATCH    ! Batch ASF                        ! X  ! X  ! X  ! X
2   !          !                                     ! -  ! -  ! -  ! -
3   !          !                                     ! -  ! -  ! -  ! -
4   !          !                                     ! -  ! -  ! -  ! -
5   !          !                                     ! -  ! -  ! -  ! -
6   !          !                                     ! -  ! -  ! -  ! -
7   !          !                                     ! -  ! -  ! -  ! -
8   !          !                                     ! -  ! -  ! -  ! -
9   !          !                                     ! -  ! -  ! -  ! -
10  !          !                                     ! -  ! -  ! -  ! -

Direct command ==> _____
Enter-PF1---PF2---PF3---PF4---PF5---PF6---PF7---PF8---PF9---PF10--PF11--PF12---
      Help      Term      Save  -    +                               Menu
    
```

**Figure 3-29: Menu for User Maintenance**

## Purpose

This screen is used for the administration of user access to ASF. You use the User Maintenance service to authorize users to perform one or more of the following actions: run Evaluations, modify Store Profiles, store data or modify Evaluation Profiles.

## Screen selection

This menu is reached by selecting the service code "U" in the main menu (if Natural Security has been installed).

## Description

You can authorize users to modify Store Profiles, modify Evaluation Profiles, store data or to run Evaluations by placing a mark in the appropriate column(s). The names of the users who are registered in the Natural Security group ASFGROUP are displayed automatically. The "Modify Evaluation Profiles" authorization includes also the authorization to modify Predefined Evaluations. When you have finished, press PF6 to save the changes.

## ASF Utilities and Services

```

18:59:42          *** A D A B A S  Statistics Facility ***          2008-01-23
USERID           - ASF Utilities and Services Menu -             MUM00001

                Code          Service
                -----
                A      Condense records to average records
                D      Condense records to delta records
                S      Synchronize / regenerate store times
                T      Transfer from foreign ASF system
                V      ASF Version Information
                F      ASF System File Maintenance
                P      Profile Maintenance
                X      Userexit Maintenance
                I      ASF Application Program Interface
                1/2    API Example 1/2
                R/M    SYSRDC Debugger / ASF Trace Maintenance
                ./?    Terminate / Help
                -----

Enter code:  _

Direct command ==> _____
Enter-PF1---PF2---PF3---PF4---PF5---PF6---PF7---PF8---PF9---PF10--PF11--PF12---
      Help  More  Term                                     Menu

```

**Figure 3-33: Menu for ASF Utilities and Services**

### Purpose

The menu lists the available ASF Utilities and Services. You can select one of the listed utilities or services by typing the corresponding one-letter code in the "Enter code" field. When you have entered the input data, press ENTER to activate the corresponding utility or service.

### Screen selection

This menu is reached by selecting the service code "A" in the Main Menu.

### Description

The ASF Utilities and Services are described in detail in the section ASF Utilities and Services.