

# Solaris Installation

- License Keys
  - Installation Steps
  - Step by Step Installation of all Components
  - Starting to Use the Software
- 

## License Keys

License keys for the runtime component only are supplied separately from the software installation mechanism. You should make sure your license file is placed in:

`$SAG/common/LKey`

## Installation Steps

During the install you must identify the configuration file. Please refer to the section Installation Planning and Preparation for information on how to manage that part of the installation. The installation comprises the following steps;

- Log into the Software AG Installer.
- Select the installation directory location.
- Select the product component(s) to be installed.
- Confirm the Installer should proceed.
- Execute the product activation step.

## Step by Step Installation of all Components

On the Software AG Installer Welcome Screen, click *Next* to start the installation.

**Note:**

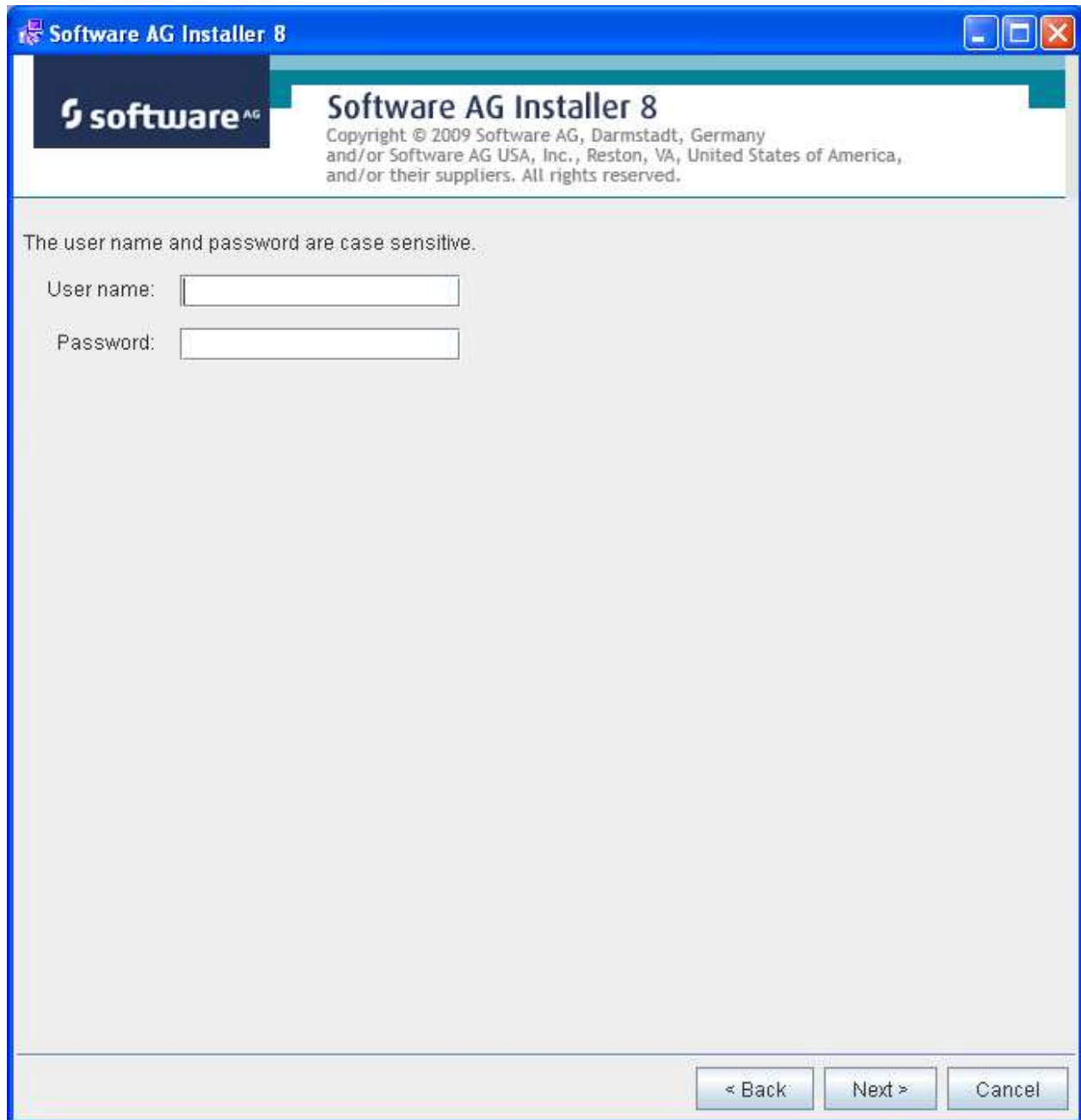
The location of the SAG environment file will be *sagenv.new*. It resides in the directory where the Software AG products are installed (\$SAG).

**Note:**

Screenshots provided in this section are taken from an X Client running on a Windows machine.



Identify yourself to the Installer by logging in with your credentials as shown below. Click Next to proceed to the next step:



Software AG Installer 8

**software**<sup>AG</sup>

**Software AG Installer 8**  
Copyright © 2009 Software AG, Darmstadt, Germany  
and/or Software AG USA, Inc., Reston, VA, United States of America,  
and/or their suppliers. All rights reserved.

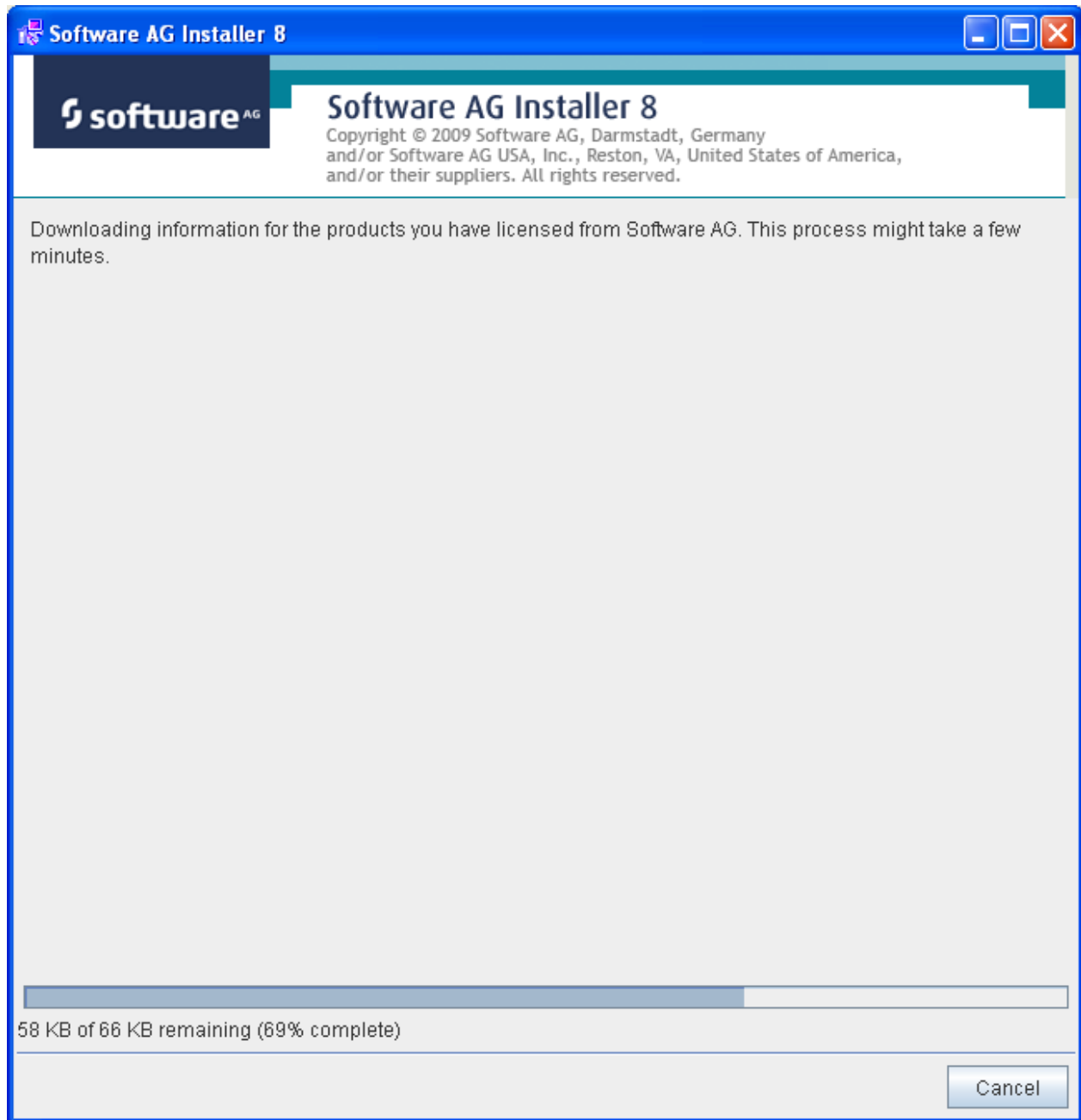
The user name and password are case sensitive.

User name:

Password:

< Back    Next >    Cancel

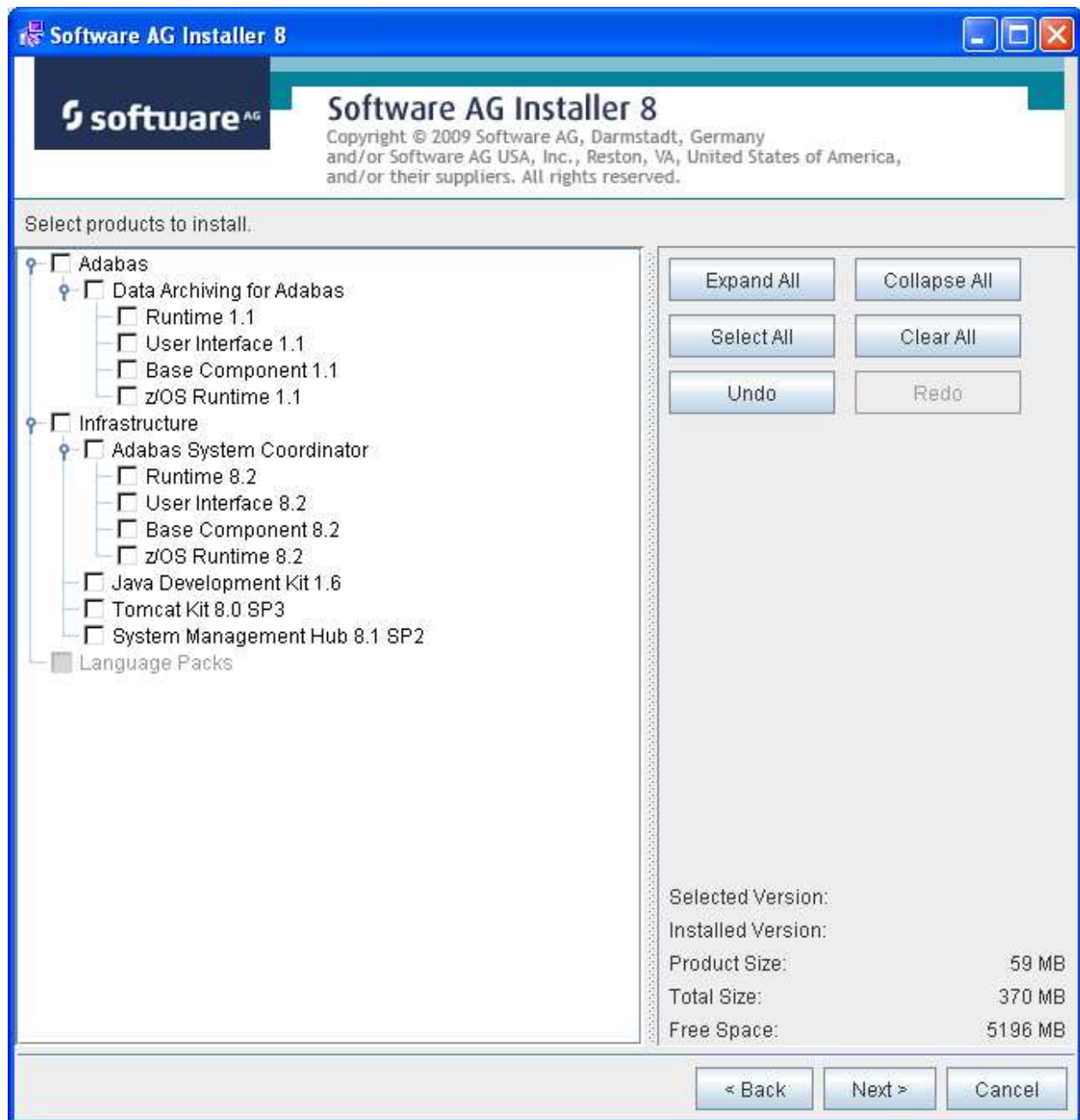
The Installer acquires information about a) all the products for which you are licensed and b) are able to be installed using the Installer. You can see this happening (below). It may take a few minutes:



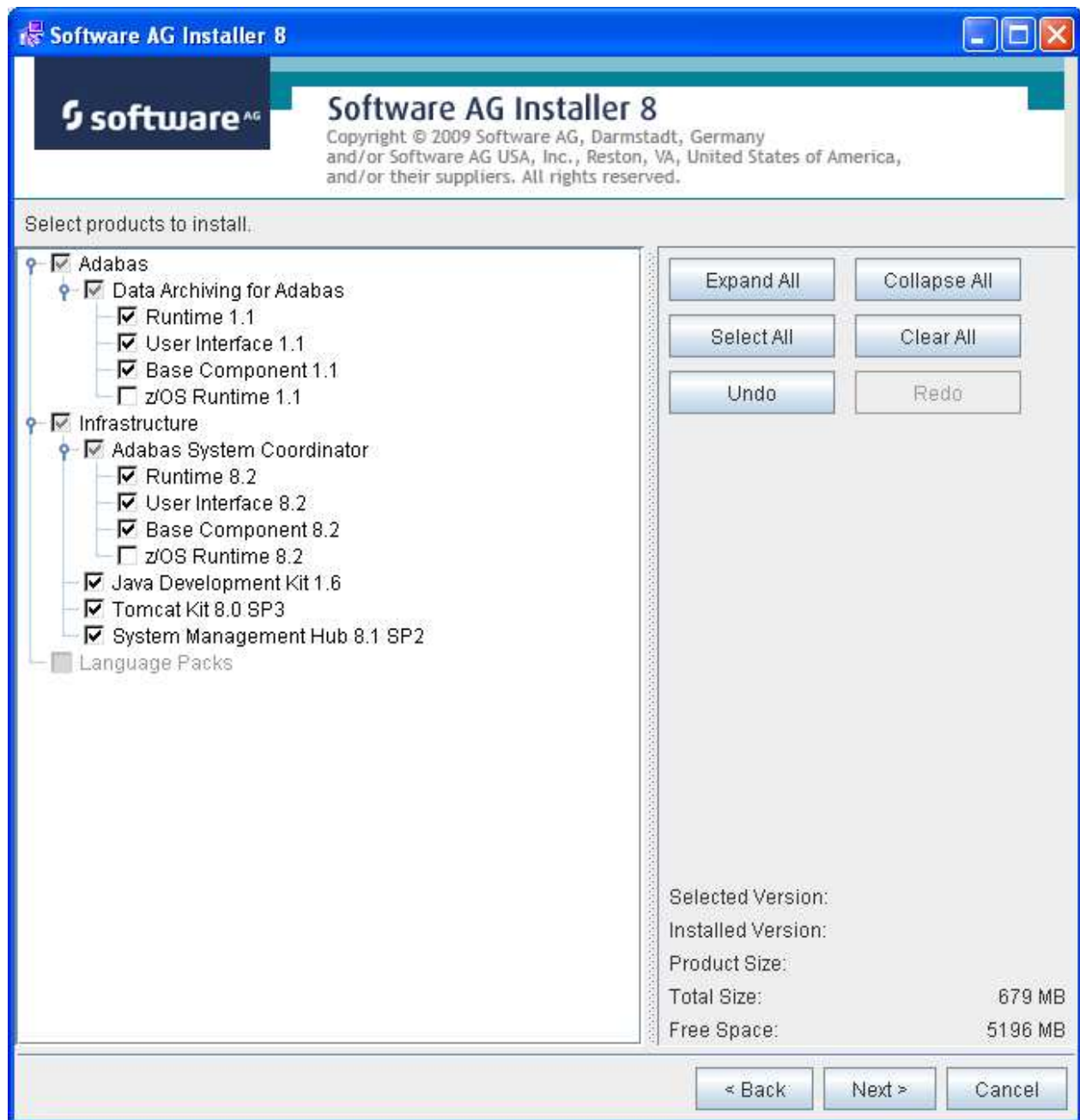
Once the Installer has acquired all licensing information for your site, it will show the default install location. You can alter this if you wish but make sure you understand the implications of changing it for all the products being installed. Click Next to proceed:



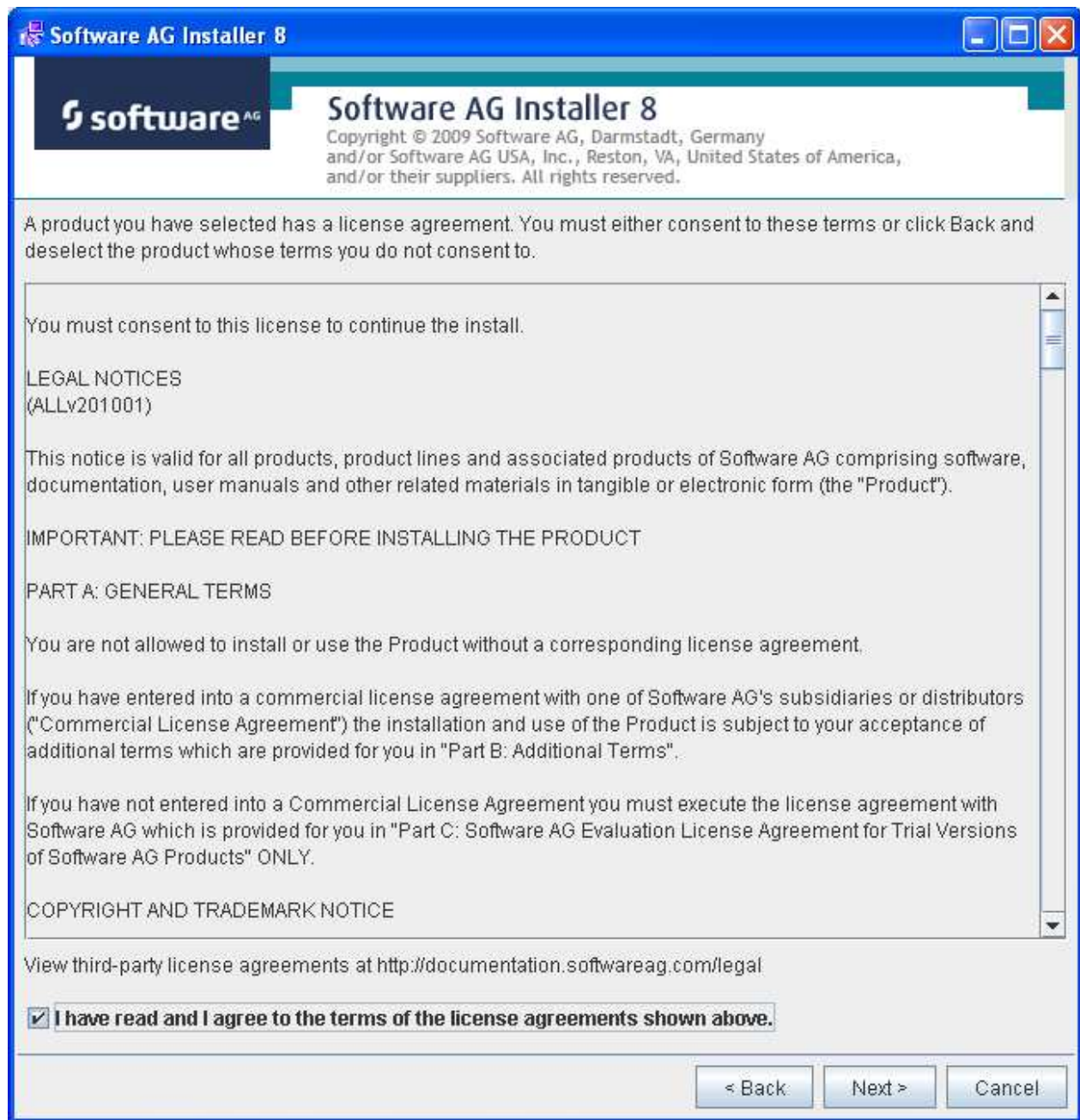
You can now choose the products that you wish to install:



You can see below the products which have been selected. In making these choices, other implied choices of sibling and prerequisite products are also made automatically. Once your selections are made click Next to proceed:

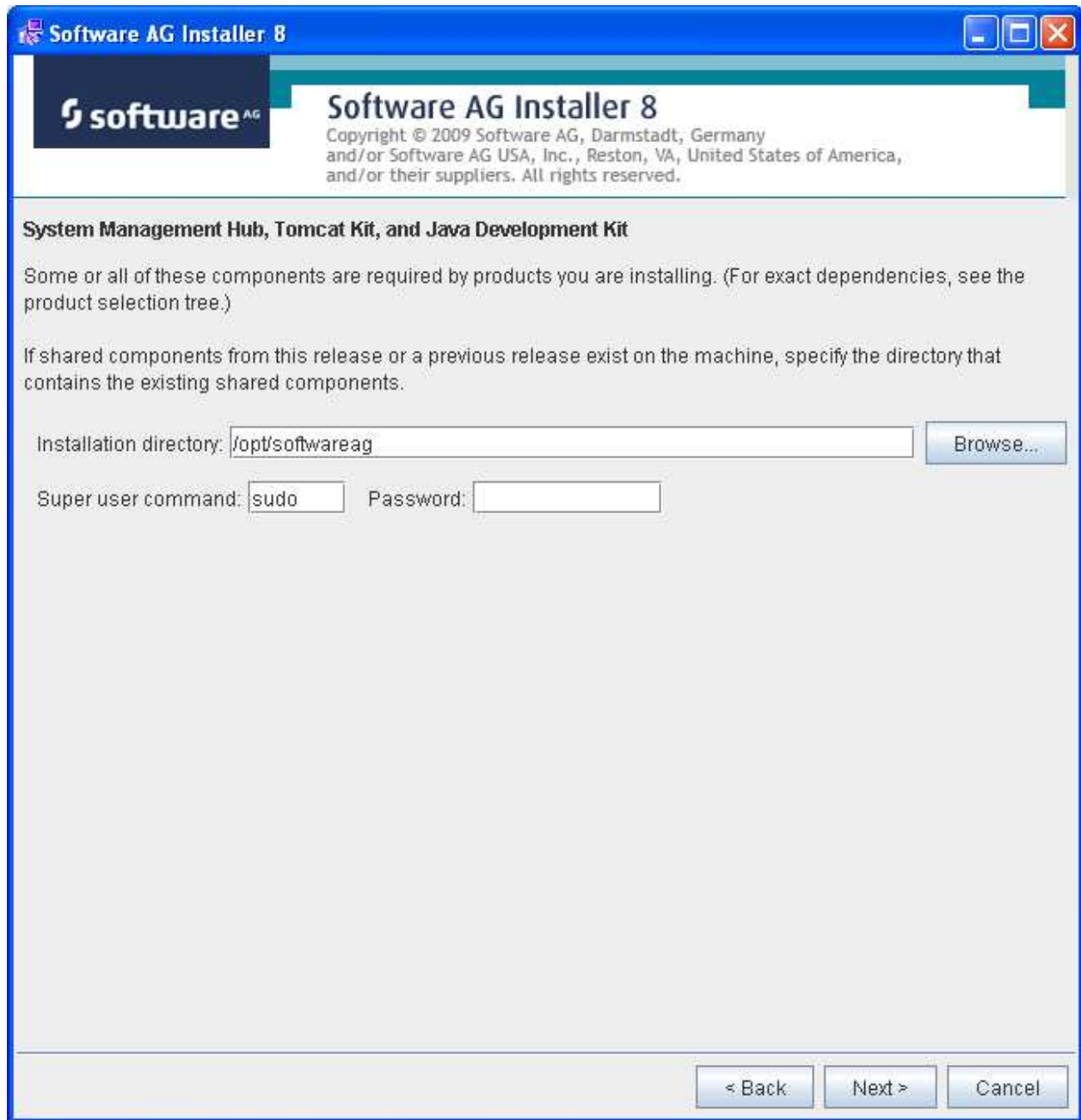


Read the terms and conditions and when you have finished, confirm you have done so by checking the box. Click Next to continue:

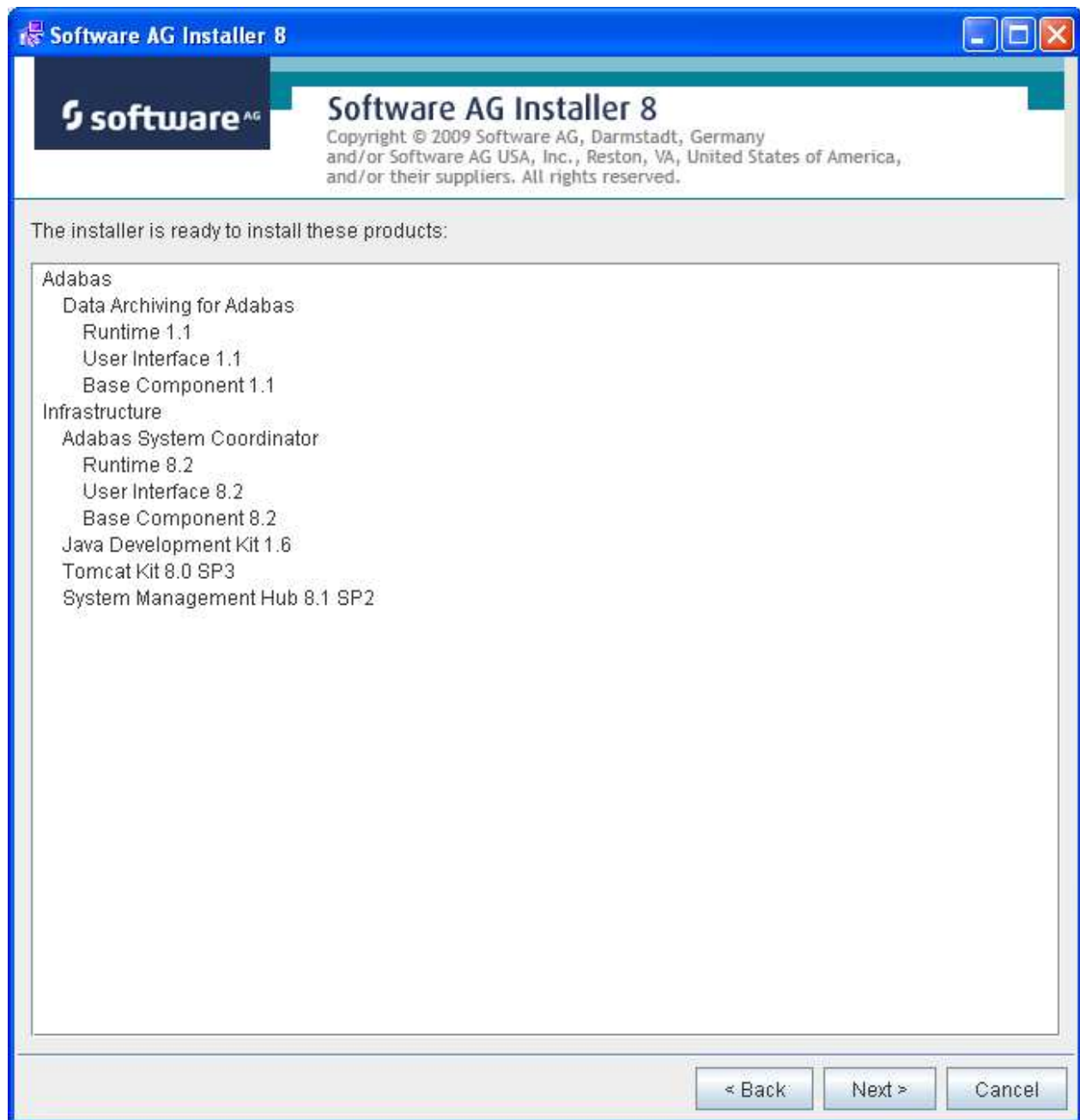


The following display is shown if the user interface is to be installed. This allows you to determine the install location for the prerequisite System Management Hub, which you normally allow to default. Click Next to proceed to the next step:

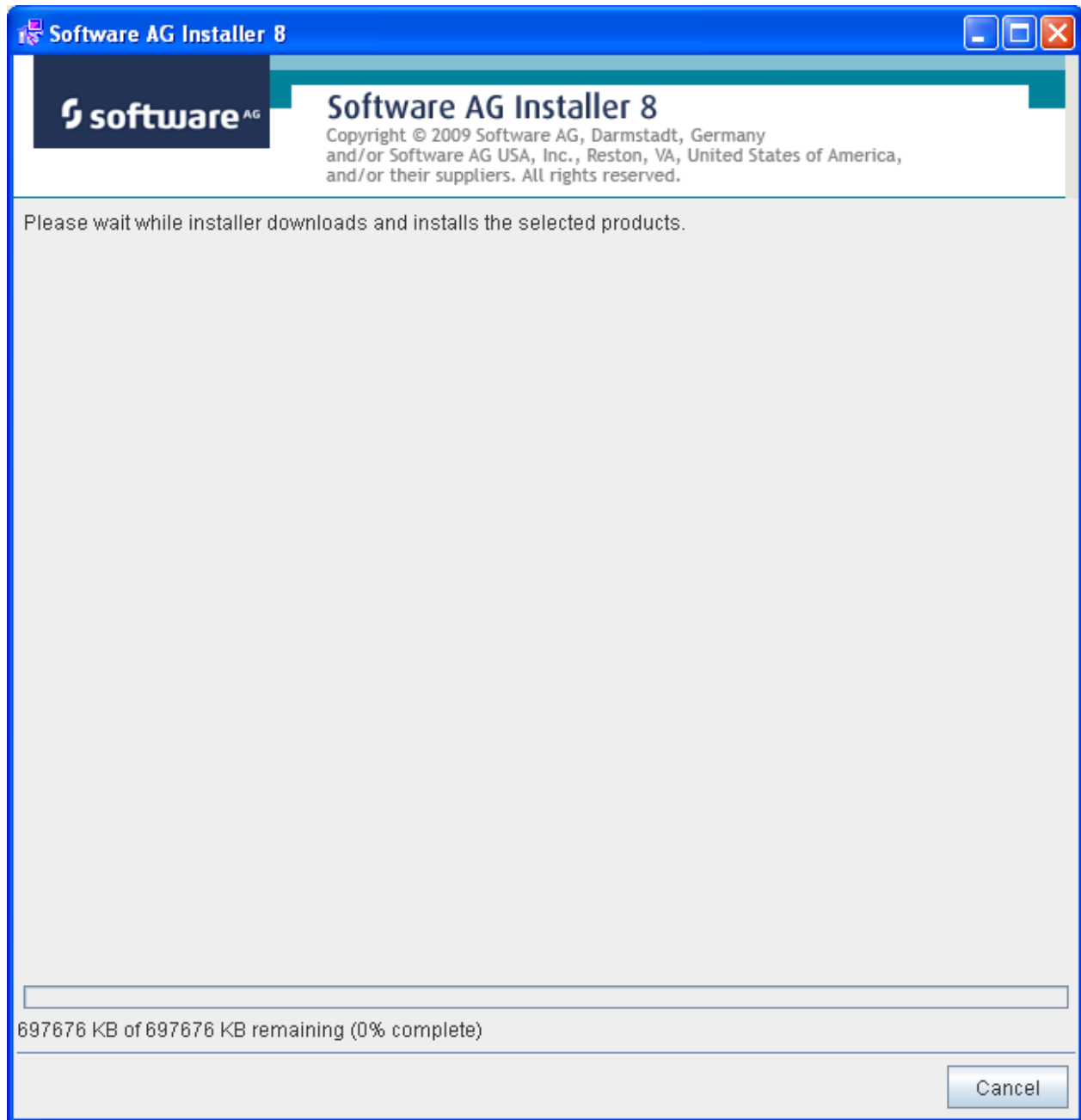




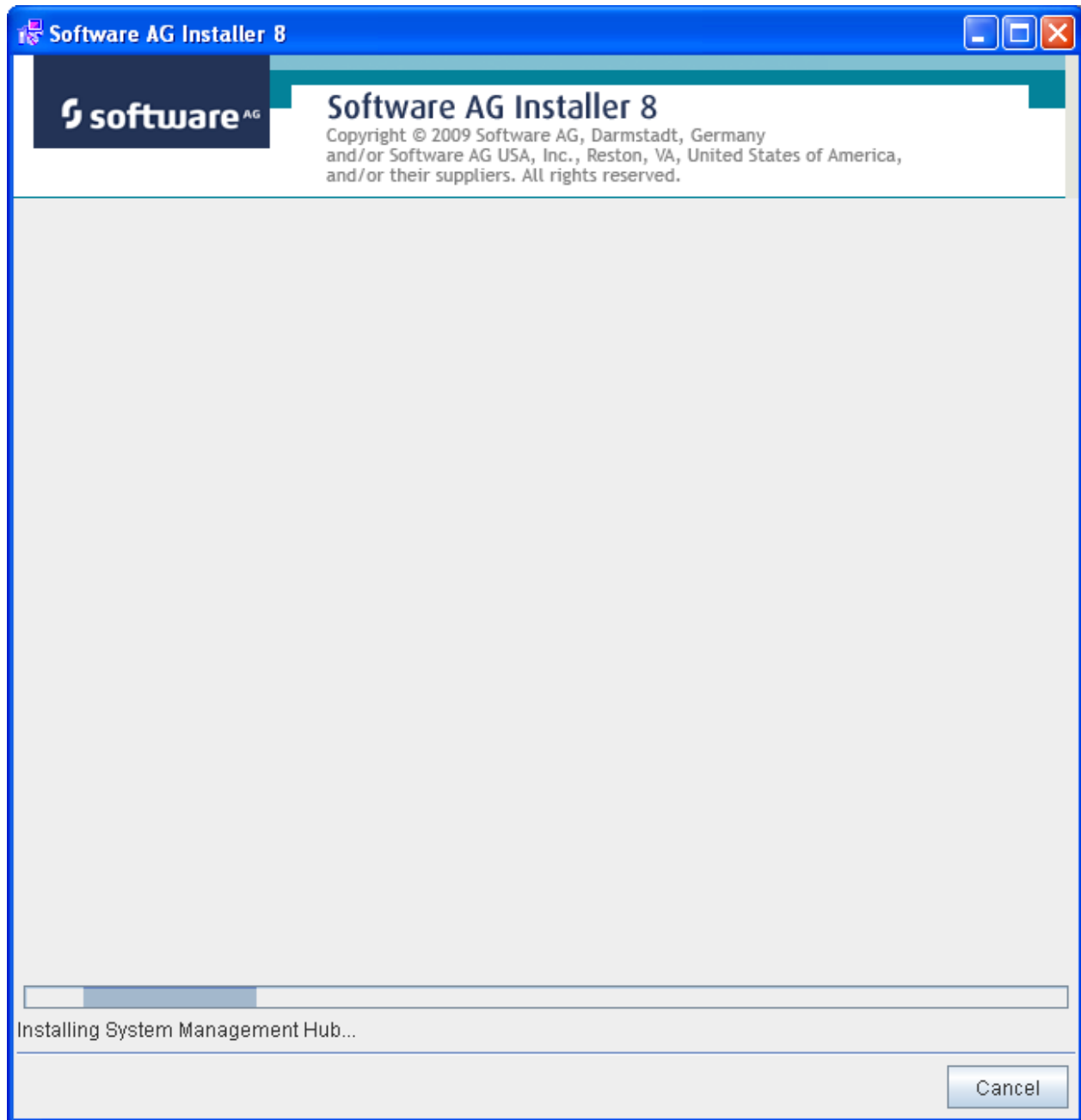
A list of the products selected for install is provided. Click Next to perform the installation:



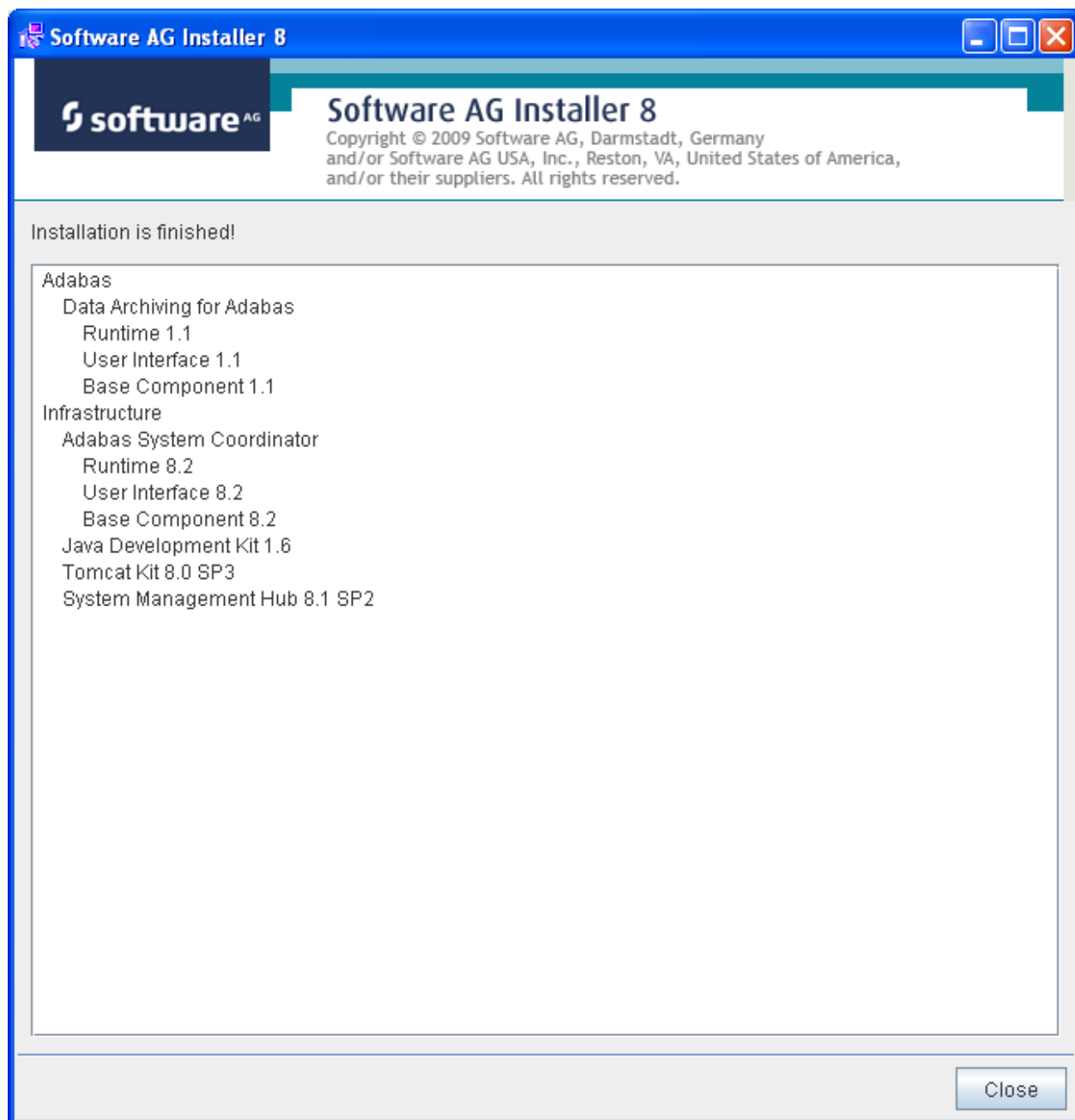
The installation may take some time. In the case of Data Archiving for Adabas the installation is usually quite quick whereas the install of the prerequisite System Management Hub (for installing the User Interface) takes longer.



The section for installing the System Management Hub has several interaction screens where the defaults can be taken. If you wish to alter the defaults please consult the documentation for the System Management Hub to understand their meanings and implications. The screen below shows one of the many you will see for the System Management Hub installation:




Once the installation of all the products is completed you will see the following confirmation screen:



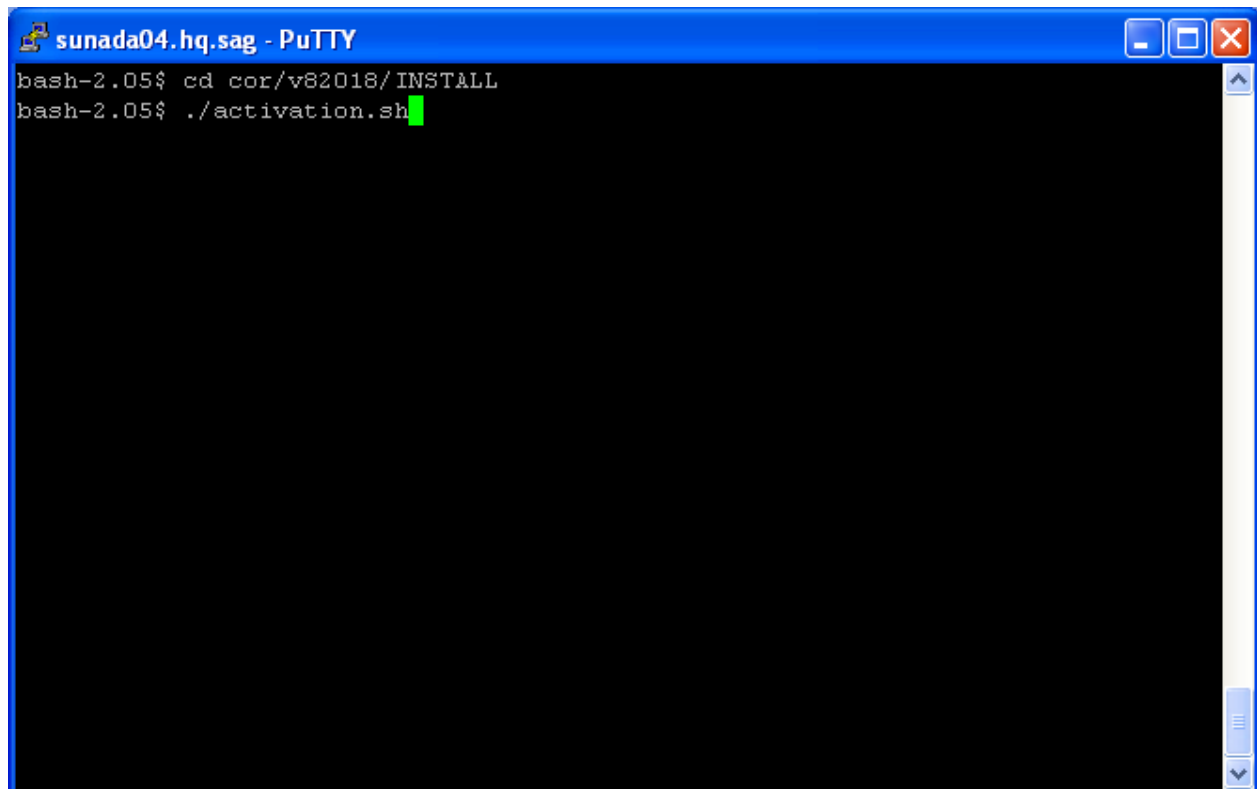
At this point the primary install steps have been completed but you must now Activate the installation. Click Close (above).

Navigate to the install location that was chosen previously to install to (the default is `/opt/softwareag`). Then source `sagenv.new`.



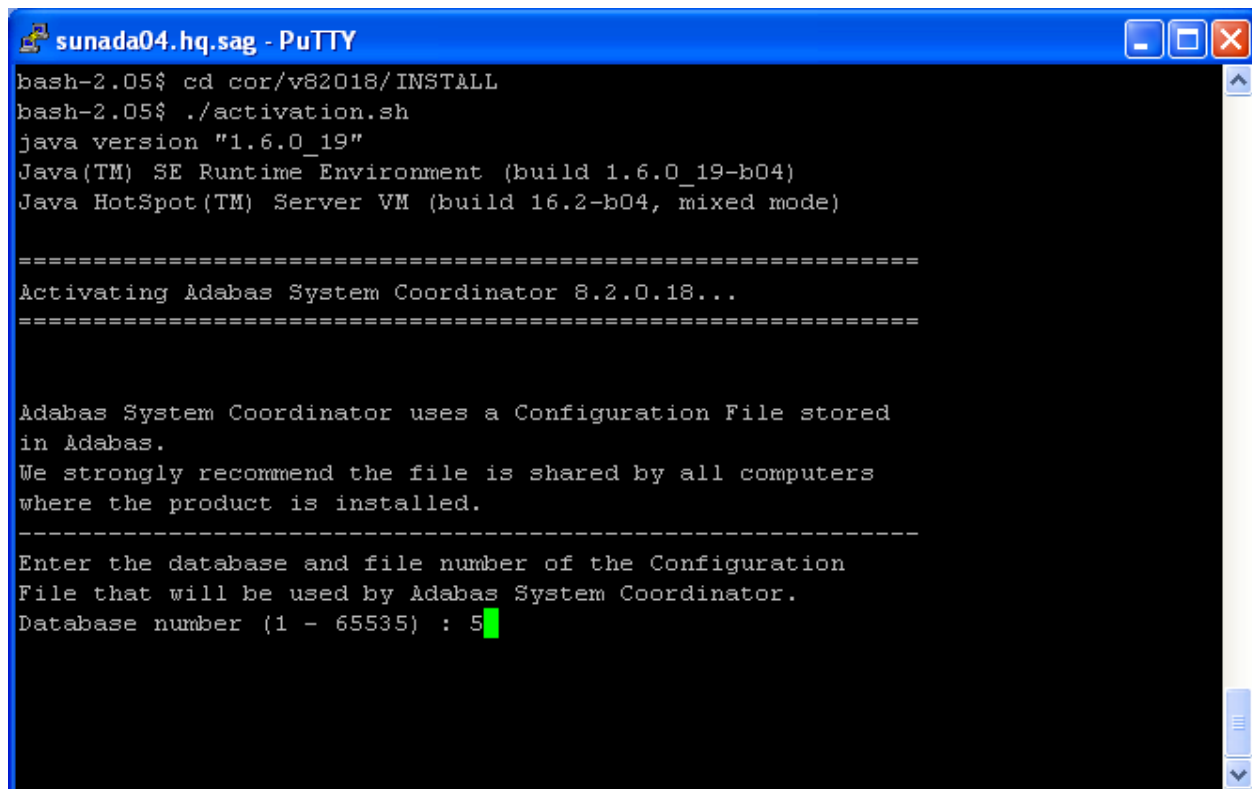
```
sunada04.hq.sag - PuTTY
bash-2.05$ . ./sagenv.new
```

Next navigate to the subdirectory *cor/v82018/INSTALL* and run the command *./activation.sh*.



```
sunada04.hq.sag - PuTTY
bash-2.05$ cd cor/v82018/INSTALL
bash-2.05$ ./activation.sh
```

Identify the database where the configuration file is already installed (during an installation on another computer) or where you wish to establish the file. In the example (below) we choose database number 5:

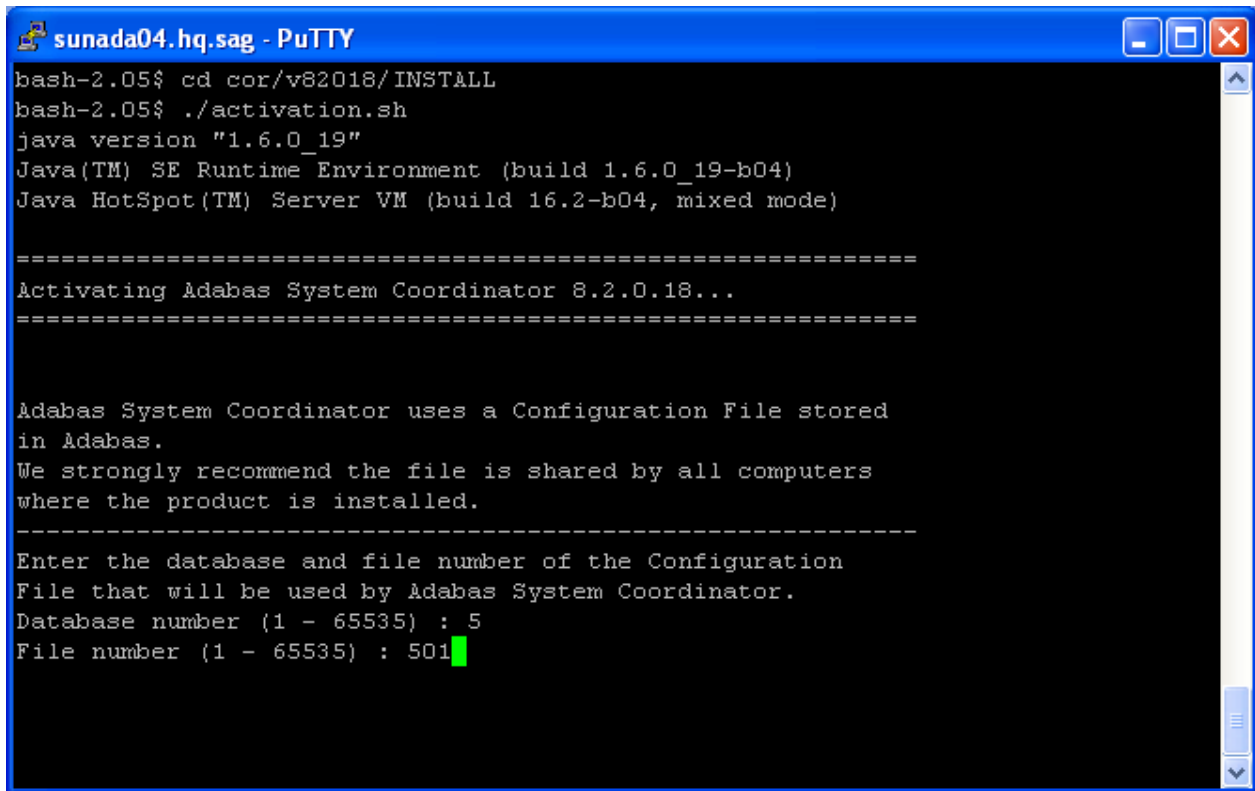


```
sunada04.hq.sag - PuTTY
bash-2.05$ cd cor/v82018/INSTALL
bash-2.05$ ./activation.sh
java version "1.6.0_19"
Java(TM) SE Runtime Environment (build 1.6.0_19-b04)
Java HotSpot(TM) Server VM (build 16.2-b04, mixed mode)

=====
Activating Adabas System Coordinator 8.2.0.18...
=====

Adabas System Coordinator uses a Configuration File stored
in Adabas.
We strongly recommend the file is shared by all computers
where the product is installed.
-----
Enter the database and file number of the Configuration
File that will be used by Adabas System Coordinator.
Database number (1 - 65535) : 5
```

Identify the configuration file number. In the example (below) we choose file 501:



```
sunada04.hq.sag - PuTTY
bash-2.05$ cd cor/v82018/INSTALL
bash-2.05$ ./activation.sh
java version "1.6.0_19"
Java(TM) SE Runtime Environment (build 1.6.0_19-b04)
Java HotSpot(TM) Server VM (build 16.2-b04, mixed mode)

=====
Activating Adabas System Coordinator 8.2.0.18...
=====

Adabas System Coordinator uses a Configuration File stored
in Adabas.
We strongly recommend the file is shared by all computers
where the product is installed.
-----
Enter the database and file number of the Configuration
File that will be used by Adabas System Coordinator.
Database number (1 - 65535) : 5
File number (1 - 65535) : 501
```

Having identified the configuration file the activation needs to understand whether the file is to be:

- Shared

Software AG strongly recommends one configuration file is shared by all computers where the software is to be installed. By doing this the vast majority of complex network configuration is automated. By identifying the file is to be shared you are indicating it has already been created from a previous installation of this software on another computer.

- Created

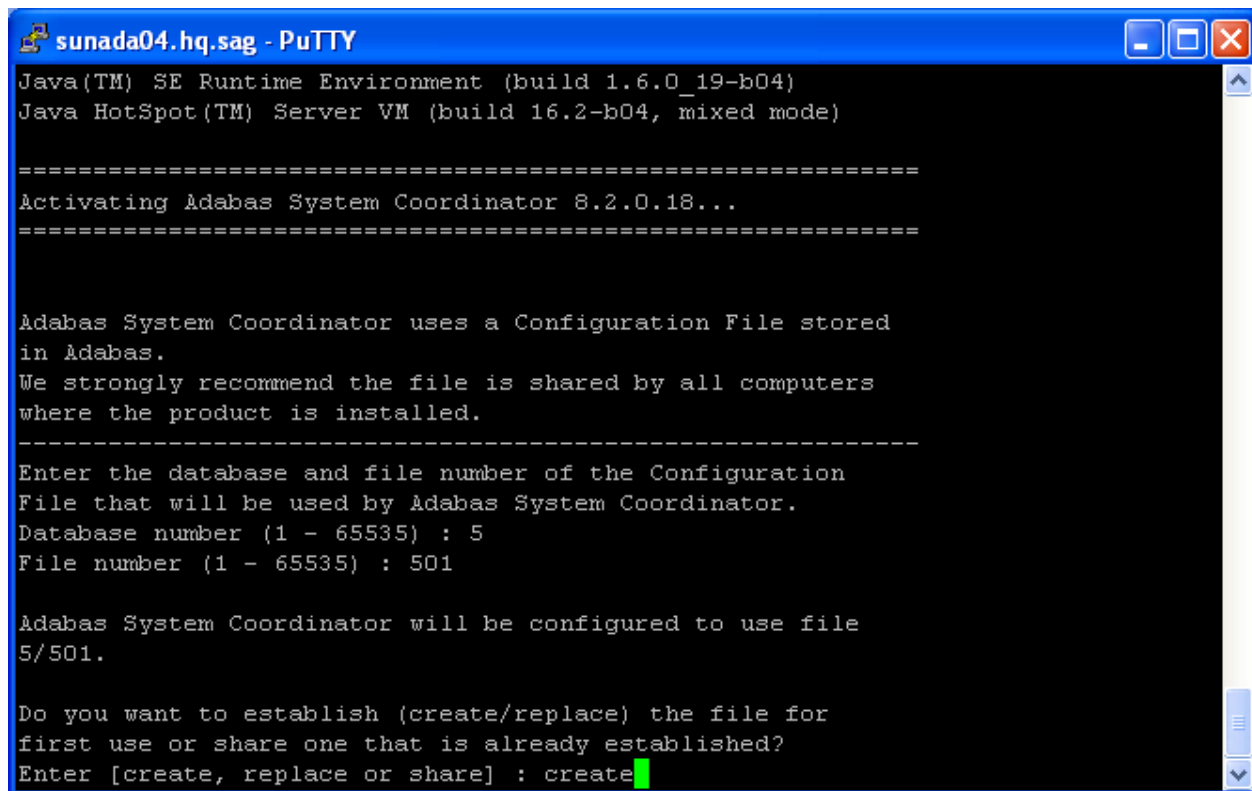
If this is the first (or only) computer where the software is to be installed then you must establish the file as new. This file may then be shared by installations on other computers (as recommended by Software AG), or similarly...

- Replaced

You may be re-establishing the software and the configuration file on this computer in which case you wish to replace a configuration file that previously existed.

In the example (below) we choose to create the file for the first time (choosing replace would do the same thing):





```
sunada04.hq.sag - PuTTY
Java(TM) SE Runtime Environment (build 1.6.0_19-b04)
Java HotSpot(TM) Server VM (build 16.2-b04, mixed mode)

=====
Activating Adabas System Coordinator 8.2.0.18...
=====

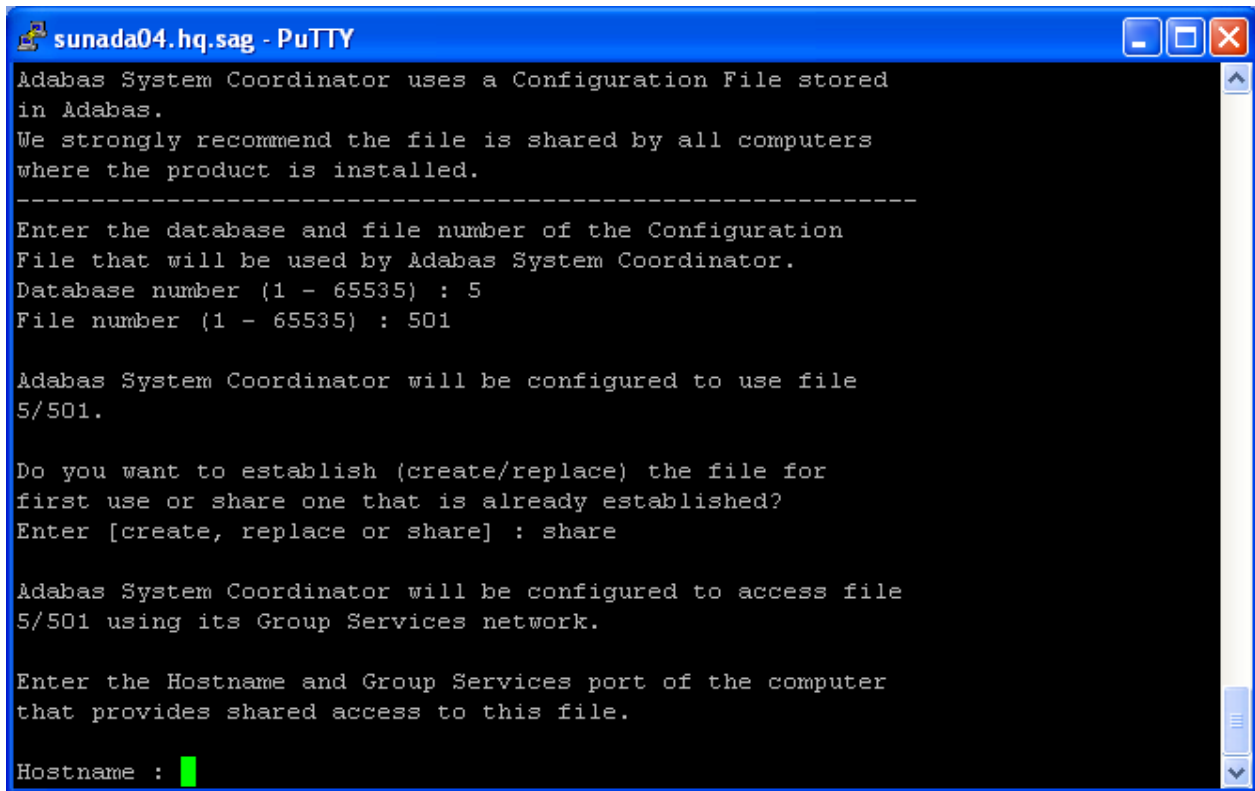
Adabas System Coordinator uses a Configuration File stored
in Adabas.
We strongly recommend the file is shared by all computers
where the product is installed.
-----
Enter the database and file number of the Configuration
File that will be used by Adabas System Coordinator.
Database number (1 - 65535) : 5
File number (1 - 65535) : 501

Adabas System Coordinator will be configured to use file
5/501.

Do you want to establish (create/replace) the file for
first use or share one that is already established?
Enter [create, replace or share] : create
```

At this point the activation will complete.

When the activation is completed you can go to start using the software as below. But if you chose to share a configuration file that already exists (above) then you will be further prompted to identify the home of the configuration file as follows:



```
sunada04.hq.sag - PuTTY
Adabas System Coordinator uses a Configuration File stored
in Adabas.
We strongly recommend the file is shared by all computers
where the product is installed.
-----
Enter the database and file number of the Configuration
File that will be used by Adabas System Coordinator.
Database number (1 - 65535) : 5
File number (1 - 65535) : 501

Adabas System Coordinator will be configured to use file
5/501.

Do you want to establish (create/replace) the file for
first use or share one that is already established?
Enter [create, replace or share] : share

Adabas System Coordinator will be configured to access file
5/501 using its Group Services network.

Enter the Hostname and Group Services port of the computer
that provides shared access to this file.

Hostname : █
```

## Starting to Use the Software

### ▶ to use the software

1.

**Note:**

SMH must be restarted immediately after the install in order to function correctly for Archiving purposes.

Go to your browser and use <http://localhost:49981/smh> (assuming defaults have been used for SMH) or use you normal entry to SMH.

2. Select the main **Data Archiving for Adabas** node.

3. Within the tree you should select the **Services by ...** node. You should see the archive service for the runtime in the computer you have just installed. This should show a green traffic light which indicates that the service is active.

The screenshot displays the Solaris Management Console interface. On the left, a tree view shows the hierarchy: Managed Hosts > mcukayh.eur.ad.sag > Administrators > Adabas System Coordinator > Data Archiving for Adabas > Services by (group:computer:dae) > SAGAUTO:MCLUKAYH:AUTO-1. The selected service is highlighted in blue. On the right, the service details are shown:

### Adabas Archive Service

Group: SAGAUTO  
Computer: MCLUKAYH  
Daemon: AUTO-1

**Service Status Information**

Status:	Started
---------	---------

The installation is now complete. You can begin using Data Archiving for Adabas. See the section Getting Started for further information.