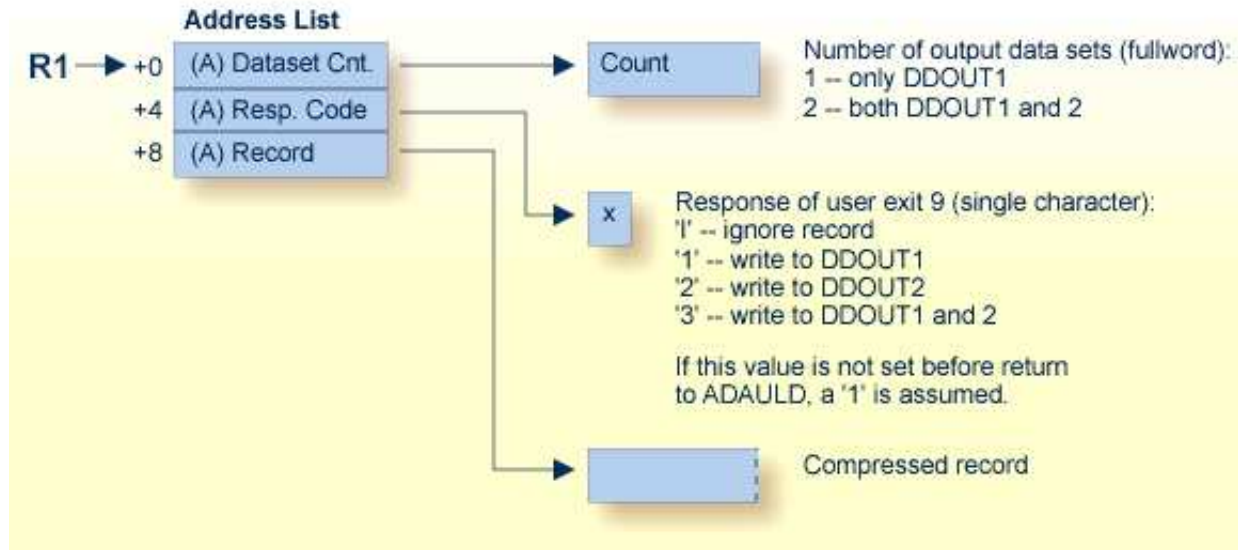


# User Exit 9 (ADAULD)

User exit 9 is called by ADAULD whenever a compressed record is ready to be written. The user exit decides whether a record is written to DD/OUT1, DD/OUT2, both, or neither.



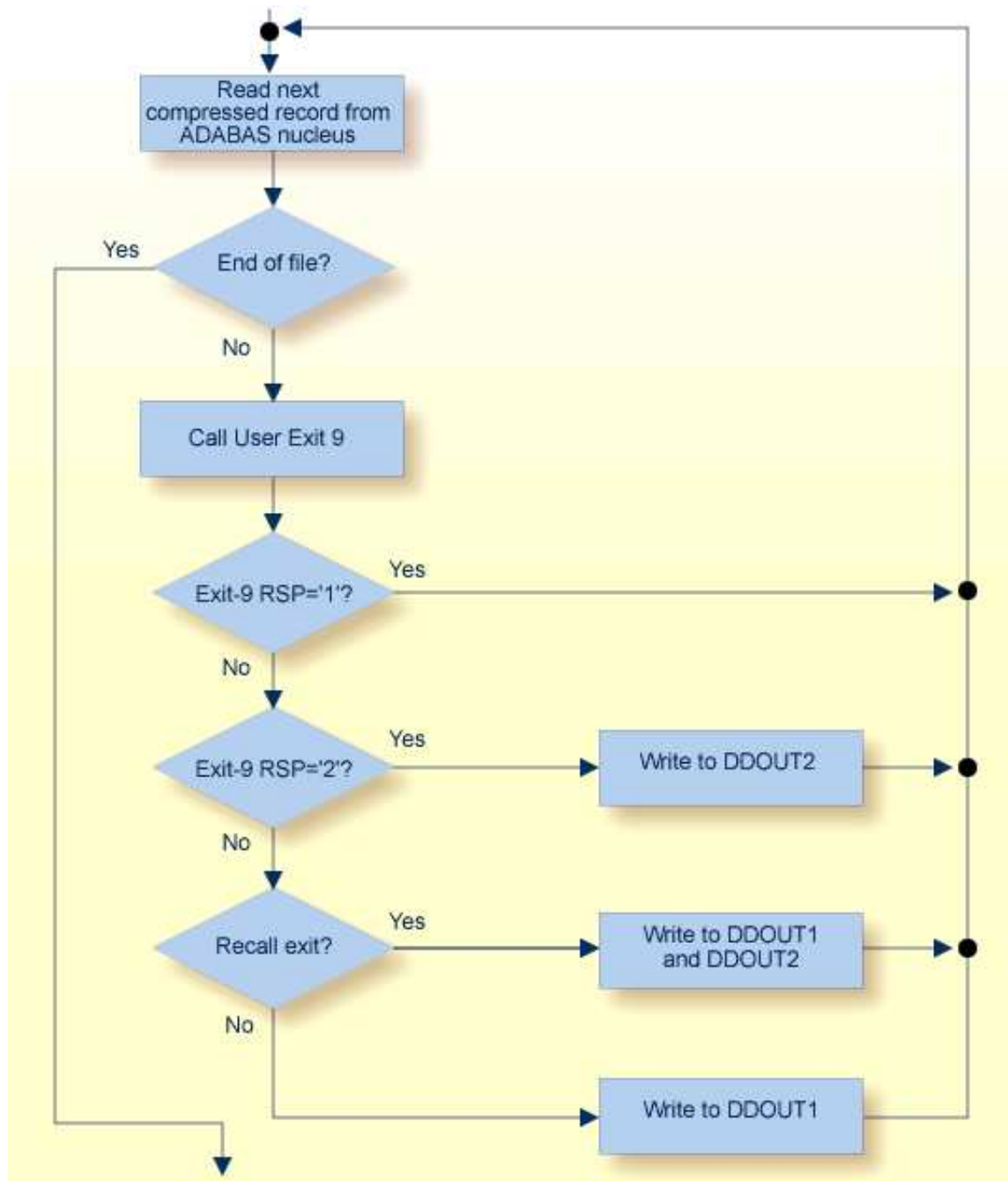
## ADAULD User Exit (9) Parameters

### Notes:

1. DDOUT1 & 2 must have the same block size, or an ADAULD error occurs.

The compressed record pointed to by the third address has the following structure:

```
AL2 (L1) total length (inclusive)
AL2 (L2) record length (inclusive)
AL4 (ISN)
XL (L2 - 8) '...compressed fields...'
XL (L1 - L2 - 2) '...DVT entries...'
```



### User Exit 9 Output Control Flow

The call to the user exit is made via a standard BASR 14,15 assembler instruction. All registers must be saved when control is received and restored immediately prior to returning control to ADAULD. The content of R15 is ignored.

## User Exit 9 Sample

Sample user exit 9 source is supplied in the Adabas source library in member USEREX9. A sample job to assemble and link the user exit is supplied in member ASMUEX9 of the Adabas sample job library. In BS2000 environments, you can use the sample exit assembly job, ASMUEX, to assemble and link all user exits.