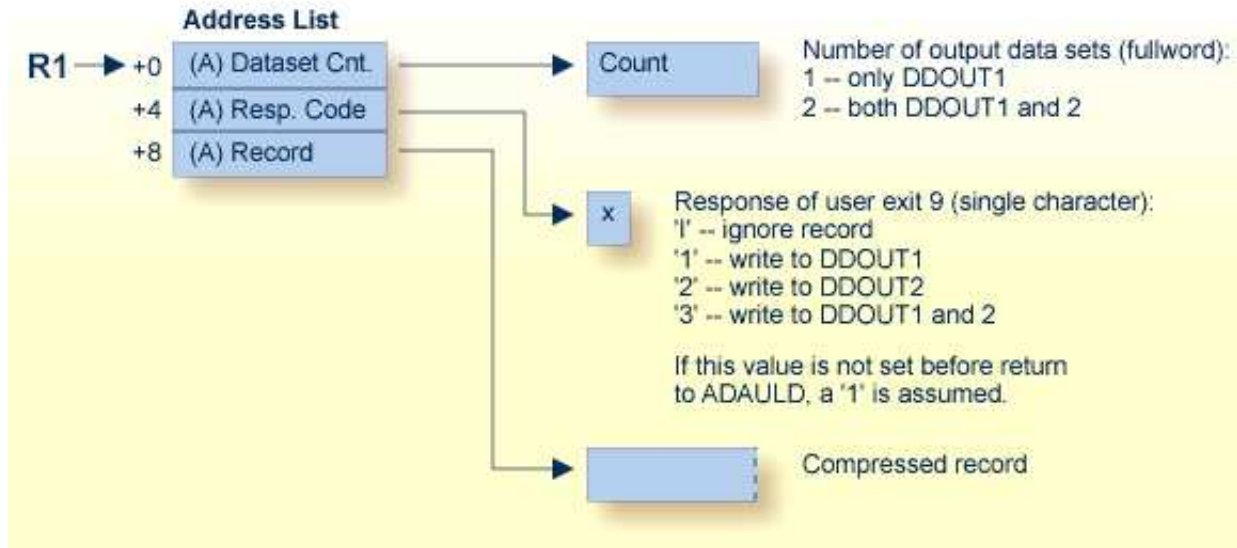


# User Exit 9 (ADAULD)

User exit 9 is called by ADAULD whenever a compressed record is ready to be written. The user exit decides whether a record is written to DD/OUT1, DD/OUT2, both, or neither.



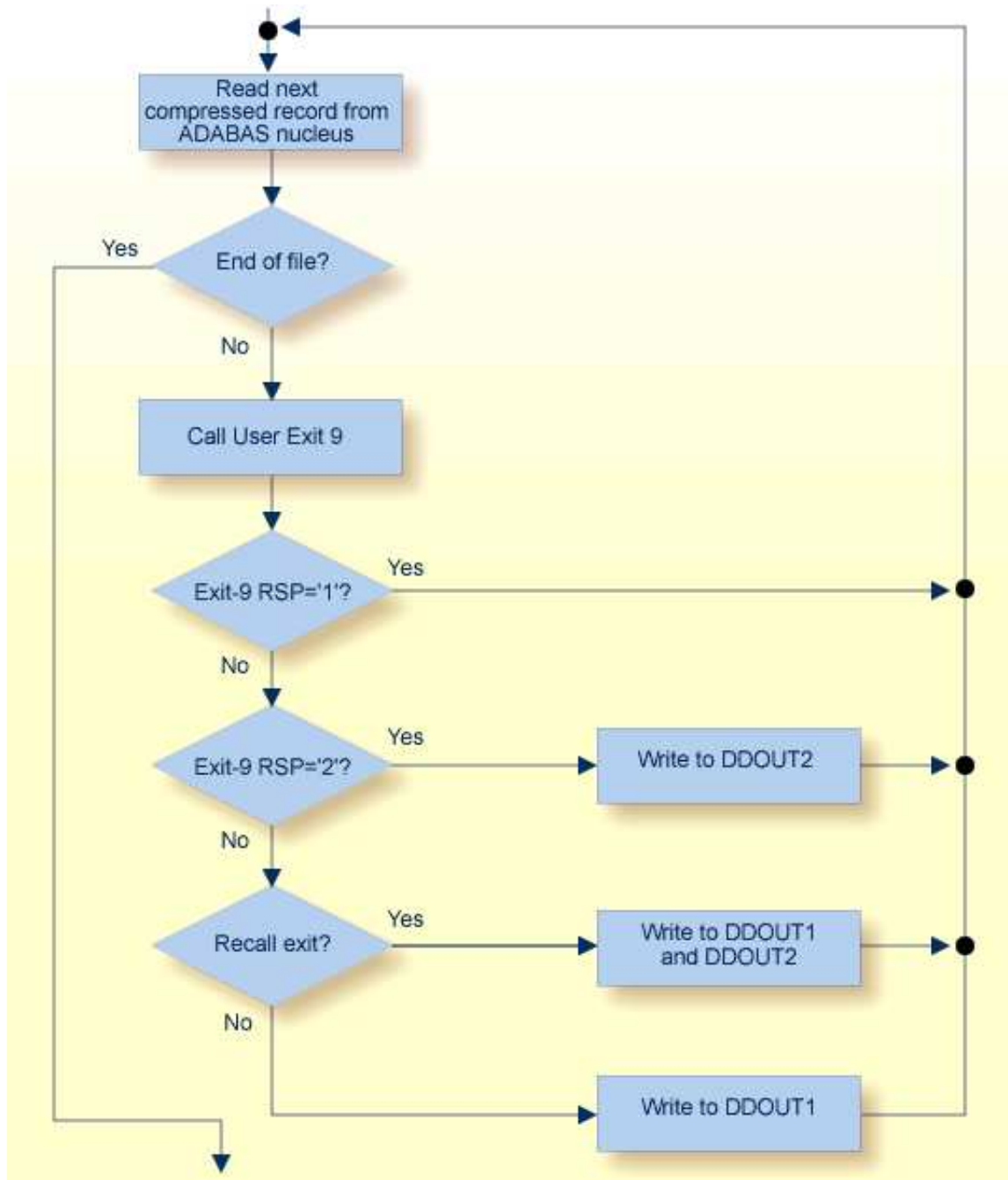
## ADAULD User Exit (9) Parameters

### Notes:

1. DDOUT1 & 2 must have the same block size, or an ADAULD error occurs.

The compressed record pointed to by the third address has the following structure:

```
AL2 (L1) total length (inclusive)
AL2 (L2) record length (inclusive)
AL4 (ISN)
XL (L2 - 8) '...compressed fields...'
XL (L1 - L2 - 2) '...DVT entries...'
```



### User Exit 9 Output Control Flow

The call to the user exit is made via a standard BASR 14,15 assembler instruction. All registers must be saved when control is received and restored immediately prior to returning control to ADAULD. The content of R15 is ignored.