

Adabas for Linux, UNIX and Windows

Installation on Windows

バージョン 6.6

2017 年 10 月

このマニュアルは Adabas for Linux, UNIX and Windows バージョン 6.6 およびそれ以降のすべてのリリースに適用されます。

このマニュアルに記載される仕様は変更される可能性があります。変更は以降のリリースノートまたは新しいマニュアルに記述されます。

Copyright © 1987-2017 Software AG, Darmstadt, Germany and/or Software AG USA, Inc., Reston, VA, United States of America, and/or their licensors.

The name Software AG, webMethods and all Software AG product names are either trademarks or registered trademarks of Software AG and/or Software AG USA, Inc. and/or their licensors. Other company and product names mentioned herein may be trademarks of their respective owners.

Software AG およびその子会社が所有する登録商標および特許の詳細については、<http://documentation.softwareag.com/legal/> を確認してください。

本ソフトウェアの一部にはサードパーティ製製品が含まれています。サードパーティの著作権表示およびライセンス規約については『License Texts, Copyright Notices and Disclaimers of Third-Party Products』を参照してください。このドキュメントは製品ドキュメントセットの一部であり、<http://documentation.softwareag.com/legal/>上、またはライセンス製品のルートインストールディレクトリ内にあります。

本ソフトウェアの利用は、Software AGのライセンス規約に則って行われるものとします。ライセンス規約は製品ドキュメントセット内、<http://documentation.softwareag.com/legal/>上、またはライセンス製品のルートインストールディレクトリ内にあります。

ドキュメント IDは: **ADAOS-INSTALL-66-20200619**

Table of Contents

Preface	v
1 About this Documentation	1
表記規則	2
オンライン情報	2
データ保護	3
2 System Requirements	5
Supported Operating System Platforms	6
Disk Space Requirements	6
Additional Software Requirements	6
3 Components Installed With Adabas	7
Adabas	8
Adabas Client	8
Adabas Client for Java (optional)	8
Adabas Administration Services (optional)	9
Adabas Manager (optional)	9
Infrastructure	9
Further Products	9
4 Important Information	11
Administrator Status	12
Installation Directory	12
Side-by-Side Installations	12
Adabas Data Directory	13
Canceling the Installation	14
Adabas Client Environment	14
5 Installing Adabas	15
Using the GUI to Install Adabas	16
6 Completing the Installation	21
Final Installation Steps	22
Configure the Adabas Environment	24
Configure the Adabas Client Environment	24
Information about the Installed Version	25
Reinstall Adabas SQL Gateway and Adabas Event Replicator	25
7 Uninstalling Adabas	27
Uninstalling Adabas	28
Uninstalling Adabas Client	28
8 Installing Fixes from Software AG Update Manager	29
Installation Steps	30
Verifying the Fix Version	33
Uninstalling a Fix	33
9 Upgrade Guide	37
Upgrading from a previous Adabas Version	38
Converting a Version 6.6 Database back to a previous Version	41
User Exits and Hyper Exits	41

Preface

This documentation describes the installation of Adabas 6.6 and the Adabas Client 6.6 on Windows.

Hereafter, the generic term Adabas will be used to describe both the Adabas and the Adabas Client.

Adabas is installed using the Software AG Installer, which you download from the Software AG Empower website at <https://empower.softwareag.com/>.

This documentation provides product-specific instructions for installing Adabas. It is intended for use with *Using the Software AG Installer*. That guide explains how to prepare your machine to use the Software AG Installer, and how to install and uninstall your products. The most up-to-date version of *Using the Software AG Installer* is always available at <https://empower.softwareag.com/>.

This documentation is organized under the following headings:

System Requirements	Supported operating system platforms and prerequisites.
Components Installed With Adabas	General information on Adabas, on Adabas Client, on Adabas Client for Java, on Adabas Administration Services, and on the required license files.
Important Information	Important information that you should be aware of before you start the installation.
Installing Adabas	How to install Adabas and Adabas Client with the Software AG Installer.
Completing the Installation	How to proceed after the installation.
Uninstalling Adabas	How to uninstall Adabas.
Installing Fixes from Software AG Update Manager	How to install and uninstall fixes for Adabas using the Software AG Update Manager (SUM).
Upgrade Guide	How to upgrade from a previous version or previous Service Pack.

For important last-minute information, see the readme file that is provided with Adabas. You can find it in the Adabas product documentation at <https://empower.softwareag.com/>.

1 About this Documentation

■ 表記規則	2
■ オンライン情報	2
■ データ保護	3

表記規則

規則	説明
太字	画面上の要素を表します。
モノスペースフォント	<code>folder.subfolder:service</code> という規則を使用して webMethods Integration Server 上のサービスの保存場所を表します。
大文字	キーボードのキーを表します。同時に押す必要があるキーは、プラス記号 (+) で結んで表記されます。
斜体	独自の状況または環境に固有の値を指定する必要がある変数を表します。本文で最初に出現する新しい用語を表します。
モノスペースフォント	入力する必要があるテキストまたはシステムから表示されるメッセージを表します。Program code.
{ }	選択肢のセットを表します。ここから1つ選択する必要があります。中カッコの内側にある情報のみを入力します。{} 記号は入力しません。
	構文行で相互排他的な2つの選択肢を区切ります。いずれかの選択肢を入力します。 記号は入力しません。
[]	1つ以上のオプションを表します。大カッコの内側にある情報のみを入力します。[] 記号は入力しません。
...	同じ種類の情報を複数回入力できることを示します。情報だけを入力してください。実際のコードに繰り返し記号 (...) を入力しないでください。

オンライン情報

Software AG マニュアルの Web サイト

マニュアルは、Software AG マニュアルの Web サイト (<http://documentation.softwareag.com>) で入手できます。このサイトでは Empower クレデンシャルが必要です。Empower クレデンシャルがない場合は、TECHcommunity Web サイトを使用する必要があります。

Software AG Empower 製品のサポート Web サイト

もしまだ Empower のアカウントをお持ちでないのなら、こちらへ empower@softwareag.com 電子メールにてあなたのお名前、会社名、会社の電子メールアドレスをお書きの上、アカウントを請求してください。

いったんアカウントをお持ちになれば、Empower <https://empower.softwareag.com/> の eService セクションにてサポートインシデントをオンラインで開くことができます。

製品情報は、Software AG Empower 製品のサポート Web サイト (<https://empower.software-ag.com>) で入手できます。

機能および拡張機能に関するリクエストの送信、製品の可用性に関する情報の取得、製品のダウンロードを実行するには、Products に移動します。

修正に関する情報を取得し、早期警告、技術論文、Knowledge Base の記事を読むには、**Knowledge Center** に移動します。

もしご質問があれば、こちらのhttps://empower.softwareag.com/public_directory.asp グローバルサポート連絡一覧の、あなたの国の電話番号を選んで、わたくし共へご連絡ください。

Software AG TECHcommunity

マニュアルおよびその他の技術情報は、Software AG TECHcommunity Web サイト (<http://techcommunity.softwareag.com>) で入手できます。以下の操作を実行できます。

- TECHcommunity クレデンシアルを持っている場合は、製品マニュアルにアクセスできます。TECHcommunity クレデンシアルがない場合は、登録し、関心事の領域として [マニュアル] を指定する必要があります。
- 記事、コードサンプル、デモ、チュートリアルにアクセスする。
- Software AG の専門家によって承認されたオンライン掲示板フォーラムを使用して、質問したり、ベストプラクティスを話し合ったり、他の顧客が Software AG のテクノロジーをどのように使用しているかを学んだりすることが可能です。
- オープンスタンダードや Web テクノロジーを取り扱う外部 Web サイトにリンクできます。

データ保護

Software AG製品は、EU一般データ保護規則(GDPR)を尊重した個人データの処理機能を提供します。該当する場合、適切な手順がそれぞれの管理ドキュメントに記載されています。

2 System Requirements

- Supported Operating System Platforms 6
- Disk Space Requirements 6
- Additional Software Requirements 6

Supported Operating System Platforms

Adabas supports a variety of operating environments. For information on the support platforms for this release of Adabas, read *Supported Platforms*, in the *Release Notes*.

Disk Space Requirements

You can only install Adabas on a local hard drive on a Windows system. You cannot install Adabas on a network-mapped drive or a SUBST drive.

Approximately 1 GB of hard-disk space is required for Adabas (including Adabas, Adabas Client and Software AG Installer packages).

Additional Software Requirements

For the installation of Adabas, the following additional software requirements apply:

Operating System Platforms	Requirement
All Windows versions	Install all of the recommended and important Microsoft Windows updates before you start the installation.
Windows 7 Windows Server 2008 Windows 2012 R2	Install the Microsoft C-Runtime Redistributable Package, that is provided in the Adabas Client INSTALL directory. The C-Runtime is required, when the following system message is received: The application has failed to start because its side-by-side configuration is incorrect. Please see the application event log or use the command-line sxstrace.exe tool for more detail. We also suggest that you install all of the recommended and important MW Windows updates after the installation. Important: On Windows server operating systems, you can switch on Disk Write Caching . This may increase the operating system performance, but it is strongly recommended to use it only for disks with a backup power supply, because otherwise it may result in a corrupted database.
Windows 8 Windows Server 2008 Windows 2012 R2	Install Microsoft update KB2919355; otherwise the installation of Adabas will fail.

3 Components Installed With Adabas

■ Adabas	8
■ Adabas Client	8
■ Adabas Client for Java (optional)	8
■ Adabas Administration Services (optional)	9
■ Adabas Manager (optional)	9
■ Infrastructure	9
■ Further Products	9

Adabas

Adabas covers all components of the Database Management System itself. Adabas requires the Adabas Client and the Infrastructure subcomponent Security Libraries.

Adabas can be installed side-by-side. There are some restrictions which are described in the section [Side-by-Side Installations](#).

To complete the Adabas installation, you must activate the license files as described in the section [Completing the Installation](#).

Adabas Client

Adabas Client covers all components needed to access Adabas from Client applications. It is used by several Software AG products such as Adabas and Entire Net-Work.

Adabas Client for Java (optional)

The Adabas Client for Java is an interface to Adabas for Java-based applications. The product consists of three individual components:

- The Java-based API itself;
- the Adabas Rest Interface, which can be used to access data from any programming language that supports HTTP request handling;
- the Adabas Data Designer, which is used to configure the Java API maps from Adabas FDT, Natural DDM or XSD definitions, as well as to browse the data in Adabas files.

If you have installed the Adabas Client for Java, see the description of the appropriate *Adabas Client for Java* documentation in Empower for further information. This documentation is available separately.

Adabas Administration Services (optional)

Adabas Administration Services is a communication component required by Adabas Manager. It must be installed and running if you want to monitor and administer Adabas databases with Adabas Manager.

See the appropriate *Adabas Manager* and *Adabas Administration Services* documentation in Empower for further information.

Adabas Manager (optional)

Adabas Manager is used to interactively monitor and administer Adabas databases. Adabas Manager requires the Adabas Communication Client, Adabas Administration Services and the Adabas Directory Server. See the appropriate *Adabas Manager* documentation in Empower for further information.

Infrastructure

Adabas, or the components installed with Adabas, require a number of infrastructure components that are automatically installed with the Software AG Installer. For instance, the Infrastructure Security Libraries are required by Adabas. These libraries contain the functionality required to implement the Adabas Authentication feature.

Further Products

Depending on your credentials, you may see (and can select or deselect) further entries in the **Adabas Products** node. Please refer to the separate documentation of the individual product(s) for a detailed description of the required installation steps.

4 Important Information

- Administrator Status 12
- Installation Directory 12
- Side-by-Side Installations 12
- Adabas Data Directory 13
- Canceling the Installation 14
- Adabas Client Environment 14

Administrator Status

The account under which the installation is performed must have administrator rights.

Installation Directory

During the installation, you are asked to specify an installation directory in which to install your Software AG products. By default, the name of the main installation directory is `C:\SoftwareAG`.

The directory name should not contain embedded spaces. For further information, see *Using the Software AG Installer*.

The default Start Menu Group is **Software AG**.

Side-by-Side Installations

You can install the same Adabas version more than once on the same machine. And you can also install several different versions of Adabas on the same machine. Each version, however, must be installed in a separate directory. You cannot overwrite an existing version, you can only uninstall it.

Choose for instance `C:\SoftwareAG\Suite1` for the first installation and `C:\SoftwareAG\Suite2` for the second one. Accordingly, the related Start Menu Groups should be named Software AG and Software AG2.

If several Adabas versions are installed on the same machine, it is recommended to install any other Software AG products using Adabas into the directory where the specific Adabas version had been installed.

Adabas requires that every Adabas installation is licensed separately. The Adabas license has to be activated for each installation directory. For further information see [Final Installation Steps](#).

Activate/Deactivate an Adabas Installation

In a Windows environment in which multiple Adabas installations of the same version exist, only one installation can be active. In order to switch to another installation, the previous installation must first be deactivated and the current installation activated.

Activating an Adabas Server installation registers and starts the Adabas services for the current installation.

Deactivating an Adabas Server installation deregisters and stops the Adabas services for the previous installation.

➤ To activate an Adabas installation

- Activate the current installation via the **Start** menu under: **All Programs**> <installation_menu_group>> **Administration**> **Adabas 6.6**> **Activate Installation**.

➤ To deactivate an Adabas installation

- Deactivate the previous installation via the **Start** menu under: **All Programs**> <installation_menu_group>> **Administration**> **Adabas 6.6**> **Deactivate Installation**.

Adabas Data Directory

Adabas stores its configuration data and information about the available databases in a directory identified by the environment variable ADADATADIR. In particular, if you use Adabas Extended Operations or the Adabas Manager, the descriptions of all databases to be accessed must be stored in ADADATADIR.

The database IDs used must be unique on the same machine. Moreover, the file *ADABAS.INI* located in *%ADADATADIR%\etc* contains setup data that should be unique on your machine as well.

ADADATADIR is by default the Program Data directory: *%PROGRAMDATA%\Software AG\Adabas* .

You can change the value of ADADATADIR for the current installation by running *change_adadatadir.bat* from an appropriate DOS command prompt. For further information see [ADADATADIR](#) in section *Upgrade Guide* of this documentation.

Canceling the Installation

As you move through the wizard, the installer stores some of the files it requires in a temporary directory. If you cancel the installer and later restart it on the same machine, the installer will use the stored files rather than downloading them from the installer server again, to improve performance. After a successful installation, the installer deletes the stored files.

If you cancel the installation before it has finished and if you want to remove already installed files, you have to do this manually. For further information, see [Uninstalling Adabas](#).

Adabas Client Environment

The Adabas Client environment will be automatically set as a global environment, unless another environment is already set as a global environment and the version of this environment is higher than or equal to the version to be installed.

5 Installing Adbas

- Using the GUI to Install Adbas 16

Using the GUI to Install Adabas

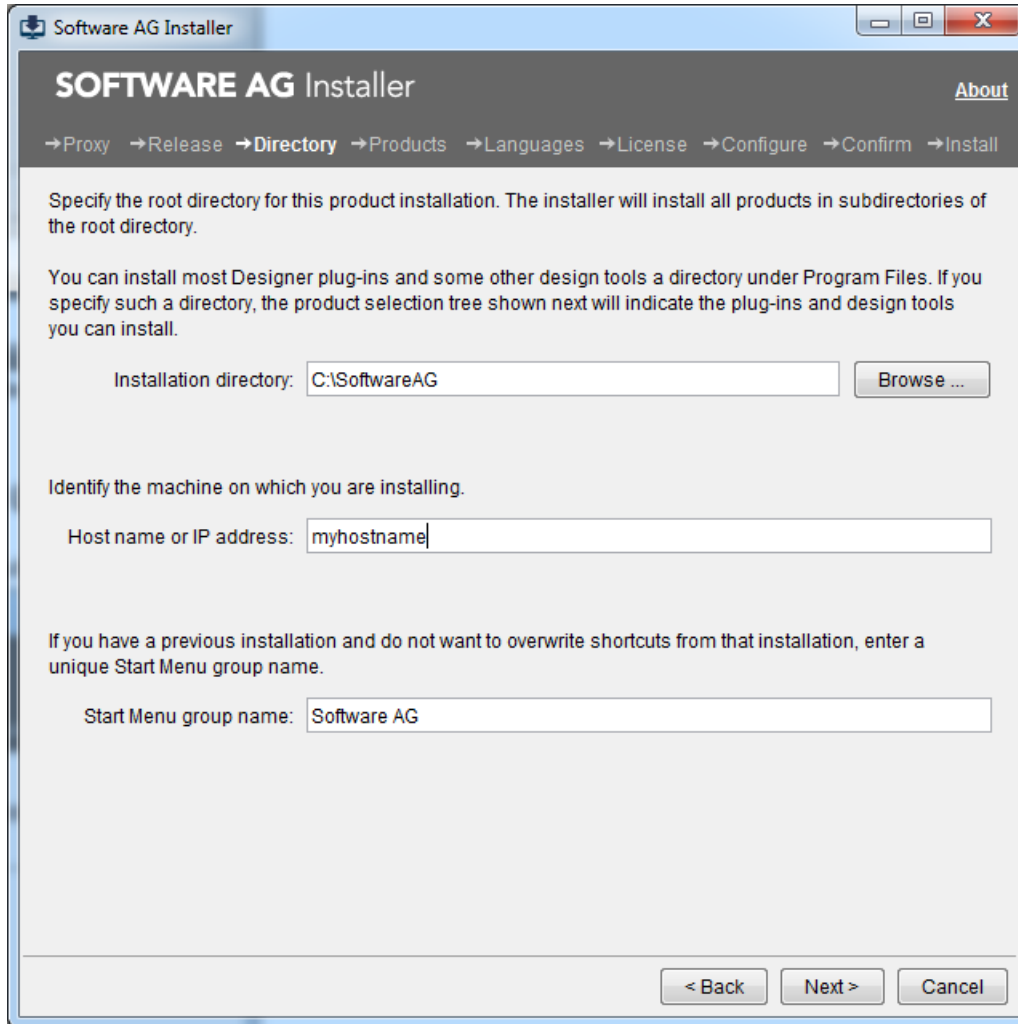
This installation documentation provides just a brief description on how to install Adabas directly on the target machine using the Software AG Installer GUI. For detailed information on the Software AG Installer, see *Using the Software AG Installer*.

> To install Adabas

- 1 Start the Software AG Installer GUI as described in *Using the Software AG Installer*.
- 2 When the first page of the Software AG Installer GUI (the so-called Welcome panel) is shown, press the **Next** button repeatedly (and specify all required information on the shown panels as described in *Using the Software AG Installer*) until the panel containing the installation directory appears.



Note: The section *Side-by-Side Installations* provides details on the restrictions, which apply to the installation directory when multiple instances of the Adabas are to be installed side-by-side.



- 3 Specify the installation directory, host name or IP address (optional) and the Start Menu group name.



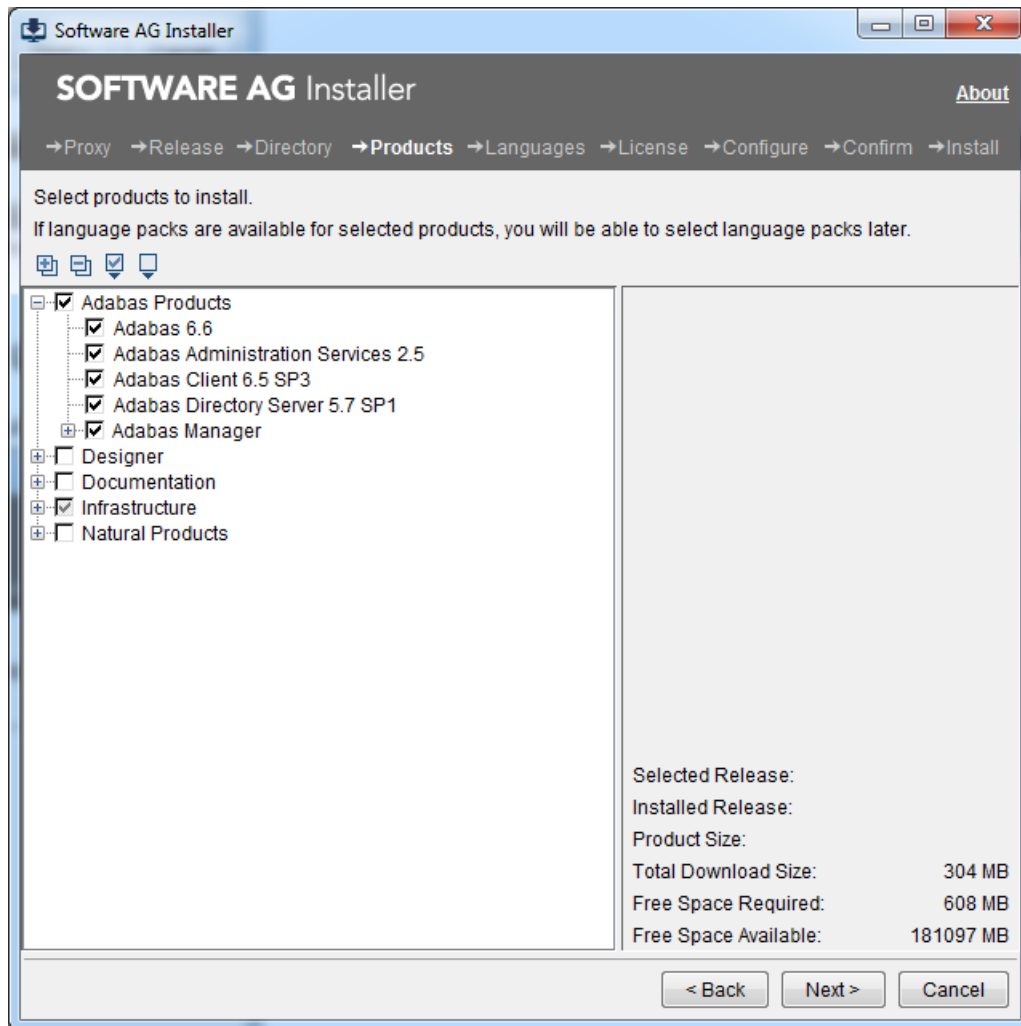
Note: If you opt for installing several versions of Adabas in parallel directories, it is strongly recommended not to use the proposed installation directory `C:\SoftwareAG` but a subdirectory, for example `C:\SoftwareAG\ada66` and to change the Start Menu group name, for example to **Software AG Adabas 6.6** to install the release version of Adabas 6.6. The installation wizard does not allow you to install two Adabas versions into the same directory.

- 4 Press the **Next** button.



Note: The panel shown below is an example of a possible product selection.

The panel containing the product selection tree appears. This tree lists the products for which you have valid credentials and which can be installed on the operating system of the machine on which you are installing.



Note: Products or product versions which are already installed in the selected installation directory are shown as disabled.

- 5 If you want to install Adabas and pre-selected product components, select the **Adabas Products** node.

Notes:

1. You may deselect the Adabas Administration Services component if the Adabas Manager is not used to administer Adabas.
2. During the Adabas Administration Services installation, you will be asked for the Adabas Directory Server URL. If your databases are to be remotely administered via Adabas

Manager, the URL should point to the same Adabas Directory Server instance as your Adabas Manager installation.

Or:

If you want to customize the list of selected product components, expand the **Adabas Products** node, deselect Adabas Products and select the product components that you want to install.

If you select a single Adabas product component, the installer automatically selects any additional components which are also required (for further information see [Components Installed with Adabas](#)).

- 6 If you want to install Adabas Client, select **Adabas Client** in the product selection tree. The Adabas Client is always installed together with Adabas, but can also be installed separately.
- 7 Press the **Next** button.
- 8 Read the license agreement, select the check box to agree to the terms of the license agreement, and press the **Next** button.
- 9 On the last panel, review the list of products and items you have selected for installation. If the list is correct, press the **Next** button to start the installation process.

When the Software AG Installer has completed the first-time installation, additional configuration steps are required. See [Completing the Installation](#) for further details.

6 Completing the Installation

- Final Installation Steps 22
- Configure the Adabas Environment 24
- Configure the Adabas Client Environment 24
- Information about the Installed Version 25
- Reinstall Adabas SQL Gateway and Adabas Event Replicator 25

Final Installation Steps

This section describes the steps, which are to be completed after the installation of Adabas 6.6 on Windows.

➤ **To complete the installation of Adabas 6.6 on Windows.**

- 1 Activate the Adabas license.
 1. Copy the license key to a temporary location on your Windows machine.
 2. Start a Command Prompt to activate the license via the *Start* menu under: **All Programs** > *Start Menu group name* > **Administration** > **Adabas 6.6** > **Activate License**.
 3. In the Command Prompt execute the `adalic` script to activate the license file. Enter:

```
adalic activate license_file
```

Where *license_file* represents the fully qualified path to your license file.

- 2 In the case of a first-time installation, continue as described under the step "Verify the Installation" below.
- 3 Side-by-Side Installation

If you already have Adabas Version 6.6 installed and activated:

1. Terminate your active databases. The administration command `adashow -a` lists the databases that must be terminated.
2. Deactivate the previous Adabas installation via the *Start* menu under: **All Programs** > *Start Menu group name* > **Administration** > **Adabas 6.6** > **Deactivate Installation**.
3. Activate the current installation via the *Start* menu under: **All Programs** > *Start Menu group name 2* > **Administration** > **Adabas 6.6** > **Activate Installation**.

Continue as described under the step "Verify the Installation" below.

- 4 Verify the Installation.



Note: This step is optional.

To verify your installation you may choose to:

- Create the Demo Database
- Start the database
- Generate a database report

- Terminate the database

To achieve this, execute the following steps:

1. Create the Demo Database

- Via the *Start* menu under: **All Programs** > *Start Menu group name* > **Administration** > **Adabas 6.6** > **Create Demo Database**.

- Execute the script to create the Demo Database.

2. Start a Command Prompt to execute Adabas utilities via the *Start* menu under: **All Programs** > *Start Menu group name* > **Administration** > **Adabas 6.6** > **Start Command Prompt**.

3. Start the database from the command prompt issuing the command:

```
adastart dbid
```

Where *dbid* represents the Database ID of your database.

For further details on *adastart*, refer to the section *Start Database: adastart* in the *Extended Operation* documentation

4. Generate a database report from the command prompt issuing the command:

```
adarep dbid=dbid contents
```

Where *dbid* represents the Database ID of your database.

For further details on *adarep*, refer to the section *ADAREP* in the *Utilities* documentation.

5. Determine whether the database is active by executing the following commands from the command prompt:

```
adashow -a
```

and

```
getdbinfo dbid
```

6. Terminate the database from the command prompt issuing the command:

```
adastop dbid
```

Where *dbid* represents the Database ID of your database.

For further details on *adastop*, refer to the section *Stop Database: adastop* in the *Extended Operation* documentation

Configure the Adabas Environment

It is not possible to set Global Environment Settings for Adabas.

The Adabas utilities require the Adabas environment variables to be set. The required environment variables are automatically set when the utility programs are executed from the All Programs > *Start Menu group name* > Administration > Adabas 6.6 > Start command prompt.

Use the script `adaenv.bat` located in the directory `<install_dir>\Adabas\INSTALL\` to set the environment variables, when Adabas utility programs are to be executed outside the command prompt.

Configure the Adabas Client Environment

The Adabas Client environment is only required by applications and services, which access an Adabas database or utilize the database communication facilities.

In a Windows environment where multiple Adabas Client installations exist, only one Global Adabas Client Environment installation can be active.

By default, the highest installed version of Adabas Client is set as the Global Environment.

If you want to switch back to a lower version, you must first unset the previous installation and then set the current installation using the script `aclenvvar`.

To set the Adabas installation use the *Start* menu. Go to: **All Programs** > *Start Menu group name* > **Administration** > **Adabas Client 6.6** > **Configure Global Environment**. In the Command Prompt, execute the script `aclenvvar` with one of the following options:

aclenvvar unset

Unsets the previous global environment.

aclenvvar set

Sets the current global environment.

aclenvvar show

Displays information about the current local and global environment setting.

Information about the Installed Version

Adabas

Information about the version number can be obtained using the following methods:

- Open a command prompt from the **Start** menu: **All Programs**> *Start Menu group name* > **Administration**> **Adabas Server 6.6**> **Start Command Prompt**. Then execute

```
sagver %ADAPROGDIR%\adanuc.exe
```

- Open a command prompt from the **Start** menu: **All Programs**> *Start Menu group name* > **Administration**> **Adabas Server 6.6**> **Start Command Prompt**. Then execute

```
type %ADAPROGDIR%\version.txt
```

Adabas Client

Information about the version number can be obtained using the following method:

- Open a command prompt from the **Start** menu: **All Programs**> *Start Menu group name* > **Administration**> **Adabas Client 6.6**> **Configure Global Environment**. Then execute

```
sagver %ACL65DIR%\ada1nkx.dll
```

Reinstall Adabas SQL Gateway and Adabas Event Replicator

If you are also using the Adabas SQL Gateway or the Adabas Event Replicator, you must reinstall these products. For further information, refer to the related product documentation.

7 Uninstalling Adabas

- Uninstalling Adabas 28
- Uninstalling Adabas Client 28

You uninstall Adabas using the Software AG Uninstaller. For detailed information on how to use the uninstaller, see the *Using the Software AG Installer* guide.

Uninstalling Adabas

To uninstall Adabas, proceed as follows:

1. Ensure that all databases and processes, which use the directory that is to be removed, have been terminated.
2. Deactivate the Adabas installation that is to be removed. Use the Start menu: **All Programs** > *Start Menu group name* > **Administration** > **Adabas 6.6** > **Deactivate Installation**
3. Uninstall Adabas using the standard uninstall functionality of Windows. The Control Panel offers the following entry: **Software AG Products:** <*installation-directory*>. When you choose to uninstall this entry, the Software AG Uninstaller is invoked.

All files created or modified by the user are not removed.

Uninstalling Adabas Client

If the global Adabas Client environment has been set, or if applications still have Adabas DLLs in use, the Uninstall will be rejected.

Ensure that all applications using the Adabas Client have been terminated and unset the global Adabas Client environment. Use the Start Menu: **All Programs** > *Start Menu group name* > **Administration** > **Adabas Client 6.6** > **Configure Global Environment** and execute `aclenvvar unset`.

In silent mode, an unset of the global Adabas Client environment will be done automatically (for further information about the silent mode refer to the Software AG Uninstaller documentation).



Note: If you unset the global Adabas Client 6.6 environment, and if you want to go back to Adabas version 6.3, you need to reinstall the Adabas Client version shipped with Adabas 6.3.

8

Installing Fixes from Software AG Update Manager

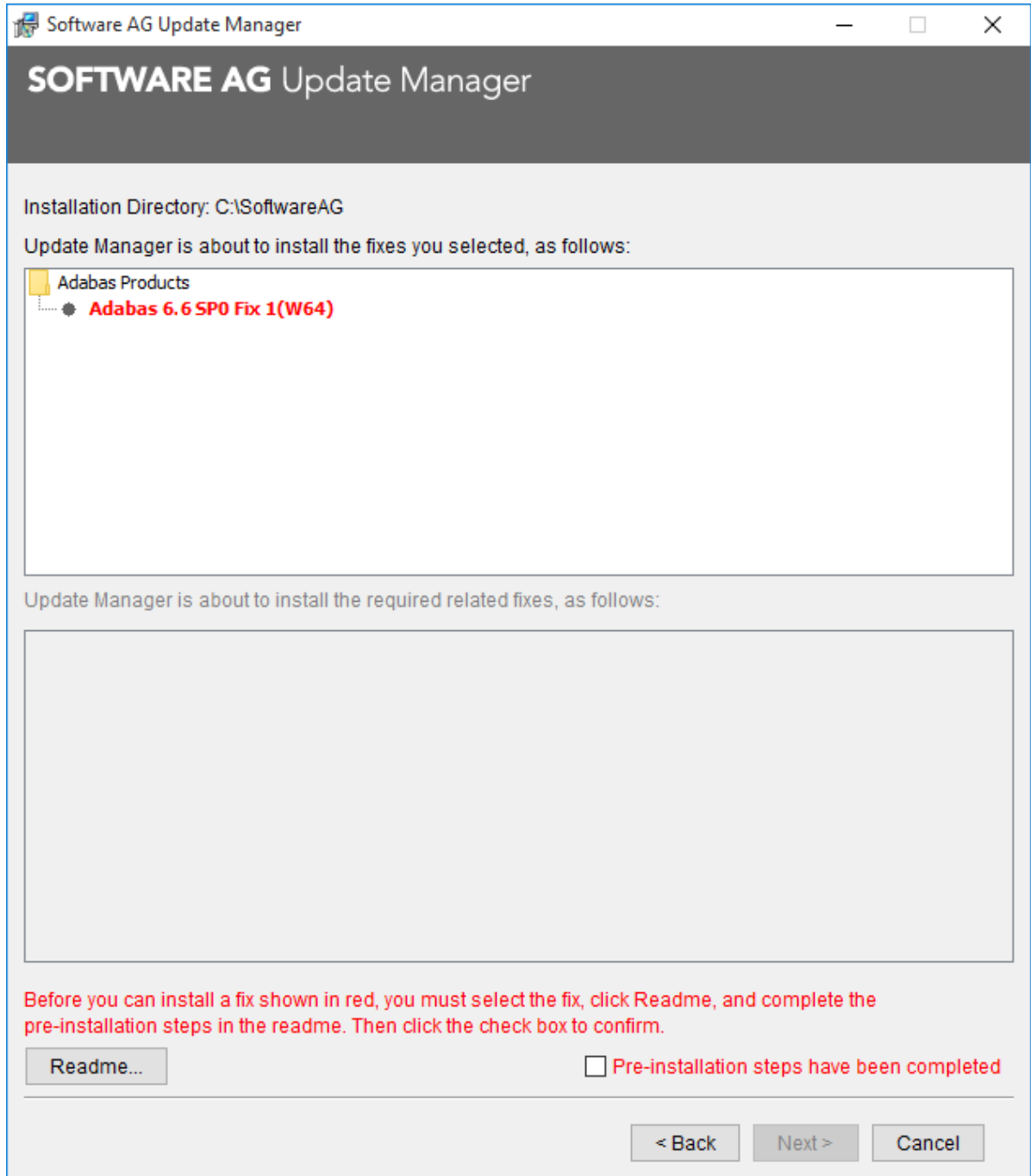
- Installation Steps 30
- Verifying the Fix Version 33
- Uninstalling a Fix 33

With the Software AG Update Manager (SUM) you can download and install fixes for Adabas.

Installation Steps

➤ To install a fix using the Software AG Update Manager

- 1 Make sure that all Adabas processes and all application accessing Adabas are terminated.
- 2 Start the Software AG Update Manager and choose **Install fixes from Software AG Empower**.
- 3 Specify the installation directory and supply your Empower credentials, and choose **Next**.
- 4 Specify the fix you want to install and choose **Next**.
- 5 Complete the pre-installation steps that are shown in the readme file, and click on the **Pre-installation steps have been completed** check box to confirm that you have performed them.

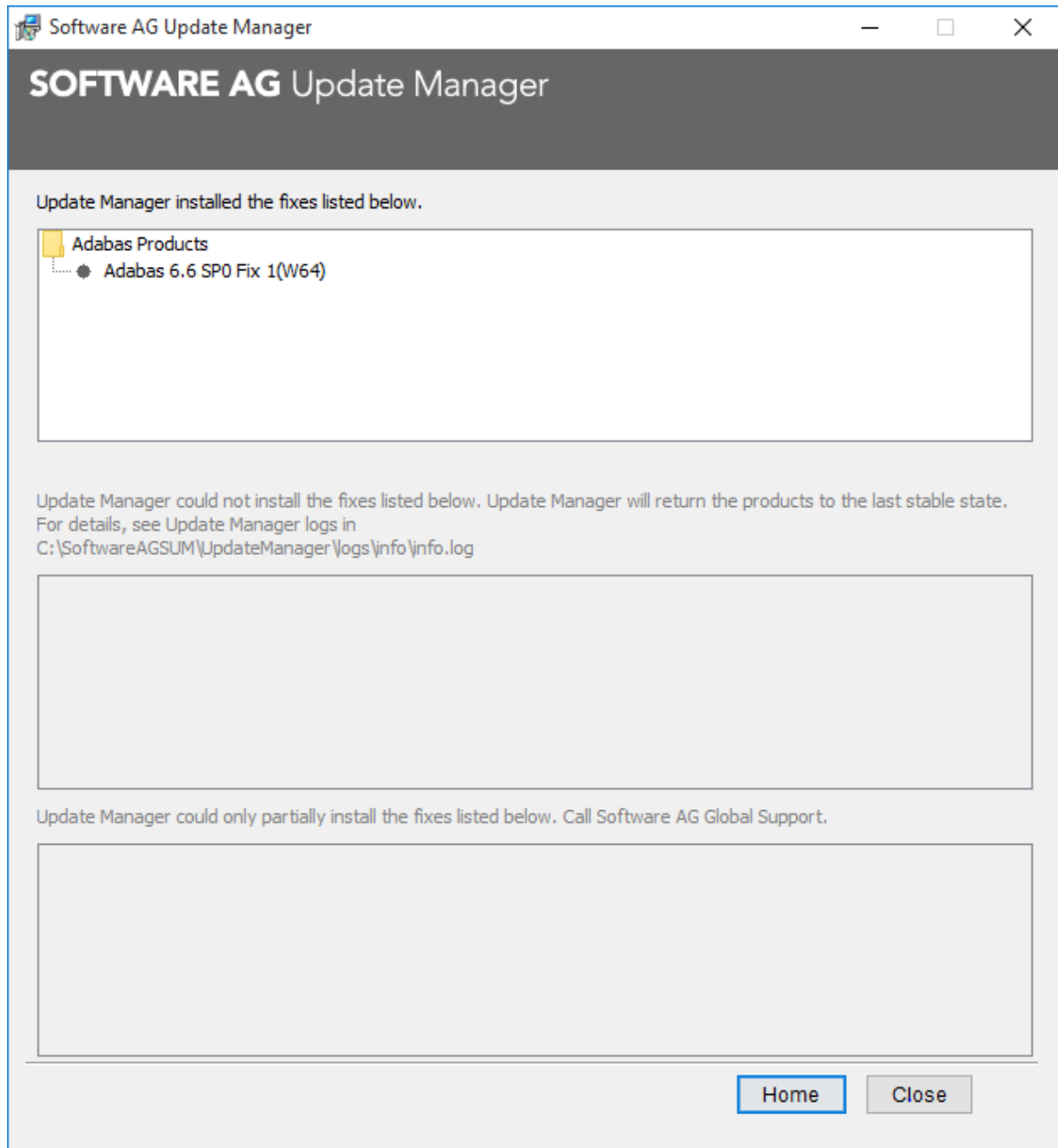


Choose **Next** to start the installation of the fix.



Note: **Next** is only enabled after you have confirmed performing the pre-installation steps.

- 6 Once the fix has been successfully installed, details of the installation are displayed in the Software AG Update Manager. Choose **Close** to terminate the Update Manager, or choose **Home** to return to the main screen.



Verifying the Fix Version

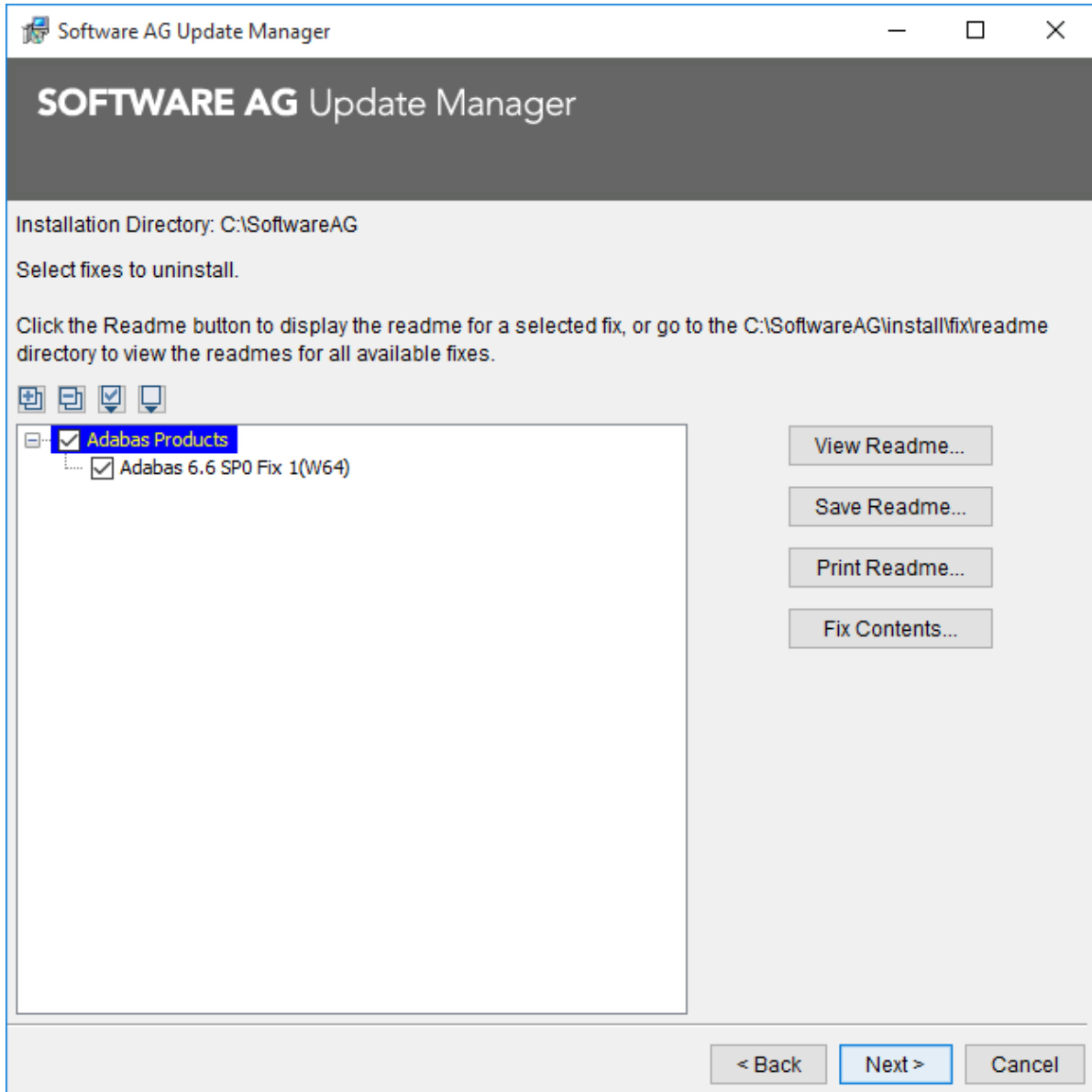
You can verify the version of the installed fix by starting a utility (for example, ADAREP) from the command line; the version number of the fix is displayed in the first line of the output.

Uninstalling a Fix

You can use the Software AG Update Manager to uninstall a fix and thereby go back to the previous fix version.

➤ To uninstall a fix using the Software AG Update Manager

- 1 Make sure that all Adabas processes and all applications accessing Adabas are terminated.
- 2 Start the Software AG Update Manager and choose **Uninstall fixes** , then choose **Next**.
- 3 Specify the fix you want to uninstall and choose **Next**.



- 4 Complete the pre-uninstallation steps that are shown in the readme file, and click on the **Pre-uninstallation steps have been completed** check box to confirm that you have performed them.

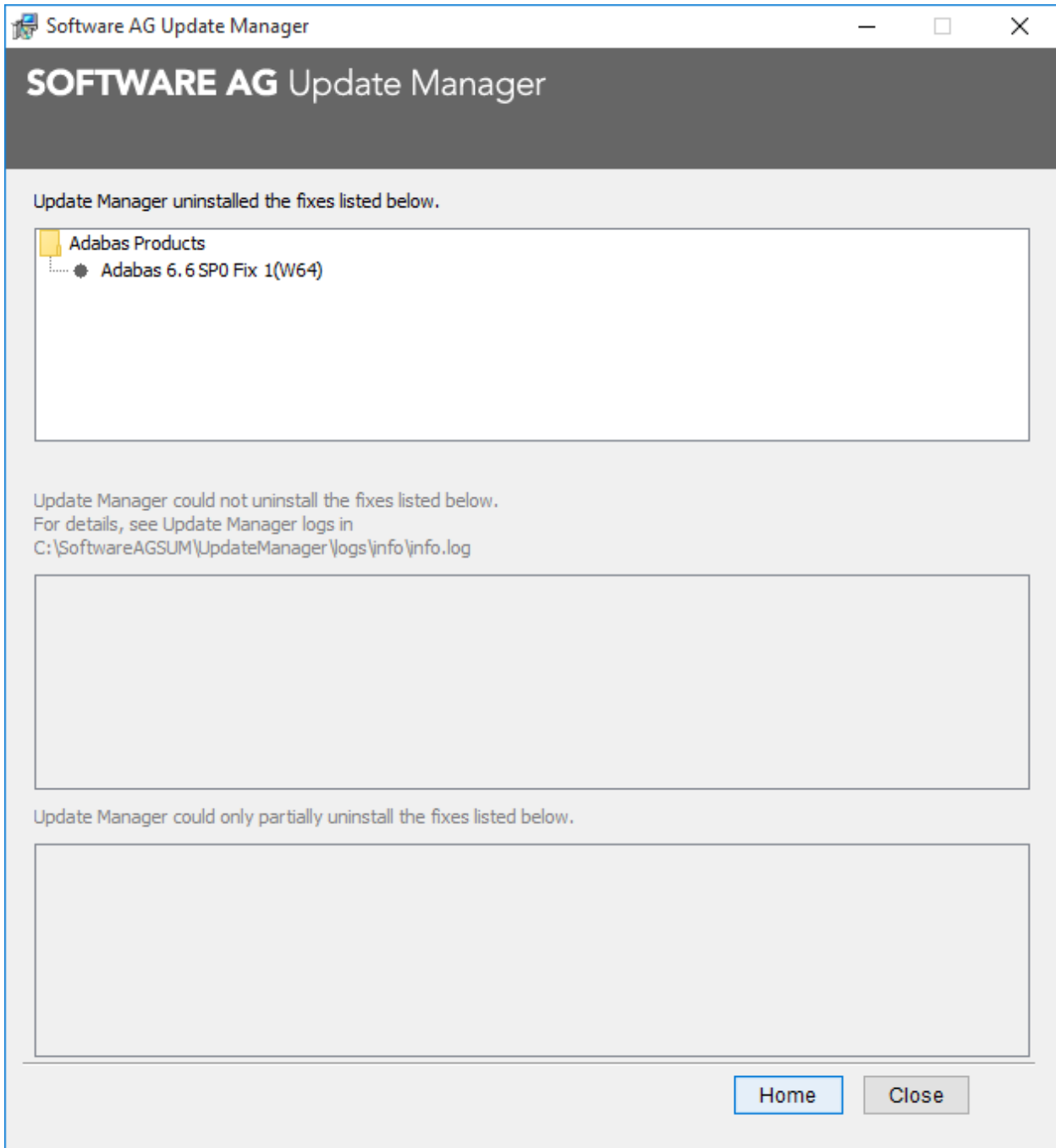


Choose **Next** to start uninstalling the fix.



Note: **Next** is only enabled after you have confirmed performing the pre-uninstallation steps.

Once the fix has been successfully uninstalled, details of the uninstallation are displayed in the Software AG Update Manager. Choose **Close** to terminate the Update Manager, or choose **Home** to return to the main screen.



9 Upgrade Guide

- Upgrading from a previous Adabas Version 38
- Converting a Version 6.6 Database back to a previous Version 41
- User Exits and Hyper Exits 41

Upgrading from a previous Adabas Version

This section is intended to assist a user upgrading to Adabas 6.6 from an older version of Adabas.

- [Installation](#)
- [Adabas License](#)
- [Activating the Installation](#)
- [ADADATADIR](#)
- [Converting a Database from a previous Version to Version 6.6](#)
- [Autostart](#)

Installation

On Windows platforms, the default installation directory is *C:\SoftwareAG* and the default Start Menu Group name is *Software AG*.

If the same Adabas version is to be installed more than once, or if several different versions are to be installed on the same machine, each version or instance must be installed in a separate directory (under Windows also a separate Start Menu Group).

It will not possible to install more than one Adabas version into the same directory. You cannot overwrite an existing version, you can only uninstall it.

For further information see the section [Important Information](#) and follow the instructions in the section [Installing Adabas](#).

Adabas License

Adabas 6.6 requires that every Adabas installation is licensed separately.

Follow the instructions in the section [Completing the Installation](#) to complete the installation and to activate the license.

Activating the Installation

If you have Adabas Version 6.3 or earlier installed:

1. Terminate your active databases.
2. Unset the global Adabas environment.
3. Activate the current installation via the **Start** menu under: **All Programs** > *Start Menu group name* > **Administration** > **Adabas 6.6** > **Activate Installation**.

Follow the instructions in the section [Completing the Installation](#) to verify the installation.

ADADATADIR

The environment variable ADADATADIR identifies the directory in which the databases are located; e.g. the dbnnn directories, where nnn is the three digit database number.

By default, ADADATADIR is the Program Data directory: *%PROGRAMDATA%\Software AG\Adabas*.

If your databases are allocated in the default location *%PROGRAMDATA%\Software AG\Adabas*, no additional configuration is required.

You can change the value of ADADATADIR for the current installation by running *change_adadatadir.bat* from an appropriate command prompt.

➤ To run *change_adadatadir.bat*

1 Shut down all processes that are using the current installation.

2 Deactivate your installation with

Start Menu > All Programs > Start Menu group name > Administration > Adabas 6.6 > Deactivate Installation

3 Open a command prompt with

Start Menu > All Programs > Start Menu group name > Administration > Adabas 6.6 > Start Command Prompt

and then run *change_adadatadir.bat*.

4 Close all open command prompts.

5 Reactivate your installation to pick up the new value for ADADATADIR with

Start Menu > All Programs > Start Menu group name > Administration > Adabas 6.6 > Activate Installation



Note: Although ADADATADIR can be different for each installation of Adabas, the database numbers must be unique in your Windows environment.

Converting a Database from a previous Version to Version 6.6


If you want to upgrade a database from Version 6.1, 6.2, 6.3, 6.4 to or 6.5 to Version 6.6, there are two options available to you:

1. Convert the data using either the utility ADABCK or ADAORD. This option requires that you:
 - a. Create a new Version 6.6 database;
 - b. Unload the old database using ADABCK DUMP or ADAORD EXPORT (old version);
 - c. Load the new database using ADABCK RESTORE or ADAORD IMPORT (version 6.6).
2. Convert the data using the utility ADACVT (for further information see *Utilities Manual*). This utility converts an existing database in place.

If you want to upgrade a database from Version 5, you must first upgrade the database to Version 6.1, 6.2, 6.3, 6.4 or 6.5 (as described in the Release Notes of the version-specific documentation) and then proceed as described above.

The utilities ADACVT, ADABCK and ADAORD make the following modifications:

- The structure level of the General Control Block (GCB) is increased;
- The structure of the FDT is changed, when a Version 6.1 database is converted;
- Databases are included in the ADABAS.INI file, when a DBxxx.INI file exists;

 **Important:** Software AG strongly recommends that you perform the following actions: before converting a database, use ADABCK to dump the database, then after a database has been converted, use the ADAVFY FIELD and INDEX functions to verify the consistency of the database.

Converting a Database from a Version prior to Version 6.1

If you want to convert a database from Version 5, you must first upgrade the database to Version 6.1, 6.2, 6.3 or 6.4, as described in the Release Notes of the version-specific documentation, and then proceed as described above.

Autostart

If your database is to be started automatically when the Adabas Database Service starts, the AUTOSTART value needs to be adapted to the new Adabas version. Execute

```
ADASRV Set <dbid> AUTOSTART=Vnnnnn ←
```

where *nnnnn* is the Adabas version (1st digit = major version, 2nd digit = minor version, 3rd digit = service pack, 4th - 5th digit = fix number).

Example

```
AUTOSTART=V66000 ←
```

This means major version = 6, minor version = 6, service pack = 0, fix = 00.

For further information see *Adabas Services on Windows*.

Converting a Version 6.6 Database back to a previous Version

- [Converting a Version 6.6 Database to Version 6.3, 6.4 or 6.5](#)

Converting a Version 6.6 Database to Version 6.3, 6.4 or 6.5

You have got two options to convert a Version 6.6 database back to a previous version, provided new features introduced with Adabas Version 6.6 were not used.

Use the utility ADACVT to convert a database to a previous version. The database will be converted in place.

Alternatively you can convert a database using ADABCK. To achieve this, make a backup with ADABCK Version 6.6 and restore the database with the appropriate version of ADABCK.

Care should be taken if collation descriptors were used. As collation descriptors created with ICU version 5.4 are not processed correctly with Adabas Version 6.3 and Adabas Version 6.4, you must reinvert those descriptors.

User Exits and Hyper Exits

When you start the Adabas nucleus, and the runtime requirements of a user exit or hyperexit differ to those of the nucleus, a message similar to the following will be received:

MSVCRxxx.dll is missing or cannot be found.

Microsoft recommends that the manifest file be embedded in the C/C++ application in order to ensure that the correct runtime is used, and thus avoid such issues.

Please refer to the following Microsoft documentation topics for further details about how to do this:

- [How to: Embed a Manifest Inside a C/C++ Application](#)
- [Isolated Applications and Side-by-side Assemblies](#)