

# Installing on Windows

This section describes the installation procedure for Natural Business Services on Windows.

The setup.exe file copies the Natural Business Services configuration and customizable files to the following folder:

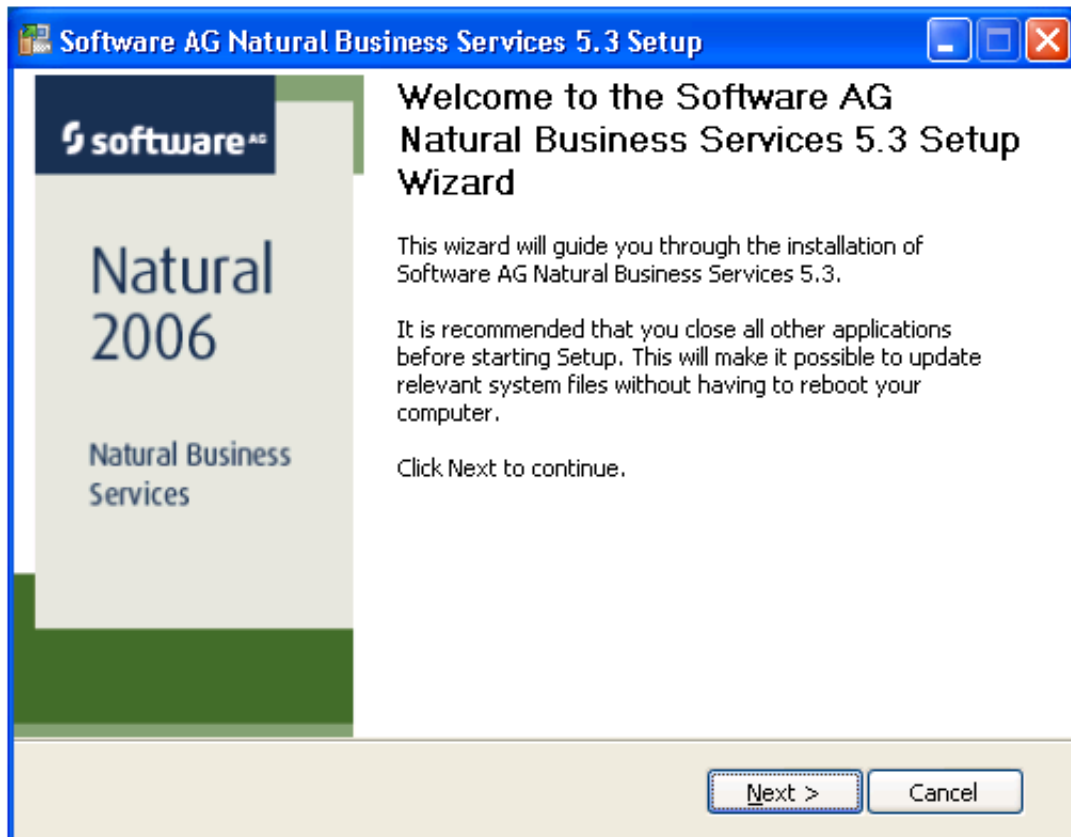
```
%ALLUSERPROFILE%/Application Data/Software AG/Natural Business Services/
```

In addition, if the installation script detects versions installed before 5.3.1.0, it will prompt you to copy all \*.config and \*.xml files to this folder.

## ▶ To install Natural Business Services on Windows:

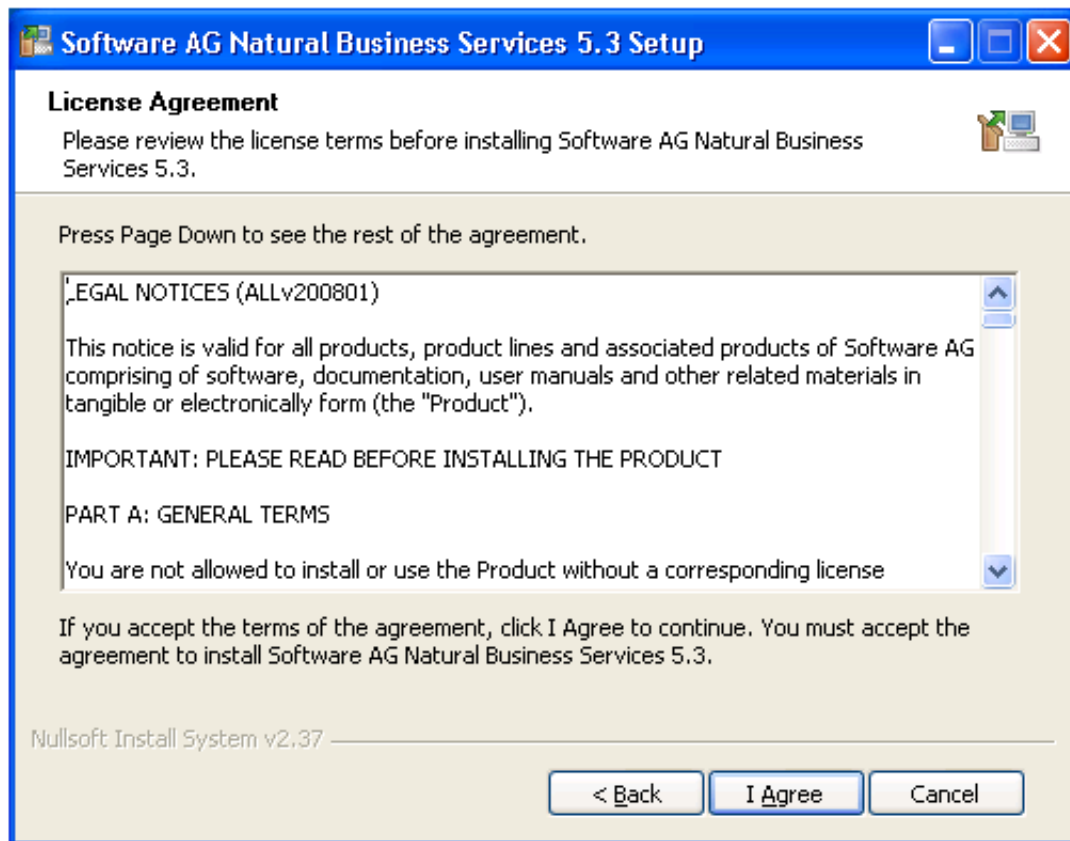
1. Insert the CD and start the installation program.

The Welcome panel is displayed. For example:



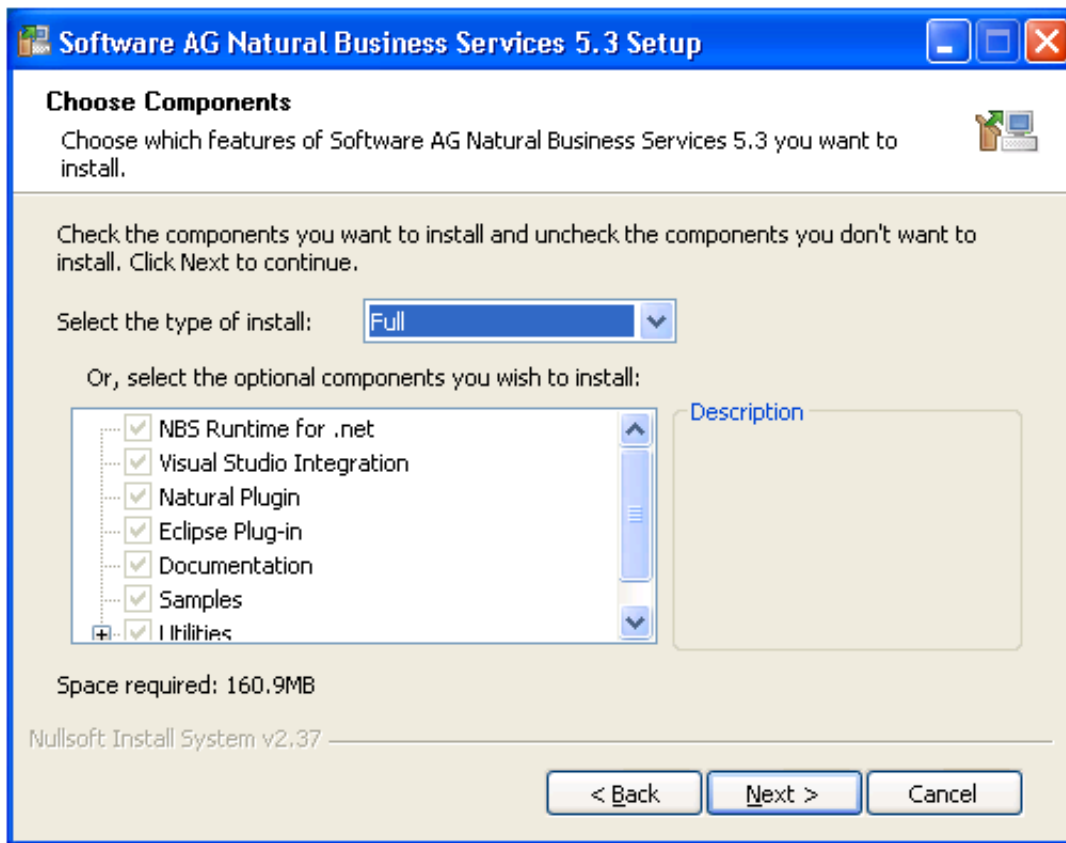
2. Select **Next**.

The **License Agreement** panel is displayed. For example:



3. Read the legal notices and select **I Agree** to accept the terms of the license agreement.

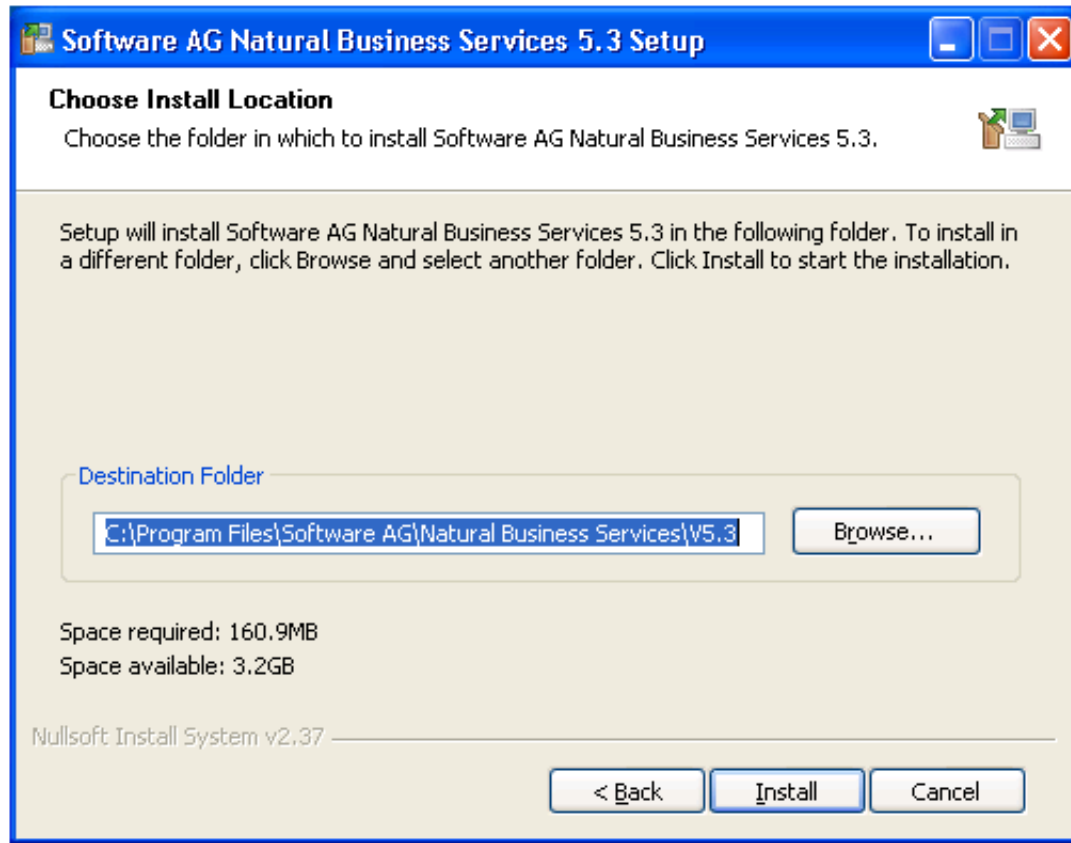
The **Choose Components** panel is displayed. For example:



This panel displays the components that will be installed by default. To view a description of the feature, select the feature on the left and the description is displayed in **Description**.

4. Select which type of installation to perform.
5. Select **Next**.

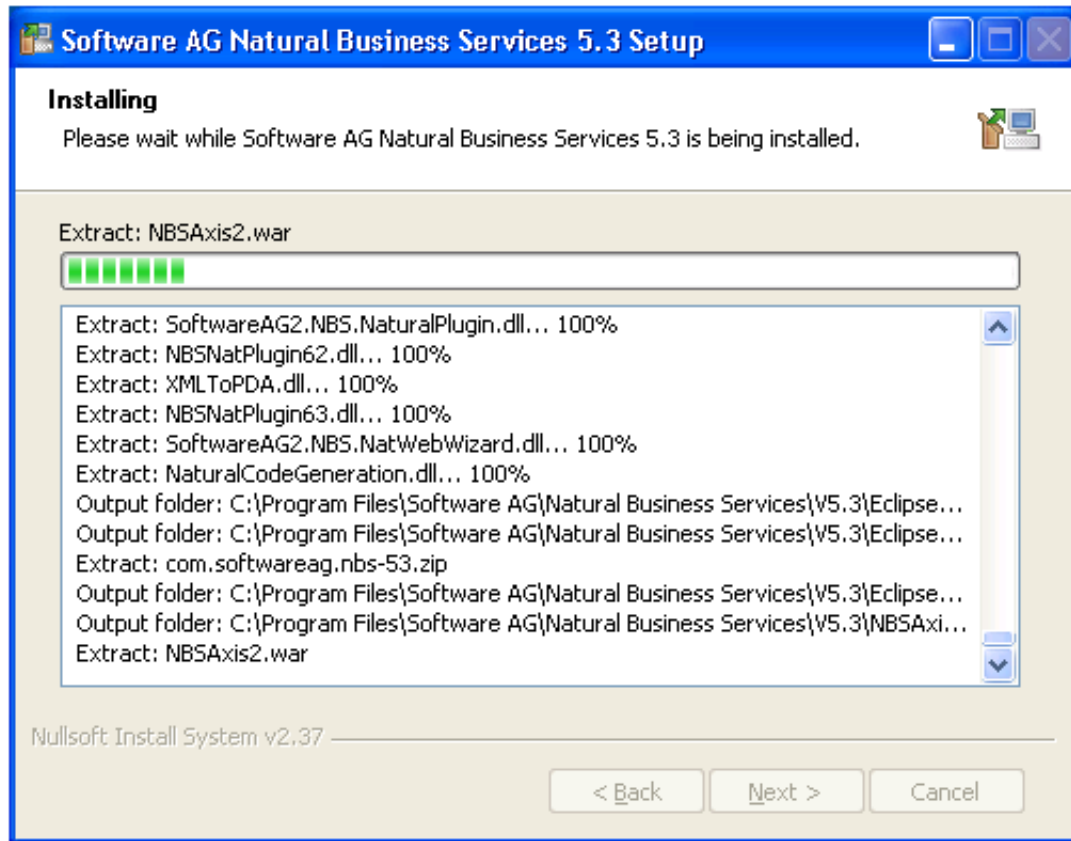
The **Choose Install Location** panel is displayed. For example:



The default location of the folder for Natural Business Services is shown. If this is not the correct folder, select **Browse** to choose a different location.

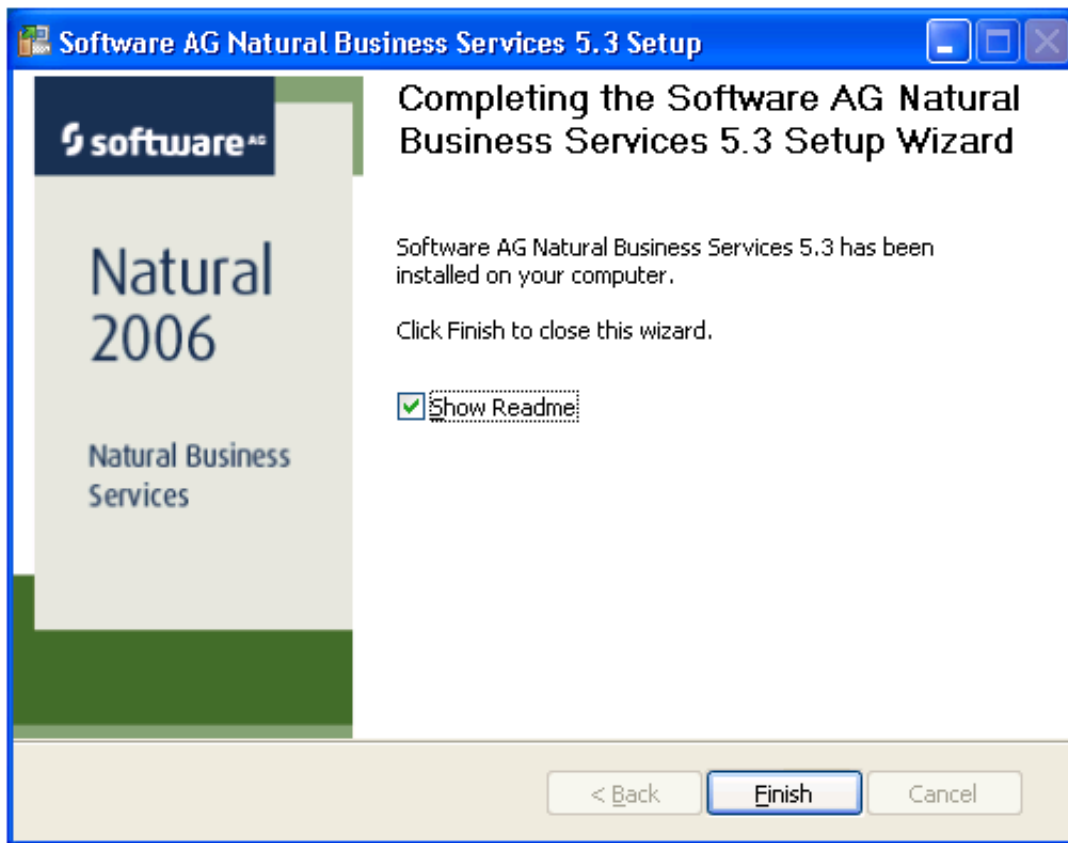
6. Select **Install** to begin copying the files.

The panel displays the progress of the installation. For example:



7. Select **Next**.

The last installation panel is displayed. For example:



By default, the **Show Readme** option is selected and the Readme file will be displayed when the wizard closes. You can de-select the option, but we recommend that you view the Readme file. This file contains last-minute information that may not be contained in the current documentation for Natural Business Services.

8. Select **Finish** to close the wizard.
-