

# Specification Parameters

You can use the Transform-Browse model:

- on the server using the NCSTG command
- Natural Business Services Natural plug-in
- Natural Business Services Eclipse plug-in

## Note:

Although you can generate the Transform-Browse model on the server, we recommend that you use the Transform Browse wizard in one of the Natural Business Services plug-ins.

The Transform Browse wizard has one specification panel: **Verify Transformation Specifications**. The Transform-Browse model has one specification panel: Standard Parameters.

- Verify Transformation Specifications Panel
  - Standard Parameters Panel
- 

## Verify Transformation Specifications Panel

This section describes the **Verify Transformation Specifications** panel for the Transform Browse wizard for the following Natural Business Services (NBS) plug-ins:

- Eclipse Plug-in
- Natural Plug-in

## Note:

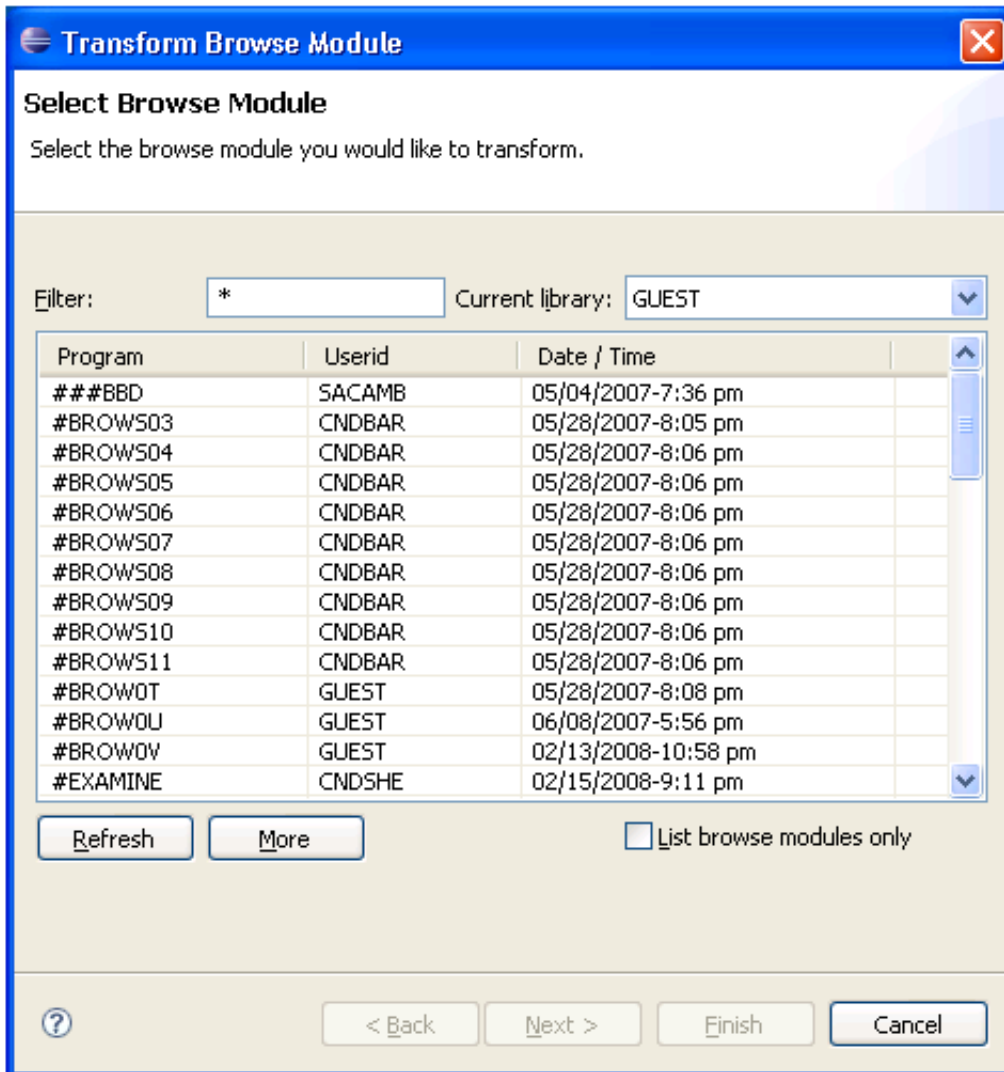
Before transforming a module for the first time, read Tips and Techniques for helpful information.

## Eclipse Plug-in

 **To transform a browse module in the NBS Eclipse plug-in:**

1. Open the context menu for the SPoD connection in the **NBS Repositories** view.
2. Select **Transform browse module**.

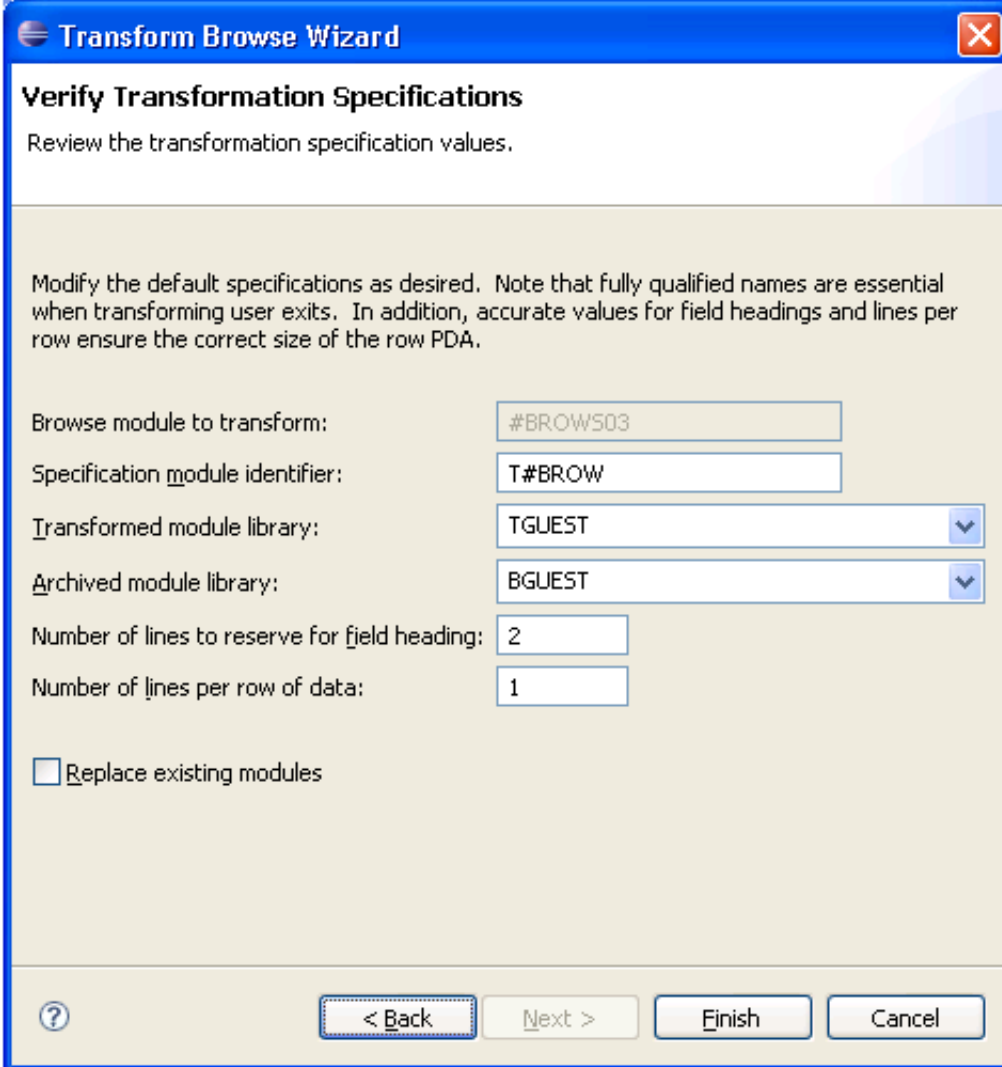
The **Select Browse Module** panel is displayed. For example:



This panel lists the first 50 modules in the library indicated.

- If there are more than 50 modules, select **More** to list the additional modules.
  - If you only want to display browse modules, select **List browse modules only** and then select **Refresh**.
3. Select the browse module you want to transform.
  4. Select **Next**.

The **Verify Transformation Specifications** panel is displayed. For example:



**Transform Browse Wizard**

### Verify Transformation Specifications

Review the transformation specification values.

Modify the default specifications as desired. Note that fully qualified names are essential when transforming user exits. In addition, accurate values for field headings and lines per row ensure the correct size of the row PDA.

Browse module to transform: #BROW503

Specification module identifier: T#BROW

Transformed module library: TGUEST

Archived module library: BGUEST

Number of lines to reserve for field heading: 2

Number of lines per row of data: 1

Replace existing modules

? < Back Next > Finish Cancel

This panel displays the default specification values for the transformation process. The input fields on this panel are:

Field	Description
Specification module identifier	Name of the transform module you are creating.
Transformed module library	Name of the library in which the transformed object browse modules are moved. This name is B + the first seven characters in the current library name.
Archived module library	Name of the library in which the original browse module is moved before the transformation process begins. By default, this name is T + the first seven characters in the current library name.
Number of lines to reserve for field heading	<p>Number of lines reserved for field (column) headings. The default is two lines.</p> <p><b>Tip:</b> Ensure that the correct number of lines is entered in this field. Although the transformation will not fail if the number is inaccurate, problems will become apparent at runtime. For example, if too many data rows are available for a screen, the input line and a data line can overlap at runtime. For more information, see Display Correct Number of Rows.</p>
Number of lines per row of data	<p>Number of lines reserved per row of data. The default is one line.</p> <p><b>Tip:</b> If a browse module can have more than one line per record, but the number of lines per record can vary based on user input, do not change the default for this field and define the AFTER-INPUT user exit for the Object-Browse-Dialog model. For information, see Display a Variable Number of Lines per Record.</p>
Replace existing modules	If this option is selected, modules with the same name are replaced in the libraries shown.

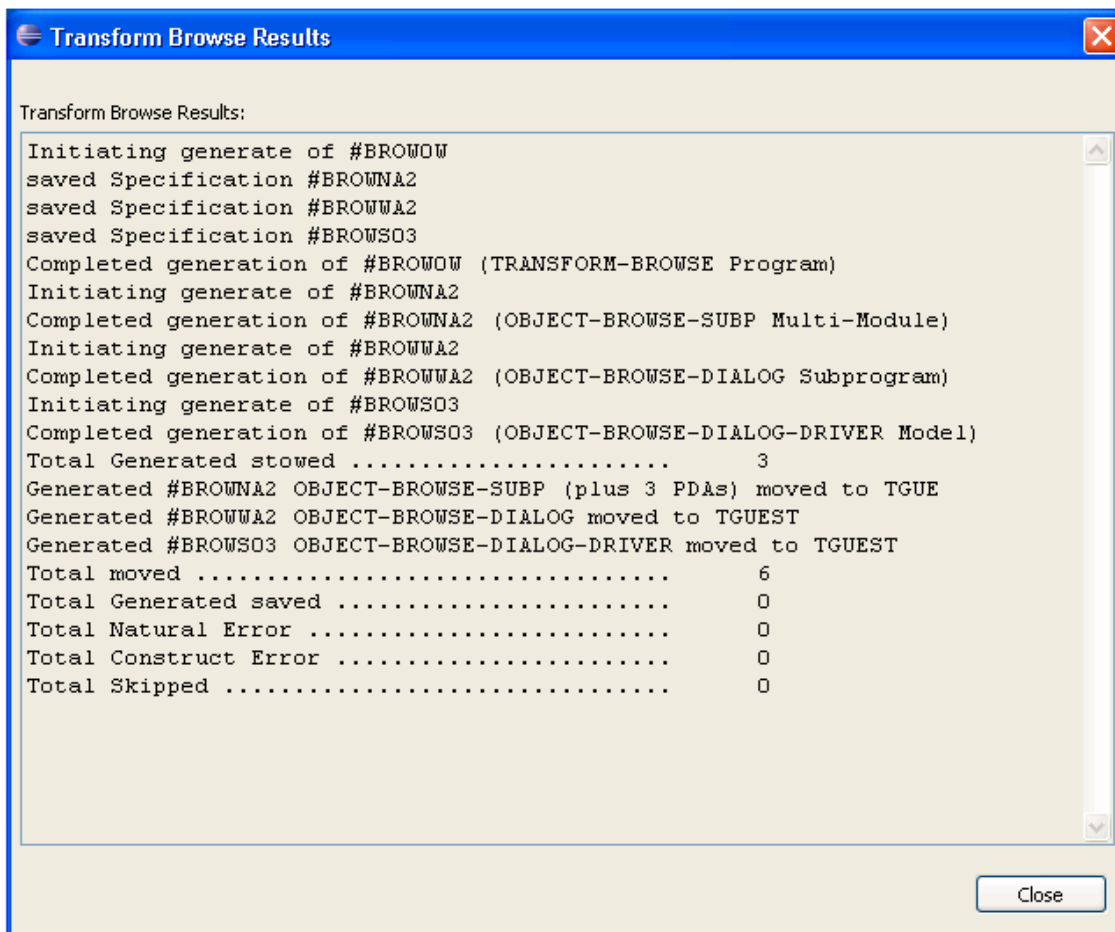
5. Verify the specifications that will be used for the transformation.

If you change these values, ensure the following guidelines are met:

- Use fully qualified names to ensure that user exits are transformed successfully.
- Specify accurate values for field headings and lines per row to ensure that the row PDA is the correct size.

6. Select **Finish** to transform the browse module.

The **Transform Browse Results** window is displayed. For example:



7. Review the results of the transformation.

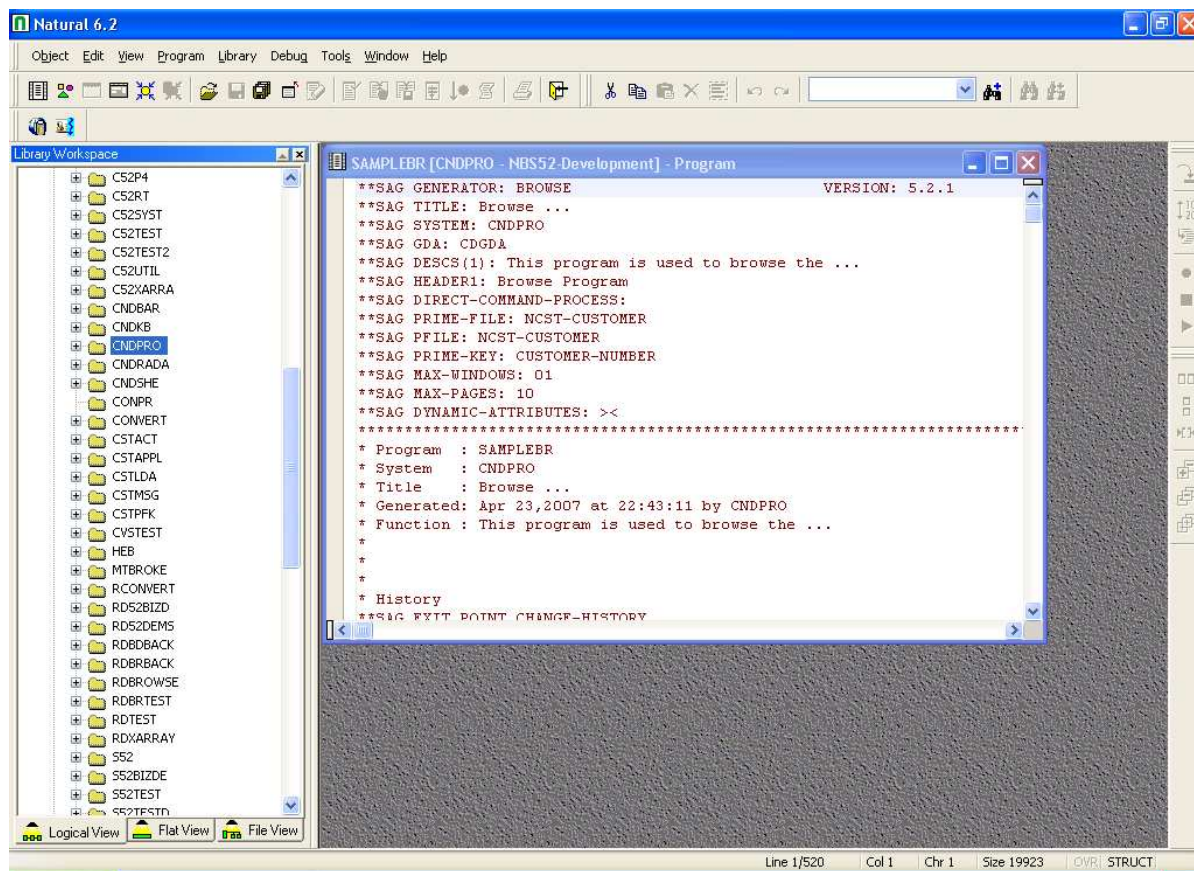
8. Select **Close** to close the window.

## Natural Plug-in

### ▶ To transform a browse module in the NBS Natural plug-in:

1. Display the browse module in the program editor (for information, see the Natural for Windows documentation).

For example:



2. Open the context menu for the module.
3. Select **Transform Browse**.

The **Verify Transformation Specifications** panel is displayed. For example:

The image shows a Windows-style dialog box titled "Transform Browse Wizard" with a subtitle "Verify Transformation Specifications". The dialog has a blue header bar with standard window controls (minimize, maximize, close) on the right. Below the header, there is an information icon (i) followed by a paragraph of text: "Modify the default specifications as desired. Note that fully qualified field names are essential when transforming user exits. In addition, accurate values for field headings and lines per row ensure the correct size of the row PDA." Below this text are six configuration items, each with a play button icon (▶) to its left: "Module name:" with a text box containing "TSAMPLE"; "Transformed module library:" with a text box containing "TCNDPRO"; "Archived module library:" with a text box containing "BCNDPRO"; "Number of lines to reserve for field heading:" with a text box containing "2"; "Number of lines per row of data:" with a text box containing "1"; and "Replace existing modules" with an unchecked checkbox. At the bottom of the dialog, there are five buttons: "Cancel", "Trace...", "Help", "Back", and "Finish".

**Transform Browse Wizard**

**Verify Transformation Specifications**

**i** Modify the default specifications as desired. Note that fully qualified field names are essential when transforming user exits. In addition, accurate values for field headings and lines per row ensure the correct size of the row PDA.

▶ **Module name:** TSAMPLE

▶ **Transformed module library:** TCNDPRO

▶ **Archived module library:** BCNDPRO

▶ **Number of lines to reserve for field heading:** 2

▶ **Number of lines per row of data:** 1

▶  **Replace existing modules**

Cancel Trace... Help Back Next Finish

This panel displays the default specification values for the transformation process. The fields on this panel are:

Field	Description
Module name	Name of the transform module you are creating.
Transformed module library	Name of the library in which the transformed object browse modules are moved. This name is B + the first seven characters in the current library name.
Archived module library	Name of the library in which the original browse module is moved before the transformation process begins. By default, this name is T + the first seven characters in the current library name.
Number of lines to reserve for field heading	Number of lines reserved for field (column) headings. The default is two lines.  <b>Tip:</b> Ensure that the correct number of lines is entered in this field. Although the transformation will not fail if the number is inaccurate, problems will become apparent at runtime. For example, if too many data rows are available for a screen, the input line and a data line can overlap at runtime. For more information, see Display Correct Number of Rows.
Number of lines per row of data	Number of lines reserved per row of data. The default is one line.  <b>Tip:</b> If a browse module can have more than one line per record, but the number of lines per record can vary based on user input, do not change the default for this field and define the AFTER-INPUT user exit for the Object-Browse-Dialog model. For information, see Display a Variable Number of Lines per Record.
Replace existing modules	If this option is selected, modules with the same name are replaced in the libraries shown.

- Verify the specifications that will be used for the transformation.

If you change these values, ensure the following guidelines are met:

- Use fully qualified names to ensure that user exits are transformed successfully.
- Specify accurate values for field headings and lines per row to ensure that the row PDA is the correct size.

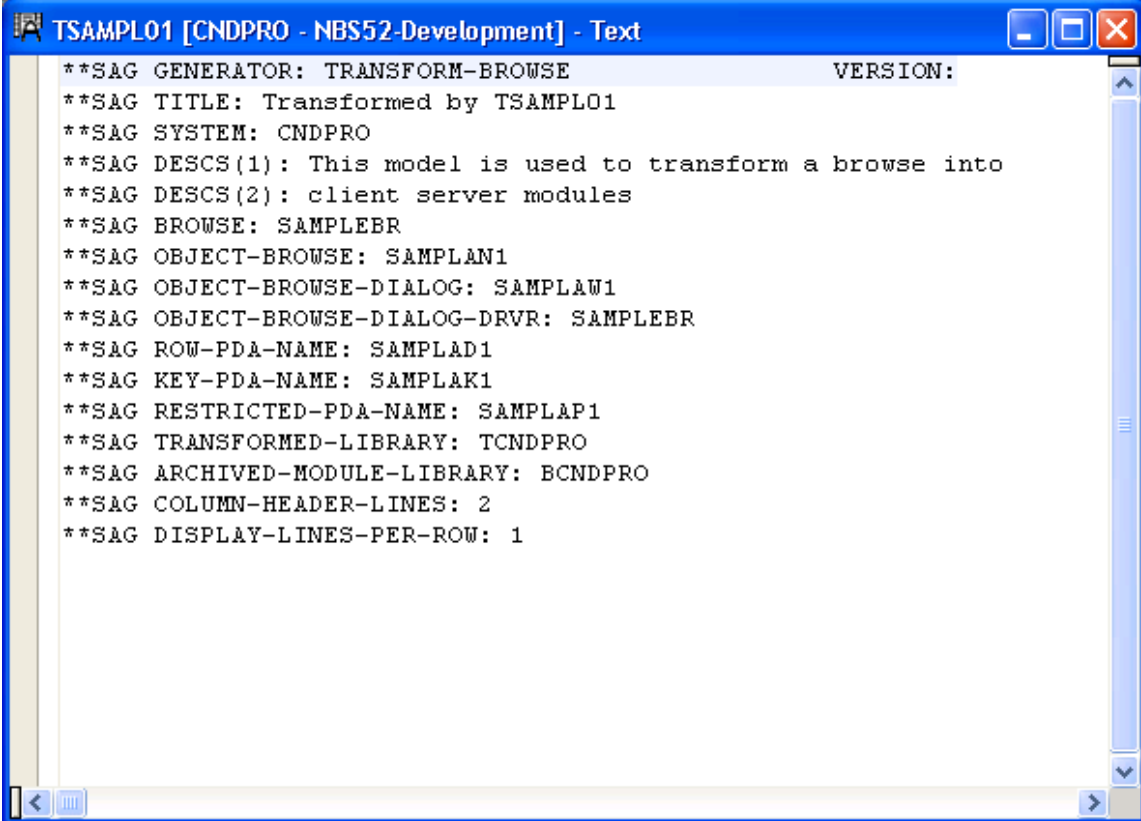
- Select **Finish**.

The **Generate Status** window is displayed. If any of the transformed modules cannot be compiled, the module with the problem is displayed.

- Select **OK**.

The results of the transformation are displayed in the editor. For example:





```
**SAG GENERATOR: TRANSFORM-BROWSE          VERSION:  
**SAG TITLE: Transformed by TSAMPL01  
**SAG SYSTEM: CNDPRO  
**SAG DESCS(1): This model is used to transform a browse into  
**SAG DESCS(2): client server modules  
**SAG BROWSE: SAMPLEBR  
**SAG OBJECT-BROWSE: SAMPLAN1  
**SAG OBJECT-BROWSE-DIALOG: SAMPLAW1  
**SAG OBJECT-BROWSE-DIALOG-DRVR: SAMPLEBR  
**SAG ROW-PDA-NAME: SAMPLAD1  
**SAG KEY-PDA-NAME: SAMPLAK1  
**SAG RESTRICTED-PDA-NAME: SAMPLAP1  
**SAG TRANSFORMED-LIBRARY: TCNDPRO  
**SAG ARCHIVED-MODULE-LIBRARY: BCNDPRO  
**SAG COLUMN-HEADER-LINES: 2  
**SAG DISPLAY-LINES-PER-ROW: 1
```

This window displays the names of the modules generated by the Transform Browse wizard and other specification values. You can invoke the Transform Browse wizard from the context menu for the module and change the specifications (if required). If the transformed modules can be successfully compiled, they are moved to the transformed module library and you can select the next browse module for transformation.

## Standard Parameters Panel

```

CUTRMA                      TRANSFORM-BROWSE Program          CUTRMA0
Nov 07                      Standard Parameters                1 of 1

Module ..... ACUSTN__
System ..... CXT341S_____

Title ..... Transform browse module__
Description ..... This model is used to transform a browse into_____
                  client server modules_____
                  _____
                  _____

Browse ..... _____ *   Field heading lines. 2
Transformed module library. _____ Replace existing modules .. _
Archived module library ... _____ Display lines per row 1

Object browse subp ..... _____
Object browse dialog ..... _____
Object PDA ..... _____
Key PDA ..... _____
Restricted PDA ..... _____
Enter-PF1---PF2---PF3---PF4---PF5---PF6---PF7---PF8---PF9---PF10--PF11--PF12---
main help retrn quit                                     main
    
```

The fields in the upper portion of this panel are similar for all models. For a description of these fields, see Common Fields on the Standard Parameters Panel.

The fields in the lower portion of this panel are:

Field	Description
Browse	Name of the browse module you want to transform into object browse modules. Field-level help is available to select a module.
Field heading lines	Number of lines reserved for field (column) headings. The default is two lines.  <b>Tip:</b> Ensure that the correct number of lines is entered in this field. Although the transformation will not fail if the number is inaccurate, problems will become apparent at runtime. For example, if too many data rows are available for a screen, the input line and a data line can overlap at runtime. For more information, see Display Correct Number of Rows.
Transformed module library	Name of the library in which the transformed object browse modules are moved. By default, this name is B + the first seven characters in the current library name.
Replace existing modules	Indicates whether to replace modules with the same name in the libraries shown.
Archived module library	Name of the library in which the original browse module is moved before the transformation process begins. By default, this name is T + the first seven characters in the current library name.

Field	Description
Display lines per row	Number of lines reserved per row of data. The default is one line.  <b>Tip:</b> If a browse module can have more than one line per record, but the number of lines per record can vary based on user input, do not change the default for this field and define the AFTER-INPUT user exit for the Object-Browse-Dialog model. For information, see Display a Variable Number of Lines per Record.
Object browse subp	Name of the transformed object browse subprogram module.
Object browse dialog	Name of the transformed object browse dialog module.
Object PDA	Name of the transformed object browse parameter data area module. The object PDA contains one field for each field defined in the specified Predict view. These fields are defined within a 1:V structure so the object browse subprogram can support an arbitrary number of return rows.
Key PDA	Name of the transformed object browse key (search) parameter data area module. The key PDA defines the union of all fields that are components of a logical key. Additionally, the generated key PDA contains a field that can be used to begin the browse at a specific record.
Restricted PDA	Name of the transformed object browse restricted parameter data area module. The restricted PDA stores data, such as the last sort key, the last starting value, the last row returned, etc. so that the next set of consecutive records is returned to the caller. The contents of this data area should not be altered by the calling module.

After selecting the browse module and entering your specifications on this panel, press Enter to return to the Generation main menu and generate the modules.