

# NBS Tester


Using the NBS Tester, you can build a test suite to test the connections used to access your business services. The NBS Tester is available on the **Tools** menu in the Natural Business Services Natural plug-in or as a stand-alone utility on the **Start** menu.

- If you run this utility from the Natural plug-in, the current mapped connection is tested.
- If you run the utility from the **Start** menu, you can select which connection to test.

This section covers the following topics:

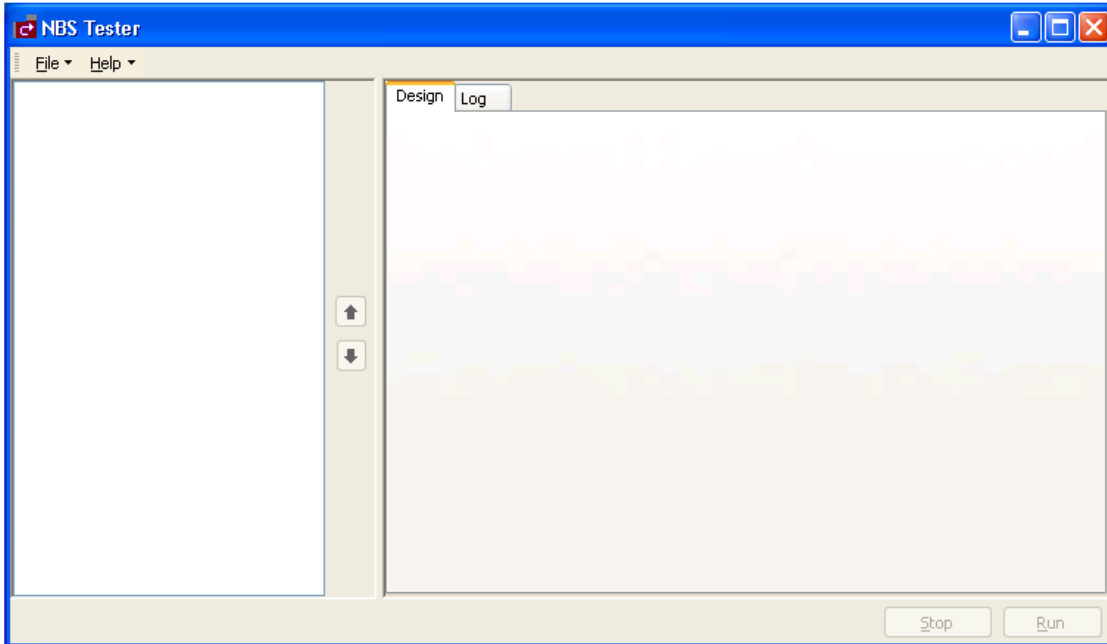
- Build a New Test Suite
  - Add a Test to an Existing Test Suite
  - Reorder a Test in an Existing Test Suite
  - Delete a Test Suite
  - Delete a Test from a Test Suite
  - Access the NBS Configuration Utility
- 

## Build a New Test Suite

 **To create a new test suite:**

1. Select **All Programs > Software AG Natural Business Services > NBS Tester** on the **Start** menu.

The **NBS Tester** window is displayed. For example:

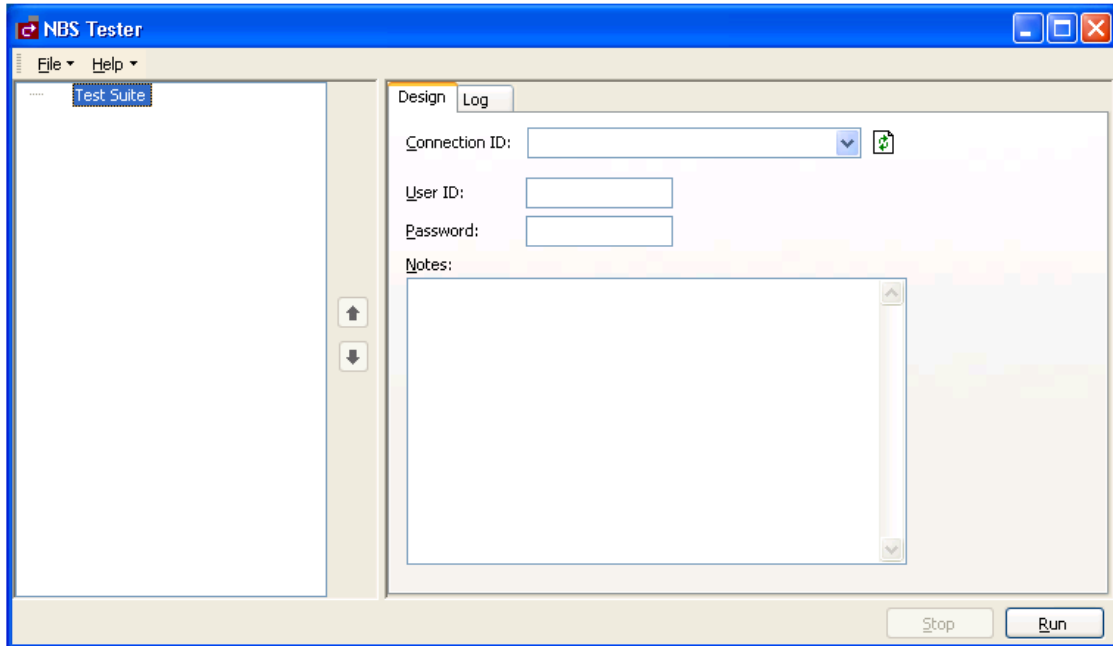


2. Select **New** on the **File** menu.

Test Suite is displayed in the upper left corner of the window.

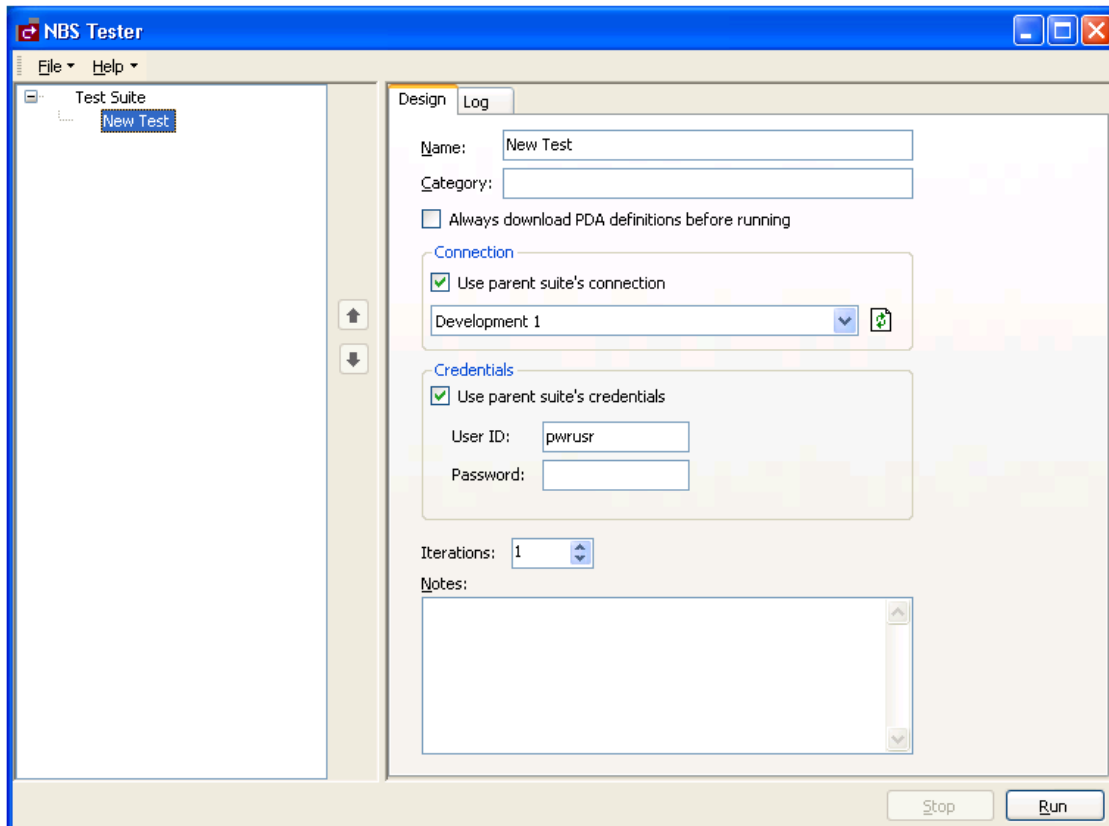
3. Select **Test Suite**.

The Design tab becomes active. For example:



4. Select the connection ID in **Connection ID**.
5. Type the user ID and password for the connection.
6. Open the context menu for Test Suite.
7. Select **Add Test**.

The Design tab displays the specifications for a new test. For example:



8. Type a descriptive name for the test you are creating in **Name** (for this example, type "Test example").

The name is displayed in the Test Suite tree. You can optionally specify the following information for the test:

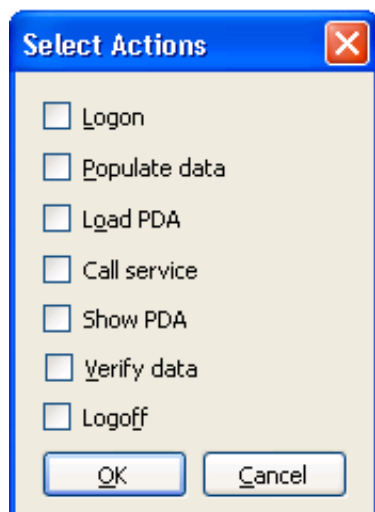
Option	Description
Category	Name of the category for this test suite (for example, Development).
Always download PDA definition before running	If this option is selected, the PDA definition is downloaded before the test is run.
Connection/Use parent suite's connection	If this option is selected, the test suite is part of another test suite and will use the parent test suite's connection ID. If this option is not selected, select the connection ID to use for this test suite.
Credentials/Use parent suite's credentials	If this option is selected, the test suite is part of another test suite and will use the parent test suite's credentials. If this option is not selected, type the user ID and password to use for this test suite.
Iterations	Number of times to run the test.
Notes	Information about the test suite.

- Open the context menu for the new test in the Test Suite tree.

For this example, the Test example node.

- Select **Add Actions**.

The **Select Actions** window is displayed. For example:



This window lists the actions available for the test suite.

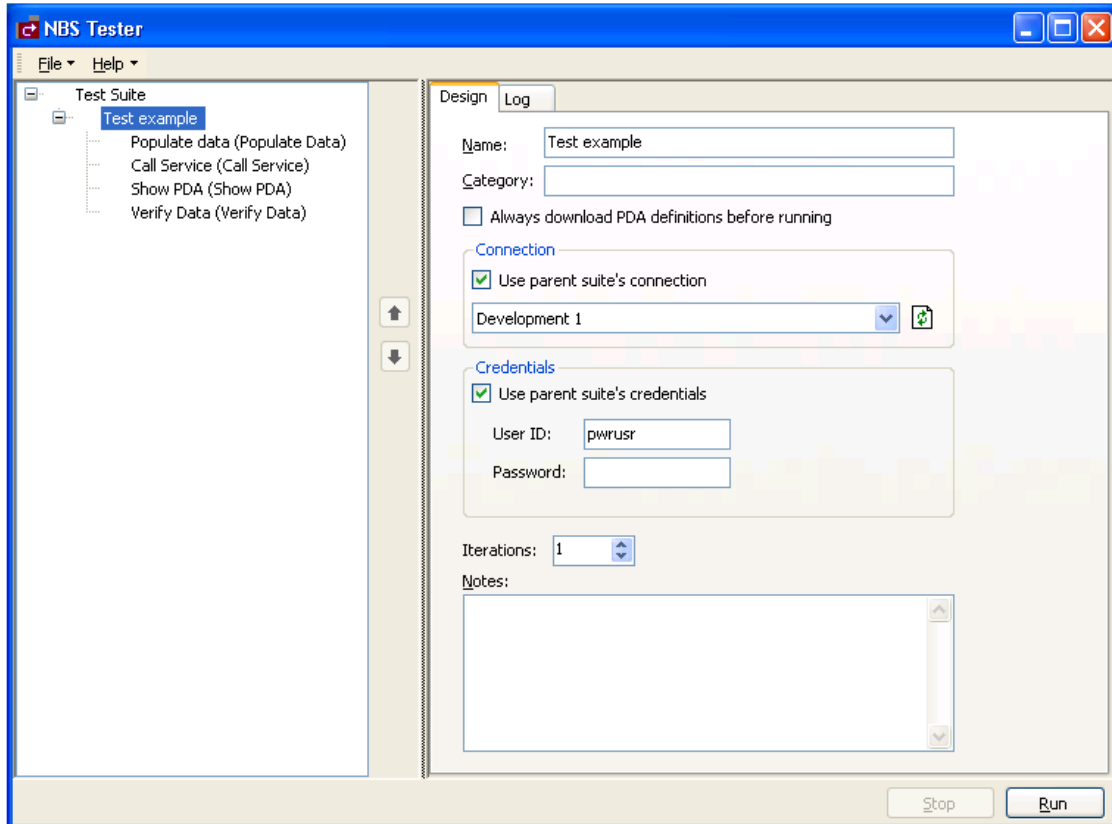
- Select the actions you want to test.

For this example, select the following actions:

- Populate data
- Call service
- Show PDA
- Verify data

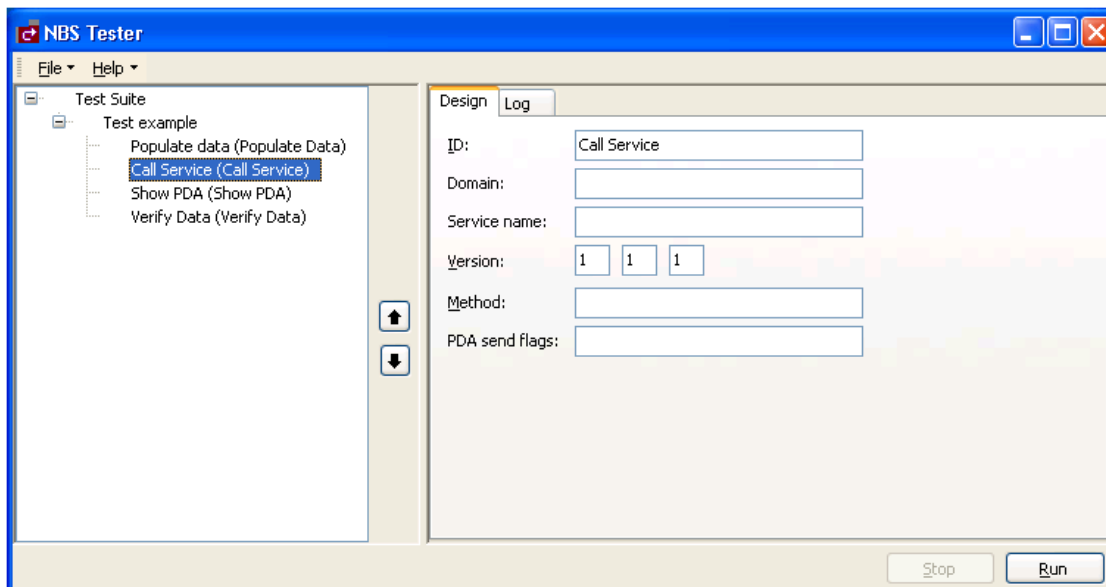
- Select **OK**.
- Expand the Test example node.

For example:



14. Select **Call Service** to specify which service to call.

The call service information is displayed on the Design tab. For example:



15. Type the following information:

Field	Input
Domain	DEMO
Service name	Calculator
Method	Add

**Note:**

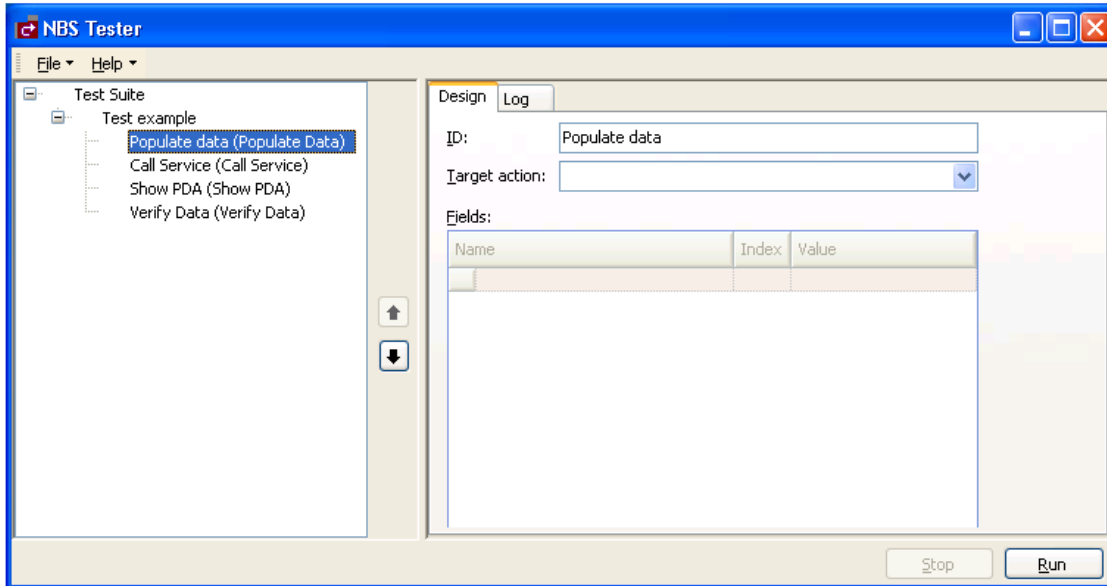
Ensure the input values use the same case as indicated above.

Optionally, you can:

- Type a different call service in **ID**
- Type a different version number in **Version** (by default, 1.1.1)

16. Select **Populate data** to specify which data to send to the service for the test.

The Populate data information is displayed on the Design tab. For example:



17. Select **Call Service** in **Target action**.

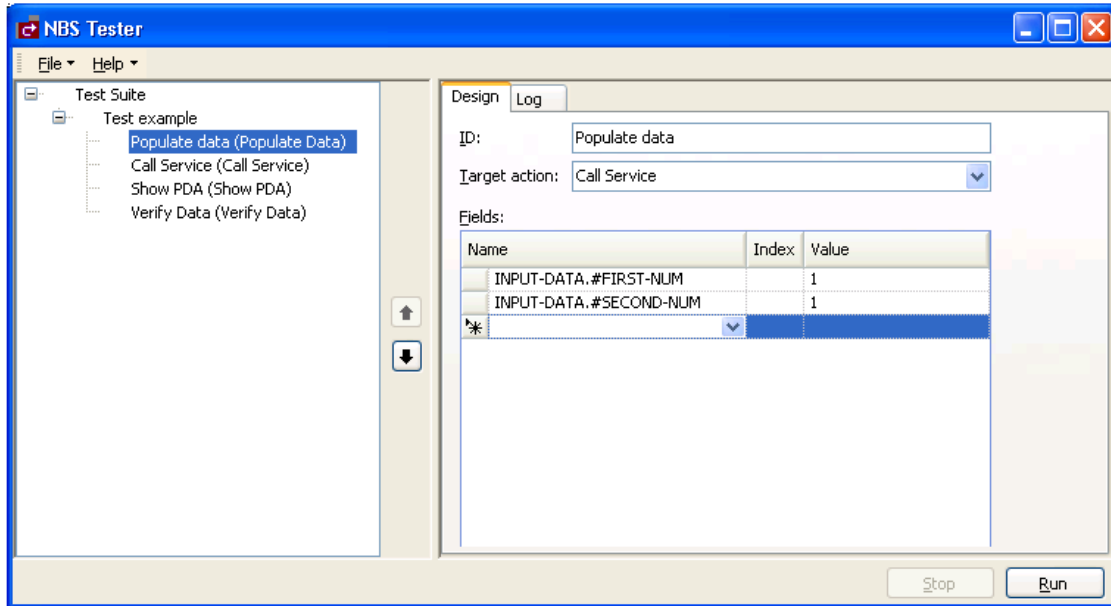
18. Type the following two lines in **Name**:

```
INPUT-DATA.#FIRST-NUM  
INPUT-DATA.#SECOND-NUM
```

19. Type "1" in **Value** for both numbers.

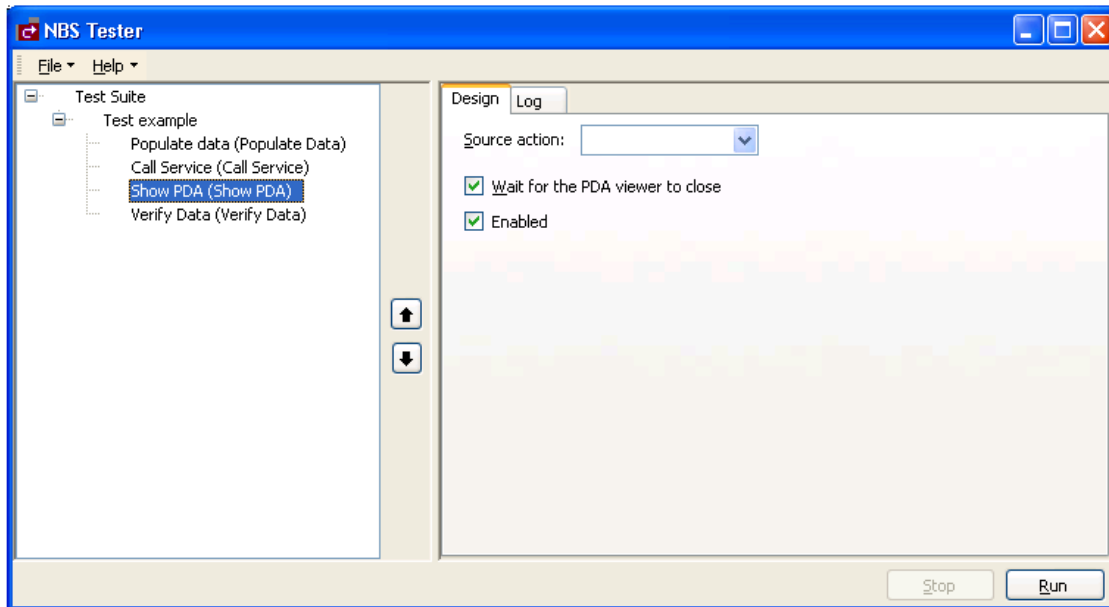
For example:





## 20. Select **Show PDA**.

This action allows you to debug the service for testing purposes. The Show PDA information is displayed on the Design tab. For example:

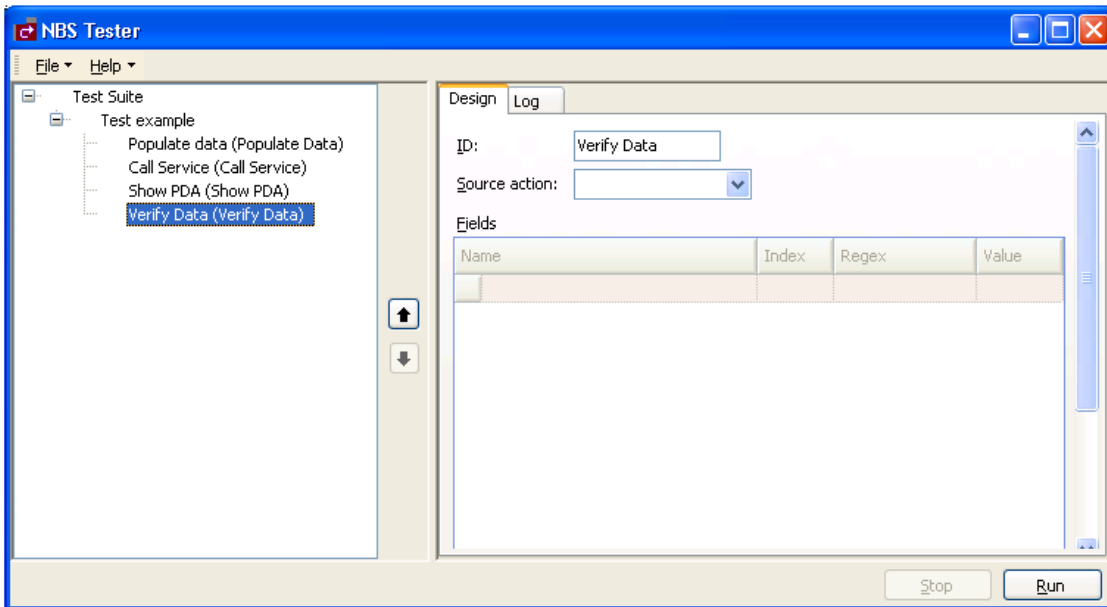


21. Select **Call Service** in **Source action**.

The source action must be specified. This value will be any call service in your test.

22. Select **Verify Data** to verify that the service is working correctly.

The Verify data information is displayed on the Design tab. For example:



23. Select **Call Service** in **Source action**.

24. Type the following in **Name**:

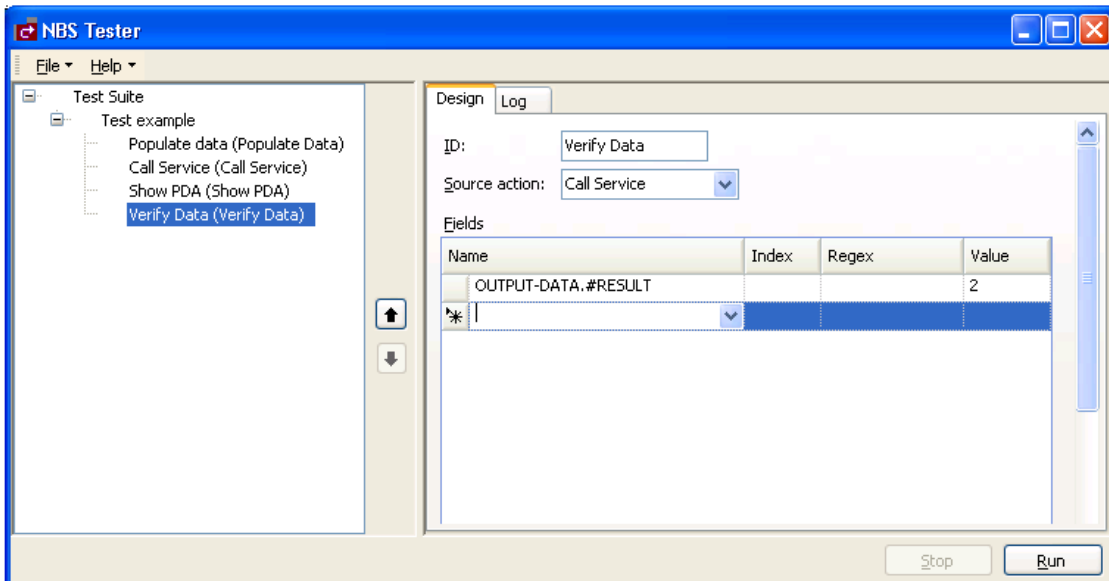
OUTPUT-DATA.#RESULT

**Note:**

Regex indicates a Regular Expression. You can use this field to specify a Regex pattern to check for matches.

25. Type "2" in **Value**.

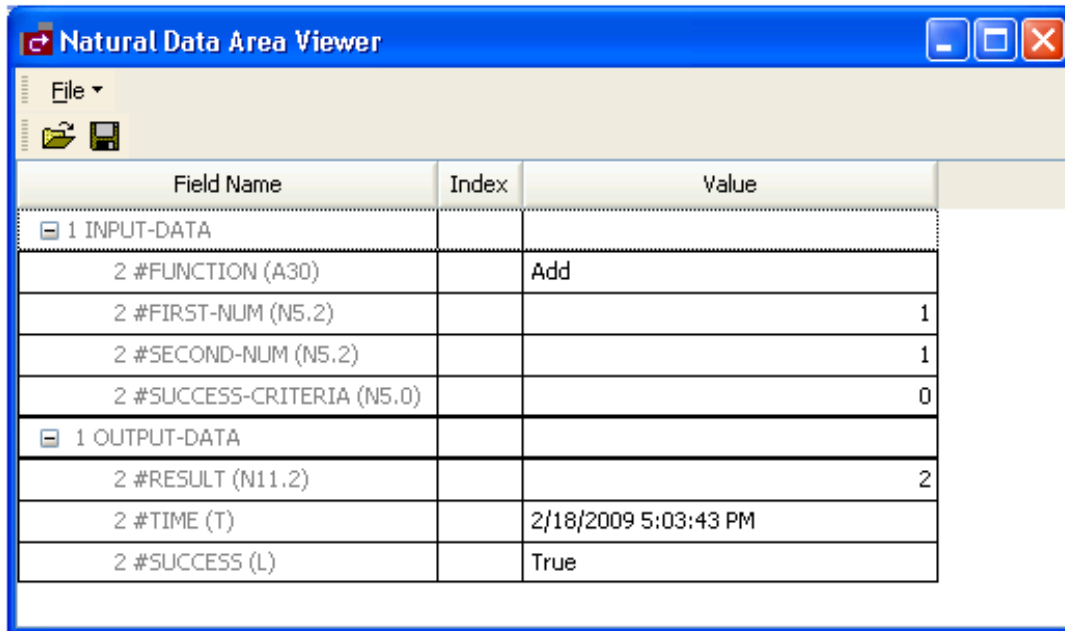
For example:



This value indicates that the expected result of the test is 2.

26. Select **Run**.

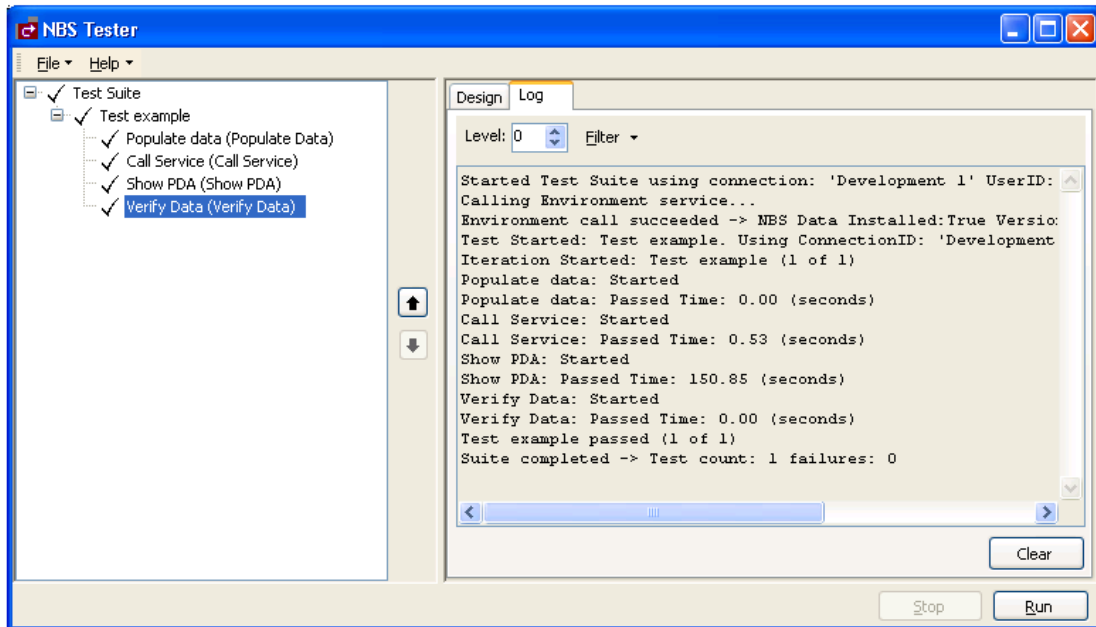
Because you selected **Show PDA**, the **Natural Data Area Viewer** window is displayed. For example:



This window displays the INPUT/OUTPUT data in the PDA for the service.

27. Close the window.
28. Select the Log tab to see the results of the test.

For example:



29. Select **Save** on the **File** menu to save the test suite.

A window is displayed to type a name for the test and select a location to store the test suite.

**Note:**

You can repeat this procedure to create additional test suites.

## Add a Test to an Existing Test Suite

After saving a test suite, you can add other tests to the suite.

**▶ To add a test to an existing test suite:**

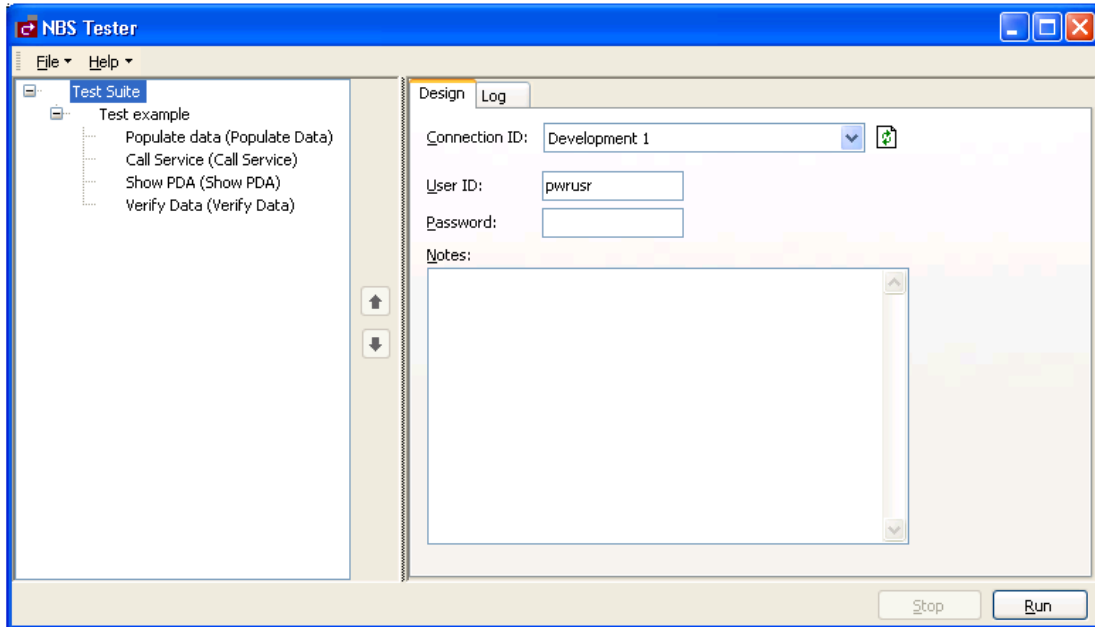
1. Select **Open** on the **File** menu.

A selection window is displayed.

2. Select the test suite.

The selected test suite is displayed in the NBS Tester window.

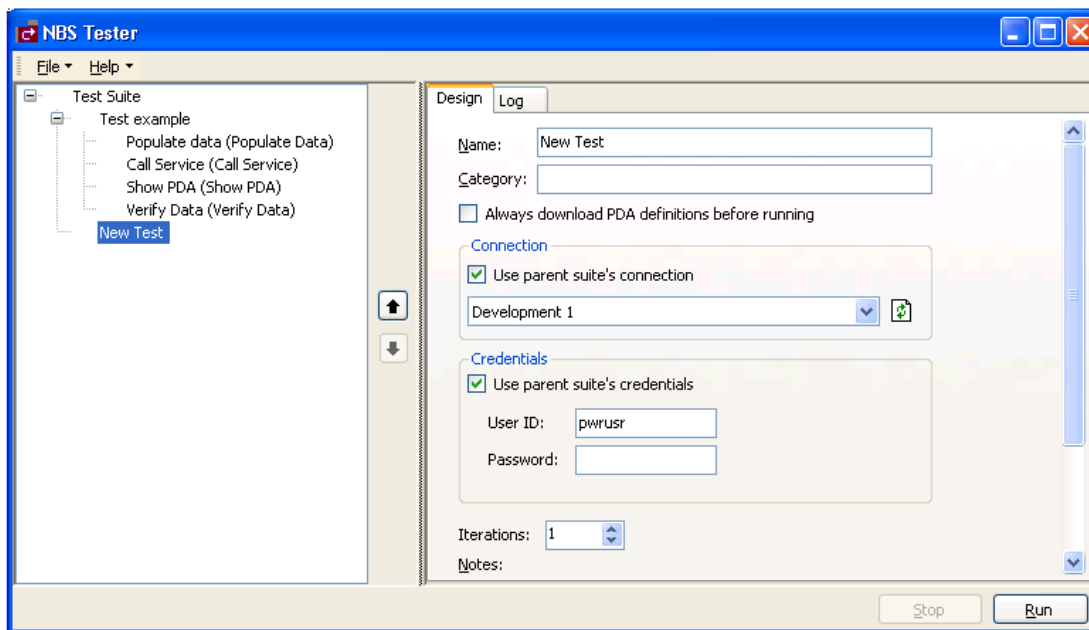
Expand the Test node to see the actions for the test. For example:



Optionally, you can use this window to:

- Change the connection ID for the new test
  - Change the user ID or password
3. Open the context menu for Test Suite.
  4. Select **Add Test**.

The new test is added to the test suite. For example:



5. Enter the specifications for the new test.

For information, see [Build a New Test Suite](#).

6. Select **Save** on the **File** menu to save the changes.

## Reorder a Test in an Existing Test Suite

You can reorder the tests in an existing test suite.

### ► To reorder a test in an existing test suite:

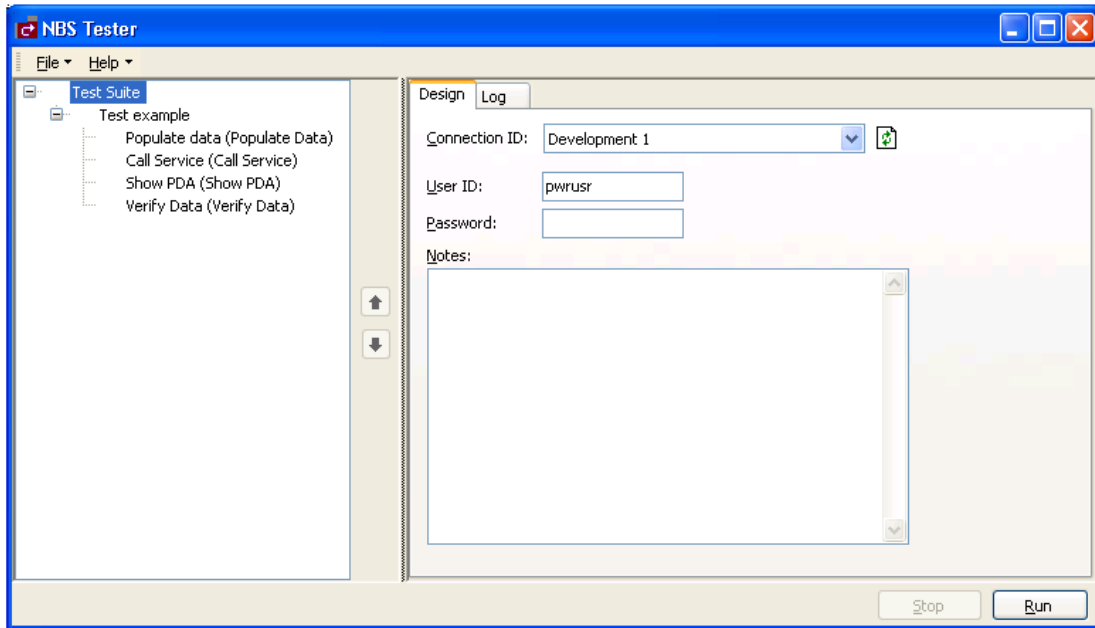
1. Select **Open** on the **File** menu.

A selection window is displayed.

2. Select the test suite.

The selected test suite is displayed in the NBS Tester window.

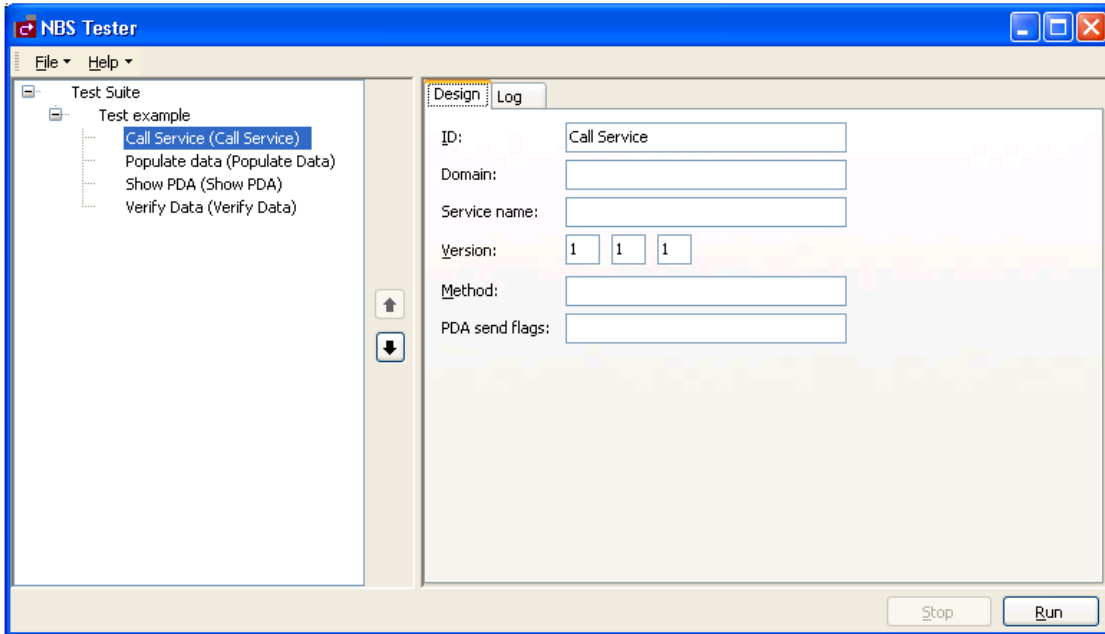
Expand the Test node to see the actions for the test. For example:



3. Select the test you want to reorder.
4. Select the up or down arrow to move the test to a new position.

In the following example, the Call Service action was moved up in the list:





5. Select **Save** on the **File** menu to save the changes.

## Delete a Test Suite

### ▶ To delete an existing test suite:

1. Open the context menu for the test suite.
2. Select **Delete**.
3. Select **Save** on the **File** menu to save the changes.

## Delete a Test from a Test Suite

### ▶ To delete a test from an existing test suite:

1. Open the context menu for the test suite.
2. Select **Delete**.
3. Select **Save** on the **File** menu to save the changes.

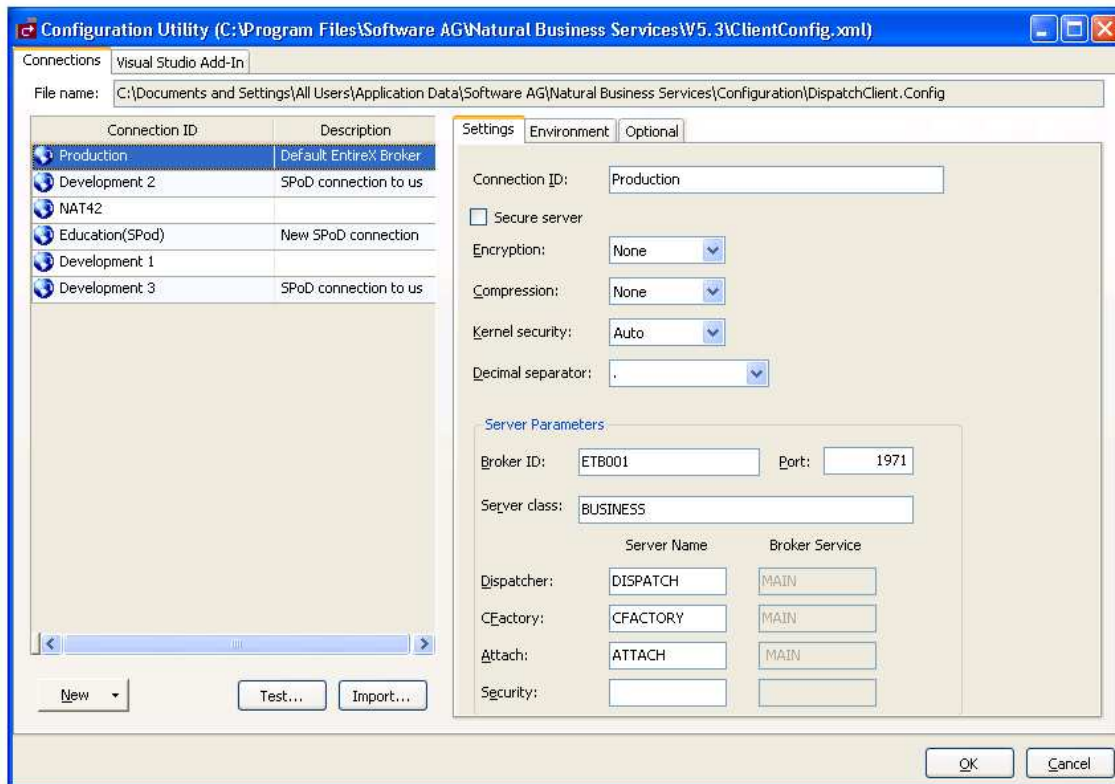
## Access the NBS Configuration Utility

You can use the NBS Tester to access the Configuration utility.

► To access the Configuration utility:

- Select **NBS Configuration** on the **File** menu.

The Configuration utility is displayed. For example:



For information about the settings on this panel, see:

- For the Eclipse plug-in, Configure Connections
- For the Visual Studio add-in, Configure Connections