

NBS Server Monitor

The **NBS Server Monitor** is a GUI application that provides functionality similar to the character-based Manage Servers function in the Business Service Administration subsystem ("SA MS" on the command line). Use the **NBS Server Monitor** windows to monitor and control active Natural Business Services servers. This application accepts the same commands as are available using the Manage Servers function. The only restriction is that at least one instance of the Attach Manager must be running, which prevents its use to initiate the first session of that server.

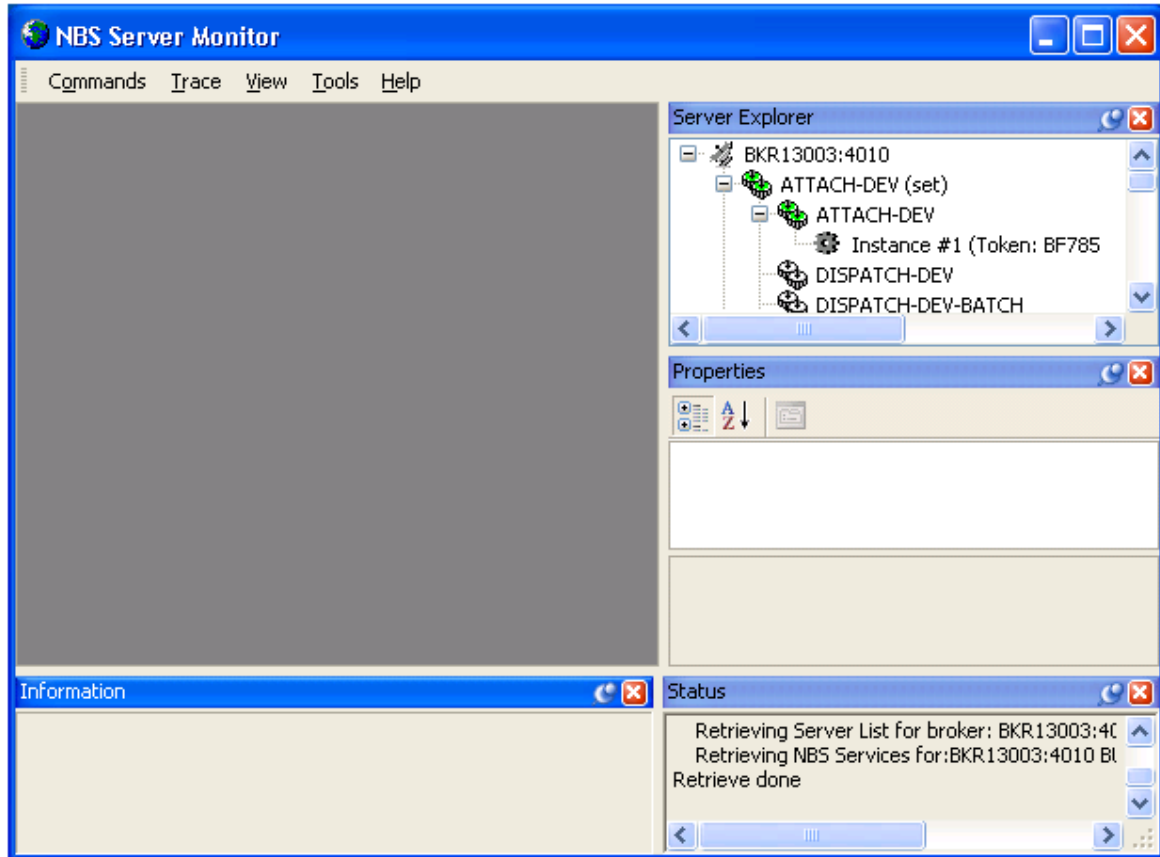
Before you can use the **NBS Server Monitor**, you must specify the development configuration settings for the client. For information see [Configure the Client Component](#).

Access the NBS Server Monitor

 **To access the NBS Server Monitor:**

- Select **All Programs > Software AG Natural Business Services > Server Monitor** on the **Start** menu.

The **NBS Server Monitor** is displayed. For example:



The **NBS Server Monitor** attempts to connect to all pre-defined servers and display detailed information about the servers that are currently running.

Use the NBS Server Monitor Windows

The following table describes the **NBS Server Monitor** windows:

Window	Description
Main	Displays the commands sent to the servers. Commands issued via the context menu are also recorded in this window, which allows you to modify and re-submit the commands to the same server. The main window also contains the output from most commands sent to the servers.
Server Explorer	Contains a tree view of all pre-defined Broker nodes, as well as the names of all the NBS servers and services currently running under each node.
Properties	Contains detailed information about the server selected in the Server Explorer window.
Information	Contains additional details about the server selected in the Server Explorer window.
Status	Contains information about the status of the connection for each Broker node. Tip: Use this window as a starting point for debugging communication problems.

Arrange the NBS Server Monitor Windows

Each of the **NBS Server Monitor** windows can be displayed in the following modes:

- docked
- floating
- hidden
- auto-hide

To select the display mode:

1. Open the context menu for the window's title bar.
2. Select one of the display modes listed on the submenu.

Note:

You can also use drag-and-drop functionality to move any window by its title bar.

To restore all windows to their original arrangement:

- Select **Reset** on the **View** menu.

Refresh Data

Since the server information is constantly changing, you may want to refresh the data periodically. This section describes how to refresh the data manually and how to set up the **NBS Server Monitor** to automatically retrieve fresh data at predefined intervals.

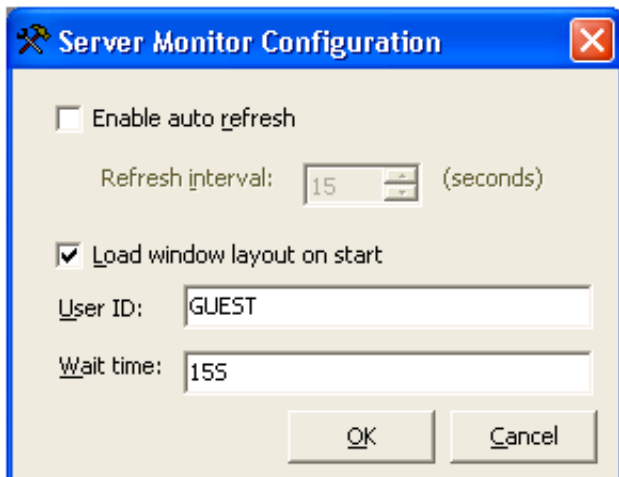
▶ **To manually refresh data:**

- Select **Refresh** on the **View** menu.

▶ **To set up the NBS Server Monitor to automatically refresh data:**

1. Select **Configuration** on the **Tools** menu.

The **Server Monitor Configuration** window is displayed. For example:



2. Select **Enable auto refresh**.

The **Refresh interval** option is enabled.

3. Select the number of seconds before refreshing data.
4. Select **OK**.

Set Security Credentials

▶ **To set Broker security credentials for a remote Broker node:**

1. Open the context menu for the Broker node in the **Server Explorer** window.

Tip:

You can also select **Set Credentials** on the **Tools** menu.

The **Set Credentials** window is displayed, prompting you to enter your user ID and password.

2. Select **OK**.
3. Select **Refresh** on the **View** menu to refresh the **NBS Server Monitor** window.

Send Commands to the Servers

You can send commands to any server, provided there is at least one copy of an Attach Manager running under the corresponding Broker node.

To send commands to a server:

1. Open the context menu for the server in the **Server Explorer** window.

Tip:

You can also open the **Commands** menu.

2. Select the command from the commands listed.

Create Trace Files

To create trace files for any active server:

1. Open the context menu for the server in the **Server Explorer** window.

Tip:

You can also select **Create** on the **Trace** menu.

2. Select **Trace**.