

Introduction

The Natural Business Services Eclipse plug-in helps you create business services in Natural and then connect to the business service repository and generate Web services or client proxy classes to access the services. In addition, you can use the plug-in to deploy these classes as Web services using the Apache Axis framework.

Use the Eclipse plug-in to:

- Create and maintain business services

For information, see [Developing Business Services](#).

- Access the service repository

For information, see [Use the NBS Repositories View](#).

- Generate Web services to access Natural business services

For information, see [Deploy the Client Proxy Class as a Web Service Class](#).

- Generate client proxy classes to access Natural business services

For information, see [Developing Client Proxy Classes and Web Services](#).

- View all required files and edit them easily

For information, see [Use the NBS Repositories View](#).

Installation

During the Natural Business Services (NBS) Windows installation procedure, the Eclipse plug-in is copied to the default NBS installation folder. If desired, you can change the default location and install the plug-in in your Eclipse installation folder. This allows the plug-in to be automatically available in Eclipse.

Note:

For information on installing the Eclipse plug-in on Windows, see [Natural Business Services Installation on Windows](#).

This section covers the following topics:

- [Install Plug-in for Eclipse Europa \(3.3\)](#)
- [Install Plug-in for Eclipse Ganymede \(3.4\)](#)
- [Activate the Eclipse Plug-in](#)

Install Plug-in for Eclipse Europa (3.3)

After the Eclipse plug-in has been copied to the default NBS installation folder, you can install the plug-in on Eclipse.

To install the plug-in on Eclipse Europa:

1. Start Eclipse.
2. Select **Software Updates > Find and Install** on the **Help** menu.
3. Select **Search for New Features to install**.
4. Select **Next**.
5. Select **New Archived Site**.
6. Select the path for the NBS 53 archive site.

By default, this path is *C:\Program Files\Software AG\Natural Business Services\V5.3\EclipsePlugin\Updates\com.softwareag.nbs-53.zip*.

7. Provide a site name.
8. Select **OK**.
9. Ensure that the new site is selected.
10. Select **Finish**.

The installation wizard is displayed.

11. Install the plug-in.
12. Restart Eclipse.

Install Plug-in for Eclipse Ganymede (3.4)

After the Eclipse plug-in has been copied to the default NBS installation folder, you can install the plug-in on Eclipse.

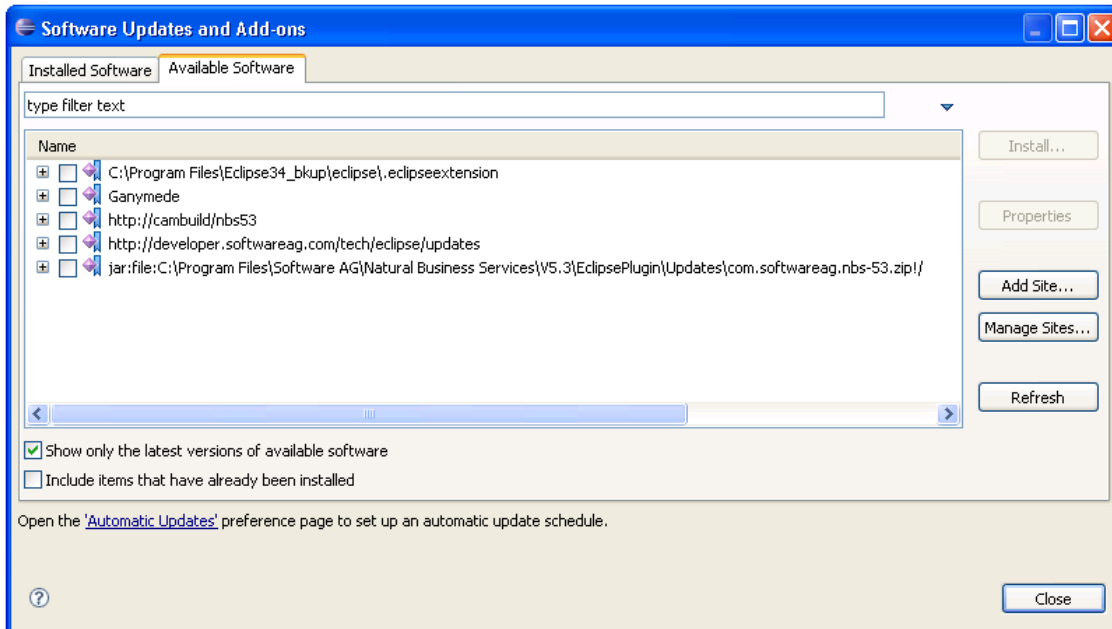
To install the plug-in on Eclipse Ganymede:

1. Start Eclipse.
2. Select **Software Updates** on the **Help** menu.

The **Software Updates and Add-ons** panel is displayed.

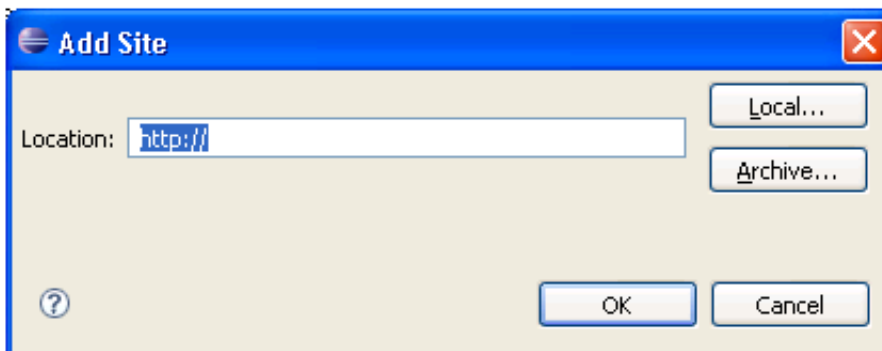
3. Select the **Available Software** tab.

The available software is listed. For example:



4. Select **Add Site**.

The **Add Site** window is displayed. For example:



5. Select **Archive**.

The **Repository Archive** window is displayed.

6. Select the path for the NBS 53 archive site.

By default, this path is *C:\Program Files\Software AG\Natural Business Services\V5.3\EclipsePlugin\Updates\com.softwareag.nbs-53.zip*.

7. Provide a Site name.

8. Select **OK**.

The **Software Updates and Add-ons** panel is redisplayed.

9. Select the features you want to install.

We recommend that you select all features.

10. Select **Install**.

The installation wizard is displayed.

11. Install the plug-in.

12. Restart Eclipse.

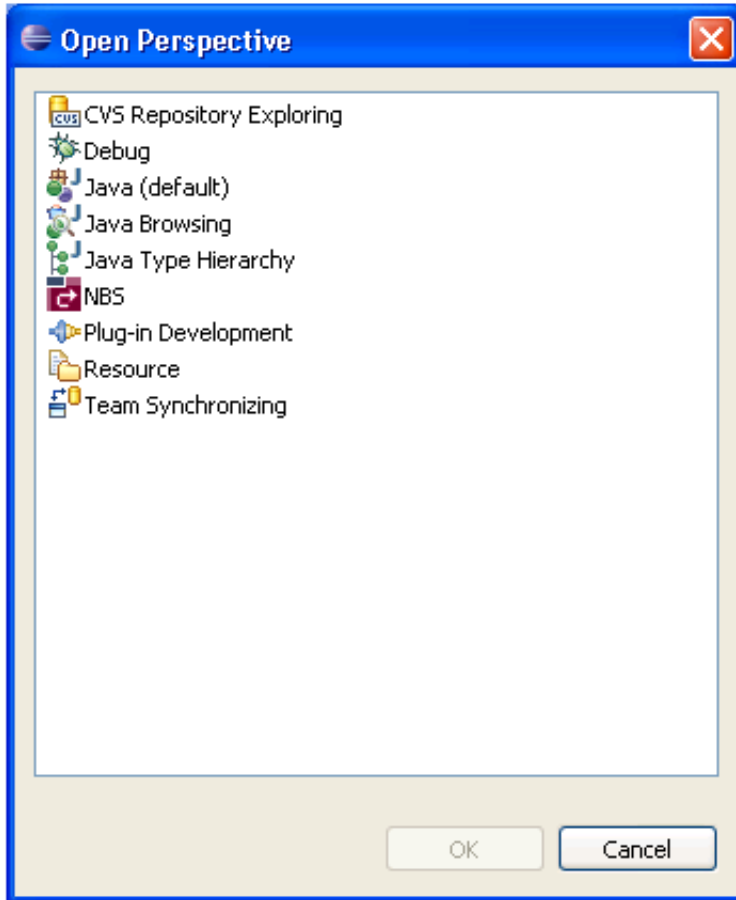
Activate the Eclipse Plug-in

This section describes how to activate the Eclipse plug-in for Natural Business Services (NBS). To help organize the development environment, an NBS perspective is provided.

To activate the Eclipse plug-in:

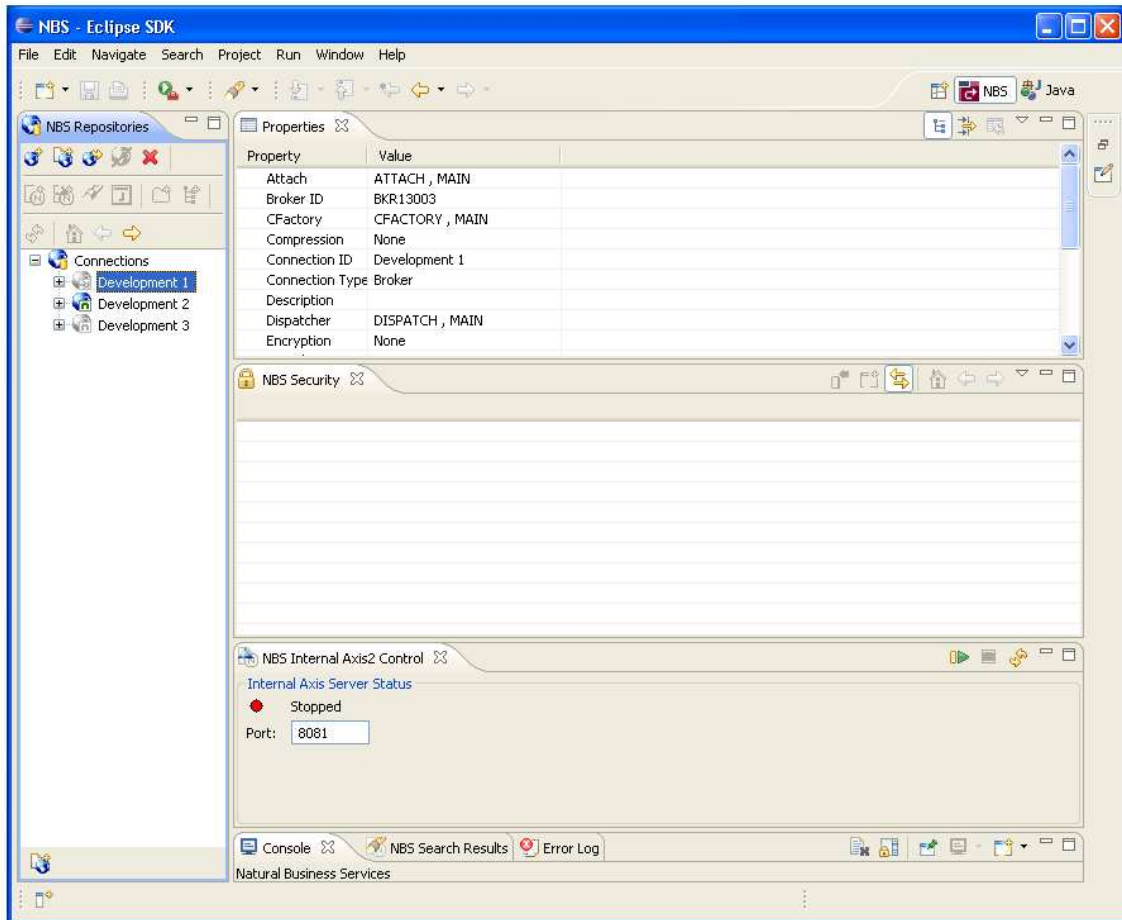
1. Select **Open Perspective > Other** on the **Window** menu.

The **Open Perspective** window is displayed. For example:



2. Select **NBS**.
3. Select **OK**.

The **NBS - Eclipse SDK** is displayed, showing the standard views defined for the NBS perspective. The **NBS Repositories** view lists the available connections. To view the settings defined for a connection, select the connection in the **NBS Repositories** view. The settings are displayed in the **Properties** view. For example:



You can customize the NBS perspective as desired. The next time you start Eclipse, your NBS perspective will be loaded.

Note:

For information on configuring connections, see [Configure Connections](#).