

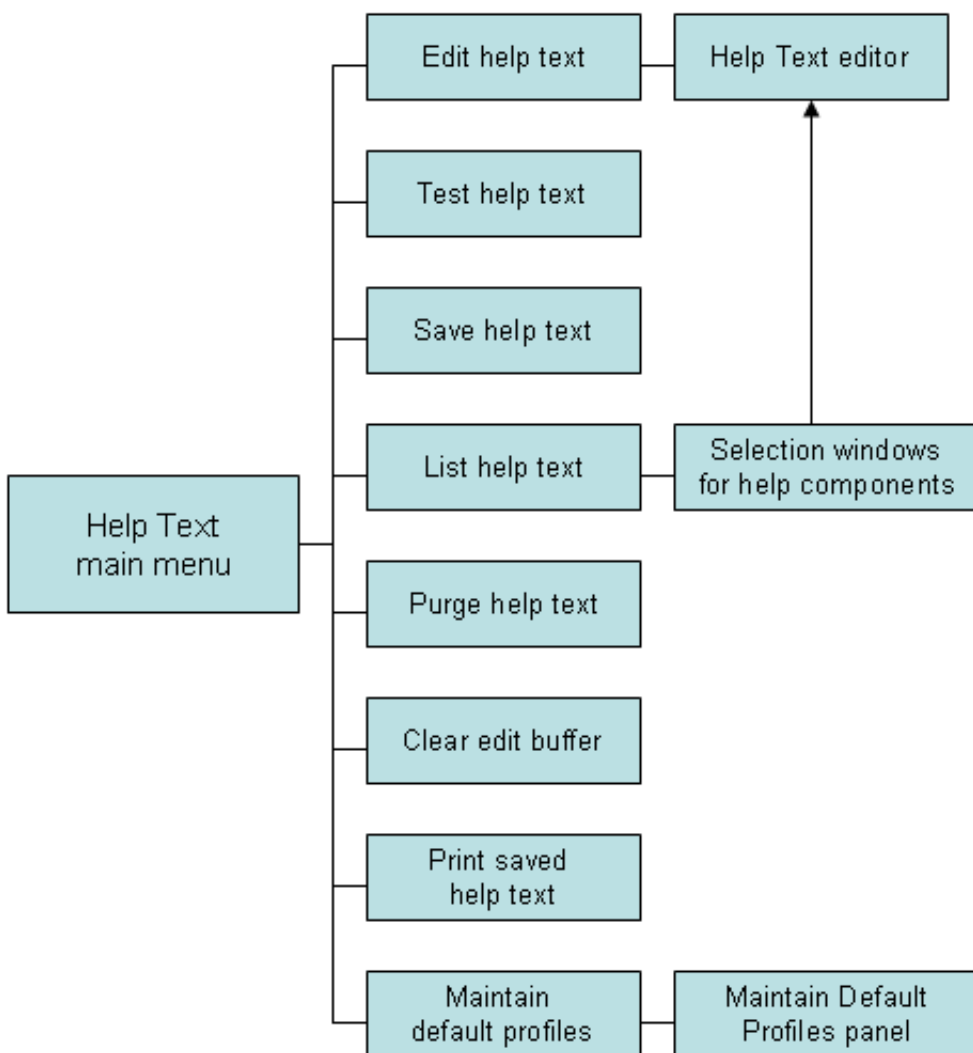
# Using the Help Text Subsystem

This section describes how to use the Help Text subsystem to create help text for your applications. The following topics are covered:

- Structure of the Help Text Subsystem
  - Features and Functions of the Help Text Main Menu
- 

## Structure of the Help Text Subsystem

The following diagram illustrates the structure of the Help Text subsystem and the functions available on the Help Text main menu:



## Features and Functions of the Help Text Main Menu

The Help Text main menu is displayed when you invoke the Help Text subsystem. For example:

```

CSHMAIN                      N a t u r a l   C o n s t r u c t          CSHMNM0
Aug 17                      H e l p   T e x t   M a i n   M e n u          1   o f   1

                               F u n c t i o n s
                               -----
E   Edit Help Text
T   Test Help Text
S   Save Help Text
L   List Help Text
P   Purge Help Text
C   Clear Edit Buffer
H   Print Saved Help Text
M   Maintain Default Profiles
?   Help
.   Return
                               -----

Function ..... _
Type ..... P *
Major ..... _____
Minor ..... _____
Language ..... 1_   Profile ..... NCSTHELP_
Enter-PF1---PF2---PF3---PF4---PF5---PF6---PF7---PF8---PF9---PF10--PF11--PF12---
      help  retrn quit                                          lang

```


### Notes:

1. For information about accessing the Help Text subsystem, see Access Natural Construct.
2. For information about the Help and Return functions, see Standard Menu Codes.

The fields on the Help Text main menu are:

Field	Description
Function	Code corresponding to the function you want to perform. For example, type "E" to edit a help member.

Field	Description
Type	<p>Code corresponding to the Type component for the help text. Valid Type components are:</p> <ul style="list-style-type: none"> <li>● D Help for a database field (Minor component) within a file (Major component)</li> <li>● F Help for a field within a program</li> <li>● P Help for a program or map</li> <li>● O Miscellaneous help (the Major and Minor components may have any value; for example, any procedure or glossary type help text)</li> </ul>
Major	<p>Major component for the help text you want to create, view, or modify. Along with the Minor and Type components, the Major component uniquely identifies a help member so that it can be located and displayed when help is requested.</p> <p>For example, to set up passive help for the #CUSTOMER-NUM field on a panel (using Natural Construct naming conventions), enter the following values:</p> <pre>Type ..... F * Major ..... #_____ Minor ..... CUSTOMER-NUM_____</pre> <p>When a user requests help in the Customer Number field, the program retrieves the help text using the Type/Major/Minor component names.</p>
Minor	<p>Minor component for the help text you want to create, view, or modify. Along with the Major and Type components, the Minor component uniquely identifies a help member so that it can be located and displayed when help is requested.</p>
Language	<p>Code corresponding to the language in which the help member will be created. For example, for an English help member, type "1", for German, type "2", for French, type "3", etc. The help member corresponding to the current language is displayed when a user requests help.</p> <p><b>Notes:</b></p> <ol style="list-style-type: none"> <li>1. If a help member for the current language does not exist, the English member is displayed by default.</li> <li>2. To view a list of available language codes for selection, press PF12 (lang).</li> <li>3. For information about multilingual support, see Provide Multilingual Support.</li> </ol>
Profile	<p>Name of the default help profile (for example, NCSTHELP). Help profiles define the size and placement of help windows. For information, see Maintain Default Profiles Function.</p>

 **To access a function on the Help Text main menu:**

1. Type the appropriate code in the Function field.
2. Type the Type, Major, Minor, and Language components for a help member.
3. Optionally, type the profile name for the help member.
4. Press Enter.

This section covers the following topics:

- Edit Help Text Function
- Test Help Text Function
- Save Help Text Function
- List Help Text Function
- Purge Help Text Function
- Clear Edit Buffer Function
- Print Saved Help Text Function
- Maintain Default Profiles Function

## **Edit Help Text Function**

This function on the Help Text main menu invokes the Help Text editor, where you can create new help members or edit existing ones.

### **To create or edit a help member:**

1. Type "E" in the Function field.
2. Type the Type component in the Type field.
3. Type the Major and Minor components in their respective fields.

To select from a list of Major and Minor components, use the List function (see List Help Text Function).

4. Type the code for the language in which the help member will be set up in the Language field.

To select from a list of language codes, use the List function.

5. Type the name of the default profile you are using in the Profile field.

To select from a list of default profiles, remove the value from the Profile field and press Enter. The Select Profile window is displayed. This window is described in List Help Text Function.

6. Press Enter.

The Help Text editor is displayed.

### Notes:

1. Any changes or additions performed in the editor are placed in the edit buffer until they are saved or cleared.
2. You can replace or modify the profile settings for the help member in this editor. These changes are saved for the current help member only. For information, see [Change the Current Help Profile](#).
3. For more information about creating or editing a help member, see [Use the Help Text Editor](#).

## Test Help Text Function

This function on the Help Text main menu displays the help member currently in the edit buffer as it will appear to a user. Use this function to:

- Review the layout of your help window
- Test any hotlinks
- Ensure the correct message numbers have been used

### To test the current help member:

1. Type "T" in the Function field.
2. Type the Type, Major, Minor, and Language components in their respective fields.
3. Press Enter.

The help member is displayed. For example:

```

                                Maint Help
                                Standard Parameters

The Standard Parameters panel allows for the specification of
parameters which are not generator definition specific, but
pertain to all programs or class of programs.
For model details see: <<Maint>>

Field Description
<<Module>>
<<System>>
<<Global data area>>
<<With block>>
<<Title>>
<<Description>>
<<First header>>
<<Second header>>
<<Command>>
Page ... 1 / 2
Enter-PF1---PF2---PF3---PF4---PF5---PF6---PF7---PF8---PF9---PF10--PF1
frwr help  retrn quit                                bkwr frwr

```

**Tip:**

You can also test the current help member by entering "Test" on the command line of the Help Text editor.

If there is more than one page of help text, you can navigate through the pages as follows:

Action	Method
Display the next page.	Press PF8 (frwr) or Enter.
Display the previous page.	Press PF7 (bkwr).
Display a page that is one or more pages before or after the current page.	Type the page number in the Page field and press Enter.
Return to the Help Text main menu.	Press PF2 (retr).

**Notes:**

1. The help text is formatted based on the profile set up for the help member. To set up a different profile, see Change the Current Help Profile.
2. For information about creating hotlinks for help members, see Add Hotlinks.
3. For information about using message numbers, see Use Message Numbers.

**Save Help Text Function**

This function on the Help Text main menu saves the help text currently in the edit buffer to the help text file.

 **To save the current help member:**

1. Type "S" in the Function field.
2. Ensure that the Type, Major, Minor, Language, and Profile values are correct.
3. Press Enter.

A message is displayed confirming that you saved (or replaced) the help text.

**Tip:**

You can also save a help member by entering "SAVEH" on the command line of the Help Text editor.

**List Help Text Function**

This function on the Help Text main menu lists existing help text components for selection.

 **To list the current help text components:**

1. Type "L" in the Function field.

2. Press Enter.

A window is displayed for each blank field or field containing a non-valid value on the Help Text main menu. When all the fields are blank or contain non-valid values, one selection window is displayed for each of the following fields:

- Type
- Major
- Minor
- Language
- Default profile

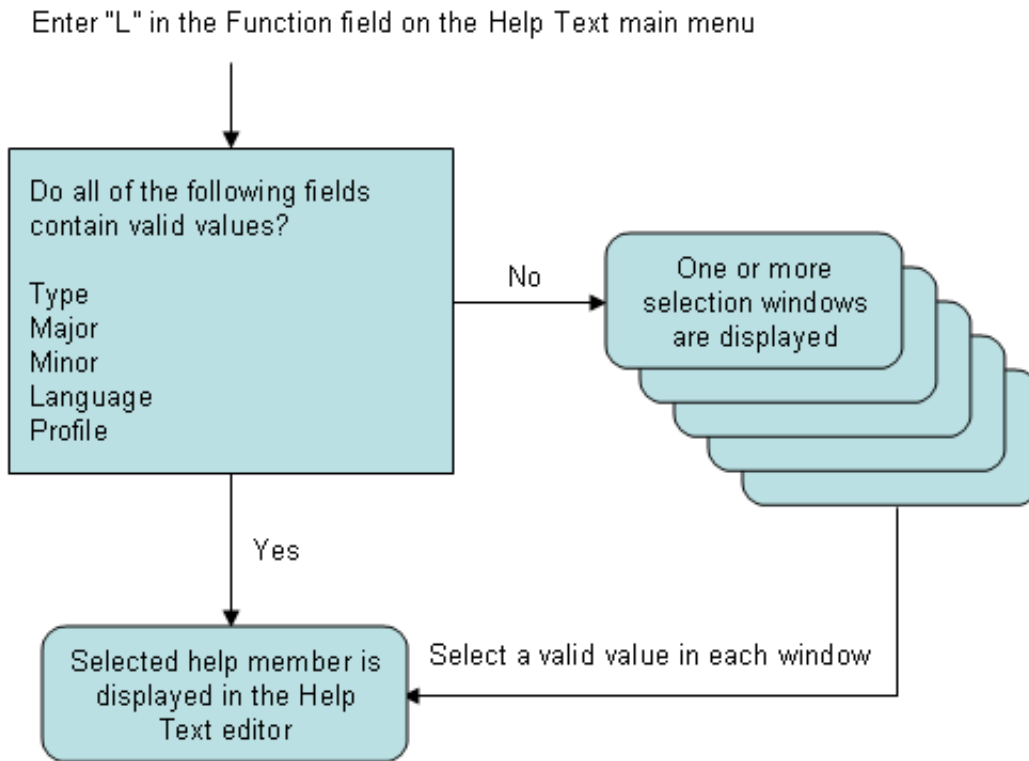
3. Select the appropriate component in each selection window.

After selecting the components, the help member is displayed in the editor.

**Note:**

If you enter a non-valid value in any field, the selection values in the corresponding window are displayed in alphanumeric order beginning with the next valid value. For example, if you enter "N" and it is not a valid value, the list will begin with values that begin with the letter N.

The following diagram illustrates the process the List function follows:



The selection windows are:

- Select Type Component Window
- Select Major Component Window
- Select Minor Component Window
- Select Language Component Window
- Select Profile Window

### Select Type Component Window

```

CSHLTYPE          Natural Construct          CSHTYPE0
Aug 17             Select Type Component      1 of 1

          D File - DB field
          F Program - field
          P System - program
          O Other

Type ... _
Enter-PF1---PF2---PF3---PF4---PF5---PF6---PF7---PF8---PF9---
      help  retrn quit
Enter selection
  
```

This window displays the valid Type components. These are:



- D

Help for a database field (Minor component) within a file (Major component)

- F

Help for a field within a program

- P

Help for a program or map

- O

Miscellaneous help (the Major and Minor components may have any value; for example, any procedure or glossary type help text)

▶ **To select a Type component:**

1. Type the appropriate code in the Type field.

**Tip:**

You can also move the cursor to the line containing the Type component.

2. Press Enter.

## Select Major Component Window

```

CSHLMAJR                      Natural Construct                      CSHLMJR0
Aug 17                          Select Major Component                1 of 1

Type P
-----
CN
CP
CS
CT
CU
CUFMPDA
CUMNPDA
CUOMPDA
CUSCPDA

                                End of Data

Major .....
Enter-PF1---PF2---PF3---PF4---PF5---PF6---PF7---PF8---PF9---PF10--PF11--PF
      help retrn                      bkwrtd frwrtd
Position cursor or enter screen value to select

```

This window displays the Major components associated with the selected Type component. Press PF8 (frwrtd) to scroll forward through the list; press PF7 (bkwrtd) to scroll backward through the list.

▶ **To select a Major component:**

1. Type the appropriate value in the Major field.

**Tip:**

You can also move the cursor to the line containing the Major component.

2. Press Enter.

**Select Minor Component Window**

```

CSHLMINR                      Natural Construct                      CSHLMIRO
Aug 17                          Select Minor Component                      1 of 1

Type P / Major CU
-----
CU--DWM0                        Window Help
CU--DYM0                        Dynamic Attributes Help
CUBAMA0                         Batch Help
CUBAMB0                         Batch Help
CUBAMC0                         Batch Help
CUBAMD10                       Batch Help
CUBAMD20                       Batch Help
CUBAMD30                       Batch Help
CUBAME0                         Batch Help
CUBOKMA0                       BROWSE-OBJECT-KEY-PDA Help
CUBOMA0                        BROWSE-OBJECT-SUBP Help
Minor .....
Enter-PF1---PF2---PF3---PF4---PF5---PF6---PF7---PF8---PF9---PF10--PF11--PF
      help  retrn                                bkwrđ frwrđ
Position cursor or enter screen value to select

```

This window displays the Minor components associated with the selected Type/Major component. Press PF8 (frwrđ) to scroll forward through the list; press PF7 (bkwrđ) to scroll backward through the list.

**▶ To select a Minor component:**

1. Type the appropriate value in the Minor field.

**Tip:**

You can also move the cursor to the line containing the Minor component.

2. Press Enter.

**Select Language Component Window**

```

CSHLLANG                Natural Construct                CSHLLAN0
Aug 17                  Select Language Component        1 of 1

Type P / Major CU / Minor CUBOMA0
-----
 1 English                Standard Parameters
                        End of Data

Language ..... _
Enter-PF1---PF2---PF3---PF4---PF5---PF6---PF7---PF8---PF9---PF10--PF11--PF
      help retrn                bkwrđ frwrđ
Position cursor or enter screen value to select

```

This window displays the selected help member in all defined languages (in this example, only English is defined). Press PF8 (frwrđ) to scroll forward through the list; press PF7 (bkwrđ) to scroll backward through the list.

 **To select a Language component:**

1. Type the appropriate code in the Language field.

**Tip:**

You can also move the cursor to the line containing the Language component.

2. Press Enter.

## Select Profile Window

```

CSHPLIST                Natural Construct                CSHPLST0
Aug 17                  Select Profile                  1 of 1

Profile   Description
-----
ACTION    ** Automatically created during batch load **
CSUSEREX  Natural Construct user exit sample profile
SYSCSTDE  ** Automatically created during batch load **
NCSTHELP  Default CST451 help text profile
PREDICT   Default Predict extended description profile
Profile name ..... _
Enter-PF1---PF2---PF3---PF4---PF5---PF6---PF7---PF8---PF9---PF10--PF11--PF
      help retrn                bkwrđ frwrđ
Position cursor or enter screen value to select

```

This window displays the valid help profiles. Press PF8 (frwrđ) to scroll forward through the list; press PF7 (bkwrđ) to scroll backward through the list.

 **To select a profile:**

1. Type the name of the help profile in the Profile name field.

**Tip:**


You can also move the cursor to the line containing the help profile name.

2. Press Enter.

The selected help member is read into the edit buffer and the Help Text editor is displayed. For a description of this editor, see Editing Help Text.

## Purge Help Text Function

This function on the Help Text main menu purges a help member from the help text file. The help text does not have to be read into the edit buffer before the purge.

 **To purge a help member:**

1. Type "P" in the Function field.
2. Type the Type component in the Type field.
3. Type the Major component in the Major field.
4. Type the Minor component in the Minor field.
5. Type the Language component in the Language field.
6. Press Enter.

The message "Help text exists, Press enter to confirm purge" is displayed.

7. Press Enter again to confirm the purge.

**Note:**

To cancel the purge, enter a blank or another code in the Function field.

## Clear Edit Buffer Function

This function on the Help Text main menu clears the help text from the edit buffer. In addition, all values except the language code and the profile name are cleared from the Help Text main menu.

**Note:**

This function only clears the edit buffer; it does not delete the saved help text.

 **To clear the edit buffer:**

1. Type "C" in the Function field.
2. Press Enter.

If the contents of the editor were saved, the message “Edit buffer successfully cleared” is displayed.

**Note:**

If the contents of the editor were not saved, the message “Current Help Text NOT Saved. Press Enter to Confirm CLEAR” is displayed. You can then use the Save Help Text function to save the help member or press Enter to clear the buffer without saving the help member.

## Print Saved Help Text Function

This function on the Help Text main menu prints a hardcopy (paper copy) of the help text currently in the edit buffer. To use the Print Saved Help Text function, the following conditions apply:

Platform	Condition
Mainframe	Your machine must be capable of printing from Natural. For more information, see the Natural documentation.
Unix	Device LPT1 (in your NATPARM module) must be associated with a hardcopy printer. Contact your Systems personnel.

 **To print a hardcopy of the help text:**

1. Type "H" in the Function field.
2. Type the Type component in the Type field.
3. Type the Major component in the Major field.
4. Type the Minor component in the Minor field.
5. Type the Language component in the Language field.
6. Press Enter.


The headers, date, and time are printed at the top of each page. The document name (a unique identifier of the help text in the order Type/Major/Minor/Language) and page number are printed at the bottom of each page. Natural Construct fits as many help text pages on each hardcopy page as there is room.

**Note:**

Batch hardcopy of help text is also available. For information, see CSHHCOPY Hardcopy Utility.

## Maintain Default Profiles Function

This function on the Help Text main menu maintains the help profiles used for help text. These profiles determine the size and placement of the help windows that use them.

 **To view, create, or modify profiles:**

1. Type "M" in the Function field.

2. Type the name of the profile in the Profile field.
3. Press Enter.

The Maintain Default Profiles panel is displayed, showing the profile specified in the Profile field. For example:

```

CSHPFM                N a t u r a l   C o n s t r u c t                CSHPFM0
Aug 17                M a i n t a i n   D e f a u l t   P r o f i l e s        1 of 1

Action ..... _      A,B,C,D,M,N,P,R
Profile ..... SYSTEM_
Description ..... DEFAULT USER HELP PROFILE. _____
Lines per page ..... 15_
Message Library ..... CSTLDA_
Window Settings
Top left .....   Line ..... _
                   Column ..... _
                   %W setting ... _
Size .....       Width ..... 80_
                   Height ..... _
                   Frame ..... X
Dynamic Attributes
Hotlink Begin ..... <<_
Hotlink End ..... >>_
Enter-PF1---PF2---PF3---PF4---PF5---PF6---PF7---PF8---PF9---PF10--PF11--PF12---
      help retrn quit test                                     main

```

You can use this panel to perform the following tasks:

Task	Procedure
Add a help profile	Type "A" in Action and specify the values for the new profile.
Display the profile names in alphanumeric order	Type "B" in Action as follows: <ul style="list-style-type: none"> <li>● To view all profiles, type "B" in Action, blank out the value in Profile, and press Enter. The display begins with the first profile in the file.</li> <li>● To view a particular profile, type its name in Profile before performing the browse action.</li> </ul>
Clear the settings for the current profile from the panel	Type "C" in Action.
Display the settings for the profile specified in Profile	Type "D" in Action.

Task	Procedure
Modify the settings for the profile specified in Profile	<p>Type "M" in Action and modify the values for the profile.</p> <p><b>Note:</b> Changing the settings for a help profile does not affect help members previously saved using the profile. To modify the profile for previously saved members, you must select each member for editing and use the HPROF command.</p>
Display the settings for the next profile in the file	Type "N" in Action.
Purge (delete) the profile specified in Profile	<p>Type "P" in Action.</p> <p><b>Note:</b> If the profile has been saved with a help member, the profile remains as the default profile for the help member. To modify the profile, you must select the member for editing and use the HPROF command.</p>
Recall the settings for the last profile purged from the file	<p>Type "R" in Action.</p> <p><b>Note:</b> This action only works when performed immediately following the Purge action. After the profile is recalled, you can re-add it using the Add action.</p>
Change the name of the current profile	Type over the name displayed in Profile with a new name.
Change the description for the current profile	Type over the information displayed in Description with a new description.
Change the number of lines available for help text	Type over the number displayed in Lines per page. The default number of lines on each page of help text is 15. In addition to the lines that make up the body of the help member, each help window contains up to two header lines, an input line (that displays the Page fields), and two PF-key lines.
Use a different library to store message numbers and text for the current help member	<p>Type over the name displayed in Message library. Natural Construct uses this name to locate the library in which message numbers and their associated text are stored. This field is required if you are using message numbers in the Header 1, Header 2, and Hotlink fields, as well as in the body of the help member.</p> <p>This field defaults to the CSTLDA library, which contains messages for Natural Construct help members. You can create a custom message library to store help members for your generated applications.</p>

Task	Procedure
Modify the window settings	<p>Type over or specify the following window settings:</p> <ul style="list-style-type: none"> <li>● Window position <p>The window position is determined by the top left corner of the help window or by one of the %W commands. Specify one of the following options:</p> <ul style="list-style-type: none"> <li>○ Top left <p>Type the number of lines from the top of the panel to the upper edge of the window in Line and type the number of columns from the left side of the panel to the left edge of the window in Column. The top left corner of the window is defined by these values. For example, if you type "5" in Line and "10" in Column, the top left corner of the window will begin 5 lines from the top and 10 columns from the left.</p> </li> <li>○ %W setting <p>Type one of the %W commands in %W setting. For example, to use the %WB command (to size the help window to the actual size of your screen), type "B".</p> <p><b>Note:</b> If you specify a value for %W setting, you cannot specify a value for the Line and Column fields.</p> </li> </ul> </li> <li>● Window size <p>The size of the window is determined by the width and height values:</p> <ul style="list-style-type: none"> <li>○ Type the width of the help window in Width. The recommended width is 80 characters.</li> <li>○ Type the height of the help window in Height.</li> </ul> <p><b>Note:</b> If you leave this field blank, the height is determined automatically when the help text is displayed based on the number of lines specified in this field and the number of headings specified for the help member.</p> </li> <li>● Window frame <p>By default, Frame is marked and the help window will be displayed with a frame (border). To display the window without a frame, remove the "X" in Frame.</p> </li> </ul>
Test the window settings	Press PF4 (test). For information, see Test the Help Window.



Task	Procedure
Change the dynamic attribute characters	<p>Type over or specify the following dynamic attribute values. The character(s) must be unique:</p> <ul style="list-style-type: none"> <li>● Character(s) that indicates the beginning of a hotlink in Hotlink begin. The default characters are double left angle brackets (&lt;&lt;).</li> <li>● Character(s) that indicates the end of a hotlink in Hotlink end. The default characters are double right angle brackets (&gt;&gt;).</li> </ul>

4. Press PF2 to return to the Help Text editor.

### Notes:

1. You cannot change the profile for a help member once it is created. You can, however, override the profile settings for an individual help member on the Maintain Current Editor Profile panel. For information, see *Change the Current Help Profile*.
2. For information about using the Help Text editor, see *Editing Help Text*.
3. For information about using message numbers in your help text, see *Use Message Numbers*.
4. For information about the %W commands, refer to *Window Processing* in the *Natural Command Reference* documentation.
5. For information about dynamic attributes, see *Text Area*.
6. For information about hotlinks, see *Add Hotlinks*.

### Test the Help Window

You can test the help window to see how the headings will appear and to ensure the size and position of the help window are appropriate. The dimensions specified on the Maintain Default Profiles panel are used in the test.

#### Tip:

You can test a help window before performing the Add or Modify action for a profile.

#### To test the help window:

1. Press PF4 (test).

A window is displayed. For example:

```
Specify headings for test window
HD 1
HD 2
```

2. Type the heading(s) for the test window (required to calculate the height of the window).

For example, if your help member has two headings, type a value in each of the heading fields. For example:

```
Specify headings for test window
HD 1           N a t u r a l   C o n s t r u c t
HD 2 - TEST WINDOW SETTINGS -
```

3. Press Enter.

The Test Window Settings window is displayed as users will see it. For example:

```

                                N a t u r a l   C o n s t r u c t
                                - TEST WINDOW SETTINGS -

Help text line                    1
Help text line                    2
Help text line                    3
Help text line                    4
Help text line                    5
Help text line                    6
Help text line                    7
Help text line                    8
Help text line                    9
Help text line                   10
Help text line                   11
Help text line                   12
Help text line                   13
Help text line                   14
Help text line                   15
PAGE: 1 of 1
Enter-PF1---PF2---PF3---PF4---PF5---PF6---PF7---PF8---PF9---PF10--PF11--PF1
      retrn                                bkwrđ frwrđ
Help for T/Major/Minor/Language
```

4. Press Enter again to return to the Maintain Default Profiles panel.

You can either keep the window settings as they are or modify them as desired and test the window again.